



BAY STAR

2025 GAS MOTORCOACH

Make Your Wildest Adventures Come True

The perfect fit for passionate travelers and adventurous families alike, the 2025 Bay Star offers a unique gas coach experience. With thoughtful details and modern innovation throughout, the Bay Star will empower you to go farther than ever before. Plus, select floor plans offer bunk bed configurations, providing you and your travelers room to stretch out. So, make yourself at home, then chase your wildest adventures.



Ford® F-53 Chassis

7.3-liter V8 Engine | 335 HP | 468 lb./ft. torque | Granite Full-Paint Masterpiece Finish™ Exterior



30' - 38' / 9 floor plans



COCKPIT

Six-Way Power Driver's Seat

Manual Footrest on Passenger Seat

Driver Assistance Package

Forward Collision Mitigation System
Automatic High Beams
Automatic Emergency Braking
Distance Indication and Alert
Lane Departure Warning System

Axxera Dash Radio

10" Single Monitor
Android Auto™
Apple CarPlay®
SiriusXM® Ready
Rear and Side-View Cameras

Harman/JBL 180w Sound System

Two Wireless Charging Pads

USB and USB-C Connections

Drop-Down Bunk Bed Above Cockpit* (Optional)

Folding Cockpit Table (Optional)





Floor plan 3826 with Vista décor and Chiffon upper and Mesa lower cabinets

CABIN

Three Décor Options: Arlo*, Stowe, & Vista*

74" Theater Seating and 68" Trifold Sofa** (Optional)

Samsung® LED TV

Bose® Soundbar (Optional)

32" Samsung® LED TV in Front Overhead¹ (Optional)

84" Ceiling Height

*New for 2025

**Additional configurations available; see Features & Options for details

¹Not available on models with drop-down bunk



CABIN

Maple Cabinet Doors in Suede* Finish

Available in Three Solid Colors and Two Two-Tone Options*
Soft-Close Cabinet Drawers

Two 13.5K BTU Penguin™ Heat Pump Air Conditioners

Auxiliary Heater in Rear of Coach (Optional)

Vinyl Plank Flooring*

Starlink Internet System* (Optional)

WiFiRanger Everest System with Aspen Router (Optional)

**10.1" Central Monitor and
5" LCD Touch Screen* Control Panels**



Floor plan 3826 with Vista décor and Chiffon upper and Mesa lower cabinets

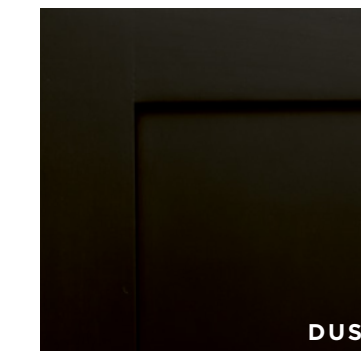
CABINET FINISHES



CHIFFON



MESA



DUSK

*New for 2025



GALLEY & DINETTE

10 Cu. Ft. Norcold® Refrigerator*

Three-Burner Cooktop

30" Stainless Steel Convection Microwave*

Air Fryer Feature

Kitchen Pantry

Polished Solid-Surface Countertop

Undermounted Stainless Steel Sink

Euro Booth Dinette with One Table Leaf*¹ (Optional)

*Additional dinette configurations available; see Features and Options for details
¹Available on select floor plans







BEDROOM

King-Size Bed* with Pillow Top Mattress

Samsung® LED TV

Lighted Wardrobe

Dresser Drawers

**Bed size varies by floor plan*



BATHROOM

Midship Half Bath*

Polished Solid-Surface Countertops

Residential-Sized Shower**

Solid-Surface Backsplash

Gas/Electric Water Heater

Electric Ignition

Truma Comfort Plus Continuous
Water Heater (Optional)

Linen and Vanity Cabinets

Stacked Two-Piece Splendide®
Washer and Dryer (Optional)



*Available on select floor plans
**Shower sizes vary by floor plan



EXTERIOR & STORAGE

**Industry-Exclusive Full-Paint
Masterpiece Finish™**

Three New Graphic Design and Color Options*

Carefree Travel'r Awning

Alumaguard
Strip Lighting

Exterior Entertainment Center (Optional)

32" Samsung® LED TV
AM/FM Radio

Lighted Basement Storage



*New for 2025

EXTERIOR

- SilverStar Ultra Headlight Bulbs
- 5.5 kW Cummins Onan® Generator
- 10w Solar Panel
(to charge chassis battery)





DESIGN OPTIONS

INTERIOR AND EXTERIOR

CARDINAL



| Charcoal Tweed Awning



ARLO INTERIOR



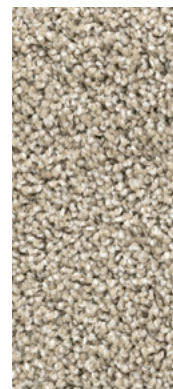
Furniture



Fabric



Fabric



Flooring



Counter Top

GRANITE



| Charcoal Tweed Awning



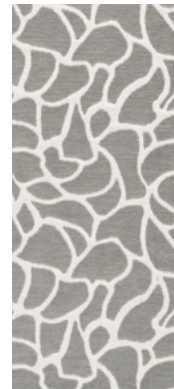
STOWE INTERIOR



Furniture



Fabric



Fabric



Flooring



Counter Top

HARVEST



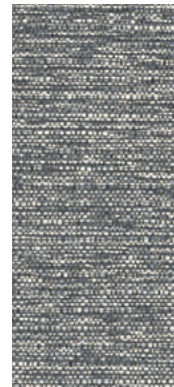
| Charcoal Tweed Awning



VISTA INTERIOR



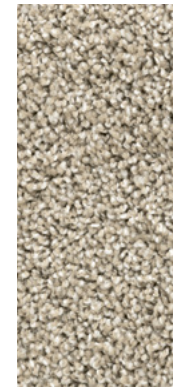
Furniture



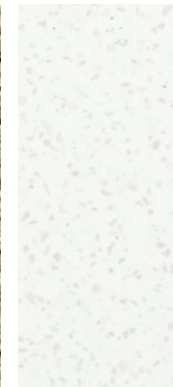
Fabric



Fabric



Flooring



Counter Top

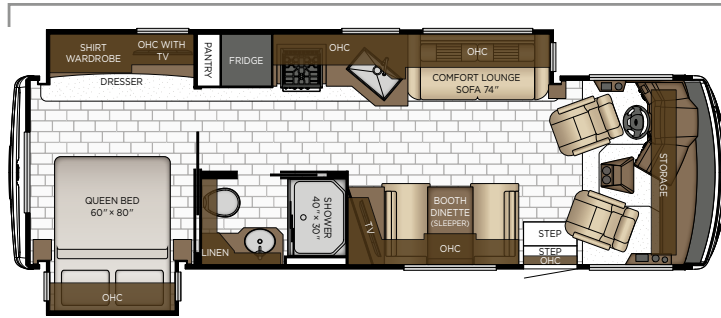
**Exterior colors and interior décor options can be matched to customer preference.*



FLOOR PLANS

AND SPECIFICATIONS

Length: 30' 11"

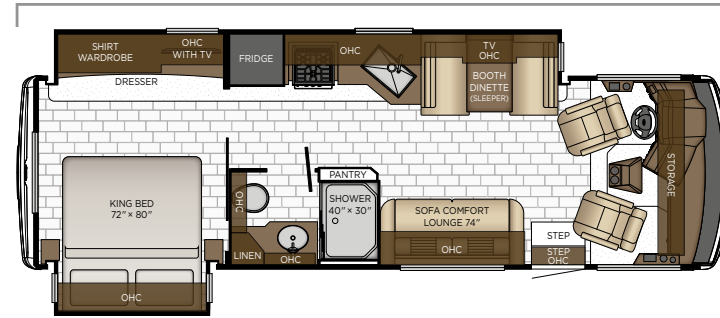


3014

Length	30' 11"
Width	101.5"
App. Overall Height	12' 10"
Interior Width	95.5"
Interior Height	84"

Grey Tank	60 gal.
Sewage Tank	40 gal.
Water Tank	75 gal.
Furnace	35000 btu

Length: 30' 11"

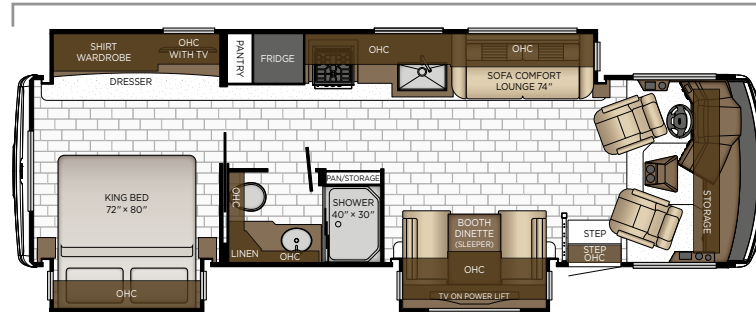


★ **3016**

Length	30' 11"
Width	101.5"
App. Overall Height	12' 10"
Interior Width	95.5"
Interior Height	84"

Grey Tank	60 gal.
Sewage Tank	40 gal.
Water Tank	75 gal.
Furnace	35000 btu

Length: 32' 11"

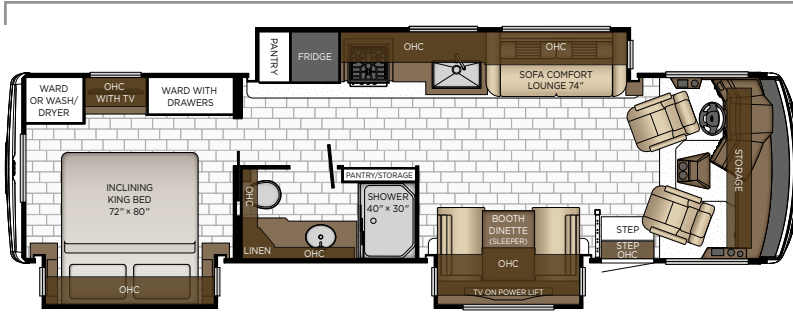


3225

Length	32' 11"
Width	101.5"
App. Overall Height	12' 10"
Interior Width	95.5"
Interior Height	84"

Grey Tank	60 gal.
Sewage Tank	40 gal.
Water Tank	75 gal.
Furnace	35,000 btu

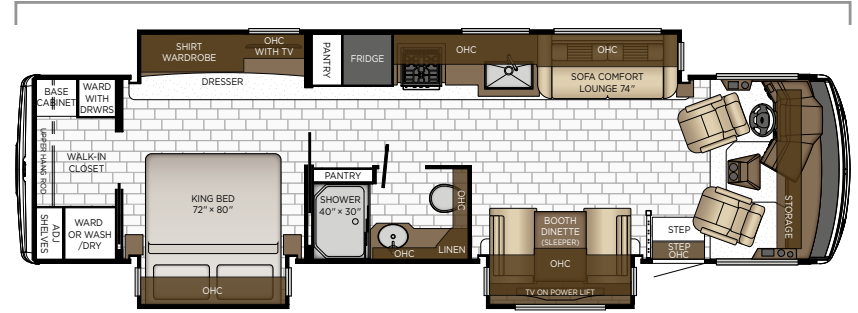
Length: 34' 11"



3423	Length	34' 11"
	Width	101.5"
	App. Overall Height	12' 10"
	Interior Width	95.5"
	Interior Height	84"

Grey Tank	60 gal.
Sewage Tank	40 gal.
Water Tank	75 gal.
Furnace	35,000 btu

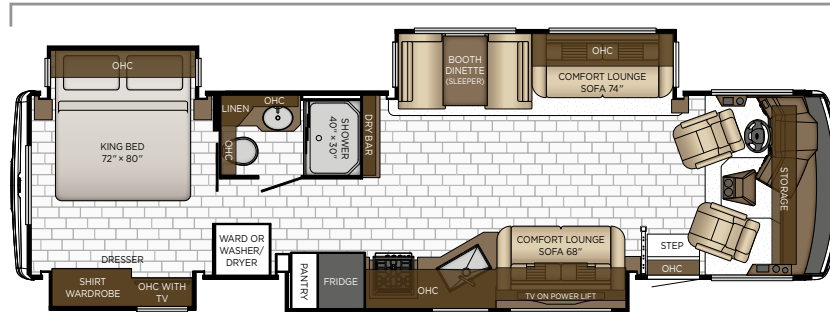
Length: 36' 11"



3618	Length	36' 11"
	Width	101.5"
	App. Overall Height	12' 10"
	Interior Width	95.5"
	Interior Height	83"

Grey Tank	60 gal.
Sewage Tank	40 gal.
Water Tank	75 gal.
Furnace	35,000 btu

Length: 36' 11"



3626	Length	36' 11"
	Width	101.5"
	App. Overall Height	12' 10"
	Interior Width	95.5"
	Interior Height	84"

Grey Tank	60 gal.
Sewage Tank	40 gal.
Water Tank	75 gal.
Furnace	35,000 btu

Length: 36' 11"

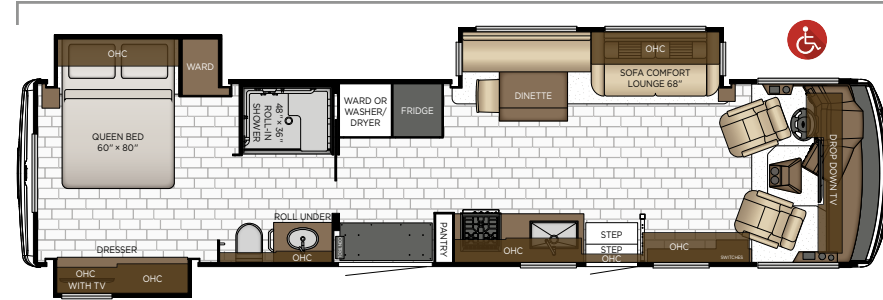


3629

Length	36' 11"
Width	101.5"
App. Overall Height	12' 10"
Interior Width	95.5"
Interior Height	84"

Grey Tank	60 gal.
Sewage Tank	92 gal.
Water Tank	75 gal.
Furnace	35,000 btu

Length: 38' 11"

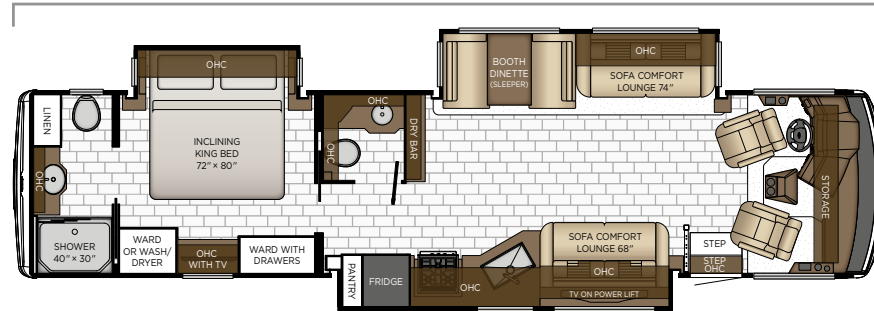


3811

Length	38' 11"
Width	101.5"
App. Overall Height	12' 10"
Interior Width	95.5"
Interior Height	84"

Grey Tank	60 gal.
Sewage Tank	40 gal.
Water Tank	75 gal.
Furnace	42,000 btu

Length: 38' 11"



★ **3826**

Length	38' 11"
Width	101.5"
App. Overall Height	12' 10"
Interior Width	95.5"
Interior Height	84"

Grey Tank	60 gal.
Sewage Tank	92 gal.
Water Tank	75 gal.
Furnace	35,000 btu



Quality You Can Feel

Like a fine home, the 2025 Bay Star is framed 16 inches on center, and is covered by a fiberglass roof.

FORD®											
FLOOR PLAN	ENGINE HP	AXLE RATIO	FUEL CAP.	WHEEL BASE	FRONT GAWR	REAR GAWR	TAG GAWR	GVWR	GCWR	APP. UVW	APP. NCC
3014	335	6.14	80	210	9000 lb.	15500 lb.	-	24000 lb.	30000 lb.	20050 lb.	3950 lb.
3016	335	6.14	80	210	9000 lb.	15500 lb.	-	24000 lb.	30000 lb.	20050 lb.	3950 lb.
3225	335	6.14	80	228	9000 lb.	15500 lb.	-	24000 lb.	30000 lb.	21450 lb.	2550 lb.
3423	335	6.14	80	234	9000 lb.	17500 lb.	-	26000 lb.	30000 lb.	21800 lb.	4200 lb.
3618	335	6.14	80	242	9000 lb.	17500 lb.	-	26000 lb.	30000 lb.	22700 lb.	3300 lb.
3626	335	6.14	80	242	9000 lb.	17500 lb.	-	26000 lb.	30000 lb.	22600 lb.	3400 lb.
3629	335	6.14	80	242	9000 lb.	17500 lb.	-	26000 lb.	30000 lb.	22700 lb.	3300 lb.
3811	335	6.14	80	254	9000 lb.	17500 lb.	-	26000 lb.	30000 lb.	22850 lb.	3150 lb.
3826	335	6.14	80	254	9000 lb.	17500 lb.	-	26000 lb.	30000 lb.	22850 lb.	3150 lb.

The content in our literature depicts and describes products that are subject to change. For the most recent images and information, please visit NewmarCorp.com.

Lengths, heights, widths, and dry weights are approximate. Weight will vary based on optional equipment added to the above base weight.

GAWR: Gross Axle Weight Rating is the maximum permissible weight for an axle.

GVWR: Gross Vehicle Weight Rating is the maximum permissible weight for a fully loaded motor coach.

GCWR: Gross Combination Weight Rating is the value specified by the manufacturer of the vehicle as the maximum allowable loaded weight of this motor coach and any towed trailer or towed vehicle.

UVW: Unloaded Vehicle Weight is the weight of this motor coach as built at the factory with full fuel, engine oil, and coolants. Does not include cargo, fresh water, propane gas, or dealer-installed accessories.

NCC: Net Carrying Capacity is the maximum weight of all occupants, including the driver, personal belongings, food, fresh water, waste water, propane gas, tools, tongue weight of towed vehicle, dealer-installed accessories, etc., that can be carried by the motor coach.

Specifications supplied by the chassis manufacturer.

Bay Star R-Values:

- Roof R-Value = 19
- Sidewall R-Value = 11
- Floor R-Value = 16
- Basement R-Value = 4



FEATURES

AND OPTIONS

EXTERIOR FEATURES

Full-Paint Masterpiece Finish™ with Clearcoat Finish

Diamond Shield Protection on Front Cap

Automatic Step for Entrance Door

Convex Exterior Mirrors with Defrost and Remote Control

Rear Hitch for Towing Car

Assist Handle at Entrance Door

Undercoating

Mud Flaps

Smart Level Hydraulic Leveling Jacks with Bluetooth Compatible Touchpad

OPTIONS

Rear Ladder*

Flagpole Bracket

CONSTRUCTION FEATURES

One-Piece Molded Fiberglass Roof

Gelcoated Fiberglass Exterior Sidewalls, Front and Rear Caps

Aluminum-Frame Sidewalls and Roof Construction, on 16" Center

5/8" Foam Insulation Laminated in Sidewalls and Ceiling

Automatic Mechanical Lock Arms on Slideout Rooms-Scissor Style

Polar Pak R19 Batten Insulation in Roof

Entrance Door Power Opening for Wheelchair Lift on 3811 Floor Plan

OPTIONS

Egress Door with Ladder System*

Power Entrance Step Well Cover on 3811 Floor Plan

WINDOWS, AWNINGS, & VENTS

One-Piece Tinted Windshield

Frameless Double Pane Tinted Safety-Glass Windows

Fan-Tastic® Vent with Rain Sensor in Kitchen and Bathroom

Skylight Above Shower

Carefree Travel'R Side Awning with Alumaguard and Strip Lighting

Rear Window in Bedroom*

Slideout Covers

OPTIONS

Screen Door Over Wheelchair Lift Area on 3811 Floor Plan

CHASSIS FEATURES

Ford® F-53 Chassis with 7.3Ltr V-8 Engine, 24,000 lb.

Ford® F-53 Chassis with 7.3Ltr V-8 Engine, 26,000 lb.

Aluminum Wheels

Cruise Control

Tilt Steering Wheel

Anti-Lock Braking System

Electronic Stability Control

Auto Emergency Break, Distance Alert, Post Impact Braking and Lane Departure Warning

Driver Alert System and Message Center

Forward Collision Mitigation System, Adaptive Cruise Control, Auto High Beams and Passive Entry

AIR CONDITIONING & HEATING

Two 13.5K BTU Penguin™ Heat Pump A/C, 5.5 Onan® Generator, 50 Amp Service and Energy Management System

Dash Heater and Air Conditioner

Propane Gas Furnace with Ducted Heat

Defrost Fans Built into Front Overhead

OPTIONS

Auxiliary Heater in Rear of Coach

ELECTRICAL FEATURES

5.5 kW Onan® Generator with Remote Switch and Automatic Changeover

Six 6-Volt House Batteries

Battery Disconnect Switch for House Battery

12 Volt Auxiliary Receptacle on Dash

Daytime Running Lights

Emergency Engine Start Switch

LED Ceiling Lights

LED Awning Strip Lighting

Lights in Exterior Storage Compartment

Lights in Wardrobe

Manually Operated Hold-to-Run Slideout Switch

Cable TV Connection

USB Outlet at Dash for Driver Use

USB Charger at Passenger Seat Area

Drain Lift Pump*

Dash Radio, Cameras and Monitors to Power-Up from both House Batteries and Ignition

Multiplex Lighting Control System

Multiplex Monitor System 10.1 in Center of Coach with Interior Lighting and HVAC Controls

- Two Wireless Phone Chargers in Cockpit
- Power Rewind Reel with 33' Cord*
- Solar Panel 10w to Charge Chassis Battery
- Inverter 2000w True Sine
- Energy Management System
- Automatic Generator Start on Low Battery or Temperature Setting

OPTIONS

- Solar Prep with Six Gauge Wire Ran from Roof to First Storage Compartment

PLUMBING & BATH FEATURES

- Demand Water System
- Sewage Holding-Tank Rinse
- Water Heater Bypass System
- Dometic® 310 China Bowl Stool
- ABS Shower Surround with Shower Door
- Exterior Shower Located on Off Door Side
- Systems Monitor Panel

OPTIONS

- Water Filter for Entire Unit

INTERIOR FEATURES

- Padded Vinyl Ceiling Panels
- Decorative Wall Art
- Vinyl Plank Floor in Kitchen, Living Area and Bathroom
- Carpeting on Slideout floors
- Interior Assist Handle at Main Entrance Door
- Non-Quilted Fitted Bedspread and Accent Pillow
- Inlaid Six Panel Design Interior Passenger Doors
- Auto Motion Manual Double Roller Shades on Windows Behind Driver and Passenger Area
- Auto Motion Power Shade at Windshield and Manual Shades at Driver and Passenger Side Windows
- Dash Panel Color Coordinated ABS
- Integrated Window Blind System on Entry Door
- Shoe Storage Located in Entrance Doorstep Compartment
- Wastebasket in Kitchen Base Under Sink

CABINETS & FURNITURE

- Dusk Maple Cabinets—Suede Finish
- 6-Way Power for Driver Seat

- Manual Footrest on Passenger Seat
- Concealed Hinges on Cabinet Doors
- Drawers Underneath Booth Dinette Seats
- Drawers with Full Extension Ball Bearing Guides
- Pull-Out Pantry Shelves*
- Polished Solid-Surface Countertop in Kitchen with Undermounted Sink and Sink Covers
- Solid-Surface Countertops in Bathroom and Bedroom
- Dinette Booth Williamsburg Sleeper
- Dinette with Power Adjustable Table, Bench Seat and Folding Chair on 3811 Floor Plan
- Williamsburg Sofa and Front Seats
- Passenger Seat Tablet Holder
- Lifts on Bed Top
- Plush Pillow Top Mattress
- Soft-Close Cabinet Drawers
- Molded Silverware Divider Tray
- Bed Base Lowered with Power Incline Head of Bed and Sleep Number® Deluxe Mattress on 3811 Floor Plan

OPTIONS

- Chiffon Maple Cabinets—Suede Finish
- Mesa Glazed Maple Cabinets—Suede Finish
- Two-Tone Chiffon Maple and Dusk Maple Cabinets—Suede Finish
- Two-Tone Chiffon Maple and Mesa Glazed Maple Cabinets—Suede Finish
- Drop Down Bunk Bed Over Driver and Passenger Seats, Extends to Windshield with Front Overhead Cabinet and Bunk Ladder
- Drop Down Bunk Bed Over Driver and Passenger Seats, Extends to Windshield with Bunk Ladder and Fireplace with TV
- Folding Cockpit Table
- Dinette Combo Desk with Buffet Table, Two Fixed and Two Folding Chairs
- Dinette Combo Desk with Free Standing Hidden Leaf Table, Two Fixed and Two Folding Chairs
- Euro Booth Dinette with One Table Leaf
- 74" Sofa Incliner Non-Sleeper
- 74" Theater Seating (Manual) with Reading Lights
- Lowered (Fixed) Bed Base with Freestyle Glide Away Adjustable Bed Mechanism with Air Mattress and Window on 3811 Floor Plan
- Power Adjustable Height Bed Base with Free Style Glide Away Bed Mechanism with Air Mattress and Window on 3811 Floor Plan
- Bed Base Full Height on 3811 Floor Plan
- 68" Visionary Sofa V2 Trifold with Memory Foam Mattress
- 74" Visionary Sofa V2 Trifold with Memory Foam Mattress

APPLIANCES & ACCESSORIES

30" Convection Microwave Stainless Steel with Three Burner Cooktop and Air Fryer Feature

Convection Microwave Below Cooktop on 3811 Floor Plan

10 Cu. Ft. Norcold® Refrigerator

6 Gallon Gas/Electric Water Heater with Electric Ignition

OPTIONS

15 Cu. Ft. Norcold® 3-Door Refrigerator with Icemaker

110 Volt Heat Pads for Holding Tanks

30" Convection Stainless Steel Microwave with Aire Fryer Feature in Kitchen Overhead with a Drawer Below Cooktop on 3811 Only

Washer and Dryer Prep

Splendide® Two-Piece Stacked Washer and Dryer

Truma Comfort Plus Continuous Hot Water Heater

11 Cu. Ft. Whirlpool® Refrigerator with Ice Maker

11 Cu. Ft. Whirlpool® Refrigerator

AUDIO, VIDEO & ACCESSORIES

Samsung® LED TV in Living and Bedroom Areas (TV Sizes Vary per Floor Plan)

Axxera Dash Radio with Android Auto™/Apple CarPlay® and SiriusXM® Ready, 10" Single Monitor

Dash Radio with Harman/JBL 180w Sound System

High-Definition Component Wiring

Rear-View Colored Monitor System with Audio

Side-View Cameras Displayed on Rear-View Monitor Screen

Satellite Dish Prep on Roof

Winegard Digital Crank Up TV Antenna

10 Bc Fire Extinguisher, Smoke Detector, Propane and Carbon Monoxide Detector

TV Jack and 110 Volt Recept in Door Side Exterior Storage Compartment

OPTIONS

43" Samsung® LED TV on Televator with Fireplace in Place of Front Overhead TV on 3811 Floor Plan Only

Bose® Soundbar Sound System

Exterior Entertainment Center in Storage Compartment with 32" Samsung® LED TV, AM/FM Radio and Speakers

32" Samsung® LED TV in Front Overhead*

WiFiRanger Denali/Spruce LTE

WiFi System Everest with Aspen Interior Router

Winegard Automatic Dome Satellite Dish-for DISH Std/HD, DIRECTV Std. and Bell Canada

Winegard Automatic Open Face Satellite Dish-for DISH HD and Bell HD TV

Winegard Automatic Open Face SWM Satellite Dish-for DIRECTV Std/HD

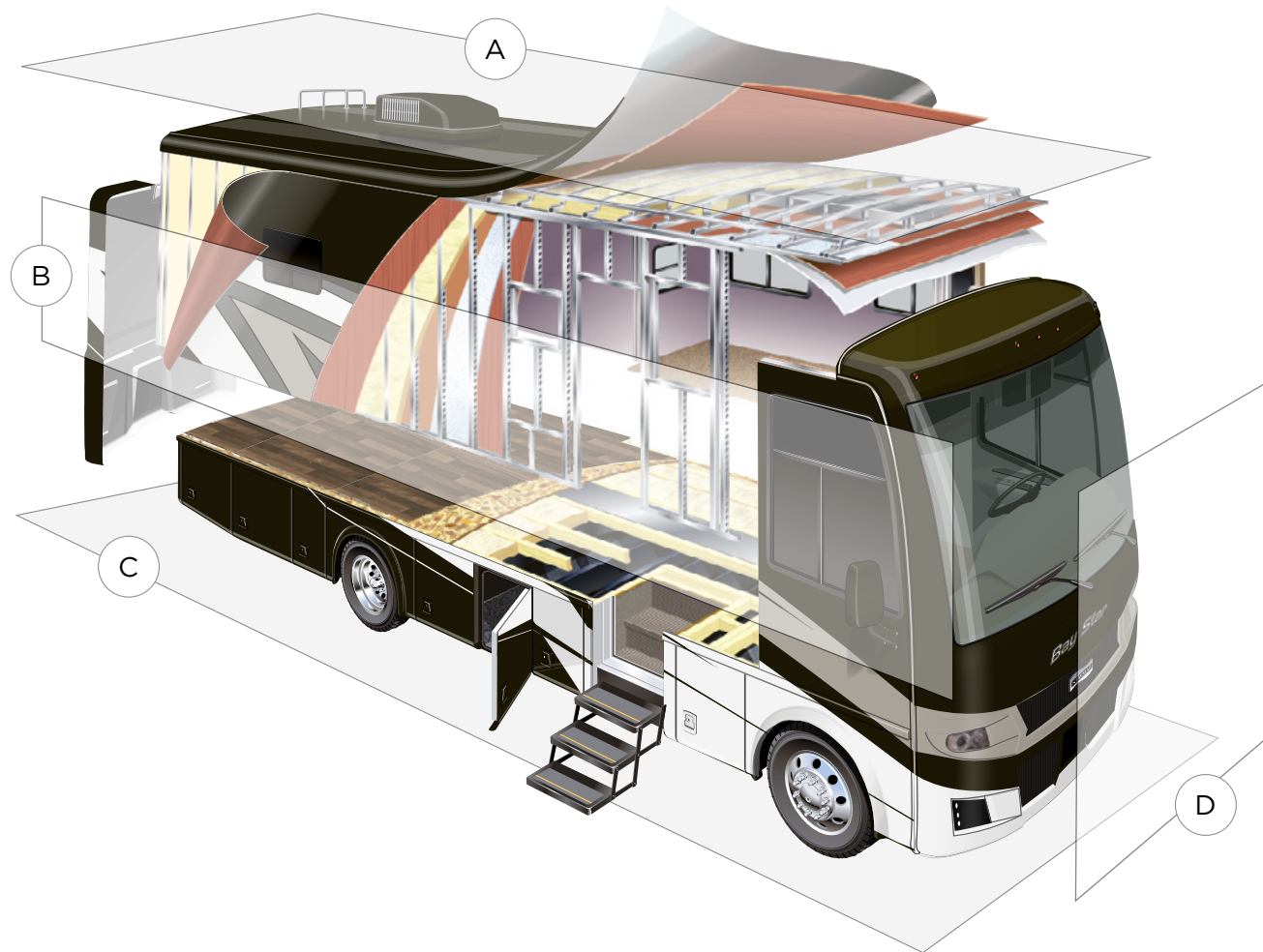
Winegard In-Motion Dome Satellite Dish-for DISH Std/HD, DIRECTV Std/HD and DIRECTV Std, and Bell Canada

Winegard Rayzar Automatic Digital TV Antenna

Starlink Internet System

*Check with dealership on floor plan availability





A. ROOF

Fiberglass Roof
 Batten Insulation
 A/C Ducting
 16" on Center Aluminum Rafter Framing
 Kraft Paper Vapor Barrier
 5/8" Bead Foam
 3/16" Panel
 Padded Vinyl Overlay

B. SIDEWALL

Interior Wall Panel
 5/8" Bead Foam
 Batten Insulation
 Composite One-Piece
 Gelcoat Exterior Sidewall
 Aluminum Framing

C. FLOOR

Carpet/Tile
 Carpet Padding
 5/8" Floor Decking
 Batten Insulation
 16" on Center Wood Framing
 Polyethylene Moisture Barrier

D. EXTERIOR

Two 13.5K BTU Penguin™ Heat Pump
 Air Conditioners
 One-Piece Bonded Windshield
 Coated Aluminum Wheels
 Frameless, Double-Pane,
 Tinted Safety Glass Windows
 Side-Hinged Baggage Doors
 Batten Insulation in Front and Rear Cap

THE NEWMAR CUSTOMER EXPERIENCE

The Newmar Difference™ goes beyond our industry-leading motor coaches to provide you with an unrivaled ownership experience.



Quality from the Start

Every Newmar is crafted one at a time by folks who have spent an average of eight years building them. Each coach we assemble must undergo more than 1,000 tests and checks before ever leaving our factory.



Carefully Selected Dealers

We view our dealership network in terms of quality, not quantity. Each of our dealers acts as a partner in our shared mission to exceed your highest of expectations, for an ownership experience that's second to none from day one.



Everything in One Place

As a Newmar owner, you'll find resources specific to your coach through Newgle, an easy-to-use knowledge base that houses everything from user guides to technical support documents.



Friends for Life

Meet fellow owners through the Newmar Kountry Klub, a top social club for RV travelers that hosts rallies and other special events throughout the U.S. and Canada.



Seamless Service

When you join the Newmar family, we pair you with a dedicated service specialist with expert knowledge of your exact coach. Our service specialists guarantee dealer warranty authorizations within four business hours and ship all in-stock parts the same day, free of charge.



Rock-Solid Protection

All models include a one-year/unlimited mileage limited warranty and a five-year, non-transferable structural warranty that covers your coach's superstructure in the event it fails to perform. Ask your Newmar dealer for more details.

OUR PARTNERS

The Newmar Difference™ begins with suppliers dedicated to providing our customers with unrivaled quality, comfort, and support.



We create chemistry

BASF

The Coatings division of BASF is a global expert in the development and production of innovative and sustainable OEM and refinish coatings. Coatings by BASF—solutions beyond your imagination.



Industrial Finishes

Industrial Finishes has supported RV manufacturers for over four decades, offering paint products that deliver uncompromising quality and provide your coach with a true Masterpiece™ finish.



Driven By You

Freightliner Custom Chassis

Freightliner Custom Chassis are renowned for their exceptional ride, excellent maneuverability, advanced technology, and nationwide 24/7 factory-direct support.



RiverPark

From Samsung® 4K TVs and Xite Infotainment systems to Bose® soundbars and JBL and Infinity premium audio systems, RiverPark helps you experience a higher level of technology in your Newmar coach.



Spartan RV Chassis

An American company with over 30 years of experience in designing and manufacturing the premier motorhome chassis, Spartan delivers superior performance, exceptional safety ratings, and industry-leading technology.



WHEN YOU KNOW THE DIFFERENCESM