

# RETREAT

DESTINATION TRAILERS



KEYSTONE  
RV COMPANY

CAMP BETTER  
KINDNESS · COMMUNITY · PLANET

# RETREAT DESTINATION TRAILERS

Minimize hassle with Retreat Destination Park Model RVs. These models offer the ideal retreat – whether that’s escaping to a warmer climate in the winter or slipping away to the lake in the summer. Designed for seasonal RV living, Keystone Retreat destination travel trailers could very well become your next cherished home away from home.

## RETREAT FEATURES

- Fully Transferable 3 Year Limited Structural Warranty
- Fully Transferable 1 Year Limited Base Warranty
- Color Coded Unified Wiring
- Tuf-Lok™ Thermoplastic A/C Duct Joiners
- Tru-Fit™ Slide Construction
- 102" Wide
- Detachable Hitch (N/A CLDL + FLFT)
- Tinted Windows
- Enclosed Underbelly
- Sliding Glass Door
- Storage Under Bed Slide
- 50 Amp Service With Detachable Cord
- Two 30 Lbs LP Tanks With Cover
- Black Tank Flush
- Raised Panel Hardwood Cabinet Doors On Upper And Lower Cabinetry
- Hidden Hinges With Magnetic Catches
- Hardwood Cabinet Framing
- Hardwood Slide Fascia
- Hardwood Tabletops
- Decorative Crown Molding
- Central Vacuum
- 8' Tall Slide Box
- 4G LTE Hotspot + Wifi Booster Prep
- Redesigned Floor Heat Ducts
- Ceiling Fan
- Motorized Roller Shades With Individual Control In Living Room (CLDL/FLSL)
- No Carpet On Main Level Or Loft Steps
- Fireplace
- 42,000 BTU Furnace
- Triple A/C Setup Where All Can Operate Simultaneously (37,000 TUS)
- 16 Gallon Gas/Electric Water Heater
- 50" 4K Vizio TV
- High Performance JBL Stereo And Speakers (CLDL/FLSL)
- Washer/Dryer Prep (N/A FLFT)
- Solid Surface Countertops
- 18.6 Cu Ft Stainless Steel Refrigerator (CLDL/FLSL)
- 15 Cu Ft Stainless Steel Refrigerator (FLFT/LOFT/MKTS)
- Stainless Steel Sink
- Sink Cover
- High Rise Faucet With Pullout Sprayer
- Free Standing Range With Four Burners (30,500 BTU Total) And 3.73 Cu Ft Oven (CLDL/FLSL)
- 30" Stainless Steel Over The Range Microwave
- Coffee Bar Inside Pantry (FLSL ONLY)
- Porcelain Toilet
- Vessel Sink
- 48x30 Shower With Full Fiberglass Surround (CLDL/FLSL)
- King Size Bed
- Decorative Bedspread And Pillow Package
- Shelves Above Bed Slide Windows For Phone Charging And CPAP (CLDL/FLSL)
- Laminated Fiberglass Exterior Walls (391 Model Number)
- Dual Pane Windows
- Four Stabilizer Jacks
- Power Awning With LED Light Strip

# RETREAT DESTINATION TRAILERS



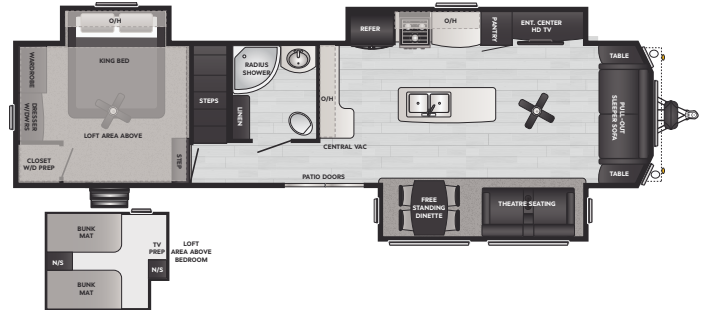
**39/391CLDL** | WEIGHT 12475 | LENGTH 42' 11"



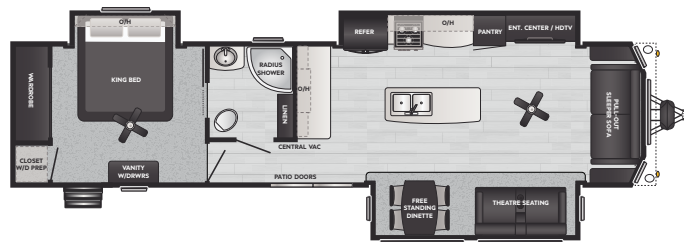
**39/391FLFT** | WEIGHT 12907 | LENGTH 40' 11"



**39/391FLSL** | WEIGHT 12105 | LENGTH 42' 11"



**39/391LOFT** | WEIGHT 12526 | LENGTH 40' 8"



**39/391MKTS** | WEIGHT 11762 | LENGTH 40' 8"

VISIT OUR WEBSITE FOR PHOTOS, 360° TOURS, AND FULL PRODUCT DETAILS



## KEYSTONE OWNER'S SUPPORT

Keystone makes operating and maintaining your new RV easy with world-class resources and support. Owners have access to a wide variety of support tools and services via the MyKeystone mobile app and the Owner's section of KeystoneRV.com.

### FIRST TIME CAMPER'S VIDEO SERIES

A comprehensive guide to RV camping basics with Keystone's Matt & Bart.

### PRO TIPS DIY OPERATION & MAINTENANCE VIDEO LIBRARY

Visit our growing collection of step-by-step video and written guides to operating, maintaining, and repairing your Keystone RV.

### DIGITAL OWNER'S MANUAL

Our new online owner's manual is fully searchable and features helpful visual and video support.

### DIY REPAIR PROGRAM\*

Which includes free parts for small repairs within your first year of ownership

### 1-YEAR LIMITED BASE WARRANTY\*

### 3-YEAR LIMITED STRUCTURAL WARRANTY\*

\*See KeystoneRV.com for full details. PRO TIP: Owners should work with their dealers or other Keystone authorized service center or mobile tech to document all warranty claims within the warranty period.

## RETREAT SPECIFICATIONS

MODEL	WEIGHT	CARRYING CAPACITY	HITCH WEIGHT	FRESH WATER**	WASTE WATER	GRAY WATER	LPG	LENGTH*	WIDTH	HEIGHT	AWNING
39CLDL	12475	3300	1775	53	39	78	60	42' 11"	8' 6"	13' 5"	26'
391CLDL	12710	3070	1780	53	39	71	60	42' 11"	8' 6"	13' 5"	26'
39FLFT	12907	1093	1405	53	39	39	60	40' 11"	8' 6"	13' 5"	18'
391FLFT	13018	982	1405	53	39	39	60	40' 11"	8' 6"	13' 5"	18'
39FLSL	12105	3510	1530	53	39	71	60	42' 11"	8' 6"	13' 5"	26'
391FLSL	12480	3135	1615	53	39	39	60	42' 11"	8' 6"	13' 5"	26'
39LOFT	12526	1474	1700	53	39	71	60	40' 8"	8' 6"	13' 5"	20'
391LOFT	12568	1432	1725	53	39	71	60	40' 8"	8' 6"	13' 5"	20'
39MKTS	11762	2153	1915	53	39	71	60	40' 8"	8' 6"	12' 7"	20'
391MKTS	11820	2105	1925	53	39	71	60	40' 8"	8' 6"	12' 7"	20'



FOLLOW US FOR THE LATEST!



DISCLAIMER: Product information is as accurate as possible as of the date of publication of this brochure. All features, floor plans, and specifications in this brochure are subject to change without notice. Please also consult Keystone's web site at [www.keystonerv.com](http://www.keystonerv.com) for more current product information and specifications. Tow Vehicle Disclaimer. CAUTION: Owners of Keystone recreational vehicles are solely responsible for the selection and proper use of tow vehicles. All customers should consult with a motor vehicle manufacturer or their dealer concerning the purchase and use of suitable tow vehicles for Keystone products. Keystone disclaims any liability or damages suffered as a result of the selection, operation, use or misuse of a tow vehicle. KEYSTONE'S LIMITED WARRANTY DOES NOT COVER DAMAGE TO THE RECREATIONAL VEHICLE OR THE TOW VEHICLE AS A RESULT OF THE SELECTION, OPERATION, USE OR MISUSE OF THE TOW VEHICLE. \*Length is defined as the distance from the centerline of hitch pin/coupler to rear bumper of trailer. \*\* Fresh water capacity includes water heater. Please review owner's manual prior to purchase for more information on service warranties, extended use, towing and maintenance. Owner's manuals can be found at [keystonerv.com](http://keystonerv.com).

PRINT 12.2023