

MERIDIAN



Why Meridian?

- Four attractive floorplans
- LED ceiling lights
- TrueAir® Maximum Comfort air conditioning
- Unmatched performance of Maxum Chassis®
- MCD solar/blackout roller shades
- Expansive exterior storage
- Ultraleather™ cab seats and lounge furniture
- Corian® countertops
- Extendable dining table with buffet

MERIDIAN



Why Meridian?

- Four attractive floorplans
- LED ceiling lights
- TrueAir® Maximum Comfort air conditioning
- Unmatched performance of Maxum Chassis®
- MCD solar/blackout roller shades
- Expansive exterior storage
- Ultraleather™ cab seats and lounge furniture
- Corian® countertops
- Extendable dining table with buffet



ON THE COVER: 42E Light Sandalwood Full-Body Paint

42E Westcott with Coffee-Glazed Vienna Maple Cabinetry

LOWERED-RAIL DESIGN FOR A HIGHER STANDARD OF LIVING

What makes the Itasca Meridian® one of the most sought-after diesel-pushers? The answer begins with the uncompromising Freightliner® Maxum Chassis® with its innovative lowered-rail design providing up to 246 cubic feet of storage. The Meridian features an impressive list of amenities that includes Corian® solid-surface countertops and backsplashes, coffee-glazed hardwood cabinetry,

Ultraleather™ furniture, and many more exciting features. Six striking, full-body paint options will make any motorhome enthusiast take notice, while the new Contour windows appeal to even the most discerning tastes. Open your eyes to a higher standard of motorhome living in the Itasca Meridian.



RECOGNIZED QUALITY The RV Dealers Association bestows its annual Quality Circle Award based on dealer ratings to manufacturers that provide exceptional products, service and support. Only one manufacturer has received this award for seventeen consecutive years: Winnebago Industries.*



ON THE COVER: 42E Light Sandalwood Full-Body Paint

42E Westcott with Coffee-Glazed Vienna Maple Cabinetry

LOWERED-RAIL DESIGN FOR A HIGHER STANDARD OF LIVING

What makes the Itasca Meridian® one of the most sought-after diesel-pushers? The answer begins with the uncompromising Freightliner® Maxum Chassis® with its innovative lowered-rail design providing up to 246 cubic feet of storage. The Meridian features an impressive list of amenities that includes Corian® solid-surface countertops and backsplashes, coffee-glazed hardwood cabinetry,

Ultraleather™ furniture, and many more exciting features. Six striking, full-body paint options will make any motorhome enthusiast take notice, while the new Contour windows appeal to even the most discerning tastes. Open your eyes to a higher standard of motorhome living in the Itasca Meridian.



RECOGNIZED QUALITY The RV Dealers Association bestows its annual Quality Circle Award based on dealer ratings to manufacturers that provide exceptional products, service and support. Only one manufacturer has received this award for seventeen consecutive years: Winnebago Industries.*

BEST IN CLASS

See how Winnebago Industries takes motorhome design and function to the next level, and why we've earned the right to be called the Most Recognized Name in Motorhomes.®



Click on this icon throughout the brochure to link to more information on the web.



The available **+Lounger** passenger seat with a built-in workstation reclines for comfort when you are parked.



Sit back and relax after a long day in the Ultraleather **Euro Recliner** with a built-in footrest. The hoop base lets you move it to your favorite spot when parked (40U, 42E).



Choose a set of two plush **Ottomans** for extra storage and seating or to rest your legs while relaxing on your sofa (NA 36M).



Day or night, the smooth-retracting **MCD Solar/Blackout Roller Shades** give you total control over light and privacy levels.



The **Rest Easy® Extendable Sectional Sofa** glides from a sofa to a lounger to a bed at the touch of a button (40U, 42E).



BEST IN CLASS

See how Winnebago Industries takes motorhome design and function to the next level, and why we've earned the right to be called the Most Recognized Name in Motorhomes.®



Click on this icon throughout the brochure to link to more information on the web.



The available **+Lounger** passenger seat with a built-in workstation reclines for comfort when you are parked.



Sit back and relax after a long day in the Ultraleather **Euro Recliner** with a built-in footrest. The hoop base lets you move it to your favorite spot when parked (40U, 42E).



Choose a set of two plush **Ottomans** for extra storage and seating or to rest your legs while relaxing on your sofa (NA 36M).



Day or night, the smooth-retracting **MCD Solar/Blackout Roller Shades** give you total control over light and privacy levels.



The **Rest Easy® Extendable Sectional Sofa** glides from a sofa to a lounger to a bed at the touch of a button (40U, 42E).





42E Westcott with Coffee-Glazed Vienna Maple Cabinetry

Stunning, luxurious amenities and thoughtful seating arrangements seamlessly come together in the Meridian's lounge. A generous living area, complete with Ultraleather furniture and a state-of-the-art Blu-Ray™ Home Theater System, welcomes you as you enter the coach. From the LED ceiling lights and tray ceiling with crown molding, to the reliable TrueAir® maximum comfort air conditioning system and superior designed Contour windows, the lounge is undeniably sophisticated and equally comfortable.



42E Mid-Coach HDTV



42E Euro Recliner with Pull-Out/Flip-Out Table



42E Westcott with Coffee-Glazed Vienna Maple Cabinetry

Stunning, luxurious amenities and thoughtful seating arrangements seamlessly come together in the Meridian's lounge. A generous living area, complete with Ultraleather furniture and a state-of-the-art Blu-Ray™ Home Theater System, welcomes you as you enter the coach. From the LED ceiling lights and tray ceiling with crown molding, to the reliable TrueAir® maximum comfort air conditioning system and superior designed Contour windows, the lounge is undeniably sophisticated and equally comfortable.



42E Mid-Coach HDTV



42E Euro Recliner with Pull-Out/Flip-Out Table



42E Galley



French Door Residential Refrigerator



42E Pull-Out Pantry

From quiet dinners to lively entertaining, the Meridian's polished galley is equipped to handle any event. Featuring a microwave/convection oven, an available stainless steel French door residential refrigerator with an ice and water dispenser, and extensive storage, this complete galley also has the preparation space you need. One of three beautiful cabinet finishes, including Coffee-Glazed Honey Cherry, Coffee-Glazed Forest Cherry, or Coffee-Glazed Vienna Maple, will make matching your galley to your style easy. With easy flow and functional space, your refined galley will serve as the heart of your Meridian.



Full-Extension Drawer Slides



Pull-Out Island (NA 34B)



42E Galley



French Door Residential Refrigerator



42E Pull-Out Pantry

From quiet dinners to lively entertaining, the Meridian's polished galley is equipped to handle any event. Featuring a microwave/convection oven, an available stainless steel French door residential refrigerator with an ice and water dispenser, and extensive storage, this complete galley also has the preparation space you need. One of three beautiful cabinet finishes, including Coffee-Glazed Honey Cherry, Coffee-Glazed Forest Cherry, or Coffee-Glazed Vienna Maple, will make matching your galley to your style easy. With easy flow and functional space, your refined galley will serve as the heart of your Meridian.



Full-Extension Drawer Slides



Pull-Out Island (NA 34B)

The dining table with a buffet and the elegant, extendable dining table set the stage for enjoyable evenings spent in the luxury of your motorhome. The tabletop easily expands to allow for additional guest seating. Additional dining options include a buffet in the 34B that ingeniously houses a retractable HDTV or the innovative Glide and Dine™ dining table that easily extends and glides to the left or right for maximum dining comfort and usability.



42E Extendable Dining Table and Chairs

42E Dining Table and Chairs Extended for Four

The dining table with a buffet and the elegant, extendable dining table set the stage for enjoyable evenings spent in the luxury of your motorhome. The tabletop easily expands to allow for additional guest seating. Additional dining options include a buffet in the 34B that ingeniously houses a retractable HDTV or the innovative Glide and Dine™ dining table that easily extends and glides to the left or right for maximum dining comfort and usability.



42E Extendable Dining Table and Chairs

42E Dining Table and Chairs Extended for Four



42E Powered Bed

A perfect night's sleep is one adjustment away with the Ideal Rest® Natural Reserve digital comfort control mattress. The natural cotton and bamboo fibers, along with the duo-firmness Memory-Cell® insert, add to the comfort. The powered bed comes standard on the 42E and adjusts to your preferred position, so whether you're reading a book or watching the HDTV, you can be comfortable. A convenient on-suite bathroom with the spacious BIG Shower is included in the 42E floorplan. Each floorplan offers abundant bedroom storage, with space for plenty of clothes and other necessities.



42E Powered Bed Up



42E Bedroom HDTV



42E Bedroom Wardrobe



42E Master Bath



42E Half Bath



42E Powered Bed

A perfect night's sleep is one adjustment away with the Ideal Rest® Natural Reserve digital comfort control mattress. The natural cotton and bamboo fibers, along with the duo-firmness Memory-Cell® insert, add to the comfort. The powered bed comes standard on the 42E and adjusts to your preferred position, so whether you're reading a book or watching the HDTV, you can be comfortable. A convenient on-suite bathroom with the spacious BIG Shower is included in the 42E floorplan. Each floorplan offers abundant bedroom storage, with space for plenty of clothes and other necessities.



42E Powered Bed Up



42E Bedroom HDTV



42E Bedroom Wardrobe



42E Master Bath



42E Half Bath



Dash with Powered MCD Solar/Blackout Roller Shades

Recognized for its signature smooth ride, the cab delivers the superior comforts one expects from a luxury diesel-pusher with the unmatched performance of a Maxum Chassis.[®] The soft, Ultraleather[®] cab seats can make even the longest rides comfortable. A new Infotainment Center with a Rand McNally RV GPS has it all: touch screen color monitor with split screen function, safe and easy routing, amenities and tools, trips and content, turn-by-turn voice guidance, CD/DVD player, SiriusXM[™] (subscription not included), compass, outside temperature, iPod[®]/iPhone[®] integration, Bluetooth[™], and so much more.



Available +Lounger



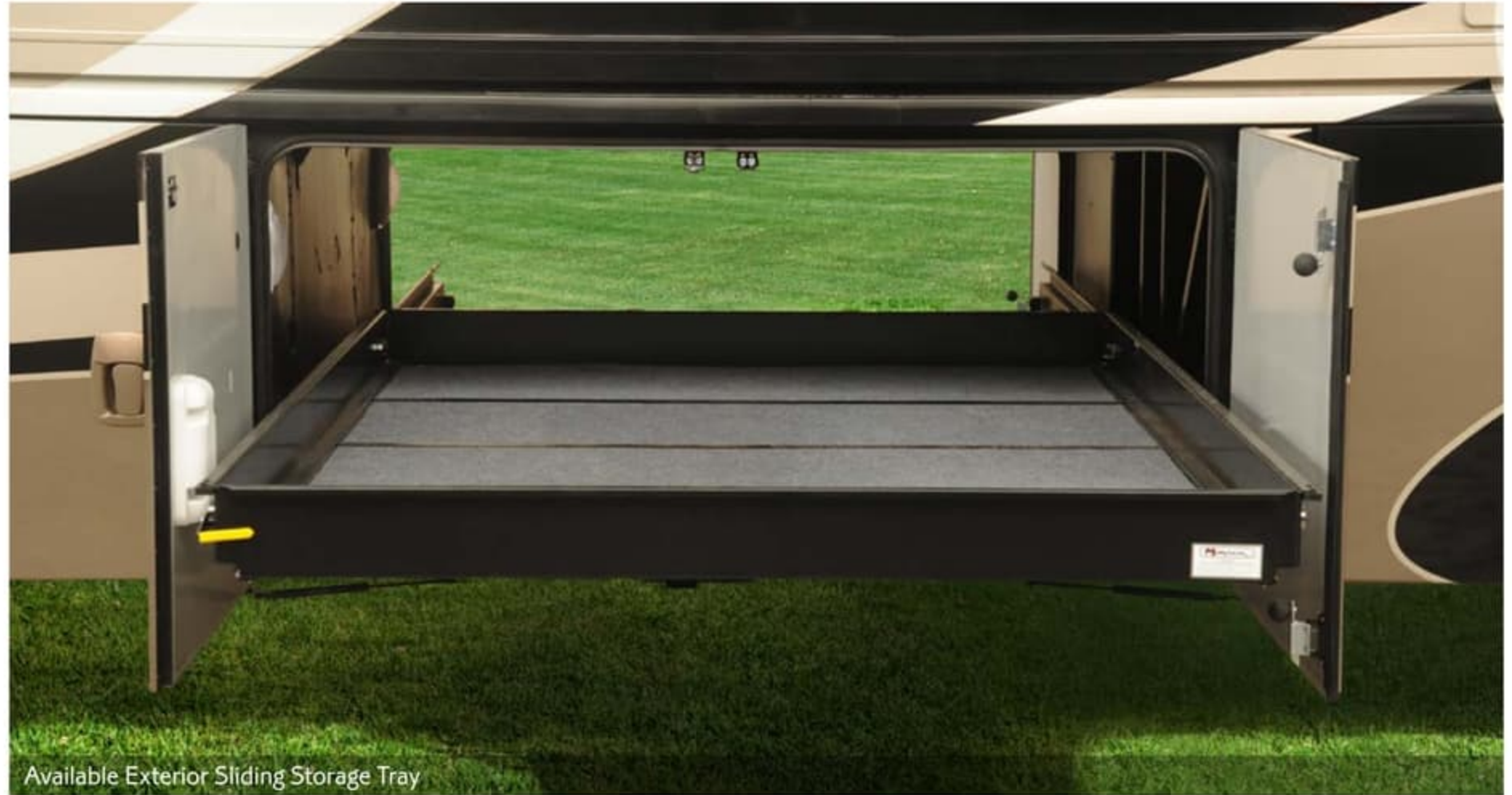
Dash with Powered MCD Solar/Blackout Roller Shades

Recognized for its signature smooth ride, the cab delivers the superior comforts one expects from a luxury diesel-pusher with the unmatched performance of a Maxum Chassis.® The soft, Ultraleather cab seats can make even the longest rides comfortable. A new Infotainment Center with a Rand McNally RV GPS has it all: touch screen color monitor with split screen function, safe and easy routing, amenities and tools, trips and content, turn-by-turn voice guidance, CD/DVD player, SiriusXM™ (subscription not included), compass, outside temperature, iPod®/iPhone® integration, Bluetooth™, and so much more.



Available +Lounge

With plenty of exterior storage space, there will be no need to compromise on what to bring on your travels. Available sliding storage trays allow you to easily access your gear from either side of the coach. From the color-coded service center to the powered patio awning, the Meridian was designed with functionality in mind. For those warm summer evenings, a 32" HDTV comes in the available exterior entertainment center.



Available Exterior Sliding Storage Tray

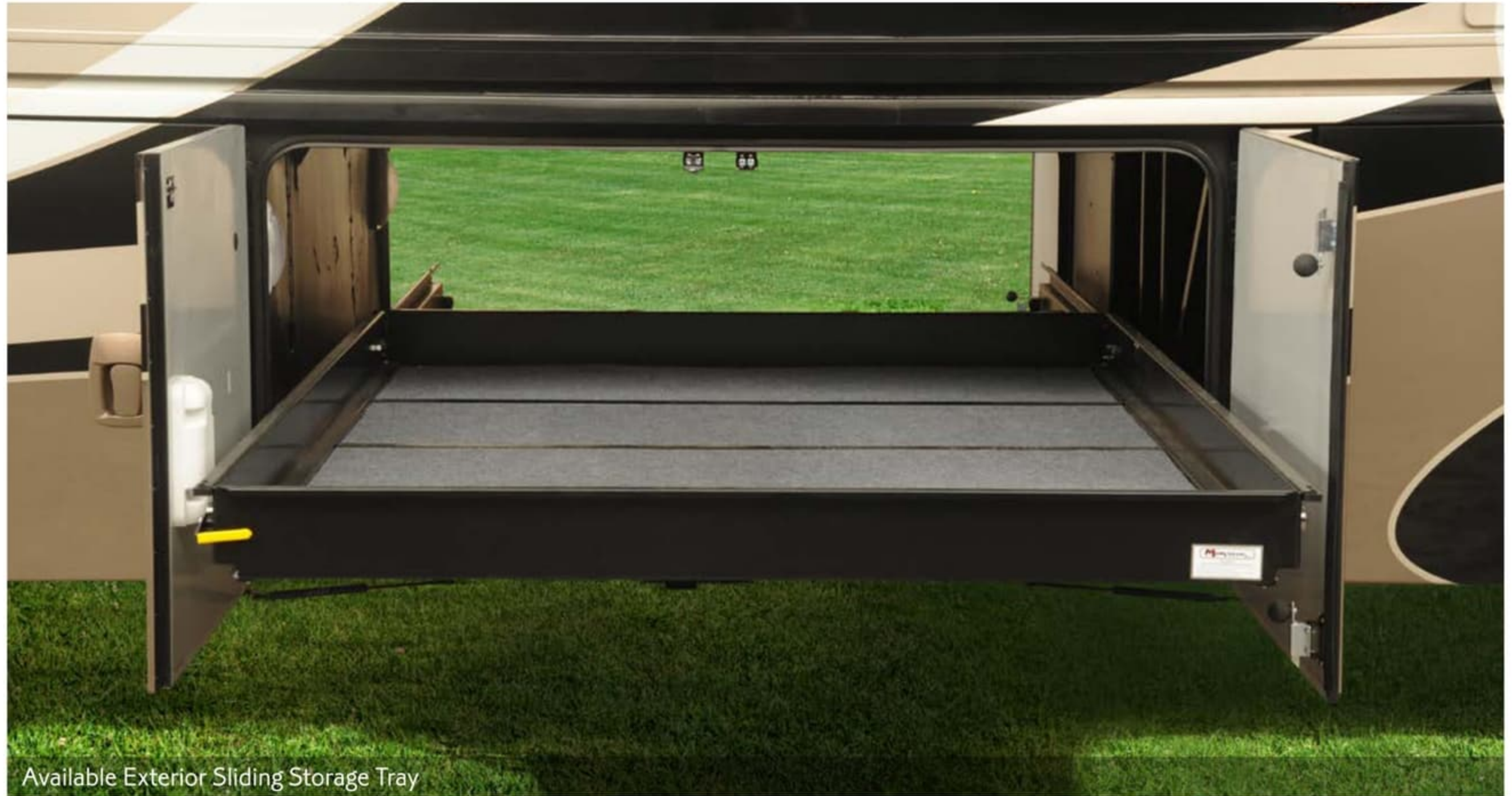


Available Exterior Entertainment Center with 32" HDTV



Powered Patio Awning with Wind Sensor and LED Lighting

With plenty of exterior storage space, there will be no need to compromise on what to bring on your travels. Available sliding storage trays allow you to easily access your gear from either side of the coach. From the color-coded service center to the powered patio awning, the Meridian was designed with functionality in mind. For those warm summer evenings, a 32" HDTV comes in the available exterior entertainment center.



Available Exterior Sliding Storage Tray



Available Exterior Entertainment Center with 32" HDTV



Powered Patio Awning with Wind Sensor and LED Lighting

Fiberglass Roof The crowned, one-piece fiberglass roof is backed by a 10-year limited parts-and-labor roof skin warranty.

Thermo-Panel® Sidewalls By layering fiberglass and high-density block foam insulation with welded aluminum support structures, we create some of the industry's strongest, most durable and lightweight sidewalls.

E-Coating An electrodeposition coating helps protect critical steel components.

Embedded Steel Metal substructures embedded into the sidewall provide solid attachment points to keep cabinets and appliances mounted securely in place.

Solid Framework Aluminum extruded in our own facility to our exacting standards creates an extremely strong and solid structural framework.

Laser-Cut Tubing Precision laser cutters create precise joints in structural steel that are stronger and require less welding.



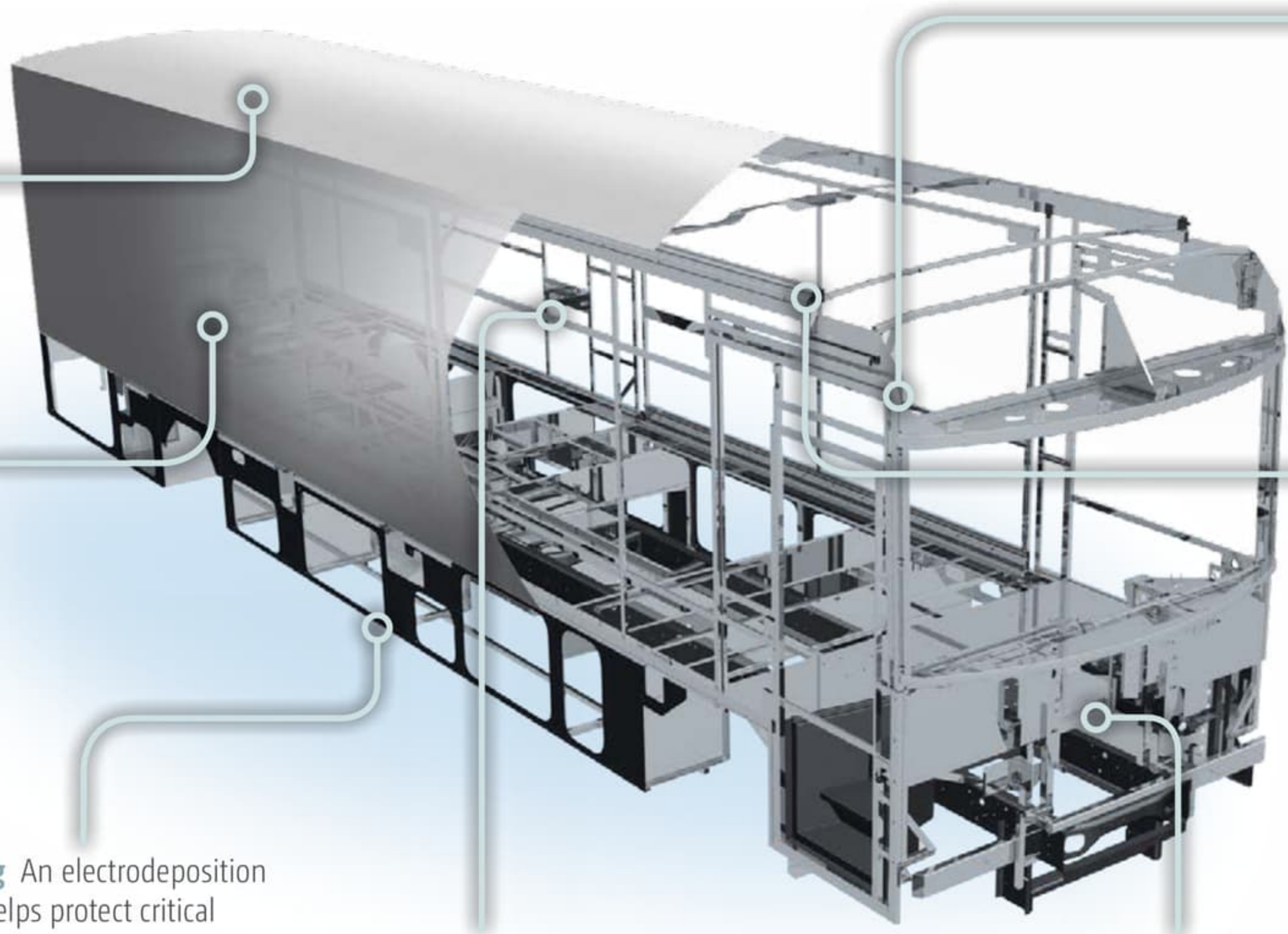
Interlocking Joints Specially engineered interlocking joints connect the floor, sidewalls and roof where competitors often rely on simple screws to bear the weight.



SUPER STRUCTURE

BUILT TO LAST

Every coach—from our smallest Class C to our largest diesel-pusher model—is built to Winnebago Industries'® legendary SuperStructure® construction standards. It's a process developed and refined over more than 50 years of building some of the strongest, most durable coaches in the industry.



Fiberglass Roof The crowned, one-piece fiberglass roof is backed by a 10-year limited parts-and-labor roof skin warranty.

Thermo-Panel® Sidewalls By layering fiberglass and high-density block foam insulation with welded aluminum support structures, we create some of the industry's strongest, most durable and lightweight sidewalls.

E-Coating An electrodeposition coating helps protect critical steel components.

Embedded Steel Metal substructures embedded into the sidewall provide solid attachment points to keep cabinets and appliances mounted securely in place.

Solid Framework Aluminum extruded in our own facility to our exacting standards creates an extremely strong and solid structural framework.

Laser-Cut Tubing Precision laser cutters create precise joints in structural steel that are stronger and require less welding.



Interlocking Joints Specially engineered interlocking joints connect the floor, sidewalls and roof where competitors often rely on simple screws to bear the weight.



SUPER STRUCTURE

BUILT TO LAST

Every coach—from our smallest Class C to our largest diesel-pusher model—is built to Winnebago Industries'® legendary SuperStructure® construction standards. It's a process developed and refined over more than 50 years of building some of the strongest, most durable coaches in the industry.

3-point engine mounting reduces engine vibration.

Engine brake uses the engine to slow the coach, promoting longer brake life.

Allison® 3000 MH 6-speed automatic transmission includes a touchpad control for ease of use (Allison 2500 MH on 34B).

Rear axle incorporates proprietary gear machining for a smoother, quieter ride.

NeWay® rear air suspension provides superior ride and handling.

The lowered-rail design moves intrusive rails from storage areas, creating up to 246 cubic feet of storage.

Taller, 23.25" pass-through storage height accommodates bulky items compared to 19.5" similar raised-rail and 17" on a typical raised-rail.

Extra space in critical areas allows for more pass-through storage.

55° wheel cut provides a tighter turning radius and better maneuvering.

Color-coded air lines make service easy.

10,000-pound trailer hitch® (34B, 36M, 40U); 15,000-pound trailer hitch® (42E)

"Clean Air Diesel" Cummins® engine delivers hill-climbing power when you need it most:

- Cummins ISB 6.7L 340-hp (34B)
- Cummins ISB XT 6.7L 360-hp (36M)
- Cummins ISL 8.9L 380-hp (40U)
- Cummins ISL 8.9L 400-hp (42E)

Low frame rails create a lower center of gravity improving stability.

Winnebago Industries' SuperStructure integrated with the lowered-rail design creates a chassis that is seven times stronger than typical raised-rail chassis designs.

Dual-fill fuel tank.

MAXUM CHASSIS

A True Work of Art

You may not be able to see the Freightliner® Maxum Chassis® as you're driving through the Rockies, but you'll know it's there. Its powerful Cummins® turbo-charged diesel engine and Allison® transmission go to work so you don't have to sweat the peaks and valleys ahead.

Through a strong partnership with Freightliner, the undisputed leader in diesel motorhome

chassis, we set a new standard for handling, ride and performance in diesel chassis design.

But performance doesn't mean sacrificing storage. The innovative lowered-rail design of the Maxum Chassis opens up a cavernous basement storage compartment, offering up to 246 cubic feet of storage.

4-wheel ABS anti-lock air brakes provide fast stopping power.

Michelin® tires and polished aluminum wheels look sharp.

MAXUM CHASSIS

3-point engine mounting reduces engine vibration.

Engine brake uses the engine to slow the coach, promoting longer brake life.

Allison® 3000 MH 6-speed automatic transmission includes a touchpad control for ease of use (Allison 2500 MH on 34B).

Rear axle incorporates proprietary gear machining for a smoother, quieter ride.

NeWay® rear air suspension provides superior ride and handling.

The lowered-rail design moves intrusive rails from storage areas, creating up to 246 cubic feet of storage.

Taller, 23.25" pass-through storage height accommodates bulky items compared to 19.5" similar raised-rail and 17" on a typical raised-rail.

Extra space in critical areas allows for more pass-through storage.

10,000-pound trailer hitch® (34B, 36M, 40U); 15,000-pound trailer hitch® (42E)

"Clean Air Diesel" Cummins® engine delivers hill-climbing power when you need it most:

- Cummins ISB 6.7L 340-hp (34B)
- Cummins ISB XT 6.7L 360-hp (36M)
- Cummins ISL 8.9L 380-hp (40U)
- Cummins ISL 8.9L 400-hp (42E)

Low frame rails create a lower center of gravity improving stability.

Winnebago Industries' SuperStructure integrated with the lowered-rail design creates a chassis that is seven times stronger than typical raised-rail chassis designs.

55° wheel cut provides a tighter turning radius and better maneuvering.

Color-coded air lines make service easy.

Dual-fill fuel tank.

A True Work of Art

You may not be able to see the Freightliner® Maxum Chassis® as you're driving through the Rockies, but you'll know it's there. Its powerful Cummins® turbo-charged diesel engine and Allison® transmission go to work so you don't have to sweat the peaks and valleys ahead.

Through a strong partnership with Freightliner, the undisputed leader in diesel motorhome

chassis, we set a new standard for handling, ride and performance in diesel chassis design.

But performance doesn't mean sacrificing storage. The innovative lowered-rail design of the Maxum Chassis opens up a cavernous basement storage compartment, offering up to 246 cubic feet of storage.

4-wheel ABS anti-lock air brakes provide fast stopping power.

Michelin® tires and polished aluminum wheels look sharp.

TESTING Before rolling out of our factories, every coach undergoes an extensive 113-point inspection. Each coach also passes a high-pressure water test that simulates rain at a rate of 50-inches per hour to check for leaks. During the design process, our computer simulations, physical testing center, and rigorous test track ensure each model is built to last.



DETAILS At Winnebago Industries, we treat the features you can't see with the same care as the ones you can. Look in the access panels of some of our competitors' coaches and you'll see loose insulation and wires haphazardly strewn about. Winnebago Industries maintains a clean fit and finish throughout so your coach will last for the long haul.



BUILT IN-HOUSE We extrude our own aluminum. We rotocast our own plastic components. In fact, we manufacture most of our own parts so they are designed to fit the space, rather than fitting the space to an awkward off-the-shelf component size.



**SUPER
STRUCTURE**
BUILT TO LAST

Visit BetterBuiltRVs.com to gain real insight into what goes into a Winnebago Industries motorhome.

TAKE A TOUR We're proud of our processes, state-of-the-art facilities, and the people who make Winnebago Industries number one. We invite you to visit our complex in Forest City, Iowa, for a first-hand look at the dedication and technology behind every motorhome we build.



TESTING Before rolling out of our factories, every coach undergoes an extensive 113-point inspection. Each coach also passes a high-pressure water test that simulates rain at a rate of 50-inches per hour to check for leaks. During the design process, our computer simulations, physical testing center, and rigorous test track ensure each model is built to last.



DETAILS At Winnebago Industries, we treat the features you can't see with the same care as the ones you can. Look in the access panels of some of our competitors' coaches and you'll see loose insulation and wires haphazardly strewn about. Winnebago Industries maintains a clean fit and finish throughout so your coach will last for the long haul.



BUILT IN-HOUSE We extrude our own aluminum. We rotocast our own plastic components. In fact, we manufacture most of our own parts so they are designed to fit the space, rather than fitting the space to an awkward off-the-shelf component size.



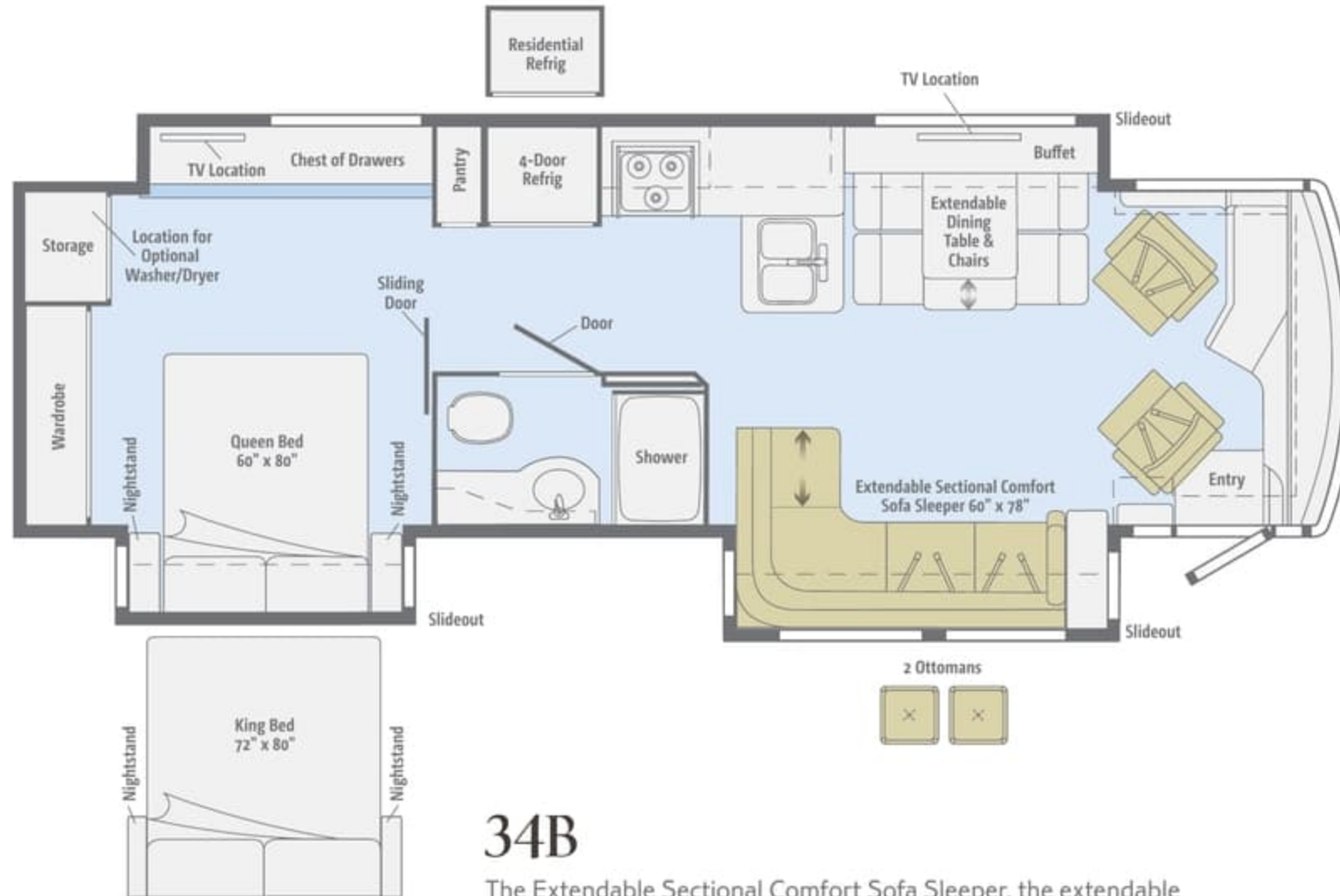
**SUPER
STRUCTURE**
BUILT TO LAST

Visit BetterBuiltRVs.com to gain real insight into what goes into a Winnebago Industries motorhome.

TAKE A TOUR We're proud of our processes, state-of-the-art facilities, and the people who make Winnebago Industries number one. We invite you to visit our complex in Forest City, Iowa, for a first-hand look at the dedication and technology behind every motorhome we build.



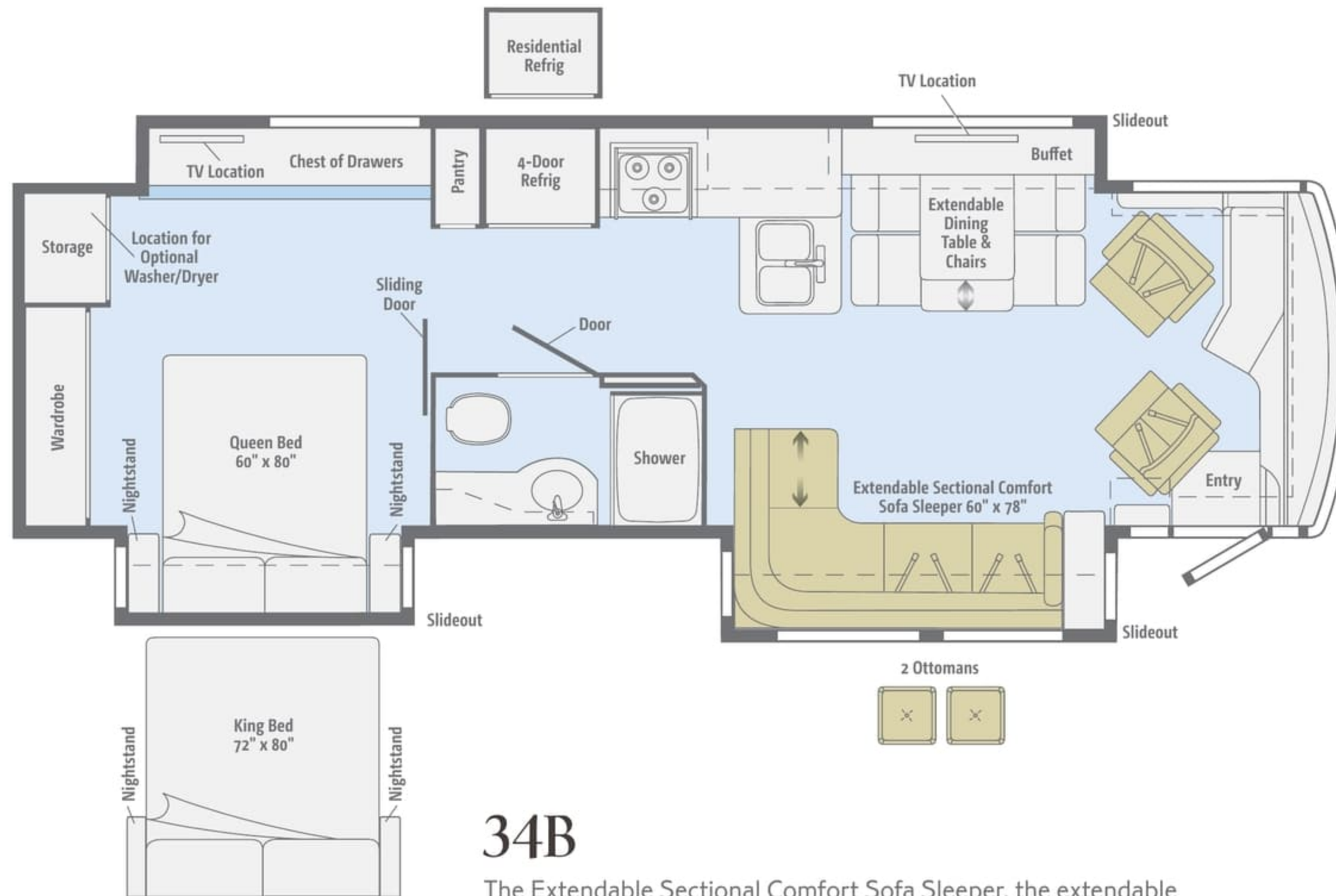
Dimensions shown are for sleeping space only and may vary due to styling differences. Dashed lines denote overhead storage areas. Floorplans and specifications are also available online at Goltasca.com.



34B

The Extendable Sectional Comfort Sofa Sleeper, the extendable dining table with buffet, and the full-wall slideout create plenty of spacious living areas in this floorplan.

Dimensions shown are for sleeping space only and may vary due to styling differences. Dashed lines denote overhead storage areas. Floorplans and specifications are also available online at Goltasca.com.



34B

The Extendable Sectional Comfort Sofa Sleeper, the extendable dining table with buffet, and the full-wall slideout create plenty of spacious living areas in this floorplan.

Dimensions shown are for sleeping space only and may vary due to styling differences. Dashed lines denote overhead storage areas. Floorplans and specifications are also available online at Goltasca.com.



36M

You will feel right at home in the lounge with two Ultraleather sofas, in the elegant galley with a pull-out island, and in the bedroom with its walk-around queen bed.

Dimensions shown are for sleeping space only and may vary due to styling differences. Dashed lines denote overhead storage areas. Floorplans and specifications are also available online at Goltasca.com.



36M

You will feel right at home in the lounge with two Ultraleather sofas, in the elegant galley with a pull-out island, and in the bedroom with its walk-around queen bed.

Dimensions shown are for sleeping space only and may vary due to styling differences. Dashed lines denote overhead storage areas. Floorplans and specifications are also available online at Goltasca.com.



40U

This impressive quad-slideout floorplan offers a spacious lounge, complete with an Ultraleather Rest Easy® Extendable Sectional Sofa, a Euro recliner with a pull-out table, and an optional fireplace.

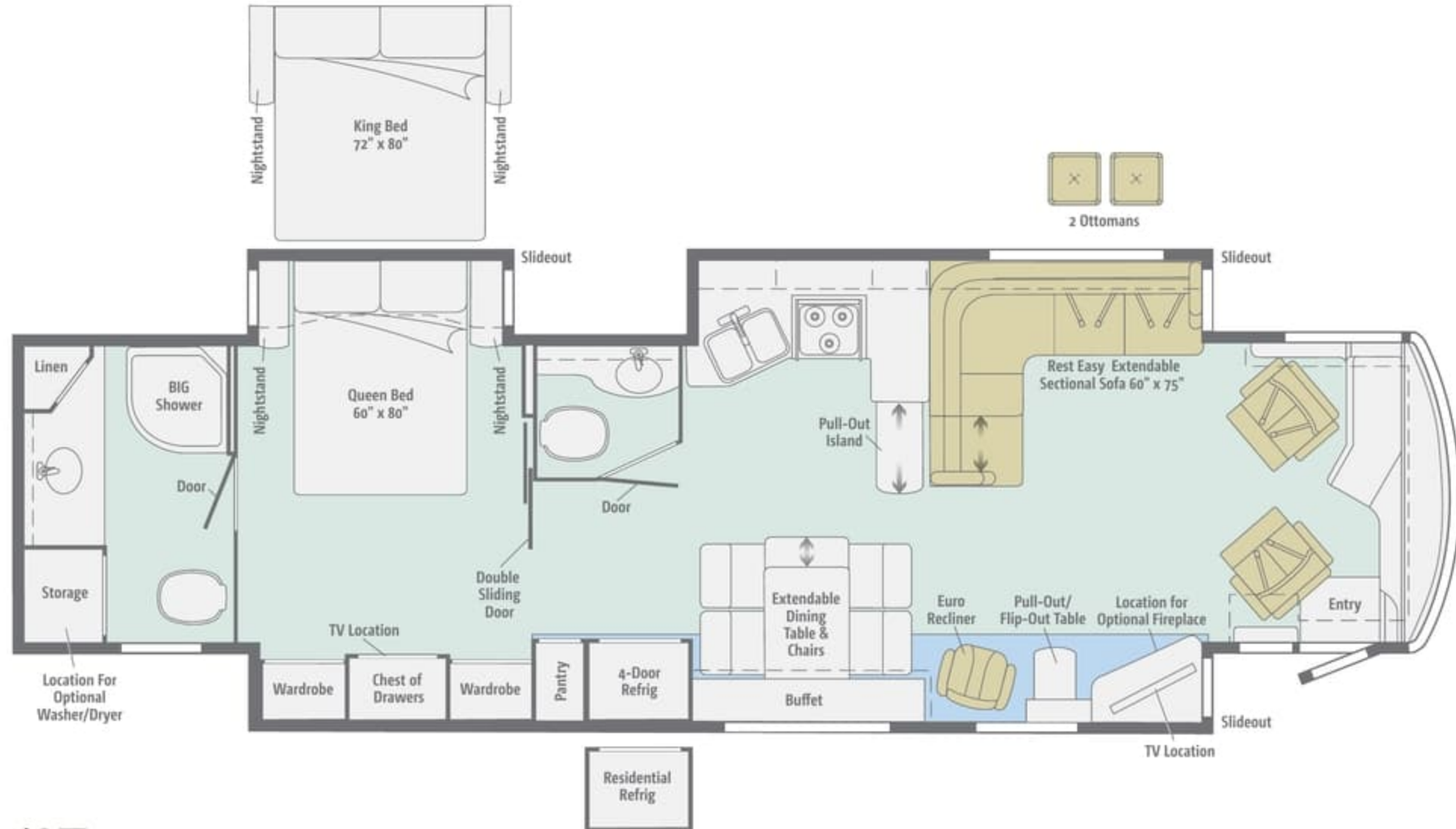
Dimensions shown are for sleeping space only and may vary due to styling differences. Dashed lines denote overhead storage areas. Floorplans and specifications are also available online at Goltasca.com.



40U

This impressive quad-slideout floorplan offers a spacious lounge, complete with an Ultraleather Rest Easy® Extendable Sectional Sofa, a Euro recliner with a pull-out table, and an optional fireplace.

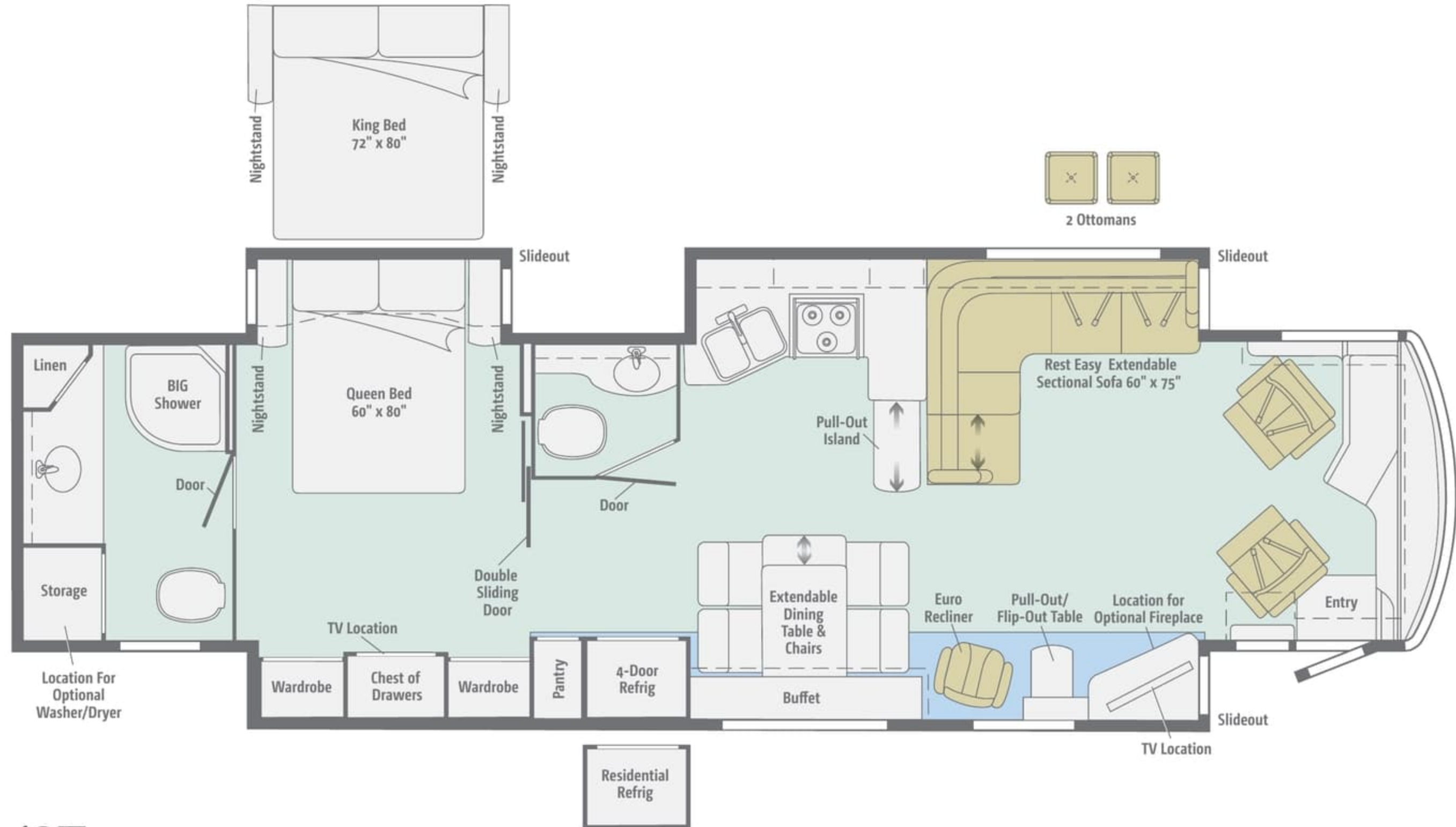
Dimensions shown are for sleeping space only and may vary due to styling differences. Dashed lines denote overhead storage areas. Floorplans and specifications are also available online at Goltasca.com.



42E

This impressive 42' floorplan offers an Ultraleather Rest Easy Extendable Sectional Sofa, an HDTV, an available fireplace, your choice of a queen or king bed, and a private master bath with the BIG Shower.

Dimensions shown are for sleeping space only and may vary due to styling differences. Dashed lines denote overhead storage areas. Floorplans and specifications are also available online at Goltasca.com.



42E

This impressive 42' floorplan offers an Ultraleather Rest Easy Extendable Sectional Sofa, an HDTV, an available fireplace, your choice of a queen or king bed, and a private master bath with the BIG Shower.

Choose from three fabric collections and three wood choices, each with Satin Nickel hardware.

Waldorf



Main



Ultraleather



Accent



Bedspread



Corian Countertop



Wall Board



Porcelain
Tile



Coffee-Glazed
Honey Cherry



Coffee-Glazed
Forest Cherry



Coffee-Glazed
Vienna Maple

Winnebago Industries® reserves the right to change décor materials and specifications without notice or obligation.

Choose from three fabric collections and three wood choices, each with Satin Nickel hardware.

Waldorf



Main



Ultraleather



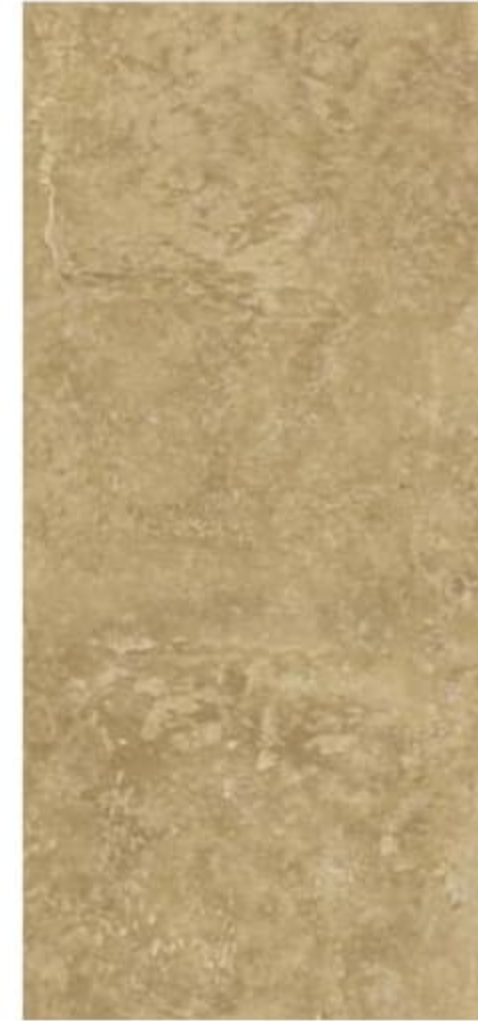
Accent



Bedspread



Corian Countertop



Wall Board



Porcelain
Tile



Coffee-Glazed
Honey Cherry



Coffee-Glazed
Forest Cherry



Coffee-Glazed
Vienna Maple

Winnebago Industries® reserves the right to change décor materials and specifications without notice or obligation.

Choose from three fabric collections and three wood choices, each with Satin Nickel hardware.

Whitesand



Main



Ultraleather



Accent



Bedspread



Corian Countertop



Wall Board



Porcelain
Tile



Coffee-Glazed
Honey Cherry



Coffee-Glazed
Forest Cherry



Coffee-Glazed
Vienna Maple

Winnebago Industries® reserves the right to change décor materials and specifications without notice or obligation.

Choose from three fabric collections and three wood choices, each with Satin Nickel hardware.

Whitesand



Main



Ultraleather



Accent



Bedspread



Corian Countertop



Wall Board



Porcelain
Tile



Coffee-Glazed
Honey Cherry



Coffee-Glazed
Forest Cherry



Coffee-Glazed
Vienna Maple

Winnebago Industries® reserves the right to change décor materials and specifications without notice or obligation.

Choose from three fabric collections and three wood choices, each with Satin Nickel hardware.

Westcott



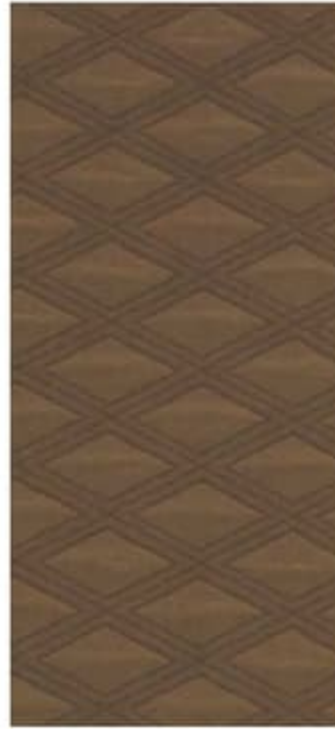
Main



Ultraleather



Accent



Bedspread



Corian Countertop



Wall Board



Porcelain
Tile



Coffee-Glazed
Honey Cherry



Coffee-Glazed
Forest Cherry



Coffee-Glazed
Vienna Maple

Winnebago Industries® reserves the right to change décor materials and specifications without notice or obligation.

Choose from three fabric collections and three wood choices, each with Satin Nickel hardware.

Westcott



Main



Ultraleather



Accent



Bedspread



Corian Countertop



Wall Board



Porcelain
Tile



Coffee-Glazed
Honey Cherry



Coffee-Glazed
Forest Cherry



Coffee-Glazed
Vienna Maple

Winnebago Industries® reserves the right to change décor materials and specifications without notice or obligation.

Six full-body paint styles, with a premier clearcoat finish that brings out the richness of each color, helps you stand out from the crowd.



Claret
FULL-BODY PAINT



Titanium
FULL-BODY PAINT

Six full-body paint styles, with a premier clearcoat finish that brings out the richness of each color, helps you stand out from the crowd.



Claret
FULL-BODY PAINT



Titanium
FULL-BODY PAINT

Six full-body paint styles, with a premier clearcoat finish that brings out the richness of each color, helps you stand out from the crowd.



Radiant Ruby
FULL-BODY PAINT



Light Sandalwood
FULL-BODY PAINT

Six full-body paint styles, with a premier clearcoat finish that brings out the richness of each color, helps you stand out from the crowd.



Radiant Ruby
FULL-BODY PAINT



Light Sandalwood
FULL-BODY PAINT

Six full-body paint styles, with a premier clearcoat finish that brings out the richness of each color, helps you stand out from the crowd.



Glacier
FULL-BODY PAINT



Graystone
FULL-BODY PAINT

Six full-body paint styles, with a premier clearcoat finish that brings out the richness of each color, helps you stand out from the crowd.



Glacier
FULL-BODY PAINT



Graystone
FULL-BODY PAINT

Weights & Measures

	34B	36M	40U	42E
Length	35'7"	37'3"	41'3"	43'7"
Exterior Height ¹	12'10"	12'10"	12'10"	12'11"
Exterior Width ²	8'5.5"	8'5.5"	8'5.5"	8'5.5"
Exterior Storage ³ (cu. ft.)	161	183	246	229
Awning Length	16'	20'	14'6"	20'
Interior Height	7'	7'	7'	7'
Interior Width	8'0.5"	8'0.5"	8'0.5"	8'0.5"
Freshwater Tank Capacity ⁴ (gal.)	85	85	85	85
Water Heater Capacity (gal.)	10	10	10	10
Holding Tank Capacity - Black/Gray ⁴ (gal.)	46/61	46/61	64/95	71/109
LP Capacity ⁵ (gal.)	28	28	28	28
Fuel Capacity (gal.)	100	100	100	100
GCWR ⁶ (lbs.)	33,000	42,350	47,320	59,320
GVWR (lbs.)	29,410	32,350	37,320	44,320
GAWR - Front (lbs.)	10,410	12,350	14,320	14,320
GAWR - Rear (lbs.)	19,000	20,000	23,000	30,000
Wheelbase	208"	228"	276"	279" + tag

TRW[®] tilt/telescopic steering column w/foot actuated pedal

Map lights

Power door lock w/remotes

C.B. wire prep

Optional Equipment

+Lounge passenger cab seat w/flip-up workstation

Interior

Dining table/buffet w/40" retractable HDTV (34B)

40" HDTV (mid-coach 36M, 40U)

46" HDTV (mid-coach 42E)

Blu-Ray™ Home Theater System

Satellite system ready

Digital TV amplified antenna system

HDMI Matrix central video selection system

Key-activated slideroom master lock switch

MCD solar/blackout roller shades

Soft vinyl ceiling

Accent rope lighting

OnePlace[®] systems center

Contour tinted windows

Powered ventilator fan (galley)

LED ceiling lights

Powered roof vent (bath)

Washer/dryer prep

Optional Equipment

Stacked washer and dryer

Electric fireplace (36M, 40U, 42E)

Winegard[®] Mission[®] in-motion satellite TV antenna

Winegard Trav'ler[®] automatic HDTV antenna

40" HDTV (front overhead) (36M)

FREIGHTLINER[®] MAXUM CHASSIS

340-hp Cummins[®] ISB 6.7L turbo-charged diesel engine (34B)

360-hp Cummins ISB XT 6.7L turbo-charged diesel engine (36M)

380-hp Cummins ISL 8.9L turbo-charged diesel engine (40U)

Tag-axle 400-hp Cummins ISL 8.9L turbo-charged diesel engine (42E)

Allison[®] 6-speed automatic 2500 MH transmission (34B)

Allison 6-speed automatic 3000 MH transmission (36M, 40U, 42E)

Information display center

Rear radiator

NeWay[®] front and rear air suspension

160-amp. alternator

Air brakes w/ABS

Engine exhaust brake

Quick-connect air connection w/manual shut off

Automatic hydraulic leveling jacks

7-pin trailer wiring

Trailer Hitch[®] 10,000-lb. drawbar/500-lb. maximum vertical tongue weight (34B, 36M, 40U)

Trailer Hitch[®] 15,000-lb. drawbar/1,500-lb. maximum vertical tongue weight (42E)

Stylized aluminum wheels

Cab Conveniences

Infotainment Center with Rand McNally RV GPS 10.4" touch screen color monitor w/split screen function, 2nd monitor, Rand McNally RV GPS safe and easy routing, amenities and tools, trips and content, turn-by-turn voice guidance, AM/FM radio w/CD/DVD player, steering wheel and handheld remote, SiriusXM™ (subscription not included), compass, outside temperature, iPod®/iPhone® audio integration, Bluetooth™, color rearview camera, sideview camera

Cab seats multi-position armrests, adjustable lumbar support, and multi-adjustable slide/recline/swivel

3-point seat belts

Power driver seat

Power passenger seat w/manual footrest

Cruise control

12-volt powerpoints

Powered stepwell cover

Powered MCD solar/blackout roller shades (front windshield)

Defroster fans

MCD solar/blackout roller shades (driver and passenger windows)

Chassis/house battery radio power switch

Power mirrors w/defrost, turn signal indicator, and sideview camera

Weights & Measures

	34B	36M	40U	42E
Length	35'7"	37'3"	41'3"	43'7"
Exterior Height¹	12'10"	12'10"	12'10"	12'11"
Exterior Width²	8'5.5"	8'5.5"	8'5.5"	8'5.5"
Exterior Storage³ (cu. ft.)	161	183	246	229
Awning Length	16'	20'	14'6"	20'
Interior Height	7'	7'	7'	7'
Interior Width	8'0.5"	8'0.5"	8'0.5"	8'0.5"
Freshwater Tank Capacity⁴ (gal.)	85	85	85	85
Water Heater Capacity (gal.)	10	10	10	10
Holding Tank Capacity - Black/Gray⁴ (gal.)	46/61	46/61	64/95	71/109
LP Capacity⁵ (gal.)	28	28	28	28
Fuel Capacity (gal.)	100	100	100	100
GCWR⁶ (lbs.)	33,000	42,350	47,320	59,320
GVWR (lbs.)	29,410	32,350	37,320	44,320
GAWR - Front (lbs.)	10,410	12,350	14,320	14,320
GAWR - Rear (lbs.)	19,000	20,000	23,000	30,000
Wheelbase	208"	228"	276"	279" + tag

TRW® tilt/telescopic steering column w/foot actuated pedal

Map lights

Power door lock w/remotes

C.B. wire prep

Optional Equipment

+Lounge passenger cab seat w/flip-up workstation

Interior

Dining table/buffet w/40" retractable HDTV (34B)

40" HDTV (mid-coach 36M, 40U)

46" HDTV (mid-coach 42E)

Blu-Ray™ Home Theater System

Satellite system ready

Digital TV amplified antenna system

HDMI Matrix central video selection system

Key-activated slideroom master lock switch

MCD solar/blackout roller shades

Soft vinyl ceiling

Accent rope lighting

OnePlace® systems center

Contour tinted windows

Powered ventilator fan (galley)

LED ceiling lights

Powered roof vent (bath)

Washer/dryer prep

Optional Equipment

Stacked washer and dryer

Electric fireplace (36M, 40U, 42E)

Winegard® Mission® in-motion satellite TV antenna

Winegard Trav'ler® automatic HDTV antenna

40" HDTV (front overhead) (36M)

FREIGHTLINER® MAXUM CHASSIS

340-hp Cummins® ISB 6.7L turbo-charged diesel engine (34B)

360-hp Cummins ISB XT 6.7L turbo-charged diesel engine (36M)

380-hp Cummins ISL 8.9L turbo-charged diesel engine (40U)

Tag-axle 400-hp Cummins ISL 8.9L turbo-charged diesel engine (42E)

Allison® 6-speed automatic 2500 MH transmission (34B)

Allison 6-speed automatic 3000 MH transmission (36M, 40U, 42E)

Information display center

Rear radiator

NeWay® front and rear air suspension

160-amp. alternator

Air brakes w/ABS

Engine exhaust brake

Quick-connect air connection w/manual shut off

Automatic hydraulic leveling jacks

7-pin trailer wiring

Trailer Hitch⁶ 10,000-lb. drawbar/500-lb. maximum vertical tongue weight (34B, 36M, 40U)

Trailer Hitch⁶ 15,000-lb. drawbar/1,500-lb. maximum vertical tongue weight (42E)

Stylized aluminum wheels

Cab Conveniences

Infotainment Center with Rand McNally RV GPS

10.4" touch screen color monitor w/split screen function, 2nd monitor, Rand McNally RV GPS safe and easy routing, amenities and tools, trips and content, turn-by-turn voice guidance, AM/FM radio w/CD/DVD player, steering wheel and handheld remote, SiriusXM™ (subscription not included), compass, outside temperature, iPod®/iPhone® audio integration, Bluetooth™, color rearview camera, sideview camera

Cab seats multi-position armrests, adjustable lumbar support, and multi-adjustable slide/recline/swivel

3-point seat belts

Power driver seat

Power passenger seat w/manual footrest

Cruise control

12-volt powerpoints

Powered stepwell cover

Powered MCD solar/blackout roller shades (front windshield)

Defroster fans

MCD solar/blackout roller shades (driver and passenger windows)

Chassis/house battery radio power switch

Power mirrors w/defrost, turn signal indicator, and sideview camera

Galley

Corian® countertops and decorative backsplash
 4-door refrigerator/freezer w/ icemaker
 Microwave/convection oven w/vented range fan
 3-burner range top w/storage below
 Corian range and sink covers
 Cold water filtration system

Optional Equipment

3-burner range w/oven

Residential stainless steel French door refrigerator w/ice/water dispenser and bottom freezer drawer (w/2,800-watt inverter and 2 additional 12-volt coach batteries)

Bath

Corian countertop and backsplash
 Flexible showerhead
 Textured glass shower door
 Skylight
 Porcelain toilet
 Area rug (42E)

Bedroom

26" HDTV (42E)
 32" HDTV (34B, 36M, 40U)
 Queen bed w/innerspring mattress (34B, 36M, 40U)
 Powered queen bed w/Ideal Rest® Natural Reserve digital comfort control mattress w/remotes (42E)
 Bedspread, pillows, and pillow shams
 Ceiling fan

Optional Equipment

28" HDTV (42E)

Powered king bed w/Ideal Rest Natural Reserve digital comfort control mattress w/remotes (42E)

King bed w/Ideal Rest Natural Reserve digital comfort control mattress w/remotes (34B, 40U)

Queen bed w/Ideal Rest Natural Reserve digital comfort control mattress w/remotes (34B, 36M, 40U)

Exterior

Powered patio awning w/wind sensor and LED lighting
 KeyOne® lock system
 Porch lights
 Powered entrance awning
 Lighted storage compartments
 Driver's side docking/service light
 Lighted stepwell
 Storage containers w/lids (4)
 Movable/removable floor panels in main storage bay
 Automatic entrance steps
 Auxiliary side lamps
 Full-width mudguard
 Lower front protective mask
 Premier clearcoat automotive finish

Optional Equipment

Entertainment Center 32" HDTV

Slideout storage compartment tray

Portable refrigerator/freezer on roll-out tray (36M, 40U, 42E)

Ladder

Heating & Cooling System

TrueAir® Maximum Comfort A/C, 13,500 BTU (2 cooling units 34B, 36M; 3 cooling units 40U, 42E)

A/C heat pumps

Two 20,000 BTU ducted furnaces (34B, 36M)

One 20,000 BTU ducted furnace and one 25,000 BTU ducted furnace (40U, 42E)

Dual-zone thermostat (34B, 36M)

Triple-zone thermostat (40U, 42E)

Electrical System

Service Center lighted, cable input, 50-amp. power cord, QuickPort® shoreline/generator automatic changeover switch, portable satellite hookup

2,000-watt inverter/charger w/remotely panel (2,800-watt w/optional French door refrigerator)

8,000-watt Cummins Onan® Quiet Diesel™ generator

Cummins Onan Energy Command™ automatic generator start system

Auxiliary start circuit

AC/DC electrical distribution system

Four Deep-cycle Group 31 marine/RV AGM batteries (Six batteries w/optional French door refrigerator)

Battery disconnect system (coach and chassis)

PowerLine® Energy Management System

Automatic dual-battery charge control

Chassis battery charger/maintainer

Exterior TV jack and AC duplex

Optional Equipment

100-watt solar panel battery charger

Plumbing System

Service Center pressurized city water hookup w/diverter fill, fresh water drain, drainage valves, exterior wash station w/pump switch, holding-tank flushing system, 20' sewer hose w/QuickConnect®, QuickPort

On-demand water pump

10-gallon water heater 110V/LP gas w/motoraid

TrueLevel™ holding-tank monitoring system

Winterization Package water heater bypass valve and siphon tube

Full-coach water filtration system

Permanent-mount LP tank w/gauge

LPG accessory connection (patio area)

Heated holding-tank compartment

Safety

LP, smoke and carbon monoxide detectors

10 BC fire extinguisher

Ground fault interrupter

Fog lamps

High-mount brake lamps

Daytime running lamps

Warranty⁷

12-month/15,000-mile basic limited warranty⁸

36-month/36,000-mile limited warranty on structure⁸

10-year limited parts-and-labor warranty on roof skin⁸

- The height of each model is measured to the top of the tallest standard feature and is based on the curb weight of a typically equipped unit. The actual height of your vehicle may vary by several inches depending on chassis or equipment variations. Please contact your dealer for further information.
- Floorplans feature a wide-body design—over 96." In making your purchase decision, you should be aware that some states restrict access on some or all state roads to 96" in body width. Before making your purchase decision, you should confirm the road usage laws in the states of interest to you.
- The load capacity of your motorhome is designated by weight, not by volume, so you cannot necessarily use all available space when loading your motorhome.
- Capacities are based on measurements prior to tank installation. Slight capacity variations can result due to installation applications.
- Capacities shown are tank manufacturer's listed water capacity (W.C.). Actual filled LP capacity is 80% of listing due to overfilling prevention device on tank.
- Actual towing capacity is dependent on your particular loading and towing circumstances which includes the GVWR, GAWR, and GCWR, as well as adequate trailer brakes. Please refer to the Operator's Manual of your vehicle for further towing information.
- See separate chassis warranty.
- See your dealer for complete warranty information.

NA Not Available

Not all items available in combination. See dealer for details.

Winnebago Industries™ continuing program of product improvement makes specifications, equipment, model availability, and prices subject to change without notice. Published content reflects the most current product information at time of printing. Please consult your dealer for individual vehicle features and specifications.

Galley

Corian® countertops and decorative backsplash
 4-door refrigerator/freezer w/icemaker
 Microwave/convection oven w/vented range fan
 3-burner range top w/storage below
 Corian range and sink covers
 Cold water filtration system

Optional Equipment

3-burner range w/oven
 Residential stainless steel French door refrigerator w/ice/water dispenser and bottom freezer drawer (w/2,800-watt inverter and 2 additional 12-volt coach batteries)

Bath

Corian countertop and backsplash
 Flexible showerhead
 Textured glass shower door
 Skylight
 Porcelain toilet
 Area rug (42E)

Bedroom

26" HDTV (42E)
 32" HDTV (34B, 36M, 40U)
 Queen bed w/innerspring mattress (34B, 36M, 40U)
 Powered queen bed w/Ideal Rest® Natural Reserve digital comfort control mattress w/remotes (42E)
 Bedspread, pillows, and pillow shams
 Ceiling fan

Optional Equipment

28" HDTV (42E)
 Powered king bed w/Ideal Rest Natural Reserve digital comfort control mattress w/remotes (42E)
 King bed w/Ideal Rest Natural Reserve digital comfort control mattress w/remotes (34B, 40U)
 Queen bed w/Ideal Rest Natural Reserve digital comfort control mattress w/remotes (34B, 36M, 40U)

Exterior

Powered patio awning w/wind sensor and LED lighting
 KeyOne® lock system
 Porch lights
 Powered entrance awning
 Lighted storage compartments
 Driver's side docking/service light
 Lighted stepwell
 Storage containers w/lids (4)
 Movable/removable floor panels in main storage bay
 Automatic entrance steps
 Auxiliary side lamps
 Full-width mudguard
 Lower front protective mask
 Premier clearcoat automotive finish

Optional Equipment

Entertainment Center 32" HDTV
 Slideout storage compartment tray
 Portable refrigerator/freezer on roll-out tray (36M, 40U, 42E)
 Ladder

Heating & Cooling System

TrueAir® Maximum Comfort A/C, 13,500 BTU (2 cooling units 34B, 36M; 3 cooling units 40U, 42E)
 A/C heat pumps
 Two 20,000 BTU ducted furnaces (34B, 36M)
 One 20,000 BTU ducted furnace and one 25,000 BTU ducted furnace (40U, 42E)
 Dual-zone thermostat (34B, 36M)
 Triple-zone thermostat (40U, 42E)

Electrical System

Service Center lighted, cable input, 50-amp. power cord, QuickPort®, shoreline/generator automatic changeover switch, portable satellite hookup
 2,000-watt inverter/charger w/remote panel (2,800-watt w/optional French door refrigerator)
 8,000-watt Cummins Onan® Quiet Diesel™ generator
 Cummins Onan Energy Command™ automatic generator start system
 Auxiliary start circuit
 AC/DC electrical distribution system
 Four Deep-cycle Group 31 marine/RV AGM batteries (Six batteries w/optional French door refrigerator)
 Battery disconnect system (coach and chassis)
 PowerLine® Energy Management System
 Automatic dual-battery charge control
 Chassis battery charger/maintainer
 Exterior TV jack and AC duplex

Optional Equipment

100-watt solar panel battery charger

Plumbing System

Service Center pressurized city water hookup w/diverter fill, fresh water drain, drainage valves, exterior wash station w/pump switch, holding-tank flushing system, 20' sewer hose w/QuickConnect®, QuickPort
 On-demand water pump
 10-gallon water heater 110V/LP gas w/motoraid
 TrueLevel™ holding-tank monitoring system
 Winterization Package water heater bypass valve and siphon tube
 Full-coach water filtration system
 Permanent-mount LP tank w/gauge
 LPG accessory connection (patio area)
 Heated holding-tank compartment

Safety

LP, smoke and carbon monoxide detectors
 10 BC fire extinguisher
 Ground fault interrupter
 Fog lamps
 High-mount brake lamps
 Daytime running lamps

Warranty⁷

12-month/15,000-mile basic limited warranty⁸
 36-month/36,000-mile limited warranty on structure⁸
 10-year limited parts-and-labor warranty on roof skin⁸

- The height of each model is measured to the top of the tallest standard feature and is based on the curb weight of a typically equipped unit. The actual height of your vehicle may vary by several inches depending on chassis or equipment variations. Please contact your dealer for further information.
- Floorplans feature a wide-body design—over 96". In making your purchase decision, you should be aware that some states restrict access on some or all state roads to 96" in body width. Before making your purchase decision, you should confirm the road usage laws in the states of interest to you.
- The load capacity of your motorhome is designated by weight, not by volume, so you cannot necessarily use all available space when loading your motorhome.
- Capacities are based on measurements prior to tank installation. Slight capacity variations can result due to installation applications.
- Capacities shown are tank manufacturer's listed water capacity (W.C.). Actual filled LP capacity is 80% of listing due to overfilling prevention device on tank.
- Actual towing capacity is dependent on your particular loading and towing circumstances which includes the GVWR, GAWR, and GCWR, as well as adequate trailer brakes. Please refer to the Operator's Manual of your vehicle for further towing information.
- See separate chassis warranty.
- See your dealer for complete warranty information.

NA Not Available
 Not all items available in combination. See dealer for details.
 Winnebago Industries® continuing program of product improvement makes specifications, equipment, model availability, and prices subject to change without notice. Published content reflects the most current product information at time of printing. Please consult your dealer for individual vehicle features and specifications.



GOITASCA.COM
HAS ALL THE ANSWERS

Visit **Goltasca.com** on your computer, smartphone or tablet for the latest product information and updates.

COMMITTED TO SERVICE

 **PREFERRED CARE PROGRAM**

We back our motorhomes with best-in-class support both before and after the sale:

- 12-month/15,000-mile basic limited warranty
- 36-month/36,000-mile limited warranty on structure
- 10-year limited parts-and-labor warranty on roof skin
- Complimentary 24-hour roadside assistance program



TRIP Saver
FAST TRACK PARTS

- TripSaver® Fast Track Parts guarantees that in-stock warranty parts ship directly to your dealer within 24 hours
- National dealer service network



WIT CLUB

JOIN THE CLUB, JOIN THE FUN

As an Itasca motorhome owner, you are invited to join the WIT Club. It's a great way to take full advantage of your new coach and meet fun-loving WIT Club members from across the country who make motorhome adventures a way of life.



Members enjoy:

- Caravans and rallies
- Newsletters
- Local and state group activities
- RV travel benefits

See more at **WITclub.com**



GRAND NATIONAL RALLY

In 1969, two things happened: Neil Armstrong took mankind's first steps on the moon, and Winnebago Industries' WIT Club launched its first Grand National Rally in Forest City, Iowa. Every year since then, thousands of rally-goers connect with old friends to enjoy concerts, tours, activities, and more. Blast off for an adventurous week in July to celebrate 45 years of interstate land roving at the 2014 "Out of This World" Grand National Rally. It's a mission you'll never forget!

GOITASCA.COM
HAS ALL THE ANSWERS



Visit **GoItasca.com** on your computer, smartphone or tablet for the latest product information and updates.

COMMITTED TO SERVICE

 **PREFERRED CARE PROGRAM**

We back our motorhomes with best-in-class support both before and after the sale:

- 12-month/15,000-mile basic limited warranty
- 36-month/36,000-mile limited warranty on structure
- 10-year limited parts-and-labor warranty on roof skin
- Complimentary 24-hour roadside assistance program



TRIP Saver
FAST TRACK PARTS

- TripSaver® Fast Track Parts guarantees that in-stock warranty parts ship directly to your dealer within 24 hours
- National dealer service network



WIT CLUB

JOIN THE CLUB, JOIN THE FUN

As an Itasca motorhome owner, you are invited to join the WIT Club. It's a great way to take full advantage of your new coach and meet fun-loving WIT Club members from across the country who make motorhome adventures a way of life.



Members enjoy:

- Caravans and rallies
- Newsletters
- Local and state group activities
- RV travel benefits

See more at **WITclub.com**



GRAND NATIONAL RALLY

In 1969, two things happened: Neil Armstrong took mankind's first steps on the moon, and Winnebago Industries' WIT Club launched its first Grand National Rally in Forest City, Iowa. Every year since then, thousands of rally-goers connect with old friends to enjoy concerts, tours, activities, and more. Blast off for an adventurous week in July to celebrate 45 years of interstate land roving at the 2014 "Out of This World" Grand National Rally. It's a mission you'll never forget!