

DYNAMAX 
A DIVISION OF FOREST RIVER

DIFFERENT BY DESIGN



5 SERIES *isata*



36DS with Espresso Décor and Early American Cherry Cabinets

Isata 5 Series Dynamax Style - Bumper to Bumper

Quality craftsmanship and innovative features have long been associated with Dynamax motorhomes. In the driver's seat of the Isata 5, you'll enjoy the confidence that comes with the control, comfort, and stability of the Ram 5500. Meanwhile, everywhere you look you'll see the extra touches – including cut and buffed paint, RV-friendly features, and ambient lighting. So wherever your journeys take you – along the busy highway or up the mountain pass, (or even on the “roads less traveled” with the optional 4x4 chassis), the Isata 5 will provide freedom and comfort like nothing else on the road.



36DS with Espresso Décor and Early American Cherry Cabinets



36DS with Seashore Décor and Early American Cherry Cabinets

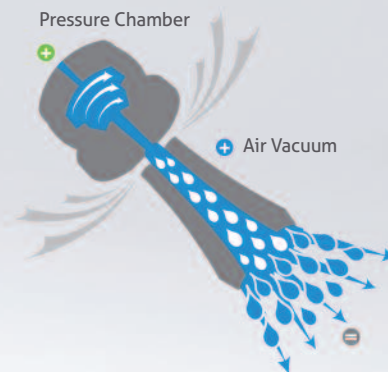


The Isata 36DS master bedroom is furnished with a comfortable iCool™ mattress. In addition, USB and 110V outlets on both sides of the bed provide convenient charging for all your devices.



Multi-Plex wiring has been incorporated in the automotive industry for many years. This advanced wiring system requires fewer relays, connections, and wires, which reduces potential failure points. Color-coding and a programmable touch screen also makes it easier to troubleshoot if a problem occurs.

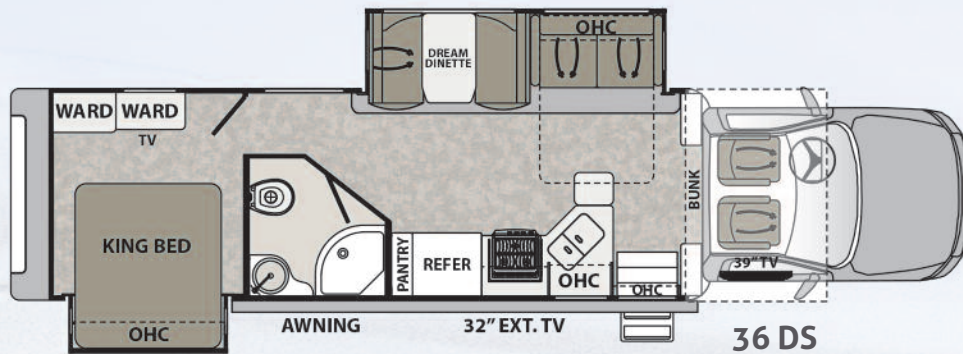
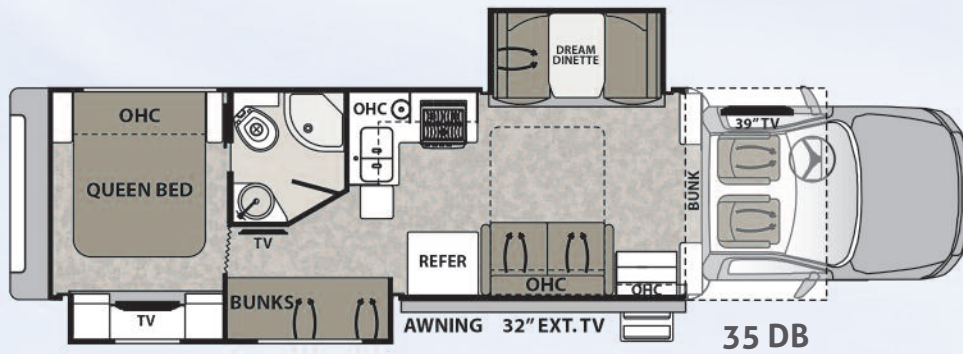
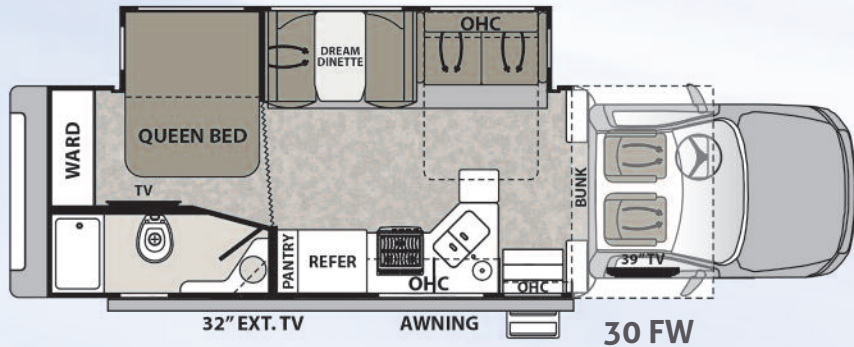
Say, "So Long" to wimpy RV Showers



The patented **Oxygenics Engine** supercharges any water pressure, turning weak flows into satisfying showers. It is effective in reducing wash and rinse times, especially for those with long hair. All while saving water, so your tanks last longer.

- Water is introduced into a **pressure chamber** that works like a mini turbine jet, increasing water velocity.
- Water passes through an **air vacuum** at high speed, infusing oxygen into each drop.
- The pressurized combination of water and oxygen is released through an expanding nozzle, widening **spray** and greatly increasing water power.

Isata 5 Standard Features & Options



Chassis

- Ram® 5500 SLT Chassis
- Cummins® 6.7L I6 Turbo Diesel Engine (325hp/750 ft.-lbs. of Torque)
- AISIN® HD 6-Speed Automatic Transmission
- 52-Gallon Fuel Tank
- 9-Gallon Diesel Exhaust Fluid Tank
- Trailer Hitch (10,000 Tow lbs.) with 7-Way Round Tow Connection
- Trailer Brake Control
- Cummins® Smart Exhaust Brake System
- Ram® ESC Suspension and Stability Package
- Momentary Battery Booster Switch for Connecting Chassis and House Batteries
- Dual 12V Chassis Batteries
- Dual 220-Amp Alternators (440 Total Amps)
- 4-Wheel ABS
- B-20 Bio Diesel Capability
- Ram® 50KSI Chassis Construction
- Aluminum Running Boards
- Front and Rear Tires: 225/70R19.5G (All Position Front And Rear Traction)
- Single Front Wheels: Aluminum (19.5" x 6.0")
*Outside Rims are Polished
- Dual Rear Wheels: Aluminum (19.5" x 6.0")
*Outside Rims are Polished
- 4.88 Rear Axle Ratio
- Daytime Running Lights
- Leatherette Reclining Driver and Passenger Seats
- Power Driver Seat
- Backup Camera
- 8.4" Touch Screen Dash Radio with U-Connect®, Hands-Free Voice Command with Bluetooth®, Sirius/XM® Radio-Ready, Media Hub (SD, USB, AUX), and Six (6) Speakers

- Navigation-Capable: with Installation of GPS Module Available from your Local Ram® Dealer
- 12V and USB Accessory Ports
- Temperature/Compass Gauge with Traveler/Mini-Trip Computer
- Cruise Control
- Adjustable Steering Column
- Power and Heated Exterior Mirrors with Courtesy Lamps and Turn Signals
- Power Windows and Locks
- 3-Point Seat Belts
- Front Safety Airbags
- Drink Holders

Construction

- 2" Aluminum-Framed, Laminated Sidewalls with Block Foam Insulation
- Gel-Coat Fiberglass Walls with Azdel® Backing
- Aluminum-Framed Floor
- Aluminum-Framed Roof Trusses
- Crowned, One-Piece Fiberglass Roof
- Foil-Lined Ductwork Throughout
- Fiberglass Front Cap, Rear Cap, and Front Wing Panels
- Automatic, 4-Point Hydraulic Leveling Jacks
- Dark-Tinted, Frameless Windows
- Seamless, Easy-Clean Rotocast Storage Compartments
- Side-Hinged, Locking Aluminum Exterior Storage Doors with Paddle Latches
- Electric Slide System

Exterior

- Custom Full Body Paint Package with Diamond Shield® Paint Protection
- Dual-Pitch, Armless Patio Awning with LED Lighting and Motion-Activated Retraction
- Slideout Toppers
- LED Patio Light
- Entry Door with Rotary Latch; Dark-Tinted, Frameless Window; and Shade
- Keyless Entry Touch Pad at Coach Door
- Lighted Acrylic Entry Grab Handle
- Power Entry Steps
- Exterior Wall-Mounted Entertainment Center with 32" LED TV, AM/FM/CD/DVD Module, and Two (2) Speakers
- Front and Rear LED Clearance and Marker Lighting
- Rear LED Docking Lights

Key Dimensions:	30 FW	35 DB	36 DS
GVWR	19,500 lbs.	19,500 lbs.	19,500 lbs.
GCWR	37,500 lbs.	37,500 lbs.	37,500 lbs.
GAWR - Front	7,000 lbs.	7,000 lbs.	7,000 lbs.
GAWR - Rear	13,500 lbs.	13,500 lbs.	13,500 lbs.
Overall Length	32' 0"	36' 5"	36' 5"
Exterior Width	96"	96"	96"
Wheelbase	237.5"	264.5"	264.5"
Overall Exterior Height (w/15,000 BTU Roof A/C)	12'4"	12'4"	12'4"
Interior Height	82"	82"	82"
Fuel Capacity	52 Gal.	52 Gal.	52 Gal.
Water Capacities (Gal.)			
Fresh/Gray/Black	78/42/42	95/42/42	95/42/42
LPG Capacity	20.3 Gal./86 lb.	20.3 Gal./86 lb.	20.3 Gal./86 lb.
Awning Length	16'	10'	16'

Please refer to the chart on the back cover for chart definitions.

Interior

- Front Cab-Over Bunk Area with Mattress (54"x80")
- Premium Vinyl Flooring
- Deluxe Carpet with Pad in Living Area Slide Room(s)
- Soft-Touch Padded Vinyl Ceiling
- LED Recessed Ceiling Lights
- Coordinating Window Treatments with "Quick Change" Fabric Panels
- Blackout Roller Shades
- Hardwood Raised Panel Cabinet Doors and Drawer Fronts
- Full Extension, Soft-Closing Drawer Guides (where applicable)
- Hidden Hinges
- 39" LED TV (Living Area)
- Blu-Ray® Home Theater AM/FM/CD/DVD System with 5.1 Surround Sound (Living Area)
- Lighted Entry with Non-Skid Rubber Steps and Risers
- Privacy Curtain for Cab-Over Bunk
- Thermal, Reflective Front Privacy Shades
- USB Charging Ports

Kitchen

- 16 Cu. ft. Residential Refrigerator with Ice Maker (Double-Door and Stainless Steel)
- Sealed Gas Range with Glass Cover
- Convection Microwave Oven
- Solid Surface Countertops
- Double-Bowl Stainless Steel Sink with Covers
- Residential Single-Handle Faucet with Sprayer
- Pantry (Floor Plan Specific)
- Under-Cabinet Lighting
- Kitchen Trash Can (Floor Plan Specific)
- MaxxAir® Power Vent with Built-In Rain Cover and Remote

Bedroom or Bunk Area

- 36DS: King Bed (67"x75") with iCool® Gel-Infused Memory Foam Mattress
- 35DB: Queen Bed (60"x75") with iCool® Gel-Infused Memory Foam Mattress
- Designer Bed Package
- 32" LED TV
- Cedar-Lined Wardrobe
- Deluxe Padded Headboard
- LED Reading Lights
- USB Charging Ports
- 35DB: Upper Bunk Bed (28"x76") and Lower Bunk Jackknife Sofa
- 35DB: LED TV in Bunk Bed Area

Bathroom

- ABS Shower
- Shower Skylight
- Oxygenics Body Spa® RV Shower Head
- Residential Faucet with Sink
- Porcelain Toilet (Macerating Toilet: Floor Plan Specific)
- MaxxAir® Power Vent with Built-In Rain Cover and Remote

Utilities

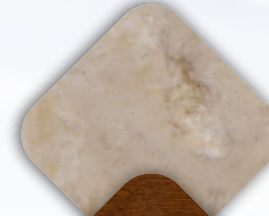
- Dual 12V Group 27 AGM Deep-Cycle, Maintenance-Free Batteries
- Multiplex® Wiring with Touch Screen Command Center, Back-Lit Switch Panels, and Bluetooth® Smart Phone App Control
- Battery Disconnect
- 50-Amp Service
- 2000W Pure Sine Wave Inverter/Charger
- 6kW Onan® Diesel Generator with Auto Transfer Switch (Mounted on Isolator Pads)
- Automatic Generator Start
- Dual Roof-Mount and Ducted 15,000-BTU Air Conditioners with Heat-Pumps
- 42,000-BTU LP Furnace with Electronic Ignition
- 60,000-BTU Truma® Aqua Go™ On-Demand Water Heater (LP)
- Thermostatically-Controlled Heating and Cooling
- 20.3-Gallon LP Tank (WC)
- LP Quick Connect
- Water Filtration System
- Exterior Digital Monitor Panel with LP/Tank Readout in Service Bay
- Exterior Shower in Service Bay
- Exterior GFCI Receptacle
- Jack® Digital Antenna with LED Signal Strength Indicator
- Cable TV/Satellite Hookup in Service Bay
- Black Tank Flush
- Furnace-Heated Utility Compartment
- 12V On-Demand Water Pump
- Carbon-Monoxide, LP, and Smoke Detectors
- Fire Extinguisher

Options

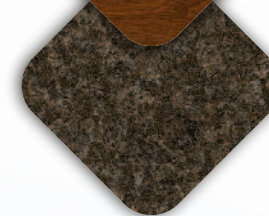
- Factory 4-Wheel Drive
- 9 cu ft. 2-Way Refrigerator (Two-Door)
- 8kW Onan® Diesel Generator with Auto Transfer Switch
- Winegard® In-Motion T4 Satellite (Dish® SD-HD, DirecTV® SD, BellTV® SD-HD)
- Solar Panels - Two 100 Watt with 30 Amp Controller

Décor Selections

Solid Surface Galley



Cabinets

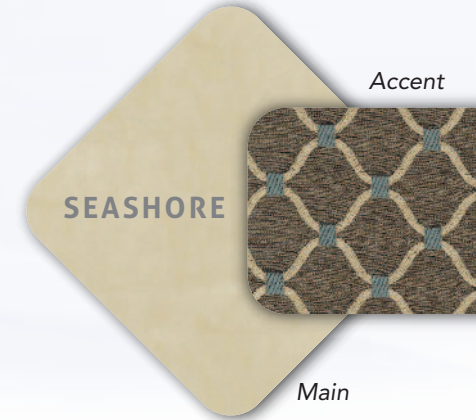


Other Counters



Flooring

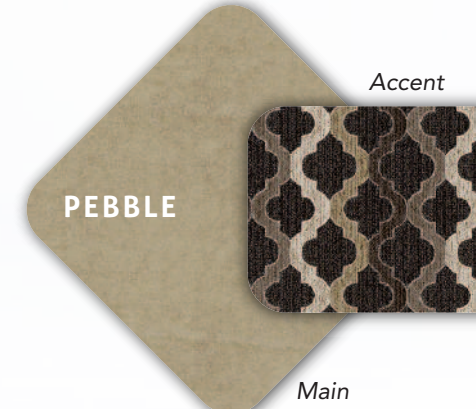
SEASHORE



Accent

Main

PEBBLE



Accent

Main

ESPRESSO

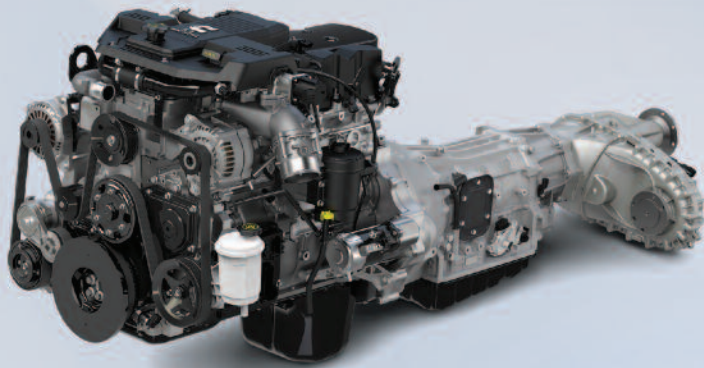


Accent

Main

Isata 5 Series

Powered by Cummins®



The Isata 5 is powered by the proven and legendary 6.7L Cummins® Turbo Diesel I6 Engine.

- 325 Horsepower
- Unsurpassed 750 Pound-Feet of Torque
- Smart Exhaust Brake
- Class-Exclusive Dual Alternators with 440 Amps of Output
- Best-In-Class 33,500 Max GCWR
- Built-In Trailer Brake Control



DYNAMAX
A DIVISION OF FOREST RIVER

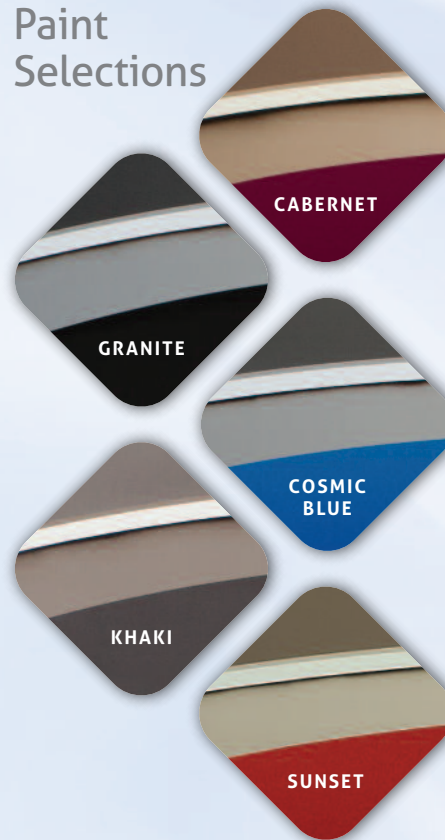
DIFFERENT BY DESIGN

2745 Northland Dr. ■ Elkhart IN 46514
888-295-7859 ■ www.dynamaxcorp.com

Dynamax Owner "Digital Kit" App
Now you can have your Owner's Manual with you wherever you are. Download our FREE App from the App Store or Google Play and you'll have the information right at your fingertips.



Paint Selections



PRE-DELIVERY INSPECTION FACILITY

20,000 square feet of quality assurance. The bare essentials for a premium product. This state-of-the-art facility gives immediate daily feedback to production for quality assurance in every unit built.

24/7 EMERGENCY ROADSIDE ASSISTANCE

For a worry-free ownership experience Forest River includes one year of Coach-Net RV Technical & Roadside Assistance with each RV purchase. Whether new to the RV lifestyle or an experienced RV enthusiast, Forest River owners have 24/7 access to technical, operational and emergency road service coverage throughout the US & Canada. Coach-Net's fast, dependable service is just a phone call away.

Coach-Net®

FREE MEMBERSHIP
to Forest River Owners' Group

www.forestriverfrog.com



CUSTOMER SATISFACTION



www.ForestRiverBuyLocal.com

Your Authorized Isata 5 Dealer

GVWR (Gross Vehicle Weight Rating) - is the maximum permissible weight of the unit when fully loaded. It includes all weights, inclusive of all fluids, occupants, cargo, optional equipment and accessories. For safety and product performance do NOT exceed the GVWR.

GCWR (Gross Combined Weight Rating) - Is the maximum permissible loaded weight of your motor home and any towed trailer or towed vehicle. Actual GCWR of this vehicle may be limited by the sum of the GVWR and the installed hitch receiver maximum capacity rating; see hitch rating label for detail.

GAWR (Gross Axle Weight Rating) - is the maximum permissible weight, including cargo, fluids, optional equipment and accessories that can be safely supported by each axle.

UVW (Unloaded Vehicle Weight)* - is the typical weight of the unit as manufactured at the factory. It includes all weight at the unit's axle(s), including full fuel, all fluids and LP Gas. The UVW does not include cargo, fresh potable water, additional optional equipment or dealer installed accessories.

CCC (Cargo Carrying Capacity)** - is the amount of weight available for fresh potable water, cargo, passengers, additional optional equipment and accessories. CCC is equal to GVWR minus UVW. Available CCC should accommodate fresh potable water (8.3 lbs. per gallon). Before filling the fresh water tank, empty the black and gray tanks to provide for more cargo capacity.

*Estimated Average based on standard build optional equipment.

**Estimated average based on standard build optional equipment.

Each Forest River RV is weighed at the manufacturing facility prior to shipping. A label identifying the unloaded vehicle weight of the actual unit and the cargo carrying capacity is applied to every Forest River RV prior to leaving our facilities.

The load capacity of your unit is designated by weight, not by volume, so you cannot necessarily use all available space when loading your unit.

Actual towing capacity is dependent upon your particular loading and towing circumstances, which includes the GVWR, GAWR and GCWR as well as adequate trailer brakes. Please refer to the Operator's Manual of your vehicle for further towing information.

All information contained in this brochure is believed to be accurate at the time of publication. However, during the model year, it may be necessary to make revisions and Forest River, Inc., reserves the right to make all such changes without notice, including prices, colors, materials, equipment and specifications as well as the addition of new models and the discontinuance of models shown in this brochure. Therefore, please consult with your Forest River dealer and confirm the existence of any materials, design or specifications that are material to your purchase decision.

©2017 Dynamax 5/17

Find us on **Facebook**



Learn More
Scan this barcode using a QR Reader on your smart phone to learn more about Forest River.



A Berkshire Hathaway company.