

# Vista

**WINNEBAGO**<sup>TM</sup>



## Why Vista?

- Seven family-friendly floorplans
- LED ceiling lights (NA 26HE, 31KE)
- Corian® galley countertops (Laminate 26HE, 31KE)
- Master walk-around queen bed or available king bed (36Y)
- MCD blackout roller shades
- Ultraleather™ swivel cab seats (Primera 26HE, 31KE)
- Private master bath and guest half bath (35B, 35F)
- Available StudioLoft™





On the Cover: 36Y Cayenne Full-Body Paint

36Y Four Seasons with Forest Cherry Cabinetry

## Unparalleled Class A Value

When it comes to the value and motorhomes, the Vista® stands out from the crowd. Among seven luxurious layouts to choose from, we have added the new triple-slideout 36Y featuring a unique galley design with residential refrigerator, two-tiered galley countertop, dining table/buffet with HDTV, plentiful storage, and a walk-around queen bed

or available king bed. For even more sleeping space, the StudioLoft™ drop-down bed is available on all models. To us, value means offering quality standard features such as MCD blackout roller shades, powered patio awnings, and rearview monitors. Add in Winnebago's® legendary reputation for quality and you have an unbeatable value in your Vista.




**Recognized Quality** The Recreation Vehicle Dealer Association annually rates RV manufacturers and awards the Quality Circle Award to manufacturers that provide exceptional products, service, and support. Winnebago is proud to be the only manufacturer that has received this award every year since its inception.



## Best in Class

See how Winnebago takes motorhome design and function to the next level, and why we've earned the right to be called the Most Recognized Name in Motorhomes.®

 Click on this icon throughout the brochure to link to more information on the web.



Turn your cab into a second bedroom with the available powered **StudioLoft™** that drops down from the cab ceiling for an additional sleeping space.



Settle into your home on wheels with stylish decorating including frosted glass cabinet doors, an available galley backsplash upgrade, and the two-tiered Corian® countertop in the 36Y.



With the **Dining Table and Chairs**, (30T, 36Y) you can serve two or extend the table to accommodate four people. The HDTV smoothly retracts into the buffet to reveal more space for your serving needs.



Enjoy the modern conveniences of the cab with the **Radio/Rearview Monitor System** with color camera and available SiriusXM™ satellite radio (subscription not included) (NA 26HE, 31KE).



The Vista allows you to create your ideal living space with seven unique floorplans and numerous furniture options. From a sofa/bed to the available Comfort Sofa Sleeper (27N, 30T, 35B) to the Extendable Sectional Sofa (35F), your lounge can easily accommodate many guests or just the family. The Ultraleather™ cab seats (Primera 26HE, 31KE) swivel around to become part of the living area. Enjoy controlling the lighting and privacy levels with the MCD solar/blackout roller shades and LED ceiling lights (NA 26HE, 31KE).



36Y Four Seasons with Forest Cherry Cabinetry



36Y Sofa/Sleeper with Footrest



MCD Solar/Blackout Roller Shades



Enjoy preparing delicious meals or late night snacks in this full-featured galley with its three-burner range, microwave oven, and a two-door refrigerator/freezer or the available four-door refrigerator/freezer with icemaker (35B, 35F, 36Y). Elegant Corian® countertops (laminates in 26HE, 31KE) and full-extension drawer slides ensure plenty of storage space for your cooking supplies.



36Y Galley



3-Burner Range and Microwave Oven



Available 4-Door Refrigerator/Freezer with Icemaker





36Y Bedroom

Most floorplans include a slideout in the bedroom and each layout features a walk-around queen bed, while the new 36Y offers an available king bed. Those looking for a little extra storage will love the expansive wardrobe in the 27N, 35B, and 36Y, while the 30T and 35F offer his and her wardrobes and additional storage cabinets. The 35B also comes with twin bunk beds so you can comfortably sleep up to seven people. A dedicated 110-volt outlet is connected to a 2,000-watt inverter in the 36Y, or 1,000-watt inverter available on most models.

All bathrooms feature a textured glass shower door, laminate countertops, and an elegant skylight. The 35B and 35F feature a master bathroom complete with the BIG Shower and the mid-coach bath in the 27N and 36Y has additional storage space as well.



36Y Wardrobe



36Y Flip-Down HDTV



36Y Shower





Dash

Driving is more pleasurable than ever thanks to the comfortable, adjustable Ultraleather cab seats (Primera 26HE, 31KE) with fixed lumbar support. The Rearview Monitor System and available sideview cameras (NA 26HE, 31KE) offer greater control and peace of mind when maneuvering the coach. In addition, your co-pilot will appreciate the convenient dash workstation (NA 26HE, 31KE).



Powered Mirrors



36Y Dash Workstation



Enjoy sunny afternoons under the powered patio awning, and spend your evenings with the available exterior entertainment center, complete with an HDTV (30T, 36Y). Additional features include automatic hydraulic leveling jacks and exterior paddle latches with dual-latching points.



36Y Powered Patio Awning



36Y Exterior Entertainment Center



36Y Pass-Through Exterior Storage



Stylized Aluminum Wheels (35B, 35F, 36Y)



## Fiberglass Roof

The crowned, one-piece fiberglass roof is backed by a 10-year limited parts-and-labor roof skin warranty.

## Rubber Can't Cut It

Rubber roofs used by competitors can streak and degrade over time.

## Thermo-Panel® Sidewalls

By layering fiberglass and high-density block foam insulation with welded aluminum support structures, we create some of the industry's strongest, most durable and lightweight sidewalls.

## E-Coating

An electrodeposition coating helps protect critical steel components.

**Embedded Steel** Metal substructures embedded into the sidewall provide solid attachment points to keep cabinets and appliances mounted securely in place.

## Laser-Cut Tubing

Precision laser cutters create precision joints in structural steel that are stronger and require less welding.



## Interlocking Joints

Specially engineered interlocking joints connect the floor, sidewalls and roof where competitors often rely on simple screws to bear the weight.



**Solid Framework** Aluminum extruded in our own facility to our exacting standards creates an extremely strong and solid structural framework.

# SUPER STRUCTURE

BUILT TO LAST

Every coach—from our smallest Class C to our largest diesel-pusher model—is built to Winnebago's® legendary SuperStructure® construction standards. It's a process developed and refined over more than 50 years of building some of the strongest, most durable coaches in the industry.



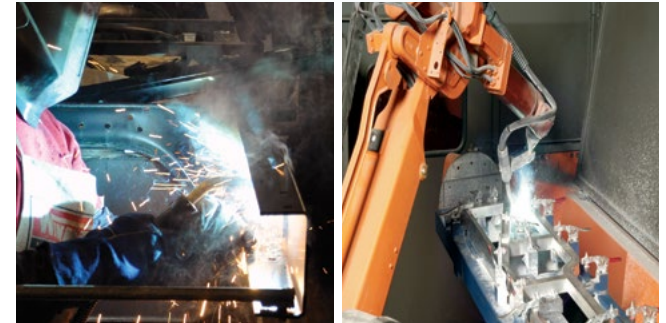
**TESTING** Before rolling out of our factories, every coach undergoes an extensive 113-point inspection. Each coach also passes a high-pressure water test that simulates rain at a rate of 50-inches per hour to check for leaks. During the design process, our computer simulations, physical testing center, and rigorous test track ensure each model is built to last.



**DETAILS** At Winnebago, we treat the features you can't see with the same care as the ones you can. Look in the access panels of some of our competitors' coaches and you'll see loose insulation and wires haphazardly strewn about. Winnebago maintains a clean fit and finish throughout so your coach will last for the long haul.



**BUILT IN-HOUSE** We extrude our own aluminum. We rotocast our own plastic components. In fact, we manufacture most of our own parts so they are designed to fit the space, rather than fitting the space to an awkward off-the-shelf component size.



**SUPER  
STRUCTURE**<sup>®</sup>  
BUILT TO LAST

 Visit [BetterBuiltRVs.com](http://BetterBuiltRVs.com) to gain real insight into what goes into a Winnebago motorhome.

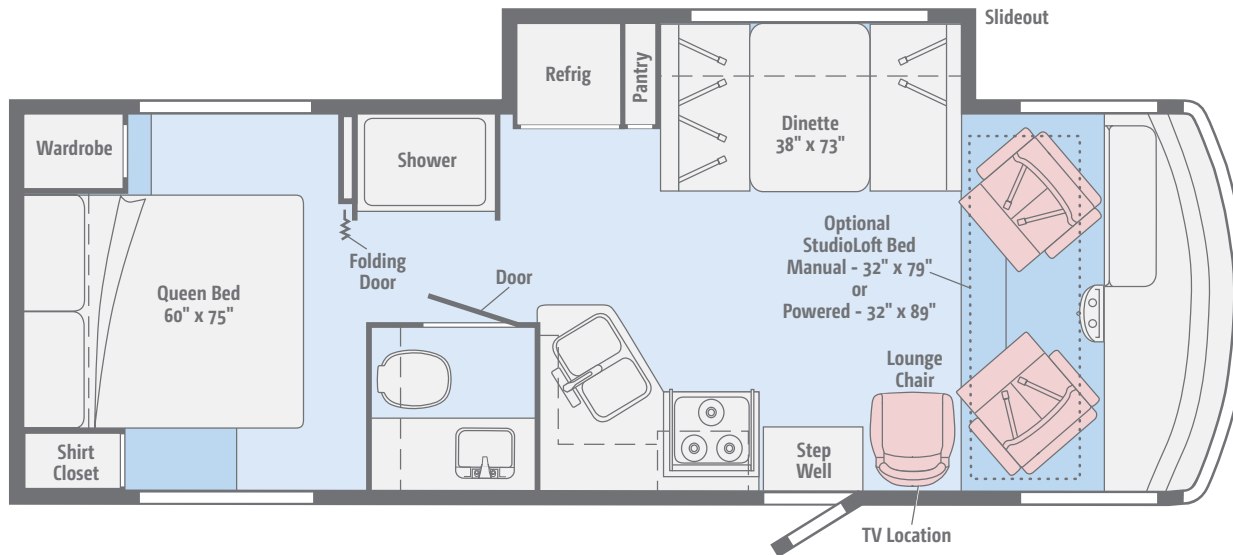
**TAKE A TOUR** We're proud of our processes, state-of-the-art facilities, and the people who make Winnebago number one. We invite you to visit our complex in Forest City, Iowa, for a firsthand look at the dedication and technology behind every motorhome we build.





## 26HE

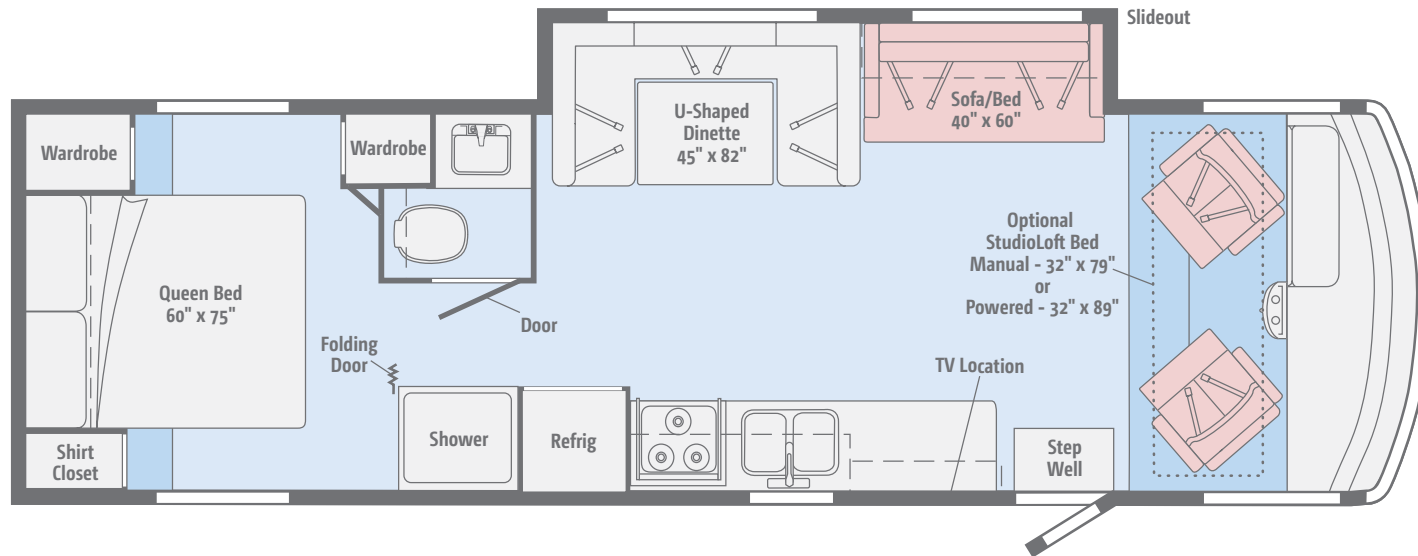
With popular features such as swivel cab seats, a complete galley, and a walk-around queen bed, this is the ideal floorplan for any RV enthusiast.





## 31KE

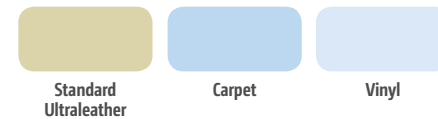
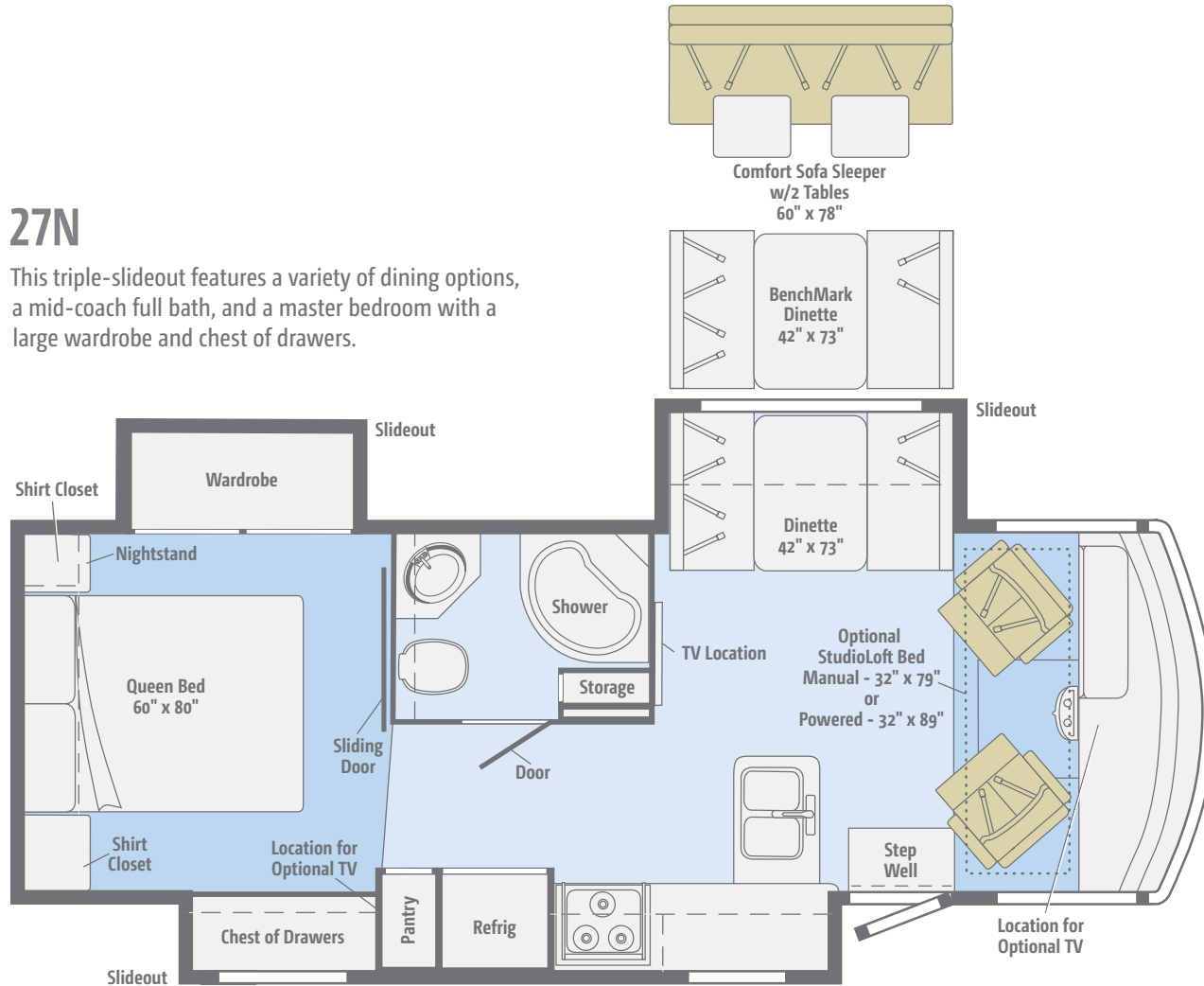
This impressive floorplan features desirable amenities such as a sofa/bed, U-shaped dinette, split bath, shirt closet and wardrobe, and a walk-around queen bed.





# 27N

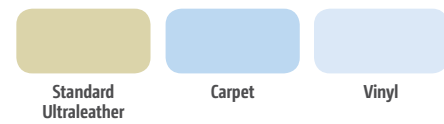
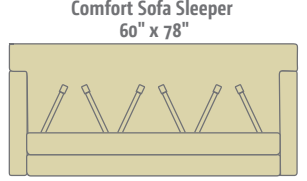
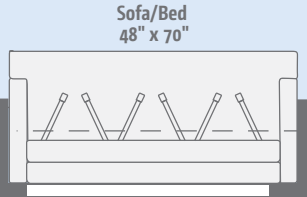
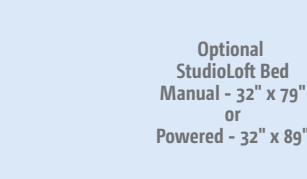
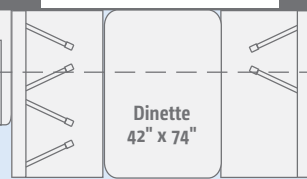
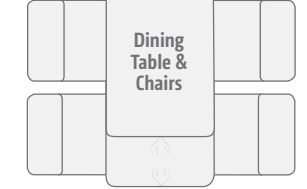
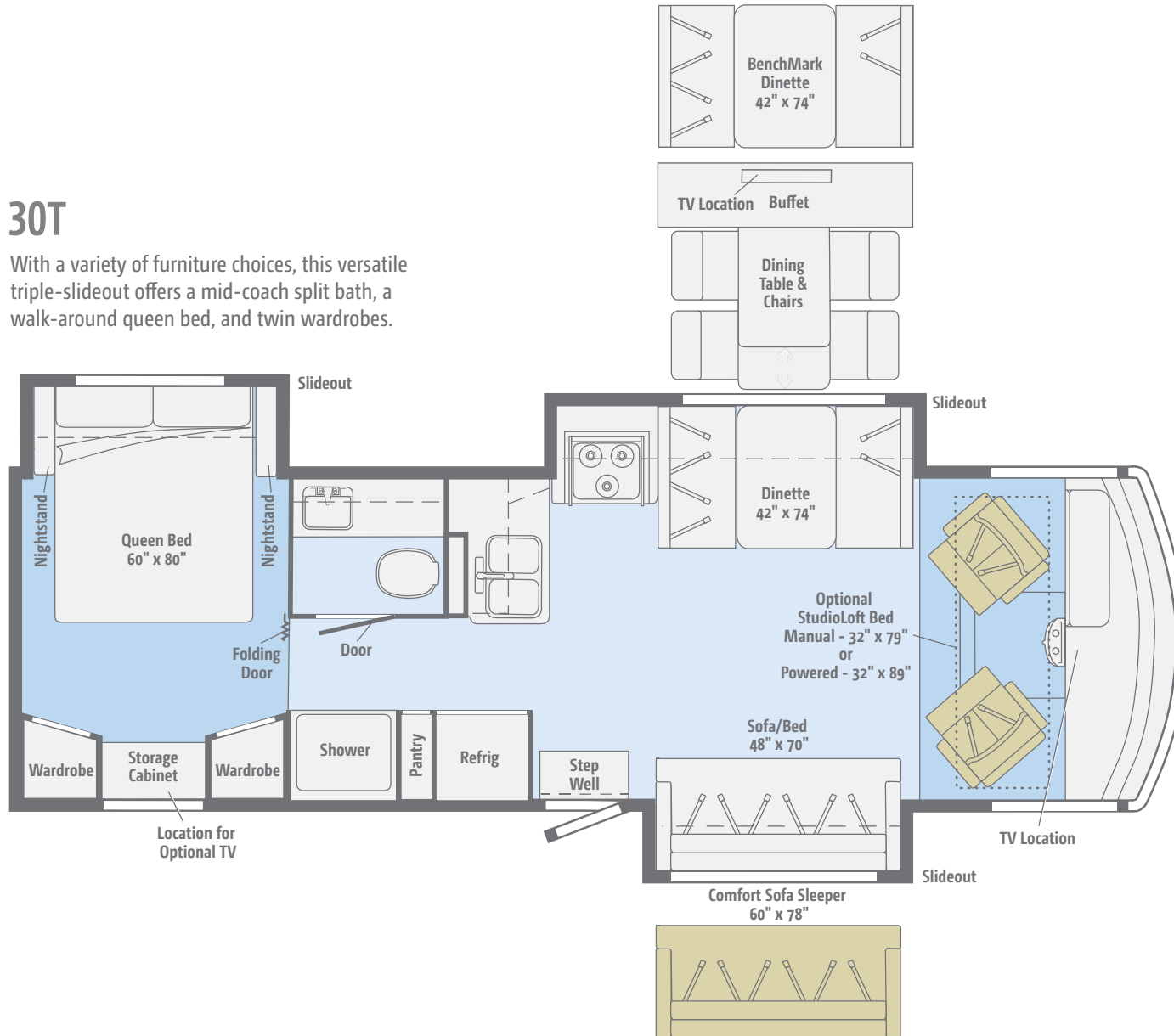
This triple-slideout features a variety of dining options, a mid-coach full bath, and a master bedroom with a large wardrobe and chest of drawers.



Dimensions shown are for sleeping space only and may vary due to styling differences. Dashed lines denote overhead storage areas. Floorplans and specifications are also available online at [GoWinnebago.com](http://GoWinnebago.com).

# 30T

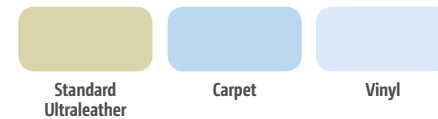
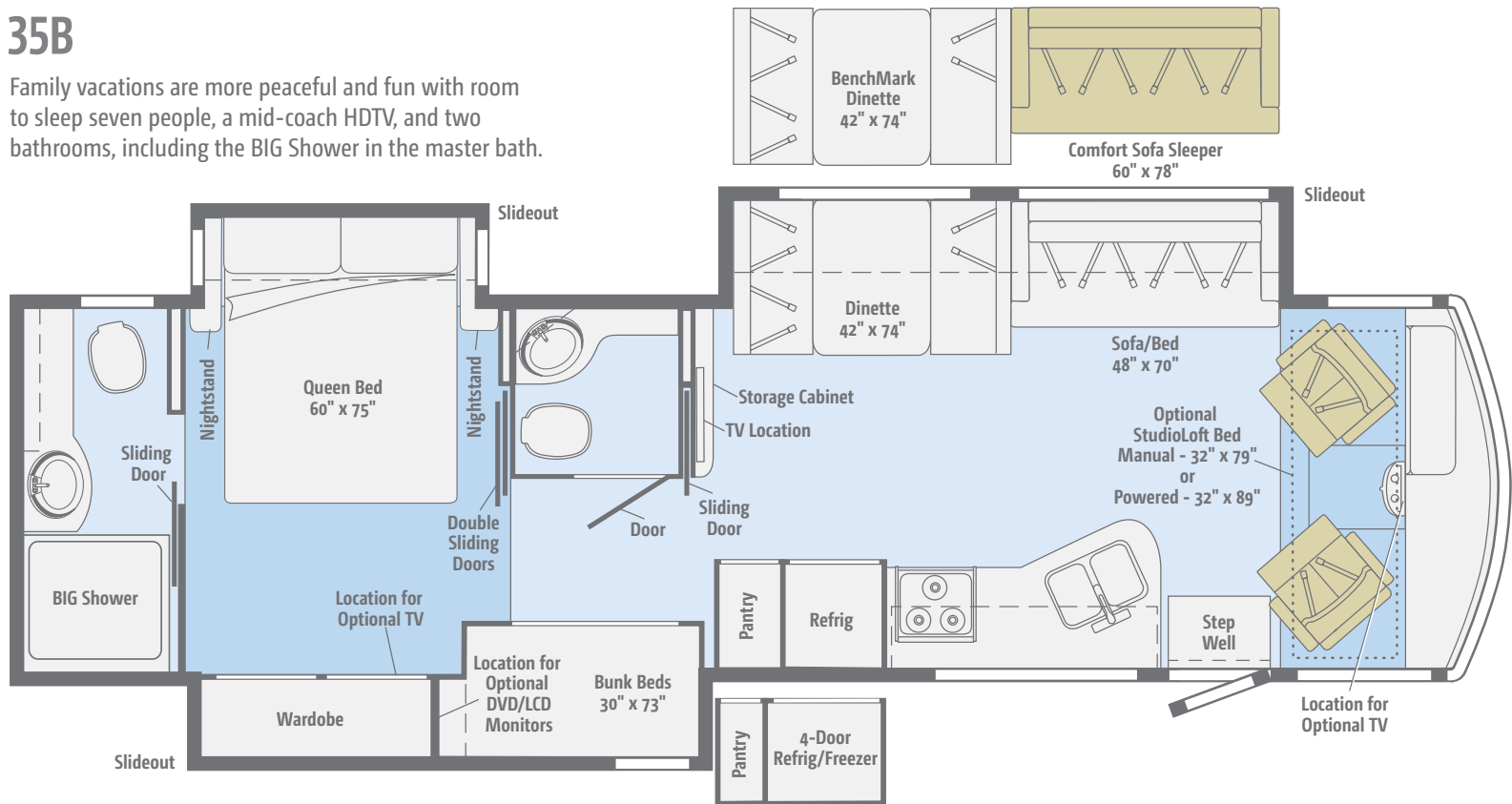
With a variety of furniture choices, this versatile triple-slideout offers a mid-coach split bath, a walk-around queen bed, and twin wardrobes.





### 35B

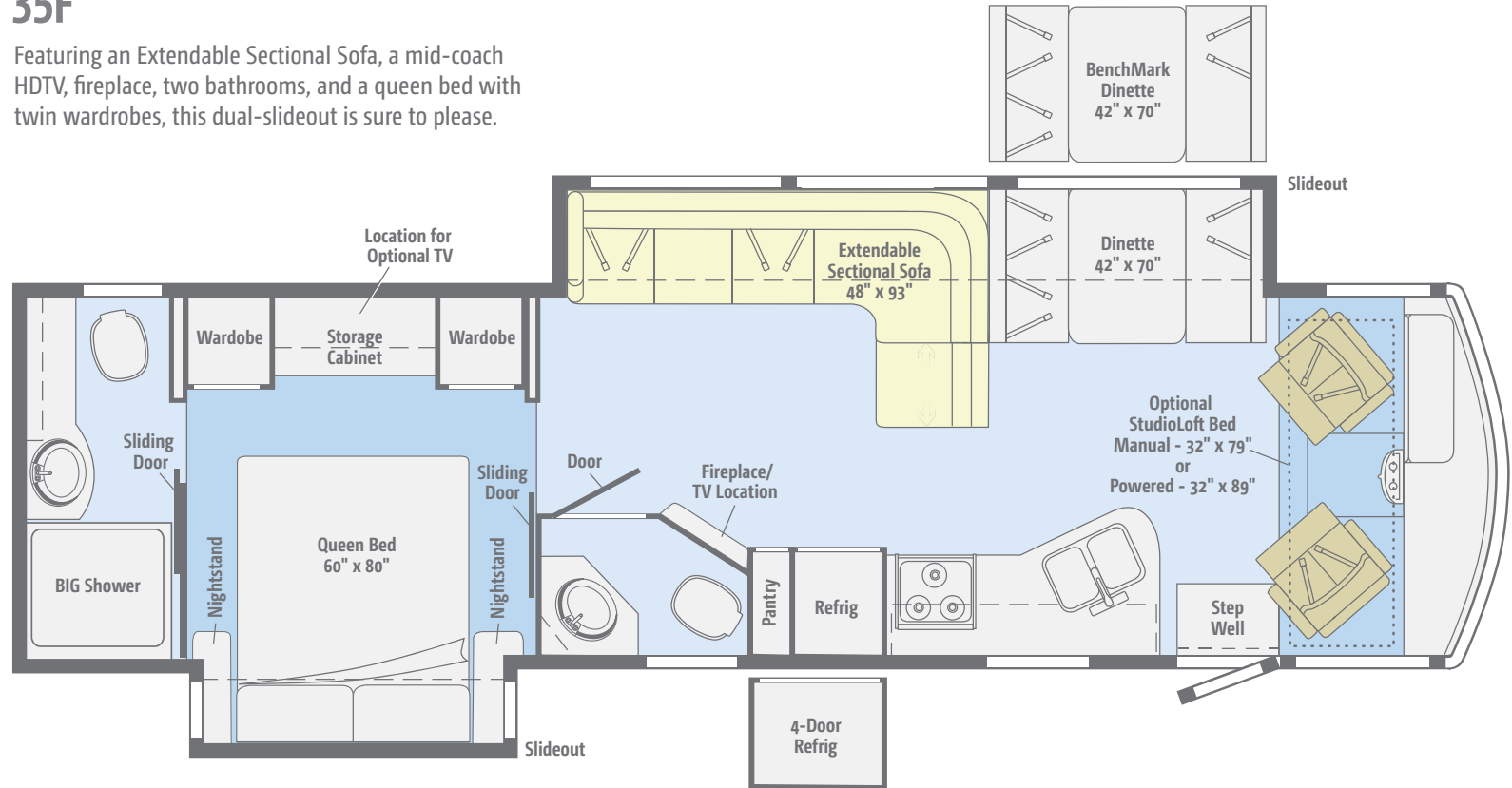
Family vacations are more peaceful and fun with room to sleep seven people, a mid-coach HDTV, and two bathrooms, including the BIG Shower in the master bath.



Dimensions shown are for sleeping space only and may vary due to styling differences. Dashed lines denote overhead storage areas. Floorplans and specifications are also available online at [GoWinnebago.com](http://GoWinnebago.com).

# 35F

Featuring an Extendable Sectional Sofa, a mid-coach HDTV, fireplace, two bathrooms, and a queen bed with twin wardrobes, this dual-slideout is sure to please.



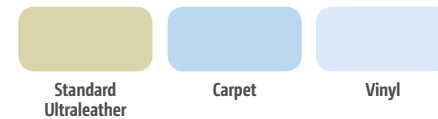
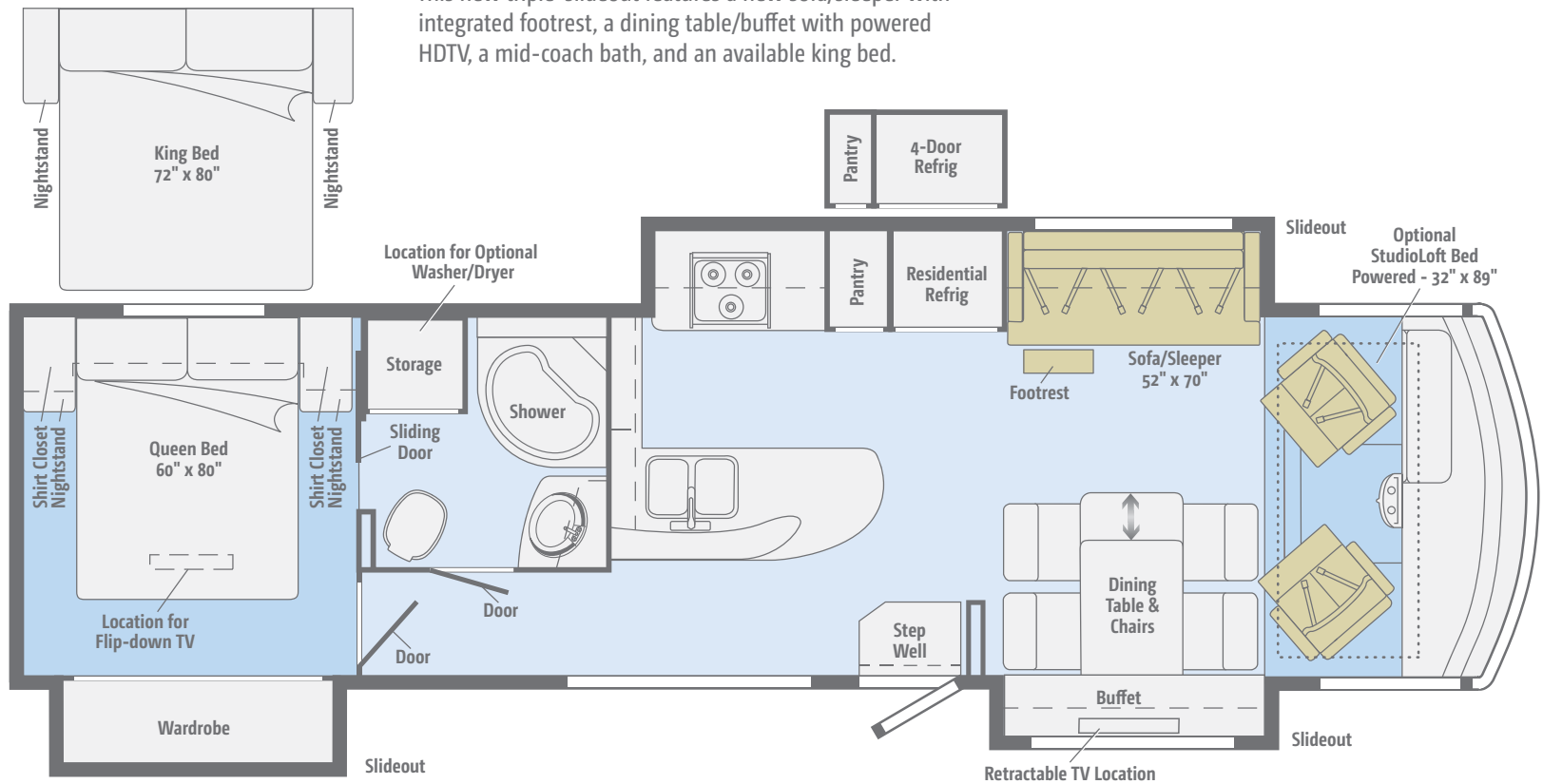
Optional Ultraleather	Carpet	Vinyl

Dimensions shown are for sleeping space only and may vary due to styling differences. Dashed lines denote overhead storage areas. Floorplans and specifications are also available online at [GoWinnebago.com](http://GoWinnebago.com).



## NEW 36Y

This new triple-slideout features a new sofa/sleeper with integrated footrest, a dining table/buffet with powered HDTV, a mid-coach bath, and an available king bed.



Dimensions shown are for sleeping space only and may vary due to styling differences. Dashed lines denote overhead storage areas. Floorplans and specifications are also available online at [GoWinnebago.com](http://GoWinnebago.com).

Choose from three fabric collections and two wood finishes.

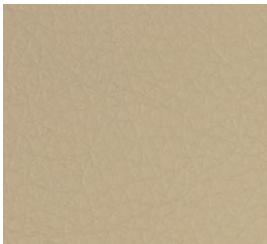
## Four Seasons



Main



Ultraleather



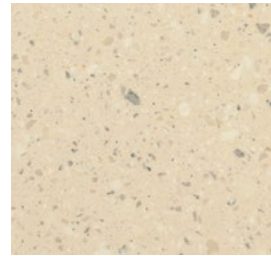
Primera  
(26HE, 31KE)



Accent



Bedspread



Corian Countertop  
(Galley)



HD Laminate Countertop  
(26HE, 31KE)



Wall Board



Carpet



Vinyl



Forest Cherry



Coffee-Glazed  
Vienna Maple  
(NA 26HE, 31KE)

*Winnebago reserves the right to change décor materials and specifications without notice or obligation.*



Choose from three fabric collections and two wood finishes.

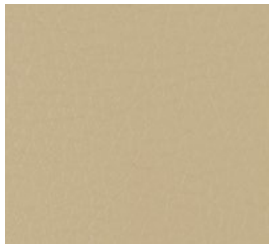
## Pecan Frost



Main



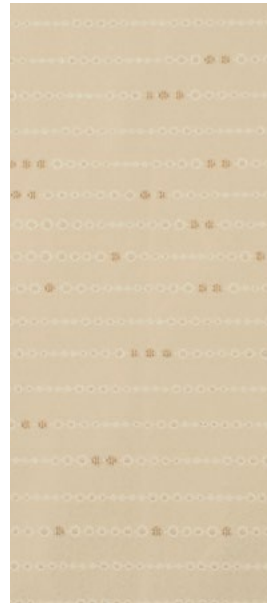
Ultraleather



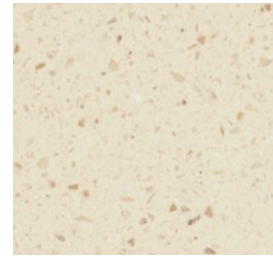
Primera  
(26HE, 31KE)



Accent



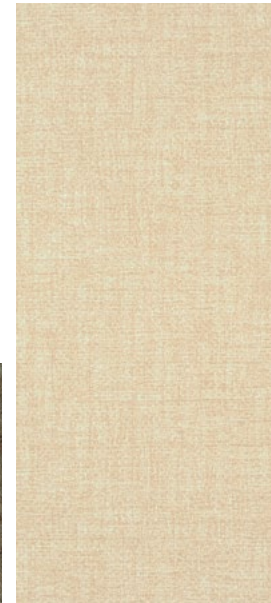
Bedspread



Corian Countertop  
(Galley)



HD Laminate Countertop  
(26HE, 31KE)



Wall Board



Carpet



Vinyl



Forest Cherry



Coffee-Glazed  
Vienna Maple  
(NA 26HE, 31KE)

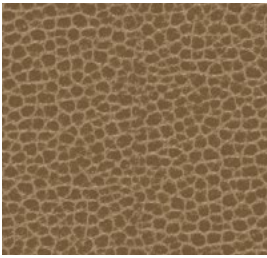
*Winnebago reserves the right to change décor materials and specifications without notice or obligation.*

Choose from three fabric collections and two wood finishes.

## Sonoma



Main



Ultraleather



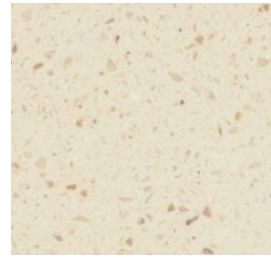
Primera  
(26HE, 31KE)



Accent



Bedspread



Corian Countertop  
(Galley)



HD Laminate Countertop  
(26HE, 31KE)



Wall Board



Carpet



Vinyl



Forest Cherry



Coffee-Glazed  
Vienna Maple  
(NA 26HE, 31KE)

*Winnebago reserves the right to change décor materials and specifications without notice or obligation.*



The Vista comes with standard graphics or available full-body paint (NA 26HE, 31KE).



**Khaki**  
(26HE, 31KE)  
STANDARD GRAPHICS



**Desert Champagne**  
(NA 26HE, 31KE)  
STANDARD GRAPHICS

The Vista comes with standard graphics or available full-body paint (NA 26HE, 31KE).



**Arctic Silver**  
(NA 26HE, 31KE)  
FULL-BODY PAINT



**Cayenne**  
(NA 26HE, 31KE)  
FULL-BODY PAINT



The Vista comes with standard graphics or available full-body paint (NA 26HE, 31KE).



**Cream**  
(NA 26HE, 31KE)  
FULL-BODY PAINT



**Sierra**  
(NA 26HE, 31KE)  
FULL-BODY PAINT

## Weights & Measures

	26HE	31KE	27N	30T	35B	35F	36Y
Length	27'1"	31'3"	28'3"	31'	36'5"	35'5"	37'
Exterior Height <sup>1</sup>	12'2"	12'2"	12'2"	12'2"	12'5"	12'5"	12'5"
Exterior Width <sup>2</sup>	8'5.5"	8'5.5"	8'5.5"	8'5.5"	8'5.5"	8'5.5"	8'5.5"
Exterior Storage <sup>3</sup> (cu. ft.)	117	168	123	118	160	154	145
Awning Length	19'	17'	19'	17'	13'	16'	19'
Interior Height	6'8"	6'8"	6'8"	6'8"	6'8"	6'8"	6'8"
Interior Width	8'0.5"	8'0.5"	8'0.5"	8'0.5"	8'0.5"	8'0.5"	8'0.5"
Freshwater Tank Capacity <sup>4</sup> (gal.)	54	64	64	78	93	74	76
Water Heater Capacity (gal.)	6	6	6	6	6	6	10
Holding Tank Capacity - Black/Gray <sup>4</sup> (gal.)	43/38	41/57	43/53	41/42	41/46 & 41/51*	41/51 & 21/NA**	48/60
LP Capacity <sup>5</sup> (gal.)	18	18	18	18	18	18	18
Fuel Capacity (gal.)	80	80	80	80	80	80	80
GCWR <sup>6</sup> (lbs.)	23,000	23,000	23,000	23,000	26,000	26,000	26,000
GVWR (lbs.)	16,000	16,000	18,000	18,000	22,000	22,000	22,000
GAWR - Front (lbs.)	6,500	6,500	7,000	7,000	8,000	8,000	8,000
GAWR - Rear (lbs.)	11,000	11,000	12,000	12,000	15,000	15,000	15,000
Wheelbase	158"	190"	178"	190"	242"	228"	242"

\*The 35B uses separate black and gray tanks for each bathroom \*\*The 35F uses separate black tanks for each bathroom

## Ford® F53 Chassis

362-hp 3-valve Triton® V10 engine SEFI, TorqShift™ 5-speed automatic transmission w/tow/haul, 175-amp. alternator

Hydraulic brakes w/ABS

Trailer Hitch<sup>6</sup> 5,000-lb. drawbar/500-lb. maximum vertical tongue weight

7-pin connector

Stainless steel wheel liners w/19.5" tires (26HE, 31KE, 27N, 30T)

Stylized aluminum wheels w/22.5" tires (35B, 35F, 36Y)

Automatic hydraulic leveling jacks

## Optional Upgrade Package

**Interior Upgrade Package** (NA 26HE, 31KE) soft vinyl ceiling, galley backsplash, flip-up countertop extension (NA 27N, 36Y), Dream Dinette™ dining table (NA 36Y), range cover, two sink covers, raised-panel refrigerator inserts, (NA 36Y w/standard refrigerator/freezer) throw pillow(s)

## Cab Conveniences

**Radio/Rearview Monitor System** w/color camera, AM/FM stereo, CD player, 1-way audio, and LCD monitor (26HE, 31KE)

**Radio/Rearview Monitor System** w/color camera, 6" touch screen, handheld remote, and iPod®/MP3 input (NA 26HE, 31KE)

**Cab seats** adjustable armrests, fixed lumbar support, and multi-adjustable slide/recline/swivel

**3-point seat belts**

**Chassis/house battery radio power switch**

**Power steering w/tilt wheel**

**Exterior power mirrors w/defrost**

**Cab wraparound curtain**

**Cruise control**

**12-volt powerpoints**

**Map light(s)**

**Sunvisors**

**Dash workstation w/USB and 12-volt powerpoint** (NA 26HE, 31KE)

## OPTIONAL EQUIPMENT

Sideview video camera system (NA 26HE, 31KE)

6-way power driver seat (NA 26HE, 31KE)

Passenger seat w/footrest (NA 26HE, 31KE)

Dual-speed defroster fans (NA 26HE, 31KE)

SiriusXM™ satellite radio receiver, remote, iPod® interface cable/connector (subscription not included) (NA 26HE, 31KE)

## Interior

**32" HDTV** (26HE, 31KE, 30T)

**39" HDTV** (35F)

**46" HDTV** (27N, 35B)

**Amplified digital TV antenna system**

**Dining table/buffet/chairs w/retractable 39" HDTV** (36Y)

**Satellite system ready** (NA 26HE, 31KE)

**MCD solar/blackout roller shades** (lounge, dinette, bedroom) (MCD blackout roller shades 26HE, 31KE)

**OnePlace® systems monitor**

**Powered ventilator fan** (lounge, non-power 26HE, 31KE)

**Powered ventilator roof vent** (27N bedroom)

**Powered roof vent** (bath)

**Tinted windows**

**Dual-pane windows** (NA 26HE, 31KE)

**LED lights** (NA 26HE, 31KE)

**Electric fireplace** (35F)

**Washer/dryer prep** (36Y)

## OPTIONAL EQUIPMENT

**StudioLoft™** (manual) (NA 36Y)

**StudioLoft** (powered w/ladder)

**Dining table/buffet/chairs w/retractable 39" HDTV** (30T)

**32" HDTV** (front) (27N, 35B)

**48" HDTV** (27N, 35B)

**40" HDTV** (35F)

**Washer and dryer** (36Y)

**Vinyl flooring throughout** (excludes cab and slideroom floor) (27N, 30T, 35B, 35F, 36Y)



## Galley

Corian® countertops (NA 26HE, 31KE)

Laminate countertops (26HE, 31KE)

2-door refrigerator/freezer (NA 36Y)

2-door refrigerator/freezer w/ice maker (36Y)

Microwave oven (26HE, 31KE, 30T)

Microwave oven w/range fan (27N, 35B, 35F, 36Y)

3-burner range w/oven (26HE, 31KE)

3-burner range top w/storage below (27N, 30T, 35B, 35F, 36Y)

Vented range hood (26HE, 31KE, 30T)

### OPTIONAL EQUIPMENT

3-burner range w/oven (27N, 30T, 35B, 35F, 36Y)

Microwave/convection oven (30T)

Microwave/convection oven w/range fan (27N, 35B, 35F, 36Y)

4-door refrigerator/freezer w/ice maker (35B, 35F, 36Y)

## Bath

Laminate countertop

Flexible showerhead

Textured glass shower door

Skylight

Toilet w/foot pedal (26HE, 31KE)

Porcelain toilet w/foot pedal and sprayer (NA 26HE, 31KE)

## Bedroom

Queen bed w/storage below

Bedsprad (26HE, 31KE)

Bedsprad, pillows and shams (27N, 30T, 35B, 35F, 36Y)

Headboard (NA 30T)

Bunk beds w/foam mattresses, mattress covers, and privacy curtains (35B)

28" HDTV (36Y)

Queen innerspring mattress (27N, 30T, 35B, 35F, 36Y)

Queen foam mattress (26HE, 31KE)

### OPTIONAL EQUIPMENT

2 DVD players w/10.1" LCD monitors and headphones (35B bunk beds)

22" HDTV w/cable wall input (27N, 30T)

28" HDTV (35B)

32" HDTV (35F)

King bed w/innerspring mattress, pillows and shams (36Y)

## Exterior

Premium high-gloss sidewall skin

Automatic entrance door steps

Powered patio awning

Front mud flaps

Porch light

LED lighted storage compartments (in select compartments)

Ladder (NA 26HE, 31KE)

### OPTIONAL EQUIPMENT

Lower front protective mask (w/full-body paint only)

Entertainment Center AM/FM stereo, CD player, remote, AC duplex, DC receptacle, removable TV table, speakers and lockable compartment (30T)

Entertainment Center 32" HDTV w/remote, AM/FM stereo w/DVD player w/remote, speakers (27N, 35B, 35F)

Entertainment Center 32" HDTV w/remote (36Y)

## Heating & Cooling System

14,800 BTU air conditioner w/ChillGrille™ (26HE, 31KE, 27N, 30T)

2 high-efficiency air conditioners w/ChillGrille and Energy Management System (35B, 35F, 36Y)

30,000 BTU low-profile furnace (26HE, 31KE, 27N, 30T)

40,000 BTU low-profile furnace (35B, 35F, 36Y)

### OPTIONAL EQUIPMENT

Air conditioner heat pump (27N, 30T)

2 high-efficiency air conditioner heat pumps (35B, 35F, 36Y)

All-Weather Upgrade Package (30T) 5,500-watt Cummins Onan® Marquis Gold™ gas generator, 2nd high efficiency A/C with heat pumps, 50-amp. power cord, automatic changeover switch, shoreline/generator

## Electrical System

AC/DC load center, 45-amp. converter/charger (26HE, 31KE, 27N, 30T)

AC/DC electrical distribution system, 45-amp. converter/charger (35B, 35F)

AC/DC electrical distribution system, 55-amp. converter/charger (36Y)

30-amp. power cord (26HE, 31KE, 27N, 30T)

50-amp. power cord, shoreline/generator automatic changeover switch (35B, 35F, 36Y)

PowerLine® Energy Management System (27N, 35B, 35F, 36Y)

4,000-watt Cummins Onan MicroQuiet gas generator (26HE, 31KE, 27N, 30T)

5,500-watt Cummins Onan Marquis Gold™ gas generator (35B, 35F, 36Y)

2 deep-cycle Group 24 batteries (NA 36Y)

4 deep-cycle Group 31 batteries (36Y)

Battery disconnect system (chassis) (NA 26HE, 31KE)

Battery disconnect system (coach)

Automatic dual-battery charge control

Auxiliary start circuit

AC Duplex receptacle

2,000-watt AC/DC inverter w/remote panel (36Y)

Cable TV input

Portable satellite dish hookup, power cord

Automatic generator start system (36Y)

### OPTIONAL EQUIPMENT

1,000-watt AC/DC inverter w/remote panel (NA 26HE, 31KE, 36Y)

## Plumbing System

Service Center colored labels, pressurized city water hookup w/diverter valve, drainage valves, exterior wash station w/lighted pump switch (NA 26HE, 31KE), 10' sewer hose

6-gallon LP water heater w/electronic ignition (26HE, 31KE)

6-gallon 110-volt/LP water heater w/motoraid (27N, 30T, 35B, 35F)

10-gallon 110-volt/LP water heater w/motoraid (36Y)

Heated holding tank compartment

Permanent-mount LP tank w/gauge

On-demand water pump

TrueLevel™ holding tank monitoring system

Winterization Package water heater bypass valve and siphon tube

LPG accessory connection (patio area) (NA 26HE, 31KE)

Gravity tank fill w/lockable door (NA 26HE, 31KE)

Holding tank flushing system (black tank only) (NA 26HE, 31KE)

## Safety

Child seat tether anchor (forward facing dinette seat) (NA 36Y)

LP, smoke, and carbon monoxide detectors

10 BC fire extinguisher

Ground fault interrupter

High-mount brake lamp

## Warranty<sup>7</sup>

12-month/15,000-mile basic limited warranty<sup>8</sup>

36-month/36,000-mile limited warranty on structure<sup>8</sup>

10-year limited parts-and-labor warranty on roof skin<sup>8</sup>

1 The height of each model is measured to the top of the tallest standard feature and is based on the curb weight of a typically equipped unit. The actual height of your vehicle may vary by several inches depending on chassis or equipment variations. Please check with your dealer for further information.

2 The floorplans feature a wide-body design – over 96" in making your purchase decision, you should be aware that some states restrict access on some or all state roads to 96" in body width. Before making your purchase decision, you should confirm the road usage laws in the states of interest to you.

3 The load capacity of your motorhome is designated by weight, not by volume, so you cannot necessarily use all available space when loading your motorhome.

4 Capacities are based on measurements prior to tank installation. Slight capacity variations can result due to installation applications.

5 Capacities shown are tank manufacturer's listed water capacity (W.C.). Actual filled LP capacity is 80% of listing due to overfilling prevention device on tank.

6 Actual towing capacity is dependent on your particular loading and towing circumstances which includes the GVWR, GAWR, and GCWR as well as adequate trailer brakes. Please refer to the Operator's Manual of your vehicle for further towing information.

7 See separate chassis warranty.

8 See your dealer for complete warranty information.

NA Not Available

Not all items available in combination. See dealer for details.

Winnebago's continuing program of product improvement makes specifications, equipment, model availability, and prices subject to change without notice. Published content reflects the most current product information at time of printing. Please consult your dealer for individual vehicle features and specifications.

# GoWinnebago.com Has All The Answers



Visit [GoWinnebago.com](http://GoWinnebago.com) on your computer, smartphone or tablet for the latest product information and updates.

# go LIFE

## Welcome to GoLife!

Visit our lifestyle blog for motorhome news, personal travelogues, and community stories.



[WINNEBAGOLIFE.COM](http://WINNEBAGOLIFE.COM)

## **PREFERRED CARE PROGRAM**

We back our motorhomes with best-in-class support both before and after the sale:

- 12-month/15,000-mile basic limited warranty
- 36-month/36,000-mile limited warranty on structure
- 10-year limited parts-and-labor warranty on roof skin
- Complimentary 24-hour roadside assistance program



**TRIPSAVER**  
FAST TRACK PARTS  
**WINNEBAGO**

- TripSaver® Fast Track Parts guarantees that in-stock warranty parts ship directly to your dealer within 24 hours
- National dealer service network



**Premium  
ROADSIDE ASSISTANCE**

For more information, visit us at [WGOService.com](http://WGOService.com)



# WIT CLUB

## Join the Club, Join the Fun

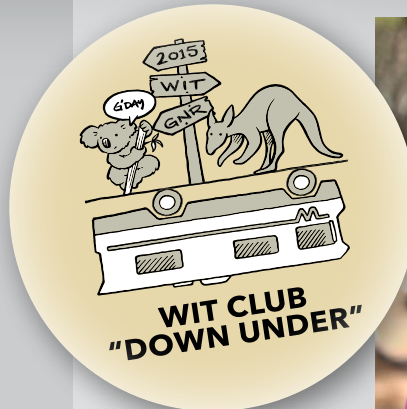
Here's the perfect way to begin your life on the road as the owner of a new Winnebago – by joining the exclusive WIT Club. Start your adventure with other fun-loving WIT Club members from across the country and get the most out of your new Winnebago motorhome.



### Members enjoy:

- Caravans and rallies
- Newsletters
- Local and state group activities
- RV travel benefits

See more at [WITclub.com](http://WITclub.com)



## Grand National Rally

G'day mates! Explore the outback at this year's "Down Under" Grand National Rally. Each year, thousands of Winnebago owners descend upon the land down under – a.k.a. Forest City, Iowa.



Rally-goers enjoy an unforgettable week reconnecting with friends, taking tours, participating in activities, and more. Hop on down and join the adventure this July!