

Jayco | White Hawk Travel Trailer

# WHITE HAWK

LIGHTWEIGHT LUXURY



**2+3**  
YEAR | YEAR  
WARRANTY



# INTERIOR DESIGN



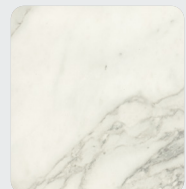
## VINTAGE WASHED GREY



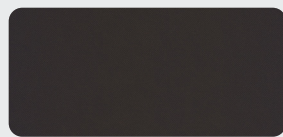
Wood



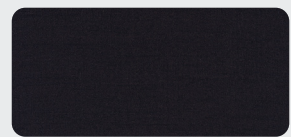
Floor



Countertop



Main Fabric



Accent Fabric

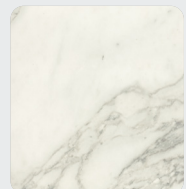
## MODERN FARMHOUSE



Wood



Floor



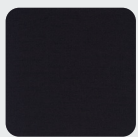
Countertop



Main Fabric



Accent Fabrics



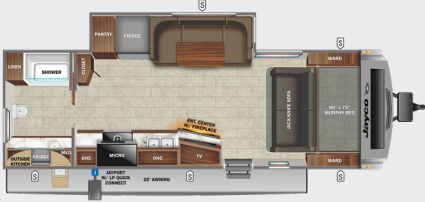




# WHITE HAWK

24MRB

OPTIONS: B, C, D, E



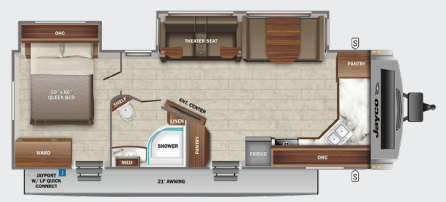
25MBH

OPTIONS: B, C, D, E



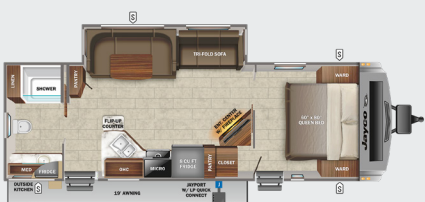
26FK

OPTIONS: D, E



27RB

OPTIONS: A, B, D, E



27RK

OPTIONS: A, B, D, E



29BH

OPTIONS: A, B, D, E



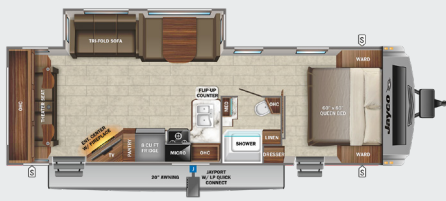
29RB

OPTIONS: B, D, E



29RL

OPTIONS: D, E



32BH

OPTIONS: A, B, D, E



32QBH

OPTIONS: A, B, D, E



32RL

OPTIONS: D, E



STORAGE



MICROWAVE



OVERHEAD CABINETS



REFRIGERATOR



WARDROBE

## OPTIONS

A



King Bed

B



Theater Seating

C



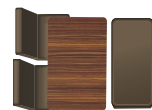
L-Lounge

D



Table & Chairs

E



Table, Chairs & Ottoman

# STANDARDS & OPTIONS

## EXTERIOR

Aerodynamic, rounded front profile with front diamond plate  
 Stronghold VBL™ vacuum-bonded, laminated side and rear walls (including slideout room walls)  
 Azdel laminated interior and exterior walls  
 Magnum Truss™ Roof System with seamless DiFlex III material  
 5/8 in. tongue-and-groove plywood decked flooring  
 American-made frame with integrated A-frame  
 G20 dark tinted safety-glass windows  
 30 in. friction-hinged main entry doors (select models)  
 Swing out grab handle  
 Exterior TV bracket with 120V and cable outlets  
 Outdoor camp kitchen with embossed metal countertops (select models)  
 Slam latches on front pass-through storage doors (select models)  
 Marine-grade exterior speakers with blue LED accent lighting (2)  
 Galvanized steel and impact-resistant wheel wells  
 30-amp service  
 Stabilizer jacks with sand pads (4)  
 Mounted camera bracket for pre-wired side and rear backup prep  
 Keyed-Alike™ lock system  
 Detachable power cord  
 A-frame mounted solar prep  
 Battery quick disconnect  
 Black tank flush  
 ABS propane bottle cover  
 Automotive-style aluminum rims  
 Spare tire with cover  
 Inverter pre-wire  
 JayPort system with outside griddle (griddle optional on 26FK, 29RL & 32RL)

## INTERIOR

Arched interior ceiling up to 81" interior height  
 LED lighting throughout  
 Electric fireplace  
 Directional and closeable central A/C vents  
 Plywood dinette, bunk and bed bases (applicable models)

Residential vinyl flooring with cold crack resistance  
 High output auto-ignition 35,000 BTU furnace with wall thermostat  
 Front windshield with roller shade with radiant barrier backer  
 Solid hardwood, joined cabinets with screwed and glued cabinet stiles  
 Deep, split bowl, stainless steel sink with high-rise, pull-out faucet and dry rack/sink cover combo  
 Decorative backsplash  
 Ball-bearing drawer guides with 75 lb. capacity  
 Wood panel fridge inserts  
 60 in. x 80 in. queen bed (60 in. x 75 in. in Murphy bed models)  
 Murphy bed design allowing pass-through exterior storage access (24MRB & 25MBH)  
 Fixed bunks with 120V outlet, 12V USB and cargo net (bunk models only)  
 Jayco exclusive Teddy Bear "soft-touch" bunk mats (bunk models only)  
 14 in. x 14 in. powered roof vents in bathroom and main bedroom  
 360° Siphon® roof vent cap

## CUSTOMER VALUE PACKAGE (MANDATORY)

American-made nitro-filled Goodyear® radial tires with self-adjusting brakes (made in the USA)  
 6 gal. gas/electric DSI water heater  
 55 gal. fresh water tank  
 30 lb. propane bottles (2)  
 Outside shower  
 Power awning with LED light  
 Power tongue jack  
 Slide topper prep  
 40" or 50" LED TV  
 14,500 BTU A/C  
 AM/FM/Bluetooth® stereo with speakers  
 8 cu. ft. gas/electric refrigerator with stainless front panels  
 Oven with 3-burner recessed cooktop with glass cover  
 Microwave  
 Porcelain foot flush toilet  
 Showers with solid enclosures  
 Bathroom skylight

## ELITE PACKAGE (MANDATORY)

Climate Shield™ zero-degree tested weather protection:  
 - Fully enclosed and heated underbelly (ducted)  
 - 35,000 BTU output furnace  
 - Double layer fiberglass batt insulation in ceiling and floor  
 - Double sided radiant barrier insulation (roof, floor, cap, and slide room floors)  
 - PEX plumbing  
 Front molded fiberglass cap with automotive-style windshield and blue LED accent lighting  
 Frameless windows  
 Fold-down aluminum tread entry steps (main entry), aluminum tread entry steps (second entry, select models)  
 JaySMART™ (Safety Markers And Reverse Travel) LED lighting (patent-pending)  
 Roof-mount solar prep  
 Kitchen skylight with shade  
 Power roof vent (main living area)  
 JAYCOMMAND® "Smart RV" system with TPMS (Tire Pressure Monitoring System)

## OPTIONS

2nd 14,500 BTU A/C (requires 50-amp service)  
 50-amp service with 2nd A/C prep (required with 2nd A/C)  
 Power stabilizer jacks  
 120V heated tank pads  
 Theater seating (select models)  
 Free-standing table with 4 chairs in place of booth dinette (select models)  
 Free-standing table with 2 chairs and ottoman in place of dinette (select models)  
 10 cu. ft. 12V refrigerator  
 King bed in place of queen bed (select models)  
 Solar Power Package with 190W roof-mounted solar panel  
 L-lounger sofa ILO dinette (select models)  
 Outside griddle for JayPort system (26FK, 29RL & 32RL)

\*Indicates split tanks

FLOORPLAN	EXTERIOR TRAVEL LENGTH	EXTERIOR WIDTH	EXTERIOR HEIGHT (WITH A/C)	INTERIOR HEIGHT	UNLOADED VEHICLE WEIGHT	DRY HITCH WEIGHT	GVWR	CARGO CARRYING CAPACITY	FRESH WATER CAPACITY (INCLUDING WATER HEATER)	GRAY WASTE WATER CAPACITY	BLACK WASTE WATER CAPACITY	SLEEPING CAPACITY
24MRB	TBD	TBD	TBD	TBD	TBD	TBD	TBD	TBD	TBD	TBD	TBD	3-4
25MBH	TBD	TBD	TBD	TBD	TBD	TBD	TBD	TBD	TBD	TBD	TBD	6-8
26FK	TBD	TBD	TBD	TBD	TBD	TBD	TBD	TBD	TBD	TBD	TBD	3-4
27RB	32' 10"	8' 0"	11' 3"	6' 9"	6,765	815	8,200	1,435	61	61*	30.5	4-6
27RK	TBD	TBD	TBD	TBD	TBD	TBD	TBD	TBD	TBD	TBD	TBD	4-6
29BH	34' 9"	8' 0"	11' 3"	6' 9"	7,025	795	8,500	1,475	61	61*	30.5	8-10
29RB	TBD	TBD	TBD	TBD	TBD	TBD	TBD	TBD	TBD	TBD	TBD	4-6
29RL	TBD	TBD	TBD	TBD	TBD	TBD	TBD	TBD	TBD	TBD	TBD	4-6
32BH	38' 0"	8' 0"	11' 4"	6' 6"	8,145	1,125	9,995	1,850	61	61*	61*	8-9
32QBH	TBD	TBD	TBD	TBD	TBD	TBD	TBD	TBD	TBD	TBD	TBD	9-11
32RL	36' 10"	8' 0"	11' 4"	6' 9"	7,900	910	9,500	1,500	61	72.5*	30.5	4-6

Meet your Jayco Dealer



Scan QR code for specification definitions

Some specs at the time of print may include estimates. For the most updated information, please visit [Jayco.com/white-hawk](http://Jayco.com/white-hawk)

Jayco, Inc. | P.O. Box 460 | Middlebury, IN 46540

See dealer for further information and prices. All information in this brochure and on [www.jayco.com](http://www.jayco.com) is the latest available at the time of publication approval. Jayco reserves the right to make changes and to discontinue models without notice or obligation. Photography may show optional equipment or props used for decoration purposes only. RVs built for sale in Canada may differ to conform to Canadian codes. JAYCO and the JAYCO BIRD IN FLIGHT are registered trademarks of Jayco, Inc. Printed in USA 10/21 ©2021 Jayco, Inc. 257087



Jayco - Part of the Jayco Family of Companies