

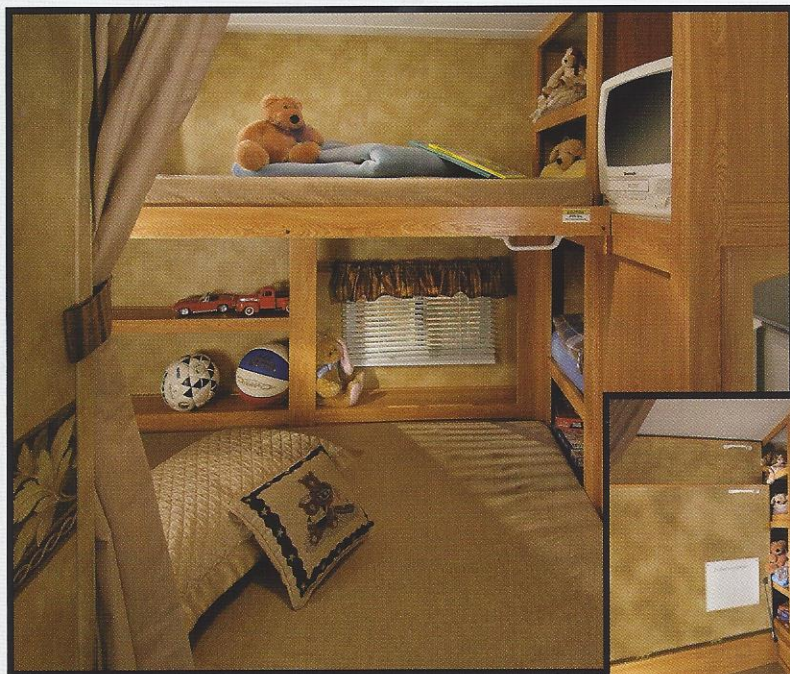
2006

Hornet

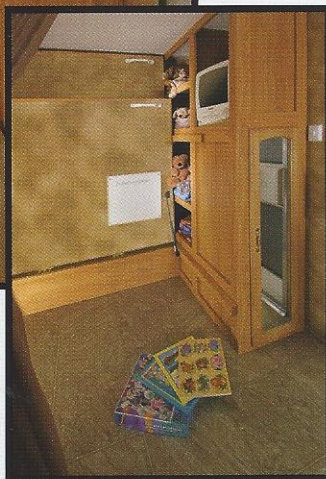
by Keystone



Travel Trailers & Fifth Wheels



Hornet's 30BHS adds even more versatility with flip-down bunk beds. When flipped up, these remarkably comfortable beds add an additional 180 cubic feet of living space.



Hornet's model 30FKS features a deep double-bowl sink, high-rise faucet and oversize countertop. All cabinetry is securely assembled with screws featuring raised panel upper cabinet doors and solid wood drawer fronts.

Imagine a vacation with less preparation: less packing, less planning and less calling ahead for reservations. Now imagine yourself

in a stylish retreat that includes all the comforts of home. With a wide range of floor plans and features that are seen on more expensive trailers, Hornet gives you a high-end look without the high-end price. Get style. Get value. Get going!



Model 30BHS features extra storage areas which are carefully designed to not impede precious floor space.

2006 Hornet Travel Trailers and Fifth Wheels: Standard Features and Options

Interior:

Raised oak cabinet doors (uppers)
Oak framed cabinet doors (tongue and groove)
Lumbercore cabinet stiles (screwed together)
Oak drawer fronts
AM/FM/CD Stereo with 4 speakers (True Sound DVD: mandatory option)
Mini blinds
Decorative light at dinette and pin up light
Clock
Swivel Rocker (27RLS, 29RLS, 31FLS, 30FKS, 33FKDS, 33FLDS)
Second swivel rocker (27RLS & 29RLS)
Wallpaper border
Extra large double bowl kitchen sink
High rise kitchen faucet
Sink cover
3 burner range with oven
Microwave
6 cubic ft. fridge with temperature control
Countertop extension (where available)
Knife rack
Silverware tray
Storage door at dinette (1) – booth dinette only
Bar stools (31FLS & 33FLDS)
Bedsprad with pillows
Bed lifters
High density foam mattress
Foot flush porcelain toilet

Tub surround
13.5 BTU Roof A/C (models 21RSL, 24RSL, 25FL, optional 19FL)
13.5 BTU Ducted A/C with "Quick Cool" (models 27' and larger)
6 Gallon gas/electric water heater w/ DSI
TV antenna & cable hookup

Exterior:

.024 gauge mesa metal exterior
Tinted safety glass
Diamond plate front rock guard
Stabilizer jacks (optional 19FL)
Dual 30-lb. LP bottles with cover and auto change
Ultra lube axles
Awning (optional 19FL)
Hitch light
Enclosed and heated fresh water tank
EZ glider entry step
White radius clamping windows
Rubber roof
Drip rails and downspouts
Pass-thru storage (most models)
Electric slide mechanism(s) (single slide models and 27FLDS / 28BHDS)
Hydraulic slide mechanisms (33FLDS, 33FKDS, 32BHDS)

Optional Equipment:

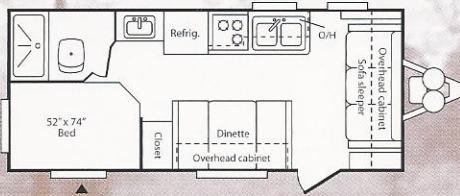
15,000 BTU A/C with "Quick Cool" in place of 13.5 BTU A/C (models 27'

and above)
True Sound Entertainment System with DVD (Mandatory option - all models)
Patio door with vertical blind (30FKS, 31FLS, 33FLDS, 33FKDS, 36BHS)
Quad bunk, front bedroom (36BHS only)
Residential refrigerator (36BHS only)
8 cu ft. fridge (33FLDS, 33FKDS, 36BHS only)
Free standing table and chairs (N/A 21RSL, 24RSL, 27B, 29FBS)
Hide-A-Bed sofa (N/A 21RSL, 24RSL, 27B, 29FBS)
Garden shower (27FLDS, 29RLS, 30FKS, 31FLS, 32BHDS, 33FKDS, 33FLDS)
Spare tire carrier and cover
Exterior shower
Rear ladder (N/A 21RSL, 24RSL, 28BHDS)
Camping Plus Package includes 13.5 BTU Roof A/C, Awning, Stabilizer Jacks (19FL only)
Carbon monoxide detector (Mandatory)
RVIA
CSA

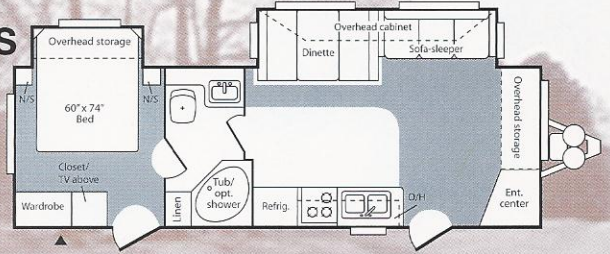
Hornet

by Keystone

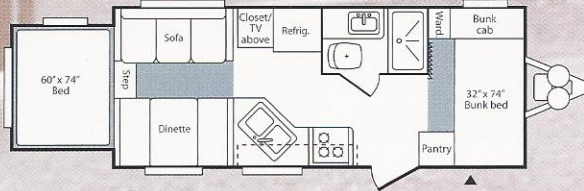
19FL



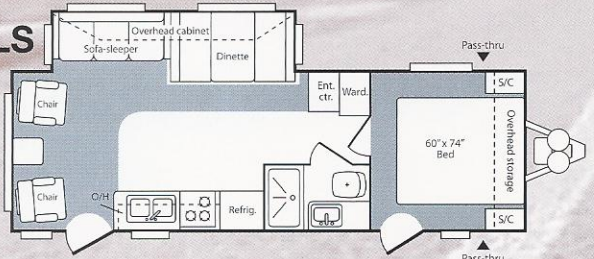
27FLDS



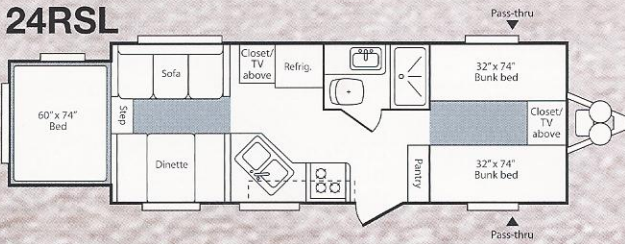
21RSL



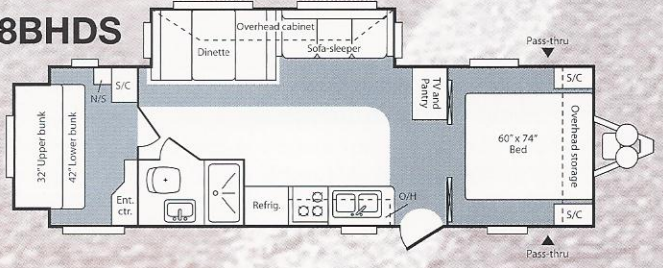
27RLS



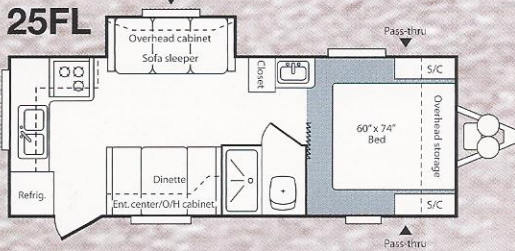
24RSL



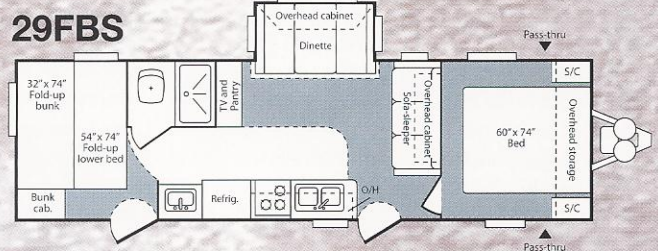
28BHDS



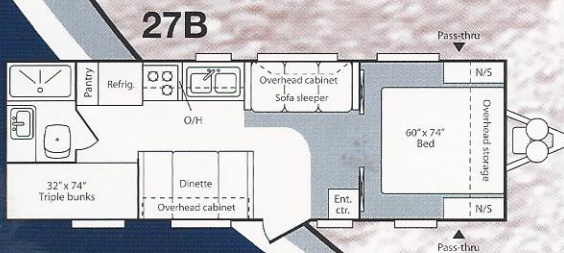
25FL



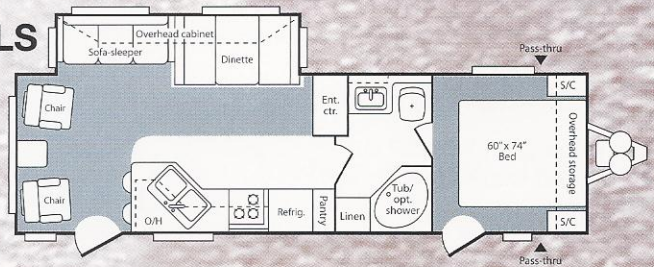
29FBS

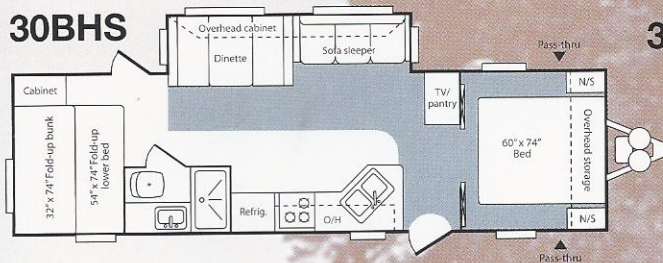
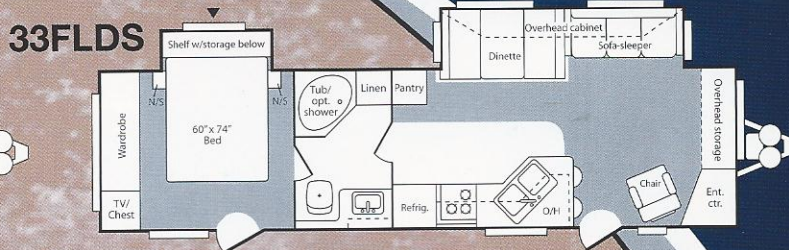
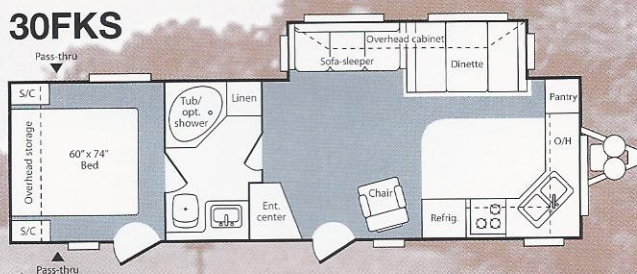
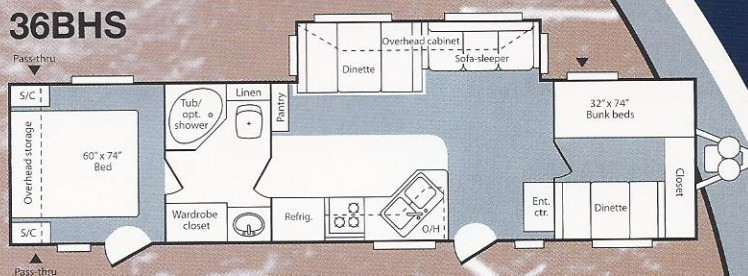
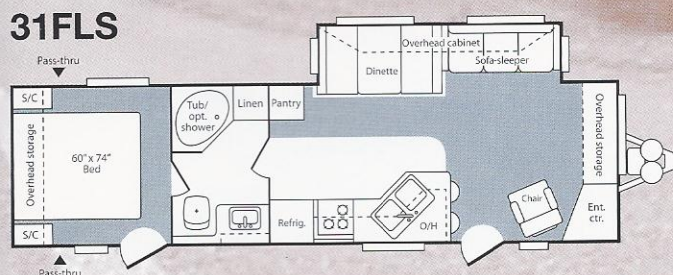
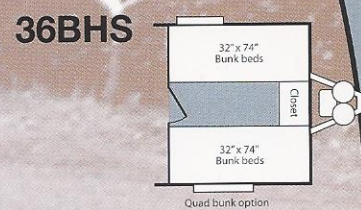
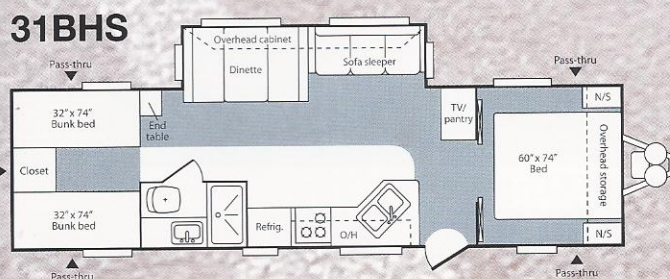
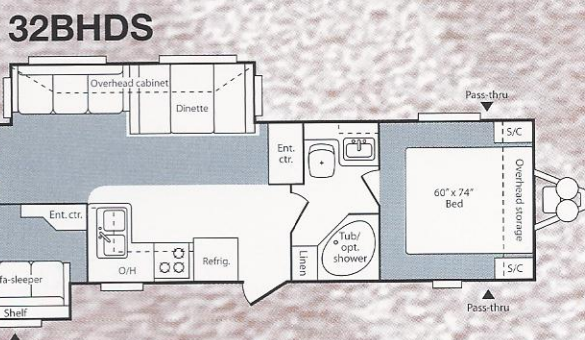
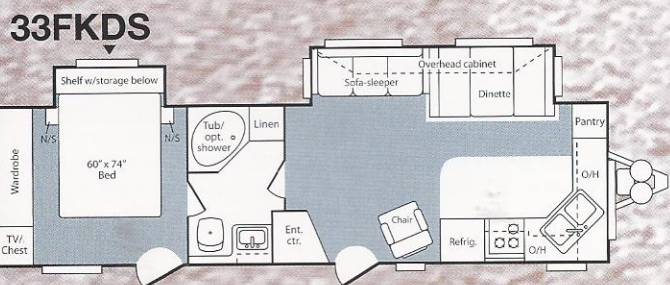
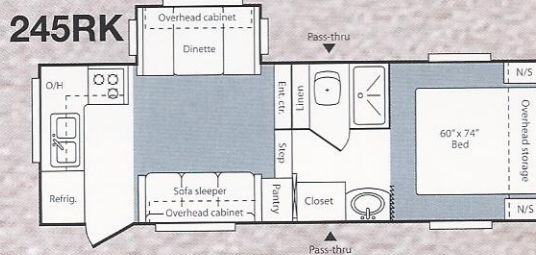
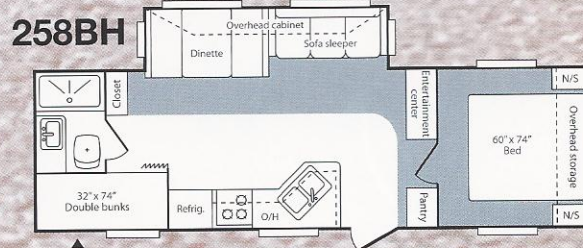
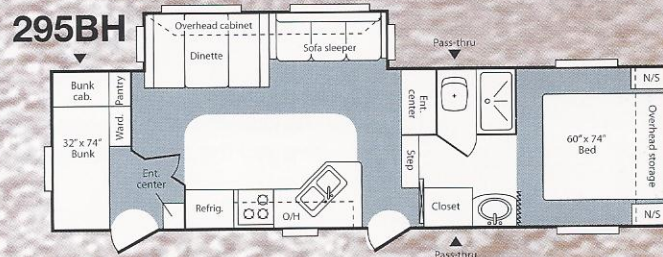


27B

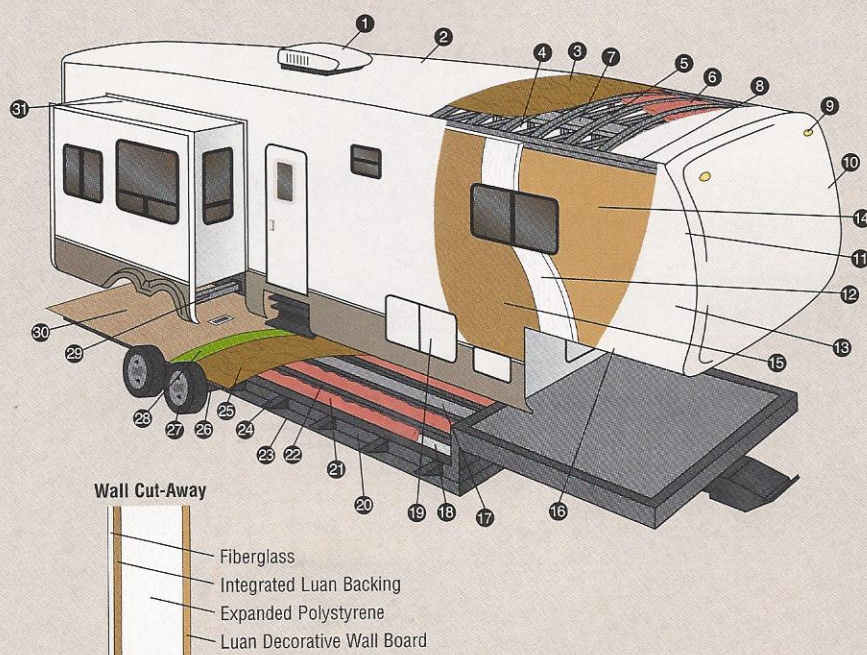


29RLS



30BHS**33FLDS****30FKS****36BHS****31FLS****36BHS****31BHS****32BHDS****33FKDS****KEY: ▲ Outside Storage****Fifth Wheels****245RK****258BH****295BH**

	2003-F	2101QS-F	2205QS-F	2303P-F	2405PQS-F	2505QSS-F	2605P-F	2802P-F	2803P-F	2809PQS-F	2901P-F	2251P-F	2352P-F	2353P-F	2453P-F
UVW (Unloaded Vehicle Wt.)	3500	4100	4160	4670	5300	5380	5080	5350	5260	5540	5570	5600	5530	5460	6090
Dry Hitch Wt.	380	500	410	490	480	620	490	570	860	560	730	880	900	1100	1400
Dry Axle Wt.	3120	3600	3750	4180	4820	4760	4590	4780	4400	4980	4840	4720	4630	4360	4690
NCC (Net Carrier Capacity)	2500	1900	1840	2330	1700	1620	1920	1650	1740	1460	1430	1400	1470	1540	1910
GVWR	6000	6000	6000	7000	7000	7000	7000	7000	7000	7000	7000	7000	7000	7000	8000
Interior Height	78"	78"	78"	78"	78"	78"	78"	78"	78"	78"	78"	82"	82"	82"	82"
Exterior Height (w/ A/C)	121"	121"	121"	121"	121"	121"	121"	121"	121"	121"	121"	132"	132"	132"	132"
Exterior Width	96"	96"	96"	96"	96"	96"	96"	96"	96"	96"	96"	96"	96"	96"	96"
Exterior Length	21'6"	22'4"	23'	25'2"	25'5"	26'3"	27'4"	29'	29'	28'7"	30'11"	24'3"	24'9"	25'1"	26'10"
Refrigerator	6	6	6	6	6	6	6	6	6	6	6	6	6	6	6
Water Heater Cap. (gal.)	6	6	6	6	6	6	6	6	6	6	6	6	6	6	6
Fresh Water Cap. (gal.)	40	40	40	40	40	40	40	40	40	40	40	40	40	40	40
Waste Water Cap. (gal.)	32	32	32	32	32	32	32	32	32	32	32	32	32	32	32
Gray Water Cap. (gal.)	32	32	32	32	32	32	32	32	32	32	32	32	32	32	32
LPG Gas Cap. (gal.)	30	30	30	30	30	30	30	30	30	30	30	30	30	30	30
Furnace BTU's (1000's)	16	20	20	20	20	20	20	25	25	25	25	20	20	20	25
Tire Size	14"	14"	14"	14"	14"	14"	14"	14"	14"	14"	14"	15"	15"	15"	15"
Awning Size	14'	14'	16'	17'	17'	16'	19'	17'	20'	19'	16'	14'	15'	17'	14'



- 1 13,500 BTU A/C
- 2 One-Piece Seamless Rubber Roof
- 3 3/8" Decking
- 4 Vinyl Interior Ceiling Panel
- 5 4 1/2" Aluminum Truss Rafters, 16" O.C.
- 6 R-7 Batten Insulation
- 7 Insulated Ductwork
- 8 Heavy Duty Aluminum Headers
- 9 Exterior Clearance and Brake Lights
- 10 One-Piece Fiberglass Front Cap
- 11 Aluminum Frame Front and End Walls
- 12 Expanded Polystyrene
- 13 Fiberglass Exterior with Integrated Luan Backing
- 14 1/8" Luan Decorative Wall Board
- 15 1/8" Luan Wall Board
- 16 3" Aluminum Stringer
- 17 Residential Style Ducted Heat Run in Floor
- 18 Darco® Moisture Barrier
- 19 Large Capacity Pass-Thru Exterior Storage with Radius Doors Front and Side for Easy Access
- 20 Heavy Duty Tube Frame Construction
- 21 R-7 Batten Insulation
- 22 2x3 Double Welded Aluminum Floor Joists, 16" O.C.
- 23 Heated & Enclosed Underbelly
- 24 Fully Welded Outriggers
- 25 5/8" Tongue and Groove Plywood
- 26 Heavy Duty Leaf Springs
- 27 Heavy Duty Steel Wheels with Trim Rings and Center Caps
- 28 Residential Style Carpet Pad
- 29 Rack and Pinion Electric Slide with Manual Override with 2x3 Box Tube Slide Out Ram
- 30 28 oz. Residential Carpet or Linoleum
- 31 Triple Sealed Slide Outs

2X2 WARRANTY – The K-Z 2x2 Warranty is a manufacturer's warranty. Each K-Z product is warranted to the original purchaser for twenty-four (24) months from the original date of purchase. Coverage includes appliances, components, construction and FULL structure. Our warranty is also transferable within the first two (2) years for a small processing fee. For a copy of the warranty with full terms and conditions, ask your local K-Z Dealer or visit our web site at <http://www.kz-rv.com>.

VEHICLE LOADING – Every effort has been made to provide the greatest number of options for the recreational owner. Each owner is responsible to select loads allowing the recreational vehicle to remain within the manufacturer's specified chassis weight limits. Do not overload the recreational vehicle.

UNLOADED VEHICLE WEIGHT (UVW) – The typical weight of this trailer as built at the factory. The UVW does not include cargo, LP gas, fresh water, options or dealer-installed accessories.

GROSS VEHICLE WEIGHT RATING (GVWR) – The maximum permissible weight of the trailer, including the UVW plus passengers, all cargo, personal items, fluids, options and dealer-installed accessories. The GVWR is equal to or greater than the sum of the UVW and the NCC.

NET CARRYING CAPACITY (NCC) – The maximum weight of all passengers, personal items, fresh water, food, tools, LP gas, other cargo and dealer-installed accessories* that can be carried by the trailer. NCC is equal to or less than GVWR minus UVW.

* The addition of options will decrease the NCC.

It is important for your safety and enjoyment that your tow vehicle be adequately sized and equipped to tow and handle the GVWR of the RV you select. Review weights and rating of your tow vehicle and consult a competent advisor for questions or advice. Whether you are new to RVing or a seasoned veteran, get a feel for the performance of your tow vehicle and the RV together before heading out on the roadways. When you tow an RV, you must drive differently than you do when driving a single vehicle. Practice hooking up, driving, backing up and braking in a safe environment or seek out professional instruction.

See specification chart above. K-Z affixes a weight label to each new RV which lists weight information for that vehicle.

NOTE: This information is intended as a guide only. Weights of individual vehicles are approximate. Consult your Owner's Manual for complete loading, weighing and towing instructions. All weights may vary.

Awarded to K-Z
Six Years in a Row!



Dealer

Jerry's Trailers & Campers, Inc.
2601 South 13th St.
Norfolk, NE 68701
(402) 371-1306
www.jerrystrailers.com



FRONTIER™



K-Z • 9270 West U.S. 20 • Shipshewana, IN 46565
E-Mail kz@kz-rv.com • www.kz-rv.com

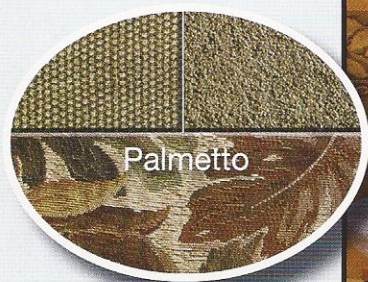


Due to continual research and advances, manufacturer reserves the right to change specifications, design, price and equipment without notice, and assumes no responsibility for any error in this literature. Some items shown are not included as standard or optional equipment.
©2006 K-Z

11/15/05 75M



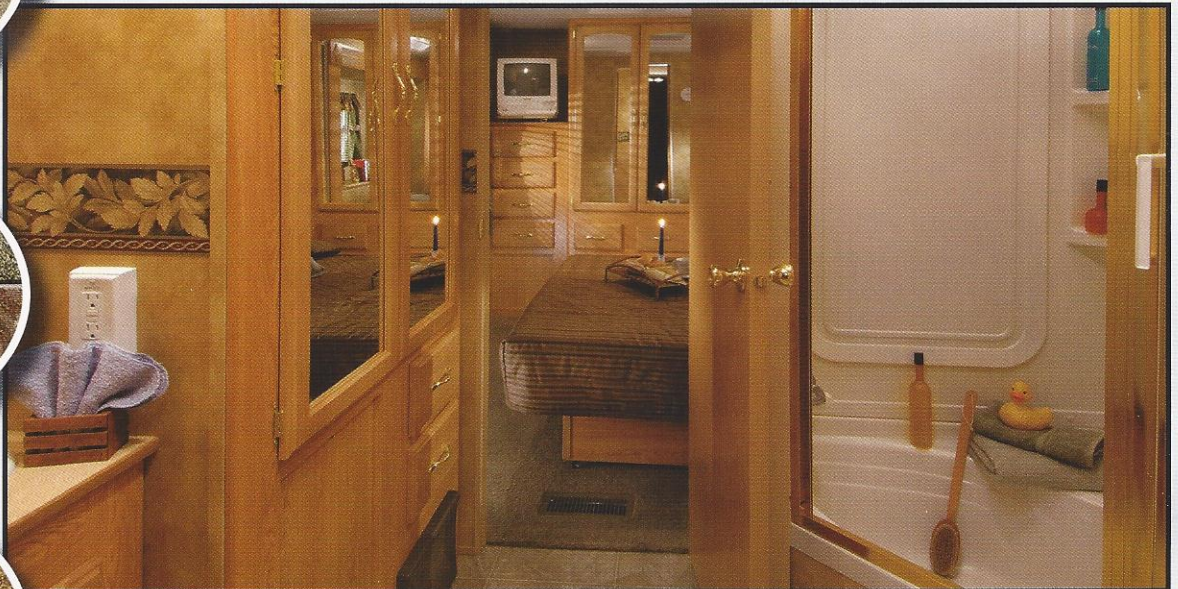
Irish Rose



Palmetto



Mediterranean



All Hornet Retreat models feature a full-wall wardrobe in the bedroom (above) as well as a bed slide to give you the spacious feel of home. The large bathroom offers additional closet space as well as a large garden tub (shown) or optional shower.

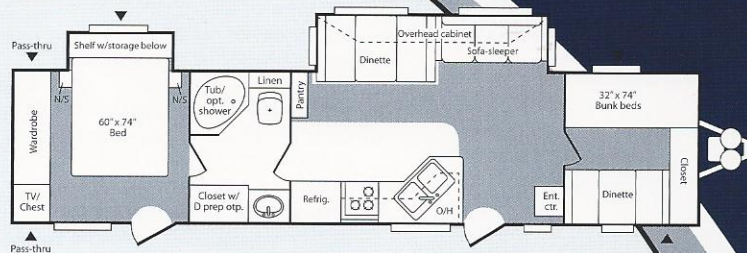
Hornet

by Keystone

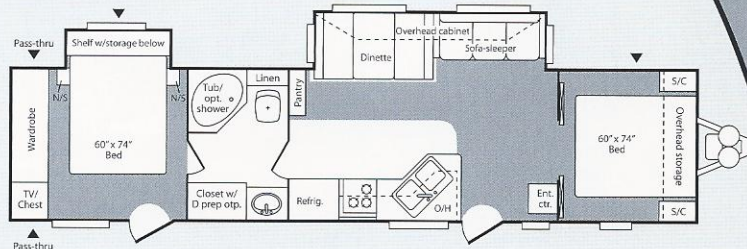
Retreat

You look forward to the many conveniences and comforts an RV provides; it's the ultimate freedom vehicle! So whether you choose to travel on the weekend or park at a permanent campsite, the Retreat's residential features and special towable design allow for maximum flexibility.

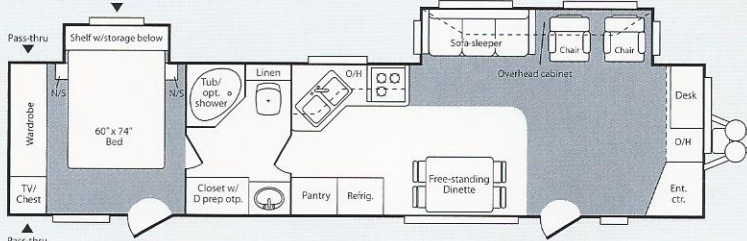
38BHDS



38DQDS



38FLDS



2006 Hornet Retreat: Standard Features and Options

Interior:

- Raised oak cabinet doors (uppers)
- Oak framed cabinet doors (tongue and groove)
- Lumbercore cabinet stiles (screwed together)
- Oak drawer fronts
- AM/FM/CD Stereo with 4 speakers (True Sound DVD: mandatory option)
- Mini blinds
- Decorative light at dinette and pin up light
- Clock
- 2 Swivel rockers (38FLDS only)
- Wallpaper border
- Extra large double bowl kitchen sink
- High rise kitchen faucet
- Water purifier
- Sink cover
- 3 burner range with oven
- Microwave
- 8 cubic ft. fridge with temperature control
- Countertop extension
- Knife rack
- Silverware tray
- Foot flush porcelain toilet

- Storage door at dinette (1) – booth dinette only
- Bedsprad with pillows
- Bed lifters
- High density foam mattress
- Tub surround
- 15.0 BTU Ducted A/C with "Quick Cool"
- 6 Gallon gas/electric water heater with DSI
- TV antenna & cable hookup
- Exterior Shower

Exterior:

- .024 gauge mesa metal exterior
- Tinted safety glass
- Diamond plate front rock guard
- Dual 30-lb. LP bottles with cover and auto change
- Ultra lube axles
- Awning
- Hitch light
- Enclosed and heated fresh water tank
- Large folding entry assist handle
- EZ glider entry step
- White radius clamping windows
- Rubber roof

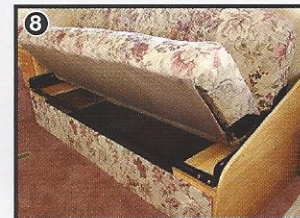
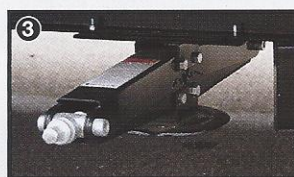
- Drip rails and downspouts
- Pass-thru storage (most models)
- Hydraulic slide mechanisms

Optional Equipment:

- Prep for second A/C (requires 50 AMP service)
- 50 AMP service
- Washer/Dryer prep with 50 AMP Service
- 10 gallon gas/electric water heater with DSI
- True Sound Entertainment System with DVD (Mandatory option - all models)
- Residential Refrigerator
- Patio door with vertical blind
- Free standing table and chairs (standard in 38FLDS)
- Hide-A-Bed sofa
- Quad bunk (in front of 38BHDS only)
- Garden shower
- Spare tire carrier and cover
- Stabilizer jacks
- Rear ladder
- Carbon monoxide detector (Mandatory)
- CSA

It's all in the details!

1. Full size cabinets in the slide room add to the already abundant interior storage.
2. Ultra-lube axles eliminate the need to re-pack your bearings.
3. Stabilizer jacks standard on all models (excluding Hornet Retreat).
4. Look for the [▲] on Hornet floor plans for the location of exterior access (pass-thru on most models) storage space.
5. Large windows help to enhance your views. Tinted safety glass is standard on all models.
6. The oversized residential kitchen sink is large enough for pots and pans.
7. 30# LP bottles with cover and hitch light. The diamond plate front rock guard helps to protect from road debris.
8. Extra storage space under your sofa is an added convenience (not available with hide-a-bed option).



Hornet Travel Trailers

	19FL	21RSL	24RSL	25FL	27B	27RLS	27FLDS	28BHDS	29FBS	29RLS	30FKS	30BHS
GVWR	6525	6605	7605	6585	7650	10,000	10,000	10,000	10,000	10,000	10,000	10,000
Gross Dry Weight	3950	5020	5460	4795	4780	6375	6765	6475	6340	6935	6840	6670
Carrying Capacity	2575	1585	2145	1790	2870	3625	3235	3525	3660	3065	3160	3330
Hitch (as weighted)	525	605	605	585	650	840	965	830	920	780	900	675
Ext. Length	22' 10"	23' 10"	26' 2"	25' 7"	28' 5"	29' 0"	29' 10"	30' 10"	32' 3"	31' 10"	32' 2"	33' 0"
Ext. Height (A/C top)	10' 0"	10' 0"	10' 1"	10' 0"	10' 1"	10' 9"	10' 9"	10' 1"	10' 9"	10' 9"	10' 9"	10' 9"
Fresh Water (Gal.)	45	45	45	45	45	45	45	45	45	45	45	45
Waste Water (Gal.)	38	38	38	32	32	38	38	38	38	38	38	38
Grey Water (Gal.)	38	38	38	70	38	38	38	38	38	38	76	38
Tire Size	205/75D14C	205/75D14C	205/75D14C	205/75D14C	205/75D14C	225/75D15D	225/75D15D	225/75D15D	225/75D15D	225/75D15D	225/75D15D	225/75D15D
Awning Length	16'	16'	16'	16'	16'	21'	16'	18'	18'	18'	18'	18'

Hornet Travel Trailers

Fifth Wheels

Hornet Retreat

	31BHS	31FLS	32BHDS	33FKDS	33FLDS	36BHS	245RK	258BH	295BH	38BHDS	38DQDS	38FLDS
GVWR	10,000	10,000	11,060	11,220	11,225	10,000	10,000	TBD	11,500	11,390	11,365	11,245
Gross Dry Weight	7105	6985	7870	7690	7895	7790	6510	TBD	7700	8575	8390	8670
Carrying Capacity	2895	3105	3190	3530	3330	2210	3490	TBD	3800	2815	2975	2575
Hitch (as weighted)	770	1035	900	1060	1065	1195	1205	TBD	1540	1230	1205	1085
Ext. Length	33' 9"	33' 6"	35' 6"	34' 2"	35' 6"	38' 2"	25' 11"	28' 2"	31' 8"	39' 10"	39' 10"	39' 10"
Ext. Height (A/C top)	10' 10"	10' 10"	10' 10"	10' 10"	10' 10"	10' 10"	11' 8"	11' 8"	11' 8"	10' 10"	10' 10"	10' 10"
Fresh Water (Gal.)	45	45	45	45	45	45	45	45	45	45	45	45
Waste Water (Gal.)	38	38	38	38	38	38	38	38	38	38	38	38
Grey Water (Gal.)	38	38	76	76	38	38	70	38	76	38	38	38
Tire Size	225/75D15D	225/75D15D	225/75D15D	225/75D15D	225/75D15D	225/75D15D	225/75D15D	225/75D15D	225/75D15D	225/75D15D	225/75D15D	225/75D15D
Awning Length	18'	18'	16'	21'	21'	21'	16'	TBD	21'	21'	21'	21'

Product information and photography are as accurate as possible at the time of publication. Colors and finishes are photographic representations and may appear differently when viewing actual materials. Features shown are not available on all models. Some features shown are options. Features, prices and specifications are subject to change without notice. 11/05

Your Hornet Dealer:

Jerry's Trailers & Campers, Inc.
 2601 South 13th St.
 Norfolk, NE 68701
 (402) 371-1306
www.jerrystrailers.com



Keystone RV Company



Keystone RV Company • 2642 Hackberry Dr., Goshen, IN 46526
 574-535-2100 • www.keystone-hornet.com