

2017 FLEETWOOD STORM

2017  
CLASS A GAS



STORM



REVGROUP

 **FLEETWOOD RV**

*America's favorite motorhomes.*



# 21 REASONS WHY FLEETWOOD IS AMERICA'S FAVORITE

Mile after mile, decade after decade, more families trust Fleetwood. The open road is our proof. With more Fleetwood motorhomes on the road today than any other manufacturer\*, our brand prides itself on building dependable products that help families reconnect one journey at a time — over and over again. At Fleetwood, we constantly redefine value because understanding your every need is just the start to delivering peace-of-mind at every turn.



## **F-21 Advantage: Fleetwood 21<sup>st</sup> century engineering, manufacturing, and materials**

Fleetwood RV offers a 21<sup>st</sup> century, industry-leading advantage—a quality construction approach to motorhome engineering, manufacturing and materials. The "F" stands for Fleetwood RV. The "21" stands for 21<sup>st</sup> century materials and construction techniques. F-21 is demonstrated by 21 key proof points that deliver unique advantages to Fleetwood owners and illustrate the quality for which Fleetwood RV is known industry-wide.

\*Based on IHS Automotive, Polk Recreational Vehicles in Operation (RVIO) as of 7/1/13.



The Storm 36D is shown in Bedford Chocolate décor and Autumn Wheat cabinetry.



# STORM

Fleetwood has created the perfect storm in RVs, combining the convenience of a Class C motorhome with the amenities of a Class A motor coach. The 2017 Storm, one of Fleetwood's mid-priced Class A gas motorhomes, features four amenity-packed floorplans. Whether you're looking for a U-dinette floorplan, a bunk bed configuration or two full baths, the Storm delivers a whirlwind of residential touches.

## TOP FEATURES

- 12" x 24" Composite Tile Flooring Throughout
- (2) Roof Mount High Efficiency Ducted 13,500 BTU Air Conditioner w/Chill Grille
- Auto Generator Start
- Hide-A-Loft™ Drop-Down Queen Bed
- Manual Day/Night Roller Shades Throughout
- Side-View Cameras
- 40" Flat Screen LED TV (Living Area)
- Residential Refrigerator
- 50-amp Electrical Service & Power Cord w/1,200-watt Inverter (32A & 34S)
- 50-amp Electrical Service & Power Cord w/2,000-watt Inverter (36D & 36F)





# STANDARDS & OPTIONS



## INTERIOR THROUGHOUT

- 12" x 24" Composite Tile Flooring
- 12V Water Pump, On Demand
- 12V USB Charging Outlets Throughout
- (2) 13,500 Btu/h Ducted Air Conditioner w/Chill Grill
- (2) 20,000/30,000 Btu/h Furnace (34S, 36F)
- 34,000 Btu/h Single Furnace (32A)
- 34,000/20,000 Btu/h Single Furnace (36D)
- (4) 6V Deep-Cycle House Batteries
- 10 Gallon Propane Water Heater w/Electronic Ignition
- 60 AMP Power Converter
- AC/DC Load Center w/12V Converter/Battery Charger
- Accent Panel w/Chair Rail
- Auto Generator Start w/Hour Meter
- Auxiliary Batteries w/Disconnect Switch
- Energy Efficient LED 3" Puck Flush Mount Ceiling Lighting
- Dedicated Full-Length, Metallic A/C Ducting
- Deluxe Roller Bearing, Full Extension Drawer Guides & Transit-Ship Locks
- Fantastic® Power Vent w/Wall Switch (Multiple Locations)
- Interior Soft-Touch Vinyl Ceiling w/Ducted Air
- Generator Auto Changeover
- Hardwood Crown Molding
- Throughout at Ceiling
- Hardwood Raised Panel Cabinet Doors Upper & Lower w/Hidden Hinges
- Hide-A-Loft™ Drop Down Queen Bed
- Manual Day/Night Double Roller Shades - Black
- Ozite Lined Shelves in Overhead Cabinets
- Polished Solid Surface Countertops
- Single Location Monitor Panel w/LPG Battery Disconnect Switches, Tank Level & Battery Readout
- Tuff-Pex™ Plumbing System
- Whole Coach Water Filtration System
- Water Heater Bypass Valve
- Fresh Water System Winterization
- Water Pump w/On/Off Switches at Monitor Panel & Lavy
- Hardwood Drawers

## OPTIONS

- CSA Package (Canadian Specs)\*\*
- Satellite Radio (Subscription Required)
- On Demand Water Heater

## DRIVER CONVENIENCE

- 110-Volt AC Outlet at Passenger Area
- 12V & USB Accessory Ports
- Auto Generator Start Switch
- Auxiliary Emergency Start Assist Switch on Dash
- Co-Pilot Integrated Dash Workstation
- Dash Radio - 6" Jensen Touch Screen & Premium Sound System w/AM/FM/CD/DVD/Bluetooth Including USB & Aux Inputs
- Driver Chair - Soft Touch w/Reclining Back, Swivel & 6-Way Power Controls - Lexington
- Passenger Chair - Soft Touch w/Reclining Back, & Swivel - Lexington
- Driver Side Console w/Integrated Magazine Rack & Solid Surface Top
- Driver/Passenger Cup Holders
- Driver/Passenger Reading Light
- Driver/Passenger Sun Visors, Power Roller Shade & Manual Day/Night Roller Shades - Black
- Electronic Cruise Control
- High Output Dash Heat & Air Conditioning
- Intense Halogen Projector Headlamps
- Momentary Battery Booster Switch - Connecting Chassis & House Batteries
- Passenger Armrest w/Integrated Magazine Rack, Cup Holder & Solid Surface Top
- Power Heated Mirrors w/Remote Switch
- Radio Switch Main/Auxiliary Power
- Rear Vision Cameras Mounted into Rearview Mirrors
- Seat Belts - 3 Point Driver & Passenger w/Adjustable Straps
- Steering Wheel w/Tilt
- Windshield Wipers w/Delay

## OPTIONS

- Driver/Passenger Pedestal Table
- Premium Radio Upgrade



## LIVING ROOM

- 40" Flat Screen LED TV (Living Area)
- L-Sofa w/Footrest & Air Bed (32A, 34S)
- Sofa - Soft Touch Lexington Jack Knife Sleeper (36D, 36F)

## GALLEY

- 3 Burner Range w/High Output Piezo Igniter & Oven w/Cooktop Cover
- 1000W Stainless Steel Convection Microwave Oven w/Electronic Touch Pad
- Adjustable Shelves Throughout Kitchen
- Deep Double Bowl Under-Mount Stainless Steel Sink
- Glass Tile Backsplash
- Polished Solid Surface Countertops, Sink & Stove Top Covers
- Power Ceiling Vent Fan
- Refrigerator - 11 cu. ft. Residential Stainless Steel (32A, 34S)
- Refrigerator - 18 cu. Ft. Residential Stainless Steel w/2000W Pure Sine Inverter w/Remote (36D, 36F)
- Residential Single Handle Faucet w/Pullout Sprayer - Satin Nickel
- Satin Nickel Finish Cabinet Hardware
- Sink Cover/Cutting Board
- Slide-Out Dinette Bins w/Latches
- Toe Kick at bottom of Cabinets
- Waste Basket

Remote (36D, 36F)

- Residential Single Handle Faucet w/Pullout Sprayer - Satin Nickel
- Satin Nickel Finish Cabinet Hardware
- Sink Cover/Cutting Board
- Slide-Out Dinette Bins w/Latches
- Toe Kick at bottom of Cabinets
- Waste Basket

### OPTIONS

- 3-Burner Range w/Oven ILO Drawers
- Refrigerator - 8 cu. ft. 2-Door Wood Insert - Dometic (32A, 34S)

## BEDROOM

- 24" Flat Screen LED TV w/ Remote DVD/Game System Connections (Bunk Area - 36D, 36F)
- 32" Flat Screen LED Bedroom TV w/Connections To Add Satellite Receiver and DVD (36F)
- Bedsprad w/Integrated Shams & Accent Pillows
- Bunk Bed Bedsprads and Privacy Curtains (36D, 36F)
- Bunk Beds w/5" Foam Mattress (36D, 36F)
- Designer Headboard
- King Size Dream Easy Mattress (32A, 36D, 36F)
- Lift Up Bed w/Under Bed Storage
- Queen Size Dream Easy Mattress (34S)
- Reading Lights in Bed Overhead Cabinet
- Remote Generator Start Switch
- Solid Surface Nightstand Tops

### OPTIONS

- Washer & Dryer Combo (32A, 34S, 36F)

## BATHROOM

- Accessories: Towel Bar & Toilet Paper - Satin Nickel
- Bath Door w/Residential Passage Lock
- Deluxe Hardwood Medicine Cabinet w/Mirror
- Fiberglass Shower
- Glass Shower Door - Rain Glass
- Metal Shower Head w/On/Off, Sliding Adjustable Bar, Soap Dish & Matching Dual Valve Faucet
- Residential Brushed Nickel Single Handle Faucet w/Large Sink
- Residential Porcelain and/or Stainless Steel Lavy Sink
- Residential Water Saver & Vacu-Flush Porcelain Toilet
- Shower Skylight/Roof Vent w/12V Fan Bathroom
- Window Treatment (Select Models)

## SAFETY/CONVENIENCE

- 10 lb. ABC Fire Extinguisher
- Battery Access Entry Step Cover
- Battery Disconnect
- Carbon Monoxide Detector/Alarm
- Egress Windows
- Entry Door Manual Roller Shades
- Exterior & Interior Entry Assist Handle
- GFI Circuit Protection
- Master Light Switch at Entry For All Storage Compartments
- Multiple Seatbelt Locations
- Propane Detector/Alarm
- Rubber Entry Step w/ABS Sides
- Smoke Detector/Alarm

## EXTERIOR THROUGHOUT

- 4-Color Premier Full-Body Paint w/Front Clear Protective Mask
- 4-Point Automatic Levelers
- ABS Wheel Well Skirts
- Antenna - Unidirectional King Controls Jack Antenna
- Automotive Style Soft Dash
- Automotive Style Windshield Wiper System
- Awning - Single Wall Mounted Legless Patio Awning w/LED Lighting & Wind Sensor Retract - Carefree
- Awning - Slide Out Toppers Above All Slide Outs - Dometic
- (4) 6V Deep Cycle House Batteries
- Black Instrument Gages w/Electronic Information Center
- Black Water Tank Flush
- Corrosion Resistant Steel Luggage Door Hinges
- Daytime Running Lights
- Deadbolt Lock & Frameless Window
- Door Side Area Patio Light
- Driver Side Area Patio Light Above Service Center
- Entrance Door - Radius Trimmed Door w/Black Interior & Black Screen Door, w/Rotary Latch
- Exterior Kitchenette w/Mini Fridge, Microwave, Cabinet Storage, and Pull Out Counter Surface (36D)
- Exterior Wall Mounted Entertainment Center - w/32" LED TV, AM/FM/CD/DVD Radio
- Exterior Lighted Power Entry Step
- Exterior Service Station - Including Water Pump Switch, Exterior Shower, Black Tank Flush, City Water Hookup & Drainage Valves
- Fiberglass Aerodynamic Front Cap w/Automotive Headlighting & Hood Insert
- Fiberglass Rear Cap w/Automotive Lighting
- Formed Grille & Air Intake
- Front/Rear LED Clearance & Marker Lighting
- Front/Rear Mud Flaps
- Gravity Water Fill
- Hitch - Capacity of 5,000 # w/7-Way Round Tow Connection
- Intense Halogen Projector Headlamps w/LED Accents
- Large Lighted Roto-Molded Polyethylene Compartments
- One Piece TPO Domed Roof
- Prep for Roof-Mounting Satellite Dish
- Rear Ladder - Brushed Aluminum Color
- Remote Power/Heated Mirrors w/Turn Signals & Cameras
- Side-Swing, Insulated Aluminum Luggage Doors w/Single Paddle Latch
- Solar Electrical Panel Prep
- Stainless Steel Wheel Simulators & Valve Stem Extenders
- Surge Guard Transfer Switch Tinted Slider Driver/Passenger Windows
- Underhood Utility Light
- 12V 3GPM High Capacity Shurflo Water Pump
- Large Dark Tinted Frameless Single Pane Windows

### OPTIONS

- DSS Auto-Locating Stationary Satellite Dish - Wineguard
- Neutral Loss Protection
- On Demand Water Heater
- Large Dark Tinted Frameless Dual Pane Windows Throughout
- King Dome Satellite System
- Roof Vent Rain Cover

## SAFETY/CONVENIENCE

- 50 Amp Electrical Service & 30' Power Cord
- AC Duplex GFI Receptacle on Patio Side
- Acrylic Grab Handle at Entry Door
- Amber Porch Light w/Interior Switch
- Automatic Hydraulic Leveling Jacks
- Automotive Safety Glass
- Daytime Running Lights
- Entry Door w/Screen Door & Deadbolt Lock
- High Mounted Large LED Taillights
- Power Electric Step



## STORAGE

- Molded Cross Link Polyethylene Battery Compartment w/Lid
- Pass Through Storage
- Rotocast Molded Storage Boxes
- Slam Latch Luggage Doors

## BODY STRUCTURE

- Aluminum Bus-Style Side Swing Luggage Doors
- Basement Storage Lighting w/Individual Switches and Master Switch Inside Entry
- Corrosion Resistant Aluminum Tube Hull Framing
- Dryseal™ Edge Coating Water-Wicking Wall Edge Coating
- Electric Main/Bedroom/Wardrobe/Kitchen Slide Out Systems
- F-21 Construction & Manufacturing Technology
- Ford 22,000lb Chassis w/320HP V10
- Full Coverage Heavy Duty Undercoating
- Full Pass Through Storage w/Roto-Molded Construction
- Heated Fresh Water & Holding Tank Compartments
- Molded Entry Step
- Powder & Liquid Coated Steel
- Frame Chassis Construction
- Powerframes™ Precision Welding w/5-Point Build System
- Powerlock System™ w/Interlocking Floor, Walls & Ceiling
- Power Platform™ Chassis Construction
- Premium Colored Full Body Paint
- Radiused Entry Door
- Raised Space Frame Foundation
- Rotational Molded Easy To Clean Service Compartment
- Solid Bead-Foam Engineered Fit Insulation™
- Vacu-Bond™ Integrated Walls
- Vacu-Bond™ Aluminum Framed Sidewalls, Roof and Floor Construction



# DÉCOR & EXTERIOR CHOICES

## Autumn Wheat



## Nottingham Cherry



## Gray Relic



1 | Sofa 2 | Accent 3 | Bedspread 4 | Countertop 5 | Flooring 6 | Carpet

## Bedford Chocolate



## London Fog



## Sequoia



## Inferno



## Stone Shadow





# FLOORPLANS & SPECIFICATIONS

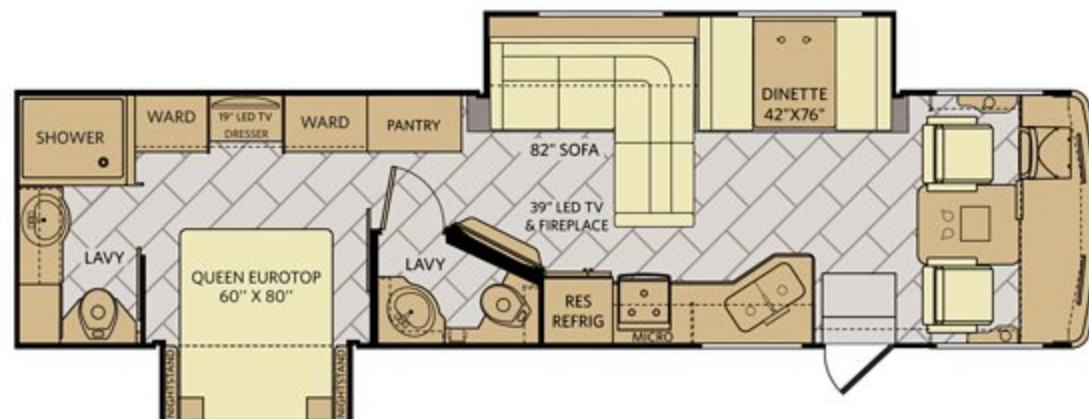
32A

Options: 105, 113, 126, 186



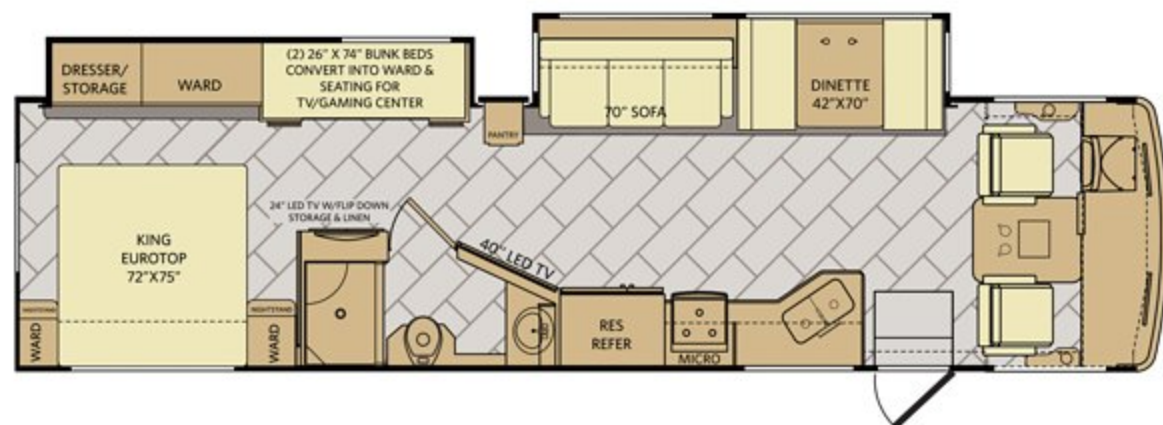
34S

Options: 105, 113, 126, 186



36D

Options: 113, 186



36F

Options: 113, 126, 186



Available Options



OPT. 105  
2-DOOR REFRIG  
W/ICEMAKER



OPT. 113  
3-BURNER  
COOKTOP  
W/OVEN



OPT. 126  
WASHER  
/DRYER



OPT. 186  
DRIVER/PASSENGER  
PEDESTAL TABLE

## CHASSIS

MODEL	32A	34S	36D	36F
Wheelbase	208"	228"	228"	242"
GVWR (lbs) <sup>1</sup>	22,000	22,000	22,000	22,000
Front GAWR (lbs) <sup>2</sup>	8,000	8,000	8,000	8,000
Rear GAWR (lbs) <sup>2</sup>	15,000	15,000	15,000	15,000
GCWR (lbs) <sup>3</sup>	26,000	26,000	26,000	26,000
Hitch Rating Weight (lbs) <sup>†</sup>	5,000	5,000	5,000	5,000
Tongue Weight (lbs)	500	500	500	500
Fuel Capacity (gal)	80	80	80	80

## FORD® CHASSIS

Model: Ford  
Engine: 6.8L Triton V10  
Transmission: Ford 6-Speed w/Automatic Overdrive

Alternator: 175 Amp  
Torque: 460 lb.-ft. @ 3,250 RPM  
Horsepower: 320 HP

## DIMENSIONS AND CAPACITIES

MODEL	32A	34S	36D	36F
Overall Length <sup>4</sup>	34' 8"	36' 2"	36' 2"	38' 8"
Overall Height (suspension inflated) <sup>5, 6</sup>	12'	12'	12'	12'
Overall Width (suspension inflated) <sup>5, 6</sup>	102"	102"	102"	102"
Interior Height (maximum)	82"	82"	82"	82"
Interior Width (maximum)	96"	96"	96"	96"
Patio Awning Width	18'	18'	18'	18'
Interior Storage (cu. ft.)	142	150	204	171
Exterior Storage (cu. ft.)	151	160	106	139
Fresh Water Holding Tank (gal)	60	60	60	60
Grey Water Holding Tank (gal)	37	37	37	80
Black Water Holding Tank (gal)	37	37	37	37
Appliance Propane Tank (gal) (WC) <sup>7</sup>	14	14	14	14
Water Heater Tank (gal)	10	10	10	10



America's favorite motorhomes.

YOUR LOCAL DEALER

## DISCLAIMERS

- GVWR (Gross Vehicle Weight Rating) is the maximum permissible weight of this fully loaded motor home. The GVWR is equal to or greater than the sum of the (UVW) unloaded vehicle weight plus the (OCCC) occupant cargo-carrying capacity.
- GAWR (Gross Axle Weight Rating) is the maximum permissible loaded weight a specific axle is designed to carry.
- GCWR (Gross Combined Weight Rating) is the value specified by the motor home manufacturer as the maximum allowable loaded weight of this motor home with its towed vehicle. Towing and braking capacities may be different. Refer to Fleetwood and chassis manufacturer's manuals for complete information.
- Length measured from front bumper to rear bumper (excludes accessories).
- Excludes safety equipment and awnings.
- Motor homes feature a body width over 96" which will restrict your access to certain roads. Before purchasing, you should research any state and/or province road laws which may affect your usage.
- Tank manufacturer's listed water capacity (WC). Actual propane capacity is 80% of water listing as required by the safety code.
- † The chassis manufacturer recommends the installation of a supplemental brake control system to activate the brakes on the vehicle or trailer you are towing. Hitch receiver ratings expressed are maximum for the hitch receiver installed and may require the purchase of additional equipment that is dependent on the weight of the towed load. Consult with hitch receiver manufacturer for further information.
- \* UVW and OCCC are found on the label containing the federal certification tag in each RV.

\*\* All 2017 REV Recreation Group motorhomes include a limited one-year/15,000-mile coach warranty and three-year/45,000-mile structural warranty, whichever occurs first, and is fully transferable for the first 12 months.

## FLEETWOOD MOTORHOME ASSOCIATION

As a Fleetwood RV owner, you're invited to become a member of the Fleetwood Motorhome Association (FMA). Becoming a member is the perfect way to meet other Fleetwood owners who love to travel across America and share in the RV lifestyle. Visit the FMA website at [www.fma4fun.org](http://www.fma4fun.org) to learn more and join the fun.

## CONTACT US

To locate a dealer near you, visit our website at [www.fleetwoodrv.com](http://www.fleetwoodrv.com) or call 1-800-322-8216. We can also be contacted at Fleetwood RV Customer Relations, P.O. Box 1007, Decatur, IN 46733.

IMPORTANT—PLEASE READ: Product information, photography and illustrations included in this publication were as accurate as possible at the time of printing. For further product information and changes, please visit our website at [www.fleetwoodrv.com](http://www.fleetwoodrv.com) or contact your local Fleetwood RV dealer. Prices, materials, design and specifications are subject to change without notice. All weights, fuel, liquid capacities and dimensions are approximate. Fleetwood RV has designed its recreational vehicles to provide a variety of uses for its customers. Each vehicle features optimal seating, sleeping, storage and fluid capacities. The user is responsible for selecting the proper combination of loads (i.e., occupants, equipment, fluids, cargo, etc.) to ensure that the vehicle's capacities are not exceeded.



Fleetwood RV is part of REV Recreation Group, a division of REV Group, Inc., a family of 26 industry-leading motor vehicle brands. At REV Group, we innovate, design and build products that connect and protect thousands of people every day—our trusted vehicles are engineered with the utmost rigor and precision to deliver the highest levels of performance, reliability, durability and safety.

[www.fleetwoodrv.com](http://www.fleetwoodrv.com)

©2016 REV Group, Inc. Printed in the USA. Inventory Control Number ST17B1, 09/16. Model Year 2017, Second Edition.