

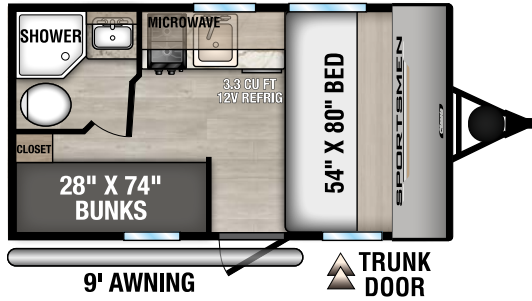


RECREATIONAL  
VEHICLES

# SPORTSMEN

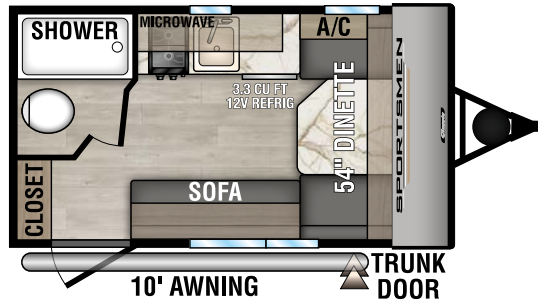
*Classic*

ULTRA LIGHTWEIGHT TRAVEL TRAILERS

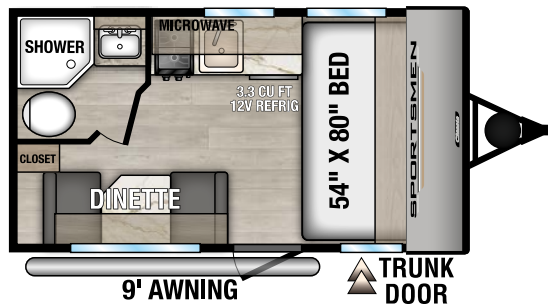


**NEW**

130BH UVV - 2,580 | Exterior Length - 16' 9" | Sleeps - 4

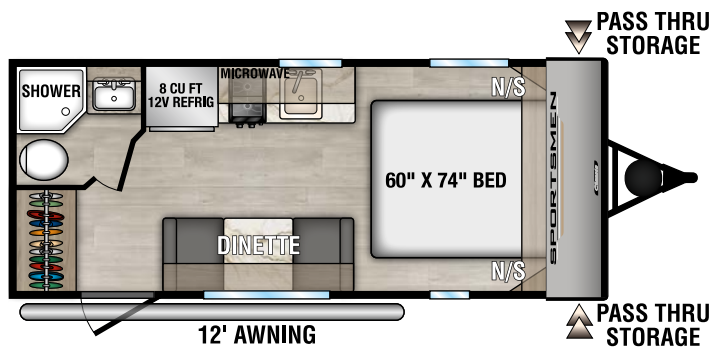


130RB UVV - 2,620 | Exterior Length - 16' 9" | Sleeps - 2



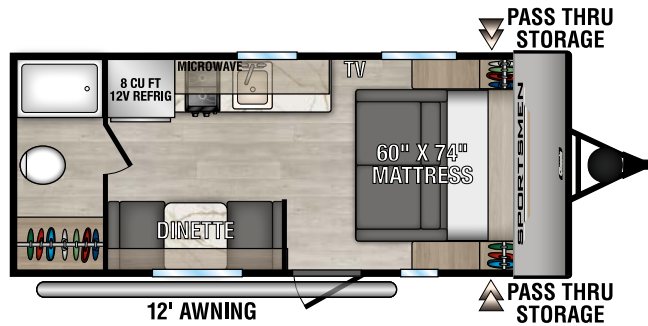
**NEW**

130RD UVV - 2,570 | Exterior Length - 16' 9" | Sleeps - 3

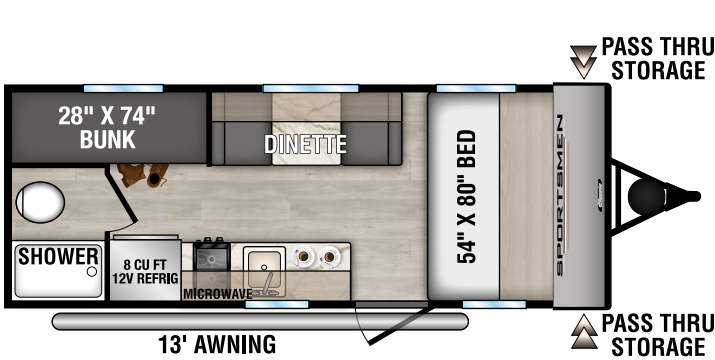


160QB UVV - 3,200 | Exterior Length - 21' 8" | Sleeps - 3

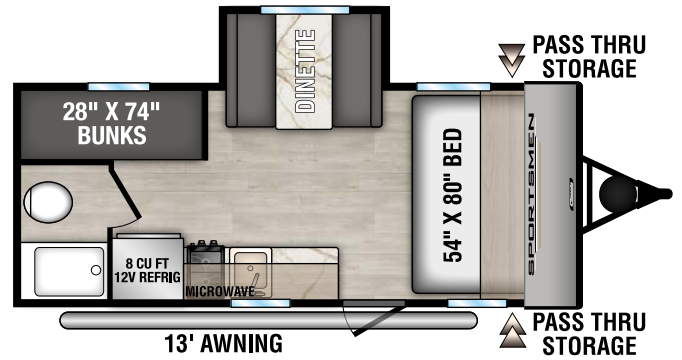
# 2025 SPORTSMEN CLASSIC



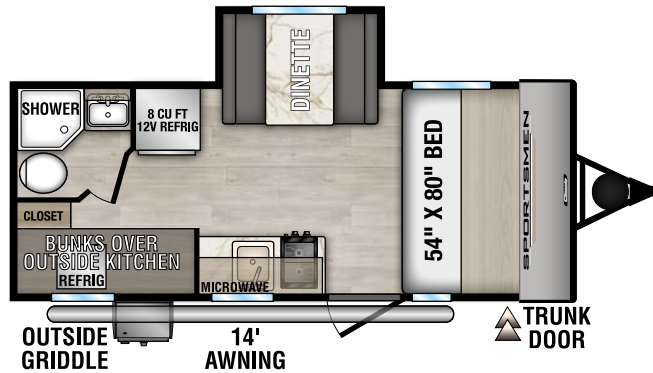
170MB UVW - TBD | Exterior Length - 21' 8" | Sleeps - 3



180BH UVW - 3,160 | Exterior Length - 21' 4" | Sleeps - 4



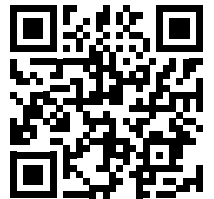
181BH UVW - 3,480 | Exterior Length - 21' 4" | Sleeps - 5



191BHK UVW - 3,740 | Exterior Length - 21' 10" | Sleeps - 5

## OPTIONAL OFF-ROAD PACKAGE

- Aluminum Rims w/15" Mud Tires
- Extra Ground Clearance
- Electronically-Controlled Heated Holding Tank
- Double Entry Step (select models)



Sportsmen Classic



985 N 900 W SHIPSEWANA, IN 46565

E: KZ@KZ-RV.COM

WWW.KZ-RV.COM

Due to continual research and advances, manufacturer reserves the right to change specifications, design, price and equipment without notice, and assumes no responsibility for any error in this literature. Some items shown are not included as standard or optional equipment. ©2024 K. Z., Inc., a subsidiary of THOR Industries, Inc. | 12/11/24 | 5M

Dealer: