

# 2025 VISION XL

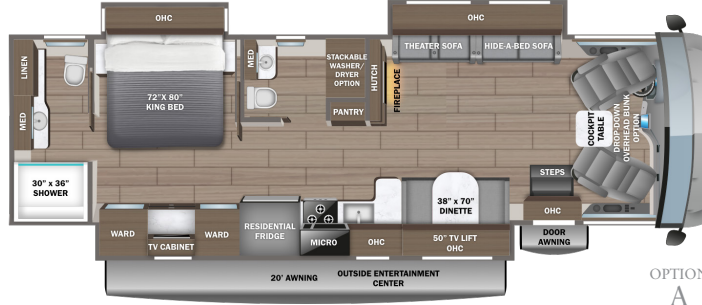
## Gas Class A Motorhome

31UL



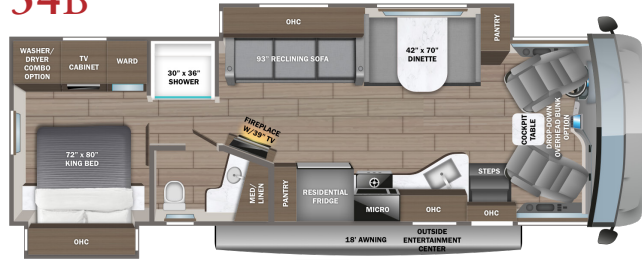
OPTIONS  
A AND B

36C



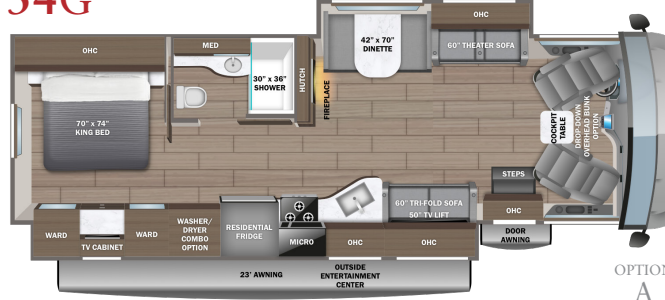
OPTION  
A

34B



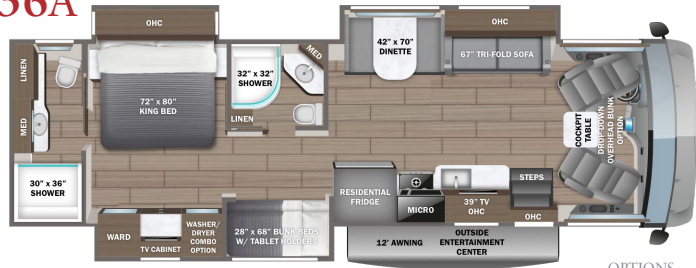
OPTION  
A

34G



OPTION  
A

36A



OPTIONS  
A AND B

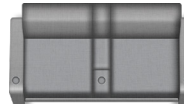
### OPTIONS

A



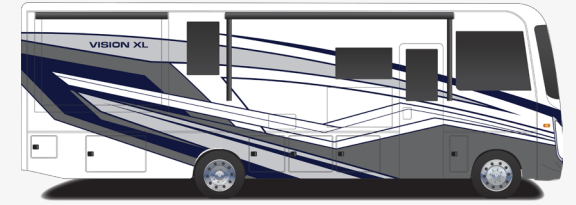
15 cu. ft.  
Fridge

B

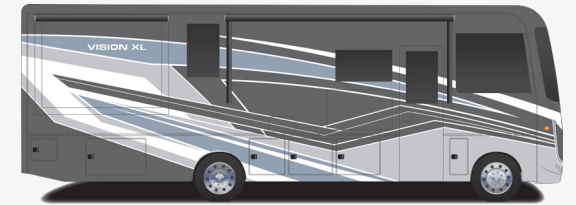


Theater Sofa

### EXTERIOR SELECTIONS



Glacier Blue Full-Body Paint



Harbor Gray Full-Body Paint



Lava Rock Full-Body Paint



Thunder Full-Body Paint

## CUSTOMER VALUE PACKAGE

E-Z Drive™ Elite: Computer-balanced driveshaft, Bilstein® steering stabilizer, Koni® shocks, variable-rate front and rear jounce bumpers, heavy-duty front and rear stabilizer bars, 22.5 in. Michelin® tires  
Automatic hydraulic leveling jacks  
Lippert™ 4000 series frameless bonded windows  
15,000 BTU A/C unit with heat pump and second 13,500 BTU A/C unit  
Exterior entertainment center with outside speakers and LED HD Smart TV mounted on swivel bracket  
Electric patio awning with LED lights  
Slideout cover awnings  
5,500W generator with auto-gen start  
1,200W inverter  
50-amp electrical service  
10 gal. gas/electric water heater  
Sony® infotainment center with Apple CarPlay® and Android Auto™  
Backup and side-view cameras  
Removable driver/passenger cockpit table  
LED-lit, solid-surface kitchen countertops with recessed stainless steel sink and sink covers  
LED HD Smart TV in living area  
Integrated day/night cassette shades

## STANDARD CHASSIS EQUIPMENT

Ford® F53 chassis  
GVWR - 22,000 lb. (34B, 34G) 24,000 lb. (36A, 36C)  
GCWR - 26,000 lb. (34B, 34G), 30,000 lb. (36A, 36C)  
7.3L V-8 335 HP engine with 468 ft.-lb. torque  
6-speed automatic TorqShift® transmission with overdrive and tow haul mode  
210-amp alternator  
Catalytic converter theft deterrent  
G-rated highway tires - 235/80R22.5 (34B, 34G), 255/80R22.5 (36A, 36C)  
Front and rear disc, 4-wheel anti-lock brakes  
5,000 lb. rear hitch receiver with dual connector and 7-pin plug  
12V chassis battery  
80 gal. fuel tank

## STANDARD EXTERIOR EQUIPMENT

TuffShell™ vacuum-bond laminated roof, floor and sidewalls  
Bead-foam insulation (R-24 max roof, R-9 max floor, R-8 max walls)  
One-piece, seamless fiberglass front cap with partial paint  
One-piece, seamless fiberglass rear cap  
One-piece, seamless, crowned fiberglass roof  
Fiberglass exterior walls with vinyl graphics

Entrance door with industry's largest travel-view window  
Electric-powered entrance steps  
Lockable pass-through storage compartments with metal slam latches  
Third brake light  
Roof ladder  
Prep for satellite dish  
Cable TV hookup with RG-6 coax  
Winegard 2.0 Wi-Fi/4G antenna  
200W solar panel with dual controller  
(2) 6V AGM (220Ah) house batteries on slideout tray  
Transfer switch with reverse polarity protection  
Detachable power cord  
16.5 gal. propane tank (56-lb.)  
LP quick-connect hookup  
Heated holding tanks (12V pads)  
Exterior utility center  
Winterization drain system  
Black tank flush  
Outside shower  
12V demand water pump  
Water filtration system

## STANDARD COCKPIT EQUIPMENT

120 in. panoramic windshield  
Power front privacy shade with manual side privacy shades  
6-way power and swivel driver/passenger seats  
Soft-touch, vinyl-wrapped automotive dash  
Tilt steering wheel  
Cruise control  
Hill start assist  
Electronic stability control  
Traction control  
Auxiliary start

## STANDARD INTERIOR EQUIPMENT

Firefly Multiplex system - wall-mounted touchscreen and mobile app for total coach control  
84 in. interior ceiling height with padded vinyl ceiling  
High-intensity recessed LED ceiling lights  
LED-lit fascia  
Hardwood cabinet doors and drawer fronts  
Ball-bearing drawer guides  
30,000 BTU auto-ignition ducted furnace (34B, 34G, 36C)  
(2) 30,000 BTU auto-ignition ducted furnaces (36A)  
Electric fireplace (34B, 34G, 36C)  
Entegra-exclusive, easy-operation legless dinette table

2-point lap safety belts in all designated seating locations  
Car seat tethers (select floorplans)  
JBL® audio system  
Smoke alarm  
Carbon monoxide detector  
Fire extinguisher  
Residential refrigerator  
Furrion® all-in-one cooktop and oven  
Residential-size microwave  
Decorative kitchen backsplash  
Walk-around, king-size bed with bedspread and nightstands  
USB port and wireless charging in nightstands  
Under-bed storage (select models)  
LED HD Smart TV in bedroom  
Large wardrobes  
Bunks with industry-exclusive, 300 lb. capacity each (36A)  
Wall-mounted tablet holder in each bunk (36A)  
Shower with decorative surround, glass door, skylight and light  
Recessed stainless steel bathroom sink  
Porcelain toilet with foot flush  
Powered roof vent in bathroom with wall switch

## OPTIONS

Drop-down overhead bunk in cab area with 750 lb. capacity  
Combination washer/dryer (34B, 34G, 36A)  
Stackable washer/dryer (36C)  
Power theater seating (31UL, 36A) (STD 34G, 36C)  
15 cu. ft. 12V refrigerator



## NO ONE OFFERS A BETTER WARRANTY

At Entegra Coach, we build our RVs to handle every adventure, then back them with our industry-leading 2+3 limited warranty. Our 2-year limited warranty has you covered for 2 camping seasons. That's 730 days. In addition, our 3-year structural limited warranty has you covered for 3 camping seasons or 1,095 days. You won't find a better limited warranty in the business, because the only strings we attach are those that deliver the ultimate in reliability. For a copy of our 2-year limited + 3-year structural limited warranty with complete terms and conditions, please contact your local Entegra Coach dealer.

It is important for your safety and enjoyment that you are aware of the weights and tow ratings of the RV you select. Consult a competent advisor for questions or advice. Whether you are new to RVing or a veteran, get a feel for the performance of your RV before heading out on the roadways. When you tow a vehicle with your RV, you must drive differently than when you drive a single vehicle. Practice hooking up, driving, backing up and braking in a safe environment or seek out professional instruction. Jayco affixes a weight label to each RV which lists weight information for that vehicle. Refer to that label to verify the vehicle will meet your requirements. Gross Vehicle Weight Rating (GVWR): The maximum permissible weight of the motorhome, including the Unloaded Vehicle Weight (UVW) plus passengers, personal items, all cargo, fluids, options and dealer-installed accessories. The GVWR is equal to or greater than the sum of the UVW and the Cargo Carrying Capacity. Gross Combined Weight Rating (GCWR): The maximum allowable combined weight of the motorhome used as a tow vehicle and the attached towed vehicle.

Floorplan	GVWR (lbs.)	GCWR (lbs.)	Wheel Base	Overall Length	Exterior Height w/ A/C & Satellite	Exterior Width	Interior Height	Fresh Water Capacity (gal.)	Grey Waste Water Capacity (gal.)	Black Waste Water Capacity (gal.)
31UL	22,000	26,000	228	36' 11"	12' 10"	101	84	72	40	40
34B	22,000	26,000	228	36' 11"	12' 10"	101	84	72	40	40
34G	22,000	26,000	238	36' 6"	12' 10"	101	84	72	40	50
36A	24,000	30,000	252	38' 10"	12' 10"	101	84	72	40/40	51/51
36C	24,000	30,000	252	38' 10"	12' 10"	101	84	72	40/32	40/32

Colton RV & Marine  
3122 Niagara Falls Blvd.  
North Tonawanda, NY 14120  
(716) 694-0188  
www.ColtonRV.com

Colton RV  
489 Bushkill Plaza Ln  
Wind Gap, PA 18091  
(610) 863-5239  
www.ColtonRV.com



Part of Jayco Family of Companies

Entegra Coach, Inc., P.O. Box 460, Middlebury, IN 46540, www.entegracoach.com. See dealer for further information and prices. All information in this brochure is the latest available at the time of publication approval. Entegra Coach reserves the right to make changes and to discontinue models without notice or obligation. Photos in this brochure may show optional equipment and props for photography purposes. RVs built for sale in Canada may differ to conform to Canadian codes. ©2025 Entegra Coach, Inc. Printed in U.S.A. 2032947



entegracoach.com/vision-xl

LEGACY ISN'T LEFT,  
IT'S LIVED.