

THUNDERBOLT

XLR



THE BOLDER SIDE OF LUXURY LIVING

415AMP

415AMP
All Thunderbolts are built with the largest frameless windows available for the best view of the great outdoors. This model has it all...more kitchen drawers than many homes, a huge hallway pantry, a deep bowl sink with plenty of countertop area, making food prep a cinch. A standard recliner and trifold sofa provide the ultimate in comfort. The North/South loft design allows for the perfect TV viewing angle for movie night, too.





415AMP *This spa-style bathroom features a full sized shower with a built-in seat and glass door.*



415AMP *This roomy king master suite is the perfect place to unwind after an eventful day. Rich, deep earth tones, vibrant accents, a walk-around bed, a sizable walk-in closet, and contemporary styling create a luxurious retreat.*

THE BOLDER SIDE OF LUXURY LIVING

**XLR
THUNDERBOLT**

Sleek and enticing, XLR Thunderbolt toy haulers raise the standard for luxury living. Built for the seasoned RV enthusiast, Thunderbolt's style is bold and uncompromising. Floorplans are carefully planned to create cohesive living spaces that lead the eye from room-to-room. Rich Cognac Maple wall panels, plush contemporary upholstery, solid surface countertops and custom cabinetry create a warm, inviting ambience.

415AMP
This kitchen is loaded with convenience features designed to make food prep a breeze, including a 12 cu. ft. refrigerator, island sink, and tons of storage.



401AMP



401AMP Every Thunderbolt bedroom suite comes with a gel memory foam mattress, under bed storage, and an extra deep slide out for plenty of space to dress. Mirrored doors open to reveal a front end closet with ample hanger space, abundant shelving, and a dresser. Tall ceilings and cross-ventilation windows add headroom and fresh air to an already sumptuous living space.

**XLR
THUNDERBOLT**

Dressed to Thrill

Distinctively bold styling sets XLR Thunderbolt apart. Thunderbolt's contemporary floorplans offer the ultimate in comfort and convenience with outstanding storage capacity, residential style galleys, spacious living areas, name brand amenities and private sleeping quarters.

401AMP

This slide out features standard theater seating adjacent to the 12 cu. ft. refrigerator for easy access to snacks and beverages.





401AMP Get together and enjoy the view. This unique dual slide seating arrangement includes an L-shaped lounge and a trifold sofa for comfortable and relaxing conversation. This open concept floor plan puts the family "chef" where the action is. The kitchen has a telescoping countertop, rich Cognac Maple cabinets, loads of storage, and a 22" oven with 3-burner cooktop. Need more room? The versatile garage accommodates guests, gear and good times. The standard sliding glass patio door also lets you keep an eye on activities at the kid's table.

395 AMP

XLR
THUNDERBOLT



395AMP This spacious master suite features his and her wardrobes, a computer workstation, a built-in dresser with deep drawers, plenty of walk around bed space, and a full, floor-to-ceiling entertainment center (not shown).



395AMP This spacious bathroom has a solid surface countertop and boasts one of the largest vanities in the industry, complete with a generous medicine cabinet. The blue LED shower light works as a subtle night light.

395AMP Cook up something amazing on the three burner cooktop and oven. This kitchen is a great place to entertain with an oversized island bar and tiered solid surface countertop, a 12 cu. ft. refrigerator, bluetooth media center, LCD HDTV, and a large coat closet.





395AMP Thunderbolt's interior styling sets the stage for a good time with 7'6" main slide rooms, panoramic windows, solid surface countertops, an ultra-deep 60/40 stainless steel sink with high-rise gooseneck faucet, a quad door 12 cu. ft. refrigerator, contemporary pendant lighting, and an oversized pantry with adjustable shelves. This 395AMP has a 14' rear living zone and even storage for pet bowls underneath the oven. (Optional trifold sofa with dual recliners shown.)

350X12HP



350X12HP

The Happijac electric bed/dinette can transform the rear living zone from a dining room, to a bedroom, to a garage, and back again in just a few minutes. An optional electric fireplace is also available.



EDGY AND REFINED

After a day of playing hard, rich deep earth tones and vibrant accents with contemporary styling create a warm, welcome feeling that sets this stylish RV apart from the rest.



350X12HP

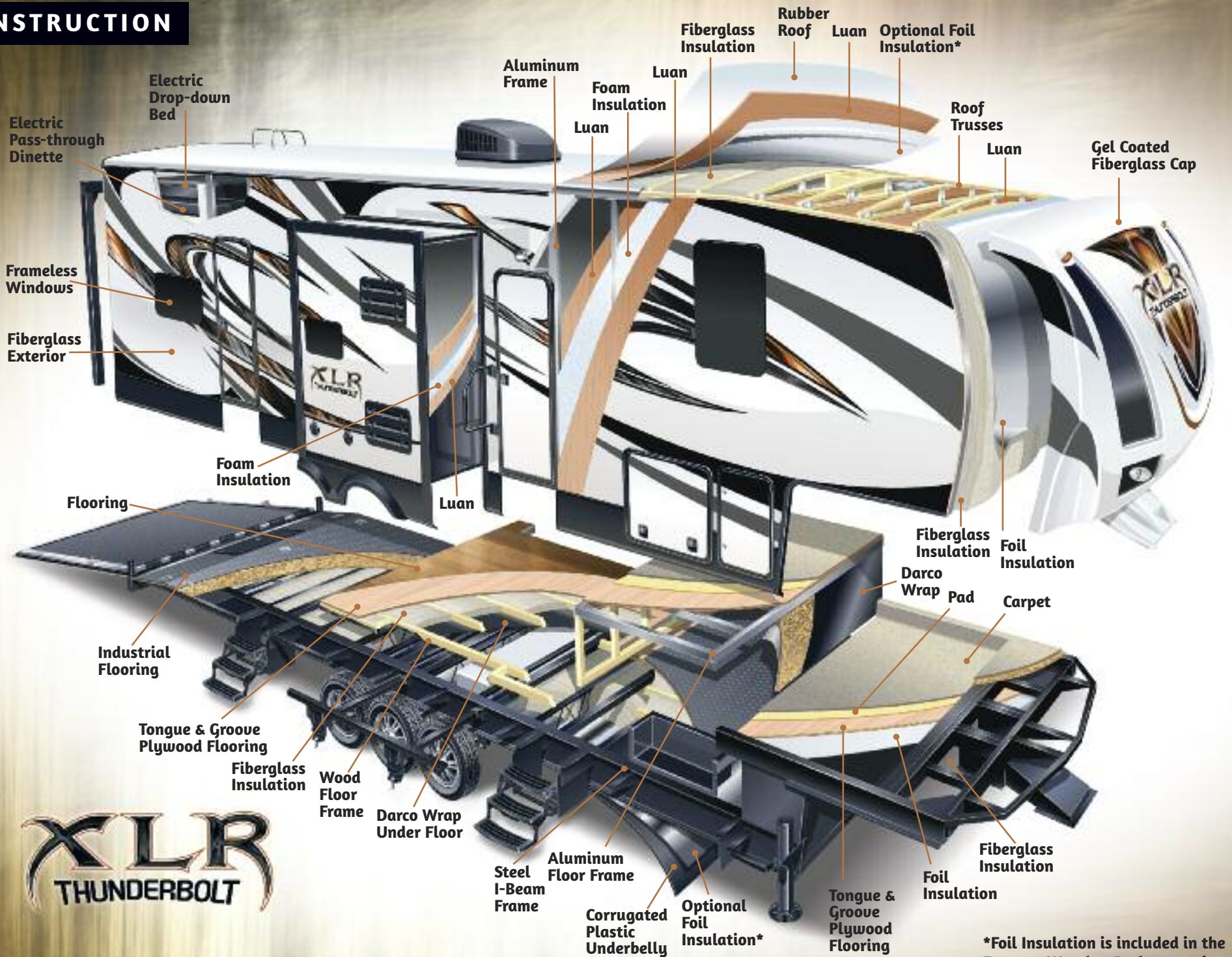
This inviting North/South 60" x 80" queen bedroom suite has a Dream Comfort Gel Memory Foam Mattress, overhead storage, his and her nightstands, charging stations, and a dresser/wardrobe.





350X12HP *This opposing slide, tandem axle model feels like home. The oversized windows and huge solid surface countertops create an inviting place to cook and kick back. This model is shown with our overhead storage option in place of the standard loft configuration.*

CONSTRUCTION



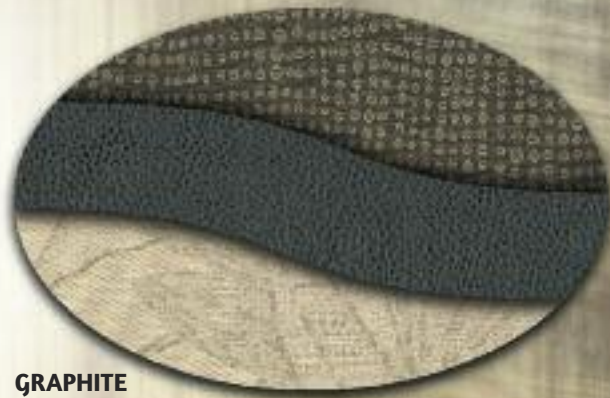
XLR THUNDERBOLT

*Foil Insulation is included in the Extreme Weather Package option.

Decor and Exterior Graphics Options



STOUT



GRAPHITE



MIDNIGHT

**STANDARD
GRAPHICS**



**BLACK PEARL -
FULL BODY PAINT**



**COBALT BLUE -
FULL BODY PAINT**



**VICTORY RED -
FULL BODY PAINT**



**ACID GREEN -
FULL BODY PAINT**



**HD ORANGE -
FULL BODY PAINT**



FEATURES



XLR THUNDERBOLT

Loaded with Features

XLR Thunderbolt is designed with luxury features throughout.



A Bluetooth, touch-screen audio system syncs with a smart phones and iPod.



Three-burner stove top includes a 22" oven.



Garmin RV 760PRO GPS and Trip Planner includes an easy to read 7" display, wireless back-up camera, and syncs with a smart phone via Bluetooth.



Cool, long-lasting LED pendant lighting completes the decor (AMP models only).



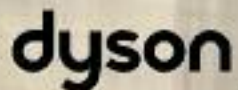
Thunderbolt's six-point hydraulic auto Level Up system is available as an option.



Thunderbolt comes standard with front hydraulic landing gear.



A recessed, dove-tail storage compartment is standard in the AMP.



A powerful cordless vacuum by Dyson makes quick clean ups a breeze.



5,000 lb flush-mounted D-rings are standard in both the garage area and pass-through storage compartment.



Frameless windows are standard on all Thunderbolts.



Washer/Dryer prep is in the garage instead of the bedroom closet for better access.



Take the party outside, while keeping everyone together. This VIP party deck extends useful living space while keeping the gang together.

XLR LIMITED TIME OFFER!



Accelerator Package – Correct Track Laser Alignment, Hydraulic Auto Level System IPO Rear Electric Jacks, Dyson Cordless Vacuum, Dream Comfort Gel Memory Foam Mattress, Easy Reel Cord Spooler
Check with your Dealer today!

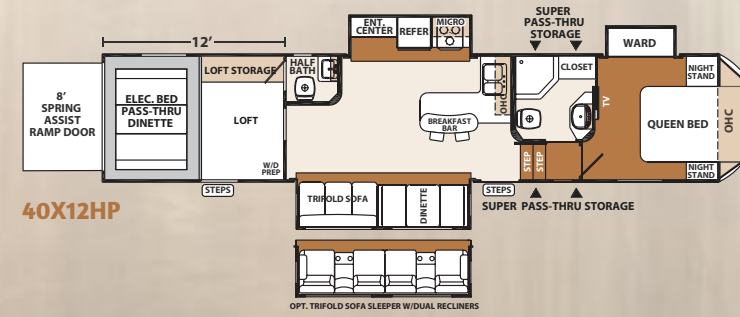
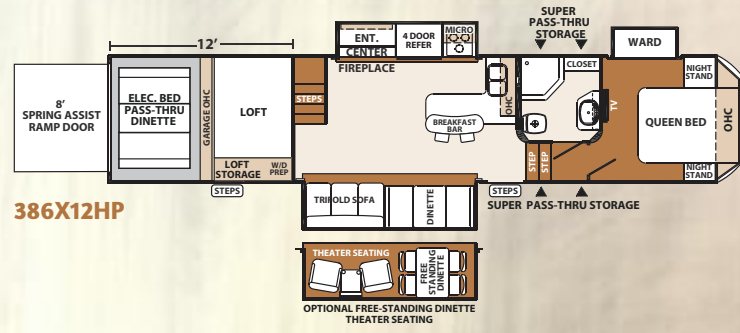
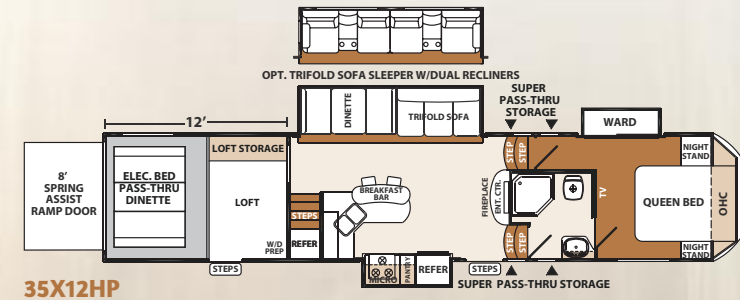
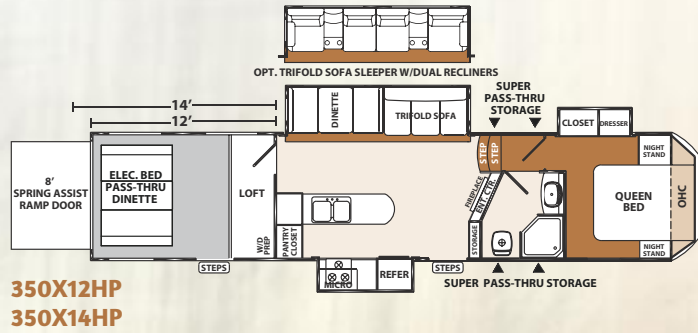
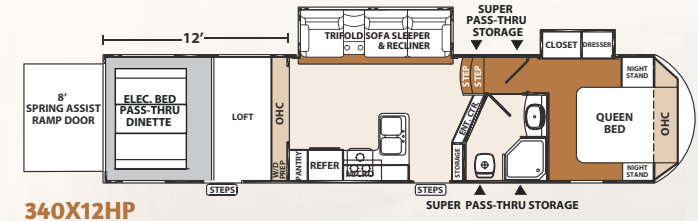
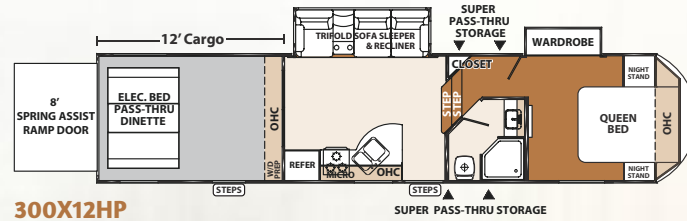
FLOORPLANS

Interior Standards

- Professionally Designed Interiors
- Custom Hardwood Cognac Maple Cabinets with Raised Panel Doors
- Raised Hardwood Panel Refrigerator Fronts
- LG Solid Surface Countertops
- Crown Molding Throughout
- Night Shades
- Attic Ventilation System
- Large Residential Microwave (Select models)
- Stainless Steel Deep Bowl Kitchen Sink
- 7'6" Slide Room Height
- Living Room LCD HDTV
- Multi Zone Entertainment
- Kenwood Touch Screen Blue Tooth Stereo System
- 15K BTU Air Conditioner
- Bathroom Fantastic Fan
- LED Shower Light
- 12 Gallon Gas/Electric/DSI Water Heater
- Washer/Dryer Prep in Cargo Area
- Retractable Hid-N-Screen Wall
- Heated Garage
- Dovetail Storage Box (AMP Series only)
- 5/8" Tongue and Groove Plywood Floor

Exterior Standards

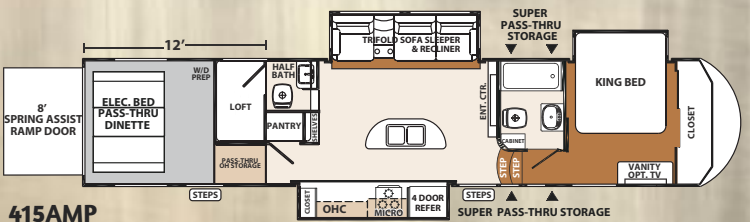
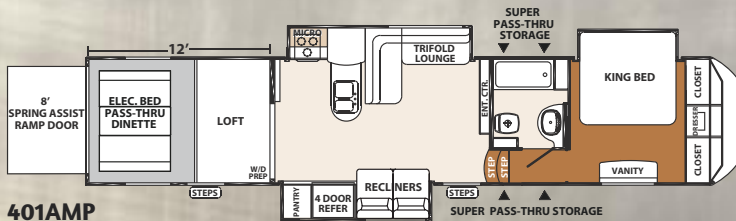
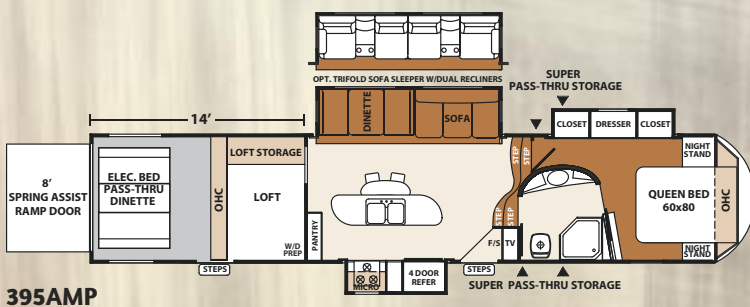
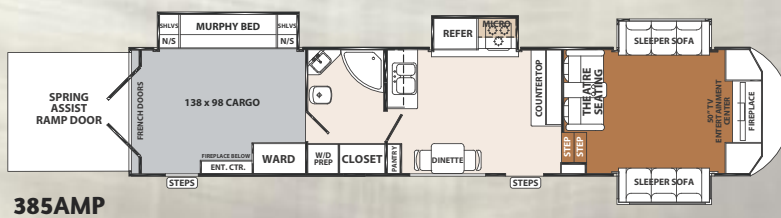
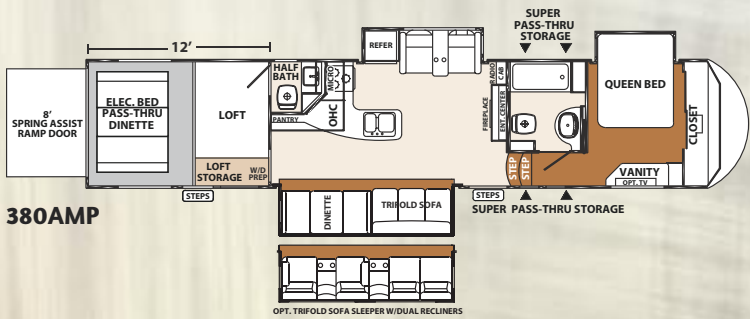
- Front Hydraulic Landing Gear
- Vacuum-Bonded Aluminum Framed Construction
- Gel Coated Sidewalls
- Gel Coat Radius Front Cap with LED Lights
- Exterior LED Brake Lights and Marker Lights
- 7,000 lb. E-Z Lube® Dexter Axles
- NitroFill Radial Tires
- Convenience Center for Utilities
- 50 AMP Service
- 100 AMP Converter
- Exclusive Hitch Pin Cover
- 5,000 lb. Flush Mount Steel Reinforced Tie Downs
- Generator Ready with Fuel Tank – 18 Gal.
- Ultra View Frameless Windows
- Electric Awning with LED Lights
- Strut Assisted Entry Doors
- Slam Latch Baggage Doors
- Premium Ramp Door Compression Keyed Locks
- Bolted to Frame Fuel Tanks
- Collapsible Exterior Ladder
- Large Assist Handles on all Entry Doors
- Reverse Activated Rear Flood Lights
- Hydraulic Flush-Floor Slide (Main slide)
- Black Laminated Slide-Out End Walls
- Satellite Prep
- Hot/Cold Outside Shower
- Enclosed Termination Values
- 30# LP Tanks



Standard Graphics

Thunderbolt Fifth Wheels

Model	Hitch Weight	Ship Weight	Cargo Capacity	Ext. Length	Ext. Height	Ext. Width	Fresh Water	Grey Water	Black Water
300X12HP	1858	10454	3404	38' 0"	13' 4"	102"	100 gal.	64 gal.	32 gal.
340X12HP	2640	11618	4963	38' 0"	13' 4"	102"	100 gal.	64 gal.	32 gal.
350X12HP	2991	12751	4181	39' 6"	13' 4"	102"	100 gal.	64 gal.	32 gal.
350X14HP	2861	13791	4150	41' 6"	13' 4"	102"	100 gal.	64 gal.	32 gal.
35X12HP	2094	13001	4999	39' 11"	13' 4"	102"	100 gal.	64 gal.	54 gal.
386X12HP	2435	13028	4972	42' 4"	13' 4"	102"	100 gal.	54 gal.	54 gal.
40X12HP	2383	12447	5553	41' 9"	13' 4"	102"	100 gal.	54 gal.	108 gal.
380AMP	2323	13475	4525	42' 3"	13' 4"	102"	150 gal.	54 gal.	108 gal.
385AMP	2543	14549	6392	42' 2"	13' 4"	102"	150 gal.	108 gal.	140 gal.
395AMP	2647	14236	3764	42' 2"	13' 4"	102"	150 gal.	108 gal.	54 gal.
401AMP	3473	14533	6408	42' 3"	13' 4"	102"	150 gal.	108 gal.	54 gal.
415AMP	2331	13719	4281	42' 1"	13' 4"	102"	150 gal.	100 gal.	108 gal.



Actual towing capacity is dependent on your particular loading and towing circumstances, which includes GVWR, GAWR and GCWR, as well as adequate trailer brakes. Please refer to the Owners Manual of your vehicle for further information. All illustrations and specifications contained in this literature are based on the latest product information at the time of publication. Forest River, Inc. reserves the right to make changes in prices, colors, materials, equipment and specifications at any time, without notice, and assumes no responsibility for any error in this literature.

All units are shipped F.O.B. point of manufacture. ©2014 Forest River, Inc. XLR 1/14

Mandatory Options

- **Lightning Package** – Front Cap LED Strip Lighting, Kenwood Touch Screen AM/FM Bluetooth Stereo with Subwoofer, 4 Kicker Speakers, Dyson Cordless Vacuum, Gel Memory Foam Mattress, MOR/ryde Power Cord Spooler, 7,000# Dexter Axles, 7'6" Main Slide Height, Wide Stance Frame Upgrade, Spare Tire, Hydraulic Auto Level System Prep, Raised Panel Refrigerator Front, Stainless Steel Backsplash, Satellite Prep
- 5.5 Onan CARB EVAP Generator
- Electric Bed with Pass-through Dinette

Optional Equipment

- **Extreme Weather Package** – Dual Pane Windows, 12V Heated Holding Tanks, Ducted Heat and Radiant Roof/Floor/ Slide Out Floor Insulation (R-38 @ 80° F Radiant Technology)
- **X-Tended Living/ Recreation Package** – Three Season Patio Door IPO Hid-N-Screen, Plush Surged Carpet, 26" Fireplace with Mantle, 32" LED TV
- Garmin RV 760 with Back-up Camera
- 12 Volt/160 Watt Solar Kit
- Mobile Fuel Station with Fuel Tank (30 gallon)
- Full Slide Dual Recliners with Trifold Sofa & Table
- Free Standing Table and Chairs
- Theater Seating IPO Sofa
- Second Air Conditioner (Bedroom or Cargo Area)
- Bedroom TV with Exterior Bracket
- 8 Function Wireless Remote with Touch Screen Control
- Plush, Removable Cargo Carpet Kit
- VIP Party Deck with Awning
- Cargo Shower Upgrade (40X12HP, 415AMP)
- Overhead Storage IPO Loft (Select models)
- Hydraulic Auto Level Up System
- Second Power Awning with LED Lights (N/A 300X12)



Why XLR Thunderbolt?

Thunderbolt toy haulers are bold, luxurious and loaded for adventure. Floorplans are carefully planned to create plush, well appointed, living spaces that flow from room-to-room with contemporary appeal. With double and triple slide-outs, 12' and 14' garages, and a 102" widebody design with vacuum bonded aluminum construction, the choice of rock-solid configurations is up to you.



PRE-DELIVERY INSPECTION FACILITY

20,000 square feet of quality assurance. The bare essentials for a premium product. This state-of-the-art facility gives immediate daily feedback to production for quality assurance in every unit built.



Forest River, Inc. encourages our customers to purchase their Forest River products from a local dealership whenever possible for the following reasons:

- 1) Forest River, Inc. dealers are independently owned and operated businesses so priority service and scheduling is at their discretion and is often provided to customers that purchased their unit at that dealership.
- 2) Purchasing locally allows customers to establish meaningful relationships with a dealer, enhancing the RV experience through assistance with product questions, user tips or RV regulations for your state or country, and much more!
- 3) Canadian customers must meet requirements to bring an RV purchased out of the country to their home. These requirements may involve additional inspections and certifications, taxes and fees. Your local Canadian Dealer is a professional at meeting these requirements.
- 4) Scheduling timely warranty repairs and adjustments through a local dealership provides far greater flexibility and convenience to you, the customer!

It is the goal of Forest River, Inc. that all of our RV owners fully enjoy the RV experience and that customer satisfaction meets or exceeds their expectations!

24/7 EMERGENCY ROADSIDE ASSISTANCE

For a worry-free ownership experience

Forest River includes one year of Coach-Net RV Technical & Roadside Assistance with each RV purchase. Whether new to the RV lifestyle or an experienced RV enthusiast, Forest River owners have 24/7 access to technical, operational and emergency road service coverage throughout the US & Canada. Coach-Net's fast, dependable service is just a phone call away.

Coach-Net®

RV Technical & Roadside Assistance



Learn More

Scan this barcode using a QR Reader on your smart phone to learn more about Forest River.



A Berkshire Hathaway company.

CHECK US OUT ON:

XLR THUNDERBOLT

FOREST RIVER

2421 Century Drive ■ Goshen, IN 46526
Phone: 574-975-0279 ■ Fax: 574-343-5909

E-mail: XLRinfo@forestriverinc.com
www.forestriverinc.com/XLR
www.forestriveraccessories.com

Your XLR Thunderbolt Dealer