



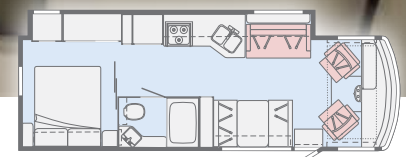
**VISTA**

**WINNEBAGO**





On the Cover: 29VE Scarlet Graphics  
Interior: 29VE Pinnacle with Coffee-Glazed Vienna Maple Cabinetry



This brochure features the Vista 29VE Floorplan

Stepping up to  
Class A living  
has never  
been easier

Designed, engineered, and built to our legendary quality standards, the Winnebago® Vista® lets you enjoy the integrated layout of a Class A motorhome at a very advantageous price point. With a long list of standard and available features – including MCD roller shades, LED lighting, Primera®-covered furnishings, powered patio awning with LED light strip, and a new

powered front shade – your Vista is ready to take you practically anywhere in comfort and style.

Four slideout-equipped floorplans mean you can select the perfect Vista for your family's size and needs, while the available powered StudioLoft™ bed up front provides added sleeping capacity.



# Vista | Lounge

With plenty of Primera®-covered seating (including swivel cab seats), the Vista's spacious lounge is an ideal gathering place at day's end. The large dinette is perfect for games, while the satellite-ready 39" HDTV can make any night movie night. Tinted windows with MCD blackout roller shades put both great visibility and privacy at your fingertips.



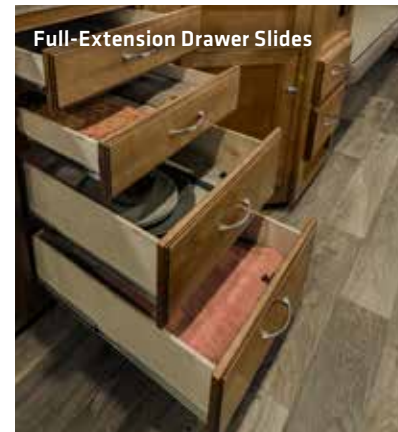






# Vista | Galley

The fully equipped Vista galley has everything you need to feed the troops. The two-door refrigerator/freezer keeps things cool, while the three-burner glass top range with oven and the microwave handle cooking duties. The stainless steel double sink offers plenty of room for cleanup. Two convenient pantries (29VE) make it easy to stock up for the trip.



Every Vista features a walkaround queen (29VE, 31BE) or king (27PE, 32YE) bed with nightstand or bedside storage. An available HDTV helps turn the master bedroom into a cozy retreat. Additional sleeping options abound, thanks to the comfortable sofa/bed, available powered StudioLoft™ bed, and bunk beds in the 31BE. A skylight makes the spacious bath seem even roomier, and a genuine textured glass shower door (the 27PE has a retractable screen instead) adds an extra touch of luxury.







Settle into the Vista cab and take command. Comfortable Primera cab seats feature two-position armrests, lumbar support, and multi-adjustable slide/recline/swivel functions for ideal comfort on the road or in camp. The rearview monitor system, which includes a 6.2" LCD color touch screen monitor, Bluetooth®, and rear color camera, (available sideview color cameras) is compatible with Apple® and Android® devices.





Powered Patio Awning



The Vista makes outdoor living easy. Large lighted storage compartments keep your toys organized and close at hand. The powered patio awning with LED lighting provides shade and shelter at the touch of a button, while the available entertainment center with 32" HDTV and speakers (39" HDTV on the 29VE) lets you take in a movie while you're enjoying the breeze.



Exterior Entertainment



Exterior Service Center

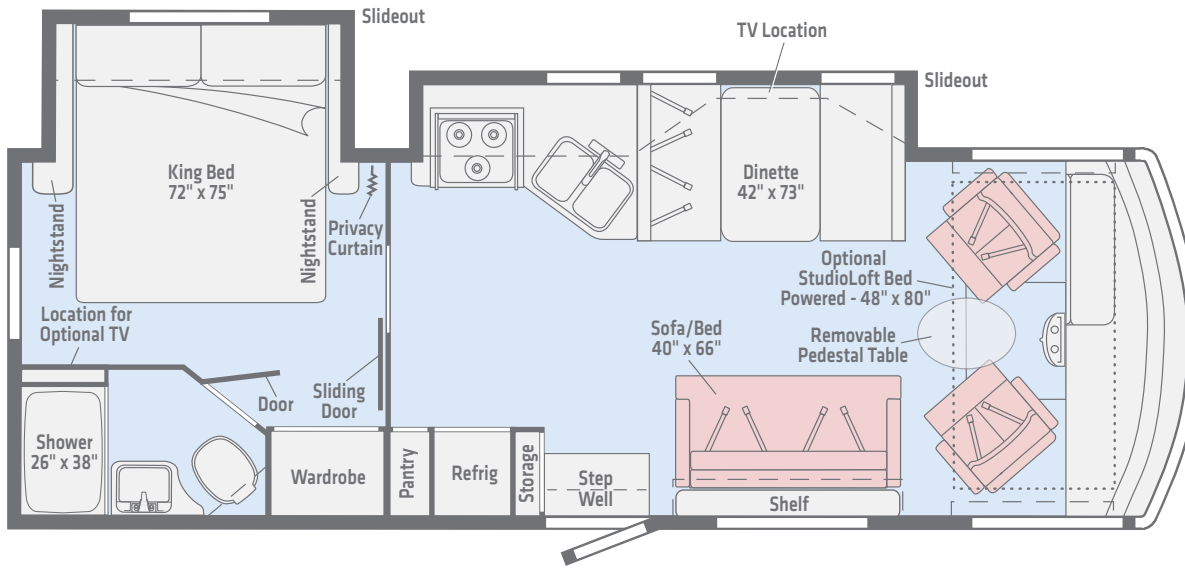


Exterior Storage



# 27PE

This double-slideout floorplan features a walkaround king bed as well as a large galley and lounge area.

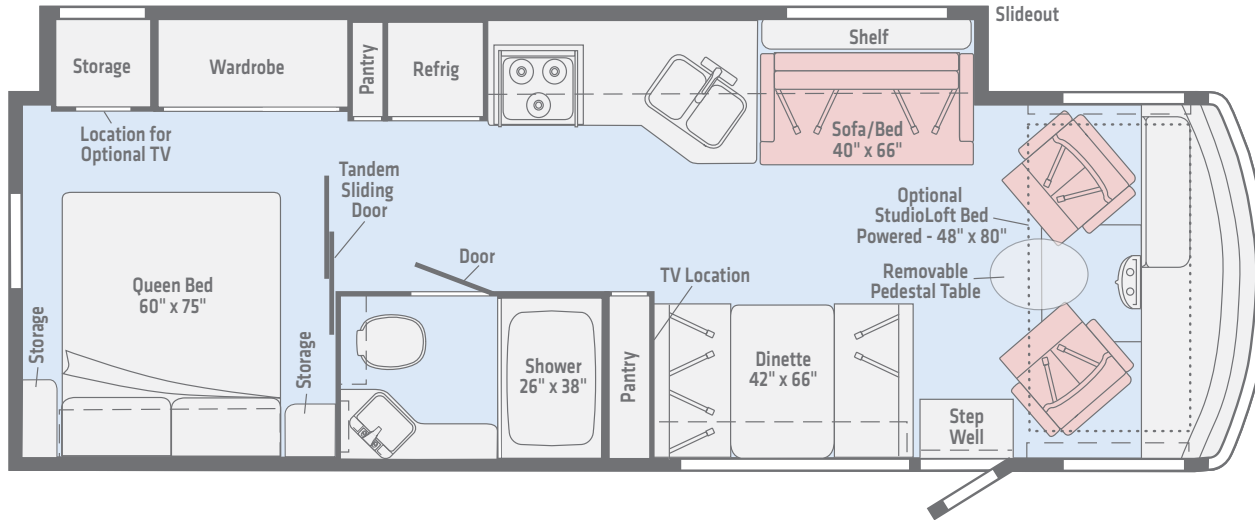


Length 28'8"  
 Ext. Storage (cu. ft.) 133  
 Seating 6

*Dimensions shown are for sleeping and shower space only and may vary due to styling differences. Dashed lines denote overhead storage areas. Floorplans and specifications are also available online at [WinnebagoInd.com](http://WinnebagoInd.com).*

# 29VE

A full-wall slideout adds extra room inside, while the available exterior kitchen and entertainment center make outdoor living even more enticing.



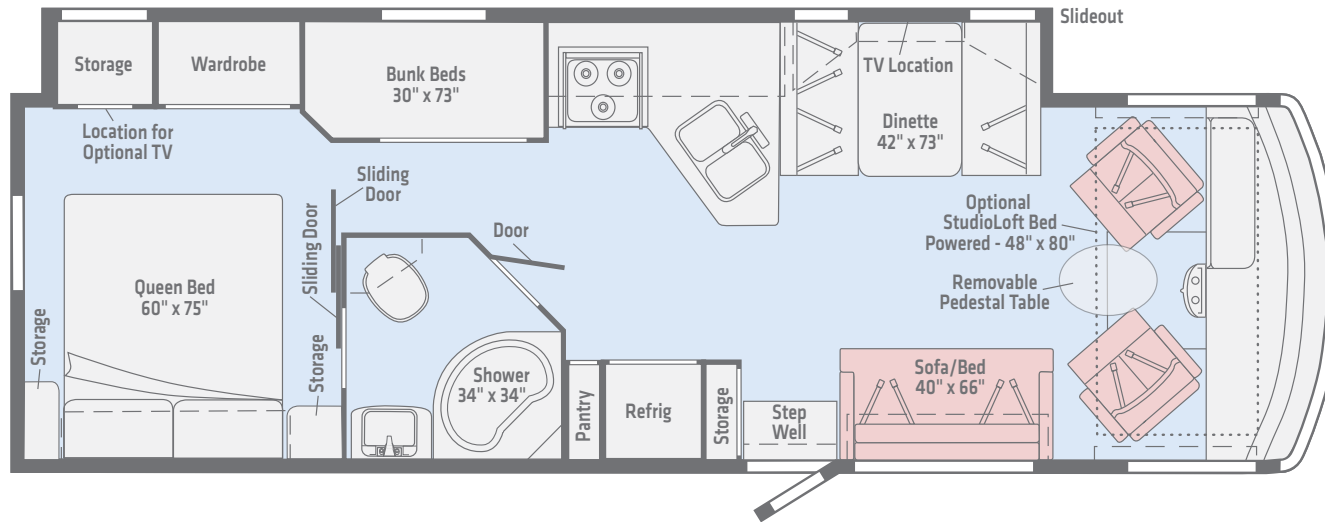
**Length 30'3"**  
**Ext. Storage (cu. ft.) 145**  
**Seating 7**

*Dimensions shown are for sleeping and shower space only and may vary due to styling differences. Dashed lines denote overhead storage areas. Floorplans and specifications are also available online at [WinnebagoInd.com](http://WinnebagoInd.com).*



# 31BE

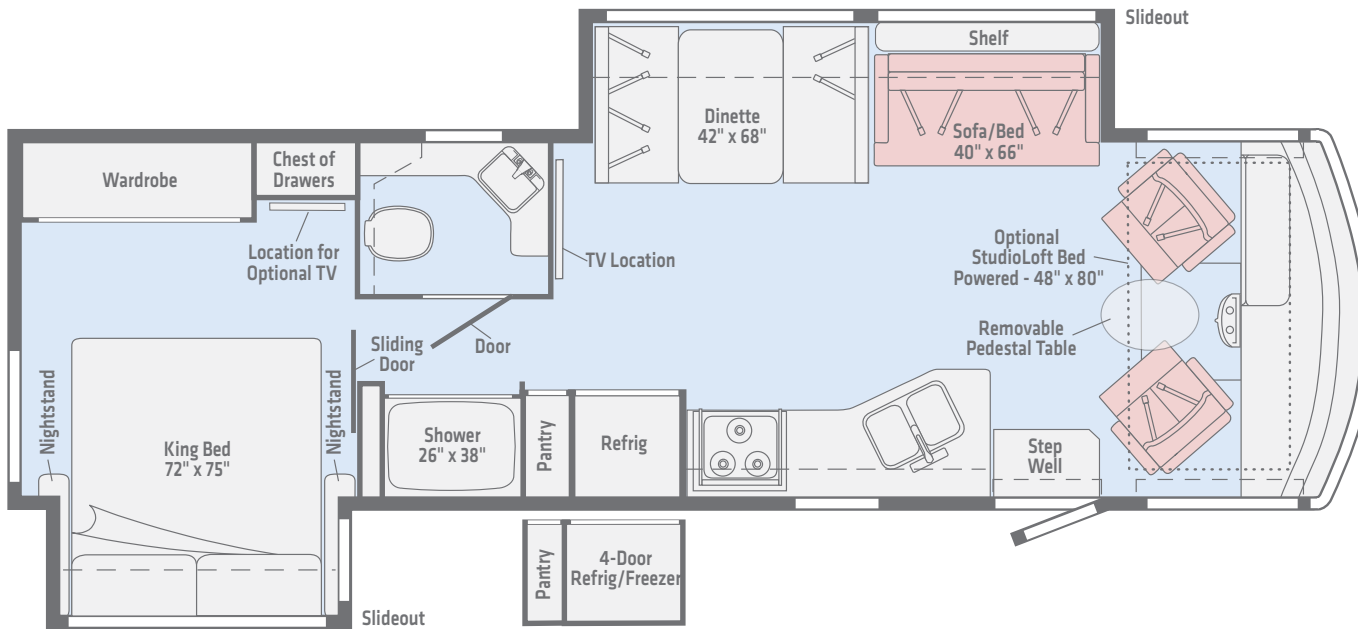
Sleeping options galore, including bunk beds and the available StudioLoft bed, make this full-wall slideout floorplan a favorite with families of all sizes.



**Length** 32'3"  
**Ext. Storage** (cu. ft.) 147  
**Seating** 7

*Dimensions shown are for sleeping and shower space only and may vary due to styling differences. Dashed lines denote overhead storage areas. Floorplans and specifications are also available online at [WinnebagoInd.com](http://WinnebagoInd.com).*

# 32YE



Primera



Vinyl

**Length** 32'11"  
**Ext. Storage** (cu. ft.) 124  
**Seating** 7

*Dimensions shown are for sleeping and shower space only and may vary due to styling differences. Dashed lines denote overhead storage areas. Floorplans and specifications are also available online at [WinnebagoInd.com](http://WinnebagoInd.com).*



# Vista | Exterior Graphics

Choose from two Deluxe Graphics packages.



**Deep Sea**  
DELUXE GRAPHICS



**Scarlet**  
DELUXE GRAPHICS

## Inspire



Primer



Primer Accent



Feature Fabric



Vinyl Flooring



Bedspread



Wall Board



Thermoform Countertop



Backsplash

## Wood



Coffee-Glazed Vienna Maple



Coffee-Glazed Honey Cherry

Winnebago® reserves the right to change décor materials and specifications without notice or obligation.



## Pinnacle



Primer



Primer Accent



Feature Fabric



Vinyl Flooring



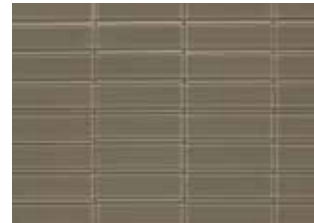
Bedspread



Wall Board



Thermoform Countertop



Backsplash

## Wood

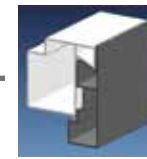
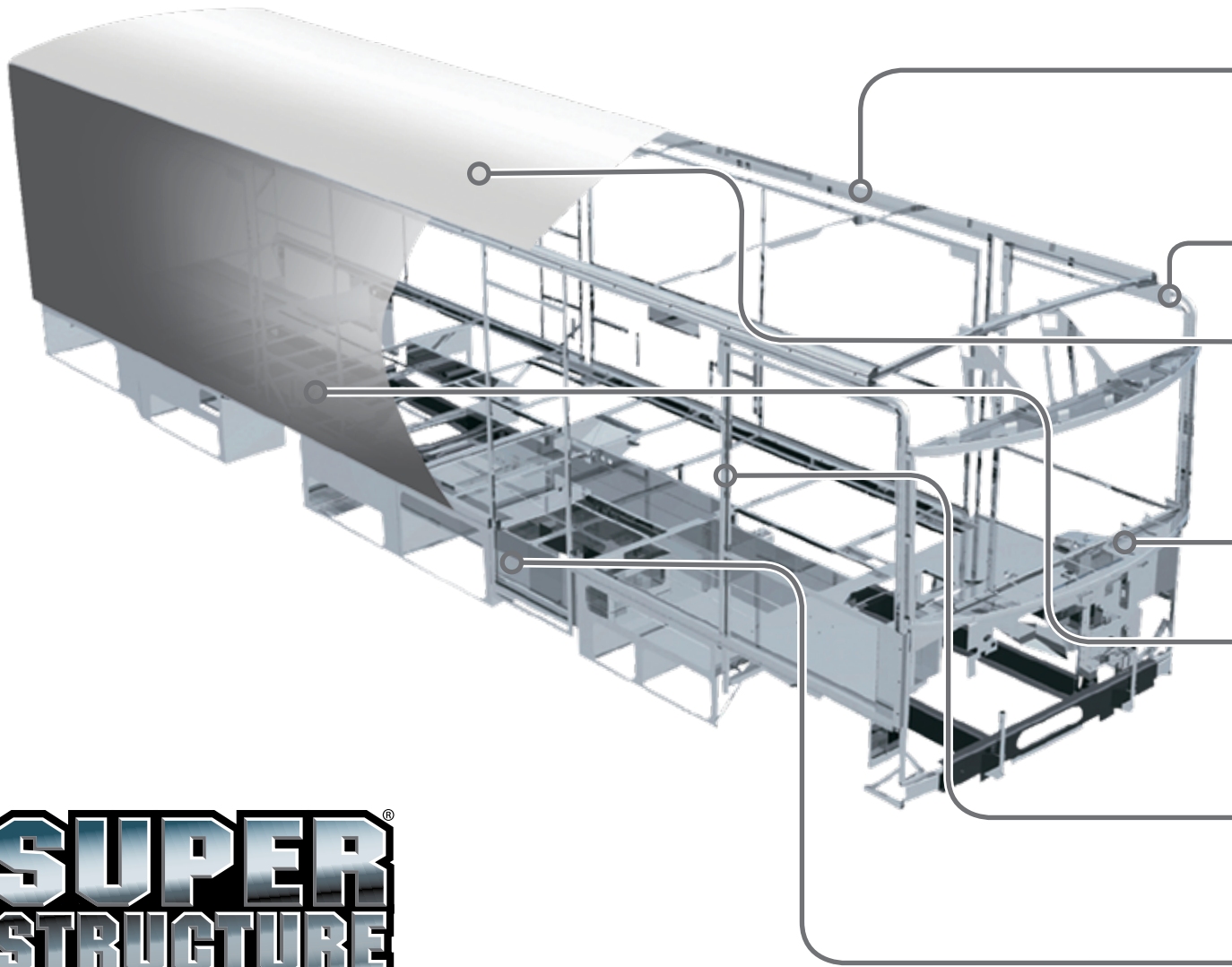


Coffee-Glazed Vienna Maple



Coffee-Glazed Honey Cherry

Winnebago® reserves the right to change décor materials and specifications without notice or obligation.



**Interlocking Joints** Specially engineered interlocking joints connect the floor, sidewalls, and roof where competitors often rely on simple screws to bear the weight.



**Laser-Cut Tubing** Precision laser cutters create precise joints in structural steel that are stronger and require less welding.

**Fiberglass Roof** The one-piece fiberglass roof is backed by a 10-year limited parts-and-labor roof skin warranty.

**Solid Framework** Structural extruded aluminum creates an extremely strong and solid frame.

**Thermo-Panel® Sidewalls** By layering fiberglass and high-density block foam insulation with welded aluminum support structures, we create some of the industry's strongest, most durable, and lightweight sidewalls.

**Embedded Steel** Metal substructures embedded into the sidewall provide solid attachment points to keep cabinets and appliances mounted securely in place.

**E-coating** An electrodeposition coating helps protect critical steel components.

**SUPER  
STRUCTURE**

BUILT TO LAST

From our smallest Class C coach to our largest diesel-pusher, coaches are built to Winnebago's legendary SuperStructure® construction design. It's a process developed and refined over more than 60 years of building some of the strongest, most durable coaches in the industry.



**Kenny and Sabrina Phillips**

Several years ago, it seemed like the only time Kenny and Sabrina really had together was on vacation. So Sabrina, a pulmonary/critical care physician who travels to different locations for work, and Kenny, a small business owner, decided to downsize and simplify.

Kenny sold his business and they became full-time RVers in their Winnebago Vista® LX.

As they put it, “We have laughed, loved, and experienced more in the last 12 months living in our Winnebago than we have in the last nine years.”

You can learn more about Sabrina and Kenny at [WinnebagoLife.com](http://WinnebagoLife.com). You'll also find hundreds of other great stories from GoLife's outstanding contributors along with how-to articles, gear reviews, RVing tips, and much more.



To learn more about the Phillips' adventures, visit:

**GoLife**

[WinnebagoLife.com/about](http://WinnebagoLife.com/about)





Weights & Measures	27PE	29VE	31BE	32YE
<b>Length</b>	28'8"	30'3"	32'3"	32'11"
<b>Exterior Height<sup>1</sup></b>	12'2"	12'2"	12'2"	12'2"
<b>Exterior Width<sup>2</sup></b>	8'5.5"	8'5.5"	8'5.5"	8'5.5"
<b>Exterior Storage<sup>3</sup> (cu. ft.)</b>	133	145	147	124
<b>Awning Length</b>	19'	17'	19'	17'
<b>Interior Height</b>	6'8"	6'8"	6'8"	6'8"
<b>Interior Width</b>	8'0.5"	8'0.5"	8'0.5"	8'0.5"
<b>Freshwater Tank Capacity<sup>4</sup> (gal.)</b>	51	70	70	64
<b>Water Heater Capacity (gal.)</b>	6	6	6	6
<b>Holding Tank Capacity - Black/Gray<sup>3</sup> (gal.)</b>	50/45	40/61	43/59	41/57
<b>LP Capacity<sup>5</sup> (gal.)</b>	18	18	18	18
<b>Fuel Capacity (gal.)</b>	80	80	80	80
<b>GCWR<sup>6</sup> (lbs.)</b>	23,000	23,000	23,000	23,000
<b>GVWR (lbs.)</b>	18,000	18,000	18,000	18,000
<b>GAWR - Front (lbs.)</b>	7,000	7,000	7,000	7,000
<b>GAWR - Rear (lbs.)</b>	12,000	12,000	12,000	12,000
<b>Wheelbase</b>	178"	190"	208"	208"
<b>Seating Capacity</b>	6	7	7	7

## Optional Package Upgrade

**Tailgate Package** refrigerator, 3-drawer cabinet, LED lights, portable grill w/folding stand, Quick-Connect LP hose, stainless steel sink, ice chest with drain plug, silverware tray, wall-mounted bottle opener, garbage bag holder, paper towel holder (29VE, requires ordering the 1000-watt inverter option)

**Cooling Upgrade Package** w/two AC receptacles, 50-amp. power cord, 5,500-watt Cummins Onan® MicroQuiet™ gas generator (29VE, 32YE)

## Ford® F53 Chassis

**3-valve Triton® V10 engine SEFI, TorqShift™ 6-speed automatic transmission** w/tow/haul, 175-amp. alternator

**Hydraulic brakes** w/ABS

**Trailer Hitch**® 5,000-lb. drawbar/500-lb. maximum vertical tongue weight

**7-pin connector**

**Stainless steel wheel liners**

**Automatic hydraulic leveling jacks**

**Rear valve stem extensions**

WinnebagoInd.com

## Cab Conveniences

**Radio/Rearview Monitor System** 6.2" LCD color touch screen monitor, Bluetooth®, rear color camera, (available sideview color camera) Apple® and Android® compatible

**Primera® cab seats** w/two-position armrests, fixed lumbar support, and multi-adjustable slide/recline/swivel

**3-point seat belts**

**Removable utility table**

**Chassis/house battery radio power switch**

**Power steering** w/tilt wheel

**Power mirrors** w/defrost

**Powered MCD blackout front shade**

**Driver/passenger MCD side window shades**

**Driver/passenger snap on vinyl closeout covers**

**Cruise control**

**Map light**

**Dash workstation** w/USB and 12-volt powerpoint

**Motor cover** w/integrated snack tray

**Instrument panel**

## OPTIONAL EQUIPMENT

**Video camera system** w/side view activation from turn signal

## Interior

**39" HDTV**

**Video Selection System**

**Amplified digital TV antenna system**

**Satellite system ready**

**Tinted windows**

**MCD blackout roller shades**

**OnePlace® systems monitor**

**Powered roof vent**

**LED lights**

**Vinyl flooring throughout**

**Entrance assist handle**

**Framed wall mirror** (NA 31BE)

**Sofa/bed** (29VE, 32YE)

## OPTIONAL EQUIPMENT

**Powered StudioLoft™ bed** (w/ladder)

## Galley

**Thermoform countertops** w/decorative backsplash

**2-door refrigerator/freezer** (29VE)

**Large, 2-door refrigerator/freezer** (27PE, 31BE, 32YE)



**Microwave oven** w/touch controls

**3-burner glass top range** w/oven, flush with countertop

**Pantry**

**Stainless steel double sink**

**Powered ventilator ceiling fan**

## OPTIONAL EQUIPMENT

**Large 4-door refrigerator/freezer** w/icemaker, cold water purification system (32YE)

## Bath

**Thermoform countertop** w/decorative backsplash

**Flexible showerhead**

**Textured glass shower door** (NA 27PE)

**Shower door** w/retractable screen (27PE)

**Skylight**

**Toilet** w/foot pedal

**Powered roof ventilator fan**

**Towel rack** mounted inside of door

**Towel bar(s)** (NA 27PE)

**Towel ring(s)**

**Robe hook(s)**

**Tissue holder**

**Linen cabinet** (32YE)

**Medicine cabinet**

**Mirror**

## Bedroom

**King bed** w/foam mattress and storage below (27PE, 32YE)

**Queen bed** w/foam mattress and storage below (29VE, 31BE)

**Bedsread**

**Headboard**

**Bunk beds** w/foam mattresses, mattress covers, and privacy curtain (31BE)

**Powered ventilator fan** (29VE, 31BE)

**Room divider curtain** (27PE)

### OPTIONAL EQUIPMENT

**2 DVD players** w/10.1" LCD monitors and headphones (31BE bunk beds)

**24" HDTV** (29VE, 31BE, 32YE)

**32" HDTV** (27PE)

## Exterior

**Premium high-gloss sidewall skin**

**Automatic entrance door steps and screen door**

**Powered patio awning** w/LED lighting

**Entertainment center** 32" HDTV w/remote and speakers (27PE, 31BE, 32YE)

**Entertainment center** 39" HDTV w/remote and speakers (29VE)

**Front mud flaps**

**Porch light** w/interior switch

**Lighted storage compartments**

**Ladder**

**Entry assist handle**

**PetPal leash tie down**

## Heating & Cooling System

**15,000 BTU air conditioner** w/ChillGrille™

**30,000 BTU low-profile furnace** (NA 32YE)

**35,000 BTU low-profile furnace** (32YE)

## Electrical System

**AC/DC load center, 45-amp. converter/charger**

**30-amp. power cord**

**4,000-watt Cummins Onan® MicroQuiet™ gas generator**

**2 deep-cycle Marine/RV Group 24 batteries**

**Battery disconnect system** (coach)

**Automatic dual-battery charge control**

**Auxiliary start circuit**

**AC duplex receptacle**

**Cable TV input**

**Exterior antenna jack**

**DC receptacles**

**1,000-watt inverter** (29VE, 31BE)

## Plumbing System

**Service Center** colored labels, pressurized city water hookup w/diverter valve, drainage valves, 10' sewer hose

**6-gallon LP water heater** w/electronic ignition

**Heated holding tank compartment**

**Permanent-mount LP tank** w/gauge

**On-demand water pump**

**TrueLevel™ holding tank monitoring system**

**Winterization Package** water heater bypass valve and siphon tube

**LPG accessory connection** (patio) (29VE)

**Water system filtration package**

**Holding tank flushing system** (black tank only)

## Safety

**Child seat tether anchor** (forward facing dinette seat)

**LP, smoke, and carbon monoxide detectors**

**10 BC fire extinguisher**

**Ground fault interrupter**

**High-mount brake lamp**

## Warranty<sup>7</sup>

**12-month/15,000-mile basic limited warranty<sup>8</sup>**

**36-month/36,000-mile limited warranty on structure<sup>8</sup>**

**10-year limited parts-and-labor warranty on fiberglass roof skin<sup>8</sup>**

### FOOTNOTES

- The height of each model is measured to the top of the tallest standard feature and is based on the curb weight of a typically equipped unit. The actual height of your vehicle may vary by several inches depending on chassis or equipment variations. Please contact your dealer for further information.
- Floorplans feature a wide-body design - over 96" In making your purchase decision, you should be aware that some states restrict access on some or all state roads to 96" in body width. Before making your purchase decision, you should confirm the road usage laws in the states of interest to you.
- The load capacity of your motorhome is designated by weight, not by volume, so you cannot necessarily use all available space when loading your motorhome.
- Capacities are based on measurements prior to tank installation. Slight capacity variations can result due to installation applications.
- Capacities shown are tank manufacturer's listed water capacity (W.C.). Actual filled LP capacity is 80% of listing due to overfilling prevention device on tank.
- Actual towing capacity is dependent on your particular loading and towing circumstances which includes the GVWR, GAWR, and GCWR as well as adequate trailer brakes. Please refer to the Operator's Manual of your vehicle for further towing information.
- See separate chassis warranty.
- See your dealer for complete warranty information.

NA Not Available

Not all items available in combination. See dealer for details.

Winnebago's® continuing program of product improvement makes specifications, equipment, model availability, and prices subject to change without notice. Published content reflects the most current product information at time of printing. Please consult your dealer for individual vehicle features and specifications.