

REFLECTION FIFTH WHEELS & TRAVEL TRAILERS

Reflection
By Grand Design

Reflection

A Celebration of Luxury, Value and Towability!



GRAND DESIGN
RECREATIONAL VEHICLES



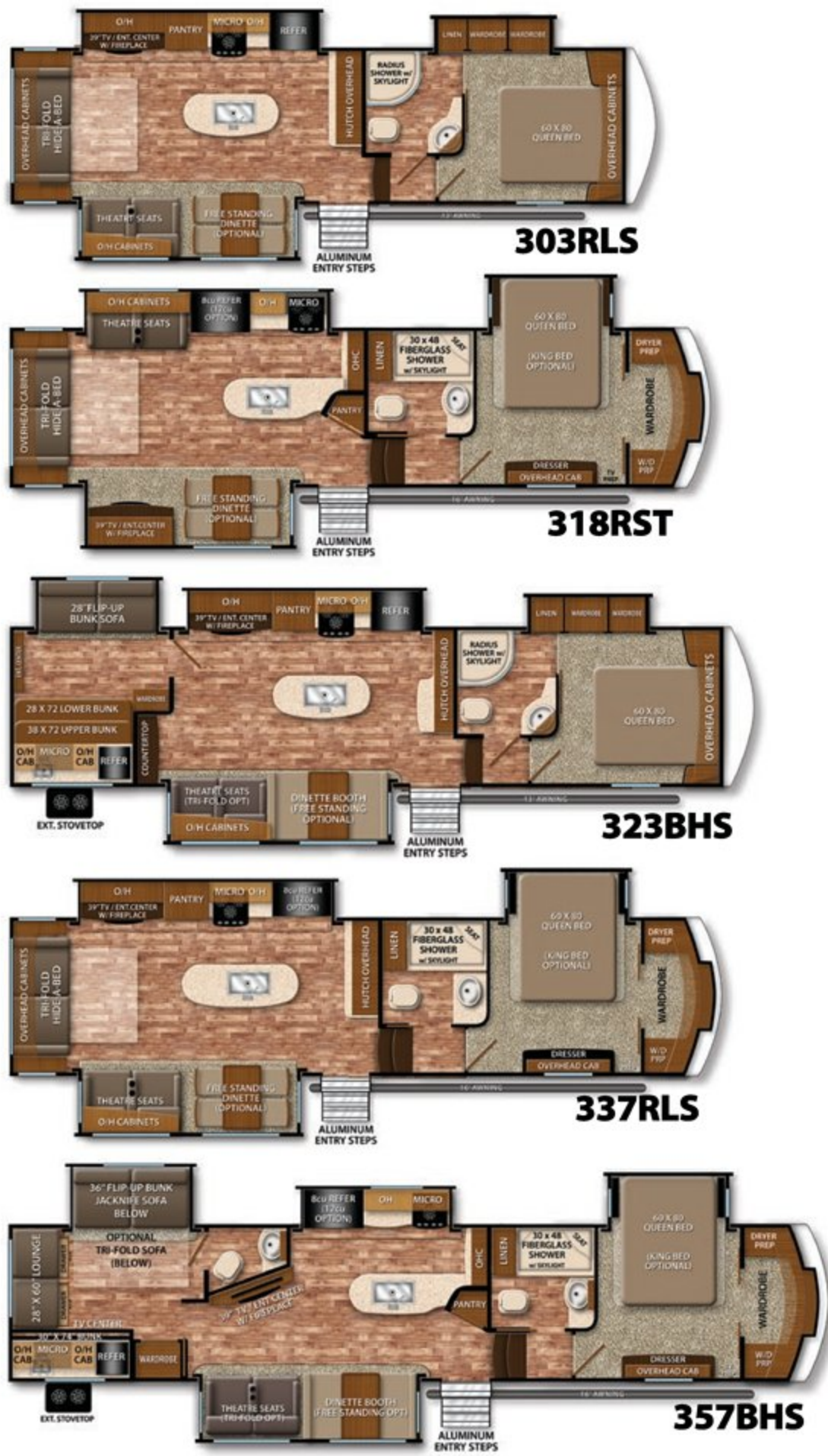
- 1 "Tread Lite" Aluminum Entry Steps—No Rust, No Bind!
- 2 Industry Leading All-in-One Heated Docking Station with EZ Winterization System
- 3 Solid Surface Countertops, Under-Mount Stainless Steel Sink and Hi-Rise Faucet w/Pull Down Sprayer
- 4 Artic Four Seasons Protection Package (R-40 Roof/R-24 Slide Floors/R-9 Walls/R-30 Floor)
- 5 LED Lighting Throughout w/ Motion Sensors (Key Areas)
- 6 Best-in-Class Unobstructed Pass Thru Storage Area with Metal Slam Latch Baggage Doors
- 7 Ductless Flooring Throughout Beauflor
- 8 Taller Slide Rooms with Panoramic Windows
- 9 Hardwood Trim Moldings w/Solid Maple Cabinetry
- 10 Unparalleled Quality-100% of Units Pre-Delivery Inspected at Factory & 3 Year Structural Warranty



	FIFTH WHEELS					SUPER-LITE FW		TRAVEL TRAILERS	
	303RLS	318RST	323BHS	337RLS	357BHS	27RL	29RS	308BHTS	313RLTS
UVW (lbs.)	9,125	10,297	10,708	10,570	12,422	8,013	8,356	8,348	8,596
Hitch Weight (lbs.)	1,660	2,194	1,980	2,090	2,598	1,516	1,476	940	1,146
Length	32' 5"	34' 4"	36' 10"	35' 6"	41' 0"	30' 11"	30' 11"	36' 7"	37' 3"
Height*	12' 0"	12' 6"	12' 0"	12' 6"	12' 6"	12' 0"	12' 0"	11' 4"	11' 4"
Fresh Water (gal.)	60	60	60	60	60	60	60	60	60
Gray Water (gal.)	75	75	75	75	86	75	75	75	104
Waste Water (gal.)	43	43	43	43	86	43	43	43	43

* Optional 2nd AC adds additional height (FW)

FIFTH WHEELS



SUPER-LITE FIFTH WHEELS



TRAVEL TRAILERS



EXTERIOR STANDARDS

- Aerodynamic Front Cap with Max Turn Radius
- Marine Grade LED Hitch Light (FW)
- LED "Night Lights" Under Bedroom Slide (FW)
- One-Touch Automatic Leveling System (FW)
- EQUA-FLEX Rubberized Suspension (FW)
- "Correct Track" Axle Alignment System (FW)
- Aluminum Wheels w/ E-Rated Tires
- 80% Tint Radius Safety Glass Windows
- Battery Kill Switch in Pass Thru Storage Area
- Extended Pin Box (FW)
- 30# LP Bottles (2)
- 30" Radius Entry Door
- Outside Speakers
- Outside Shower
- Factory Installed Roof Ladder
- Under Carriage Spare Tire & Carrier
- High-Capacity Water Pump w/Int & Ext Switch
- "EZ" Winterize Water Heater Bypass Valve
- "EZ" Siphon Fresh Water Fill Feature
- Extra Large Fresh Water Drain Valve

INTERIOR STANDARDS

- Hand Rubbed Maple Cabinet Doors
- Solid Hardwood Drawer Fronts
- Louvered Tread Steps to Bedroom (FW)
- Solid Core Cabinet Stiles
- Predrilled and Screwed Cabinetry
- Ball Bearing Full Extension Drawer Glides
- Tri-Fold Hide-a-Bed Sofa (Model Specific)
- Wall Hugger Theatre Seating
- Deep Overhead Cabinets in Slide Out
- Large Panoramic Slide Room Windows
- Premium Beauflor Flooring w/ 7-Year Warranty
- Ductless flooring Throughout Living Area
- Residential Style Window Treatment
- LED Lighting Throughout w/Motion Sensors (Key Areas)

KITCHEN

- Solid Surface LG Brand Countertops
- Gunstock Fixtures & Hardware
- Deep, Undermount Kitchen Sink
- Residential Style Microwave
- Hardwood Galley Slide Trim Moldings & End Caps
- MaxxAir 12v Fan w/Rain Sensor

BATHROOM

- Neo-Radius Shower Doors (N/A on Bedslides)
- Wide View Skylight Over Shower
- Heat Duct & AC Vents in Bathroom
- Custom Designed Shower Pan & Surround
- Power Vent Fan
- Extra Large Lav Top with Acrylic Sink
- Large Medicine Cabinet with Mirror

BEDROOM

- King Size Wardrobe
- Black Label Pillowtop Mattress
- Oversized Underbed Storage
- Residential Bedspread
- Bedroom Heat Registers
- Closeable A/C Vents
- TV & Cable Prep

CONSTRUCTION

- Gel Coated Tan Fiberglass Exterior
- Residential 5" Truss Rafters (16" O.C.)
- Walk On Roof Decking
- Fiberglass & Thermofoil Roof and Front Cap Insulation
- One-Piece TPO Roof Membrane w/12-Year Warranty
- Easy Access Low Point Drain Valves
- Laminated Aluminum Framed Rear Wall (R-9)
- Laminated Aluminum Framed Side Walls (R-9)
- Laminated Aluminum Framed Roof & End Walls in Slide Rooms (R-9)
- Aluminum Framed Main Floor (R-30)
- Residential Wood Framed Roof (R-40)

POWER PACKAGE (MANDATORY)

- One-Touch® Electric Awning w/LED Light
- One-Touch® Electric Front Stabilizer Jacks
- AM/FM/CD/DVD/Bluetooth Stereo System
- Hi Definition LED Television (Living Area)
- 50 AMP Electrical Service
- Wired & Framed For 2nd A/C in Bedroom
- Detachable Power Cord w/LED Light
- Power Rear Stabilizer Jacks

ENDLESS SUMMER PACKAGE (MANDATORY)

- Residential Cabinetry
- Solid Surface Countertops
- Aluminum "Tread Lite" Entry Steps
- Metal Slam Baggage Doors w/Magna Latch
- 8cu. ft. Double Door Refrigerator
- 17.8 Gal/Hr. Quick Recovery Water Heater
- Porcelain Toilet w/Foot Pedal Flush
- High-Rise Faucet w/Pullout Sprayer
- Universal All-In-One Docking Station
- Black Tank Flush
- Radius Fireplace

ARCTIC FOUR SEASONS PROTECTION PACKAGE

- 35k BTU High Capacity Furnace
- Double Insulated Roof & Front Cap
- Thermofoil Wrapped Frame & Subfloor (Beneath Main Holding Tanks)
- Heated & Enclosed Underbelly
- Ducted Heat to Pass Thru Storage Area (FW)
- Heated & Enclosed Dump Valves
- Zero Degree Extended Season Enjoyment

OPTIONS

- Free Standing Table & Chairs
- Dual Pane Windows
- 12cu. ft. Refrigerator (318RST, 337RLS, 357BHS)
- Tri-Fold IPO Theatre Seating (Bunk Models)
- 2nd A/C Low Profile 13.5k BTU Ducted (FW)
- 2nd A/C 15k BTU Ducted (TT)
- King Bed (Bed Slide Models)



11333 County Road 2

Middlebury, IN 46540

Phone: 574-825-8000

www.GRANDDESIGNRV.com

Because of our commitment to continuous product improvement, Grand Design Recreational Vehicles reserves the right to change components, standards, options, specifications, and materials without notice and at any time. Photos may show optional equipment which may not be included in the standard purchase price of the featured unit. Be sure to review current product details with your local dealer before purchasing.

