

# Outback

*Keystone Super-Lite*



**SUPER-LITE  
TRAVEL TRAILERS**



# Outback

*Keystone Super-Lite*

- A.** Oversized cabinets and drawers increases the storage in the Outback kitchen to levels not seen in most light weights.
- B.** Swivel 24" LCD TV (most models) provides for easy viewing in the living room and bedroom.
- C.** Outback Command Center keeps all unit controls in one easily accessible location.
- D.** The Outback vaulted ceiling adds 4" of interior height



[www.keystone-outback.com](http://www.keystone-outback.com)





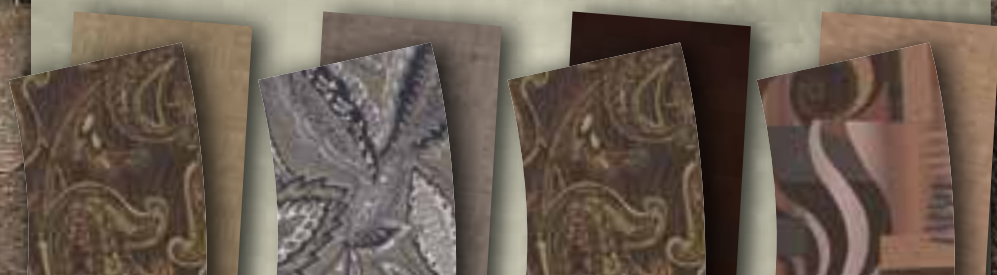
## DECOR Options

TRUFFLE

MOONLIGHT

TEAK

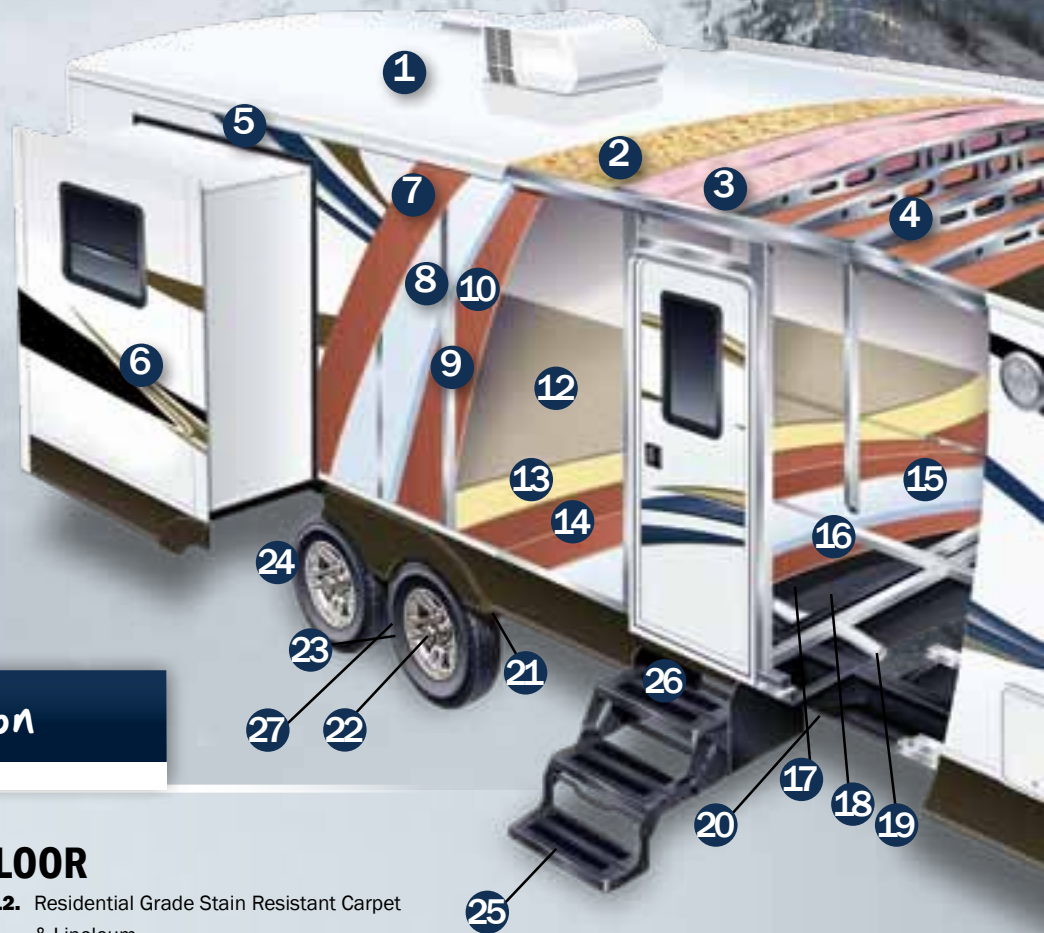
RUSSET



# Outback

Keystone Super-Lite

www.Keystone-Outback.com



## DURABLE Construction

### ROOF

1. Seamless One-Piece EPDM Rubber Roof
2. 3/8" Fully Walkable Wood Decking
3. R-14 Blanket Insulation
4. 5" Radius, Galvanized Steel Roof Trusses
5. Full Length Drip Rail

### SIDEWALL

6. Gel-Coated Fiberglass Exterior
7. 1/8" Luan Wall Backing
8. R-7 Solid Block Foam Insulation
9. 1 1/2" Box Welded Aluminum Frame Walls
10. Interior Decorative Wall Board
11. Gel Coat Molded Fiberglass Front Cap

### FLOOR

12. Residential Grade Stain Resistant Carpet & Linoleum
13. Carpet Pad
14. Double Layer Luan Decking w/ Staggered Seams
15. R-10 Block Foam Insulation
16. Welded Aluminum Floor Joists
17. Bottom Layer Luan Decking
18. Darco Vapor Barrier Wrap
19. One Piece, Polypropylene Enclosed and Heated Underbelly
20. In Floor Residential Ducted Heat

### CHASSIS

21. 6" Powder Coated Steel I-Beam Frame (8" frame models - 277RL and larger)
22. Leaf Spring Suspension System
23. EZ Lube Axles with 10" Electric Brakes
24. 15" Radial Tires
25. 3-Step Entry Mounted to I-Beam Frame
26. Step Light
27. Equa-Flex Rubber Equalizing System



Take your toys in an Outback Kargaroo. The front room doubles as a bunk room and a cargo area. 230 RS shown here.

**KARGOROO**  
by Keystone



11

## IMPORTANT Features

**A.** Enjoy great outdoor cooking with family and friends on our outdoor kitchen (312 BH, 279 RB models only).

**B.** Outside Camp Kitchen (most models), exterior speakers, security lights and a 110 volt outlet are included for your convenience.

**C.** Max Storage offers storage no other brands provide. Perfect for tools, hoses, firewood, etc...

**D.** Outback's all aluminum pass through storage exemplifies our quality construction and allows for maximum storage capacity.

**E.** The Equa-Flex rubber equalizer system completes the task of keeping road shock where it belongs.

**F.** Our heated and enclosed underbelly helps extend the camping season.

**G.** Combined with a one-piece galvanized steel roof truss system, Outback utilizes the most durable, lightest construction techniques available.

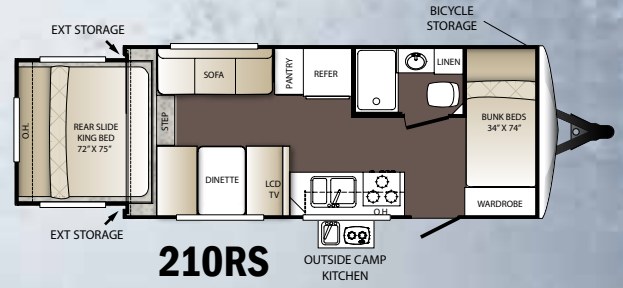
**H.** Floor lighting offers safe and convenient night time lighting.



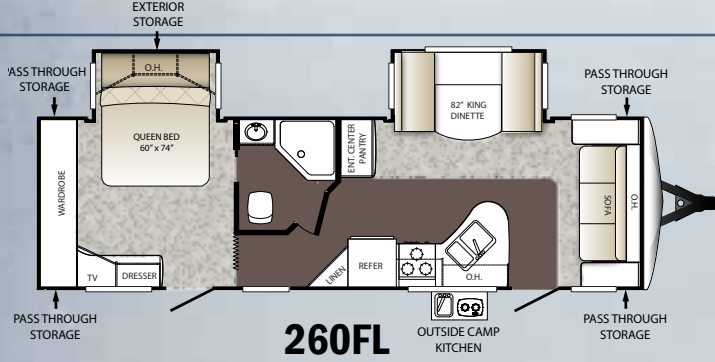
# Outback

Keystone Super-Lite

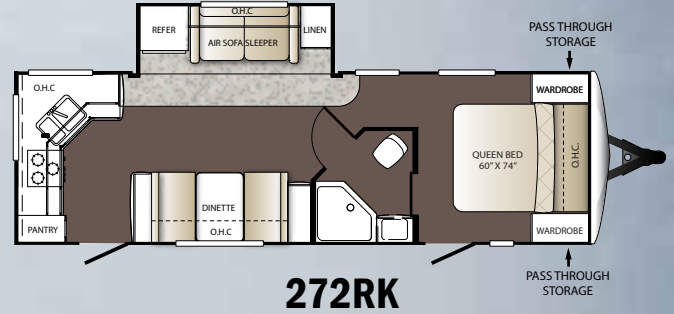
www.Keystone-Outback.com



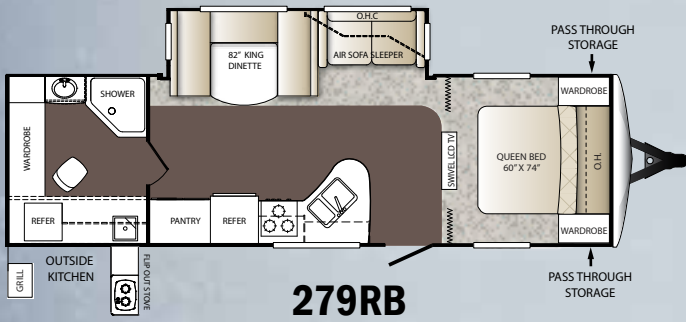
**210RS**



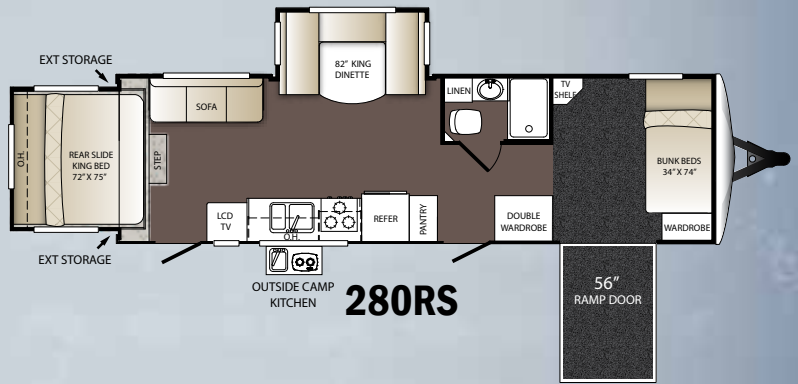
**260FL**



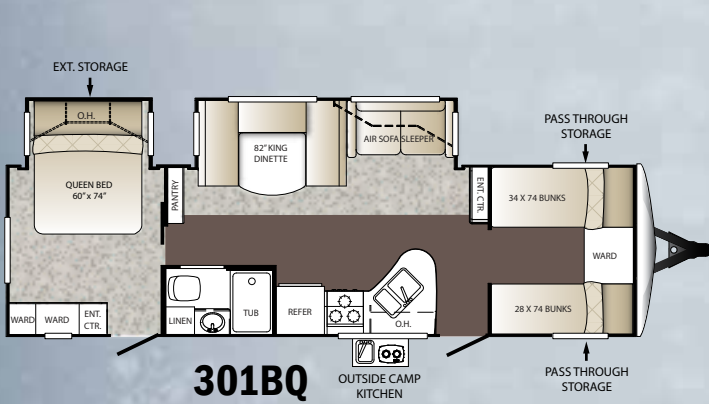
**272RK**



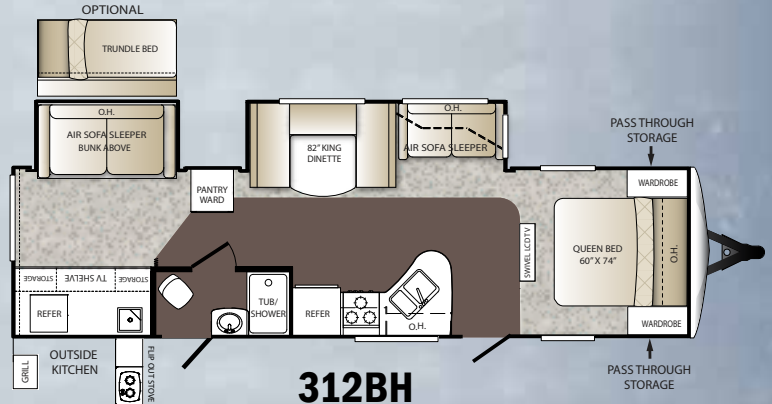
**279RB**



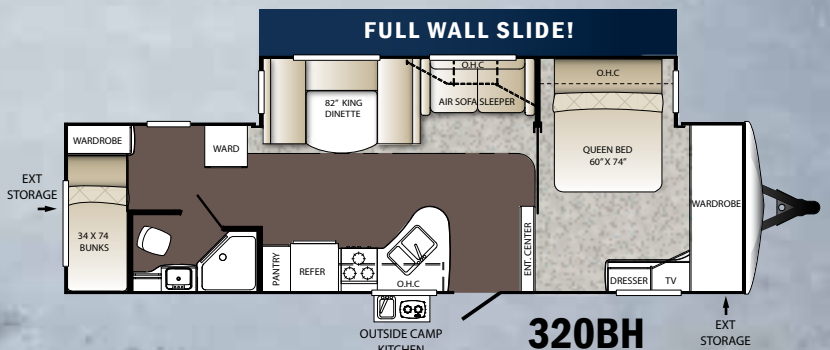
**280RS**



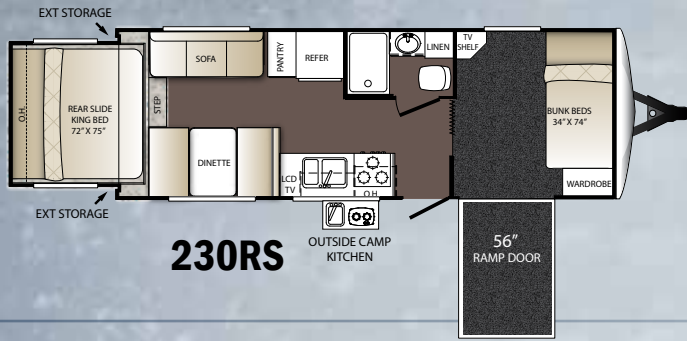
**301BQ**



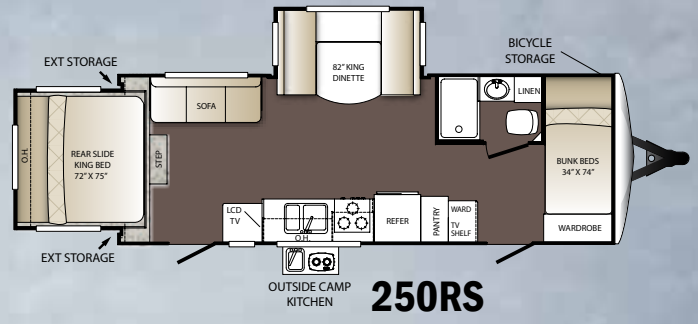
**312BH**



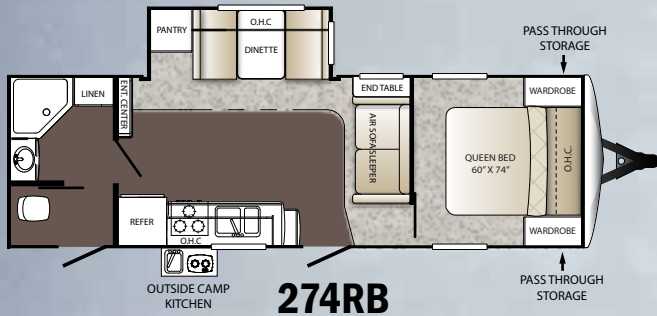
**320BH**



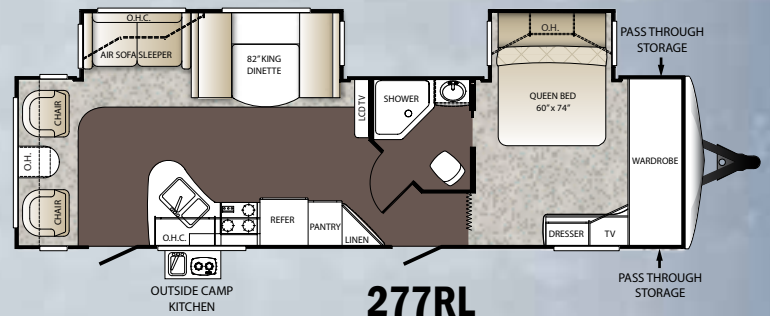
**230RS**



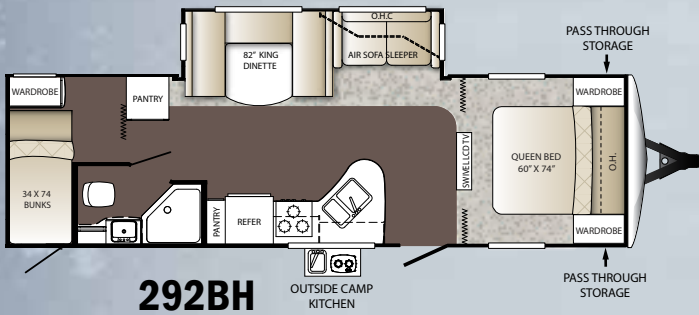
**250RS**



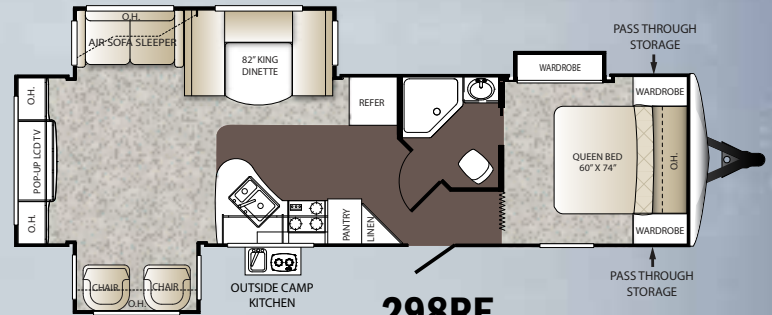
**274RB**



**277RL**



**292BH**



**298RE**

## WEIGHTS and Measurements

	210RS	230RS	250RS	260FL	272RK	274RB	277RL	279RB	280RS	292BH	298RE	301BQ	312BH	320BH
SHIPPING WEIGHT	4870	5350	5915	6641	5945	5940	7402	6535	6597	6505	7443	7178	7579	7565
CARRYING CAPACITY	2680	2200	1635	1559	1855	1860	1198	1665	1603	1695	1557	1822	1421	1435
HITCH WEIGHT	550	590	640	820	685	645	870	890	725	850	795	760	765	1170
EXTERIOR LENGTH	22' 10"	27' 0"	27' 6"	31' 9"	30' 4"	30' 4"	34' 10"	31' 9"	32' 1"	32' 9"	35' 2"	33' 6"	35' 5"	35' 6"
EXTERIOR WIDTH	96"	96"	96"	96"	96"	96"	96"	96"	96"	96"	96"	96"	96"	96"
EXT. HEIGHT - A/C TOP	10' 11"	10' 11"	10' 11"	10' 11"	10' 11"	10' 11"	10' 11"	10' 11"	10' 11"	10' 11"	10' 11"	10' 11"	10' 11"	10' 11"
AWNING	14'	19'	19'	19'	20'	18'	19'	17'	19'	19'	18'	19'	18'	18'
LPG CAPACITY (LBS.)	60	60	60	60	60	60	60	60	60	60	60	60	60	60
FRESH WATER (GAL.)	43	43	43	43	43	43	43	43	43	43	43	43	43	43
WASTE WATER (GAL.)	30	30	30	30	30	30	30	30	30	30	30	30	30	30
GRAY WATER (GAL.)	30	30	30	30	60	30	60	60	60	60	60	60	60	60



VIEW INTERIOR SNAPSHOT PHOTOS AT  
[www.keystone-outback.com](http://www.keystone-outback.com)

## STANDARDS

### Living Area

- Dinette cup holders
- Upgraded furniture package
- Outback command center
- Deluxe walnut and ash cabinetry
- King U-shape dinette, with 42" slide out drawer (most models)
- 36" flush floor slides
- Large panoramic windows
- Pre-drilled and screwed cabinetry
- Custom designed box valance with lambrequins
- Linoleum flooring
- Large wood side drawers with steel guides
- Water soil, stain resistant fabrics
- Large overhead cabinets
- Residential air bed sleeper sofa with storage drawer (most models)\*
- 24" LED HDTV\*
- 32" LCD HDTV (298 & 320 only)
- Pleated shades\*
- Decorative wall lights\*
- Vaulted ceiling
- Floor lights (2)

### Kitchen

- 60/40 deep sink with 3" drains
- Trash can storage\*
- Two door 6 cu. ft. refrigerator
- High-rise faucet
- Utensil tray
- 3 burner range with oven\*
- Microwave
- Upgraded laminate countertops

### Bedroom

- Deluxe innerspring mattress
- TV hook-up
- Jalousie windows for maximum ventilation
- Residential bedspread
- Deluxe headboard
- His and her lights
- Bedroom speakers
- 2 Full length wardrobes
- Recessed cubby storage w/110 volt outlets (most models)

### Bathroom

- Power roof vent
- Skylight over tub
- Porcelain foot flush toilet
- Laundry hamper
- Tub surround\*
- Garden shower (260, 272, 274, 277, 279, 292, 298, 320)
- Deluxe medicine cabinet
- Large linen closet (most models)

### Appliances

- AM/FM/CD stereo with DVD player and MP3 hookup (N/A 210, 230, 250, 280)
- Two door 6 cu. ft. refrigerator
- 3 burner range with oven\*
- Six gallon gas/electric DSI water heater by pass with 16.2 gallons per hour "quick recovery"\*
- 13,500 BTU AC wall thermostat
- 30,000 BTU furnace
- Microwave

### Exterior Standards

- Molded fiberglass front cap
- Black framed tinted jalousie safety glass windows
- Black tank flush
- Extra large baggage doors, 1" thick with continuous hinge and rubber D-seal
- Assist entry grab handle
- Extended drip caps and full length drip rail
- Two security lights (one on each side)\*
- Porch light
- Hitch light
- Step light
- Weather encapsulated body trim
- Exterior 120V receptacle
- Heated enclosed underbelly including tanks and valves
- LP tank cover
- Automotive style fender skirts
- Double welded dual battery brackets
- Exterior TV mount with cable hook up (N/A 298RE)
- Exterior speakers
- Easy lube axles
- Outside camp kitchen\*
- Exterior quick connect LP hook-up
- Stabilizer Jacks (4)
- LED Hitch lights
- Satellite ready
- Braced for rear ladder
- Max storage compartment (tool box)

### Walls – Construction

- Welded aluminum walls with R7 insulation
- Solid block foam insulation

### Roof

- 5" Radius, vaulted galvanized steel, tapered trusses on 16" centers
- 3/8" roof decking
- One-piece EPMD rubber roof
- R14 blanket insulation

### Floor

- 2" welded aluminum laminated floor
- R10 block foam insulation
- Wrapped vapor barrier
- Polypropylene enclosed heated underbelly encloses tanks and valves

### Chassis

- Leaf spring equalizing suspension system
- Powder coated I-beam
- EZ lube axles
- 10"- electric brakes
- 15" radial tires\*
- 15" spare tire, carrier & cover\*
- Aluminum rims\*
- Equa-Flex™ Suspension System
- Rear bike receiver hitch

### Utilities

- 55-amp converter
- 30 lbs. LP bottles with auto changeover
- TV antenna with booster, cable TV
- 30-amp shore power line
- LP leak detector
- Smoke detector
- Carbon monoxide detector\*
- Fire extinguisher
- Tinted safety glass windows
- Break-away switch
- Safety chains (TT only)
- Manual slide backup on all electric slide outs
- 12 Volt battery disconnect

## OPTIONS\*

- Designer Package
- Comfort Package
- Carbon monoxide detector
- Tub surround
- Outside camp kitchen
- RVIA
- Radial Tires
- 15" spare tire, carrier, and cover
- 6 gal. gas/electric DSI water heater by pass with 16.2 quick recovery
- Stabilizer jacks (4)
- 2 Security lights at each side
- Oven
- Air bed sofa sleeper
- 24" LCD HDTV campsite theatre
- Aluminum rims
- Power king rear slide (210, 230, 250, 280)
- Power awnings
- Trundle bed (312 only)
- Freestanding table (260, 274, 277, 279, 298)

### Outback Designer Package\*

- Wall border
- Cloth shower curtain (most models)
- Laundry hamper
- Oil rubbed bronze coat hooks (most models)
- Utensil rack
- Innerspring mattress
- Bedspread
- LP cover
- Raised panel refrigerator
- Pleated shades
- Decorative wall lights
- Trash can

### Outback Comfort Package\*

- 13,500 BTU ducted AC
- TV antenna/cable
- AM/FM/CD stereo with MP3 hookup
- Microwave
- Stor-mor Dinette Drawers
- Entry handle
- High low dinette

\* Denotes STD Build Options

# Outback

Keystone Super-Lite

[www.keystone-outback.com](http://www.keystone-outback.com)



[www.keystonerv.com](http://www.keystonerv.com)

2642 Hackberry Drive  
PO Box 2000  
Goshen, IN 46527-2000  
(574) 535-2100



Download the Tag app at  
<http://gettag.mobi> and scan this Tag.

YOUR Local DEALER IS:

MARCH 2012



Go RVing  
LIFE & FUN

Product information is as accurate as possible at the date of publication of this brochure. Features, floor plans, and specifications are subject to change without notice. Please also consult Keystone's web site at [keystonerv.com](http://keystonerv.com) for more current product information and specifications. Tow Vehicle Disclaimer. CAUTION: Owners of Keystone recreational vehicles are solely responsible for the selection and proper use of tow vehicles. All customers should consult with a motor vehicle manufacturer or their dealer concerning the purchase and use of suitable tow vehicles for Keystone products. Keystone disclaims any liability or damages suffered as a result of the selection, operation, use or misuse of a tow vehicle. KEYSTONE'S LIMITED WARRANTY DOES NOT COVER DAMAGE TO THE RECREATIONAL VEHICLE OR THE TOW VEHICLE AS A RESULT OF THE SELECTION, OPERATION, USE OR MISUSE OF THE TOW VEHICLE. 3/2012