



Tandara

FIFTH WHEELS

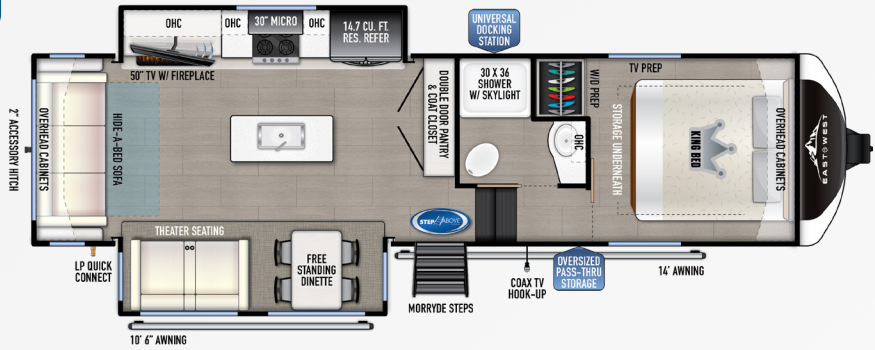


EastToWestRV.com/Tandara
A DIVISION OF FOREST RIVER



TANDARA REAR LOUNGE FLOORPLANS

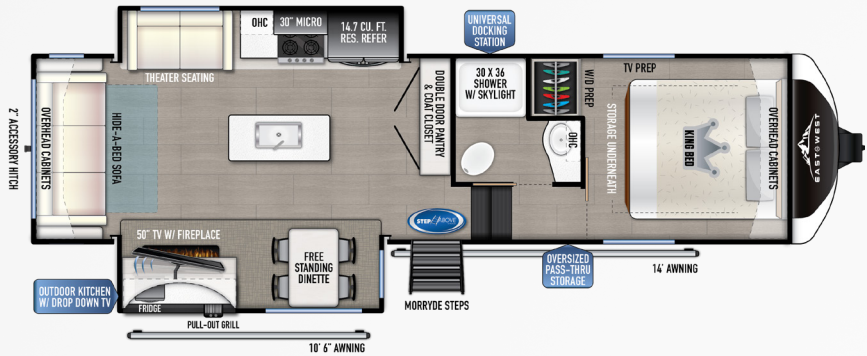
REAR LOUNGE
DOUBLE SLIDE



285RL

LENGTH	HEIGHT	HEIGHT 2ND A/C	UVW	CARRY CAPACITY	GVWR	HITCH WEIGHT	FRESH WATER	GRAY WATER	WASTE WATER
33' 4"	12' 10"	13' 2"	10184	3471	13655	1655	63	90	45

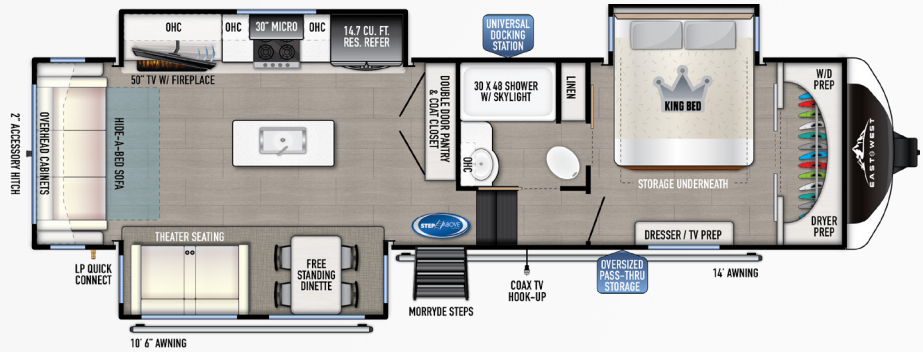
REAR LOUNGE
DOUBLE SLIDE W/ OUTDOOR KITCHEN



286RL-OK

LENGTH	HEIGHT	HEIGHT 2ND A/C	UVW	CARRY CAPACITY	GVWR	HITCH WEIGHT	FRESH WATER	GRAY WATER	WASTE WATER
33' 4"	12' 10"	13' 2"	10504	3141	13645	1645	63	90	45

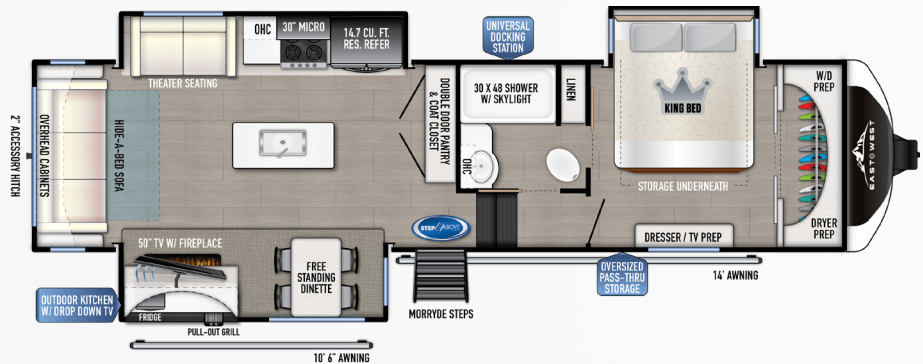
REAR LOUNGE
TRIPLE SLIDE



320RL

LENGTH	HEIGHT	HEIGHT 2ND A/C	UVW	CARRY CAPACITY	GVWR	HITCH WEIGHT	FRESH WATER	GRAY WATER	WASTE WATER
35' 4"	12' 10"	13' 2"	10584	3541	14125	2125	63	90	45

REAR LOUNGE
TRIPLE SLIDE W/ OUTDOOR KITCHEN

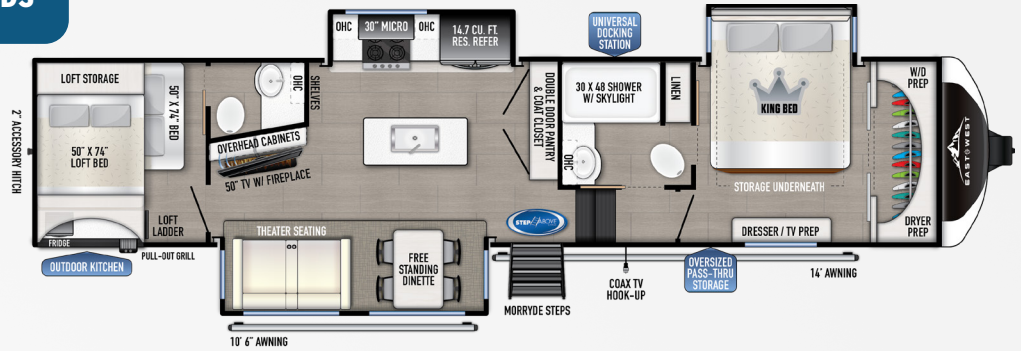


321RL-OK

LENGTH	HEIGHT	HEIGHT 2ND A/C	UVW	CARRY CAPACITY	GVWR	HITCH WEIGHT	FRESH WATER	GRAY WATER	WASTE WATER
35' 4"	12' 10"	13' 2"	11239	2801	14040	2040	63	90	45

TANDARA FLOORPLANS W/ BUNK BEDS

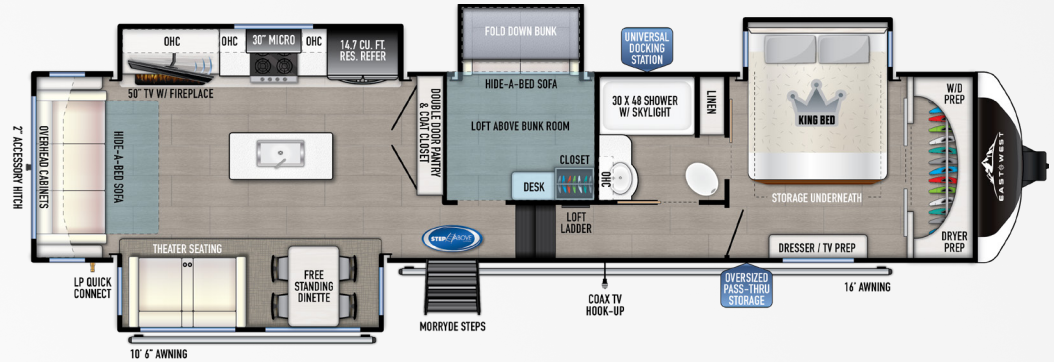
BUNK HOUSE W/ HALF BATH & OUTDOOR KITCHEN



375BH-OK

LENGTH	HEIGHT	HEIGHT 2ND A/C	UVW	CARRY CAPACITY	GVWR	HITCH WEIGHT	FRESH WATER	GRAY WATER	WASTE WATER
40'	13' 4"	13' 4"	12584	4061	16645	2645	63	90	90

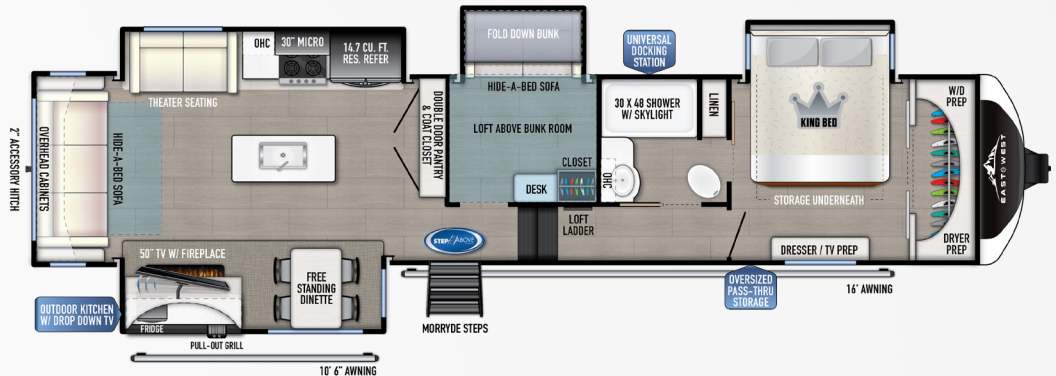
MID BUNK ROOM W/ DOOR SIDE WINDOWS



385MB

LENGTH	HEIGHT	HEIGHT 2ND A/C	UVW	CARRY CAPACITY	GVWR	HITCH WEIGHT	FRESH WATER	GRAY WATER	WASTE WATER
41' 3"	13' 2"	13' 4"	12984	3286	16270	2270	63	90	45

MID BUNK ROOM W/ OUTDOOR KITCHEN



386MB-OK

LENGTH	HEIGHT	HEIGHT 2ND A/C	UVW	CARRY CAPACITY	GVWR	HITCH WEIGHT	FRESH WATER	GRAY WATER	WASTE WATER
41' 3"	13' 2"	13' 4"	13179	3036	16215	2215	63	90	45

GVWR (Gross Vehicle Weight Rating) - is the maximum permissible weight of the unit when fully loaded. It includes all weights, inclusive of all fluids, cargo, optional equipment and accessories. For safety and product performance do NOT exceed GVWR.

GAWR (Gross Axle Weight Rating) - is the maximum permissible weight, including cargo, fluids, optional equipment and accessories that can be safely supported by a combination of all axles.

UVW (Unloaded Vehicle Weight)* - is the typical weight of the unit as manufactured at the factory. It includes all weights at the unit's axle(s) and tongue or pin and LP Gas. The UVW does not include cargo, fresh potable water, additional optional equipment or dealer installed accessories.

*Estimated Average based on standard build optional equipment.

CCC (Cargo Carrying Capacity)** - is the amount of weight available for fresh potable water, cargo, additional optional equipment and accessories. CCC is equal to GVWR minus UVW. Available CCC should accommodate fresh potable water (8.3 lbs per gallon). Before filling the fresh water tank, empty the black and gray tanks to provide for more cargo capacity.

**Estimated average based on standard build optional equipment.

Each Forest River RV is weighed at the manufacturing facility prior to shipping. A label identifying the unloaded vehicle weight of the actual unit and the cargo carrying capacity is applied to every Forest River RV prior to leaving our facilities.

The load capacity of your unit is designed by weight, not by volume, so you cannot necessarily use all available space when loading the unit.

TANDARA LUXURY PACKAGE

- Automatic Leveling System
- Solid Surface Kitchen Countertops
- Seamless Fiberglass Shower
- 50" LED Television w/ Swing Arm
- Furrion HDMI/AM/FM Bluetooth Entertainment System w/ Sound Bar Speakers
- 30" Over-The-Range Residential Microwave
- Metal Slam Latch Cargo, LP & Outside Kitchen Doors
- Universal All-In-One Docking Station
 - *Outside Shower w/ Quick Connect Hose and Spray Nozzle
 - *Waste Tank Flush
 - *PowerFill Fresh Water Tank for Dry Camping
 - *Exterior Water Pump Switch
 - *Siphon Fill or Sanitize Fresh Water Tank From Vessel Using Water Pump
 - *EZ Winterization Valve
 - *Battery Kill Switch
- 10 Gallon Water Heater
- Washer/Dryer Prep

TANDARA 4 SEASONS PACKAGE

- 15,000 BTU Main A/C
- Wired, Framed & Ducted for 2nd A/C
- Ductless Flooring Throughout Living Area
- 35,000 BTU High Capacity Furnace
- 48" Wide 5,100 BTU Electric Fireplace
- 12v Heat Pads on Holding Tanks
- Heated, Insulated & Enclosed Underbelly & Dump Valves w/ Circulating Heat
- Radiant Technology Composites™ Insulation in Roof, Front Cap & Underbelly (Calculated R-38 @ 80° Ambient)
- Formaldehyde Free Fiberglass Insulation in Roof, Front Cap & Main Floor
- Laminated Sidewalls, Slide-out End Walls, Slide-out Roofs, Rear Wall and Front Bulkhead Wall w/ Azdel Composite Panels & 1.5 LB Block Foam Insulation
- Dual Attic Vents

TANDARA TOWING PACKAGE

- Aerodynamic Fiberglass Front Cap
- Seamless High Visibility LED Front Cap Lights
- Marine Grade 10" LED Hitch Light



Learn More
Scan this barcode using a QR Reader on your smart phone to learn more about Forest River.



A Berkshire Hathaway company.



www.forestriverfrog.com

- LED Marker Lights
- LED Tail Lights with Back-Up Lights
- MORryde CRE 3000® Suspension
- Rear View Camera Prep
- 6,000 LB Axles & 16" Nitro Filled E-Range Tires (285, 286, 320, 321)
- 7,000 LB Axles & 16" Nitro Filled F-Range Tires (375, 385, 386)
- Under Carriage Spare Tire & Carrier
- LionsHead Specialty Tire & Wheel "1 Year No Excuses Guarantee" Program
- 2" Rear Accessory Hitch
- Driver's Side Automatic Leveling System Control Box

EXTERIOR

- Gel Coated Fiberglass Exterior
- Deep Tint Safety Glass Windows
- Residential Wood Framed Roof
- Factory Installed Roof Ladder
- 5/8" Tongue & Groove Plywood Floor Decking
- 2" Thick Double Welded Aluminum Framed Sidewalls, Rear Wall, Front Bulkhead Wall & Slide-Out Rooms
- Double Welded & Fully Framed Window, Entry Door, Cargo Door and Slide-out Openings
- 3" x 2" Double Welded Aluminum Floor Joists (16" On Center)
- 50 AMP Electrical Service
- Detachable 50 AMP Power Cord
- 60 AMP Converter w/ Charge Wizard Technology & Lithium or Lead Acid Battery Selector Switch
- 30" Wide x 78" Tall Entry Door
- Adjustable Power Awning w/ LED Lights
- High Capacity Water Pump w/ Interior & Exterior Switch
- EZ Access Low Point Drain Valves
- 30 LB LP Bottles (2)
- LP Quick Connect
- Exterior Cable/Satellite Hookup in Pass Thru Storage or Outside Kitchen Compartments
- LED Motion Sensor Lights in Pass Thru Storage and Outside Kitchen Compartments
- Safety Light Kit: Entry Steps and Under Bedroom Slide-out
- Marine Grade LED Light at Sewer Termination

INTERIOR

- Artisan Maple Interior Décor
- Residential Shaker Style Cabinet Doors w/ Hidden Hinges
- Solid Core Cabinet Stiles
- Pre-Drilled & Screwed Cabinetry
- Ball Bearing Full Extension Drawer Guides
- Hide-A-Bed Sofa (N/A 375 BH)
- Wall Hugger Theatre Seats
- Wall Mounted Free Standing Dinette w/ 4 Chairs
- 6' 4" Tall Main Slide-out Interior Height
- Slow Rise™ Roller Shades
- Matte Black LED Kitchen Pendant Lights (2)
- LED Motion Sensor Lights in Bathroom Hallway & Bedroom Closets
- Vinyl Flooring in Living Area, Kitchen, Bathroom & Bedroom (No Carpet)
- Marine Grade Woven PVC Flooring in Flush Floor Slide-outs
- Deep Seated Stainless Steel Sink
- Roll Up Stainless Steel Drying Rack
- Residential High Rise Faucet w/ Pull-Down Sprayer
- Kitchen 12v MAXXAIR MAXXFAN® Fan
- Pull Out Trash Can in Kitchen Island
- 14.7 Cubic Foot Residential Refrigerator w/ 1,000 Watt Inverter
- 21" Oven & Range w/ Flush Mount Range Cover
- 6' 6" Tall Main Bathroom Interior Height
- Porcelain Toilet w/ Foot Flush
- Skylight Over Shower
- Bathroom 12v Power Vent Fan
- Extra Large Seamless Lav Top w/ Undermounted Sink
- Large Medicine Cabinet w/ Mirror
- 70" x 80" King Bed w/ Residential Bedspread
- Oversized Underbed Storage
- Bedroom Cable/Satellite Hookup

OPTIONS

- 12 Cubic Foot 4 Door Gas/Electric Refrigerator
- 60" x 80" Queen Bed w/ Residential Bedspread
- Wall Mounted Booth Dinette w/ 2 Benches
- 2nd Adjustable Power Awning w/ LED Lights
- Ducted 2nd 15,000 BTU A/C
- Generator Prep
- Roof Mounted Solar Prep w/ 10 Gauge Wire (Mandatory Option)



www.ForestRiverBuyLocal.com



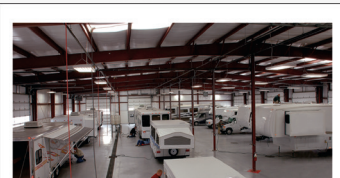
24/7 EMERGENCY ROADSIDE ASSISTANCE WITH VEHICLE PURCHASE*

TOWING
JUMP-STARTS
TIRE CHANGES
FLUID DELIVERY
LOCKOUT
SERVICE

WINCH-OUT
MOBILE MECHANIC
TECHNICAL
SUPPORT
DEALER LOCATOR
SERVICES



*VALID FOR 1 YEAR FROM DATE OF PURCHASE



PRE-DELIVERY INSPECTION FACILITY
20,000 square feet of quality assurance. The bare essentials for a premium product. This state-of-the-art facility gives immediate daily feedback to production for quality assurance in every unit built.

EAST TO WEST takes pride in our five guiding principles and our corporate philosophy which focuses on people working together to create high quality, value-added products that deliver the ultimate RV experience!



@easttowestr



EAST TO WEST RV

SUSTAINABLE MANUFACTURING

An important objective to our strategy and operations is to implement economically sound manufacturing processes to reduce/recycle waste & conserve energy and natural resources.

CORPORATE & SOCIAL RESPONSIBILITY

We foster a business environment in which we focus on and practice:

- Teamwork
- Philanthropy
- Volunteering

CULTURE & VALUES

We are a forward thinking company committed to fostering a culture of teamwork. By being transparent, we encourage our employees to think outside the box and make a difference!

QUALITY & CONSTRUCTION

Our team takes pride in each unit we build. Our manufacturing standards and point to point inspections ensure each EAST TO WEST brand is built to the same quality specifications every time.

OUR COMMITMENT

We strive to provide the highest quality products at the best possible price to our customers. We invite you to be a part of the EAST TO WEST family and we look forward to exceeding your expectations!

YOUR *Tandara* DEALER:



3000 CR 6 W | ELKHART, IN 46514 | 574.264.6664 | www.EASTTOWESTRV.com

©2021 East To West, Inc. a Division of Forest River, Inc., a Berkshire Hathaway Company. All Rights Reserved.

All information contained in this brochure is believed to be accurate at the time of publication. However, during the model year, it may be necessary to make revisions and Forest River, Inc., reserves the right to make all such changes without notice, including prices, colors, materials, equipment and specifications as well as the addition of new models and the discontinuance of models shown in this brochure. Therefore, please consult with your Forest River dealer and confirm the existence of any materials, design or specifications that are material to your purchase decision. P: 2021.04.20