

**Lance** The Truck Camper Buyer's Guide

New models | Features | Floorplans | Option packages | Accessories

Lance Celebrating 40 years AMERICA'S FAVORITE TRUCK CAMPER 1965-2005

# go anywhere



**2005**  
SECOND EDITION

**Lance**

America's favorite truck camper





# go anywhere, do a

**Freedom.**  
**The American dream.**  
**To be able to go**  
**where you want,**  
**when you want.**

**No reservations.**  
**No crowds.**  
**On country roads,**  
**away from the noise**  
**and all your cares.**

**A Lance camper –**  
**with a 4WD truck –**  
**gives you the freedom**  
**to travel and explore**  
**this great land.**



**Memories.**  
**Tales told around**  
**the campfire. Of people.**  
**Places. Things done.**

**A summer's camping.**  
**Boating. Fishing the lakes.**  
**Those hunting trips.**  
**Backcountry horse rides.**  
**Four-wheeling the dunes.**  
**Winter's sports.**

**Whatever your outdoor**  
**passions, a Lance can**  
**make memories that**  
**last lifetimes.**







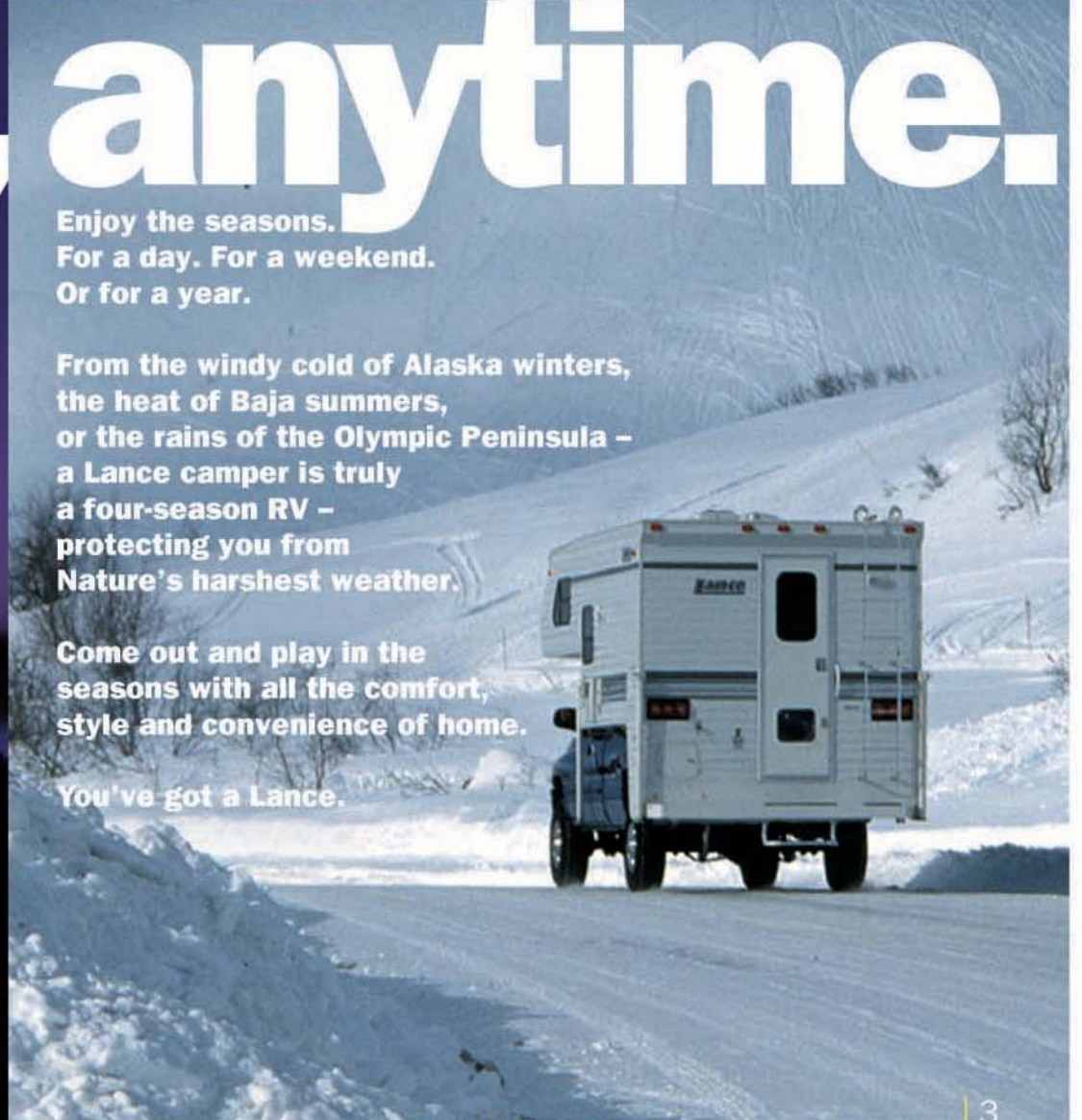
# anything, anytime.

Enjoy the seasons.  
For a day. For a weekend.  
Or for a year.

From the windy cold of Alaska winters,  
the heat of Baja summers,  
or the rains of the Olympic Peninsula –  
a Lance camper is truly  
a four-season RV –  
protecting you from  
Nature's harshest weather.

Come out and play in the  
seasons with all the comfort,  
style and convenience of home.

You've got a Lance.





# There's a Lance just right for you

From start to finish, every Lance camper is addressed with the same care and attention to detail without concern for the size or level of features or decor. More than 400 highly skilled men and women apply their expert workmanship to every model we build. You can expect that the Lance we've built for you will provide many years of reliable service and enjoyment – with superb fit-and-finish and real lasting value.

Lance builds four series of campers to meet the needs of almost every full-size truck owner. In creating these campers, we engineered them with a variety of considerations in mind – truck capacities, truck bed lengths, towing capacities, level of equipment, sleeping capacities, and price ranges – to name a few.

Your nearest Factory Authorized Lance Dealer is specially trained, knowledgeable, and can help you select the model and equipment for the ultimate satisfaction you deserve.



The new 9'11" Lance Max 981 – floorplan, specs and interior pictures on page 15

## Lance Lite™ Series

Our Lance Lite Series consists of five standard camper models – all built with the same care and attention to detail and quality as all our other models.

All five feature highly functional floorplans – where you can tailor the options to your needs and budget.

A simple camper – or modestly-loaded with options.

It's your choice.

The Lance Lite Series.

## Lance® Series | Lance Slideout™ Series

The Lance and Lance Slideout Series are our 'value-added' product lines – created for experienced RVers seeking quality, reliability and more convenience items as standard features in their camper design.

Containing 40 years of know-how and camper-building experience – these eight models provide the ultimate in comfort and functionality in any outdoor situation.

Lance Slideout Series models offer increased floor space and comfortable step-up dinettes with additional storage.

## Lance Max™ Series

The Lance Max Series is our all-new line of campers – where practically everything that's considered an option in our other lines is standard for a Max. Even our Decor and Convenience Packages are standard.

Lance Max models feature full-wall slideouts, providing even more floor space than conventional campers – making Lance Max interiors extremely spacious.

A sub-floor basement area provides space for larger holding tanks and additional storage.

LanceLock™ – our proprietary precision structure and assembly process used in Lance Max models – incorporates a welded aluminum frame and interlocking aluminum assembly extrusions to ensure each unit provides its owners with a camper that's the ultimate in strength and reliability.

Although Lance Max models are generously equipped, there are numerous options to outfit your Max just the way you want it.

**What do our model numbers mean?** A very common question – and here's the answer. In a three-digit number, the first number tells you the interior floor length. ('8' is an 8-foot floor length camper.) In a four-digit number, the first two numbers tell you this. ('10' is a 10-foot floor length camper.) The middle number is arbitrary and just indicates a different floorplan. The last number tells you what product series the camper is in – '5' is Lance Lite Series, '0' is Lance Series, '1' is the Lance Slideout and Lance Max Series.



# How Lance is Number 1

## 40 years strong – thank you!

Lance has been in the truck camper design and manufacturing business since 1965 – and is the world's largest truck camper company. Over 50,000 families across the US and Canada – and all around the globe – enjoy their Lance camper.

To all of our Lance loyalists over the years – thank you! To new prospective owners, we look forward to the opportunity to demonstrate why thousands have made Lance their RV.

## We specialize in campers

We've chosen to specialize in this unique segment of the RV industry – becoming well-renowned by both our peers and our customers for our excellence in design and engineering and attention to the quality of craftsmanship in all our products.

In fact, there's a large percentage of employees at our factory complex who are avid campers and outdoor enthusiasts themselves – and many actually own and use Lance products.

We're campers and we know truck campers.

With a Lance, you can be assured you're receiving products built by people who care about what they do – using the finest in today's manufacturing technologies – to give you years of outdoor fun with a durable, high-quality product that maintains its value.

## Our focus on quality

Compared to typical RV construction, the methods, machinery and materials we use to build our campers are unique.

To us, construction (much of which you don't see) is what separates us from most others. Our intricate wood frames and cabinets are assembled with furniture glue, never to come apart. Walls, floors and roofs are assembled and pressure bonded to insure perfectly square components. Critical plumbing parts are brass, not plastic.

When you step inside a Lance camper, you'll immediately sense and feel the difference – a substantial difference.

Jump on our floors. Pound on our walls and ceilings. Push on the roof. Lift up the mattress. Pull on our cabinets. Look in an outside compartment. You'll recognize Lance's superior construction and fit-and-finish. There are no other campers that will come close to the same results.

And quality? It's very evident once you've been inside a Lance. Open a cabinet. Notice the seals at the joints to help keep dust out? The trim around all door openings, the positive safety latches on all the doors, the all-wood drawers. Everywhere you look you'll see uncompromising quality.

If you're not convinced, we suggest you try the same tests with other truck campers. We're confident you'll come to the conclusion so many others have – Lance is Number 1.

We happen to be the largest camper manufacturer, but not by chance. It's because we specialize in only one thing and keep our focus on quality. That's what people want. We take great pride in being the best, not necessarily the largest.

With more than 100 Factory Authorized Dealers across America, there's a good chance there's a dealer close to you. We invite you to visit them and see our products for yourself.



*Lance has again received (as we have numerous times before) the prestigious DSI Quality Circle Award for product excellence – from the RVDA dealer organization.*

## The Lance Family

You can't build a quality camper overnight. Not even in a few months, or even a few years. It takes many years of experience to get it all right – to consistently build trouble-free products that have been tested and re-tested.

And it takes a lot of expertise to recruit and manage well-trained teams to help create campers that will last for generations.

Engineers. Designers. Purchasing managers. Production technicians. Quality control inspectors. Service and parts personnel. People with decades of experience within the RV industry – working together to forge the best products they can.

Over 400 employees – many who devote their careers with us – dedicate their skills and talents to designing, engineering and building the best truck campers on the planet. We know how to engineer and build campers that are strong and long-lasting – providing years of enjoyment – while maintaining their resale value.

If you're ever in the Southern California area and want to see us working – building our products – we have factory tours, usually on Wednesdays. Please call ahead a couple of weeks in advance to check availability and to book an appointment.



Manufacturing plant and administrative offices complex

The front of Lance's 110,000-square-foot manufacturing plant and administrative offices complex in the sunny, high desert of Southern California's Antelope Valley – where more than 400 employees produce 17 high-quality camper models in four RV product lines.



This is the entrance to Lance's new 31,000-square-foot service and parts facility. Here, over 100 dealerships nationwide receive Lance warranty and customer service, tech support, and prompt delivery of needed parts with computerized tracking. Thousands of parts are here and available for immediate shipping. A regularly scheduled training program and on-site education center helps train dealers to ensure quality service.



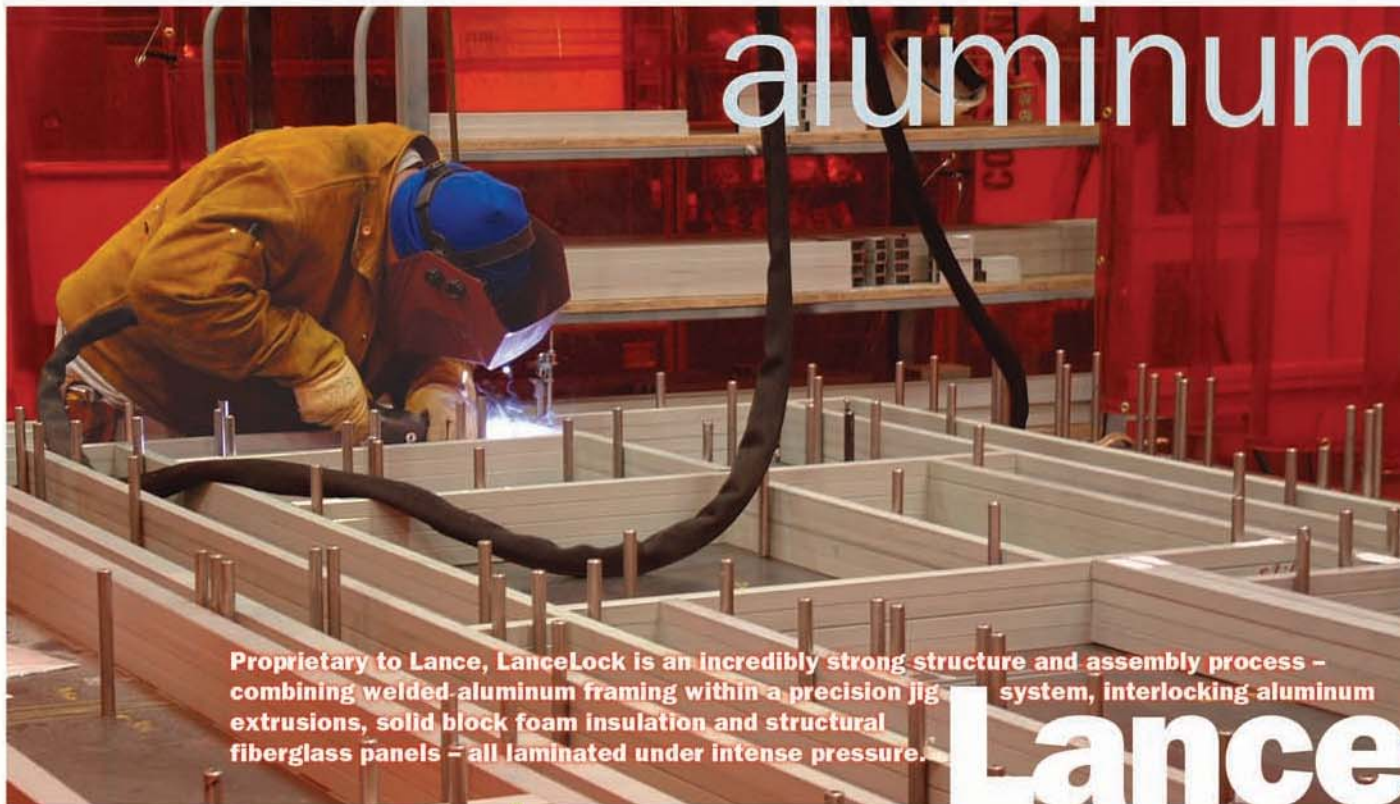
New service and parts facility



Overlooking the final assembly lines



# designed + built to last



## aluminum

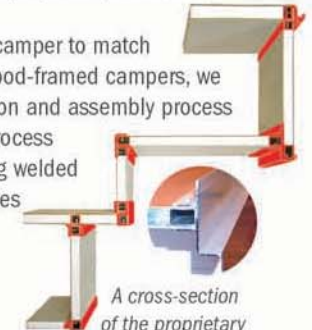
Proprietary to Lance, LanceLock is an incredibly strong structure and assembly process – combining welded aluminum framing within a precision jig system, interlocking aluminum extrusions, solid block foam insulation and structural fiberglass panels – all laminated under intense pressure.

# LanceLock™

### The Lance Max Series – with exclusive LanceLock construction

With the additional structure needed in the new Lance Max Series to support full-wall slideouts and sub-floor basement compartments, aluminum framing was chosen as the optimum framing material because of its rigid properties, consistent strength and low weight.

To build an aluminum-framed camper to match the strength and reliability of our wood-framed campers, we use a proprietary design, construction and assembly process called LanceLock. The LanceLock process assures precision assembly by using welded aluminum frames fastened to a series of specially designed aluminum extrusions within a state-of-the-art, high-pressure bonded lamination structure.



A cross-section of the proprietary LanceLock structure – highlighting in red the specially designed, interlocking and sealed aluminum extrusions – the key component behind LanceLock's strength.

Simply put, it's unbelievably strong – and built to stay strong and retain value for many years. LanceLock. Only in a Lance.

## wood

In our Lance Lite, Lance and Lance Slideout Series models, we use premium-grade, kiln-dried fir and pine for our structural framing – as we have done for four decades.

These intricate lattices of woodwork are hand-assembled and glued together – with as much as six gallons of non-toxic wood glue per model – to form amazingly solid structures.

**Little parts make a big difference.** Lance uses expensive stainless steel and coated Everlube® fasteners on our exteriors to help prevent corrosion – important in maintaining the like-new appearance and value of your truck camper investment. A small example of how little things make a big difference – and the attention to detail we invest in engineering quality products for you.



Interior walls are glued to the frame structure for shear wall strength. The walls are then completely insulated with high-density rigid block foam – including exterior compartments. Fiberglass sides are cemented to the camper with special adhesives and bonded under pressure. Critical areas, including corners and tie-down brackets, are reinforced with steel.

All Lance campers have laminated roofs covered with seamless TPO (thermoplastic polyolefin) material – tough, strong and long-lasting. TPO has a reflective quality that helps reduce heat, and it's very easy to clean.

On average, hundreds of man-hours – and over 1700 components – many of them custom – go into building each Lance camper. We care about the quality of our products and invest the extra time, energy and expense to ensure we consistently produce the best truck campers that can be made.



Over 40 years, wood has continued to prove itself a reliable, strong and stable RV construction material.



# 8' campers

The 8'6" **Lance Lite 815** is available in two configurations. The standard configuration (left) fits long bed trucks. Short bed trucks can be accommodated with the simple addition of a short bed skirt modification (right) ordered through your dealer. They're installed at the factory, or by your dealer's service department. **page 8**



The 8'6" **Lance Lite 835** fits long bed trucks. **page 9**



The 8'11" **Lance 820** fits short bed trucks. Standard exterior aluminum, shown in optional fiberglass. **page 10**



The 8'6" **Lance Lite 845** fits short bed trucks. **page 9**



The 8'11" **Lance Slideout 821** fits short bed trucks. **page 11**

**new**



The 8'11" **Lance Max 881** is a different Max - and specially built for full-size, heavy-duty short bed trucks. **page 12**



*Lance Lite 845 on a short bed truck*

Four decades of truck camper experience has helped us develop the most versatile, feature-packed, fully-self-contained campers for those who'd like to own a shorter camper.

Lance offers a variety of models to fit both long bed and short bed trucks with variable cargo carrying capacities.

These campers, all less than nine feet in interior floor length, allow for hauling the heaviest trailer loads - a benefit horse and big boat owners can well appreciate.

**Bill**

"I travel across the Midwest competing in the PRCA rodeo circuit. Hundreds of thousands of miles. And, of course, I take my horses. This is my second Lance camper. I love it!"



**Bill Huber**

National PRCA tie-down roping champion | Lance owner



**Key to footnotes within basic spec tables appearing on pages 8-12** \*Headroom measured as height from cabover floor (without mattress) to highest point in cabover ceiling. \*\*Height measured from camper's truck bed plate to roof (without air conditioning unit, satellite TV antenna or roof storage system) - including the 7 inches for the top of roof ladder. †Height measured from camper's retracted legs to roof (without air conditioning unit, satellite TV antenna or roof storage system) - including the 7 inches for the top of roof ladder. ‡Dry weight based upon standard model features and doesn't include options, equipment packages or dealer-installed items.



# Lance Lite 815

8'6" narrow-body wet bath camper with short bed modification available

The Lance Lite 815 is a lightweight, fully-self-contained camper – complete with a shower, toilet, water heater, sink, stove, comfortable eating area, queen-size bed, forced-air heater – and plenty of room to make memories that last lifetimes. It's perfect for single rear-wheel trucks – lighter, lower and sleeker than full-sized campers.



The optional extended cabover includes a queen mattress bed – shown above with an optional front window. Overhead cabinets are available in the extended cabover configuration, too.

- Interior floor length 8'6"
- Interior floor width 45 3/4"
- Interior height 6'6"
- Cabover interior headroom 32 1/2"
- Truck bed height 89 1/4"
- Exterior width 86"
- Overall exterior height 96 1/4"
- Fresh water tank 18 gallons
- Grey water tank 11 gallons
- Black water tank 10 gallons<sup>††</sup>
- LPG tanks 1 quantity - 5 gallons
- Refrigerator 3 cubic feet - three-way power mode
- Furnace 18,000 BTUs

**Standard cabover configuration**

- Exterior length 15'5"
- Center of gravity 66" long bed/48" short bed
- Dry weight 1695 pounds

**Extended cabover configuration**

- Exterior length 16'5"
- Center of gravity 68" long bed/50" short bed
- Dry weight 1795 pounds<sup>†</sup>

<sup>††</sup> Shower waste drains into black tank. All other footnotes defined on page 7.



The 815's optional add-on short bed modification skirts make the 815 compatible with short bed full-size trucks, provide extra storage, and the required brake and tail lights.





# Lance Lite 835

8'6" wet bath long bed camper



**Because of no overhang with the 835, you can pull a large load without a hitch box extension. And the holding tanks are completely separate – allowing you to drain your grey water and still continue to camp.**

The Lance Lite Series' extended cabover with queen-size bed is standard on the 835 and 845. The front cabinets provide extra storage.



- Interior floor length 8'6"
- Interior floor width 45 3/4"
- Interior height 6'8"
- Cabover interior headroom 34"
- Truck bed height 90 1/2"\*\*\*
- Exterior width 93"
- Overall exterior height 102 1/2"†
- Fresh water tank 33 gallons
- Grey water tank 8 gallons
- Black water tank 8 gallons
- LPG tanks 1 quantity - 5 gallons
- Refrigerator 4 cubic feet - three-way power mode
- Furnace 18,000 BTUs

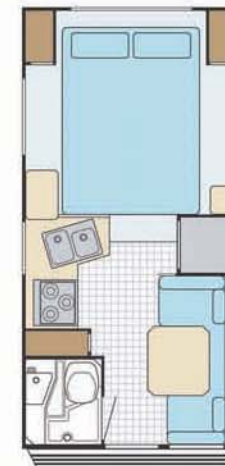
**Extended cabover only**  
 Exterior length 16'5"  
 Center of gravity 67"  
 Dry weight 2040 pounds!

# Lance Lite 845

8'6" wet bath short bed camper



**With a built-on bumper and step for easy access into the camper, the 845 is a short bed truck's dream.**



- Interior floor length 8'6"
- Interior floor width 45 3/4"
- Interior height 6'8"
- Cabover interior headroom 34"
- Truck bed height 90 1/2"\*\*\*
- Exterior width 93"
- Overall exterior height 102 1/2"†
- Fresh water tank 33 gallons
- Grey water tank 15 gallons
- Black water tank 14 gallons
- LPG tanks 1 quantity - 5 gallons
- Refrigerator 4 cubic feet - three-way power mode
- Furnace 18,000 BTUs

**Extended cabover only**  
 Exterior length 16'5"  
 Center of gravity 49"  
 Dry weight 2190 pounds!

\* Footnotes defined on page 7.



# Lance 820

8'11" wet bath short bed camper

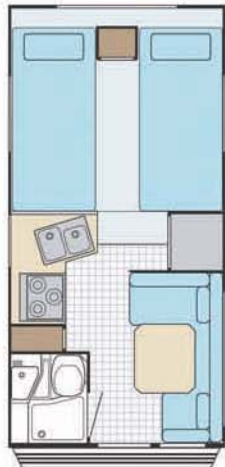
The ultimate in luxury for short bed truck owners – when storage and bath size counts. The Lance 820 has a roomy bath, built-in TV cabinet above the sink, removable counter and deluxe microwave. A split holding tank system with separate black and grey water holding tanks is unique in shorter campers. The generator option also makes the 820 a popular model. Shown below with optional stereo, oven and Decor Package.



Twin beds in the cabover area are optional on the 820. The comfortable innerspring mattresses with bed covers are separated by a night stand. Additional storage is provided with the overhead cabinets.



The extra-large 6'3" dinette in the 820 has extensions in the eating area for added seating and easily converts into a large bed. The table slides to various positions for comfortable dining.



- Interior floor length 8'11"
- Interior floor width 45<sup>3</sup>/<sub>4</sub>"
- Interior height 6'10"
- Cabover interior headroom 38<sup>1</sup>/<sub>2</sub>"\*
- Truck bed height 94<sup>1</sup>/<sub>2</sub>"\*\*
- Exterior width 93"
- Overall exterior height 106<sup>1</sup>/<sub>2</sub>"†
- Fresh water tank 33 gallons
- Grey water tank 21 gallons
- Black water tank 14 gallons
- LPG tanks 2 quantity – 5 gallons each
- Refrigerator 5 cubic feet – three-way power mode
- Furnace 18,000 BTUs

- Extended cabover only**
- Exterior length 16'11"
- Center of gravity 48"
- Dry weight 2585 pounds†

\* Footnotes defined on page 7.





# Lance Slideout 821

8'11" wet bath short bed camper with slideout dinette on curbside



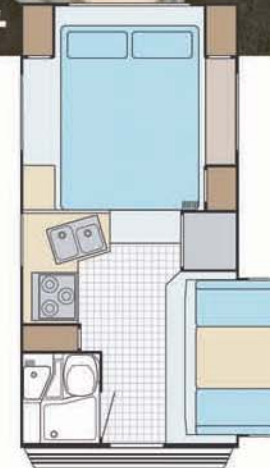
The Lance Slideout 821 provides excellent floor space. Like the Lance 820, it's specially designed for heavy-duty short bed trucks – but features a slideout dinette area – adding even more space. A roomy bath, split holding tanks and generator option make the 821 very popular. Whatever the weather, you'll be comfortable inside this spacious short bed camper.

The spacious bath in the 821 provides ample leg room, ducted heat, an exhaust fan/vent – and features a full-height, single-piece shower stall, medicine cabinet and toilet paper compartment behind a waterproof door. A skylight provides extra headroom.



### Pictures that let you see everything.

Conventional wide-angle photography can be limiting. In order to capture all the interior space of our 821, 881, 981, 1181 and 1191 models, we had to use special QuickTime™ Virtual Reality (QTVR) panoramic photography – giving you full 180° visual sweeps of these expansive interiors from side-to-side. QuickTime VR



\* Footnotes defined on page 7.

- Interior floor length 8'11"
- Interior floor width 45<sup>3</sup>/<sub>4</sub>"
- Interior height 6'10"
- Cabover interior headroom 38<sup>1</sup>/<sub>2</sub>"\*\*
- Truck bed height 94<sup>1</sup>/<sub>2</sub>"\*\*\*
- Exterior width 93"
- Overall exterior height 106<sup>1</sup>/<sub>2</sub>"±
- Fresh water tank 33 gallons
- Grey water tank 21 gallons
- Black water tank 14 gallons
- LPG tanks 2 quantity - 5 gallons each
- Refrigerator 5 cubic feet - three-way power mode
- Furnace 18,000 BTUs

- Extended cabover only**
- Exterior length 16'11"
- Center of gravity 42"
- Dry weight 3080 pounds†



8'11" camper

Lance Celebrating 40 years AMERICA'S F

# Lance Max 881 new

8'11" wet bath camper with dinette and refrigerator on roadside full-wall slideout.

The new 881 is a different kind of Lance Max camper. Built with Lance's exclusive LanceLock construction for full-size, heavy-duty short bed trucks, the 881 is our most spacious 8-foot design ever. More floor space. More tank capacity. More storage space – with increased headroom in the cabover sleeping area. And loaded with many of our most-popular features.



Interior floor length 8'11"  
Interior floor width 56"  
Interior height 6'8"  
Cabover interior headroom 44 1/2"  
Truck bed height 101 3/4"  
Exterior width 96 3/4"

Overall exterior height 112 3/4"  
Fresh water tank 30 gallons  
Grey water tank 30 gallons  
Black water tank 30 gallons  
LPG tanks 2 quantity – 5 gallons each  
Refrigerator 6 cubic feet –  
three-way power mode  
Furnace 15,000/22,000 BTUs –  
automatic dual-speed/dual-output

**Extended cabover only**  
Exterior length 17'0"  
Center of gravity 41"  
Dry weight 3280 pounds<sup>†</sup>

\* Footnotes defined on page 7.

How was this picture taken? See details on page 11. QuickTime VR



Some standard features and options on the 881 differ from other models in the Lance Max Series. Because weight and center of gravity play critical roles in the handling experience of a truck/camper package, the 881 has many of the features of other Lance Max Series models – but some had to be changed to reduce weight and keep the center of gravity forward. For example, the convection microwave has been replaced with a conventional oven – the battery tray will take a single group 31 battery – two five-gallon LPG tanks are standard – and the carpet kit is an option. You can compare all the standard features and options on pages 26-27 – or see a Lance Max 881 and compare it with other Lance models at your nearest Factory Authorized Lance Dealer.



# 9' campers



The 9'6" **Lance Lite 915** is ideal for most heavy-duty single rear-wheel trucks. Its popular floorplan offers all the space, comfort and appliances to make your adventures easy and enjoyable. **page 14**

The 9'6" **Lance 920** is our only model with a comfortable side sofa that easily converts to a bed. A good-sized bathroom and lots of floor space are important features as well. **page 14**



**new** The 9'11" **Lance Max 981** takes truck campers to an entirely new level. With all-aluminum Lancelock construction and a sub-floor basement, it's nothing less than amazing in what's been done with this model. The rear kitchen is unique and all the windows create a refreshing, open feeling. Included is a host of features not found on other models, along with a variety of new options. **page 15**



**Lance Max 981**

**Three distinctly different campers in the nine-foot range offer a variety of features and options to fit the needs of those who prefer a camper with moderate overhang. They provide extra storage over an eight-foot camper – with little sacrifice to towing capacity.**

**Key to footnotes within basic spec tables appearing on pages 14-15** \* Headroom measured as height from cabover floor (without mattress) to highest point in cabover ceiling. \*\* Height measured from camper's truck bed plate to roof (without air conditioning unit, satellite TV antenna or roof storage system) – including the 7 inches for the top of roof ladder. † Height measured from camper's retracted legs to roof (without air conditioning unit, satellite TV antenna or roof storage system) – including the 7 inches for the top of roof ladder. ‡ Dry weight based upon standard model features and doesn't include options, equipment packages or dealer-installed items.

**“Sterling and I take our Lance all over. You've gotta get yourself a Lance!”**

**Paula Marlin**  
Lance owner

Paula



**“When Paula and I aren't at the track, our Lance is perfect for hunting, fishing, and all those terrific tailgating parties with our friends.”**

**Sterling Marlin**  
NASCAR champion  
Lance owner

Sterling



# Lance Lite 915

9'6" wet bath camper



Interior floor length 9'6"  
 Interior floor width 45 3/4"  
 Interior height 6'10"  
 Cabover interior headroom 36"  
 Truck bed height 92 1/2"  
 Exterior width 93"  
 Overall exterior height 104 1/2"  
 Fresh water tank 33 gallons  
 Grey water tank 13 gallons  
 Black water tank 14 gallons  
 LPG tanks 2 quantity - 5 gallons each  
 Refrigerator 5 cubic feet - three-way power mode  
 Furnace 18,000 BTUs

**Extended cabover only**  
 Exterior length 17'6"  
 Center of gravity 58"  
 Dry weight 2370 pounds!

\* Footnotes defined on page 13.

**The Lance Lite 915 is our most popular size of self-contained camper - at a very lightweight price. This mid-sized model is ideal for most heavy-duty single rear-wheel trucks. It includes lots of storage along with a large bath and complete galley. Shown here with an optional oven and stereo, a generator is also a popular option.**



The Lance Lite Series' extended cabover with queen-size bed is standard on the 915. The front cabinets provide extra storage.



# Lance 920

9'6" wet bath camper with side sofa



**The open floor plan of the Lance 920 creates the feel of an 11-foot camper in only 9'6". The spacious view window over the front dinette with fold-over sofa/bed makes it a truly unique model. A huge wet bath and wardrobe add to this compact unit's comforts. Shown here with some optional features.**



Interior floor length 9'6"  
 Interior floor width 45 3/4"  
 Interior height 6'10"  
 Cabover interior headroom 38 1/2"  
 Truck bed height 94 1/2"  
 Exterior width 93"  
 Overall exterior height 106 1/2"  
 Fresh water tank 33 gallons  
 Grey water tank 13 gallons  
 Black water tank 14 gallons  
 LPG tanks 2 quantity - 5 gallons each  
 Refrigerator 5 cubic feet - three-way power mode  
 Furnace 18,000 BTUs

**Extended cabover only**  
 Exterior length 17'6"  
 Center of gravity 61"  
 Dry weight 2635 pounds!

\* Footnotes defined on page 13.





# Lance Max 981

9'11" wet bath camper with dinette and refrigerator on roadside full-wall slideout

The all-new Lance Max 981. Our most spacious 9-foot design ever. More floor space. More tank capacity. More storage space – with increased head room in the cabover sleeping area. And loaded with all the most-asked-for features.

How was this picture taken? See details on page 11. QuickTime VR



- Interior floor length 9'11"
- Interior floor width 56"
- Interior height 6'8"
- Cabover interior headroom 44 1/2"
- Truck bed height 101 1/4"
- Exterior width 96 1/8"
- Overall exterior height 112 3/4"
- Fresh water tank 40 gallons
- Grey water tank 30 gallons
- Black water tank 30 gallons
- LPG tanks 2 quantity – 7 gallons each
- Refrigerator 6 cubic feet – three-way power mode
- Furnace 15,000/22,000 BTUs – automatic dual-speed/dual-output
- Extended cabover only**
- Exterior length 18'0"
- Center of gravity 48"
- Dry weight 3449 pounds!

A large skylight and ducted heat to the 981's bath makes those morning showers in the outdoors particularly enjoyable.



48"-long sub-floor tray for long item storage.

High-head-clearance sleeping area with large insulated skylight – featuring integrated lighting, ventilation screen and blackout shade.

\* Footnotes defined on page 13.



# 10' campers



Aluminum-sided **Lance Lite 1025**

Lance offers three traditional 10-foot campers that have continued to be popular floorplans. Each has its own special features.

All three can accept a generator, and there are many other options available to make your camper perfectly suited to your specific needs.



The 10'1" **Lance 1010** is equipped with more standard features and upgrades and a large dinette that converts to a bed. Shown here with options. | [page 17](#)

The 10'11" **Lance 1030** is a camper with a well-balanced set of popular amenities – a dry bath, large kitchen and lots of additional storage. Shown here with options. | [page 17](#)



The 10'3" **Lance Lite 1025** is a great floorplan with many asked-for features, and is modestly priced. Shown here with options. | [page 18](#)

**Key to footnotes within basic spec tables appearing on pages 17-18** \*Headroom measured as height from cabover floor (without mattress) to highest point in cabover ceiling. \*\*Height measured from camper's truck bed plate to roof (without air conditioning unit, satellite TV antenna or roof storage system) – including the 7 inches for the top of roof ladder. † Height measured from camper's retracted legs to roof (without air conditioning unit, satellite TV antenna or roof storage system) – including the 7 inches for the top of roof ladder. ‡ Dry weight based upon standard model features and doesn't include options, equipment packages or dealer-installed items.

## Charley

**"I've owned a number of RVs in the past, and now I have a new Lance. It has everything I need to enjoy my trips in the country. If you're thinking about an RV that can go anywhere – with all the conveniences of home, check out Lance. Take it from old Charley...you'll love it."**

**Charley Pride**

International recording artist | Country Music Hall of Fame inductee | Lance owner



# Lance 1010

10'1" wet bath camper

The Lance 1010, with innovative cabover design, features a large bath and dinette capable of sleeping adults. The quality queen mattress assures a great night's sleep – and wardrobe drawers and shelves complete this master suite. The 10'1" configuration is a great length for convenience, with excellent towing capabilities. A large double-door refrigerator is standard. Removable counter space is a hidden feature. A generator is an available option.



- Interior floor length 10'1"
  - Interior floor width 45<sup>3</sup>/<sub>4</sub>"
  - Interior height 6'10"
  - Cabover interior headroom 38<sup>1</sup>/<sub>2</sub>"\*
  - Truck bed height 94<sup>1</sup>/<sub>2</sub>"\*\*
  - Exterior width 93"
  - Overall exterior height 106<sup>1</sup>/<sub>2</sub>"†
  - Fresh water tank 33 gallons
  - Grey water tank 21 gallons
  - Black water tank 14 gallons
  - LPG tanks 2 quantity – 5 gallons each
  - Refrigerator 6 cubic feet – three-way power mode
  - Furnace 18,000 BTUs
- Extended cabover only**
- Exterior length 18'1"
  - Center of gravity 58"
  - Dry weight 2690 pounds†

\* Footnotes defined on page 16.



The spacious, full-height bath featured in the 1010 provides ample leg room, ducted heat and an exhaust fan/vent. A skylight gives bathers extra headroom.

The Lance 1030 has a large galley, food prep area, extra drawer space – and a dry bath (separate toilet and shower). There's also room for an optional generator, too.



The dual battery tray – standard in the 1030, 1121, 1130, 1161, 1181 and 1191 models – is capable of accepting two group 27 batteries. All the necessary cables and tie-down straps are included. The batteries themselves are dealer-installed items.

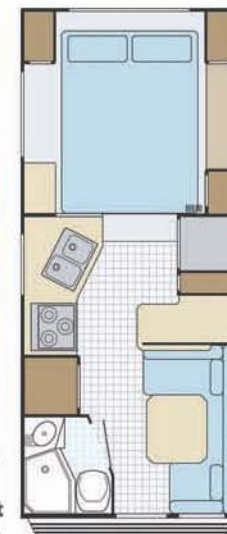


# 10'11" camper Lance 1030

10'11" dry bath camper with food prep counter



The 1030's dry bath lets you dress in a dry area after your shower – and a large skylight adds headroom and natural light.



- Interior floor length 10'11"
  - Interior floor width 45<sup>3</sup>/<sub>4</sub>"
  - Interior height 6'10"
  - Cabover interior headroom 38<sup>1</sup>/<sub>2</sub>"\*
  - Truck bed height 94<sup>1</sup>/<sub>2</sub>"\*\*
  - Exterior width 93"
  - Overall exterior height 106<sup>1</sup>/<sub>2</sub>"†
  - Fresh water tank 33 gallons
  - Grey water tank 15 gallons
  - Black water tank 15 gallons
  - LPG tanks 2 quantity – 7 gallons each
  - Refrigerator 6 cubic feet – three-way power mode
  - Furnace 20,000 BTUs
- Extended cabover only**
- Exterior length 18'11"
  - Center of gravity 52"
  - Dry weight 2770 pounds†

\* Footnotes defined on page 16.



10'3" camper

Lance® Celebrating 40 years AMERICA'S

# Lance Lite 1025

10'3" wet bath camper with food prep counter



Interior floor length 10'3"  
Interior floor width 45 3/4"  
Interior height 6'10"  
Cabover interior headroom 36\*\*  
Truck bed height 92 1/2\*\*\*  
Exterior width 93"  
Overall exterior height 104 1/2†  
Fresh water tank 33 gallons  
Grey water tank 13 gallons  
Black water tank 14 gallons  
LPG tanks 2 quantity - 5 gallons each  
Refrigerator 6 cubic feet -  
three-way power mode  
Furnace 18,000 BTUs

**Extended cabover only**  
Exterior length 18'3"  
Center of gravity 58"  
Dry weight 2540 pounds†

\* Footnotes defined on page 16.

The Lance Lite Series' extended cabover with queen-size bed is standard on the 1025. The front cabinets provide extra storage.

The Lance Lite 1025 has the appeal of the traditional American camper floorplan. This 10-foot model adds that needed counter and food preparation space with a convenient food bar, complete full-sized galley with extra counters and drawers, large double-door refrigerator and pull-out pantry. The rear dinette converts into a bed - and there's also room for an optional generator.





# 11' campers



The non-slide 11'6" **Lance 1130** continues to be popular for those who want all the features in a traditional truck camper. Shown here in optional fiberglass. | [page 20](#)

The 11'6" **Lance Slideout 1121**

model with its mid-dinette slideout, open floor space and large dry bath continues to be a best-seller across America. | [page 21](#)



The **Lance Slideout 1161** is one of our two side-door models. At an 11'11" interior floor length, it's our longest camper - and is just what many outdoor enthusiasts want. | [page 22](#)

**new** The all-new-for-2005 11'6" **Lance Max 1181** -

with all-aluminum Lance-Lock construction and sub-floor basement - is quickly becoming one of our flagship models.

With an extremely spacious cabin and every imaginable feature and luxury, it's difficult to believe it's a truck camper. It's not. It's a *Lance Max* truck camper. | [page 23](#)



**new** Lance's newest addition, the 11'6" **Lance Max 1191** - is our other side-entry model. With its unique floorplan and dinette slideout, the interior space is truly incredible. | [page 24](#)



*Lance Slideout 1161 with standard feature Exterior Package graphics - and optional awning, Lance Stor-Mor pod and air conditioning*

**Five 11-foot models, each distinctly different, are the kind of campers that help make Lance America's favorite truck camper. These models offer the convenience and comfort of a motorhome - with the versatility to go anywhere, anytime - to do anything.**

**Key to footnotes within basic spec tables appearing on pages 20-24**

\* Headroom measured as height from cabover floor (without mattress) to highest point in cabover ceiling. \*\* Height measured from camper's truck bed plate to roof (without air conditioning unit, satellite TV antenna or roof storage system) - including the 7 inches for the top of roof ladder. † Height measured from camper's retracted legs to roof (without air conditioning unit, satellite TV antenna or roof storage system) - including the 7 inches for the top of roof ladder. ‡ Dry weight based upon standard model features and doesn't include options, equipment packages or dealer-installed items.



# Wilford

**"My Lance camper is just right for me. It takes me where ever and when ever I want to go. And these days, that's any place and anytime I want."**

**Wilford Brimley**

Internationally-recognized feature film actor | Rancher | Lance owner



11'6" camper

Lance Celebrating 40 years AMERICA'S

# Lance 1130

11'6" dry bath camper with food prep counter

The Lance 1130 has a spacious food counter, extended cabover queen-sized bed, pull-out pantry, U-shaped dinette, plenty of galley storage – and a bath larger than any in this industry. You can really feel the space in this expansive floorplan.



- Interior floor length 11'6"
- Interior floor width 45 3/4"
- Interior height 6'10"
- Cabover interior headroom 38 1/2"
- Truck bed height 94 1/2"
- Exterior width 93"
- Overall exterior height 106 1/2"
- Fresh water tank 40 gallons
- Grey water tank 25 gallons
- Black water tank 24 gallons
- LPG tanks 2 quantity - 7 gallons each
- Refrigerator 6 cubic feet - three-way power mode
- Furnace 20,000 BTUs

**Extended cabover only**  
 Exterior length 19'6"  
 Center of gravity 49"  
 Dry weight 2900 pounds<sup>1</sup>

\* Footnotes defined on page 19.



The roll-out storage drawer – part of the optional Convenience Package – is a great space maker.



The large dry bath has ducted heat, a medicine cabinet and lots of elbow room. We also provide a clothes rod for additional hanging space in the shower – for drip-drying your wet clothes with heat and no mess – from things like playing in the snow.

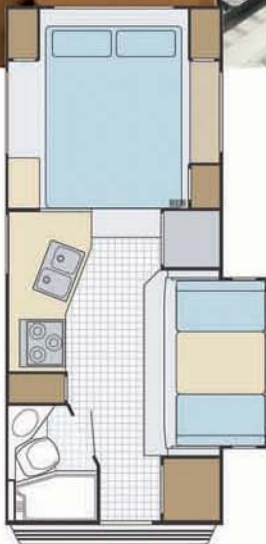




The popular, full-featured Lance Slideout 1121 boasts a spectacular dry bath, large wardrobe and fully-outfitted galley – with massive pots and pan storage under the sink – and extra food storage in the overhead cabinets.

# Lance Slideout 1121

11'6" dry bath camper with dinette on curbside slideout



- Interior floor length 11'6"
- Interior floor width 45 3/4"
- Interior height 6'10"
- Cabover interior headroom 38 1/2"\*
- Truck bed height 94 1/2"\*\*\*
- Exterior width 93"
- Overall exterior height 106 1/2"±
- Fresh water tank 40 gallons
- Grey water tank 25 gallons
- Black water tank 24 gallons
- LPG tanks 2 quantity – 7 gallons each
- Refrigerator 6 cubic feet – three-way power mode
- Furnace 20,000 BTUs

- Extended cabover only**
- Exterior length 19'6"
- Center of gravity 46"
- Dry weight 3260 pounds†



A Lance exclusive – a SoftTouch®-upholstered sofa/bed has the comfort and feel of home furniture. The center section pulls down for lounging or sleeping, and the removable table provides leisurely dining. There are also two pull-out drawers within the seatboxes for additional storage.

\* Footnotes defined on page 19.

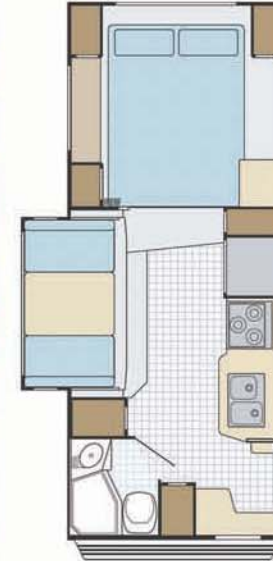


11'11" camper

Lance Celebrating 40 years AMER

# Lance Slideout 1161

11'11" dry bath camper with side entry and dinette on roadside slideout



- Interior floor length 11'11"
- Interior floor width 45 3/4"
- Interior height 6'10"
- Cabover interior headroom 3'
- Truck bed height 94 1/2"\*\*\*
- Exterior width 93"
- Overall exterior height 106 1/2"
- Fresh water tank 35 gallons
- Grey water tank 24 gallons
- Black water tank 16 gallons
- LPG tanks 2 quantity - 7 gallons
- Refrigerator 6 cubic feet - three-way power mode
- Furnace 20,000 BTUs



The Lance Slideout 1161 - with its side door entry - is one of Lance's most spacious campers. With its large skylight in the dry bath, massive galley, and a comfortable driver-side slideout dinette, it's the perfect travel companion. Step right out into your campsite.



- Extended cabover only**
- Exterior length 19'11"
- Center of gravity 43"
- Dry weight 3495 pounds!

\* Footnotes defined on page 19.





# Lance Max 1181

11'6" dry bath camper with dinette, refrigerator and wardrobe on roadside full-wall slideout

QuickTime VR

The new 11'6" Lance Max 1181 is our top-of-the-line camper. A generous dry bath on the passenger's side, large pantry, three spacious drawers, increased counter space – and a full-wall slideout with dinette and deluxe double-door refrigerator.

How was this picture taken? See details on page 11.



- Interior floor length 11'6"
- Interior width 93 3/4"
- Interior height 6'8"
- Cabover interior headroom 44 1/2"
- Truck bed height 101 3/4"
- Exterior width 96 3/8"
- Overall exterior height 112 3/4"
- Fresh water tank 40 gallons
- Grey water tank 30 gallons
- Black water tank 35 gallons
- LPG tanks 2 quantity – 7 gallons each
- Refrigerator 6 cubic feet – three-way power mode
- Furnace 15,000/22,000 BTUs – automatic dual-speed/dual-output

**Extended cabover only**  
 Exterior length 19'7"  
 Center of gravity 39"  
 Dry weight 3690 pounds!



The 1181's dry bath is fully appointed – a medicine chest, linen cabinets, towel racks, and a roomy full-sized shower tub.



Lance's exclusive innovation for the 1181 is this centralized utility bay – with a unique pass-through storage tray running the entire width of the camper – in addition to the standard 48"-long sub-floor pull-out tray.

\* Footnotes defined on page 19.



11'6" camper

Lance® Celebrating 40 years AMERICA'S

# Lance Max 1191 new

11'6" dry bath camper with side entry and dinette slideout on roadside

**The new-for-2005 Lance Max 1191 – our most spacious 11-foot design ever. More floor space. More tank capacity. More storage space – with increased headroom in the cabover sleeping area. And loaded with the most-asked-for features. And with a side entry, step right out into your campsite in style.**



- Interior floor length 11'6"
- Interior floor width 56"
- Interior height 6'8"
- Cabover interior headroom 44 1/2"
- Truck bed height 101 1/4"
- Exterior width 96 3/4"
- Overall exterior height 112 3/4"
- Fresh water tank 40 gallons
- Grey water tank 40 gallons
- Black water tank 35 gallons
- LPG tanks 2 quantity – 7 gallons each
- Refrigerator 6 cubic feet – three-way power mode
- Furnace 15,000/22,000 BTUs – automatic dual-speed/dual-output

- Extended cabover only
- Exterior length 19'7"
- Center of gravity 41"
- Dry weight 3650 pounds!

\*Footnotes defined on page 19.

How was this picture taken? See details on page 11. | QuickTime VR



# matching your truck + camper

## Your truck and camper package

Matching your truck to the right camper is easier through the fresh design of this 2005 edition of *The Truck Camper Buyer's Guide*. All Lance models have been color-tabbed and grouped together by sizes – from shortest to longest by interior foot-length measure – and each product has its own picture page.

Truck manufacturers provide consumers with certain ratings to help determine the capacities of the truck, as manufactured. Some of those ratings are posted on the driver-side door jam, on a label in the glove box, or in the owner's manual or other literature.

If you already own a truck that you intend to use for a camper, it's always wise to take it to a commercial truck scale to determine the actual weight of the truck. That information – along with your truck capacity information – will help you determine the remaining capacities for carrying and/or towing.

Camper weights – both dry and wet – vary depending on what optional equipment you have installed and how full your holding tanks are. Also, take into consideration the weight of passengers, gear and trailer tongue (if applicable).

Truck and camper package handling can be greatly improved by the addition of support equipment like air bags, special truck shocks, and cabover shocks – detailed on page 30. Maintaining maximum tire pressure on quality tires with ratings equal to, or better than, your original tires is also important.

Because Lance is unfamiliar with your specific truck and how you intend to use it, **Lance Camper Manufacturing Corporation makes no warranties or representation – express or implied – as to the performance or reliability of your truck with a Lance camper.**

For complete information and professional guidance on matching your truck to a camper, please consult your Factory Authorized Lance Dealer.

## Nobody beats Lance when it comes to style – inside or out.

We offer a variety of color combinations to complement virtually any late-model truck. Select one that suits your taste.

### Exterior combination color stripes + splash graphics

#### Standard stripes Lance Lite Series | Lance Series



All standard aluminum-sided models – and Lance Lite models with optional Filon fiberglass sides – have two neutral (silver/grey/bronze combination) color stripes placed top **A** and bottom **B**. One of the four exterior color stripe combinations (below) are selected and placed in between these neutral stripes **C**.

#### Standard stripes + splash graphics Lance Slideout Series | Lance Max Series

#### Optional Exterior Package stripes + splash graphics Lance Series



Standard on all Lance Slideout and Lance Max models – and on the optional Exterior Package for Lance Series models – is a neutral (silver/grey/bronze combination) color stripe placed at the top **A**. One of the four exterior combinations (below) are selected for splash graphics on the side of the camper body **B** and on the side of the cabover **C**.

### Color stripe combinations



### Interior carpet + upholstery

#### Standard Lance Lite\* | Lance | Lance Slideout



#### Standard Lance Max

#### Decor Package Lance Lite | Lance | Lance Slideout



**About center of gravity** In the basic specs section on all the individual camper product pages, you'll see a reference to "center of gravity" (CG). In physics, the CG is the point where the mass of a body is concentrated, and if suspended at that point, would balance front and rear. According to Federal regulation, the CG location in a truck and camper combination is measured under a specific loading condition – and from **the point that contacts the rear end of the truck bed forward**. This is the method legally prescribed to us – and indeed all truck and truck camper manufacturers in America – in accordance with Section 575.103(e) of the US Federal Motor Vehicle Safety Standards (FMVSS-R575).



\* Lance Lite models don't have horizontal welts on cushions. | The photography on this page is for illustrative purposes. Colors and textures depicted here may differ from actual product due to the limitations of photography and printing.



# standard features + options

Convenience and Decor Packages are standard on **Lance Max Series** models.

## EXTERIOR

Four choices of color-coordinated graphics  
Sliding pass-through window  
Front rub strips  
Ladder to roof

These first 6 items standard on all models

	815 Lite	835 Lite	845 Lite	820 Lance	821 Slideout	881 Max	915 Lite	920 Lance	981 Max	1010 Lance	1025 Lite	1030 Lance	1130 Lance	1121 Slideout	1181 Max	1161 Slideout	1191 Max
Common-keyed exterior compartment doors																	
Radius entry door																	
White baked enamel aluminum exterior	▲	▲	▲	▲			▲	▲		▲	▲	▲	▲				
Ball screw camper jacks	○	▲	▲				▲			▲							
Radius sliding windows with screens	▲	▲	▲				▲			▲							
Insulated storage compartment doors	▲	▲	▲				▲			▲							
Electric jacks with wireless remote control	○	○	▲	▲	▲		○	▲	▲	○	▲	▲	▲	▲	▲	▲	▲
Slide-out bumper storage tray			▲	▲	▲		▲	▲	▲	▲	▲	▲	▲	▲	▲	▲	▲
Dark tint safety glass radius torque windows			▲	▲	▲		▲	▲	▲	▲	▲	▲	▲	▲	▲	▲	▲
Laminated safety glass front cabover window	○	▲	▲	▲	▲		▲	▲	▲	▲	▲	▲	▲	▲	▲	▲	▲
Outside low-pressure LPG connection			▲	▲	▲		▲	▲	▲	▲	▲	▲	▲	▲	▲	▲	▲
Saf-T-Vue® rear window*	○	○	○	▲	▲		○	▲	▲	○	▲	▲	▲	▲	▲	▲	▲
Exterior wash station with shutoff valves*	○	○	○	▲	▲		○	▲	▲	○	▲	▲	▲	▲	▲	▲	▲
Insulated radius storage compartment doors			▲	▲	▲		▲	▲	▲	▲	▲	▲	▲	▲	▲	▲	▲
License plate holder and light	○	○	▲	▲	▲		○	▲	▲	○	▲	▲	▲	▲	▲	▲	▲
Filon® fiberglass walls, wings and risers*			▲	▲	▲		○	○	○	○	○	○	○	○	○	○	○
Heavy-duty aluminum rear bumper with dual position folding or double step and integrated, sealed tail lights			▲	▲	▲		▲	▲	▲	▲	▲	▲	▲	▲	▲	▲	▲
Slideout cover				○	○			▲						○	○	○	○
Large diameter tube Phat™ ladder to roof	▲	▲	▲	▲	▲		▲	▲	▲	▲	▲	▲	▲	▲	▲	▲	▲
One-inch-thick radius insulated storage compartment doors				▲				▲						▲	▲	▲	▲
Radius 24-inch entry door with pull-shade and screen door				▲				▲						▲	▲	▲	▲
Yakima® roof tracks	▲	▲	▲	▲	▲		▲	▲	▲	▲	▲	▲	▲	▲	▲	▲	▲
Maggie Rack® roof siderails				▲				▲						▲	▲	▲	▲
Side storage compartment(s) with strut-assisted lift-doors				▲				▲						▲	▲	▲	▲
Locked, central utility bay at roadside lift-skirt containing hookup services (110-volt AC power cable, slide-out tray for dual batteries, city water, low-point drains, water tank drain, holding tank valves, wash station, and park cable TV)				▲				▲						▲	▲	▲	▲
Swing-out jack brackets for dual rear-wheel trucks		○	○	○	○	○	○	○	○	○	○	○	○	○	○	○	○
Aluminum scissor entry step – four steps	○	○															
Storm windows				○	○	○	○	○	○	○	○	○	○	○	○	○	○
Rear door awning			○	○	○	○	○	○	○	○	○	○	○	○	○	○	○
Crank-out rear door awning				○				○						○			
Side crank-out awning	○	○	○	○	○	○	○	○	○	○	○	○	○	○	○	○	○
Side roll-out awning	○	○	○	○	○	○	○	○	○	○	○	○	○	○	○	○	○
Exterior utility lights*	○	○	○	○	○	○	○	○	○	○	○	○	○	○	○	○	○
Yakima® roof rack system	○	○	○	○	○	○	○	○	○	○	○	○	○	○	○	○	○
Short bed modification skirts	○																

## INTERIOR + DECOR

Fingertip-positive-catch cabinet hardware  
Hardwood-framed cabinet doors with decorator hardware  
Lined cabinet door openings  
All wooden drawers with metal guides  
Mini-blinds in galley  
No-wax vinyl floor covering

These first 6 items standard on all models

	815 Lite	835 Lite	845 Lite	820 Lance	821 Slideout	881 Max	915 Lite	920 Lance	981 Max	1010 Lance	1025 Lite	1030 Lance	1130 Lance	1121 Slideout	1181 Max	1161 Slideout	1191 Max
Built-in full-length mirror on bathroom door	▲	▲	▲	▲			▲	▲	▲	▲	▲	▲	▲	▲	▲	▲	▲
Raised-panel overhead cabinet doors				▲			▲	▲	▲	▲	▲	▲	▲	▲	▲	▲	▲
Aromatic cedar in wardrobe				▲			▲	▲	▲	▲	▲	▲	▲	▲	▲	▲	▲
TV cabinet viewable from dinette and cabover bed				▲			▲	▲	▲	▲	▲	▲	▲	▲	▲	▲	▲
Cabover access steps				▲			▲	▲	▲	▲	▲	▲	▲	▲	▲	▲	▲
Pleated shades on cabover window				▲			▲	▲	▲	▲	▲	▲	▲	▲	▲	▲	▲
Full-wall slideout room on 12-volt electric slideout mechanism with manual override						▲		▲						▲			
Sub-floor long slide-out storage tray for extra length items						▲		▲						▲			
Large, openable, double glazed skylight/escape hatch with integrated lighting, ventilation screen and black-out shade						▲		▲						▲			
13,500-BTU Coleman™-Mach™ air conditioner	○	○	○	○	○	○	○	○	○	○	○	○	○	○	○	○	○
13,500-BTU Coleman™-Mach™ air conditioner with wall control thermostat				○	○	○	○	○	○	○	○	○	○	○	○	○	○
Entertainment package featuring AM/FM/CD/DVD/MP3 stereo player with four speakers, remote control and 15-inch LCD flat-screen TV (that replaces the standard TV slide-out shelf)				○	○	○	○	○	○	○	○	○	○	○	○	○	○
AM/FM/CD stereo player with four speakers	○	○	○	○	○	○	○	○	○	○	○	○	○	○	○	○	○
Stereo-ready wiring for four speakers and antenna	○	○	○	○	○	○	○	○	○	○	○	○	○	○	○	○	○
Exhaust only Fan-Tastic® vent with rheostat	○	○	○	○	○	○	○	○	○	○	○	○	○	○	○	○	○
Fan-Tastic® reversible fan vent with thermostat and double glazed lid				○	○	○	○	○						○	○	○	○
TV antenna with 12-volt amplified outlet	○	○	○	○	○	○	○	○	○	○	○	○	○	○	○	○	○
Satellite dish with TV antenna and 12-volt amplified outlet	○	○	○	○	○	○	○	○	○	○	○	○	○	○	○	○	○
Carpet kit*	○	○	○	○	○	○	○	○	○	○	○	○	○	○	○	○	○

▲ = standard feature  
○ = option

See your Lance dealer for details on options and standard features.

\* = an item that's included as part of an options package see page 28

## CONSTRUCTION + INSULATION

One-piece TPO (thermoplastic polyolefin) white roof with 12-year warranty  
Double exterior sealant process throughout  
Metal-reinforced corners for jack mounting  
Front jack brackets bolted to steel  
Reinforced tie-down brackets  
Laminated and insulated floor, lower body and cabover bed

These first 7 items standard on all models

	815 Lite	835 Lite	845 Lite	820 Lance	821 Slideout	881 Max	915 Lite	920 Lance	981 Max	1010 Lance	1025 Lite	1030 Lance	1130 Lance	1121 Slideout	1181 Max	1161 Slideout	1191 Max
Laminated and insulated reinforced roof																	
Insulated holding tank cover																	
Laminated solid block foam insulation throughout	▲	▲	▲	▲	▲	▲	▲	▲	▲	▲	▲	▲	▲	▲	▲	▲	▲
Welded .060-inch aluminum framing throughout							▲	▲							▲	▲	▲
Structural components assembled with LanceLock™ interlocking aluminum extrusions for superior strength and seal							▲	▲							▲	▲	▲
Stainless steel tie-down brackets	▲	▲	▲	▲	▲	▲	▲	▲	▲	▲	▲	▲	▲	▲	▲	▲	▲

## DINETTE + SLEEPING ACCOMMODATIONS

Large dinette with reversible sofa cushions  
Dinette area and sofa cushions convert into a bed

These first 3 items standard on all models

	815 Lite	835 Lite	845 Lite	820 Lance	821 Slideout	881 Max	915 Lite	920 Lance	981 Max	1010 Lance	1025 Lite	1030 Lance	1130 Lance	1121 Slideout	1181 Max	1161 Slideout	1191 Max
Designer mattress cover																	
Lightweight sliding table with leg stabilizer	▲	▲	▲	▲	▲	▲	▲	▲	▲	▲	▲	▲	▲	▲	▲	▲	▲
Bedroom reading lights	▲	▲	▲	▲	▲	▲	▲	▲	▲	▲	▲	▲	▲	▲	▲	▲	▲
Queen-size innerspring mattress	○	○	○	○	○	○	○	○	○	○	○	○	○	○	○	○	○
Bedroom privacy curtain	▲	▲	▲	▲	▲	▲	▲	▲	▲	▲	▲	▲	▲	▲	▲	▲	▲
Folding cabover privacy shade*				○	○	○	○	○	○	○	○	○	○	○	○	○	○
Ducted heat outlet in cabover				▲	▲	▲	▲	▲	▲	▲	▲	▲	▲	▲	▲	▲	▲
Extended cabover queen bed area	○	▲	▲	▲	▲	▲	▲	▲	▲	▲	▲	▲	▲	▲	▲	▲	▲
Indirect lighting in overhead skylight assembly							▲	▲							▲	▲	▲
Wrap-around SoftTouch™ upholstered sofa/bed with two pull-out drawers within seatboxes									○						○	○	○
Two twin-size innerspring beds in extended cabover	○	○	○	○	○	○	○	○	○	○	○	○	○	○	○	○	○
Folding bunk bed/overhead storage	○	▲	▲	▲	▲	▲	▲	▲	▲	▲	▲	▲	▲	▲	▲	▲	▲
Child restraint system	○	○	○	○	○	○	○	○	○	○	○	○	○	○	○	○	○
Vinyl bunk pads	○	○	○	○	○	○	○	○	○	○	○	○	○	○	○	○	○
Bunk cargo net	○	○	○	○	○	○	○	○	○	○	○	○	○	○	○	○	○

Convenience and Decor Packages are standard on **Lance Max Series** models.







## Lance Lite Series

### All-Weather Package

- Storm window in front cabover
- Insulated escape hatch cover
- Insulated bathroom skylight cover
- Insulated roof vent doors
- Additional cabover bed insulation
- Insulated battery and LPG tank compartments
- Water heater bypass/winterizing valve
- Enclosed, insulated and heated holding tanks
- Dual LPG tanks on 835 and 845 models

### Convenience Package

- Saf-T-Vue® window
- Outside shower
- Electric jack pre-wire with plugs
- Rear docking lights
- Battery disconnect switch
- Battery separator
- Exterior lighting
- Exterior 110-volt AC electrical outlet at patio area
- Sink cover
- Re-light water heater

### Decor Package

- Deluxe upholstery and valances
- Carpet kit

## Lance Series | Lance Slideout Series

### All-Weather Package

- Storm window in front cabover
- Insulated escape hatch cover
- Insulated bathroom skylight cover
- Insulated roof vent doors
- Additional cabover bed insulation
- Insulated battery and LPG tank compartments
- Water heater bypass/winterizing valve
- Ducted heat to holding tanks

### Convenience Package

- Rollout storage drawer under dinette (except Lance 920)
- Wardrobe light
- Battery disconnect switch
- Exterior utility lights
- Entry light switch in dinette
- Magazine rack
- Spice rack
- 12-volt DC electrical outlet in dinette
- Battery separator
- Rear docking lights
- Momentary entry light switch
- DSI (direct spark ignition) water heater
- Exterior and interior telephone jacks
- Exterior RCA jack outs for stereo hookup at curbside
- Black tank flush device

### Decor Package

- Deluxe upholstery and valances
- Day/night shades with blackout feature in cabover
- Day/night shades in dinette
- Indirect cabover lighting
- Single-lever faucet
- Rear door valance and shade
- Folding cabover privacy door
- Laminated stainless-steel-appearance refrigerator insert panels
- Carpet kit

### Exterior Package

- Deluxe graphics
- Smooth Filon® fiberglass walls, wings and risers
- White ladder
- Deluxe bumper trim

## Lance Max Series

All-Weather, Convenience and Decor Packages are standard on **Lance Max** models – except the 881.

### Decor Package with sofa/bed

- Wrap-around SoftTouch® upholstered sofa/bed (that replaces dinette) and two pull-out drawers within seatboxes – as pictured on page 21
- Deluxe upholstery and valances
- Day/night shades with blackout feature in cabover
- Day/night shades in dinette
- Single-lever faucet
- Rear entry door shade
- Folding cabover privacy door
- Laminated stainless-steel-appearance refrigerator insert panels
- Carpet kit



### lots of storage

Additional inside and outside storage space is designed in Lance's slideout models.



### privacy shade

This folding cabover privacy shade is part of the optional Decor Package available on Lance Slideout and Lance Series models.

**There are many options available. See your Lance dealer for complete details.**

### flat-panel TV and

### entertainment package

The new Lance-exclusive optional entertainment package includes a 15-inch flat screen LCD TV and AM/FM/CD/DVD/MP3 stereo player with LCD display, four speakers and remote.

The flat-screen TV's articulated swing-arm lets you comfortably watch TV in bed or in the dinette area.



### roll-out storage



The roll-out storage drawer – part of the optional Convenience Package – is a great space maker. It's available on all Lance Slideout and Lance Series models (except the Lance 920).



A new standard feature in all Lance, Lance Slideout and Lance Max Series models is the outside LPG (propane) connector.

The roofs of all Lance campers are engineered with superior, single-piece, marine-grade TPO (thermoplastic polyolefin) – and there are many different options for equipment that can be mounted on roofs. Pictured here is a TV antenna/satellite dish combination, air conditioning unit, Yakima® rack components, rear-view observation camera, and awnings over the entry and slideout.

### TPO roof and roof-mounted equipment



### spacious galleys

Most Lance galleys feature a special pull-out pantry allowing easy access to groceries. There's also laminated stainless-steel-appearance panels on the refrigerator and oven doors (with Decor Package) – new white appliances – and easy-to-read, eye-level systems monitor panels.

# selected highlights



**Enhance your outdoor fun with these Lance Custom Design™ accessories.**

Specially made for us to meet our rigorous requirements for quality, durability, performance and value. Available as after-market add-ons through your Lance dealer.



**new Lance Stor-Mor™ storage pod** Get 30 cubic feet of extra storage space atop your Lance in a molded hard-shell ABS case with piston-strut-assisted hinge. Easily attaches to Yakima® rack systems. | Part XC300.

**Lance Family Room™** This screened enclosure can be added to a side awning, providing a screened-in area. Roll-down panels add privacy. Available for most Lance models. | Part number varies by camper model.

**Lance camper cover** Protect your investment with this specially tailored, heavy-duty, breathable Tyvek® cover. | Part number varies by camper model.

**Lance camper dolly** Easily move your camper around your property – or for extended storage. Made of welded and bolted heavy-gauge steel. | Part DD101.

**Lance carpet kit** High-quality, custom-fit carpeting adds comfort and warmth when needed. Part of the optional Decor Package and precisely matches your camper. | For 8- or 9-foot campers, Part A331. | For 10- or 11-foot campers, Part A332.

**new Lance Bed-Maid™ sleep system** The Bed-Maid is much more than a comforter. It's a luxurious dual-insulated sleep system – complete with fitted sheets that Velcro® in place. Now making a bed is easy! | Part IU651.

**new Lance Gourmet Camp Grilles™** For fast, restaurant-style grilling. Perfect for iron cookware. Commercial-grade stainless steel with grill, griddle, broiler pan and no-blowout baffle. Smoker accessory available, too. | 23,000-BTU single-burner model, Part LCG-5. | 60,000-BTU double-burner model, Part LCG-10.

**new "Getting Started"** New owner DVD videos. | Lance Max models, Part MM311DVD. | All others, Part MM310DVD.

**Lance cargo net** For securing items in the cabinets above your dinette area. Available on models with fold-down storage. | Part IM907-10.

**Lance child restraint system with bunk pads** Great for kids. Available on models with slideouts. | Part number varies by camper model.



Lance Stor-Mor pod



Lance Family Room



Lance carpet kit



Lance Bed-Maid sleep system

Lance cargo net



Fan-Tastic roof vent



Satellite dish



New owner DVD videos



Lance Family Room



Lance 23,000-BTU and 60,000-BTU Gourmet Camp Grilles



Lance child restraint system



ASA/AudioVox rear-view camera



Onan generator



Lance camper cover



Lance camper dolly

**ASA/AudioVox rear-view observation camera monitor** is a removable in-cab video monitor with flexible mounting capabilities. It includes a built-in speaker, two camera (A/V) inputs with A/B selector, NTSC- and PAL-compatible backlit controls, day/night brightness modes, standby/audio on-off trigger wiring options and on-screen display menu controls. | Part ET152.



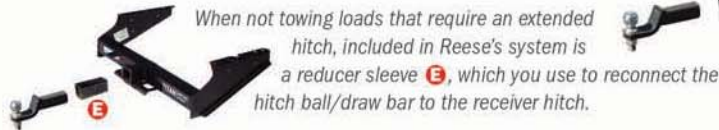
ASA/AudioVox rear-view camera monitor



# dealer-installed support equipment the ultimate ride

Installation of this equipment by your Factory Authorized Lance Dealer is highly recommended to ensure the most enjoyable ride possible – and to improve the drivability and handling of your entire truck and camper package.

**Reese® Titan™ Class V hitch/extension system** increases your towing capabilities over a stock factory hitch – and is the strongest, most reliable towing equipment system we've found. It's comprised of four basic components – a Class V receiver hitch **A**, a Class V hitch box extension **B**, a trailer wiring harness **C** and safety chains **D**. The Class V receiver hitch is bolted to the underside of your truck frame, replacing your original receiver hitch.



When not towing loads that require an extended hitch, included in Reese's system is a reducer sleeve **E**, which you use to reconnect the hitch ball/draw bar to the receiver hitch.

**ASA/AudioVox® rear-view observation camera **F**** is shown and described on page 29 – and works in conjunction with the in-cab, rear-view camera monitor **P**.

**Lance/Happijac® frame-mount anchoring system **G** – and Lance Custom Design™ front and rear centering guides **H**** go inside the truck's bed to assist with aligning a camper to center within the bed. They also help prevent a camper from moving and rubbing the truck bed while driving.



**Happijac front and rear turnbuckles **I**** The safest and strongest on the market, these chrome-plated anchors and tie-downs are designed to eliminate bulky, unsightly or dangerous protrusions. The front turnbuckles are spring-loaded to absorb all those bounces in the road.



**Air Lift® air bags **J**** level the truck and camper by transferring the rear axle load forward. They also increase stability. Attached to an optional air compressor **K**, their pressure can be adjusted for different road conditions (right-to-left/front-to-back). We recommend them for all campers.



**Air Lift Air-On-Demand™ dual in-cab control **L**** displays the air pressure of the Air Lift air bags and Rancho RS-9000X shocks. Switches on the control panel activate the compressor, pumping air and inflating them to the desired air pressure.

**Rancho® RS-9000X™ front and rear shocks **M**** Adjustable shocks are a great asset for improving ride under all conditions. They add more stability in windy conditions or on rough roads, and improve ride substantially on seamed highways. Rancho's RS-9000X shocks have proven to do an excellent job and are easily adjustable. For added convenience, a dual in-cab control kit (Air Lift's Air-On-Demand) is available so your ride can be fine-tuned while driving.



**Lance Custom Design foam connecting boot **N**** is an exclusive option created by Lance. It compresses between your truck and camper, providing a convenient passage and way to communicate between the truck and camper through the sliding windows. Available for most trucks.

**Lance Custom Design cabover shock system **O**** These Lance-exclusive shocks attach to the cabover and truck to reduce the impact of up-and-down motion created by irregular road surfaces. Your truck already has large-diameter shock absorbers to dampen the motion of the vehicle. These specially designed, aircraft-quality shocks do a remarkable job of smoothing out the camper ride. Stainless steel quick-release connector brackets on both ends make taking them on or off a breeze.



**ASA/AudioVox rear-view observation camera monitor **P**** is shown and described on page 29.



# camper hitch systems

**One of the many advantages to choosing a Lance truck camper as your RV is the ability to tow an additional trailer.**

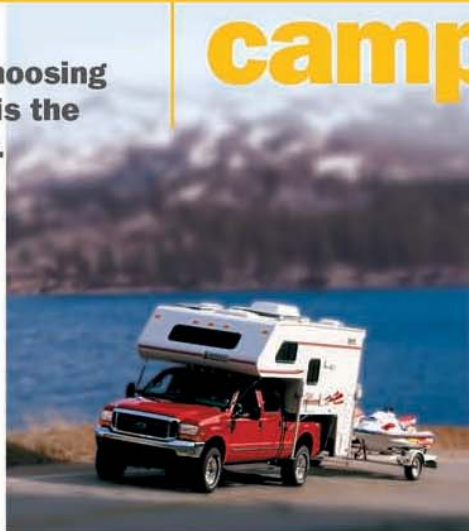
When towing behind a Lance camper that comes with a rear camper bumper, extending the hitch from the truck rearward to the camper bumper is necessary.

The method Lance recommends involves a truck-mounted receiver hitch and hitch box extension (as pictured on the opposite page). A draw bar with hitch ball is inserted into the hitch box extension, the same way it would be inserted into the receiver hitch itself.

Reese manufactures the Titan Class V receiver hitch and hitch box extension specifically for truck camper applications. It replaces standard truck factory receivers (which are usually only Class III- or IV-rated, and generally inadequate) and substantially increases your towing capacity. The other important benefit is that the Reese Titan Class V system doesn't require you to attach the receiver hitch or hitch box extension to the camper. The hitch box extension can be in place when loading or unloading your camper.

For very heavy loads, the hitch box extension in combination with a weight-equalizing hitch can be used. The chart at the right gives capacities for Reese's Titan Class V hitch box extensions.

Always observe your truck's tow ratings – and the advice of your Factory Authorized Lance Dealer.



## Capacities for Reese® Titan™ Class V hitch box extensions

Lance camper model	Weight carrying/ tongue weight	Weight distributing/ tongue weight	Length of Reese Titan hitch box extension
<b>Lance Lite 845</b> short bed	<b>6000 pounds/ 600 pounds</b>	<b>8000 pounds/ 800 pounds</b>	<b>21"</b>
<b>Lance Lite 915</b>			
<b>Lance 820</b> short bed			
<b>Lance 920</b>			
<b>Lance Slideout 821</b> short bed			
<b>Lance Max 881</b>			
<b>Lance Lite 1025</b>	<b>4500/450</b>	<b>6000/600</b>	<b>34"</b>
<b>Lance 1010</b>			
<b>Lance Max 981</b>			
<b>Lance 1030</b>	<b>4500/450</b>	<b>6000/600</b>	<b>41"</b>
<b>Lance 1130*</b>			
<b>Lance Slideout 1121*</b>			
<b>Lance Max 1181*</b>			
<b>Lance Max 1191</b>			
<b>Lance Slideout 1161</b>	<b>4000/400</b>	<b>6000/600</b>	<b>48"</b>

\*Dealer modifications required. Consult your Factory Authorized Lance Dealer for professional advice and proper equipment installation. All weights, dimensions and capacities are approximate values. Specifications subject to change without notice.

**A camper's electrical system** is attached to a power panel, which accepts both 12-volt DC and 110-volt AC current. When a camper is plugged into household current (110 volts AC) at a campground, a built-in converter changes AC current to 12 volts DC. Your camper's furnace fan, range hood, water pump and lights are all 12-volt DC appliances.

The power panel also distributes 110-volt power to the refrigerator, microwave and to the 110-volt AC outlets, so you can use virtually any household appliance. It also serves as a charger, keeping the camper battery fully energized for the times you're not plugged into a 110-volt power supply.

When you're on the road, the alternator in the truck can distribute power to both the truck battery and the camper battery. The camper battery operates at the 12-volt appliances

when the camper isn't plugged into a 110-volt source.

In many models, an LPG-powered (propane-powered)

generator may be ordered. Just push the button and, in a few seconds, you'll have power to operate your microwave, air conditioner, or almost any other 110-volt appliance – plus power for the camper's built-in charging system.

LPG (liquefied petroleum gas – or propane) is the fuel that powers the range/oven, furnace, water heater, and, if installed, the generator. Refrigerators can be powered three different ways.

Because your optional dealer-installed camper battery can be wired to the truck alternator, it will recharge while driving the truck. However, unless you're on-the-move (and that's not always practical) – solar energy is a terrific way to keep your battery charged. With an optional 50-watt-output solar panel with built-in regulator, recharging your battery is silent, automatic and very practical.

Lance factory-installed panels have a red LED indicator light is conveniently located, indicating when the solar panel is producing power.

Solar panels are very useful in colder climates, where the furnace fan can draw down a battery in 24 to 48 hours.

Your Factory Authorized Lance Dealer can answer any questions you may have about power in a Lance camper.

Optional 50-watt-output solar panel



## camper power

## FREE Coach-Net® RV motor club membership



**24-hour emergency services and roadside assistance**

Your Factory Authorized Lance Dealer is the first – and possibly the best – source of information and warranty service for your Lance camper.

However, we know there's times when you're not close to your dealership, or it's late at night, when things go wrong. Maybe you just need technical advice, help with a truck problem, have a flat tire – or, yes, maybe even ran out of gas.

How do you find a Lance dealer or service center to get you going again promptly?

All Lance campers come with a free one-year membership in the Coach-Net RV motor club for the first year after purchase.

Think of Coach-Net as AAA for your RV. They provide round-the-clock towing, fuel delivery, tire changes, jump starts and lockout services – also nationwide trip routing, and more.

Outdoor adventures are about having fun.

With Lance's free first-year Coach-Net membership, they are.



come visit us online

# LanceCamper.com

**Come visit LanceCamper.com and get more in-depth information - Lance product updates, news and technical FAQs.**

**Constantly being updated, LanceCamper.com is the most comprehensive website on truck campers there is - devoted solely to the most versatile and convenient type of RV available anywhere, at any price - a high-quality Lance camper!**

©2005 Lance Camper Manufacturing Corporation (LCMC). All rights reserved. Lance, the Lance logomark, America's Favorite Truck Camper, The Truck Camper Buyer's Guide, The SUV Of RVs, Lance Lite, Lance Slideout, Lance Max, Lance Custom Design, Lance Stor-Mor, Lance Family Room, Bed-Maid, LanceLock, and other exclusive Lance product names, marks or designations are trademarks, service marks or registered trademarks of LCMC. All other marks are property of their respective owners. All product information, graphics and photography included in this brochure were as accurate as possible at the time of printing. Subsequent refinements during the model year may be evident in the actual product. LCMC reserves the right to change prices, colors, materials, equipment and specifications without notice - as well as to add, modify or discontinue models shown in brochures. All weights, fuel and liquid capacities are approximate and dimensions are nominal. LCMC has designed its truck camper models to provide a variety of potential uses for owners. Each model features optimum living, storage, fluid, seating and sleeping capacities. Though each owner enjoys this potential, ultimately, it's that purchaser's sole responsibility to select the proper Lance camper model and support equipment appropriate to their truck without exceeding safe weight operating capacities. Your Factory Authorized Lance Dealer can advise you of the operating perimeters for your particular situation - and can confirm prices and product specifications material to your purchase decision. Produced by LCMC Marketing/Charlie Sweeney, Creative Services Manager. Cover photo by Bruce W. Smith. Litho in USA. Second printing. CS/1204



LCMC CERTIFIES COMPLIANCE WITH ALL FEDERAL AND STATE ELECTRICAL, PLUMBING, HEATING AND FIRE SAFETY STANDARDS. ESTABLISHED FOR RECREATIONAL VEHICLES AS A MEMBER OF RVIA (RECREATION VEHICLE INDUSTRY ASSOCIATION).

Lance Camper Manufacturing Corporation proudly endorses



**Remember, there's a Lance just right for you - and a Lance dealer nearby ready to answer all your questions. Thanks for your interest in Lance. Happy camping!**

**Your Factory Authorized Lance Dealer**



**Lance Camper Manufacturing Corporation**  
43120 Venture Street | Lancaster California 93535-4510 USA | 661 949 3322