

TIFFIN

2024

CLASS-A

# ALLEGRO BREEZE





## What's New Summary - Allegro Breeze

### WHAT'S NEW

---

- Alpaca and Landscape Upholstery Fabrics
- White Ceiling Panels

Premium Paint System



Our eight-step, full-body paint system features premium grade paints sealed with three layers of clear coat with ultraviolet protection. An additional layer of high-performance film protects the front of the coach and select areas.

Images shown are representations of paint layouts only and do not reflect all exterior features or options. Colors shown may slightly differ from colors on actual product.



G7 FIRE OPAL



G7 FROSTED GRANITE



G7 SILVER SAND



G7 ROCKY MOUNTAIN BROWN



G7 SPICED JAVA

# 33 BR

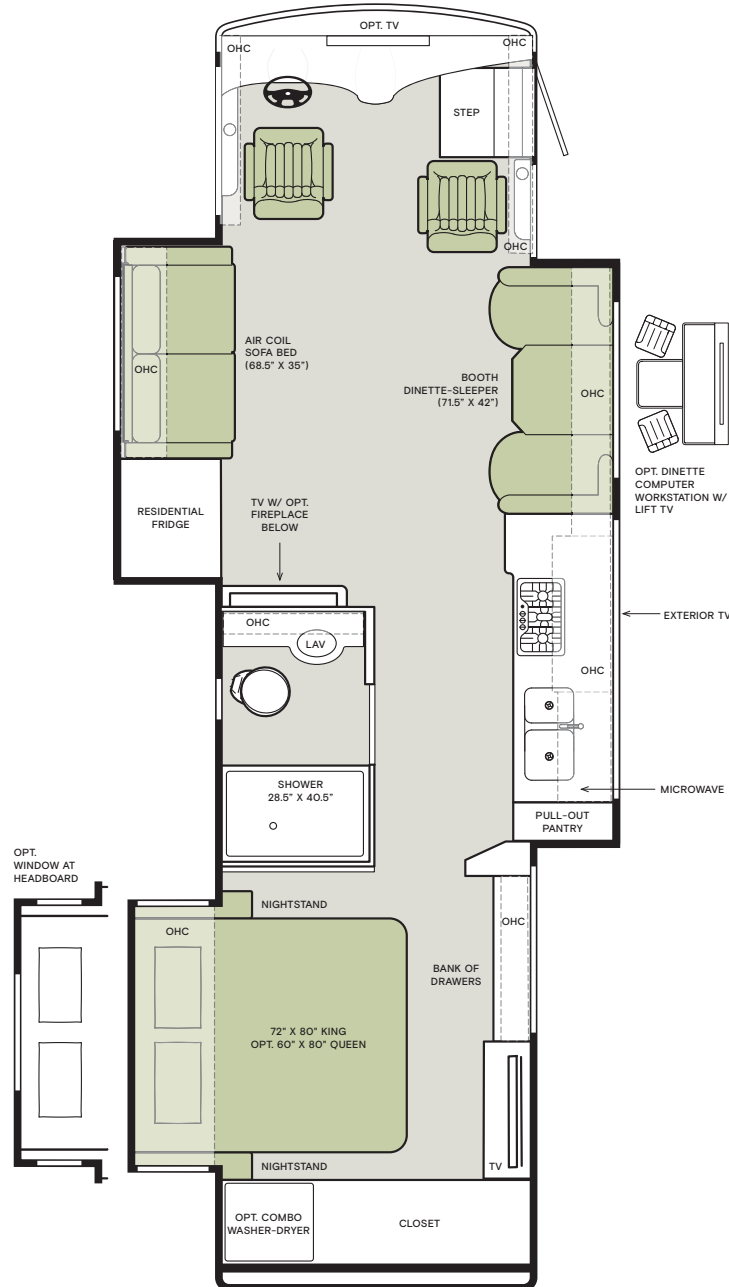


The design of every Allegro Breeze floor plan must meet four essential criteria: Maximum space, Optimal organization, Relaxation plus, and Elegant atmosphere. Tiffin's MORE Plans offer your family the most comfortable layout for life on the road.

If optional furniture combinations are selected, window locations may vary from diagram shown.

All options may not be available in every model. Because of progressive improvements and specifications, standard and optional equipment are subject to change without notice or obligation.

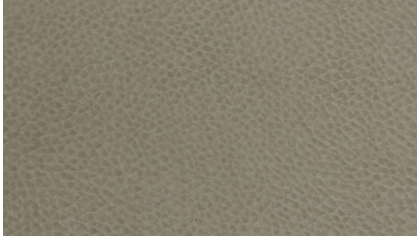
For a complete and up-to-date list of available options and specifications, visit [tiffinmotorhomes.com](http://tiffinmotorhomes.com).



## Interior Décor

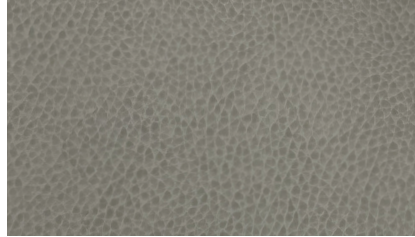
Make your experience on the road all your own. Express yourself by choosing the interior appointments such as cabinet finishes, flooring, and décor ensembles for every part of your motorhome. In the 2024 Allegro Breeze, you'll be able to travel in style no matter where your adventure takes you.

### FURNITURE



ALPACA

NEW



LANDSCAPE

NEW

### CABINETS & WINDOW TREATMENT



SANDSTONE



SHADOW

### FLOORING



SEA GRASS MATTE FINISH TILE



MONTEANO LUXURY VINYL TILE

### WAYPOINT



BACKSPLASH



COUNTERTOP



LIVING ROOM



MASTER SUITE

## Specifications, Features, and Options

KEY : S : Standard Feature | O : Optional Feature; Additional costs may apply | D : Dependent; Availability is dependent on selection of another option | — : Not Available

WEIGHTS AND MEASURES		33 BR
<b>DIMENSIONS</b>		
Overall Length (approx.) <sup>1</sup>		33' 2"
Wheel Base		202"
Overall Width <sup>1</sup>		95"
Overall Height		11' 8"
Minimum Garage Height		12'
Interior Height		78"
Interior Width		90"
Square Footage (approx.) <sup>2</sup>		295
Basement Storage (cubic feet, approx.)		94
<b>WEIGHT LIMITS</b>		
GAWR—Front (pounds)		9,500
GAWR—Rear (pounds)		16,000
GVWR (pounds)		25,500
Maximum Trailer Weight (pounds) <sup>3</sup>		5,000
Hitch Rating (pounds)		5,000
GCWR (pounds)		30,500
<b>CAPACITIES</b>		
Fuel Tank (gallons)		70
DEF Tank (gallons) <sup>4</sup>		10
Fresh Water (gallons)		70
Grey Water (gallons)		50
Black Water (gallons)		33
LPG Tank (gallons) <sup>5</sup>		20
<b>QUANTITIES</b>		
Number of Slideouts		3
Sleeping Areas <sup>6</sup>		3 to 4
Sleeping Areas <sup>6</sup>		2 to 3
Seat Belts <sup>6</sup>		4 to 6
Seating Capacity <sup>6</sup>		6 to 8

<sup>1</sup> The approximated coach width and length does not include side-view mirrors and rear ladders.

<sup>2</sup> Square footage was calculated with the slide-outs fully extended.

<sup>3</sup> Maximum trailer weight is dependent on the loading and towing variables which include the GVWR, GAWR, and GCWR, as well as adequate trailer brakes.

<sup>4</sup> Diesel Exhaust Fluid (DEF) is the active component used in Selective Catalytic Reduction (SCR) engines to reduce nitrogen oxide emissions by 90% to meet EPA standards.

<sup>5</sup> LPG tank can only be filled to 80% capacity.

<sup>6</sup> Dependent on furniture and dinette options.

CHASSIS		
<ul style="list-style-type: none"> <li>PowerGlide® Rear Engine Diesel Chassis</li> <li>Cummins® B6.7 340 HP Diesel Engine with 700 lb-ft Torque<sup>1</sup></li> <li>130-Amp Alternator</li> <li>Allison® 2500 MH 6-speed Automatic Transmission with Lock-up Torque Converter</li> <li>Aluminum Wheels</li> <li>Front and Rear 265/70R 19.5 Tires</li> <li>(2) 12-Volt Flooded Lead-Acid Chassis Batteries</li> </ul>	<ul style="list-style-type: none"> <li>Valid™ Air Leveling System</li> <li>ZF Independent Front Suspension</li> <li>Reyco® Granning® Air Ride Rear Suspension</li> <li>Custom Tuned Koni Shock Absorbers</li> <li>Rear Radiator</li> <li>Front Disc Brakes and Rear Drum Brakes</li> <li>Full Air Brake System with Automatic Slack Adjusters</li> </ul>	<ul style="list-style-type: none"> <li>Single Stage Variable Geometry Turbocharger (VGT) Engine Brake</li> <li>Manual Parking Brake</li> <li>Tire Pressure Monitoring</li> <li>Adaptive Cruise Control</li> <li>Automatic Traction Control</li> <li>Collision Mitigation with Forward Warning and Active Braking</li> <li>Electronic Stability Control</li> </ul>

<sup>1</sup> Peak horsepower achieved at 2,600 RPM. Peak torque achieved at 1,600 RPM.

ELECTRICAL		
<ul style="list-style-type: none"> <li>Liquid Propane (LP) Coach<sup>1</sup></li> <li>Spyder Controls Multiplex System Featuring App Compatibility</li> <li>6.0-Kilowatt Onan® Quiet Diesel Generator</li> <li>2,000-Watt Pure Sine Wave Inverter with Auto-Gen Start and Interior Remote Control<sup>2</sup></li> <li>Battery Slide-out Tray</li> <li>Extraordinaire™ Air Conditioning System</li> </ul>	<ul style="list-style-type: none"> <li>50-Amp Shore Power</li> <li>(2) 30,000-BTU Ducted Furnaces</li> <li>Prep for Satellite</li> <li>Auxiliary Solar Port</li> <li>Blu-ray™ Player</li> <li>Satellite Receiver</li> <li>Park Cable and Ground Satellite Hook-up</li> <li>HD Over-the-air Antenna<sup>3</sup></li> <li>12-Volt Breaker Panel</li> </ul>	<ul style="list-style-type: none"> <li>12-Volt Disconnect Switch</li> <li>Rotary Disconnect Switches for House Batteries, Chassis Batteries, and Inverter</li> <li>Ground Fault Circuit Interrupter (GFCI) Outlets at Galley, Lavatories, and Sewer Bay</li> <li>110-Volt Exterior Receptacle</li> <li>Surge Guard® Transfer Switch</li> <li>USB Receptacles Throughout Coach</li> </ul>
<b>ELECTRICAL OPTIONS</b>		
House Batteries	(4) 6-Volt Flooded Lead-Acid House Batteries	S
	(4) 6-Volt Extended Cycle AGM House Batteries	O
Air Conditioning	(2) 13,500-BTU Low Profile Air Conditioners with Heat Pumps and Condensation Drains	S
	(1) 13,500-BTU Low Profile Air Conditioner and (1) 15,000-BTU Low Profile Air Conditioner with Heat Pump, both with Condensation Drains <sup>4</sup>	O
In-motion Satellite Dish <sup>5</sup>		O
Solar Panels	Prep for Solar Panels <sup>6</sup>	O
	(1) 200-Watt Solar Panel with (1) 30-Amp Controller	O
	(3) 200-Watt Solar Panels with (1) 30-Amp Controller	O
Wi-Fi Booster		O

<sup>1</sup> Propane is used to power the ducted furnaces, the water heater, and liquid propane cooktops.

<sup>2</sup> Automatic generator start capabilities controlled through Spyder Controls Multiplex System. 1200-Watt inverter no longer available.

<sup>3</sup> Requires subscription.

<sup>4</sup> 15,000-BTU air conditioner replaces front 13,500-BTU air conditioner.

<sup>5</sup> High-definition programming is not available on a domed satellite antenna unless you subscribe to DISH Network®.

<sup>6</sup> Includes docking ports for aftermarket solar panels.

PLUMBING		
<ul style="list-style-type: none"> <li>Truma AquaGo™ Comfort Instant Water Heater<sup>1</sup></li> <li>Water Heater Bypass System</li> <li>Aqua View Showermiser™</li> <li>Water Filter</li> <li>Water Pump Switch Access from Spyder System and Sewer Bay Board</li> </ul>	<ul style="list-style-type: none"> <li>Low-point Water Drain Lines</li> <li>Black Holding Tank Flush System</li> <li>Gravity Water Fill</li> <li>Heated Water and Holding Tank Compartment</li> <li>Tank Level Monitor System</li> </ul>	<ul style="list-style-type: none"> <li>Centralized Exterior Sewer Bay with Gravity Black and Grey Evacuation Ports</li> <li>Exterior Rinse Hose with Shower Head</li> <li>Sewer Bay Hand Sanitizer and Paper Towel Holders</li> </ul>

<sup>1</sup> Controllable through the Truma control panel and the Spyder System control panels.



## Specifications, Features, and Options (Cont'd)

KEY : S : Standard Feature | O : Optional Feature; Additional costs may apply | D : Dependent; Availability is dependent on selection of another option | - : Not Available

EXTERIOR		33 BR
<ul style="list-style-type: none"> <li>Full-body Paint with (3) Layers of Clear Coat</li> <li>Single-colored Slide-out Endwalls</li> <li>High Performance Protective Film on Front Cap and Select Areas</li> <li>(1) Girard® Side-mounted Powered Patio Awning with Integrated LED Lighting</li> <li>Girard® Powered Door Awning with Integrated LED Lighting</li> <li>Girard® Slide-out Toppers</li> <li>Side-swinging Exterior Storage Doors with Gas Shocks</li> </ul>	<ul style="list-style-type: none"> <li>Lockable Handles on Compartment Doors</li> <li>Motion-sensor Lights in Cargo Bay</li> <li>120-Volt and 12-Volt Outlets Inside Cargo Bays</li> <li>Charcoal Carpet Cargo Walls</li> <li>Fiberglass Reinforced Plastic Basement Floor</li> <li>Frameless, Single-Pane Windows</li> <li>Exterior Patio Light</li> <li>Fog Lights</li> <li>Daytime Running Lights</li> <li>Docking Lights</li> </ul>	
<ul style="list-style-type: none"> <li>Chrome Power Heated Side-View Mirrors with Integrated Cameras</li> <li>Exterior TV with Soundbar</li> <li>Fast Charge USB ports within Exterior TV Compartment</li> <li>Lightweight Entry Door with Integrated Screen</li> <li>Entry Door Grab Handle</li> <li>Deadbolt Front Entrance Lock</li> <li>Automatic Double Entry Step</li> <li>Front Door Entry System via Key Fob <sup>1</sup></li> <li>Mud Flaps</li> </ul>		
EXTERIOR OPTION		33 BR
Lippert™ On-The-Go™ Ladder <sup>2</sup>		O

<sup>1</sup> Entry system does not include exterior Spyder keypad.

<sup>2</sup> All units will ship with a Lippert™ On-The-Go™ Prepped Receiver installed.

INTERIOR		33 BR
<ul style="list-style-type: none"> <li>Handcrafted Overhead Cabinetry</li> <li>Carpeted Step Well with Composite Steps</li> <li>Manual Step Well Cover</li> <li>Living Area TV</li> <li>Solid Surface Galley Countertop</li> <li>Tile Slide-out Floors</li> <li>Handcrafted Slide-out Fascia</li> </ul>	<ul style="list-style-type: none"> <li>Soft Touch Vinyl Ceiling</li> <li>Dimmable LED Lighting</li> <li>Prep for Washer and Dryer</li> <li>Carbon Monoxide Detector</li> <li>LPG Leak Detector</li> <li>Smoke Detector</li> <li>Fire Extinguisher</li> </ul>	
<ul style="list-style-type: none"> <li>Solar and Privacy Shades</li> <li>Soft-closing Drawers</li> <li>Powered Roof Vents</li> <li>Interior Grab Handle at Entry Door</li> <li>Egress Windows Throughout Coach</li> </ul>		
INTERIOR OPTIONS		33 BR
Interior Decor Package	Waypoint	S
Upholstery Fabrics	Ultrafabrics® Montage Alpaca <b>NEW</b>	O
	Ultrafabrics® Montage Landscape <b>NEW</b>	O
Cabinetry Color <sup>1</sup>	Sandstone	O
	Shadow	O
	Sea Grass Luxury Vinyl Tile	S
Floor Tiles	Monteano Luxury Vinyl Tile	O
	Standalone Living Area Fireplace	O
Combo Washer-Dryer		O
Central Vacuum System		O

<sup>1</sup> Lambrequins will match cabinet stain color.

DRIVER'S COMPARTMENT		33 BR
<ul style="list-style-type: none"> <li>Ultrafabrics® Montage Power Driver and Passenger Seats</li> <li>Dual Driver And Passenger Seat Armrests</li> <li>Swivel Bases for Driver and Passenger Seats</li> <li>Adjustable Seatbelt Brackets</li> <li>Powered Passenger Seat Footrest</li> <li>Tilt and Telescoping Steering Wheel with Integrated Controls</li> <li>Adjustable Accelerator and Brake Pedals</li> <li>Ergonomic Dash with Carbon Fiber Accents</li> <li>Mounted Dash Fans</li> <li>Cupholders on Driver and Passenger Side</li> <li>Valid™ Liquid Crystal Display Instrument Cluster with Integrated Leveling Controls</li> </ul>	<ul style="list-style-type: none"> <li>(1) Center Storage Drawer</li> <li>(2) Center Storage Drawers</li> <li>Generator Start &amp; Stop Rocker Switch</li> <li>USB Dash Receptacles</li> <li>12-Volt Dash Receptacle</li> <li>Backlit Dash Rocker Switches</li> <li>Passenger Console Controls for Map Light and Fan</li> <li>Driver and Passenger Map Lights</li> <li>One-piece Panoramic Windshield</li> <li>Single-motor Intermittent Windshield Wipers</li> <li>Automatic LED Headlights</li> <li>Side-view Cameras <sup>1</sup></li> <li>Color Back-up Camera</li> </ul>	
<ul style="list-style-type: none"> <li>7" High Definition LED Multichannel Monitor for Side-view and Back-up Cameras</li> <li>Stereo with AM &amp; FM Radio, CD Player, and Satellite Radio <sup>2</sup></li> <li>Ceiling Mounted Speakers</li> <li>Overhead Cabinetry with Wooden Panel Doors</li> <li>Auxiliary Start Switch</li> <li>Concealed Air Horn</li> <li>Manual Opening Driver Side Window</li> <li>Solid, Non-opening Passenger Side Window</li> <li>Powered Solar and Privacy Windshield Shade</li> <li>Manual Solar and Privacy Shades on Side Windows</li> </ul>		
DRIVER'S COMPARTMENT OPTIONS		33 BR
In-dash Navigation System		O
Front Overhead TV		O

<sup>1</sup> Subscription required for satellite radio.

<sup>2</sup> Integrated within side-view mirrors and activated by turn signals.

DINETTE AND LIVING AREA		SLEEPS	SEATS	SEATBELTS	33 BR
Driver Side Furniture	67" Air Coil Sofa Bed <sup>1</sup>	1	2	2	S
Passenger Side Furniture	72" Booth Dinette-Sleeper <sup>2</sup>	1	4	2	S
	72" Dinette with Chairs with Lift TV <sup>3</sup> <b>UPDATED</b>	-	2	-	O

<sup>1</sup> Mattress measures 72" x 52" and includes internal pump.

<sup>2</sup> Piece of furniture converts to 69" x 45" sleeping area.

<sup>3</sup> Formerly known as "Dinette Computer Workstation". The printer bump-out was removed for more leg room. The keyboard and printer trays have been converted to a drawer and a fixed shelf to maximize storage. Includes (2) freestanding accent chairs and (2) wooden folding chairs. Lift TV deletes cabinetry over dinette.

KITCHEN		
<ul style="list-style-type: none"> <li>12-Cubic Foot Stainless Steel Residential Refrigerator with Top Freezer <sup>1</sup></li> <li>11-Cubic Foot Convection Microwave Oven</li> <li>Three-Burner Liquid Propane Cooktop</li> </ul>	<ul style="list-style-type: none"> <li>Double Bowl Kitchen Sink with Single Lever Faucet and Pull-down Sprayer</li> <li>Galley Overhead Cabinets</li> <li>Panoramic Galley Window</li> </ul>	<ul style="list-style-type: none"> <li>Task Lighting</li> <li>Full Tile Backsplash</li> <li>Solid Surface Galley Countertop, Sink, and Cooktop Cover</li> </ul>
<p><sup>1</sup> Refrigerator volume is approximated.</p>		

BEDROOM		33 BR
<ul style="list-style-type: none"> <li>Under Bed Storage</li> <li>Bedside Windows</li> <li>Bed Comforter with Throw Pillows</li> </ul>	<ul style="list-style-type: none"> <li>Handcrafted Privacy Door</li> <li>LED Reading Lights</li> <li>Nightstand with Hardwood Finished Top</li> </ul>	<ul style="list-style-type: none"> <li>Mounted Bedroom TV</li> <li>Centralized Entertainment Center <sup>1</sup></li> <li>Floor-to-ceiling Closet Space</li> </ul>
BEDROOM OPTIONS		33 BR
Mattress	Memory Foam King Mattress (72" x 80")	S
	Memory Foam Queen Mattress (60" x 80")	O
Bed Slide	Overhead Cabinet with Headboard	S
	Window at Head of Bed <sup>2</sup>	O

<sup>1</sup> Houses Blu-ray™ player, satellite receiver, and cable TV hook-up.

<sup>2</sup> Window option removes overhead cabinets.

BATHROOM		
<ul style="list-style-type: none"> <li>(1) Bathroom</li> <li>(1) Porcelain Master Bathroom Sink</li> <li>Solid Surface Lavatory Top</li> <li>One-Piece Molded Fiberglass Shower (28.5" x 40.5")</li> </ul>	<ul style="list-style-type: none"> <li>Handheld Shower Head with Slide Bar</li> <li>Shower Skylight</li> <li>(1) Gravity Flush Toilet</li> <li>Towel and Toilet Paper Holders</li> </ul>	<ul style="list-style-type: none"> <li>Mirrored Medicine Cabinet</li> <li>Roof Vent Fan</li> <li>Base Cabinet</li> </ul>

1

YEAR OR 12,000 MILES  
LIMITED WARRANTY

5

YEARS OR 50,000 MILES  
DELAMINATION  
LIMITED WARRANTY

10

YEARS OR 50,000 MILES  
CONSTRUCTION  
LIMITED WARRANTY

1

YEAR COACH  
ROADSIDE SERVICE

∞

ONGOING  
CUSTOMER SUPPORT

FOR PARTS & SERVICE CALL 256.356.0261 OR VISIT [TIFFINMOTORHOMES.COM](http://TIFFINMOTORHOMES.COM)  
105 2ND ST NW RED BAY, AL 35582  



**TIFFIN**  
MOTORHOMES

All trademarks and logos are owned or used under license by Tiffin Motor Homes, Inc. and include, but are not limited to: TIFFIN®, MANY ADVENTURES. ONE DREAM™, ALLEGRO®, ALLEGRO BREEZE®, ALLEGRO RED®, PHAETON®, ALLEGRO BUS®, ZEPHYR®, WAYFARER®, ROUGHING IT SMOOTHLY®, OPEN ROAD®, POWERGLIDE®, CAHABA®, BYWAY™, and associated logos and emblems. Unauthorized use of any trademark of Tiffin Motor Homes, Inc. is strictly prohibited.  
© Copyright 2023 Tiffin Motor Homes, Inc.

For all information concerning the limited warranty provided by Tiffin, please refer to the full written limited warranty set forth on the Tiffin website or held by our authorized dealerships.  
Please note, some interior furnishings not included. Revised: 12/13/23