



# Ahara

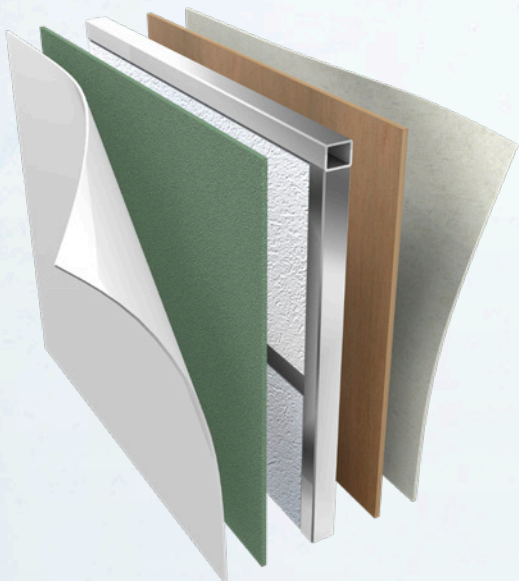
LUXURY FIFTH WHEELS

**"CRAFTED WITH QUALITY CONSTRUCTION IN MIND"**



- |  |   |
|--|---|
| <p><b>1</b> 101" Wide Body Chassis w/ Drop Frame Pass-Thru Storage Compartment</p> <p><b>2</b> 6- Point Hydraulic Automatic Leveling System</p> <p><b>3</b> MORryde Step Above® Entry Steps</p> <p><b>4</b> Metal Slam Latch Cargo &amp; LP Doors</p> <p><b>5</b> Hi-Gloss Gel Coated Fiberglass Exterior</p> <p><b>6</b> Dicor Diflexx II® TPO Roof w/ 12 Year Warranty</p> <p><b>7</b> Azdel Onboard® Laminated Sidewalls w/ 1.5 LB Block Foam</p> <p><b>8</b> Azdel Onboard® Laminated Slide-Out End Wall w/ 1.5 LB Block Foam</p> <p><b>9</b> Azdel Onboard® Laminated Slide-Out Roof w/ 1.5 LB Block Foam</p> <p><b>10</b> Azdel Onboard® Laminated Rear Wall</p> <p><b>11</b> Double Welded Aluminum Sidewall Framing</p> <p><b>12</b> Double Welded Aluminum Floor Joists (16" On Center)</p> | <p><b>13</b> Glued &amp; Screwed 5/8" Tongue &amp; Groove Plywood Floor (No OSB)</p> <p><b>14</b> Formaldehyde Free Fiberglass Insulation in Roof, Front Cap &amp; Main Floor</p> <p><b>15</b> Radiant Technology Composites™ Foil Insulation in Roof, Front Cap &amp; Underbelly</p> <p><b>16</b> Heated, Insulated &amp; Enclosed Underbelly w/ Circulating Heat</p> <p><b>17</b> 12v Heat Pads On Holding Tanks</p> <p><b>18</b> MORryde® CRE 3000 Suspension MORryde® Heavy Duty Shackles &amp; Wet Bolt Kit Dexter® Heavy Duty 4,000 LB Springs Dexter® Gladiator Thick Wall 7,000 LB Axles w/ Nev-R-Adjust® Brakes Nitro Filled G-Range Tires</p> |
|--|---|

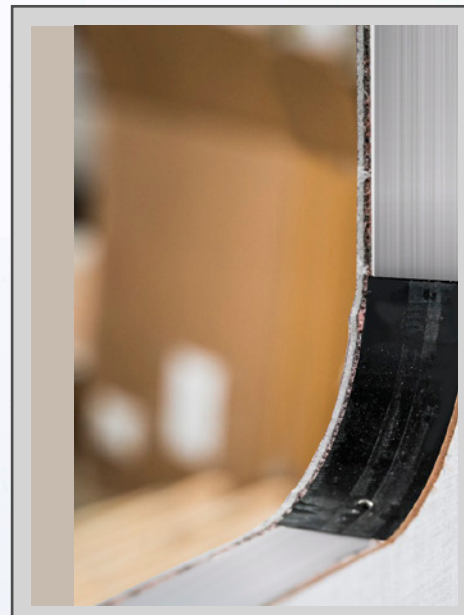
## AHARA KEY STANDARD FEATURES & INNOVATIONS



**AZDEL ONBOARD™**  
Laminated Sidewall Construction w/ AZDEL Onboard™



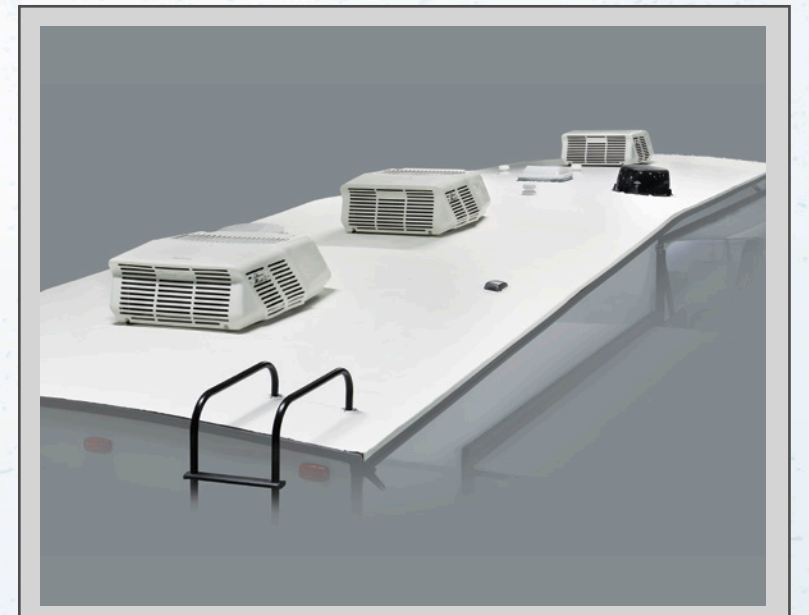
**GLUED & SCREWED PLYWOOD FLOORING**  
5/8" Tongue & Groove Plywood Floors Glued & Screwed on Aluminum Floor Joist (16" on Center)



**ALUMINUM FRAMED SIDEWALL OPENINGS**  
All Window, Door & Cargo Openings Fully Framed w/ Welded 2" Aluminum Tubes



**AUTOMATIC LEVELING SYSTEM**  
6-Point Hydraulic Automatic Leveling System



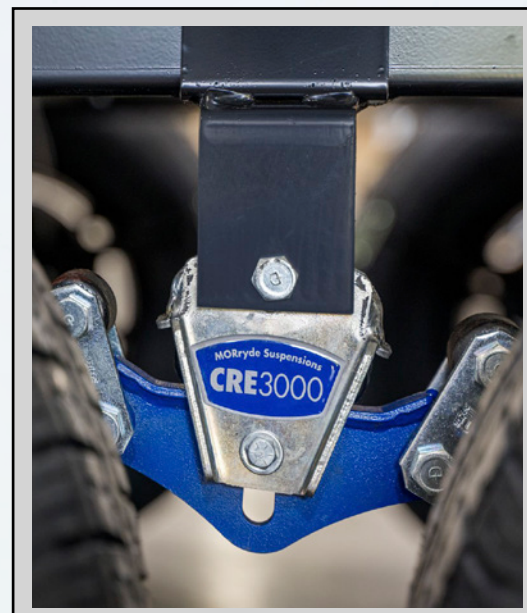
**HIGH-EFFICIENCY TRIPLE A/C SYSTEM**  
3 Independently Controlled A/C's Provide Maximum Cooling in Hot Weather



**DROP FRAME PASS-THRU STORAGE**  
Over 80 Cubic Feet of Unobstructed Pass-Thru Storage



**UNIVERSAL DOCKING STATION**  
Nautilus® P4 Universal All-In-One Docking Station Provides Convenient, Multi-Function Water Management



**MORRYDE® CRE 3000 SUSPENSION**  
3" of Suspension Travel to Add Protection From Road Shock



**MORRYDE® HEAVY DUTY SHACKLES & WET BOLT KIT**  
Easily Extend The Life of Bushings and Bolts w/ Periodic Lubrication



**NITROGEN FILLED G-RANGE TIRES**  
14-Ply Nitrogen Filled G-Range Tires Rated for 4,080 LBS Each



3000 CR 6 W ELKHART, IN 46514  
574.264.6664 | WWW.EASTTOWESTRV.COM

#GOEASTWEST



Scan this barcode to learn more about us!



**FREE MEMBERSHIP**  
to Forest River Owners' Group