



Entrada

CLASS C MOTORHOMES



Entrada
CLASS C
MOTORHOMES

EastToWestRv.com/Entrada
A DIVISION OF FOREST RIVER



Entrada

CLASS C
MOTORHOMES



Entrada 2200S

(Shown with Granite Peak Interior. Standard Features Include Designer Countertops, 10.7 cu.ft. Stainless Steel Appliances & High Rise Faucet)



Extended Storage Drawers
Under Dinette On Roller Guides



Dinette Bed



Entrada 2200S Master Bedroom

(Shown with Full Walk-Around
60 x 80 Queen Bed)



Wardrobe



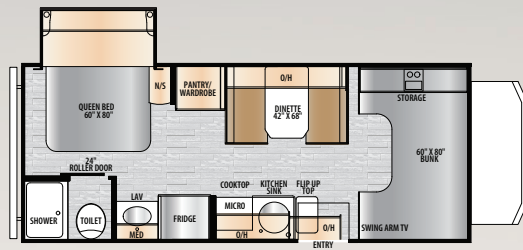
12V LED TV
(Standard in all Models)



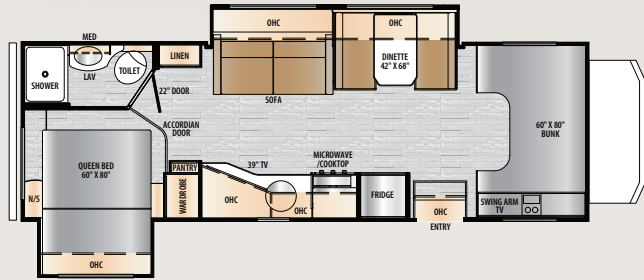
Rotocast Storage
(Standard in all Models)



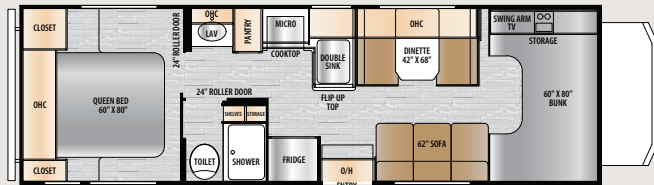
Exterior
Slide Topper



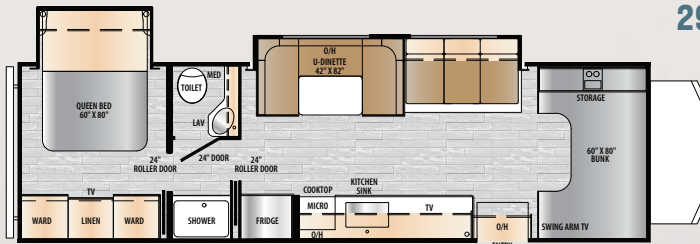
2200S



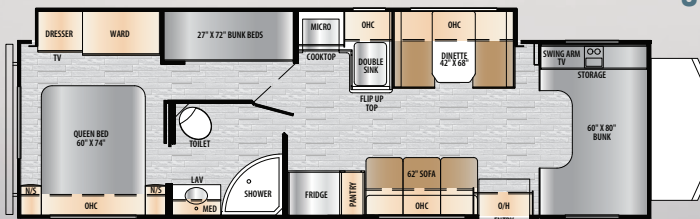
2600DS



2700NS



2900DS



3100FB

Entrada Specifications

| | 2200S | 2700NS | 2600DS | 2900DS | 3100FB |
|----------------------------|---------|---------|--------|--------|--------|
| Engine | Ford | Ford | Ford | Ford | Ford |
| Wheel Base | 158" | 190" | 190" | 220" | 220" |
| GVWR (lbs.) | 12,500 | 12,500 | 12,500 | 14,500 | 14,500 |
| GAWR Rear (lbs.) | 8,500 | 8,500 | 8,500 | 9,600 | 9,600 |
| GAWR Front (lbs.) | 5,000 | 5,000 | 5,000 | 5,000 | 5,000 |
| UVW (lbs.) | 10,550 | TBD | TBD | TBD | TBD |
| GCWR (lbs.) | 18,500 | 18,500 | 18,500 | 22,000 | 22,000 |
| CCC (lbs.) | 3,950 | TBD | TBD | TBD | TBD |
| Fuel Capacity (gal.) | 55 | 55 | 55 | 55 | 55 |
| Hitch Rating | 5,000 | 5,000 | 5,000 | 7,500 | 7,500 |
| Tongue Weight | 500 | 500 | 500 | 500 | 500 |
| Length (Bumper to Bumper) | 23' 10" | 29' 11" | 29' 4" | 32' 3" | 32' 6" |
| Exterior Height (w/ A/C) | 11' 3" | 11' 3" | 11' 3" | 11' 4" | 11' 4" |
| Exterior Width | 101" | 101" | 101" | 101" | 101" |
| Interior Width | 95.5" | 95.5" | 95.5" | 95.5" | 95.5" |
| Interior Height | 84" | 84" | 84" | 84" | 84" |
| Fresh Water (gal.) | 35 | 35 | 35 | 35 | 35 |
| Grey Holding Tank (gal.) | 32 | 32 | 39 | 32 | 39 |
| Black Holding Tank (gal.) | 27 | 32 | 39 | 32 | 39 |
| LP Capacity (gal.) | 9.8 | 9.8 | 9.8 | 9.8 | 9.8 |
| Awning Length | 14' | 20' | 12' | 20' | 18' |
| Water Heater (gal.) | 6 | 6 | 6 | 6 | 6 |
| Exterior Storage (cu. ft.) | 16 | 28 | TBD | TBD | TBD |

Entrada Standards & Options

Standard Features

- ▶ Hardwood Shaker Style Cabinets
- ▶ Flush Floor Slides (N/A in 3100FB)
- ▶ 12-Volt Exhaust Fan and Light
- ▶ 2" Sidewall with Azdel® Composite Backing
- ▶ Rotocast Storage Compartments
- ▶ Walk Around Queen Bed on All Floor Plans
- ▶ 1.3 Cubic ft. Convection Microwave Oven
- ▶ One Piece Cold Resistant Flooring
- ▶ 2" Walls with Azdel Composite Backing
- ▶ Completely Laminated Coach
- ▶ One Piece Molded Fiberglass Front Cap
- ▶ Dicor® Diflex II TPO Roof
- ▶ 13.5k A/C
- ▶ 30k BTU Furnace
- ▶ Roof Ladder
- ▶ Cold Crack Resistant Flooring
- ▶ 7' Interior Living Height
- ▶ Aluminum Running Boards
- ▶ Integrated Entry Step
- ▶ R.V.I.A. Approved

Luxury Package

- ▶ 40" 12v LED TV
- ▶ 10.7 Cubic Ft. 12v Refrigerator
- ▶ Black Tank Flush
- ▶ One Piece Molded Fiberglass Front Cap
- ▶ Power Awning with LED Light Strip
- ▶ Backup and Side View Cameras with Monitor
- ▶ 7500 lb. Hitch on E450 (5000 lbs. on E350)
- ▶ 12v Tank Heaters
- ▶ Winegard® Air 360+

Optional Features

- ▶ Automatic Leveling Jacks
- ▶ Drivers Side Swivel Seat with Booster
- ▶ Passenger Side Swivel Seat with Booster
- ▶ Roof Mounted Solar Panel (Includes Second Battery)



OUR COMPANY TAKES PRIDE IN OUR FIVE GUIDING PRINCIPLES AND OUR CORPORATE PHILOSOPHY
 which focuses on people working together to create high quality, value-added products that deliver the ultimate RV experience.

Sustainable Manufacturing

An important objective to our strategy and operations is to implement economically sound manufacturing processes to reduce/recycle waste & conserve energy and natural resources.

Corporate & Social Responsibility

We foster a business environment in which we focus on and practice:

- Ethical Labor Practices
- Teamwork
- Philanthropy
- Volunteering

Culture & Values

We are a forward thinking company committed to fostering a culture of teamwork. By being transparent, we encourage our employees to think outside the box and make a difference!

Quality & Construction

Our team takes pride in each unit we build. Our manufacturing standards and point to point inspections ensure each EAST TO WEST brand is built to the same quality specifications every time.

Our Commitment

We strive to provide the highest quality products at the best possible price to our customers. We invite you to be a part of the EAST TO WEST family and we look forward to exceeding your expectations!



**24/7 EMERGENCY
 ROADSIDE ASSISTANCE
 WITH VEHICLE PURCHASE***

- | | |
|----------------|-----------------|
| TOWING | WINCH-OUT |
| JUMP-STARTS | MOBILE MECHANIC |
| TIRE CHANGES | TECHNICAL |
| FLUID DELIVERY | SUPPORT |
| LOCKOUT | DEALER LOCATOR |
| SERVICE | SERVICES |



*VALID FOR 1 YEAR FROM DATE OF PURCHASE



Learn More
 Scan this barcode using a QR Reader on your smart phone to learn more about Forest River.



A Berkshire Hathaway company.

3000 COUNTY ROAD 6 WEST ELKHART, IN 46514
 WWW.EASTTOWESTRV.COM 574.264.6664

FREE MEMBERSHIP
 to Forest River Owners' Group



East To West RV @easttowestr

CUSTOMER SATISFACTION



www.ForestRiverBuyLocal.com



PRE-DELIVERY INSPECTION FACILITY

20,000 square feet of quality assurance. The bare essentials for a premium product. This state-of-the-art facility gives immediate daily feedback to production for quality assurance in every unit built.

SPECIFICATION DEFINITIONS

GVWR (Gross Vehicle Weight Rating) - is the maximum permissible weight of the unit when fully loaded. It includes all weights, inclusive of all fluids, cargo, optional equipment and accessories. For safety and product performance do NOT exceed the GVWR.

GAWR (Gross Axle Weight Rating) - is the maximum permissible weight, including cargo, fluids, optional equipment and accessories that can be safely supported by a combination of all axles.

UVW (Unloaded Vehicle Weight)* - is the typical weight of the unit as manufactured at the factory. It includes all weight at the unit's axle(s) and tongue or pin and LP Gas. The UVW does not include cargo, fresh potable water, additional optional equipment or dealer installed accessories.

*Estimated average based on standard build optional equipment.

CCC (Cargo Carrying Capacity)** - is the amount of weight available for fresh potable water, cargo, additional optional equipment and accessories. CCC is equal to GVWR minus UVW. Available CCC should accommodate fresh potable water (8.3 lbs per gallon). Before filling the fresh water tank, empty the black and gray tanks to provide for more cargo capacity.

** Estimated average based on standard build optional equipment

Each Forest River RV is weighed at the manufacturing facility prior to shipping. A label identifying the unloaded vehicle weight of the actual unit and the cargo carrying capacity is applied to every Forest River RV prior to leaving our facilities.

The load capacity of your unit is designated by weight, not by volume, so you cannot necessarily use all available space when loading your unit.

YOUR *Entrada* DEALER

All information contained in this brochure is believed to be accurate at the time of publication. However, during the model year, it may be necessary to make revisions and Forest River, Inc., reserves the right to make all such changes without notice, including prices, colors, materials, equipment and specifications as well as the addition of new models and the discontinuance of models shown in this brochure. Therefore, please consult with your Forest River dealer and confirm the existence of any materials, design or specifications that are material to your purchase decision. Litho. U.S.A. FOR 1888 P&W: 2021.08.13