

CLASS-A

# ALLEGRO RED 340

MODEL YEAR 2023 | PRODUCT UPDATES

Initial MY2023 Model Change Plans, Subject to Change in Full Production

Date Revised: 10/28/22

**TIFFIN**

20  
23

## What's New Summary - Allegro Red 340

### WHAT'S NEW

---

- Two New Fabric Suites (Moondance & Stonewashed)
- Two New Ultraleather Colors (Trail & Taupe Hills)
- Sea Grass Luxury Vinyl Tile
- Generation 2 Paint Schemes
- 50th Anniversary Decal
- Euro Blue, Frosted Granite, Rocky Mountain Brown, & 50th Anniversary Exterior Paint Color Packages
- Foot Ledge in Shower
- Updated Dinette Boothe Seating for Lift Up Seat Storage Access
- New Wi-Fi Booster
- New 14.5' Lippert™ On-The-Go™ Ladder
- Updated Logo to Mirror RED 360 Look
- Spyder Mira App Now Available
- Updated Dinette Computer Workstation Option
- Truma AquaGo™ Comfort Instant Water Heater Now Controllable Through Spyder System Panels

### NO LONGER AVAILABLE

---

- Khaki Shade II & Resort Tan III Fabric Suites
- Belgian and Cocoon Ultraleather Colors
- Sand Castle Floor Tile
- Dusk Blue, Slate Gray, & Macademia Exterior Color Packages
- Generation 1 Paint Schemes
- Molded-in Shower Seats

## Premium Paint System

Our eight-step, full-body paint system features premium grade paints sealed with three layers of clear coat with ultraviolet protection. An additional layer of high-performance film protects the front of the coach and select areas.

### NO LONGER AVAILABLE

- Generation 1 Paint Schemes

Initial MY2023 Model Change Plans, Subject to Change in Full Production

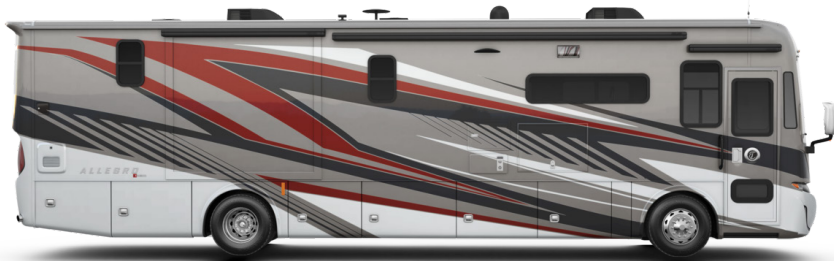


50TH ANNIVERSARY

NEW



NEW



G2 SCARLET THUNDER

NEW



G2 EURO BLUE

NEW



G2 ROCKY MOUNTAIN BROWN

NEW



G2 FROSTED GRANITE

Images shown are representations of paint layouts only and do not reflect all exterior features or options. Colors shown may slightly differ from colors on actual product.

Floor Plans



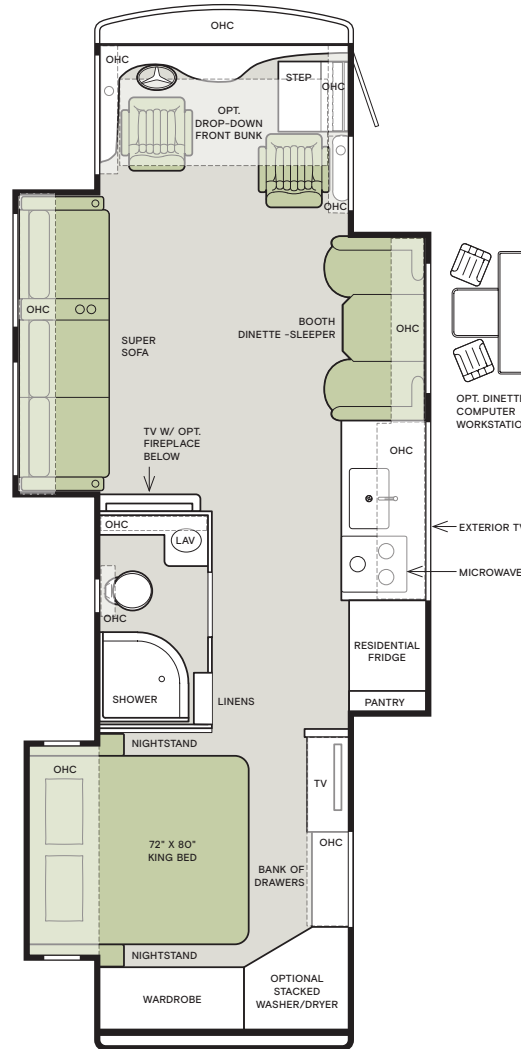
The design of every Allegro RED 340 floor plan must meet four essential criteria: Maximum space, Optimal organization, Relaxation plus, and Elegant atmosphere. Tiffin's MORE Plans offer your family the most comfortable layout for life on the road.

If optional furniture combinations are selected, window locations may vary from diagram shown.

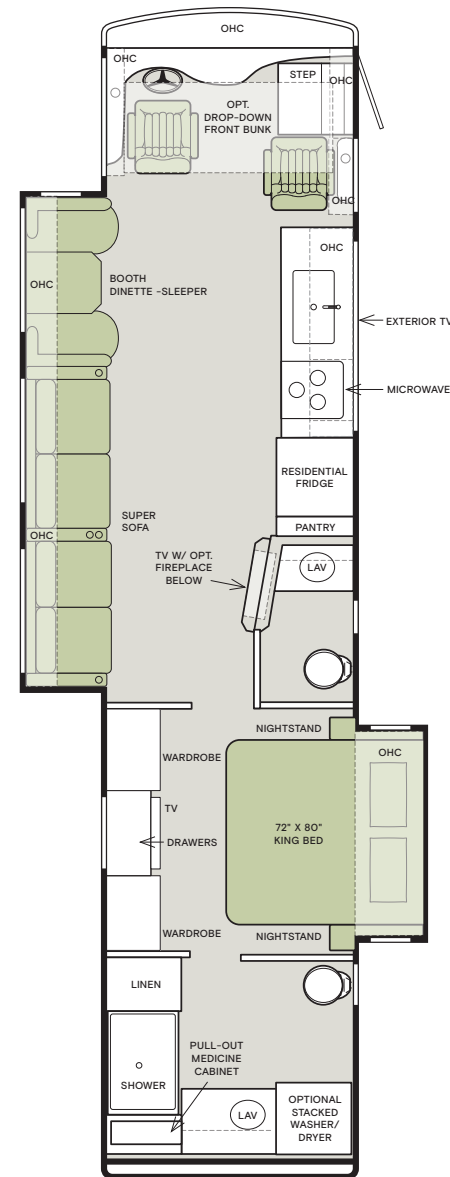
All options may not be available in every model. Because of progressive improvements and specifications, standard and optional equipment are subject to change without notice or obligation.

For a complete and up-to-date list of available options and specifications, visit [tiffinmotorhomes.com](http://tiffinmotorhomes.com).

33 AL



38 LL



## Interior Décor

Make your experience on the road all your own. Express yourself by choosing the interior appointments such as cabinet finishes, flooring, and décor ensembles for every part of your motorhome. In the 2023 Allegro RED 340, you'll be able to travel in style no matter where you go.

### CABINETS



NATURAL ALDER

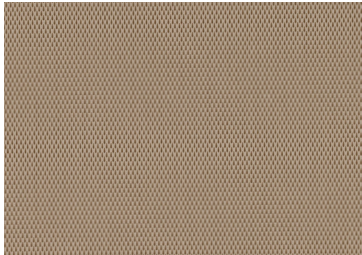
### FLOORING



SEAGRASS Matte Finish Tile

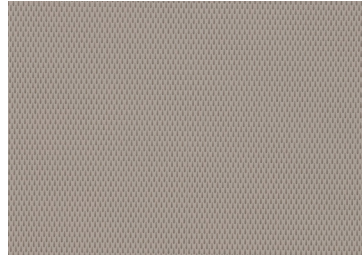
NEW

### ULTRALEATHER



TRAIL (S)

NEW

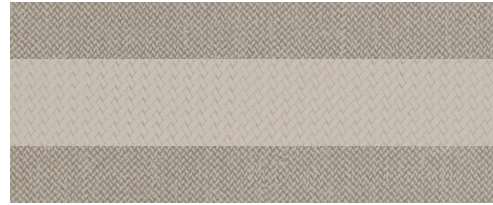


TAUPE HILL (O)

NEW

### MOONDANCE

NEW



WINDOW TREATMENT



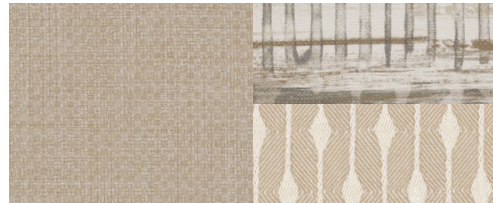
BACKSPLASH



COUNTERTOP



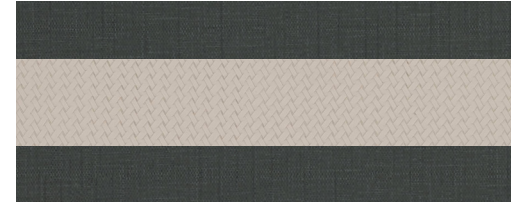
LIVING ROOM



MASTER SUITE

### STONEWASHED

NEW



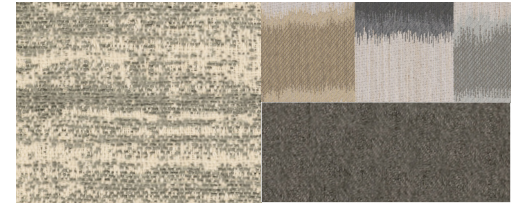
WINDOW TREATMENT



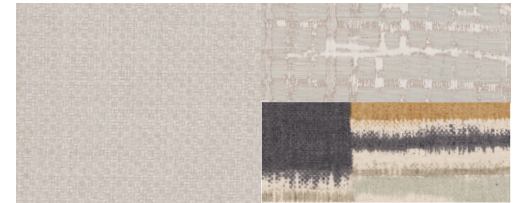
BACKSPLASH



COUNTERTOP



LIVING ROOM



MASTER SUITE

## Specifications, Features, and Options

KEY : S : Standard Feature | O : Optional Feature; Additional costs may apply | D : Dependent; Availability is dependent on selection of another option | — : Not Available

WEIGHTS AND MEASURES	33 AL	38 LL
<b>DIMENSIONS</b>		
Overall Length (approx.) <sup>1</sup>	35'2"	39'6"
Overall Width <sup>1</sup>	101"	101"
Overall Height	12'10"	12'10"
Minimum Garage Height	14'	14'
Interior Height	84"	84"
Interior Width	96"	96"
Basement Storage (cubic feet, approx.)	71	118
Wheel Base	198"	252"
<b>WEIGHT LIMITS</b>		
GAWR-Front (pounds)	10,000	10,410
GAWR-Rear (pounds)	18,000	17,590
GVWR (pounds)	28,000	28,000
Maximum Trailer Weight (pounds) <sup>2</sup>	5,000	5,000
Hitch Rating (pounds)	5,000	5,000
GCWR (pounds)	33,000	33,000
<b>CAPACITIES</b>		
Fuel Tank (gallons)	90	90
DEF Tank (gallons) <sup>3</sup>	13	13
Fresh Water (gallons)	70	70
Grey Water (gallons)	50	65
Black Water (gallons)	50	65
LPG Tank (gallons) <sup>4</sup>	24	24

<sup>1</sup> The approximated coach width and length does not include side-view mirrors and rear ladders.

<sup>2</sup> Maximum Trailer Weight is dependent on the loading and towing variables which include the GVWR, GAWR, and GCWR, as well as adequate trailer brakes.

<sup>3</sup> Diesel Exhaust Fluid (DEF) is the active component used in Selective Catalytic Reduction (SCR) engines to reduce nitrogen oxide emissions by 90% to meet EPA standards.

<sup>4</sup> LPG tank can only be filled to 80% capacity.

### CHASSIS AND DRIVETRAIN

- Freightliner® XCS Straight Rail Rear Engine Diesel Chassis with RoadWatch
- Cummins® B6.7 340 HP Diesel Engine with 700 lb-ft Torque<sup>1</sup>
- 160-Amp Alternator
- Allison® 2500 MH 6-speed Automatic Transmission with Lock-up Torque Converter
- Aluminum Wheels
- Front and Rear 255/80 R22.5 Tires
- Valid™ Air Leveling System
- (2) 12-Volt Flooded Lead-Acid Chassis Batteries
- Neway® Air Ride Front Suspension
- Freightliner® V-Series V-Ride Rear Suspension
- Custom Tuned Sachs® Shock Absorbers
- Front Disc Brakes and Rear Drum Brakes
- Full Air Brake System with Automatic Slack Adjusters
- Rear Radiator
- Single Stage Variable Geometry Turbocharger (VGT) Engine Brake
- Manual Parking Brake
- Tire Pressure Monitoring
- Adaptive Cruise Control
- Automatic Traction Control
- Collision Mitigation with Forward Warning and Active Braking
- Electronic Stability Control

<sup>1</sup> Peak horsepower achieved at 2,600 RPM. Peak torque achieved at 1,600 RPM.

### PLUMBING

- Truma AquaGo™ Comfort Instant Water Heater<sup>1</sup> **UPDATED**
- Water Heater Bypass System
- Aqua View Showermiser™
- Water Filter
- Water Pump Switch Access from
- Spyder System and Sewer Bay Board
- Low-point Water Drain Lines
- Gravity Water Fill
- Heated Water and Holding Tank Compartment
- Tank Level Monitor System
- Centralized Exterior Sewer Bay with Gravity Black and Grey Evacuation Ports
- Exterior Rinse Hose with Shower Head
- Sewer Bay Hand Sanitizer and Paper Towel Holders

<sup>1</sup> Now controllable through the Truma control panel and the Spyder System control panels.

### ELECTRICAL

- Liquid Propane (LP) Coach<sup>1</sup>
- Spyder Multiplex System Featuring App Compatibility
- 8.0-Kilowatt Onan® Quiet Diesel Generator
- Generator Slide Tray
- 2,000-Watt Pure Sine Wave Inverter with Auto-Gen Start and Interior Remote Control<sup>2</sup>
- (4) 6-Volt Flooded Lead-Acid Batteries
- Battery Slide-out Tray
- (2) 15,000-BTU Air Conditioners with Heat Pumps
- 50-Amp Shore Power
- (1) 35,000-BTU and (1) 30,000-BTU Ducted Furnaces
- Prep for Satellite
- Auxiliary Solar Port
- Prep for Solar Panels<sup>3</sup>
- Blu-ray™ Player
- Satellite Receiver
- Park Cable and Ground Satellite Hook-up
- HD Over-the-air Antenna<sup>4</sup>
- 12-Volt Breaker Panel
- 12-Volt Disconnect Switch
- Rotary Disconnect Switches for House Batteries, Chassis Batteries, and Inverter
- Ground Fault Circuit Interrupter (GFCI) Outlets at Galley, Lavatories, and Sewer Bay
- 110-Volt Exterior Receptacle
- Surge Guard® Transfer Switch
- USB Receptacles Throughout Coach

ELECTRICAL OPTIONS	33 AL	38 LL
In-motion Satellite Dish <sup>5</sup>	O	O
Wi-Fi Booster <b>UPDATED</b>	O	O

<sup>1</sup> Propane is used to power the ducted furnaces, the water heater, and liquid propane cooktops.

<sup>2</sup> Automatic generator start capabilities controlled through Spyder Controls Multiplex System.

<sup>3</sup> Includes docking ports for aftermarket solar panels.

<sup>4</sup> Requires subscription.

<sup>5</sup> High-definition programming is not available on a domed satellite antenna unless you subscribe to DISH Network®.

### DRIVER'S COMPARTMENT

- Ultraleather Power Driver and Passenger Seats
- Adjustable Seatbelt Brackets
- Passenger Seat Footrest
- Tilt and Telescoping Steering Wheel with Integrated Controls
- Adjustable Accelerator and Brake Pedals
- Digital Dash Cluster
- Backlit Dash Switches
- Storage Drawer in Dash
- Dual Dash Fans
- 12-Volt Dash Receptacle
- USB Dash Receptacles
- Contemporary Dash
- Cupholders on Driver and Passenger Side
- Built-in Driver and Passenger Consoles with Rocker Switches
- Driver and Passenger Map Lights
- One-piece Panoramic Windshield
- Single-motor Intermittent Windshield Wipers
- Automatic LED Headlights
- Side-view Cameras
- Color Back-up Camera Monitor
- Stereo with AM & FM Radio, CD Player, and Satellite Radio<sup>2</sup>
- Ceiling Mounted Speakers
- In-dash Navigation System
- Auxiliary Start Switch
- Driver's Compartment Overhead Cabinets with Wooden Panel Doors
- Manual Opening Driver Side Window
- Solid, Non-opening Passenger Side Window
- Powered Solar and Privacy Windshield Shade
- Manual Solar and Privacy Shades on Side Windows
- Carpeted Step Well
- Manual Step Well Cover

DRIVER'S COMPARTMENT OPTIONS	33 AL	38 LL
Front Overhead Drop-Down Bunk <sup>3</sup>	O	O

<sup>1</sup> Integrated within side-view mirrors and activated by turn signals.

<sup>2</sup> Subscription required for satellite radio.

<sup>3</sup> Drop-down bunk sleeps one comfortably and will decrease overhead storage capacity. Maximum weight limit of drop-down bunk is 250 pounds.

## Specifications, Features, and Options (Cont'd)

KEY : S : Standard Feature | O : Optional Feature; Additional costs may apply | D : Dependent; Availability is dependent on selection of another option | - : Not Available

### EXTERIOR

- Full-body Paint with (3) Layers of Clear Coat
- Seamless One-piece Gel-coat Fiberglass Molded Roof Cap
- One-piece Molded Gel-coat Fiberglass Front and Rear Caps
- Rust Protective Undercoating
- High Performance Protective Film on Front Cap and Select Areas
- (1) Girard® Side-mounted Powered Patio Awning with Integrated LED Lighting
- Girard® Slide-out Toppers
- Steel Basement Construction
- Side-Swinging Exterior Storage Doors with Gas Shocks
- Lockable Chrome Handles on Compartment Doors
- Motion-sensor Lights in Cargo Bay
- 120-Volt and 12-Volt Outlets Inside Cargo Bays
- Charcoal Carpet Cargo Walls
- Framed, Single-Pane Windows
- Daytime Running Lights
- Docking Lights
- Exterior Patio Light
- Fog Lights
- Chrome Power Heated Side-View Mirrors with Integrated Cameras
- Exterior TV with Soundbar
- Fast Charge USB ports within Exterior TV Compartment
- Manual Exterior TV Compartment Door
- Deadbolt Front Entrance Lock
- Entry Door Grab Handle
- Automatic Double Entry Step
- Mud Flaps
- Concealed Air Horn
- Limited Edition 50th Anniversary Decal **NEW**

EXTERIOR OPTIONS	33 AL	38 LL
Lippert™ On-The-Go™ Ladder <sup>1</sup> <b>NEW</b>	O	O

<sup>1</sup> All units will ship with a Lippert™ On-The-Go™ Prepped Receiver installed.

### INTERIOR

- Handcrafted Cabinet Fascias and Doors with Concealed Hinges
- (2) Flat-panel Televisions <sup>1</sup>
- Solid Surface Galley Countertop
- Treated Carpet in Slide-out Floors
- Handcrafted Slide-out Fascia
- Soft Touch Vinyl Ceiling
- LED Lighting
- Carbon Monoxide Detector
- LPG Leak Detector
- Smoke Detector
- Fire Extinguisher
- Solar and Privacy Shades
- Soft-closing Drawer Slides
- Powered Roof Vents
- Interior Grab Handle at Entry Door

INTERIOR OPTIONS	33 AL	38 LL
Treated Fabric Suites <sup>2</sup>	Moondance <b>NEW</b>	O
	Stonewashed <b>NEW</b>	O
Ultraleathers <sup>3</sup>	Trail <b>NEW</b>	O
	Taupe Hill <b>NEW</b>	O
Cabinetry Stain	Natural Alder	O
Floor Tiles <sup>4</sup>	Sea Grass Luxury Vinyl Tile <b>NEW</b>	S
Washer & Dryer	Prep for Washer and Dryer	S
	Stacked Washer and Dryer	O
Central Vacuum Cleaner	O	O

<sup>1</sup> Located in living area and bedroom.

<sup>2</sup> Khaki Shade and Resort Tan will no longer be available.

<sup>3</sup> Belgian and Cocoon will no longer be available.

<sup>4</sup> Matte Finish, Sand Castle will no longer be available.

### KITCHEN

- Stainless Steel Residential Refrigerator
- Stainless Steel Convection Microwave with Exterior Venting
- Large Kitchen Sink with Single Level Faucet and Pull-down Sprayer
- Panoramic Galley Window
- LED Countertop Lighting
- Full Tile Backsplash
- Solid Surface Galley Countertop, Sink, and Cooktop Cover

KITCHEN OPTIONS	33 AL	38 LL
Cooking Appliances	Three-Burner Liquid Propane Cooktop	S
	Oven Range with Liquid Propane Cooktop	O

### DINETTE AND LIVING AREA

	33 AL	38 LL
Driver Side Dinette	Ultraleather Booth Dinette-Sleeper <sup>1</sup> <b>UPDATED</b>	-
	Overhead Dinette Cabinets	-
Driver Side Furniture	Ultraleather Super Sofa <sup>2</sup>	S
	Mounted Flat-panel TV	S
	Fireplace	O
Passenger Side Dinette	Ultraleather Booth Dinette-Sleeper <sup>1</sup>	S
	Dinette Computer Workstation <sup>3</sup> <b>UPDATED</b>	O
	Overhead Dinette Cabinets	S
Passenger Side Furniture	Mounted Flat-panel TV	-
	Fireplace	-

<sup>1</sup> Piece of furniture sleeps one comfortably. Now with lift-up seat storage access.

<sup>2</sup> Consists of theater seating and a flip and fold sofa bed. Piece of furniture sleeps two comfortably.

<sup>3</sup> The printer bump-out was removed for more leg room. The keyboard and printer trays have been converted to a drawer and a fixed shelf to maximize storage.

### BEDROOM

- Memory Foam King Mattress (72" x 80")
- Under Bed Storage
- Bedside Windows
- Overhead Cabinet with Headboard
- Bed Comforter with Throw Pillows
- Strategically Placed, Handcrafted Privacy Door
- Nightstand with Hardwood Finished Top
- Mounted Flat-panel TV
- Centralized Entertainment Center <sup>1</sup>

BEDROOM OPTIONS	33 AL	38 LL
Bedroom Storage	Floor-to-ceiling Closet Space	S
	Wardrobe with Drawers Underneath	-
Laundry Hamper	S	-

<sup>1</sup> Houses Blu-ray™ player, satellite receiver, and cable TV hook-up.

### BATHROOM

- (1) Porcelain Master Bathroom Sink
- One-Piece Molded Fiberglass Shower <sup>1</sup> **UPDATED**
- Solid Surface Lavatory Top
- Handheld Shower Head with Slide Bar
- Shower Skylight
- Towel and Toilet Paper Holders
- Mirrored Medicine Cabinet
- Roof Vent Fan

BATHROOM OPTIONS	33 AL	38 LL
Number of Bathrooms	(1) Bathroom	S
	(1) Bathroom and (1) Half-bath <sup>2</sup>	-
Toilet	(1) Gravity Flush Toilet	S
	(1) Gravity Flush Toilet and (1) Macerator Toilet	-

<sup>1</sup> Added foot ledge and removed molded-in shower seats to allow for more room.

<sup>2</sup> All half-baths contain a toilet and a solid surface countertop with a single porcelain sink.

Because of progressive improvements and specifications, standard and optional equipment are subject to change without notice or obligation. For a complete and up-to-date list of available options and specifications, visit [tiffinmotorhomes.com](http://tiffinmotorhomes.com).

1

YEAR OR 12,000 MILES  
LIMITED WARRANTY

5

YEARS OR 50,000 MILES  
DELAMINATION  
LIMITED WARRANTY

10

YEARS OR 50,000 MILES  
CONSTRUCTION  
LIMITED WARRANTY

1

YEAR COACH  
ROADSIDE SERVICE

∞

ONGOING  
CUSTOMER SUPPORT



**TIFFIN**

MOTORHOMES

FOR PARTS & SERVICE CALL 256.356.0261 OR VISIT [TIFFINMOTORHOMES.COM](http://TIFFINMOTORHOMES.COM) | 105 2ND ST NW RED BAY, AL 35582  

©2021 Tiffin Motorhomes, Inc. Allegro®, Allegro Breeze®, Allegro RED®, Phaeton®, Allegro Bus®, Zephyr®, Wayfarer®, Roughing It Smoothly®, Open Road®, PowerGlide®, Pusher® and Cahaba® are registered trademarks of Tiffin Motorhomes, Inc. All rights reserved.  
For all information concerning the limited warranty provided by Tiffin, please refer to the full written limited warranty set forth on the Tiffin website or held by our authorized dealerships. Please note, some interior furnishings not included.