



# Ahara

LUXURY FIFTH WHEELS



[EastToWestRV.com/Ahara](http://EastToWestRV.com/Ahara)

A DIVISION OF FOREST RIVER



# THE AHARA LUXURY FIFTH WHEEL IS THE NEWEST ADDITION TO THE EAST TO WEST FAMILY.

**AHARA** is a Sanskrit term used in yoga philosophy to refer to the vehicle, or support, of consciousness and is one of the basic principles upon which health, happiness and harmony rests. The **AHARA** name perfectly embodies the spirit of this thoughtfully designed luxury fifth wheel.

**AHARA** debuts with three floor plans and one beautiful interior décor, Barrington Maple. Standard features include 6-point hydraulic automatic leveling system, high-efficiency triple air conditioning system, high-gloss laminated sidewalls with Azdel composite panels, and 101" wide-body chassis with drop-frame pass-through storage compartment.



**325 RL & 365RL**  
KITCHEN SLIDE OUT



**325 RL & 365RL**  
6' 6" TALL MAIN SLIDE OUT



**325 RL & 365RL**  
REAR LOUNGE & KITCHEN



**325 RL & 365RL**  
KITCHEN W/ DOUBLE DOOR PANTRY & COAT CLOSET



**DOUBLE DOOR PANTRY**



**CONVERTED INTO COAT CLOSET**



**325RL**  
BATHROOM



**325RL**  
BEDROOM



**365RL**  
BATHROOM

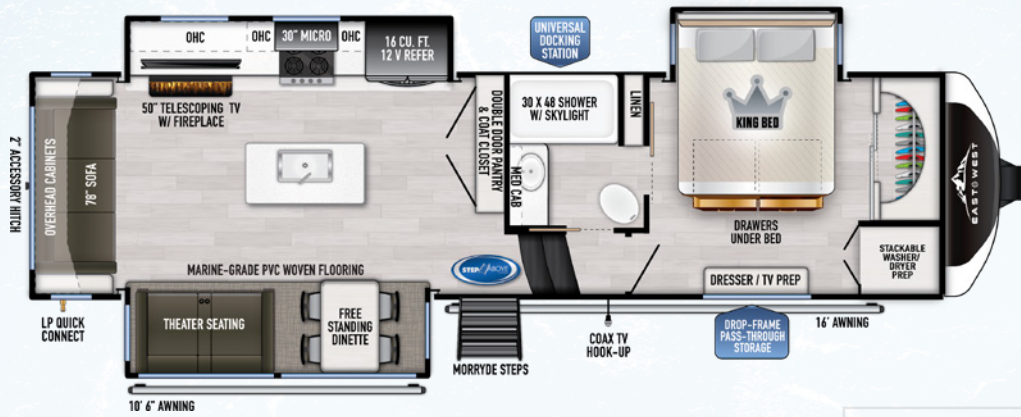


**365RL**  
BEDROOM CLOSET



**365RL**  
BEDROOM

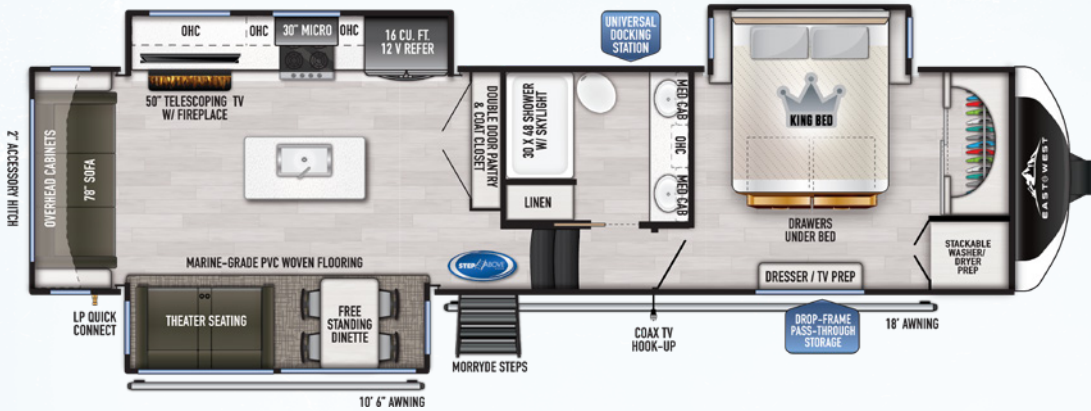
# AHARA FLOORPLAN LINE-UP



HITCH (LBS.): 2,185 U/VW (LBS.): 11,759 CCC (LBS.): 3,741 LENGTH: 34' 9"  
 EXTERIOR HEIGHT: 13' 5" WIDTH: 101" TANKS (F/G/B): 63 / 90 / 45 AWNING: 16' & 10' 6"

## 325RL

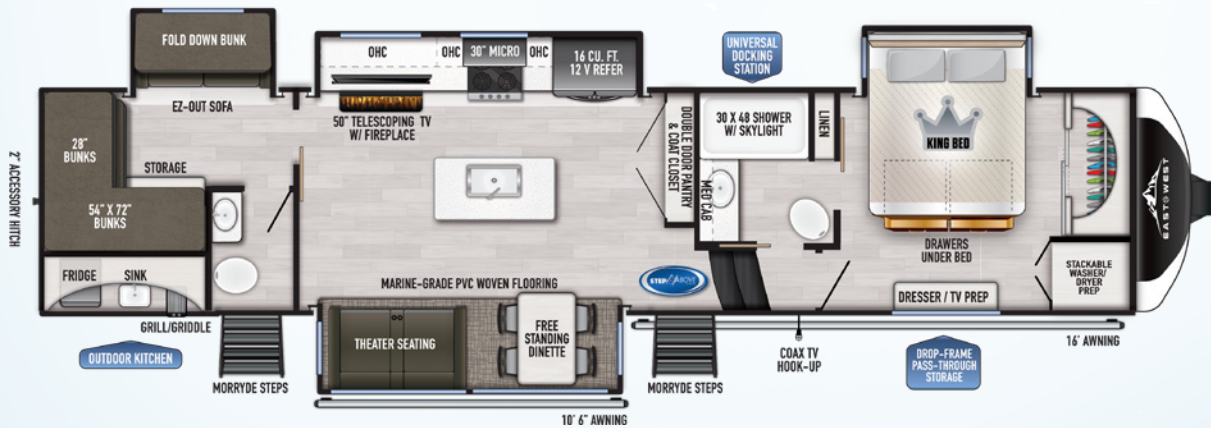
**REAR LOUNGE**  
 UNDER 35'



HITCH (LBS.): 2,273 U/VW (LBS.): 12,345 CCC (LBS.): 3,928 LENGTH: 37' 4"  
 EXTERIOR HEIGHT: 13' 5" WIDTH: 101" TANKS (F/G/B): 63 / 90 / 45 AWNING: 18' & 10' 6"

## 365RL

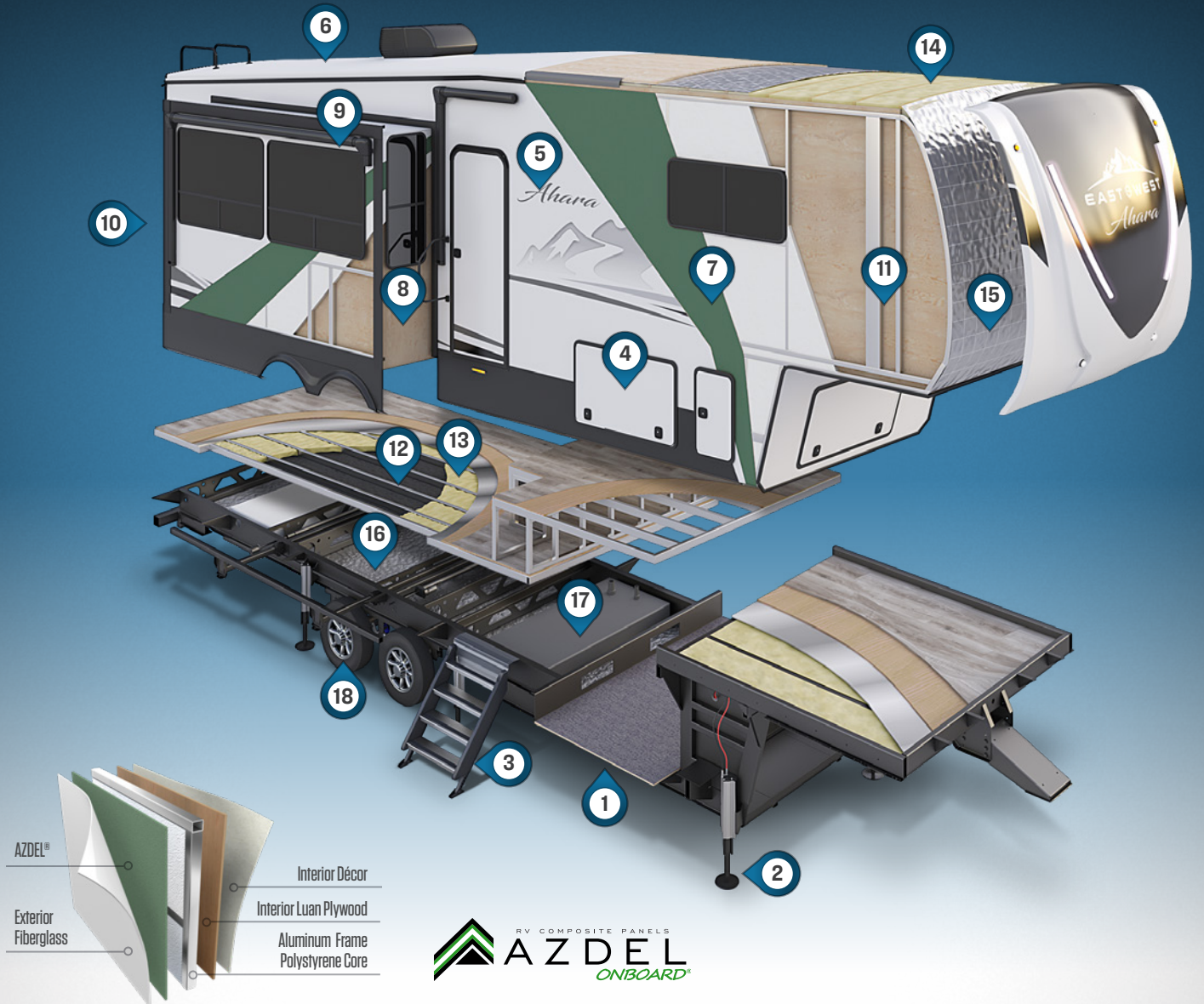
**REAR LOUNGE**  
 DOUBLE VANITY BATHROOM &  
 DOUBLE NIGHTSTAND BEDROOM



HITCH (LBS.): 2,605 U/VW (LBS.): 14,109 CCC (LBS.): 2,496 LENGTH: 41' 5"  
 EXTERIOR HEIGHT: 13' 6" WIDTH: 101" TANKS (F/G/B): 63 / 90 / 90 AWNING: 16' & 10' 6"

## 378BH-OK

**BUNK HOUSE**  
 HALF BATH & OUTDOOR KITCHEN



## AHARA CONSTRUCTION FEATURES

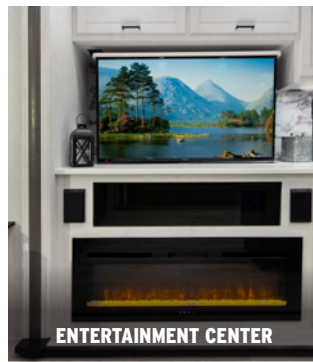
- |   |  |
|---|--|
| <p><b>1</b> 101" Wide-Body Chassis w/ Drop-Frame Pass-Through Storage Compartment</p> <p><b>2</b> 6-Point Hydraulic Automatic Leveling System</p> <p><b>3</b> MORryde StepAbove® Entry Steps</p> <p><b>4</b> Metal Slam Latch Cargo &amp; LP Doors</p> <p><b>5</b> High-Gloss Gel-Coated Fiberglass Exterior</p> <p><b>6</b> Dicor Diflex II™ TPO Roof w/ 12 Year Warranty</p> <p><b>7</b> Azdel Onboard® Laminated Sidewalls w/ 1.5 lb. Block Foam</p> <p><b>8</b> Azdel Onboard® Laminated Slide-out End Wall w/ 1.5 lb. Block Foam</p> <p><b>9</b> Azdel Onboard® Laminated Slide-Out Roof w/ 1.5 lb. Block Foam</p> <p><b>10</b> Azdel Onboard® Laminated Rear Wall</p> <p><b>11</b> Double Welded Aluminum Sidewall Framing</p> <p><b>12</b> Double Welded Aluminum Floor Joists (16" on Center)</p> | <p><b>13</b> Glued &amp; Screwed 5/8" Tongue &amp; Groove Plywood Floor (No OSB)</p> <p><b>14</b> Formaldehyde-Free Fiberglass Insulation in Roof, Front Cap &amp; Main Floor</p> <p><b>15</b> Radiant Technology Composites Foil Insulation in Roof, Front Cap &amp; Underbelly</p> <p><b>16</b> Heated, Insulated &amp; Enclosed Underbelly w/ Circulating Heat</p> <p><b>17</b> 12v Heat Pads on Holding Tanks</p> <p><b>18</b> MORryde CRE 3000 Suspension<br/>MORryde Heavy-Duty Shackles &amp; Wet Bolt Kit<br/>Dexter® Heavy-Duty 4,000 lb. Springs<br/>Dexter® Gladiator Thick Wall 7,000 lb. Axles w/ Nev-R-Adjust® Brakes<br/>Nitro-Filled G-Range Tires</p> |
|---|--|



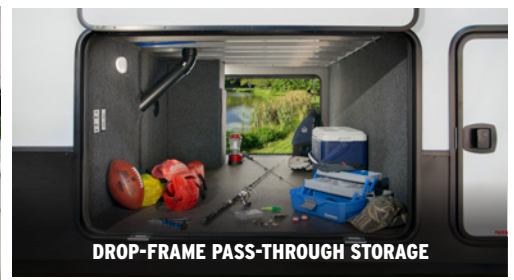
**UNIVERSAL ALL-IN-ONE DOCKING STATION**



**6-POINT HYDRAULIC AUTOMATIC LEVELING SYSTEM**



**ENTERTAINMENT CENTER**



**DROP-FRAME PASS-THROUGH STORAGE**



**BEDROOM STORAGE DRAWERS**



**16 CU. FT. 12V REFRIGERATOR**



**PULL-OUT TRASH CAN IN KITCHEN ISLAND**



**THEATER SEATING W/ ELECTRIC RECLINERS & USB CHARGERS**

## AHARA STANDARD & OPTIONAL FEATURES

### AHARA LUXURY PACKAGE

- 101" Wide-Body Chassis w/ Drop-Frame Pass-Through Storage Compartment
- 6-Point Hydraulic Automatic Leveling System
- 2nd Adjustable Power Awning w/ LED Lights
- MORryde StepAbove® Entry Steps
- Solid Surface Kitchen Countertops
- Seamless Fiberglass Shower
- 50" LED Television
- HDMI/AM/FM Bluetooth Entertainment System w/ Sound Bar Speakers
- 30" Over-The-Range Residential Microwave
- Metal Slam Latch Cargo & LP Doors
- Universal All-In-One Docking Station
  - \* *Outside Shower w/ Quick Connect Hose & Spray Nozzle*
  - \* *Waste Tank Flush*
  - \* *PowerFill Fresh Water Tank for Dry Camping*
  - \* *Exterior Water Pump Switch*
  - \* *Siphon Fill or Sanitize Fresh Water Tank From Vessel Using Water Pump*
  - \* *EZ Winterization Valve*
  - \* *Battery Kill Switch*
- 10 Gallon Water Heater
- Stackable Washer/Dryer Prep
- Roof Mounted Solar Prep

### AHARA 4 SEASONS PACKAGE

- Azdel® Laminated Sidewalls, Slide-out End Walls, Slide-out Roofs, and Rear Wall w/ 1.5 lb. Block Foam Insulation
- High-Efficiency Triple A/C System
- Ductless Flooring w/ 5/8" Tongue & Groove Plywood Floor Decking (No OSB)
- 40,000 BTU High-Capacity Furnace
- 48" Wide 5,100 BTU Electric Fireplace
- 12v Heat Pads on Holding Tanks
- Heated, Insulated & Enclosed Underbelly & Dump Valves w/ Circulating Heat
- Radiant Technology Composites Insulation in Roof, Front Cap & Underbelly
- Formaldehyde Free Fiberglass Insulation in Roof, Front Cap & Main Floor
- Dual Attic Vents

### AHARA TOWING PACKAGE

- Aerodynamic Fiberglass Front Cap
- Seamless High Visibility LED Front Cap Lights
- LED Marker Lights
- LED Taillights w/ Back-Up Lights
- MORryde CRE 3000 Suspension
- MORryde Heavy-Duty Shackles & Wet Bolt Kit
- Dexter Gladiator Thick Wall 7,000 lb. Axles w/ Nev-R-Adjust Brakes
- Dexter Heavy-Duty 4,000 lb. Springs
- Nitro-Filled 6-Range Tires
- Under Carriage Spare Tire & Carrier
- LionsHead Specialty Tire & Wheel "1 Year No Excuses Guarantee" Program
- Rear View Camera Prep
- 2" Rear Accessory Hitch
- Driver's Side Automatic Leveling System Control Box

### EXTERIOR

- High-Gloss Gel Coated Fiberglass Exterior
- Deep Tint Safety Glass Windows
- Residential Wood-Framed Roof
- Factory Installed Roof Ladder
- 2" Thick Double-Welded Aluminum Framed Sidewalls, Rear Wall, Front Bulkhead Wall & Slide-Out Rooms
- Double-Welded & Fully Framed Window, Entry Door, Cargo Door and Slide-out Openings
- 3" x 2" Double-Welded Aluminum Floor Joists (16" On Center)
- 50 AMP Electrical Service
- Detachable 50 AMP Power Cord
- 60 AMP Converter w/ Charge Wizard Technology & Lithium or Lead Acid Battery Selector Switch
- 30" Wide x 78" Tall Entry Door
- Adjustable Power Awning w/ LED Lights
- High-Capacity Water Pump w/ Interior & Exterior Switches
- EZ Access Low Point Drain Valves
- 30 lb. LP Bottles (2)
- LP Quick-Connect
- Winegard® Air 360+ TV Antenna w/ WiFi Prep
- Exterior Cable/Satellite Hookup in Pass-Through Storage Compartment
- LED Motion Sensor Lights in Pass-Through Storage and Outside Kitchen Compartments
- Safety Light Kit: Entry Steps
- Marine Grade LED Light at Sewer Termination

### INTERIOR

- Barrington Maple Interior Décor
- Residential Shaker Style Cabinet Doors w/ Hidden Hinges
- Solid Core Cabinet Stiles
- Pre-Drilled & Screwed Cabinetry
- Ball Bearing Full Extension Drawer Guides
- Wall Hugger Theatre Seats
- Wall Mounted Free Standing Dinette w/ 4 Chairs
- 6' 6" Tall Main Slide-out Interior Height
- Slow Rise™ Roller Shades
- LED Kitchen Pendant Lights (2)
- LED Motion Sensor Lights in Bathroom Hallway & Bedroom Closets
- Vinyl Flooring in Living Area, Kitchen, Bathroom & Bedroom (No Carpet)
- Marine Grade Woven PVC Flooring in Flush Floor Slide-Outs
- Deep-Seated Stainless Steel Farmhouse Sink
- Roll-Up Stainless Steel Drying Rack
- Residential High-Rise Faucet w/ Pull-Down Sprayer
- Kitchen 12v MAXXAIR MAXXFAN®
- Pull-Out Trash Can in Kitchen Island
- 16 Cubic Foot 12v Refrigerator
- 21" Oven & Range w/ Flush Mount Range Cover
- 6' 6" Tall Main Bathroom Interior Height
- Porcelain Toilet w/ Foot Flush
- Skylight Over Shower
- Bathroom 12v Power Vent Fan
- Extra Large Seamless Lav Top w/ Undermounted Sink
- Large Medicine Cabinet w/ Mirror
- 70" x 80" Serta® King Bed w/ Residential Bedspread
- Bedside USB & Electrical Outlets
- Bedside Nightstands
- Bed Base Drawers
- Bedroom Cable/Satellite Hookup

### OPTIONS

- 12 Cubic Foot 4-Door Gas/Electric Refrigerator
- Wall Mounted Booth Dinette w/ 2 Benches
- Generator Prep
- Solar Package (320-Watt Solar Panel w/ 50 AMP MPPT Controller and 2000 Watt Inverter)
- Dual Pane Windows
- Super Duty Towing Package (MORryde Rubber Pin Box & Dexter Hydraulic Disc Brakes)

# OUR COMPANY TAKES PRIDE IN OUR FIVE GUIDING PRINCIPLES AND OUR CORPORATE PHILOSOPHY

which focuses on people working together to create high quality, value-added products that deliver the ultimate RV experience.

## SUSTAINABLE MANUFACTURING

An important objective to our strategy and operations is to implement economically sound manufacturing processes to reduce/recycle waste & conserve energy and natural resources.

## CORPORATE & SOCIAL RESPONSIBILITY

We foster a business environment in which we focus on and practice:

- > Ethical Labor Practices
- > Teamwork
- > Philanthropy
- > Volunteering

## CULTURE & VALUES

We are a forward thinking company committed to fostering a culture of teamwork. By being transparent, we encourage our employees to think outside the box and make a difference!

## QUALITY & CONSTRUCTION

Our team takes pride in each unit we build. Our manufacturing standards and point to point inspections ensure each EAST TO WEST brand is built to the same quality specifications every time.

## OUR COMMITMENT

We strive to provide the highest quality products at the best possible price to our customers. We invite you to be a part of the EAST TO WEST family and we look forward to exceeding your expectations!



### 24/7 EMERGENCY ROADSIDE ASSISTANCE WITH VEHICLE PURCHASE\*

TOWING	WINCH-OUT
JUMP-STARTS	MOBILE MECHANIC
TIRE CHANGES	TECHNICAL
FLUID DELIVERY	SUPPORT
LOCKOUT	DEALER LOCATOR
SERVICE	SERVICES



\*VALID FOR 1 YEAR FROM DATE OF PURCHASE



### PRE-DELIVERY INSPECTION FACILITY

20,000 square feet of quality assurance. The bare essentials for a premium product. This state-of-the-art facility gives immediate daily feedback to production for quality assurance in every unit built.

## CUSTOMER SATISFACTION



[www.ForestRiverBuyLocal.com](http://www.ForestRiverBuyLocal.com)



@easttowestr



East To West RV



**Learn More**  
Scan this barcode using a QR Reader on your smart phone to learn more about Forest River.



A Berkshire Hathaway company.

3000 COUNTY ROAD 6 WEST ELKHART, IN 46514  
[WWW.EASTTOWESTRV.COM/AHARA](http://WWW.EASTTOWESTRV.COM/AHARA) 574.264.6664

YOUR *Ahara* DEALER

**GVWR (Gross Vehicle Weight Rating)** - is the maximum permissible weight of the unit when fully loaded. It includes all weights, inclusive of all fluids, cargo, optional equipment and accessories. For safety and product performance do NOT exceed GVWR. **GAWR (Gross Axle Weight Rating)** - is the maximum permissible weight, including cargo, fluids, optional equipment and accessories that can be safely supported by a combination of all axles. **UVW (Unloaded Vehicle Weight)\*\*** - is the typical weight of the unit as manufactured at the factory. It includes all weights at the unit's axle(s) and tongue or pin and LP Gas. The UVW does not include cargo, fresh potable water, additional optional equipment or dealer installed accessories. \*Estimated Average based on standard build optional equipment. **CCC (Cargo Carrying Capacity)\*\*** - is the amount of weight available for fresh potable water, cargo, additional optional equipment and accessories. CCC is equal to GVWR minus UVW. Available CCC should accommodate fresh potable water (8.3 lbs per gallon). Before filling the fresh water tank, empty the black and gray tanks to provide for more cargo capacity. \*\*Estimated average based on standard build optional equipment.

Each East to West RV is weighed at the manufacturing facility prior to shipping. A label identifying the unloaded vehicle weight of the actual unit and the cargo carrying capacity is applied to every East to West RV prior to leaving our facilities. The load capacity of your unit is designed by weight, not by volume, so you cannot necessarily use all available space when loading the unit. All information contained in this brochure is believed to be accurate at the time of publication. However, during the model year, it may be necessary to make revisions and Forest River, Inc., reserves the right to make all such changes without notice, including prices, colors, materials, equipment and specifications as well as the addition of new models and the discontinuance of models shown in this brochure. Therefore, please consult with your Forest River dealer and confirm the existence of any materials, design or specifications that are material to your purchase decision. Litho. U.S.A. FOR 2032 P&W: 2022.06.14