

CLASS-C

WAYFARER

MODEL YEAR 2023 | PRODUCT UPDATES

Initial MY2023 Model Change Plans, Subject to Change in Full Production

Date Revised: 5/26/22

TIFFIN

20
23

What's New Summary - Wayfarer

WHAT'S NEW

- 25 JW Floorplan
- Generation 5 Paint Schemes
- Sea Mist and 50th Anniversary Exterior Paint Color Packages
- Shadow
- 50th Anniversary Decal
- Roller Shades
- Redesigned Galley
- Redesigned Sofas
- Closet Pull Out on 25LW
- Undermounted Lavatory Sink and Chrome Faucet on 25JW and 25RW
- Flush Mounted Valances
- Ports for DVD Player
- Blackout, Snap Cab Curtains for Bunk
- Chrome Hardware Standard
- Redesigned Sewer Bay
- IR Extender for Exterior T.V. (Only Available with In-motion Satellite)
- 28-gallon Fresh Tank Capacity on 25RW and 25JW
- Entry Lights on Driver and Passenger Sides
- Deleted Gear Rack on 25LW
- All-electric Coach Option

NO LONGER AVAILABLE

- 25 SW Floorplan
- Generation 3 Paint Schemes
- Sterling Fabric Suite
- Harmony Exterior Paint Color Package
- Acier Gray/Chateua and Russet Cabinetry

Premium Paint System

Our eight-step, full-body paint system features premium grade paints sealed with three layers of superclear coat with ultraviolet protection. An additional layer of high-performance film protects the front of the coach and select areas.

Initial MY2023 Model Change Plans, Subject to Change in Full Production

Generation 4 Paint Schemes



G4 SILVER SAND



G4 SAND DRIFT



G4 SEA MIST



G4 OBSIDIAN

Generation 5 Paint Schemes



G5 SILVER SAND

NEW



G5 SAND DRIFT

NEW



G5 SEA MIST

NEW



G5 OBSIDIAN

NEW



50TH ANNIVERSARY

NEW

Optional Floor Plans



The design of every Wayfarer floor plan must meet four essential criteria: Maximum space, Optimal organization, Relaxation plus, and Elegant atmosphere. Tiffin's MORE Plans offer your family the most comfortable layout for life on the road.

If optional furniture combinations are selected, window locations may vary from diagram shown.

All options may not be available in every model. Because of progressive improvements and specifications, standard and optional equipment are subject to change without notice or obligation.

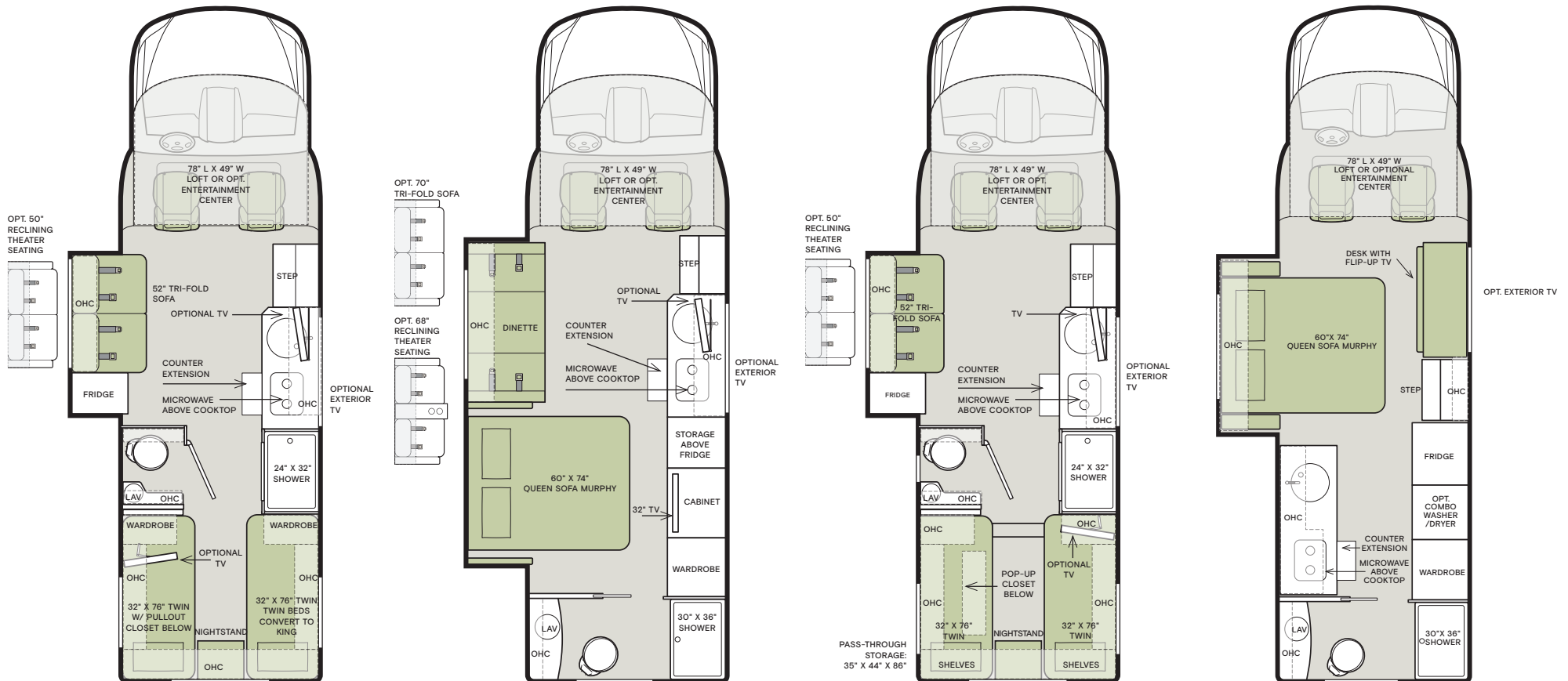
For a complete and up-to-date list of available options and specifications, visit tiffinmotorhomes.com.

25 TW

25 RW

25 LW

25 JW **NEW**



NO LONGER AVAILABLE

• 25 SW Floor Plan

Interior Décor

Make it all yours. Personalize your décor experience with the Wayfarer's customization options. Choose between our four décor packages, as well as handcrafted wood cabinetry. The Wayfarer's luxury design options allow you to arrive and live in style, wherever your travels and adventures take you.

CABINETS



LINEN



SANDSTONE

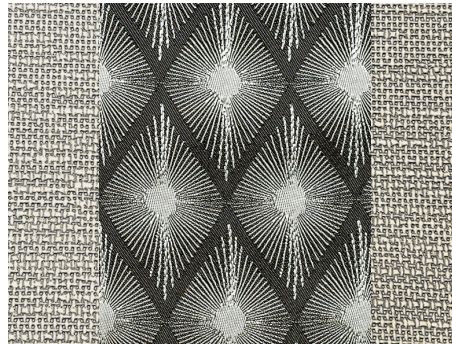


SHADOW

MINK



BEDROOM



WINDOW TREATMENT



COUNTERTOP



FURNITURE



FLOORING



WALLCOVERING

CHAMPAGNE



BEDROOM



WINDOW TREATMENT



COUNTERTOP



FURNITURE



FLOORING



WALLCOVERING

Specifications, Features, and Options

WEIGHTS AND MEASURES	25 TW	25 RW	25 LW	25 JW
Overall Length (approximately) ¹	25' 8"	25' 8"	25' 8"	25' 8"
Overall Height (max.)	11' 4"	11' 4"	11' 4"	11' 4"
Interior Height	80"	80"	80"	80"
Overall Width ¹	90"	90"	90"	90"
Interior Width	87"	87"	87"	87"
LPG Tank (gal.)	12	12	12	12
Basement Storage (cubic ft., approx.)	68	37	130	54
GAWR—Front (pounds)	4,410	4,410	4,410	4,410
GAWR—Rear (pounds)	7,720	7,720	7,720	7,720
GVWR (pounds)	11,030	11,030	11,030	11,030
Trailer Hitch Capacity (pounds) ²	5,000	5,000	5,000 ³	5,000
GCWR (pounds)	15,250	15,250	15,250	15,250
Wheel Base	170.3"	170.3"	170.3"	170.3"
Tire Size	LT 215/85 R 16	LT 215/85 R 16	LT 215/85 R 16	LT 215/85 R 16
Fuel Tank (gal.)	24.5	24.5	24.5	24.5
DEF Tank (gal.) ⁴	4.8	4.8	4.8	4.8
Fresh Water (gal.)	38	30	32	30
Black Water (gal.)	28	28 UPDATED	28	28
Grey Water (gal.)	32	36	32	33

¹ The approximated coach width and length does not include side-view mirrors.

² Tow ratings and ability are subject to gross combined weight ratings on the tow vehicle, 500 lb Vertical Tongue Weight and 7-pin Connector

³ 1 1/2 receiver

⁴ Diesel Exhaust Fluid (DEF) is the active component used in Selective Catalytic Reduction (SCR) engines to reduce nitrogen oxide emissions by 90% to meet EPA standards.

CHASSIS, DRIVETRAIN, AND CAB

MERCEDES-BENZ 3500XD DUAL WHEEL CUTAWAY CHASSIS FEATURES

- 3.0 6-cylinder Turbo Diesel Engine with 7-speed Automatic Tip Shift Speed Transmission 188 HP/325 lb-ft Torque
- Aluminum Wheels
- BigFoot® Hydraulic Leveling System
- SumoSprings Ride Assist System

SAFETY FEATURES

- Attention Assist
- Active Brake Assist (Collision Mitigation)
- Active Distance Assist Distronic (Adaptive Cruise Control)
- Traffic Sign Assist
- Lane Keeping Assist
- Load Adaptive Electronic Stability (ESP)
- High Beam Assist

DRIVER'S COMPARTMENT

- MBUX Multimedia System with 10.25" Touchscreen
- Leather Wrapped Steering Wheel with Integrated Controls
- Manual Parking Brake
- Heated, Electrically Adjustable Mirrors
- Intelligent Navigation
- Emergency Call System
- Black Leather Driver and Passenger Seats with Heat, Powered Adjustability, and Swivel Bases
- Smartphone Integration for Apple Carplay® and Android™ Auto
- Wireless Internet Access
- Keyless Start
- Tray for Smartphones with Charging Ports
- Power Cab Door Locks and Windows
- Windshield with Filter Band
- Instrument Cluster with Color Display
- Rain Sensor for Windshield Wipers

AVAILABLE OPTIONS

- Side-view Cameras

ELECTRICAL

- Spyder Multiplex Coach Control System
- 15,000-BTU Mid Air Conditioner
- Wall-mount Thermostat with Built-in Temperature Sensor
- Two 12-Volt House Batteries (Group 27, 180-Amp Hours)
- 110-Volt and 12-Volt House Load Center with Power Converter
- 30,000-BTU Propane Ducted Furnace
- 30-Amp, 110-Volt House Service
- HD Over-the-air TV Antenna
- 12-Volt Engineered Wiring Harnesses
- 3.2-Kilowatt Diesel Generator
- Park Cable and Ground Satellite Hook-up
- Smart Plug Detachable 30-Amp Shore Power Cord **NEW**
- 2,000-Watt Inverter Pure Sine

ELECTRICAL OPTIONS	25 TW	25 RW	25 LW	25 JW	
Solar Panels	Pre-wired for Solar Panels	S	S	S	S
	Complete Solar System with 190-Watt Solar Panel	O	O	O	O
Satellite	Prep for Satellite	S	S	S	S
	In-Motion Satellite	O	O	O	O
Lithium Battery Drop-in Solution		O	O	O	O
Cellular Signal Booster		NEW	O	O	O
Wi-Fi Booster		UPDATED	O	O	O
All-electric Coach ¹		NEW	O	O	O

¹ Removes liquid propane tank, furnace, and water heater. Option must be combined with 12-Volt Refrigerator. Includes Elwell Hydronic Heating System.; This does not replace the need for shore power or a generator to operate air conditioning.

PLUMBING

- Heated Holding Tanks
- Aquaview Showermiser
- Redesigned Sewerbay **UPDATED**

ELECTRICAL OPTIONS	25 TW	25 RW	25 LW	25 JW
Truma® Comfort Plus Instant Hot Water Heater	S	S	S	S

EXTERIOR

- Girard® 16" Wind Sensor Awning with Speakers
- Entrance Door Assist Handle
- Driver and Passenger Side Front Cap Exterior Entry Light **NEW**
- Automatic Lights in Exterior Compartment Doors

EXTERIOR OPTIONS	25 TW	25 RW	25 LW	25 JW
Exterior TV ¹	O	O	O	O

¹ Exterior TV now has IR extende when optioned with In-motion Satellite.

INTERIOR

- Stereo System with Separate Speaker Zones
- Soft Vinyl Ceiling
- Swivel Tables
- LED Lights
- Combination Carbon Monoxide and Propane Detector
- Day and Night Privacy Shades **NEW**
- 2 Captain's Chair Lounge Cushions
- Roof Vent Fan
- Window Valances **UPDATED**
- HDMI Ports **NEW**

INTERIOR OPTIONS	25 TW	25 RW	25 LW	25 JW
Handcrafted Cabinetry ¹	Linen	O	O	O
	Sandstone	O	O	O
	Shadow NEW	O	O	O
Fabric Suites ²	Mink	O	O	O
	Champagne	O	O	O
Wallcovering	Reston Ivory	S	S	S
Central Vacuum System with Retractable Hose	O	O	O	O
Privacy Curtain	—	O	—	—

¹ Russett and Acier Gray/Chateau will no longer be available.

² Sterling and Oasis will no longer be available.

LIVING AREA/DINETTE	25 TW	25 RW	25 LW	25 JW
Television	Bedroom TV	S	S	O
	Front TV	O	O	S
Driver's Side	50" Sofa with Trifold Hide-a-bed (42" x 74")	S	—	S
	50" Electric Theater Seats (No Cupholders)	O	—	O
	Face-to-face Booth Dinette ¹ UPDATED	—	S	—
	70" Sofa with Trifold Hide-a-bed (54" x 74")	—	O	—
	68" Electric Theater Seats	—	O	—
Overhead	Bunk with Privacy Curtains UPDATED	S	S	S
	TV & Entertainment Center ²	O	O	—
Combo Washer/Dryer	—	—	—	O

¹ Replaces Front TV with storage.

KITCHEN

- LP Cooktop with Built-in Cover ¹ **UPDATED**
- Designer Faucet
- 110-Volt Outlet
- Convection Microwave
- Over-the-counter Lighting
- Countertop Extension
- Single Bowl Sink ¹ **UPDATED**
- Under-the-counter Lighting
- Chrome Hardware **NEW**
- Fire Extinguisher

KITCHEN OPTIONS	25 TW	25 RW	25 LW	25 JW
12-Volt 5-Cubic Foot Refrigerator	S	—	S	—
Gas/Electric 5-Cubic Foot Refrigerator	O	—	O	—
12-Volt 6.5-Cubic Foot Refrigerator	—	S	—	S
Gas/Electric 6.5-Cubic Foot Refrigerator	—	O	—	O

¹ Cooktop and sink have swapped places on galley for 2023.

BEDROOM

- Inverted Outlets in Bedroom for CPAP Machine
- USB Port with 110-Volt Plug
- LED Reading Lights
- Wardrobe

BEDROOM FEATURES AND OPTIONS	25 TW	25 RW	25 LW	25 JW
Bedroom TV	—	S	—	—
Queen Sofa Murphy Bed (60" x 74")	—	S	—	—
Two Twin Mattresses (32" x 76")	S	—	—	—
Converts into King Bed (86" x 76")	—	—	—	—
Two Twin Mattresses (32" x 76")	—	—	S	—
Pop-up Closet Storage on Driver Side	—	—	—	—
Queen Mattress (60" x 74")	—	—	—	S
Closet Pull Out NEW	—	—	S	—

BATHROOM

- Vanity Storage
- Adjustable Height Shower Head
- Roof Vent Fan
- LED Lighted Mirror

BATHROOM FEATURES AND OPTIONS	25 TW	25 RW	25 LW	25 JW
One-piece Fiberglass Shower (30" x 36") with Skylight	—	S	—	S
One-piece Fiberglass Shower (24" x 32") with Skylight	S	—	S	—
Porcelain Vessel Sink with Chrome Faucet UPDATED	S	—	S	—
Flush Mounted Lavi Sink with Chrome Faucet NEW	—	S	—	S

1

YEAR OR 12,000 MILES
LIMITED WARRANTY

3

YEARS PAINT
DELAMINATION
LIMITED WARRANTY

5



YEARS OR 100,000 MILES
CHASSIS POWERTRAIN
LIMITED WARRANTY

3

YEARS OR 36,000 MILES
MERCEDES-BENZ CHASSIS
LIMITED WARRANTY

1

YEAR COACH
ROADSIDE SERVICES

FOR PARTS & SERVICE CALL 205.487.4710 OR VISIT TIFFINMOTORHOMES.COM
625 FAWN GROVE ROAD, WINFIELD, AL 35594  



TIFFIN

MOTORHOMES