

# BIG COUNTRY



RV COMPOSITE PANELS



Where Value Meets Luxury

# BIG COUNTRY



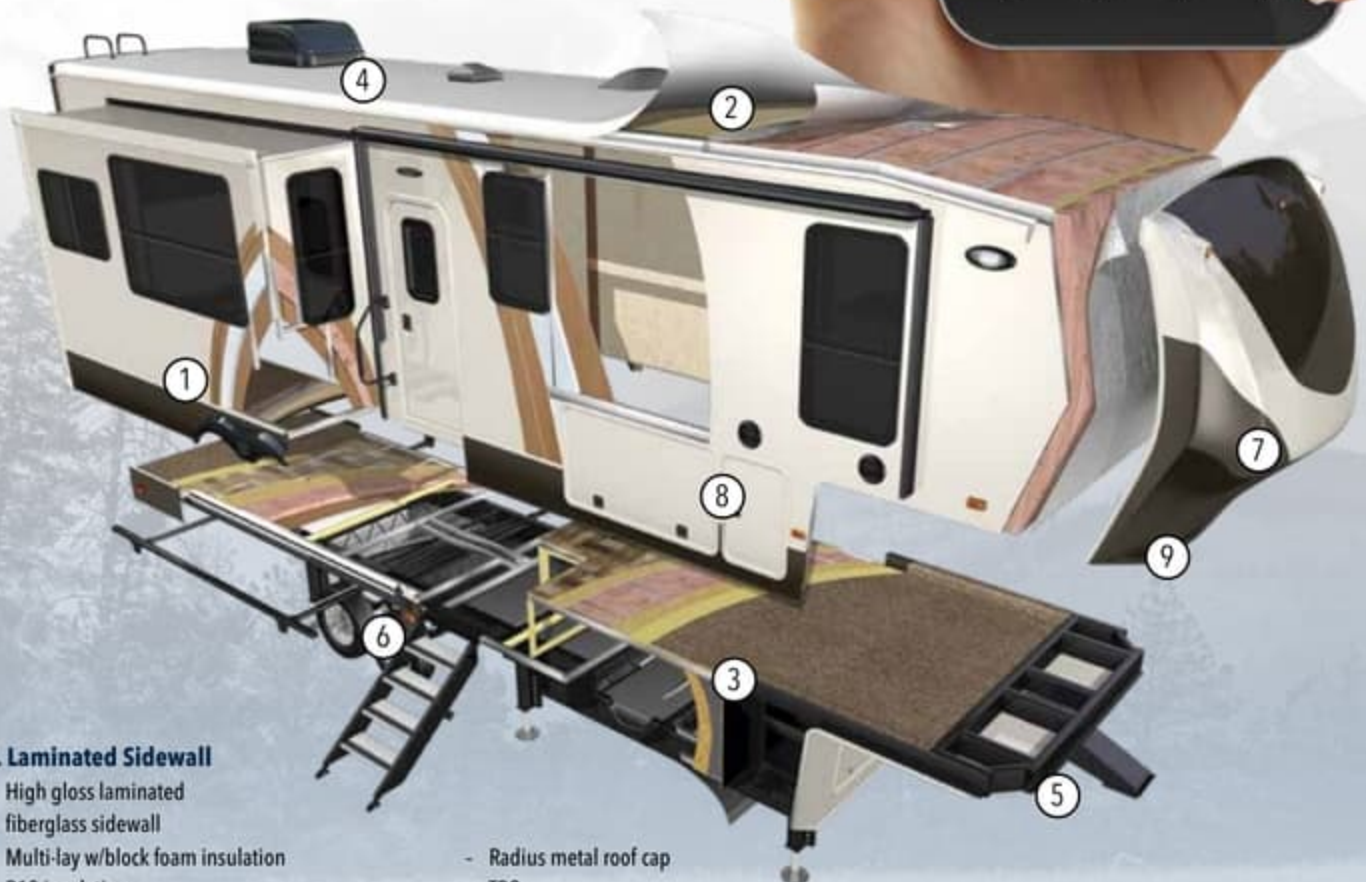
RV COMPOSITE PANELS  
**AZDEL**  
ONBOARD®



Where Value Meets Luxury



Leave old switch-based analog technology in the dust with the **OneControl** mobile app! This technology lets users remotely control and monitor many RV systems from a smartphone or tablet.



**1. Laminated Sidewall**

- High gloss laminated fiberglass sidewall
- Multi-layer w/block foam insulation
- R13 insulation
- Deluxe power exterior awning w/led light
- Drip rail w/down spouts
- Dual Layer Azdel composite sidewalls

**2. Roof Construction**

- 5" Aluminum frame
- R40 insulation
- One-piece walkable roof

- Radius metal roof cap
- TPO

**3. Laminated Floor Construction**

- Durable 2 1/2" aluminum framing
- Multi-layer w/block foam insulation
- 3/8" Seamless deck floor
- Main floor R38 - upper deck R14

**4. 30,000 BTU Whisper Quiet ducted A/C System**

**5. 12" I-Beam frame**

**6. G Rated tires w/ aluminum rims**

**7. Painted fiberglass cap**

**8. Insulated slam style cargo doors with magnetic hold backs**

**9. Tight Turn technology**

**10. Frameless Windows**



Leave old switch-based analog technology in the dust with the OneControl mobile app! This technology lets users remotely control and monitor many RV systems from a smartphone or tablet.



**1. Laminated Sidewall**

- High gloss laminated fiberglass sidewall
- Multi-layer w/block foam insulation
- R13 insulation
- Deluxe power exterior awning w/led light
- Drip rail w/down spouts
- Dual Layer Azdel composite sidewalls

**2. Roof Construction**

- 5" Aluminum frame
- R40 insulation
- One-piece walkable roof

- Radius metal roof cap
- TPO

**3. Laminated Floor Construction**

- Durable 2 1/2" aluminum framing
- Multi-layer w/block foam insulation
- 3/8" Seamless deck floor
- Main floor R38 - upper deck R14

**4. 30,000 BTU Whisper Quiet ducted A/C System**

**5. 12" I-Beam frame**

**6. G Rated tires w/ aluminum rims**

**7. Painted fiberglass cap**

**8. Insulated slam style cargo doors with magnetic hold backs**

**9. Tight Turn technology**

**10. Frameless Windows**



**BC 3155RLK**



**BC 3895FK**



**BC 3560SS**



**BC 3902FL**



**BC 3702FB**

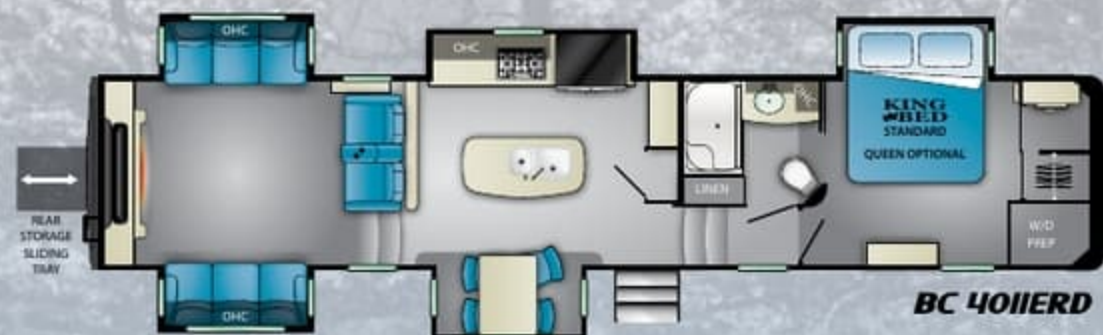
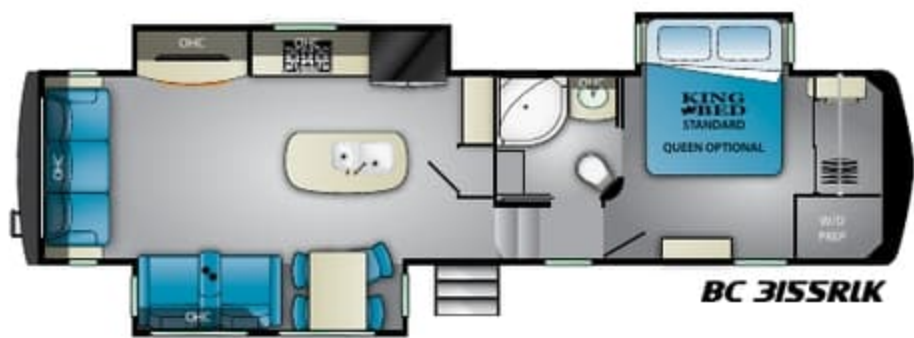


**BC 4011ERD**

MODEL	3155RLK	3560SS	3702RB	3895FK	3902FL	4011ERD
LENGTH	35' 9"	38' 10"	42' 1"	42' 3"	42' 7"	42' 0"
DRY	12,255	13,214	13,500	14,141	14,004	14,210
HITCH	2,365	2,821	2,930	2,907	3,657	3,175
HEIGHT	13' 3"	13' 3"	13' 3"	13' 3"	13' 3"	13' 3"

Note: Length defined as tow point (Ball coupler for travel trailers / King pin for 5th wheel trailers) to rear bumper. Add 9" w/ Extended Pin Box

**BIG COUNTRY**



MODEL	3155RLK	3560SS	3702RB	3895FK	3902FL	4011ERD
LENGTH	35' 9"	38' 10"	42' 1"	42' 3"	42' 7"	42' 0"
DRY	12,255	13,214	13,500	14,141	14,004	14,210
HITCH	2,365	2,821	2,930	2,907	3,657	3,175
HEIGHT	13' 3"	13' 3"	13' 3"	13' 3"	13' 3"	13' 3"

Note: Length defined as tow point (Ball coupler for travel trailers / King pin for 5th wheel trailers) to rear bumper. Add 9" w/ Extended Pin Box

# Standards and Options

## GENERAL EQUIPMENT:

### Frame

12" I-beam drop frame with powder coating

### Tires / Axles / Suspension

G-rated 16" tires with aluminum rims and leaf springs  
MOR/ryde 3000 suspension  
2 Shocks at each axle  
2" X 12" Nev-R-Adjust brakes by Dexter  
7,000 Lb. Dexter axles with easy lube hubs

### Underbelly

Seamless corrugated material  
Heated and enclosed underbelly  
Foil and batten insulation

### Interior/ Kitchen

Hardwood cabinetry and fascia  
All cabinet frames are pre-drilled and screwed together - no staples  
Deep stainless steel kitchen sink  
Recessed 3 burner cook top with oven and solid surface covers  
LED lighting throughout

### Living Room

Night shades throughout  
Ceiling fan  
Power theater seats  
Tri-fold sleeping sofa (most models)  
High-output entertainment system with dvd/ bluetooth and HDMI

### Bedroom

Bedroom slideout with under bed storage  
King size bed  
Walk-in wardrobe closet  
Stackable washer dryer closet (most models)  
6'-4" Bedroom ceiling height  
Reading lights over the bed  
32" deep bedroom electric cable slide room (most models)

### Bath Area

Porcelain commode with foot flush  
Roof vent  
Heat and A/C duct  
Large medicine cabinet  
6'-4" Bath ceiling height  
1-Piece fiberglass shower (mega/mini mega where available)  
Luxury glass shower surround

### Plumbing

Color-coded plumb-plex water liner with 10/25 year warranty  
Quick and easy winterization system

### Tank Size

65 Gallon fresh water system  
90 Gallon gray (most models)  
45 Gallon black tank (most models)  
(2) 30#LP bottles

### Power

80 Amp/12V DC power converter  
50 Amp detachable marine power cord  
110V exterior electrical receptacles  
Battery disconnect

### HVAC

40,000 BTU furnace  
Seamless one piece below floor heat duct  
30K BTU whisper quiet A/C system

### Other Interior Standards

Multi-seal slide room with one piece weather-proof floor pan  
ONE Control master control panel with tank monitors, slide and light switches

### Exterior Features

Large exterior storage fully lined with entertainment prep  
Insulated slam style cargo doors with magnetic hold backs  
Exterior speakers  
Light at entry step  
Extended hitch pin  
Large entry assist grab handle  
Rear ladder  
6-Point hydraulic level-up - auto leveling system  
300 watt solar panel w/ 1500 watt inverter

### Universal Docking Center - UDC

All system hook-ups in one convenient and concealed compartment  
Black tank flush system  
City water hook up with high pressure fresh tank fill  
Exterior shower with hot & cold water  
Satellite and antenna connections  
All holding tank pull handles are located in the UDC  
Winterization valves  
Water Filter

### Largest Exterior Storage In Its Class

Over 145 cubic feet of storage with 12V lighting (most models)  
Durable flooring with 3 D-type tie-down rings  
Unobstructed pass through design  
1 Cable connection / 110V outlet

### Safety Features

Smoke detector  
Fire extinguisher  
LP gas & CO2 detector inside unit  
Break away switch  
All safety glass windows  
120V GFI protected outlets  
Fire escape windows

### Options: Exterior

Slide toppers - awnings  
Dual pane frameless windows  
50Amp automatic power cord reel  
MOR/Ryde hitch  
5.5K Onan generator (prep required)  
Yeti extreme weather package

### Options: Interior

Bedroom TV  
Queen bed in place of king  
Three speed, temperature control fan in bathroom with rain sensor  
Heat pump options (ask dealer for details)  
22 cubic foot residential refrigerator

## BIG COUNTRY PACKAGES

### ELITE PACKAGE

High Gloss Sidewalls  
Painted Fiberglass Front Cap  
Aluminum Framed & Laminated Floors/Sidewalls  
Frameless Bonded Windows  
G Rated Tires  
EZ Lube Dexter Axles  
Nev-R-Adjust Brake Package  
Mor/Ryde 3000 Suspension with Shocks  
6-pt hydraulic level-up  
50AMP Service  
Battery Disconnect  
Universal Docking Center with Black Tank Flush and Exterior Shower  
Heated and Enclosed Underbelly  
Drop Frame Storage  
Slam Baggage Style Doors  
LED Stop/Turn/Tail Lights  
Pre Wire for Satellite System  
Spare Tire & Carrier  
Back-up Camera Prep  
Solar Prep  
Mor/Ryde Entry Steps  
Generator Ready

### INDEPENDENCE PACKAGE

Interior Cabinets and Fascia  
Solid Surface Counter Tops  
Drawers with Full Extension Drawer Guides  
80/20 Stainless Style Kitchen Sink with Residential Style Faucet  
Stainless Steel Gas Oven & Three Burner Cook Top  
30" Convection Microwave  
18Cu. Stainless Steel Gas/Electric Refrigerator  
Electric Fireplace  
30KBTU Whisper Quiet A/C System  
12 Gal DSI 110/12V Water Heater  
Fantastic Fan with Rain Sensor  
Washer/Dryer Prep  
One Piece Fiberglass shower  
Cold Crack Resistant floor  
Large LED TV  
Tri-Fold Sleeper Style Sofa  
Power Theater Style Seats with Heat & Massage  
Night Roller Shades  
LED Interior Lighting  
Expandable free standing dinette & chairs  
Pre-wired for satellite system  
Solar prep  
Back-up camera prep  
LED stop/turn tail lights

# WWW.HEARTLANDRVS.COM



Product information is as accurate as possible as of the date of publication of this brochure. Due to Heartland's commitment to continuous product improvement - floorplans, materials, components, features, measurements, specifications, options, etc. are subject to change at any time without notice or obligation. In certain conditions some additional equipment may be needed. Photos may show optional equipment or props used for photography purposes only.

Heartland has listed the approximate base weight of the trailer without the optional equipment included. Optional equipment will impact the weight of the trailer. Please locate the weight sticker attached to the trailer you are considering for the most accurate trailer weight.

Tow Vehicle Caution: Owners of Heartland recreational vehicles are solely responsible for the selection and proper use of tow vehicles. All customers should consult with a motor vehicle manufacturer or their dealer concerning the purchase and use of suitable tow vehicles for Heartland products. Heartland disclaims any liability or damages suffered as a result of the selection, operation, use or misuse of a tow vehicle. Heartland's limited warranty does not cover damage to the recreational vehicle or the tow vehicle as a result of the selection of the tow vehicle.

20,000 Litho 6/20



Heartland Recreational Vehicles  
2831 Dexter Drive  
Elkhart, Indiana 46514  
574-262-5992

Your Authorized Heartland Dealer:

# Standards and Options

## GENERAL EQUIPMENT:

### Frame

12" I-beam drop frame with powder coating

### Tires / Axles/ Suspension

G-rated 16" tires with aluminum rims and leaf springs  
MOR/ryde 3000 suspension  
2 Shocks at each axle  
2" X 12" Nev-R-Adjust brakes by Dexter  
7,000 Lb. Dexter axles with easy lube hubs

### Underbelly

Seamless corrugated material  
Heated and enclosed underbelly  
Foil and batten insulation

### Interior/ Kitchen

Hardwood cabinetry and fascia  
All cabinet frames are pre-drilled and screwed together - no staples  
Deep stainless steel kitchen sink  
Recessed 3 burner cook top with oven and solid surface covers  
LED lighting throughout

### Living Room

Night shades throughout  
Ceiling fan  
Power theater seats  
Tri-fold sleeping sofa (most models)  
High-output entertainment system with dvd/ bluetooth and HDMI

### Bedroom

Bedroom slideout with under bed storage  
King size bed  
Walk-in wardrobe closet  
Stackable washer dryer closet (most models)  
6'-4" Bedroom ceiling height  
Reading lights over the bed  
32" deep bedroom electric cable slide room (most models)

### Bath Area

Porcelain commode with foot flush  
Roof vent  
Heat and A/C duct  
Large medicine cabinet  
6' 4" Bath ceiling height  
1-Piece fiberglass shower (mega/mini mega where available)  
Luxury glass shower surround

### Plumbing

Color - coded plumb-plex water liner with 10/25 year warranty  
Quick and easy winterization system

### Tank Size

65 Gallon fresh water system  
90 Gallon gray (most models)  
45 Gallon black tank (most models)  
(2) 30#LP bottles

### Power

80 Amp/12V DC power converter  
50 Amp detachable marine power cord  
110V exterior electrical receptacles  
Battery disconnect

### HVAC

40,000 BTU furnace  
Seamless one piece below floor heat duct  
30K BTU whisper quiet A/C system

### Other Interior Standards

Multi-seal slide room with one piece weather-proof floor pan  
ONE Control master control panel with tank monitors, slide and light switches

### Exterior Features

Large exterior storage fully lined with entertainment prep  
Insulated slam style cargo doors with magnetic hold backs  
Exterior speakers  
Light at entry step  
Extended hitch pin  
Large entry assist grab handle  
Rear ladder  
6-Point hydraulic level-up - auto leveling system  
300 watt solar panel w/ 1500 watt inverter

### Universal Docking Center - UDC

All system hook-ups in one convenient and concealed compartment  
Black tank flush system  
City water hook up with high pressure fresh tank fill  
Exterior shower with hot & cold water  
Satellite and antenna connections  
All holding tank pull handles are located in the UDC  
Winterization valves  
Water Filter

### Largest Exterior Storage In Its Class

Over 145 cubic feet of storage with 12V lighting (most models)  
Durable flooring with 3 D-type tie-down rings  
Unobstructed pass through design  
1 Cable connection / 110V outlet

### Safety Features

Smoke detector  
Fire extinguisher  
LP gas & CO2 detector inside unit  
Break away switch  
All safety glass windows  
120V GFI protected outlets  
Fire escape windows

### Options: Exterior

Slide toppers - awnings  
Dual pane frameless windows  
50Amp automatic power cord reel  
Mor/Ryde hitch  
5.5K Onan generator (prep required)  
Yeti extreme weather package

### Options: Interior

Bedroom TV  
Queen bed in place of king  
Three speed, temperature control fan in bathroom with rain sensor  
Heat pump options (ask dealer for details)  
22 cubic foot residential refrigerator

## BIG COUNTRY PACKAGES

### ELITE PACKAGE

High Gloss Sidewalls  
Painted Fiberglass Front Cap  
Aluminum Framed & Laminated Floors/Sidewalls  
Frameless Bonded Windows  
G Rated Tires  
EZ Lube Dexter Axles  
Nev-R-Adjust Brake Package  
MorRyde 3000 Suspension with Shocks  
6-pt hydraulic level-up  
50AMP Service  
Battery Disconnect  
Universal Docking Center with Black Tank Flush and Exterior Shower  
Heated and Enclosed Underbelly  
Drop Frame Storage  
Slam Baggage Style Doors  
LED Stop/Turn/Tail Lights  
Pre Wire for Satellite System  
Spare Tire & Carrier  
Back-up Camera Prep  
Solar Prep  
Mor/Ryde Entry Steps  
Generator Ready

### INDEPENDENCE PACKAGE

Interior Cabinets and Fascia  
Solid Surface Counter Tops  
Drawers with Full Extension Drawer Guides  
80/20 Stainless Style Kitchen Sink with Residential Style Faucet  
Stainless Steel Gas Oven & Three Burner Cook Top  
30" Convection Microwave  
18Cu. Stainless Steel Gas/Electric Refrigerator  
Electric Fireplace  
30KBTU Whisper Quiet A/C System  
12 Gal DSI 110/12V Water Heater  
Fantastic Fan with Rain Sensor  
Washer/Dryer Prep  
One Piece Fiberglass shower  
Cold Crack Resistant floor  
Large LED TV  
Tri-Fold Sleeper Style Sofa  
Power Theater Style Seats with Heat & Massage  
Night Roller Shades  
LED Interior Lighting  
Expandable free standing dinette & chairs  
Pre-wired for satellite system  
Solar prep  
Back-up camera prep  
LED stop/turn tail lights

# WWW.HEARTLANDRVs.com



Product information is as accurate as possible as of the date of publication of this brochure. Due to Heartland's commitment to continuous product improvement - floorplans, materials, components, features, measurements, specifications, options, etc. are subject to change at any time without notice or obligation. In certain conditions some additional equipment may be needed. Photos may show optional equipment or props used for photography purposes only.

Heartland has listed the approximate base weight of the trailer without the optional equipment included. Optional equipment will impact the weight of the trailer. Please locate the weight sticker attached to the trailer you are considering for the most accurate trailer weight.

Tow Vehicle Caution: Owners of Heartland recreational vehicles are solely responsible for the selection and proper use of tow vehicles. All customers should consult with a motor vehicle manufacturer or their dealer concerning the purchase and use of suitable tow vehicles for Heartland products. Heartland disclaims any liability or damages suffered as a result of the selection, operation, use or misuse of a tow vehicle. Heartland's limited warranty does not cover damage to the recreational vehicle or the tow vehicle as a result of the selection of the tow vehicle.

20,000 Litho 6/20



Heartland Recreational Vehicles  
2831 Dexter Drive  
Elkhart, Indiana 46514  
574-262-5992

Your Authorized Heartland Dealer: