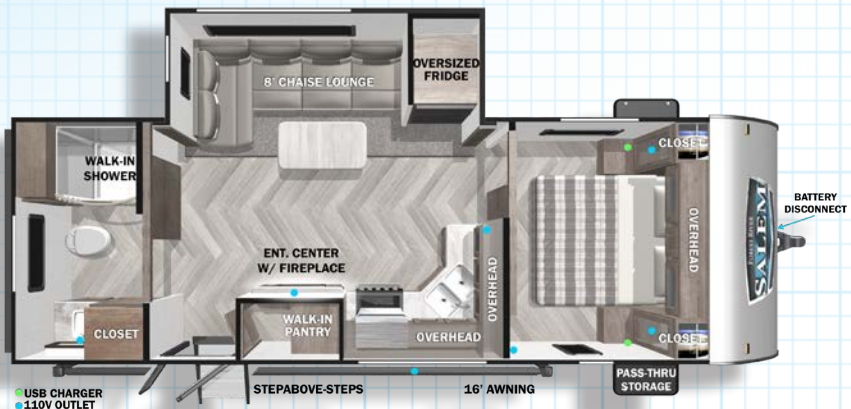
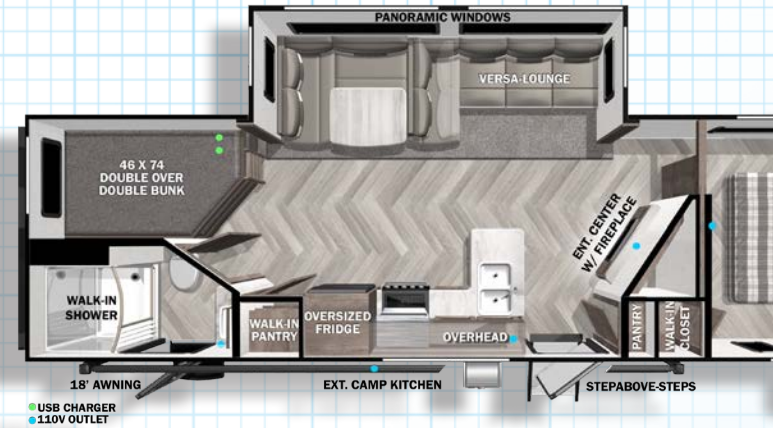


2022 SALEM TRAVEL TRAILERS

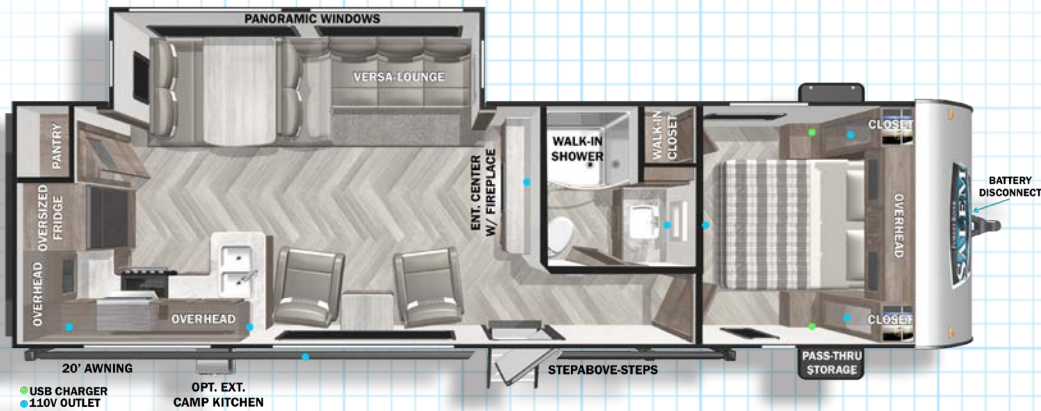




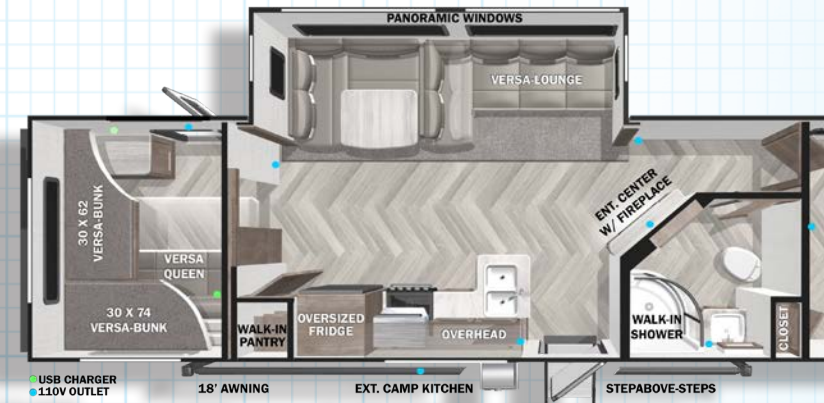
MODEL #: 22RBS UVW: 5,928 LBS LENGTH: 26'11"



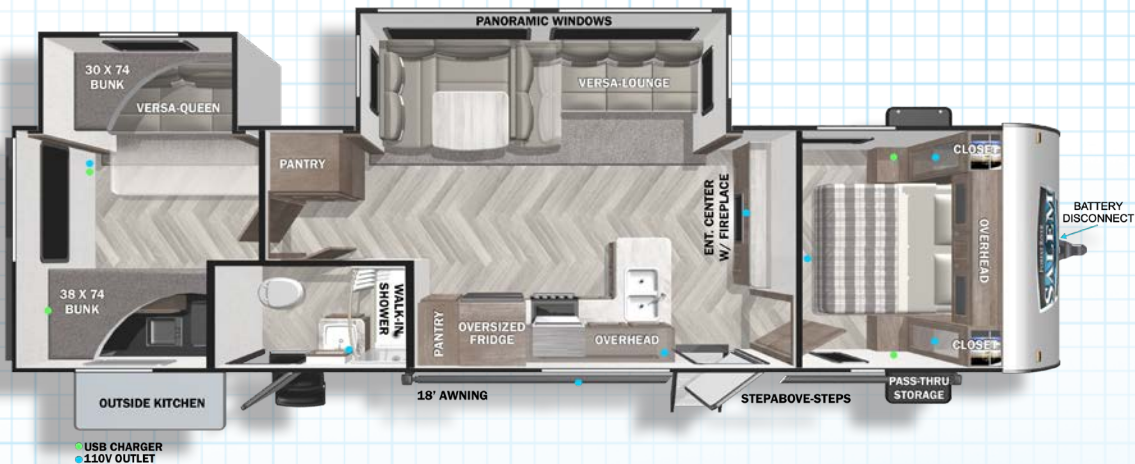
MODEL #: 26DBUD UVW: 6,923 LBS LENGTH: 28'11"



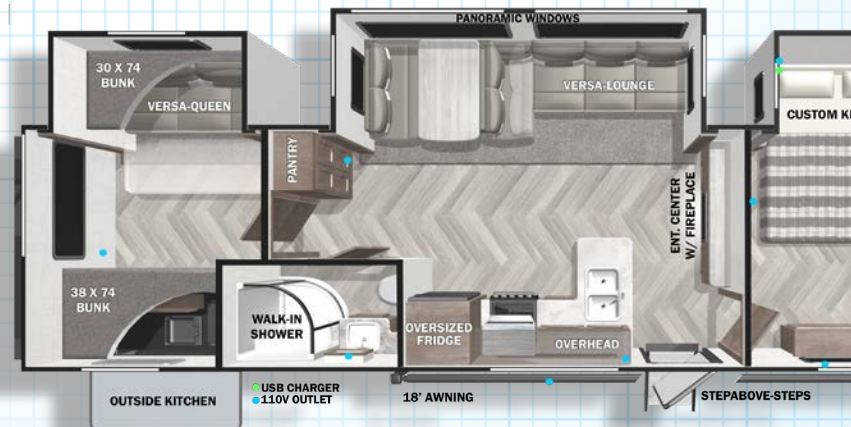
MODEL #: 27RK UVW: 6,863 LBS LENGTH: 33'6"



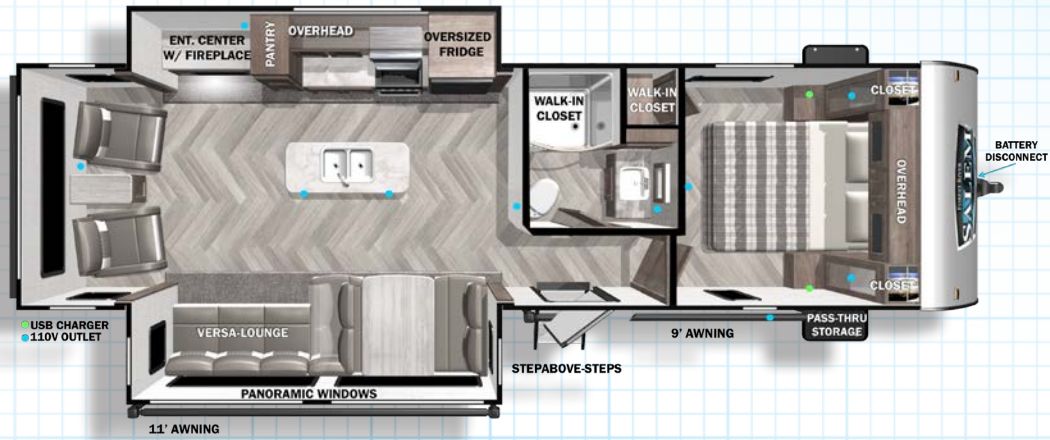
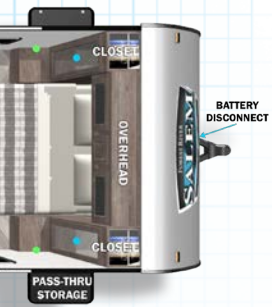
MODEL #: 29VBUD UVW: 7,728 LBS LENGTH: 30'11"



MODEL #: 32BHDS UVW: 7,993 LBS LENGTH: 36'5"

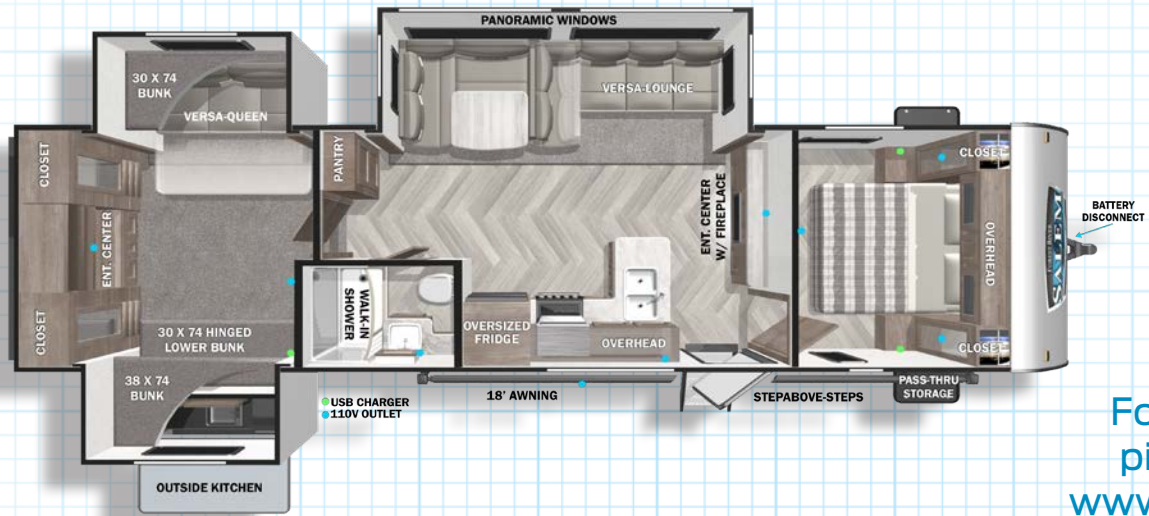
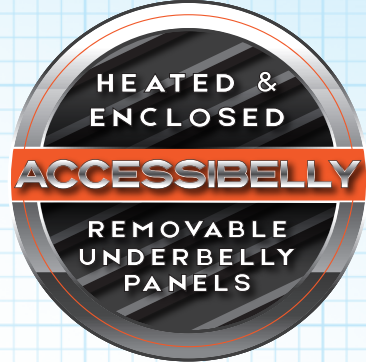


MODEL #: 33TS UVW: 9,276 LBS LENGTH: 38'11"



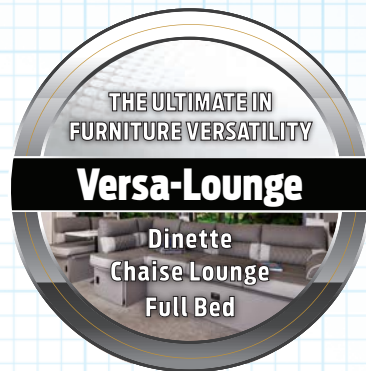
TH: 33'3"

MODEL #: 27RE UVW: 7,583 LBS LENGTH: 33'8"



TH: 36'2"

MODEL #: 31QBTS UVW: 8,573 LBS LENGTH: 36'7"



For detailed specifications, pictures & 360 Tours, visit www.forestriverinc.com/Salem

OR

Scan the QR code!



TH: 38'9"

MODEL #: 36VBDS UVW: 8,533 LBS LENGTH: 38'11"



SALEM PRODUCT FAMILY



FSX

CRUISE LITE

SALEM

VILLA / GRAND VILLA

HEMISPHERE



24/7 EMERGENCY ROADSIDE ASSISTANCE WITH VEHICLE PURCHASE*

TOWING
JUMP-STARTS
TIRE CHANGES
FLUID DELIVERY
LOCKOUT
SERVICE

WINCH-OUT
MOBILE MECHANIC
TECHNICAL
SUPPORT
DEALER LOCATOR
SERVICES



*VALID FOR 1 YEAR FROM DATE OF PURCHASE

FREE MEMBERSHIP to Forest River Owners' Group

www.forestriverfrog.com



Learn More
Scan this barcode using
a QR Reader on your
smart phone to learn
more about Forest River.



A Berkshire Hathaway company.

Specification Definitions

GVWR (Gross Vehicle Weight Rating) - is the maximum permissible weight of the unit when fully loaded. It includes all weights, inclusive of all fluids, cargo, optional equipment and accessories. For safety and product performance do NOT exceed the GVWR.

GAWR (Gross Axle Weight Rating) - is the maximum permissible weight, including cargo, fluids, optional equipment and accessories that can be safely supported by a combination of all axles.

UVW (Unloaded Vehicle Weight)* - is the typical weight of the unit as manufactured at the factory. It includes all weight at the unit's axle(s) and tongue or pin and LP Gas. The UVW does not include cargo, fresh potable water, additional optional equipment or dealer installed accessories.

*Estimated average based on standard build optional equipment.

CCC (Cargo Carrying Capacity)** - is the amount of weight available for fresh potable water, cargo, additional optional equipment and accessories. CCC is equal to GVWR minus UVW. Available CCC should accommodate fresh potable water (8.3 lbs per gallon). Before filling the fresh water tank, empty the black and gray tanks to provide for more cargo capacity.

** Estimated average based on standard build optional equipment

Each Forest River RV is weighed at the manufacturing facility prior to shipping. A label identifying the unloaded vehicle weight of the actual unit and the cargo carrying capacity is applied to every Forest River RV prior to leaving our facilities.

The load capacity of your unit is designated by weight, not by volume, so you cannot necessarily use all available space when loading your unit.

All information contained in this brochure is believed to be accurate at the time of publication. However, during the model year, it may be necessary to make revisions and Forest River, Inc., reserves the right to make all such changes without notice, including prices, colors, materials, equipment and specifications as well as the addition of new models and the discontinuance of models shown in this brochure. Therefore, please consult with your Forest River dealer and confirm the existence of any materials, design or specifications that are material to your purchase decision. Litho. U.S.A. FOR 1609 P/W: 2019.01.22

MEET YOUR SALEM DEALER

CUSTOMER SATISFACTION



www.ForestRiverBuyLocal.com



PRE-DELIVERY INSPECTION FACILITY

20,000 square feet of quality assurance. The bare essentials for a premium product. This state-of-the-art facility gives immediate daily feedback to production for quality assurance in every unit built.