

WHERE VALUE
MEETS LUXURY



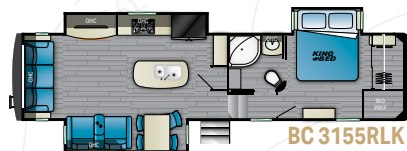
BIG COUNTRY

 BROUGHT TO YOU BY
HEARTLAND

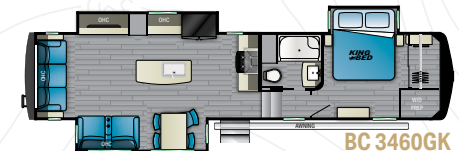
TOP 5

EXTERIOR FEATURES

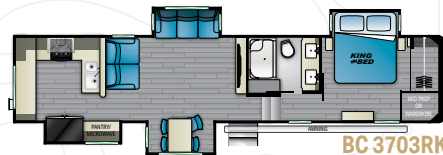
- 1 | COUNTRY QUALITY MATERIALS**
 - Double Layer Azdel Composite Panels
 - TPO Roofing Material with 4" Aluminum Wrapped Edge
 - 12" Powder Coated Steel I-Beam Frame Front to Rear
- 2 | SUPER STORE MORE PASS THROUGH STORAGE**
 - Innovative Storage Design
 - Three points of Access Provides Easy Loading and Unloading
 - Maximized Storage Capacity on a Drop Frame
- 3 | COUNTRY ROAD SUSPENSION**
 - Double 7,000lb Dexter EZ Lube Axles
 - Dexter NEV-R-ADJUST Brake System Provides 50% Better Stopping Power
 - MORryde 3000 Suspension with Leaf Springs, Wet Bolt Kit, and Shock Absorbers
- 4 | COUNTRY BUILT CONSTRUCTION**
 - 2" Thick Sidewall with Aluminum Super Structure and High Density Block Foam Insulation
 - Triple H Aluminum Tube Structure for Added Strength and Durability in Sidewalls and Slide outs
 - Triple Insulated Floor: Laminated Floors, Radiant Foil, and Block Foam Insulation
- 5 | BIG COUNTRY STANDARDS**
 - Upgraded Rota Flex Pin Box to Help Prevent Against Coach Chucking
 - 12V Power Cord Reel: As Easy as Pushing A Button
 - Zero Gravity Entrance Step Friendly for All Ages



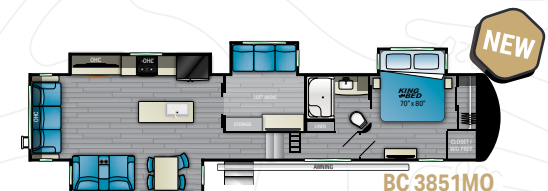
LENGTH: 36' 5" | **HEIGHT:** 13' 3" | **HITCH:** 2,365 LBS.
DRY: 12,255 LBS. | **GVWR:** 16,000 LBS. | **SLEEP CAPACITY:** 3-4



LENGTH: 38' 10" | **HEIGHT:** 13' 3" | **HITCH:** 2,660 LBS.
DRY: 12,402 LBS. | **GVWR:** 16,500 LBS. | **SLEEP CAPACITY:** 3-4



LENGTH: 41' 1" | **HEIGHT:** 13' 3" | **HITCH:** 2,780 LBS.
DRY: 13,140 LBS. | **GVWR:** 16,500 LBS. | **SLEEP CAPACITY:** 5-6

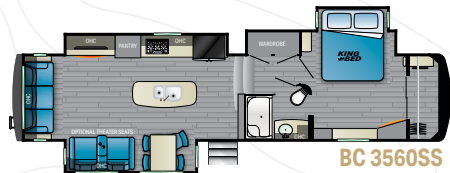


LENGTH: 43' 10" | **HEIGHT:** 13' 3" | **HITCH:** 2,970 LBS.
DRY: 14,296 LBS. | **GVWR:** 16,970 LBS. | **SLEEP CAPACITY:** 9+



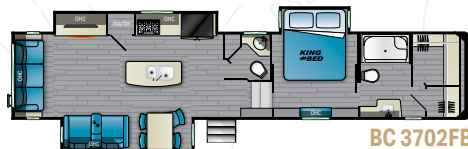
TOP 5 INTERIOR FEATURES

- 1 | **THE COUNTRY KITCHEN**
 - Stainless Steel Appliance Package: 21cu ft Residential Refer, 30" Microwave, 3.7cu ft Residential Oven
 - All Floorplans Built with Full-Size Pantry and Soft Close Cabinet Doors and Drawers
 - Designer Island Front with Built-In Single Basin Farm Style Sink, Roll-Up Sink Cover, And Residential Sprayer Faucet
- 2 | **COUNTRY CLIMATE CONTROL**
 - Dual Whisper Quiet A/C System Provides 30,000 BTUs of Cooling Power
 - Independent Thermostats Per A/C for Ease of Control
 - Laminated Main Deck and Upper Deck That Provides Better Insulation Factor and Construction Durability
- 3 | **NO CARPET ZONE**
 - High End Woven Flooring in All Dinette Slide outs
 - Easy to Maintain and Clean
 - Pet Friendly and Anti-Microbial
- 4 | **COUNTRY COMFORT MASTER SUITE**
 - King Bed Standard with Under Bed Storage
 - Every Floorplan equipped with Washer and Dryer Prep Closet
 - Built-In Fascia Nightstands with Easily Accessible Recepts
- 5 | **BIG COUNTRY HIGHLIGHTS**
 - Tri-Fold Sleeper Sofa and Power Theater Seating with Heat and Massage
 - Entertainment Center with 55" Big Screen TV and Built-In 40" Electric Fireplace
 - Super USB Charging Ports and Wireless Charging Stations Throughout



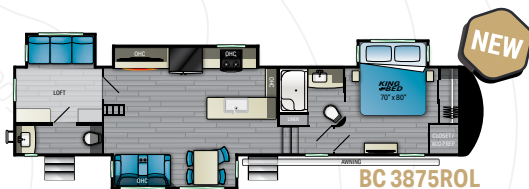
BC 3560SS

LENGTH: 39' 6-3/4" | HEIGHT: 13' 3" | HITCH: 2,821 LBS.
 DRY: 13,214 LBS. | GVWR: 16,000 LBS. | SLEEP CAPACITY: 3-4



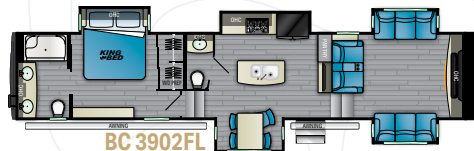
BC 3702FB

LENGTH: 43' 1" | HEIGHT: 13' 3" | HITCH: 2,930 LBS.
 DRY: 13,500 LBS. | GVWR: 16,250 LBS. | SLEEP CAPACITY: 3-4



BC 3875ROL

LENGTH: 41' 6" | HEIGHT: 13' 3" | HITCH: TBD LBS.
 DRY: TBD LBS. | GVWR: TBD LBS. | SLEEP CAPACITY: 9+



BC 3902FL

LENGTH: 43' 7" | HEIGHT: 13' 3" | HITCH: 3,657 LBS.
 DRY: 14,004 LBS. | GVWR: 16,500 LBS. | SLEEP CAPACITY: 5-6

BIG COUNTRY INDEPENDENCE PACKAGE

- Solid Stained Hardwood Interior Cabinets and Fascia
- Dinette Table w/ 4 Chairs (select models)
- Solid Surface Countertops w/ 3" Lip
- Drawers w/ Solid Wood Bottoms & Full Extension Drawer Guides
- Single Basin Farm Style Sink w/ Residential Syle Faucet
- Stainless Steel Gas Oven & 4 Burner Cooktop
- 30" Microwave
- 21 Cu Ft Stainless Steel Refrigerator
- 40" Electric Fireplace
- 30K BTU Whisper Quiet A/C System
- 12 Gal DSI 110/12V Water Heater
- Fantastic Fan w/ Rain Sensor
- Washer/Dryer Prep
- One Piece Fiberglass Shower
- Cold Crack Resistant Floor
- LED TV
- Tri-Fold Sleeper Sofa
- Power Theater Style Seats w/ Heat, Massage, and Cell Phone Charging Pad
- Night Roller Shades
- LED Interior Lighting
- King Bed

BIG COUNTRY ELITE PACKAGE

- High Gloss Slidewalls
- Painted Fiberglass Front Cap
- Aluminum Framed & Laminated Floors/Sidewalls
- Frameless Bonded Windows
- G-Rated Tires
- EZ Lube Axles
- Nev-R-Adjust Brake Pkg
- Heavy Duty Suspension w/ Leaf Springs and Wet Bolt Kit
- 6-Pt Hydraulic Level-Up
- Hydraulic Slide Selector Switches
- 50 Amp Service
- Battery Disconnect
- Universal Docking Station w/ Black Tank Flush & Exterior Shower
- Fresh Water Filter System
- Heated & Enclosed Underbelly
- Drop Frame w/ Store-More Super Storage
- Slam Baggage Style Doors
- LED Stop/Turn/Tail Lights
- Pre Wire for Wingard Trav'ler Satellite System
- Spare Tire & Carrier
- Back-Up Camera Prep
- Solar Prep
- Solid Entrance Step Above
- Winegard Air 360+
- 2" Accessory Receiver Hitch

SPECIAL FEATURES

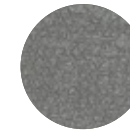


Under the Bed Storage

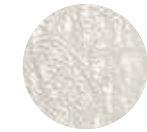


Store-More Storage

INTERIOR FABRIC DECOR OPTIONS

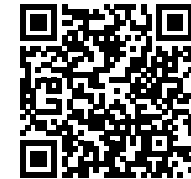


Shadow Stone



Country Creek

VISIT US ONLINE



For more information and to take a virtual walk-through, visit www.heartlandrvs.com

Your authorized Heartland dealer:

