

LUXURY SERIES

TRAVEL TRAILERS
OF EXTRAORDINARY
STYLE AND
LUXURY

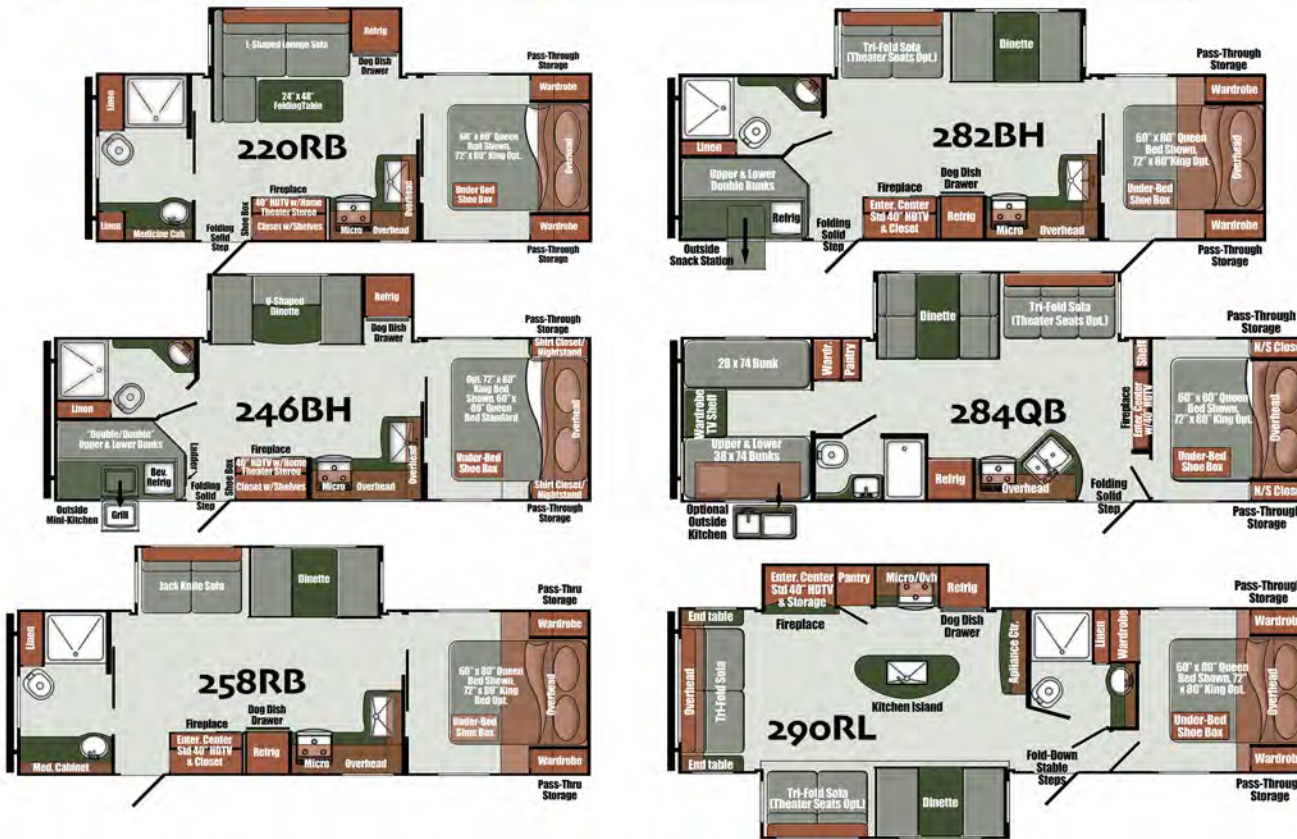


SPECIFICATIONS

Specifications are approximate and subject to change. Check the weight sticker in your unit for actual weights.

	220RB	246BH	258RB	282BH	284QB	290RL
Length	27'11"	30'4"	31'5"	32'0"	34'9"	34'4"
Width	96"	96"	96"	96"	96"	96"
Ext. Height	11'0"	11'0"	11'0"	11'0"	11'0"	11'6"
Int. Height	80"	80"	80"	80"	80"	80"
Dry Weight	5,685	5,903	5,957	6,251	6,737	7,117
Hitch Weight	620	610	740	780	980	920
Net Carry Cap.	1,935	1,707	2,042	1,657	1,262	2,603
Fresh Water	45	45	45	45	45	45
Grey Tank	72	72	72	72	35	35
Black Tank	35	35	35	35	35	35
Furnace	35,000	35,000	35,000	35,000	35,000	35,000
Water Htr.	Tankless	Tankless	Tankless	Tankless	Tankless	Tankless
LP Tank	2 X 20	2 X 20	2 X 20	2 X 20	2 X 20	2 X 20

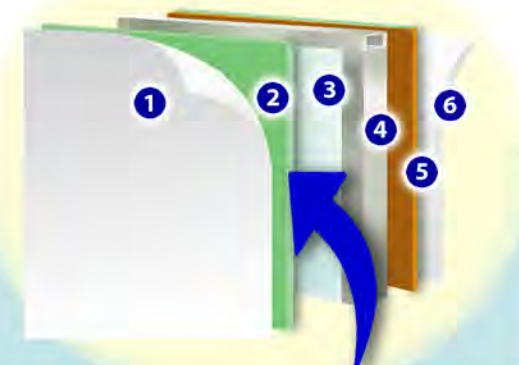
LUXURY SERIES FLOOR PLANS



Scan the QR code for floor plans, specifications, images, and videos.

BUILD TECH LAMINATED SIDEWALLS

Using processes perfected through years of innovation, our laminated sidewalls combine a light yet resilient welded square-tube aluminum frame and exterior fiberglass with structural, insulating, and decorative layers using advanced heat-resistant adhesives in a vacuum chamber where the layers are bonded into a remarkably light, incredibly strong unit.



THE AZDEL ADVANTAGE

Key to LUXURY SERIES vacuum-bonded sidewalls is a structural layer of AZDEL synthetic composite. AZDEL can't absorb moisture, so it won't rot or mildew, and can't delaminate. It insulates against extremes of temperature and noise, contains no formaldehyde, and weighs half as much as the wood it replaces.

- 1 Glazing exterior fiberglass
- 2 AZDEL synthetic composite
- 3 Rigid closed-cell foam insulation
- 4 Welded square-tube aluminum skeleton frame
- 5 Structural plywood inner wall
- 6 Decorative easy-care vinyl wallcovering

LUXURY SERIES

STANDARD FEATURES

Interior

- 'Shrine' Interior w/Muslin Oka Ceiling, Alium Silk Wall Vinyl
- 'Waterville' Wood Finish
- 'Summit Meadow Beige' Vinyl Flooring
- Cabinetry w/Solid Wood Stiles & Cabinet Doors
- Designer Window Treatments

Heating, Cooling, Electrical

- Pre-wired for Roof Air Conditioner
- Cool, efficient Interior LED Lighting
- LED Motion Sensor Lighting in Pass-Through
- Central Command Switch Panel w/Monitor
- Multiple USB Charging Ports
- LED Motion Sensor Entry Light
- Tech-Ready Features:
 - Wi-Fi Ready
 - Cable and Satellite Connections
 - Solar Panel Ready
 - Back-Up Camera Prep
- Dump Valve Light

Power

- 35-Amp Converter w/Charger & LED Indicators
- 30 ft. Detachable 30 Amp Power Cord w/Storage

Safety

- Safety Chains
- Break-Away Switch
- Wall Mount Fire Extinguisher
- Combo LP and CO Detector
- Smoke Detector
- Exterior LP Gas Hookup

Bath

- Foot Flush Toilet
- Vortex Bath Fan
- Medicine Cabinet with Mirror
- 30" x 36" Walk-In Shower w/Door & Surround (220RB, 246BH, 258RB, 282BH, 290RL)
- 24" x 26" Bathtub with Surround and Tub/Shower Doors (284QB)
- Skylight in Bath

Appliances

- Stainless Steel 3-Burner Range w/Oven & Glass Cover
- Stainless Steel Microwave Oven
- Stainless Steel Power Range Hood w/Light
- 12V 10.7 cu. ft. Everchill Refrigerator/Freezer

Windows and Doors

- Friction Hinge Entry Door(s)
- Black Radius Tinted Windows
- Radius Compartment Doors with Magnetic Latches

Furnishings

- Designer Window Treatments
- Booth Dinette (258RB, 282BH, 284QB, 290RL)
- U-Shaped Dinette (246BH)
- Tri-Fold Sofa (258RB, 282BH, 284QB, 290RL)
- L-Shaped Lounge w/Folding Table (220RB)
- Bunk Beds w/Poly Mattresses
 - 46" x 73" in 246BH, 282BH
 - 28" x 74" & 38" x 74" in 284QB
- Kid's Dinette/Game Table (284QB)
- 60" x 80" Queen Bed
- Designer Bedspread
- Under-Bed Shoe Storage

Exterior

- One-Piece Rubber Roof
- Fiberglass Exterior Sidewalls w/Azdel Substrate
- Easy-Lube Axles
- (2) 20 lb. LP Bottles w/Cover
- Gutter Rail & Rain Spouts at Roofline
- Radial Tires w/Aluminum Rims
- Outside Convenience/Snack Center (246BH, 282BH, 284QB)

POPULAR OPTIONS

- Free-Standing Table with 4 Chairs
- 2nd Air Conditioner (15,000 BTU)
- 50 Amp Service (required for 2nd A/C)
- Theater Seating in place of Tri-Fold Sofa
- 7 cu. ft. Gas/Electric Refrigerator in place of 12V Everchill
- Painted Front Cap

EMPEROR OPTION

- 72" x 80" King Size Bed for Master Bedroom



INCLUDED LUXURY ITEMS

Luxury Power Package (Incl., req.)

- Power Tongue Jack
- Power Awning w/LED Lighting
- Electric Stabilizer Jacks
- Heated/Enclosed Underbelly w/Heat Duct
- Thermofoil Wrapped Radius Roof & Flooring
- 35,000 BTU Furnace
- 15,000 BTU Ducted Air Conditioning
- 30 Amp Detachable Power Cord
- Marine Grade Exterior LED Speakers
- Electric Fireplace/Heater
- Blue Tooth Stereo System w/Sound Bar
- 100W Solar Panel w/30 Amp Controller
- LED Exterior Clearance & Tail Lights
- 40" LED TV w/Interior & Exterior Mounting Brackets (Ext. N/A 290RL)

Worry-Free Camping Package (Incl.)

- Fold-Away Solid Safety-Step
- Fold-Away Safety Grab Handle
- Walk-On Roof w/Ladder
- Exterior Docking Station in Front Storage
- Spare Tire with Carrier
- Fiberglass Front Cap w/LED Lights
- Front Diamond Plate Rock Guard
- Slam-Latch Cargo Doors; Magnetic Catches
- Black Tank Flush
- Tankless Water Heater
- LG Industrial Stainless Steel Kitchen Sink w/Pull-Down Faucet & Cover
- Stainless Steel Appliances
- Easy-Clean Seamless Countertops
- Solid Surface Galley Kitchen Countertop
- Backsplash behind Range



THE LUXURY SERIES 3-YEAR WARRANTY

Our exclusive 3-year Limited Warranty gives you peace of mind by covering key structural components (floor, roof, side, front, and rear walls) of your new LUXURY SERIES travel trailer. In addition, suppliers of other key components also provide enhanced coverage to Gulf Stream Coach customers.

Check the full written warranty for complete information.

For more information visit www.gulfstreamcoach.com or see your Gulf Stream Coach Dealer. Components, features, specifications, and materials are subject to change without further notice. Photos may show optional features. Not responsible for typographical errors.
© 2023 Gulf Stream Coach, Inc., Nappanee, IN, USA • LUX112023

Your Gulf Stream Coach Dealer:

QUALITY • VALUE • INNOVATION

505 S Oakland Avenue • Nappanee, IN • 46550
www.gulfstreamcoach.com



SIGNATURE SERIES

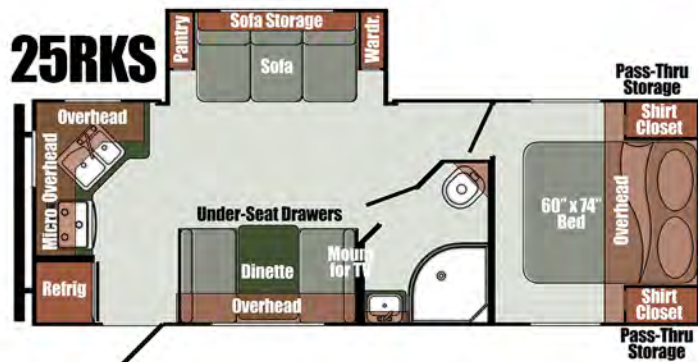
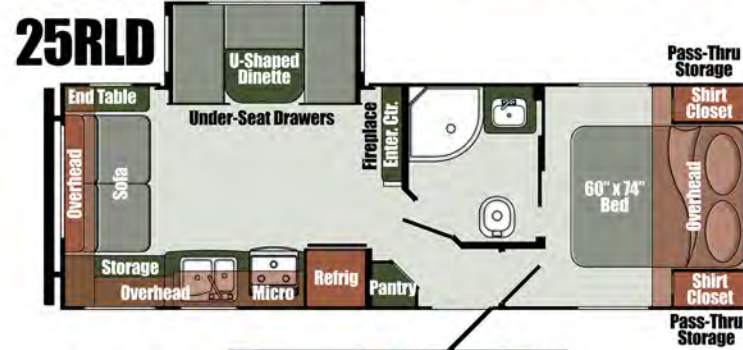
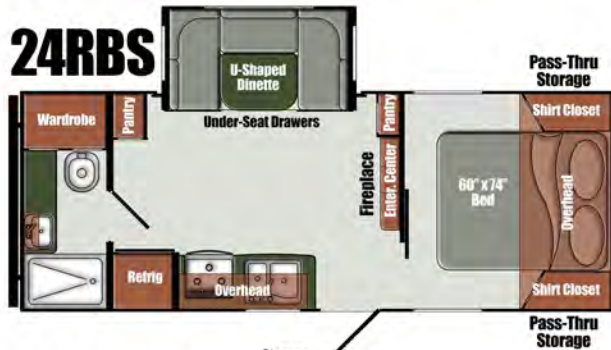
LAMINATED TRAVEL TRAILERS



THE
SIGNATURE
SERIES
3-YEAR
WARRANTY

Our exclusive 3-year Limited Warranty gives you peace of mind by covering key structural components (floor, roof, side, front, and rear walls) of your new SIGNATURE SERIES travel trailer. In addition, suppliers of other key components provide enhanced coverage to

Gulf Stream Coach customers. Check the full written warranty for complete information.



Specifications

	Length	Width	Ext. Hgt	Int. Hgt	Dry Wgt.	Hitch Wgt.	Carry Cap.	Fresh Water	Grey Tank	Black Tank	Furnace	Water Htr.	LP Tank
Weights include typical options, and are approximate. Check the sticker in each unit for actual weights.	24RBS	24'8"	96"	11'3"	80"	4,700	530	2,340	29	29	29	25,000	Tankless 2 x 20
	25BHS	27'2"	96"	11'0"	80"	5,040	540	2,000	29	29	29	25,000	Tankless 2 x 20
	25RKS	27'4"	96"	11'1"	80"	TBD	TBD	TBD	29	58	29	25,000	Tankless 2 x 20
	25RLD	28'0"	96"	11'0"	80"	4,911	590	2,639	29	29	29	25,000	Tankless 2 x 20
	28CRB	30'3"	96"	10'11"	80"	6,120	520	1,400	29	29	29	35,000	Tankless 2 x 20
	28BBS	31'2"	96"	11'0"	80"	5,820	640	1,220	29	29	29	35,000	Tankless 2 x 20



SIGNATURE SERIES

STANDARD FEATURES

Interior Decor

- "Muslin Oka" Ceiling Panels
- "Allium Silk" Easy-Care Wall Vinyl
- Solid Wood Cabinet Stiles
- Wood Cabinet Doors
- Countertops with continuous-edge Moulding
- "Summit Meadow Beige" Vinyl Flooring
- Designer Window Treatment
- Soft-Pleated Night Shades
- Decorative Dinette Light

Heating & Cooling

- Pre-wired for Roof Air Conditioner
- Gas Furnace w/Wall Thermostat
25,000 BTU in 24RBS, 25BHS, 25RLD
35,000 BTU in 28BBS, 28CRB

Safety

- Break-Away Switch & Safety Chains
- Wall-Mount Fire Extinguisher
- Combo LP & CO Detector
- Smoke Detector

Electrical

- Tech-Ready Features:
 - Wi-Fi Ready
 - Cable & Satellite Connections
 - Solar Panel Ready
 - Back-up Camera Prep
- LED Light w/Switch in Pass-Through
- Convenience Switch Monitor Panel
- TV Antenna w/Power Booster
- 30 ft. Detachable 30 Amp Power Cord w/Storage
- 35 Amp Converter w/Charger & LED Indicators

Furnishings

- Booth Dinette (25RKS, 28BBS, 28CRB)
- U-Dinette (24RBS, 25BHS, 25RLD)
- Comfort Series Jack Knife Sofa (25RKS, 25RLD, 28BBS, 28CRB)
- 60" x 74" Queen Bed w/Poly Mattress
- Upper & Lower Bunk Beds (42" x 74" in 25BHS, 54" x 73" in 28BBS)

Bath

- Foot Flush Toilet
- Power Bath Vent
- Medicine Cabinet w/Mirror
- Shower Curtain
- 24" x 36" Tub/Shower w/Surround (24RBS)
- 24" x 36" Tub w/Surround (25BHS, 28BBS)
- 32" Radius Shower (25RKS, 25RLD, 28CRB)
- Skylight in Bath

Kitchen Appliances

- Power Range Hood w/Light
- 10.7 cu. ft. 12V Refrigerator/Freezer
- Outside Kitchen (28CRB)

Windows & Doors

- Friction Hinge Entry Door
- Black Radius Tinted Safety Windows
- Radius Slam-Latch Compartment Doors w/Magnetic Catches

Exterior

- One-Piece Rubber Roof
- Fiberglass Exterior Sidewalls w/Azdel Substrate
- Easy Lube Axles
- (2) 20 lb. LP Bottles w/Cover
- Radius Metal & Fender Skirts
- 14" Radial Tires, Modular Rims
- (4) Manual Stabilizer Jacks

SIGNATURE PACKAGE

(Included, Required)

- Electric Awning w/LED Light Strip
- Power Tongue Jack
- 14" Spare Tire w/Carrier
- Solid Safety Step at Entry Door
- Fold Away Grab Handle
- Outside Spray Port
- Black Tank Flush
- 15,000 BTU Ducted Roof Air Conditioning
- 3 Burner Range w/Oven w/Glass Cover
- Microwave Oven
- Electric Fireplace/Heater (N/A 25RKS)
- Home Theater Stereo w/Bluetooth & Speakers
- Tankless Water Heater
- Premium Foam Mattress
- 100 Watt Solar Panel w/30 Amp Controller
- Interior & Exterior TV Mounting Brackets
- Shower Surround
- 60/40 Sink Cover

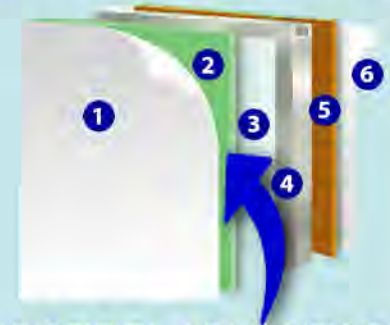
POPULAR OPTIONS

- Rear Bumper Mount Gas Grill
- Electric Stabilizer Jacks
- 40" HDMI LED TV
- Glass Shower Door (25RKS, 25RLD, 28CRB)
- 7 cu. ft. Gas/Electric Refrigerator in place of 12V Refer
- Enclosed Underbelly
- (4) 14" Aluminum Wheels w/Radial Tires in place of Modular Wheels
- Theater Seating in place of Sofa (28CRB Only)

SIGNATURE SERIES Build Tech

Using processes perfected through years of innovation, our laminated sidewalls combine a light yet resilient welded square-tube aluminum frame and exterior fiberglass with structural, insulating, and decorative layers using advanced heat-resistant adhesives in a vacuum chamber where the layers are bonded into a remarkably light, incredibly strong unit.

- 1 Gleaming exterior fiberglass
- 2 AZDEL synthetic composite
- 3 Rigid closed-cell foam insulation
- 4 Welded square-tube aluminum frame
- 5 Structural plywood inner wall
- 6 Decorative easy-care vinyl wallcovering



THE AZDEL ADVANTAGE

Key to SIGNATURE SERIES vacuum-bonded sidewalls is a structural layer of AZDEL synthetic composite. AZDEL can't absorb moisture, so it won't rot or mildew, and can't delaminate. It insulates against extremes of temperature and noise, contains no formaldehyde, and weighs half as much as the wood it replaces.

Specifications, standards, features, and options are subject to change without further notice. For more information, visit your local Gulf Stream Coach Dealer or www.gulfstreamcoach.com.

© 2023 Gulf Stream Coach, Inc. Nappanee, IN USA #SIG122023



SCAN THE QR CODE
FOR SPECS, FLOOR
PLANS, PICTURES,
& VIDEO



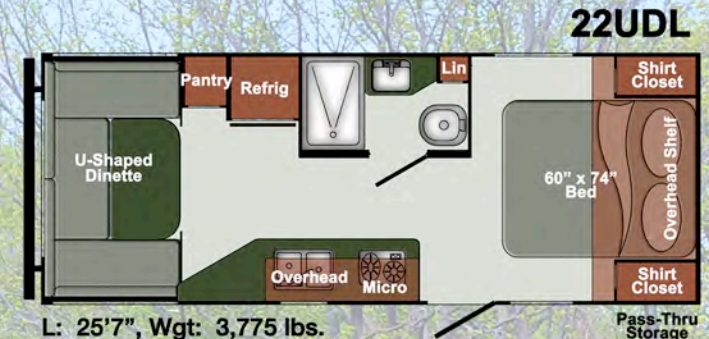
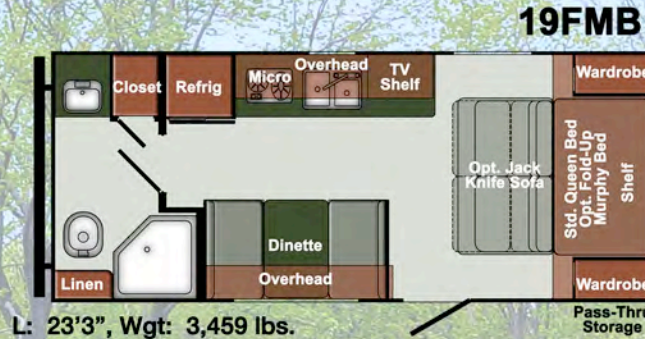
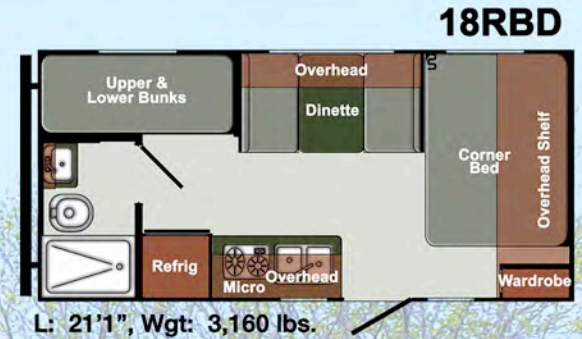
QUALITY • VALUE • INNOVATION
505 S Oakland Avenue • Nappanee, IN • 46550
www.gulfstreamcoach.com

Your Gulf Stream Coach Dealer

SVT SPECIAL VALUE SERIES

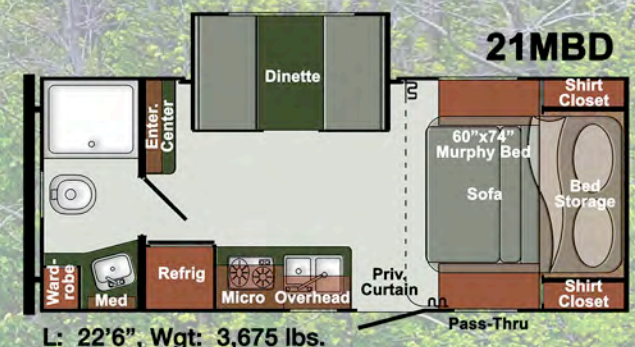
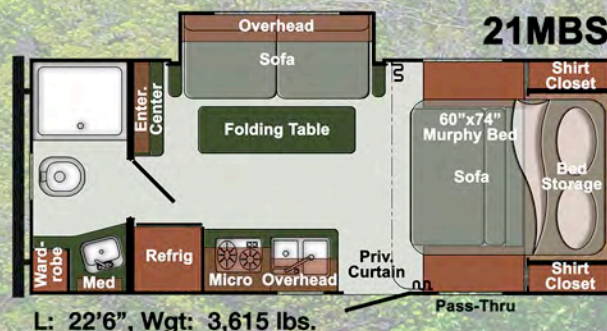
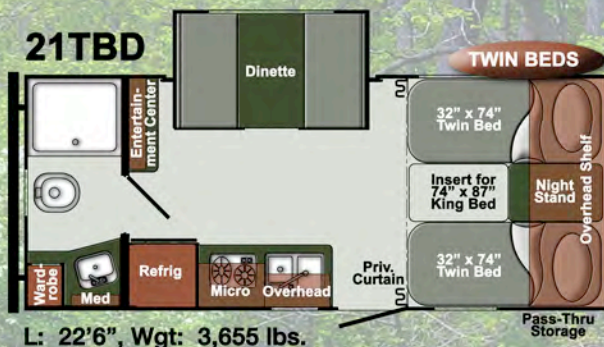
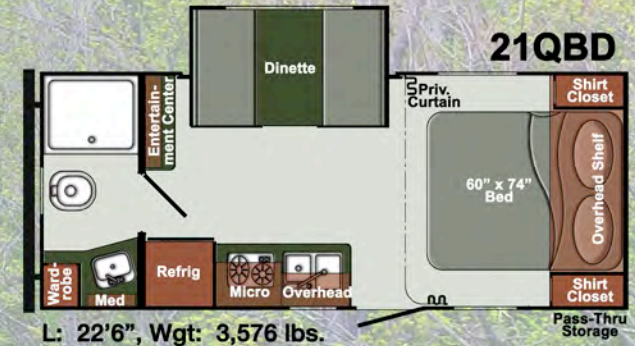
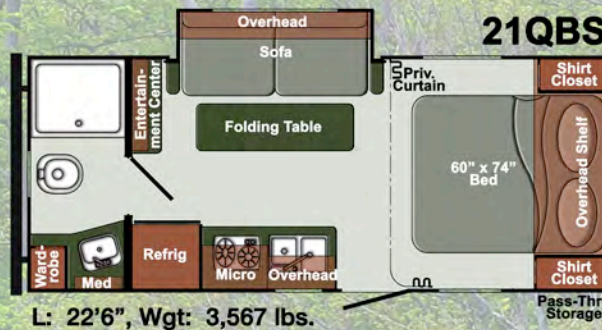
LIGHT WEIGHT LAMINATED TRAILERS

- Laminated construction with Azdel synthetic composite substrate
- Lightweight welded aluminum frames
- Fully equipped under 4,000 lbs.
- Full 8' wide for more living space
- Well-equipped
- Perfect for downsizers & new RVers
- Flexible, proven, much-loved floor plans



SVT90 90" WIDE, DOUBLE AXLES

- Laminated construction w/Azdel synthetic composite substrate
- Tons of storage, lots of windows
- Fully equipped under 3,850 lbs.
- 2,800 lb. double axles
- Pass-through storage
- Handy galley kitchen w/big double-bowl sink
- Roomy bath, HUGE shower
- Everything a camping couple needs



SVT SPECIAL VALUE SERIES

SVT STANDARD FEATURES

DECOR

- Designer Window Treatment
- Mini-Blinds throughout
- Easy-Care Vinyl Flooring
- Solid Wood Cabinet Stiles; Wood Cabinet Doors
- "Calcutta" Laminated Countertops
- "Allium Silk" Easy-Care Wall Vinyl
- "Muslin Oka" Ceiling Panel

HEATING & COOLING

- Prewired for Roof A/C
- 19,000 BTU Gas Furnace (25,000 BTU in 22UDL)

SAFETY, MISCELLANEOUS

- Fold-Away Safety Grab Handle
- Breakaway Switch
- Safety Chains
- Wall-Mount Fire Extinguisher
- Combo LP & CO Detector
- Smoke Detector

EXTERIOR

- One-Piece Rubber Roof
- Fiberglass Exterior Sidewalls Exterior Walls w/Azdel Substrate
- (4) Manual Stabilizer Jacks
- 14" Radial Tires w/Modular Rims (18RBD, 22UDL, all SVT90s,
- 15" Radial Tires (19FMB)
- 2 x 20 lb. LP Tanks

FURNISHINGS

- Booth Dinette (18RBD, 19FMB, 21MBD, 21QBD, 21TBD)
- U-Shaped Dinette (22UDL)
- 60" x 74" Bed w/Poly Mattress (19FMB, 22UDL, 21QBS, 21QBD)
- 54" x 74" Bed w/Mattress (18RBD)
- Murphy Bed (21MBS, 21MBD)
- Twin Beds (21TBD)
- 24" x 74" Bunk Beds w/Poly Bunk Mattresses (18RBD)
- Comfort Series Jack Knife Sofa (21QBS, 21MBS)

APPLIANCES

- Power Range Hood w/Light
- 8.0 cu. ft. 12V Refrigerator

ELECTRICAL

- TV Antenna w/Power Booster
- Convenience Switch Panel w/Tank Monitor
- 30 Amp 35' Power Cord w/Storage
- 35 Amp Converter w/Charger & LED Indicators

BATH

- Foot Flush Toilet
- Power Bath Vent
- Medicine Cabinet w/Mirror
- Shower Curtain
- 32" Radial Shower w/Surround (19FMB) or 24" x 36" Bath Tub with Tub Surround (18RBD, 22UDL)
- 30" x 36" Walk-In Shower with Shower Surround (all SVT90s)
- Skylight in Bath

WINDOWS & DOORS

- 26" x 70" Radius Entry Door w/Deadbolt Lock & Friction Hinge
- Black Radius Tinted Safety Windows
- Deluxe Slam-Latch Luggage Doors w/Magnetic Catches

SVT PACKAGE *(included, required)*

- Electric Awning w/LED Lights
- Power Tongue Jack
- Spare Tire w/Carrier
- Solid Safety Step
- Fold-Away Grab Handle at Entry Door
- Outside Spray Port
- Black Tank Flush
- Tankless Water Heater
- 15,000 BTU Roof Air Conditioner
- Microwave Oven
- 3-Burner Range with Oven
- Home Theater Stereo w/Blue Tooth & Speakers inside and out
- 8 cu. ft. 12V Refrigerator
- 100 Watt Solar Panel w/30 Amp Controller
- Interior & Exterior TV Mounting Brackets
- Premium Foam Mattress
- Soft Shower Door (N/A 19FMB)
- Night Shades
- Sink Cover



Scan this code for specs, floor plans, photos and videos



POPULAR BUILD OPTIONS

- Rear Bumper Mount Gas Grill
- 7 cu. ft. Gas/Electric Refrigerator in place of 12V Refrig
- Glass Shower Door (19FBM)
- Murphy Bed (19FBM)
- 14" Aluminum Wheels in place of Modular Wheels (18RBD, 22UDL, all SVT90s)
- 15" Aluminum Wheels in place of Modular Wheels (19FMB)

Materials, specifications, standard features, & options are subject to change. Contact your dealer or visit www.gulfstreamcoach.com for more information. #SVT122023

SPECIFICATIONS

Model	18RBD	19FMB	22UDL	21MBS	21MBD	21QBS	21QBD	21TBD
Length	21'1"	23'3"	25'5"	22'6"	22'6"	22'6"	22'6"	22'6"
Width	96"	96"	96"	90"	90"	90"	90"	90"
Ext. Height	10'4"	10'6"	10'6"	10'6"	10'6"	10'6"	10'6"	10'6"
Int. Height	80"	80"	80"	80"	80"	80"	80"	80"
Base Weight	3,160	3,459	3,775	3,615	3,675	3,567	3,576	3,655
Hitch Weight	320	370	420	460	460	440	420	460
Net Carry Cap.	740	1,311	3,665	2,445	2,385	2,473	2,444	2,405
Fresh Water	23	48	48	48	48	48	48	48
Grey Tank	33	33	33	33	33	33	33	33
Black Tank	33	33	33	33	33	33	33	33
Furnace	19,000	19,000	25,000	19,000	19,000	19,000	19,000	19,000
Water Heater	Tankless	Tankless	Tankless	Tankless	Tankless	Tankless	Tankless	Tankless
LP Tank	2 x 20	2 x 20	2 x 20	2 x 20	2 x 20	2 x 20	2 x 20	2 x 20

Your Gulf Stream Coach Dealer



QUALITY • VALUE • INNOVATION

www.gulfstreamcoach.com

503 South Oakland Avenue, Nappanee IN 46550