



Jay Flight SLX



Serial #: 1UJBC0BS3T16R0095
Model: 287BHS JAY FLIGHT SLX TT

Model Year: 2026 Dealer Name: BOURBON RV CENTER, INC
133 OLD SPRINGFIELD ROAD
BOURBON, MO 65441
USA

Standard Equipment

THE FOLLOWING ITEMS ARE STANDARD ON THIS MODEL

STANDARD EXTERIOR EQUIPMENT

- 30-amp service
- 8,000 BTU wall mount A/C (single axle models)
- 13,500 BTU Roof A/C (double axle models)
- Axles with electric, self-adjusting brakes and easy-lube hubs
- Exterior cable TV hookup
- Fully-integrated A-frame
- Galvanized-steel, impact resistant wheel wells
- Large exterior downspouts
- LP quick connect (outside grill prep) [N/A on Sport Edition]
- Magnum Truss™ Roof System
- Nitrogen filled radial tires
- PVC roofing membrane (limited lifetime warranty)

CUSTOMER VALUE PACKAGE (MANDATORY)

- 8 cu. ft. 12V refrigerator
- Backup camera prep
- Bathroom skylight
- Bathroom vent
- Detachable power cord
- Entry door with window and shade prep
- Fitted bed sheet
- G20 dark tinted privacy windows
- Keyed-Alike™ entry and baggage doors
- Large folding entry door grab handle
- LED interior and exterior light
- Marine grade exterior stereo speakers
- Microwave oven
- On-demand tankless water heater
- Power awning with LED lights
- Range hood
- MoRyde Step Above® entry steps
- Spare tire with cover
- Stabilizer jacks
- Tub/shower surround
- Window shades

STANDARD INTERIOR EQUIPMENT

- 300 lb. rated single bunk beds
- 600 lb. rated double bunk beds
- Digital TV antenna
- Heavy-duty, 75 lb., full-extension, steel ball-bearing drawer guides
- High rise kitchen faucet
- Marine-grade toilet with foot flush
- Plywood bed platforms
- Queen mattress
- Residential-style hidden cabinet door hinges
- Residential-style kitchen countertops
- Shower curtain with curved shower track (select models)
- Solid hardwood cabinet doors with screwed stile construction and hidden hinges
- Vinyl flooring throughout

Optional Equipment

OPTIONAL EQUIPMENT INSTALLED ON THIS VEHICLE BY MANUFACTURER

| | |
|----------------------------|-----------|
| Base price | 36,593.00 |
| USA STANDARDS | n/c |
| CUSTOMER VALUE PACKAGE | 5,250.00 |
| ELITE PACKAGE | 1,493.00 |
| 15,000 BTU ROOF MOUNTED AC | 300.00 |
| 2ND AC | 893.00 |
| 50 AMP SERVICE | 443.00 |
| JACK KNIFE SOFA | n/c |

BRV's
Discount Price
\$35,977

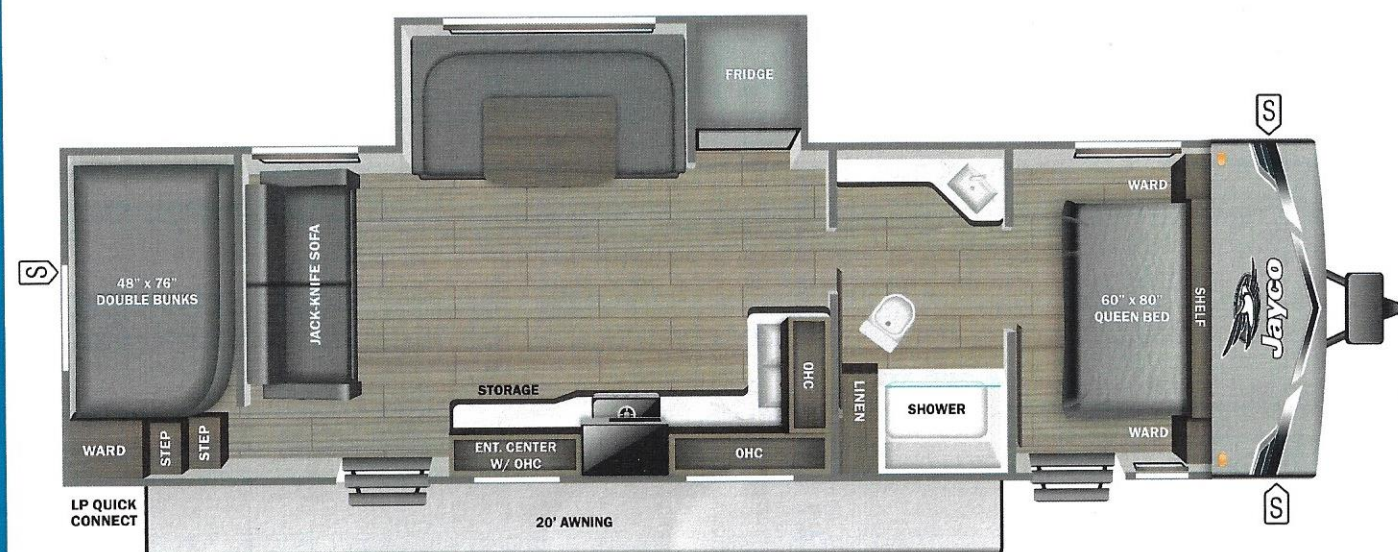
UNIT TOTAL 44,972.00

DEALER INSTALLED OPTIONS

J1123

Manufacturer's Suggested Retail Price \$44,972.00

TOTAL AMOUNT DOES NOT INCLUDE STATE AND LOCAL TAXES OR LICENSE FEES. THE PRICE SHOWN ABOVE MAY OR MAY NOT BE REPRESENTATIVE OF THE ACTUAL SELLING PRICE OF SIMILAR RECREATIONAL VEHICLES IN YOUR AREA.



UVW
6836 lbs



Sleeps



Length
34' 3.75"

DIMENSIONS

Exterior height:.....132.88"

Exterior width:.....96.00"

WEIGHTS

GVWR:.....7950

GAWR (front):.....3500

GAWR (rear):.....3500

Approx. Gross Cargo Carrying Capacity(GCCC):.....1114

TIRES

Tire size (front):.....ST205/75R14D

Tire size (mid):.....

Tire size (rear):.....ST205/75R14D

Tire size (spare):.....ST205/75R14D

CAPACITIES

Fresh water tank (gals.):...52.00

Gray water tank (gals.):...39.00

Black water/toilet tank (gals.):...39.00

Propane (lbs.):...40

Propane (gals.):...9

Water heater (gals.):...0.25

SEATING & SLEEPING

Some dimensions may be rounded and may vary from the actual dimensions

***Weights may be estimated calculations and may vary from the actual weight

- refer to the vehicle weight labels for actual weights***

Floorplans, features and specifications are subject to change without notice.

2+3
YEAR | YEAR
LIMITED | STRUCTURAL
WARRANTY