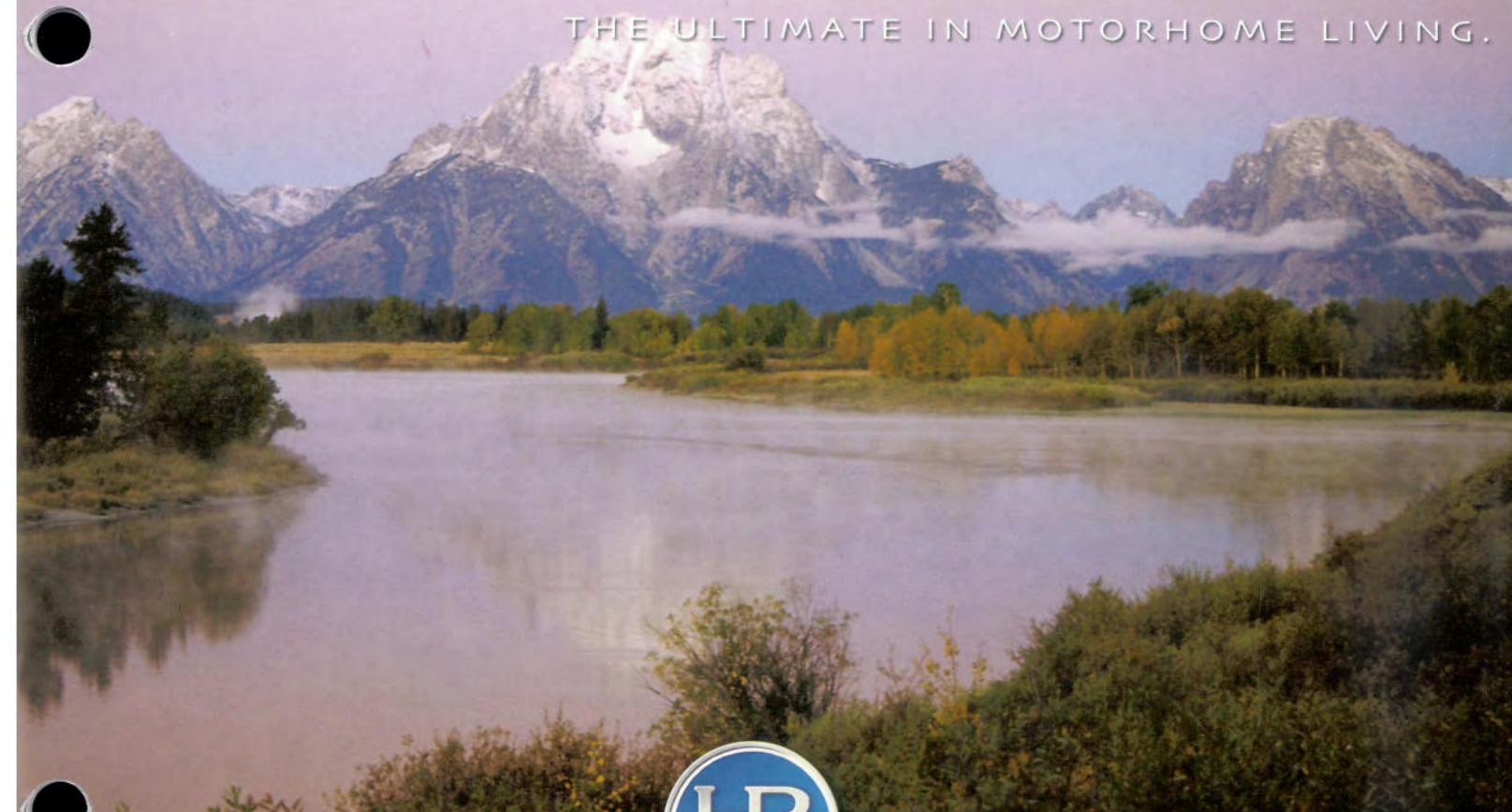


# NAVIGATOR<sup>®</sup>

THE ULTIMATE IN MOTORHOME LIVING.

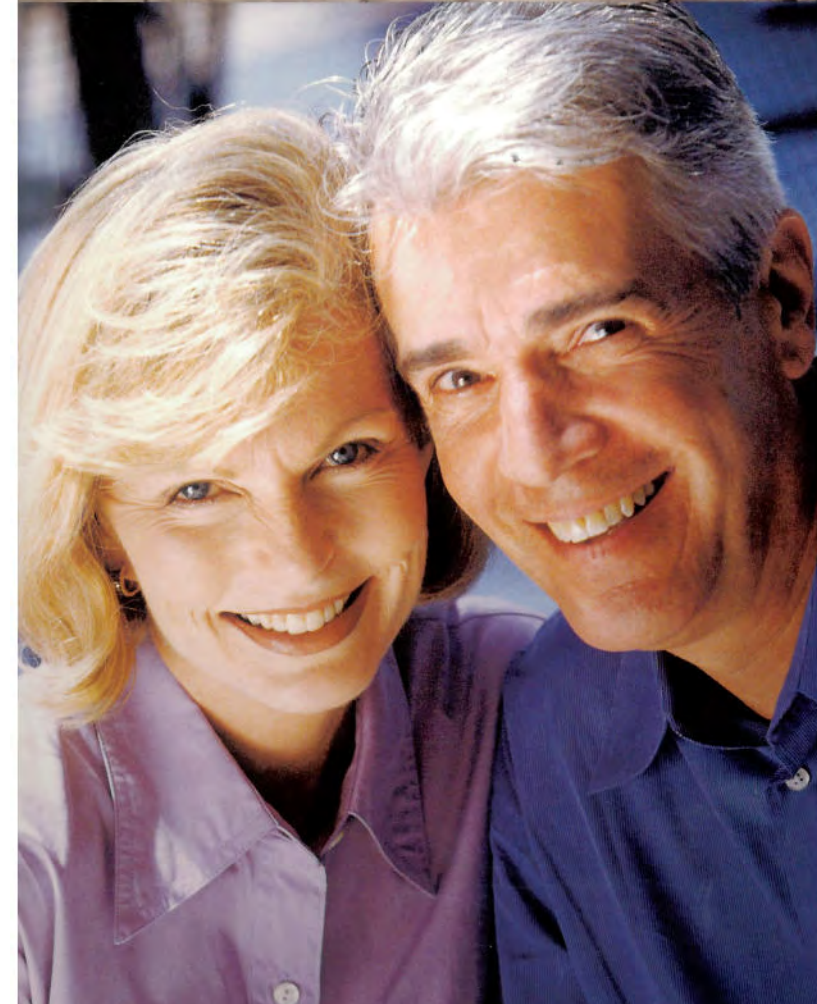


HOLIDAY RAMBLER

*This is Living.*





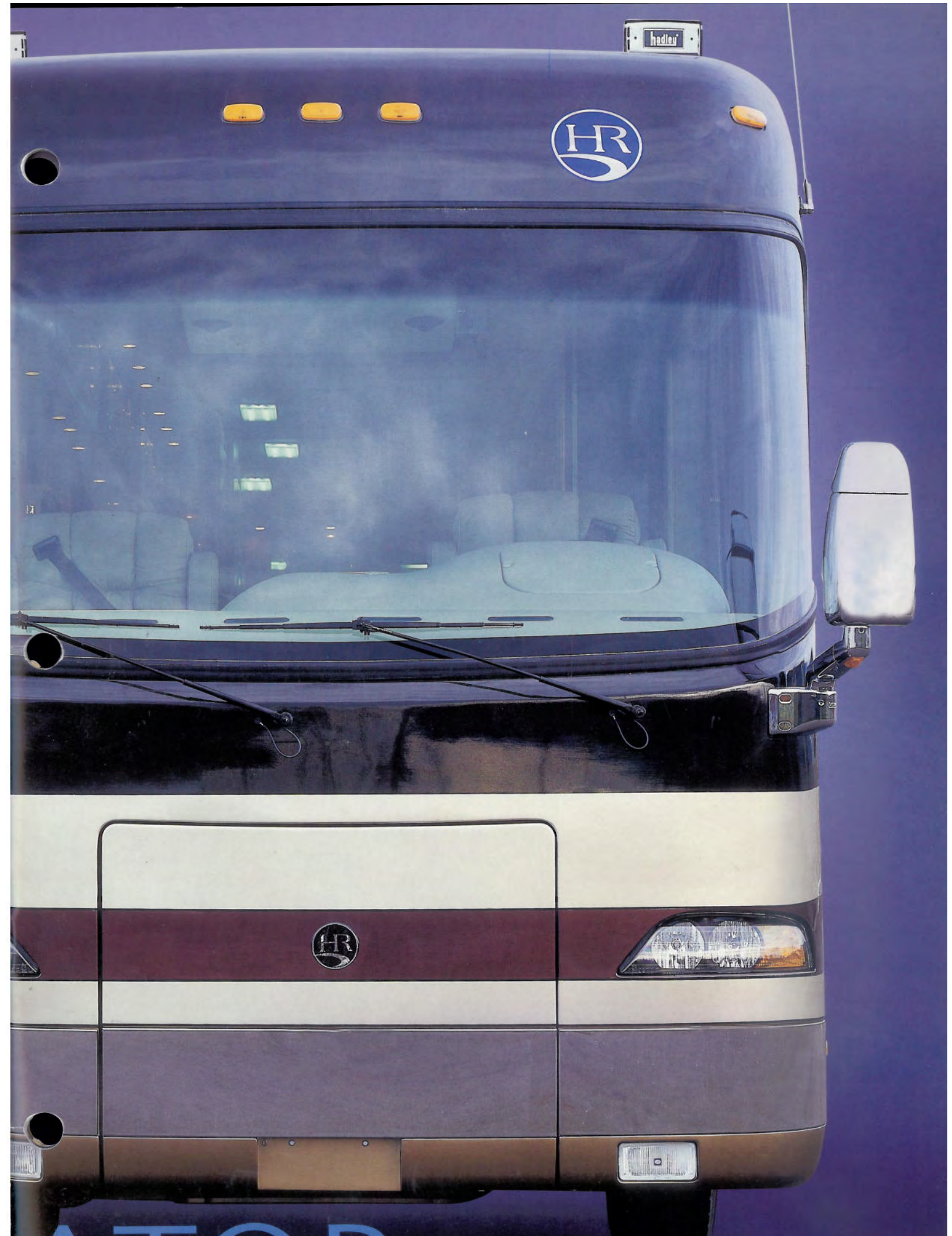


WITH ITS NEW ONE-PIECE  
WINDSHIELD AND FRONT  
FIBERGLASS CAP, ITS  
POLISHED STAINLESS STEEL  
BUMPER, TRIPLE HEAD  
MIRRORS AND BUS-STYLE  
LOOK, THE 2002  
NAVIGATOR IS A TRULY  
HANDSOME, THOROUGHLY  
UPSCALE COACH.



2002 NAVIGATOR







# IT'S LIKE NO OTHER MOTORHOME

You believe you're entitled to as much motorhome enjoyment on the road  
as in a campsite. Fortunately, Holiday Rambler® agrees.

**That's why we built Navigator® with the smoothest-riding, safest and  
most fun-to-handle chassis in the industry.**

It's the exclusive Roadmaster™ Semi-Monocoque chassis  
from Monaco Coach Corporation. Need to brake suddenly?

The coach comes to a stop without a nose dive.

Riding over rough pavement? It's as smooth as silk.

Motorhome adventures don't get any better than this.





R I D E .

HERE'S THE EPITOME OF MOTORHOME SOPHISTICATION. NOTE THE DELUXE BODY PAINT BEDECKING THE LAMINATED GEL COAT FIBERGLASS WALLS. THE FULL-WIDTH HOLIDAY RAMBLER MUD FLAP. POLISHED ALUMINUM WHEELS. AND THE HEAD-TURNING APPEAL FROM BUMPER TO BUMPER.





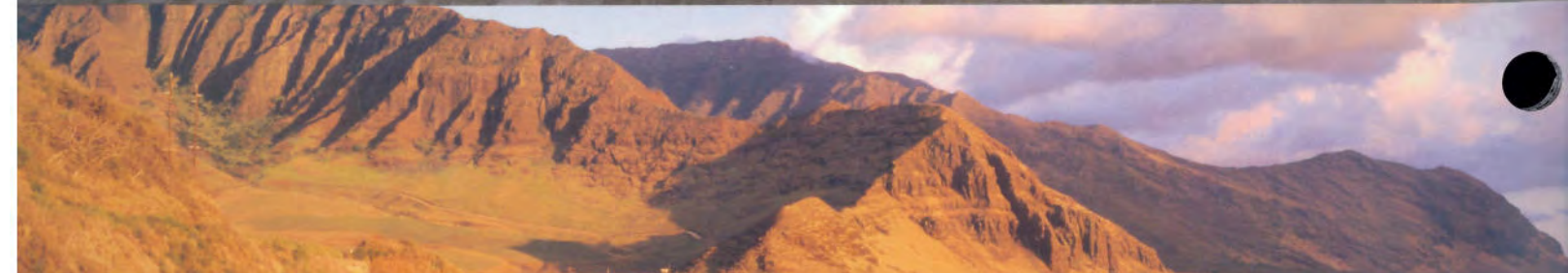
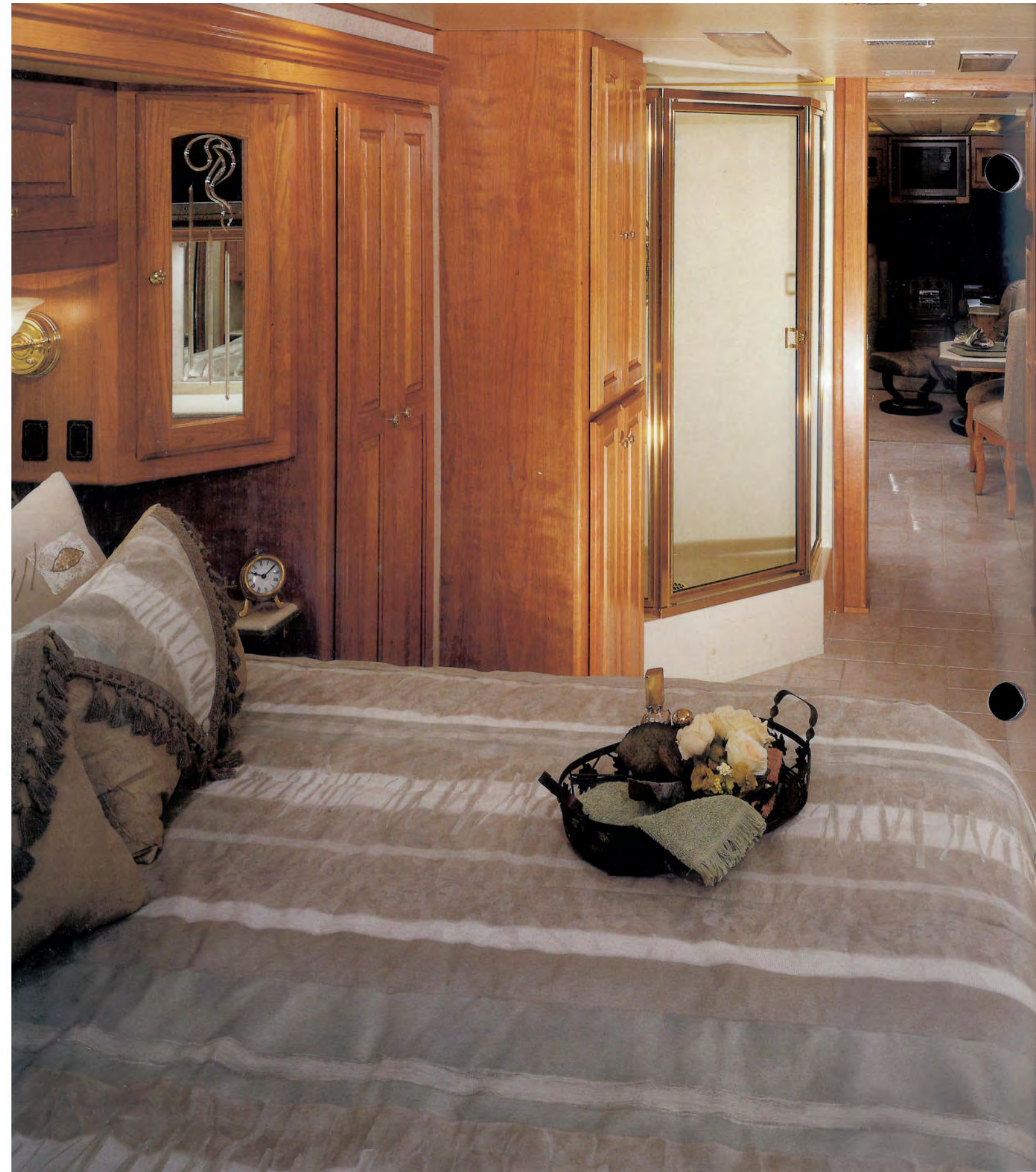






PRESTIGIOUS APPOINTMENTS ABOUND IN THIS MAGNIFICENT INTERIOR. LIKE THE SOLID WOOD NATURAL CHERRY CABINETS, PERFECTLY COMPLEMENTED BY ACCENT MOOD LIGHTING ON TOP AND TOE KICK MOOD LIGHTS DOWN BELOW. AND THE MAGNIFICENT MOONSTONE DECOR, SHOWN HERE. AS WELL AS METICULOUSLY UPHOLSTERED FURNITURE. BEVELED DECOR MIRRORS THAT OPEN UP THE INTERIOR SPACE. AND PADDED LAMBREQUINS AND PLEATED DAY/NIGHT SHADES FOR A TOUCH OF CLASS.









You're one of the motorhome aficionados for whom outdoor adventures and gracious living are one and the same. That's why you'll find Navigator<sup>®</sup> perfect for your lifestyle. **We appoint each coach with features you'd find in a luxury home.**

**Like premium entertainment equipment.**

Hardwood cabinets polished to perfection. (They're the best cabinet work to be found in motorhomes.) And a grand bedroom suite in some models. What's more, our space-expanding bedroom and kitchen-suite slide-outs give you even more space to enjoy it all.



THE DELUXE BEDROOM SUITE FEATURES A QUEEN SIZE BED WITHIN A BEDROOM SLIDE-OUT AND A 20-INCH FLAT SCREEN COLOR TV. (KING BED AVAILABLE ON SOME MODELS.)



NOTICE THE SPACIOUS MEDICINE CABINET AND SOLID SURFACE COUNTERTOPS IN THE ADJOINING BATHROOM. THE WARDROBE (RIGHT) HAS ADJUSTABLE SHELVES.



YOU WON'T FIND A BETTER RIDE.

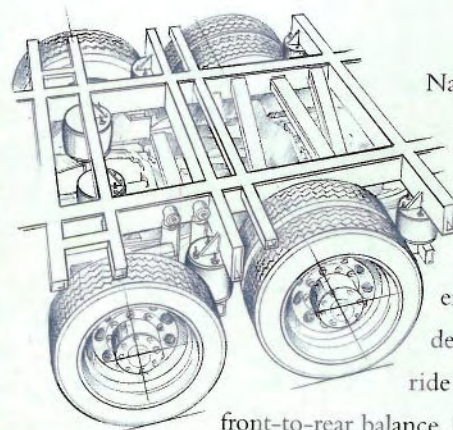
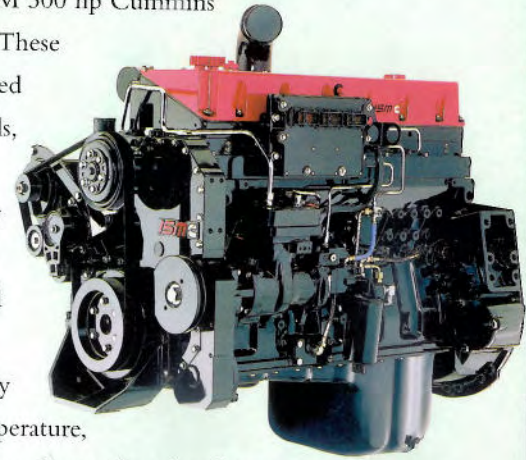
It stands to reason that **the ultimate motorhome from one of the most well-respected names in the industry** should have the best ride and handling possible in a motor coach. And that's exactly what you'll find in a Navigator<sup>®</sup>. This is because Navigator rides on Monaco Coach Corporation's exclusive Roadmaster Semi-Monocoque chassis, the most sophisticated, refined and finely balanced chassis in the industry.



RIGHT — TECHNOLOGY AND CREATURE COMFORTS ARE ARTFULLY INTEGRATED TO MAKE YOUR RIDE MORE COMFORTABLE, SAFE AND FUN. THE LIGHTED VIP SMARTWHEEL<sup>®</sup> WITH CONTROLS FOR WINDSHIELD WIPERS, ICC AND CRUISE CONTROL. LEATHER 6-WAY POWER PILOT AND CO-PILOT SEATS WITH INTEGRATED SEAT BELT. PLUS ADJUSTABLE ACCELERATOR AND BRAKE PEDALS.

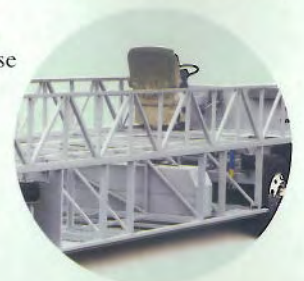


The 40 ft. Navigator is powered by a gutsy Cummins® ISL electronic engine producing 370 hp and 1200 lb.-ft. torque. Models 42 ft. and up feature a powerful ISM 500 hp Cummins with 1550 lb./ft. torque. These engines combine advanced electronic engine controls, high-pressure fuel injection and heavy-duty components to give you power, fuel economy and reliability. Cummins' Interact System constantly monitors changes in temperature, pressure and speed, and coordinates functions between the engine and motorhome systems to provide superior performance. A Jacobs brake is standard on all Navigators.



Navigator's Roadmaster Semi-Monocoque superstructure is a bridge-like, all-steel cage construction engineered to provide decreased roll, a smoother ride and superior front-to-rear balance. **DECREASED ROLL.**

Air bags and shock absorbers are placed in line with the wheels, much further apart than with any other chassis construction. This results in decreased roll, especially on sharp corners. **SMOOTHER RIDE.** The coach has 10 bags, each with its own Bilstein gas shock absorber. (Navigator has tag axles to improve the ride and spread the weight.) An air bag and shock absorber is placed in front of and behind each wheel, to isolate wheel response and absorb road trauma before it reaches the coach. **SUPERIOR BALANCE.** Monitored leveling sensors continuously adjust the air pressure at each axle to maintain a level ride. This prevents nose diving during hard braking, offsets weight transfer when cornering, eliminates wandering or floating on curves, and stabilizes the coach on uneven pavement.





The best thing next to having a super prestigious motorhome is being able to **customize it to your heart's content**. Choose from six elegant decor options, each with matching exterior graphics. Plus six wood finishes and numerous interior and exterior designer touches. Looking for added convenience? How about slide-out trays or a hydraulic leveling system. Want more peace of mind? Choose the GPS navigation system. You get the idea.

Navigator® gives you so many options, you can create a coach that's uniquely yours.



THE HANDY COMPUTER WORK STATION BY THE FRONT PASSENGER SEAT MAKES IT EASY TO SURF WHILE ON THE ROAD. THE ACCESSIBLE AC ELECTRICAL OUTLET, 12-VOLT OUTLET AND PHONE JACK KEEP YOU PLUGGED IN.

NATURAL OR STAINED OAK CABINETS ARE STANDARD. OPTIONS ARE MAPLE, WALNUT, NATURAL CHERRY, STAINED CHERRY.



NATURAL OAK  
STANDARD



STAINED OAK  
STANDARD



MAPLE  
OPTION



WALNUT



NATURAL CHERRY



STAINED CHERRY





THIS YEAR, THE NAVIGATOR'S LUXURIOUS INTERIOR IS RAISED TO A FINE ART WITH THE GALLERIA DECOR, FEATURING FABRICS BY PALOMA PICASSO (SHOWN HERE IN STAINED CHERRY CABINETRY). IN ADDITION, YOU'LL LOVE THE CONVENIENCE OF OUR NEW LEGLESS TABLE AND THE NEW WALL DINETTE CABINETS.









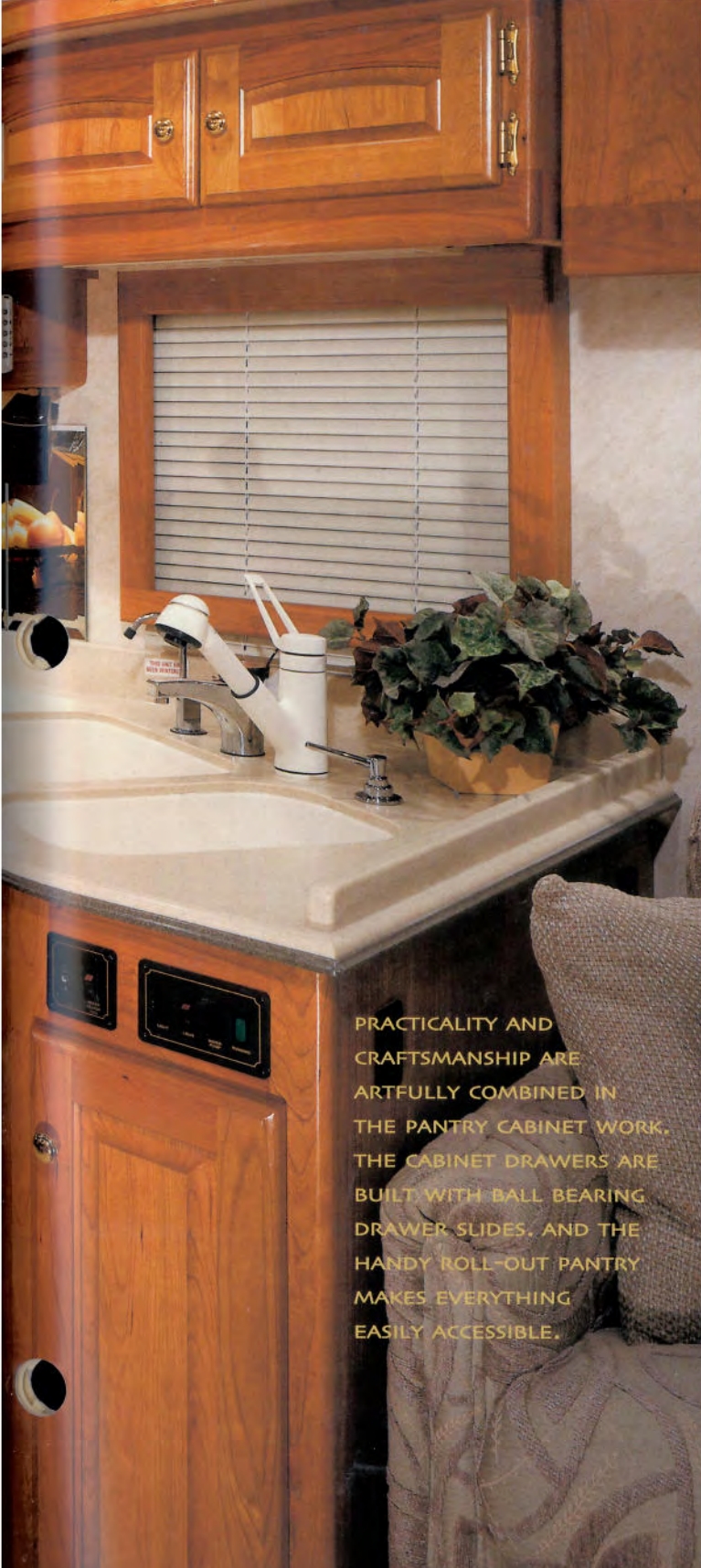


Whether it's a dinner for two or a party after the game, **Navigator's well-appointed galley provides the perfect setting for fine entertainment.** Consider the recessed high output cooktop with sealed burners and flush mount cover.

The spacesaver convection microwave oven.

And the four-door refrigerator with ice maker.

The solid surface countertop with solid surface sinks also have the convenience of a pull-out faucet and soap dispenser. And with its liberal cupboard space, storage is no problem.

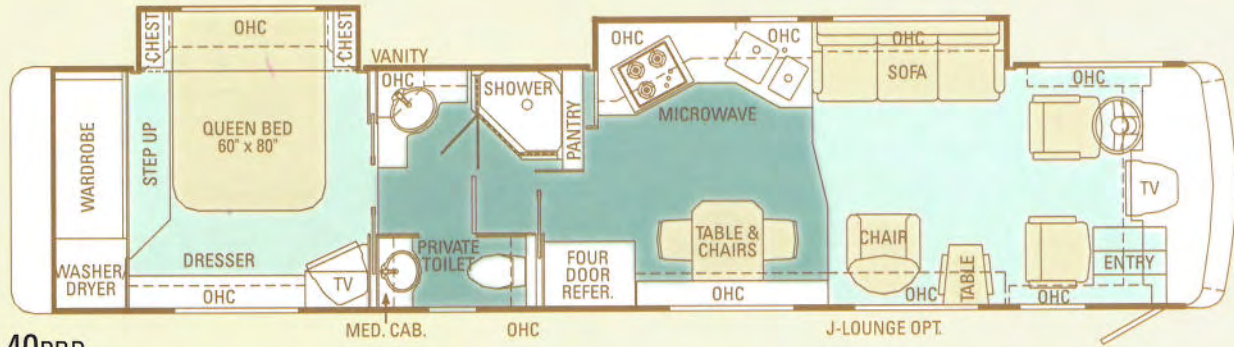


PRACTICALITY AND CRAFTSMANSHIP ARE ARTFULLY COMBINED IN THE PANTRY CABINET WORK. THE CABINET DRAWERS ARE BUILT WITH BALL BEARING DRAWER SLIDES, AND THE HANDY ROLL-OUT PANTRY MAKES EVERYTHING EASILY ACCESSIBLE.

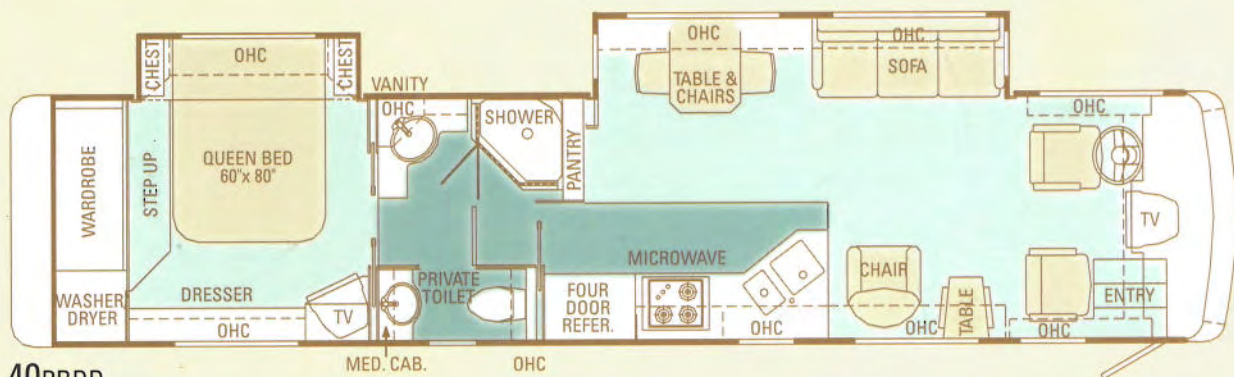




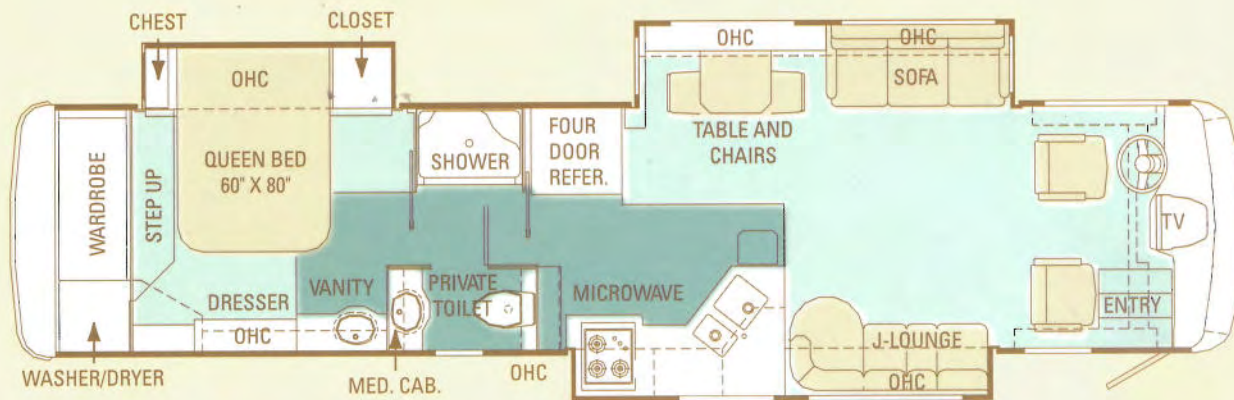
# NAVIGATOR 2002 FLOORPLANS



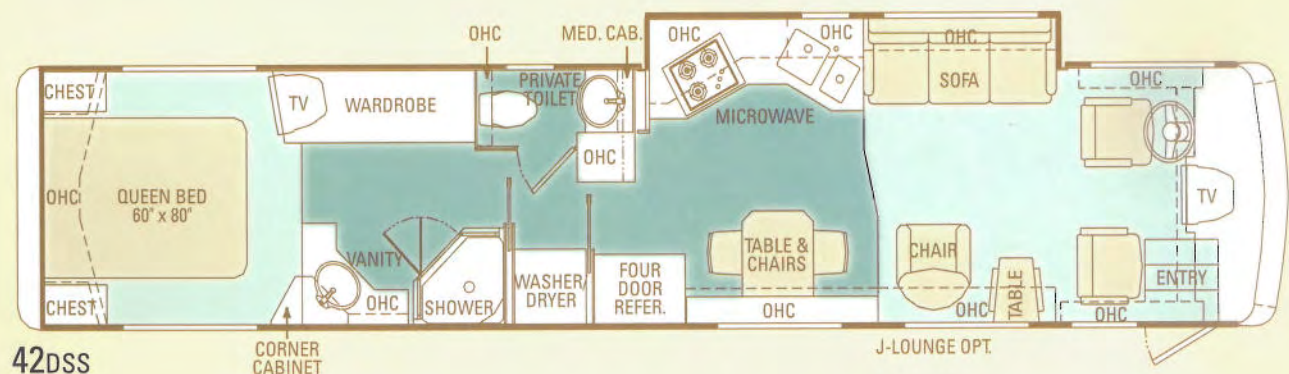
40PBD



40PBDD

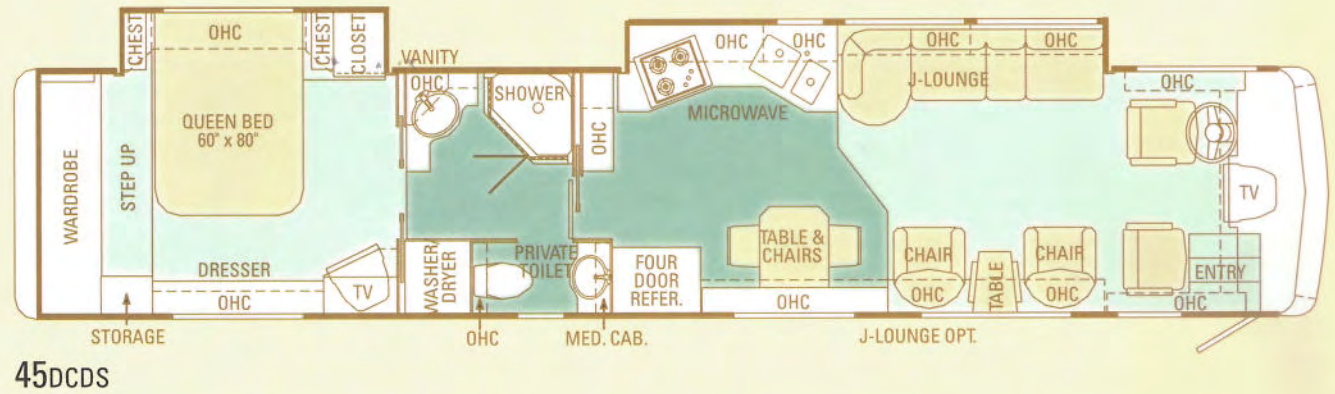
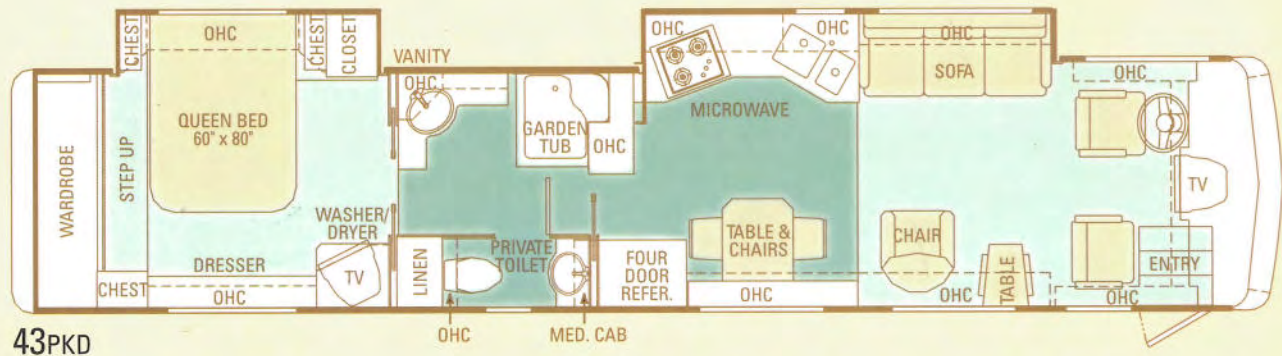
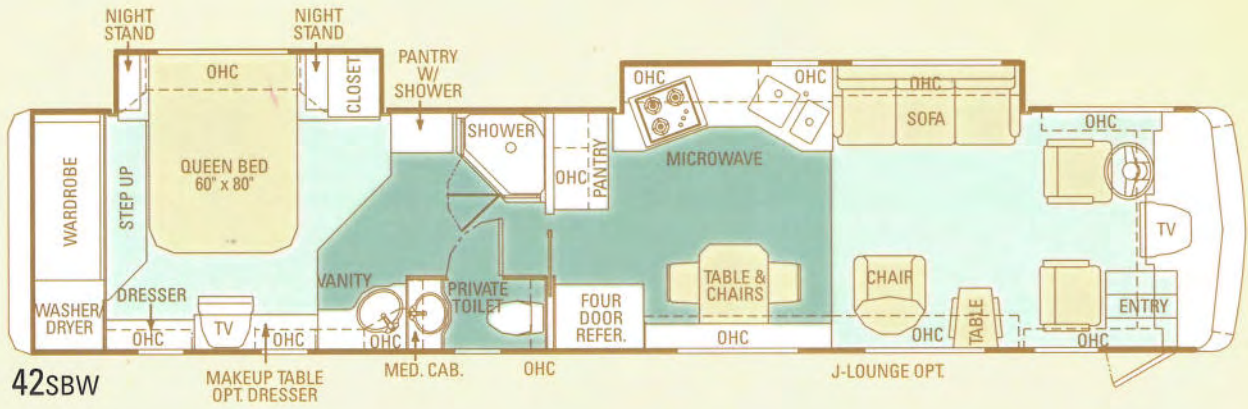


40PBT



42DSS



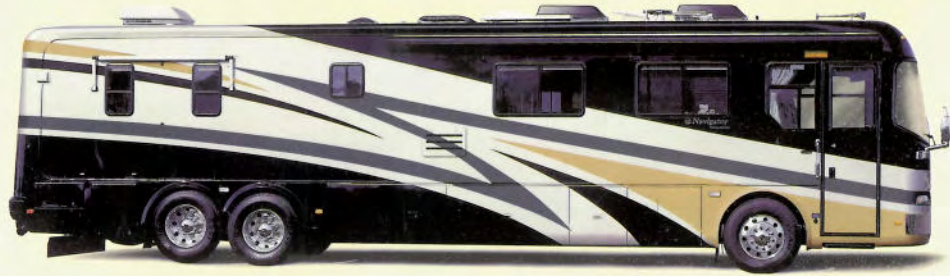


Carpet
  Tile
 

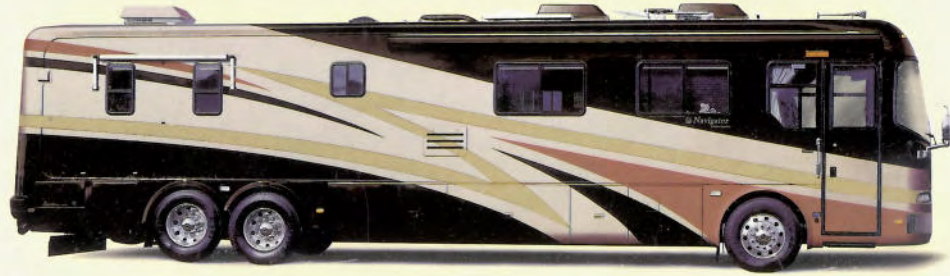
 J-Lounge option



# EXTERIOR GRAPHICS



LAVA



GALLERIA



MOONSTONE



RAFFIA



SMOKEWOOD





# S P E C I F I C A T I O N S

Weights	40PBD	40PBDD	40PBT	42SBW	42D55	43PKD	45DCDS
Gross Vehicle Weight Rating (Lbs.)	44,600	44,600	44,600	44,600	44,600	44,600	44,600
Gross Combined Weight Rating (Lbs.)	54,600	54,600	54,600	54,600	54,600	54,600	54,600
Gross Axle Weight Rating (Front) (Lbs.)	14,600	14,600	14,600	14,600	14,600	14,600	14,600
Gross Axle Weight Rating (Rear) (Lbs.)	20,000	20,000	20,000	20,000	20,000	20,000	20,000
Tag Axle Weight Rating (Lbs.)	10,000	10,000	10,000	10,000	10,000	10,000	10,000

## Measurements

Wheelbase	245"	245"	245"	269.5"	269.5"	281.5"	301.5"
Overall Length	40' 10"	40' 10"	40' 10"	42' 4"	42' 4"	43' 4"	45'
Overall Height (with A/C)	12'	12'	12'	12'	12'	12'	12'
Interior Height	79"	79"	79"	79"	79"	79"	79"
Interior Width	95"	95"	95"	95"	95"	95"	95"
Exterior Width	101.5"	101.5"	101.5"	101.5"	101.5"	101.5"	101.5"

## Tank Capacity

All Tank Capacities are Approximate. Actual "Usable Capacity" May Vary as a Result of Variances in Installation and Fabrication of the Tanks.

Water Heater (Gal.)	10	10	10	10	10	10	10
Gray Tank (Gal.)	60	60	60	60	60	60	60
Black Tank (Gal.)	46	46	46	46	46	46	46
Fresh Tank (Gal.)	100	100	100	100	100	100	100
LP Tank (Gal.)*	55	55	55	55	55	55	55
Fuel Tank (Gal.)	150	150	150	150	150	150	150

\*Actual filled LP Capacity is 80% of Listing Due to Safety Shut Off Required on Tank.

## Chassis/Engine/Suspension

### Standard Features

Semi-Monocoque Roadmaster Chassis  
 Cummins® ISL 370 Electronic Engine with Allison® 3000 MH  
 World Transmission and Electronic Shifter  
 (Standard on 40' models)  
 Cummins® ISM 500 Electronic Engine with Allison® 4000 MH  
 World Transmission and Electronic Shifter  
 (Standard on 42', 43', and 45' models)  
 Torque (1200 lbs/ft. Max. Net at 1,300 RPMs for ISL Engine)  
 (1550 lbs/ft. Max Net at 1200 RPMs for ISM Engine)  
 Rear Axle Ratio: 4.78:1 (ISL); 4.30:1 (ISM)  
 Cubic Inch Displacement: 540"/8.8L (ISL); 661"/11.0L (ISM)  
 200 Amp Alternator  
 Tires: 295/80R/22.5H  
 Cushion Air Glide Suspension with Ten Outboard Mounted Air  
 Bags and Ten Bilstein Shock Absorbers  
 Remote Inflation Connector  
 Polished Aluminum Wheels  
 Transmission Temperature Gauge  
 Transmission Oil Cooler

### Dual Fuel Fill

Dual Air Anti-Lock Braking System with Front Disc Brakes  
 and Rear Drum Brakes  
 Jacobs Engine Brake  
 Auto Slack Adjusters  
 Fuel/Water Separator  
 Rear Side Mount Radiator  
 Air Cleaner Restriction Indicator  
 Engine Block Heater with Switch on Dash  
 Air Leveling System  
 10,000 Lb. Hitch Receiver and 7-Way Hitch Plug and  
 Mount Bracket  
 Undercoating

### Options

Cummins® ISM 500 Electronic Engine with Allison® 4000 MH  
 World Transmission and Electronic Shifter; (40' Models)  
 Automatic Traction Control (Required Option)  
 Hydraulic Leveling System  
 Dual Leveling Systems (Air/Hydraulic)

Due to the large variety of options and floor plan arrangements available to our customers; actual weights for each unit can differ significantly. Holiday Rambler provides a weight sticker on each unit we produce which includes that unit's tank capacities and approximate weight. Consult your local Holiday Rambler dealer for unit availability and further information.

The information printed in this brochure reflects product design, fabrication, and component parts at the date of printing. The manufacturer reserves the right, at any time, to make changes in product design or material or component specifications as its sole option, without notice. This includes the substitution of components of a different brand or trade name which will result in comparable performance. All information printed in this brochure is subject to change after the date of printing. Some features shown or mentioned in this brochure are optional and may only be available in selected floor plans. Photographs may show props or decorations that are not standard equipment on Holiday Rambler models. Holiday Rambler, the HR logo and its design, are registered trademarks. All other products and company names are trademarks and/or registered trademarks of their respective holders.

While the color of the motorhome's exterior and the interior fabrics depicted in this sales brochure are fair and reasonable depictions, the colors depicted may not be an exact match of the actual colors because of the variances in photo-processing and variances caused by inserting the photographs within the sales brochure. Due to product improvements, changes during the model year and/or transcription errors that may occur, information represented within this brochure may not be accurate at the time of your purchase. If certain information is significant to your purchasing decision, please confirm the information with your dealer prior to submitting your order.



# STANDARDS AND OPTIONS

## BODY CONSTRUCTION

### Standard Features

- Heavy Duty Steel Superstructure
- Seamless One-Piece Molded Crowned Fiberglass Roof
- One-Piece Front and Rear Molded Fiberglass Caps
- Polished Stainless Steel Front Bumper
- Steel Framed Floor
- Two Layers Structurewood Flooring
- One-Piece Windshield
- One-Piece Generator Access Door
- Engine Access Door with Pantographic Hinges and Struts
- Laminated Gel Coat Fiberglass Sidewalls
- Full Length "Holiday Rambler" Mud Flap
- Air Activated Power Step Well Cover
- Insulated Pantographic Aluminum Baggage Doors with Power Locks
- Ozite-Lined Pass-Through Storage Compartments
- Deluxe Full Body Paint
- Raised Letter Decals
- Entry Step Storage

### Options

- Slide-Out Storage Tray (One Side)
- Slide-Out Storage Tray (Complete Pass-Through)
- 3M® Film Front Mask
- Acrylic Front Protective Mask
- Rear Ladder

## COCKPIT

### Standard Features

- Driving Lights/Headlights
- Halogen Fog Lights
- Audible Turn Signals
- Roof Mounted Dual Trumpet Air Horns
- In-Dash Rear Vision System and Color Monitor with AM/FM Radio and 8-Disc CD Player
- CB Radio with Antenna
- Trip Tek® 3100-5 Message Center
- Digital/Analog Cellular Antenna
- Lighted VIP Smartwheel® with Controls for Windshield Wipers, ICC and Cruise Control
- Triple Head Power Controlled Heated Exterior Mirrors with Turn Indicator Lights
- Low Coolant Warning Light and Buzzer
- Leather 6-Way Power Pilot and Co-Pilot Seats with Electric Lumbar Heated Adjustments and Power Footrest on Co-Pilot Seat

- Carpet Driver and Passenger Floor Mats

- Power Sunvisors
- Overhead Ventilation Blowers
- Pantographic Windshield Wipers
- Power Steering
- Black Face with Chrome Ring Gauges on Burlwood Instrumentation Panel
- Cruise Control Light on Dash
- Adjustable Accelerator and Brake Pedals
- Docking Lights
- Drink Tray
- Antenna "Up" Light on Dash

### Options

- Electronic Privacy Drape 110V
- Leather Buddy Seat with Power Footrest
- GPS Navigation System

## APPLIANCES AND ACCESSORIES

### Standard Features

- Four-Door Refrigerator with Ice Maker and Raised Panel Doors
- Recessed High Output Cooktop with Three Sealed Burners and Flush Mount Covers
- Spacesaver Convection Microwave with Touch Control
- Systems Monitor Panel
- Electric TV Antenna with Booster
- Digital Satellite System Prep
- 24" Flat Screen Color Stereo TV with Remote in Living Area
- 20" Flat Screen Color Stereo TV with Remote in Bedroom
- Home Theater System with DVD Player
- Stereo Four-Head VCR with Video Switching Box
- Cable TV Hook-Up and Telephone Jacks
- Door Bell
- Washer/Dryer Prep

### Options

- Large Double-Door Refrigerator with Ice Maker
- AC/DC Exterior Pullout Freezer/Refrigerator (Requires Slide-Out Storage Tray Option on One Side)
- Vented Combination Washer/Dryer
- Fully Automatic Digital Satellite System
- 42" Plasma TV in Ceiling
- Exterior Entertainment Center (20" Flat Screen TV, Two Speakers, AM/FM Stereo Cassette, Phone Jack, 12V, 110V Receptacles)

## INTERIOR

### Standard Features

- Stained Oak Cabinetry
- Solid Wood Colonial Arch Raised Doors on Upper Cabinetry
- Solid Wood Square Raised Panel Doors on Lower Cabinetry
- Carpet Lined Cabinet Shelves
- Wall Dinette Cabinets with Solid Surface Top
- Dresser with Solid Surface Top in Bedroom (N/A: 42DSS, 42SBW))
- Make-Up Table and Dresser with Solid Surface Top (42SBW)
- Ball Bearing Drawer Slides
- Padded Vinyl Ceiling with Recessed A-Look (Chrome) Living Room Ceiling
- Solid Surface Kitchen Countertop with Integrated Solid Surface Sink and Two Sink Covers
- Solid Surface Bathroom Countertops with Integrated Sinks
- Duet Day/Night Shades, Valances and Padded Lambrequins in Living Area and Bedroom
- Mini Blinds and Wooden Valance in Kitchen and Bathroom
- Fabric Sleeper Sofa (N/A: 45DCDS)
- Fabric Rocker Recliner(s) (N/A: 40PBT)
- Fabric J-Lounge (40PBT, 45DCDS)
- Wallpaper Throughout
- Designer Carpeting in Living Area and Bedroom
- Legless Solid Surface Dinette Table with Four Chairs
- Rollout Pantry (40PBD, 40PBDD, 42SBW)
- Ceramic Tile in Kitchen and Bathroom
- Oversized Rear Wardrobe Closet with Mirrors
- One-Piece Fiberglass Shower
- Glass Shower Door with Brass Frame
- Beveled Decor Mirrors
- Full Length Dressing Mirror
- Medicine Cabinet
- Bathroom Mirror
- Towel Bars in Bathroom
- Raised Panel Bathroom Door
- Open Bath (42DSS, 42SBW)
- Single Door Closed Bath (40PBT)
- Double Door Closed Bath (N/A: 40PBT, 42DSS, 42SBW)
- Bedspread and Pillows
- Lamp Table (N/A: 40PBT)
- Decorative Headboard and Beveled Mirror (42DSS)



Bright Solid Brass Cabinet Pulls  
Travel Locks  
Nightstands with Solid Surface  
Countertops

#### Options

Natural Oak Cabinetry  
Natural Maple Cabinetry  
Natural Cherry Cabinetry  
Stained Cherry Cabinetry  
Walnut Cabinetry  
Single Door Closed Bath (42DSS)  
Telescoping Door Closed Bath (42SBW)  
Wrap Around Computer Table  
(Requires Recliner)  
Leather Euro Recliner  
Leather Rocker Recliner  
Leather J-Lounge  
Leather Love Seat  
Leather Sleeper Sofa  
King Bed (40PBT, 42SBW, 43PKD,  
45DCDS)  
Booth Dinette  
Shower Seat  
Bath Tub

#### ELECTRICAL SYSTEMS AND LIGHTS

##### Standard Features

50 amp 120V / 240V Distribution Panel  
and Power Cord with Quick-  
Disconnect  
Onan® 10 KW QD Diesel Generator  
on Power Slide-Out with  
Auxiliary Start Switch  
RC 7GS Panel with 2500 Watt Inverter  
Electrical Panel Front Roadside  
Compartment  
Four 6V Deep Cycle Batteries  
Two 31D Deep Cycle Batteries  
Dual 12V Outlets in Dash  
Battery Disconnect Switch  
Battery Maintainer  
Porch Light  
Courtesy Night Lights in Entry Step  
and Bedroom  
Water Pump Switch (Galley, Bathroom,  
Service Bay)  
120V Receptacles Inside Storage  
Compartment  
Underhood Utility Light  
Fluorescent Lights Throughout  
Halogen Lights with Dimmer Switches  
Under Cabinets in Living Room,  
Kitchen, and Bedroom  
Cosmetic Vanity Lights in Bathroom  
Lighted Utility Center (Telephone, Cable  
TV, Water, Electrical Hook-Ups)  
Decorative Wall Lights in Bedroom

Decorative Wall Lights in Living Area  
Mood Lights Throughout

#### Options

Power Cord Reel  
Solar Panel  
Pure Sine Wave Inverter  
Surge Protector  
All Electric Coach Includes: Two Trace  
Inverters, Five Gel Cell Batteries on  
Super Slide Battery Tray, 270 amp  
Alternator along with 300 amp Battery  
Isolator, Norcold® Four-Door  
Refrigerator, Princess® Two Burner  
Cooktop, Aqua Hot® Heating System  
and Two Solar Panels)

#### PLUMBING AND LP SYSTEMS

##### Standard Features

Manabloc® Water System for  
Entire Coach  
10-Gallon LP Gas/Electric Water Heater  
with Electronic Ignition (DSI)  
Water Pump  
Water Heater Bypass Valve  
Central Water Purifier in Service  
Compartment  
Pullout Faucet and Soap Dispenser  
in Kitchen  
Water Filter in Kitchen  
Single Lever Shower Faucet  
China Toilet  
No-Fuss Flush Black Holding Tank  
Rinsing System  
Insulated Systems Compartment with  
Easy Access to Hook-Up  
Outside Shower with Hot and Cold  
Water  
Gravity and Pressurized Water Fill  
Service Bay Faucet

#### Options

Aqua-Hot® Heating System  
(ILO Furnace and Water Heater)  
Insta-Hot® Water System

#### HEATING, VENTS AND AIR CONDITIONING

##### Standard Features

Low Profile Ducted 13.5M BTU Air  
Conditioners with Ducted Air  
and Wall Thermostat with Heat Pumps  
(Two on 40' models and three  
on all others)  
42M BTU Electronic Ignition Furnace  
Electronic AC/Heat Climate  
Control System

12V Attic Fan with Wall  
Thermostat in Kitchen  
12V Attic Fan in Bathroom  
Wet Bay with 12V Heater

#### Options

Two Low-Profile 110V  
Baseboard Heaters

#### WINDOWS, DOORS

#### AND AWNINGS

##### Standard Features

Radius Dual Pane Safety Glass Dark  
Tinted Slider Windows  
Front Entry Door with Removable  
Screen and Awning  
Keyless Remote Entry System  
with Pocket Remote  
Power Entrance Step  
Tinted Skylight in Bathroom  
Interior and Exterior Grab Handles  
Patio Awning with Color  
Coordinated Hardware  
Window Awning(s)  
Slide-Out Awnings

#### Options

Carefree® Automatic Patio Awning  
Girard® Automatic Patio Awning

#### SAFETY

##### Standard Features

Back Up Alarm  
Fire Extinguisher  
Deadbolt Lock on Entrance Door  
120V GFI Protected Circuit  
(Kitchen, Bathroom, Exterior)  
LP Gas Detector  
Smoke Detector  
Carbon Monoxide Detector  
Pilot and Co-Pilot Three-Point Seat Belts  
(Lap and Shoulder)  
Third Brake Safety Light  
Egress Window

#### Options

Deluxe Security System  
Security Safe



BUILDING LASTING MEMORIES.



FUN GET-TOGETHERS. EXCITING RALLIES. BREATHTAKING EXPLORATIONS OF THE GREAT OUTDOORS. SINCE WE ROLLED OUT OUR FIRST TRAVEL TRAILER IN 1953, HOLIDAY RAMBLER® HAS BEEN HELPING RECREATIONAL VEHICLE OWNERS ENJOY THE BEST RV EXPERIENCE POSSIBLE. INNOVATIONS TO ENHANCE RV ADVENTURES. OVER THE YEARS, WE'VE MADE NUMEROUS INNOVATIONS TO HELP OUR OWNERS BUILD RICHER, MORE LASTING MEMORIES. THESE ENGINEERING ACCOMPLISHMENTS INCLUDE MANY INDUSTRY FIRSTS, SUCH AS RVs WITH AERODYNAMIC RADIUS CORNERS, REFRIGERATORS, HOLDING TANKS, TAG AXLES, ALUMINUM BODY FRAMING AND KITCHEN-SUITE SLIDES. UNRIVALED SERVICE. WE'VE ALSO IMPLEMENTED A SERVICE PROGRAM THAT'S AMONG THE BEST IN THE BUSINESS. ALONG WITH OUR PARENT COMPANY, MONACO COACH CORPORATION, WE'RE THE ONLY MANUFACTURER PROVIDING 24 HOUR A DAY, SEVEN DAY A WEEK DEALER SUPPORT BY TRAINED COMPANY EMPLOYEES. WE ALSO HAVE A NETWORK OF 400 DEALERS AND 1,000 INDEPENDENT SERVICE FACILITIES ACROSS THE U.S. SUPERIOR BENEFITS. AS A HOLIDAY RAMBLER OWNER, YOU'LL ALSO GET A YEAR'S FREE SUBSCRIPTION TO *HOLIDAYS* MAGAZINE AND A ONE-YEAR FREE MEMBERSHIP IN THE HOLIDAY RAMBLER CLUB, WHICH INCLUDES 24-HOUR EMERGENCY ROADSIDE ASSISTANCE. SO NO MATTER WHICH HOLIDAY RAMBLER YOU CHOOSE FROM OUR FULL LINE OF PRESTIGIOUS TRAVEL TRAILERS, FIFTH WHEELS AND MOTORHOMES, YOU'LL HAVE THE ENGINEERING EXCELLENCE, TOP-NOTCH SERVICE AND SUPERIOR BENEFITS TO ASSURE THE BUILDING OF LASTING MEMORIES.

HOLIDAY RAMBLER®

*This is Living.*

(800) 245-1778

**MNC  
LISTED  
NYSE**

Monaco is traded on  
the New York Stock