

WINNEBAGO  
RECREATION

2001 ULTIMATE ADVANTAGE



Luxury, power and performance are the definitive elements of the 2001 Ultimate Advantage®. It all begins with Winnebago Industries' exclusive Ulti-Bay monocoque chassis. Ultimate Advantage combines diesel power with nimble and responsive handling, expansive exterior storage, upscale appointments and amenities, and Winnebago Industries' design and craftsmanship to create the ultimate in a luxury motor coach.



Your guests will be amazed at the spaciousness created by the **STOREMORE**® slideout room. The 40J features an angled galley/sofa slideout, dining table and chairs, and an available J-love seat. Premium Flexsteel® furniture is also available in leather for an added touch of elegance. The interior is further enhanced by beautifully-crafted wood cabinetry available in your choice of Salem Cherry (shown here) or Portsmouth Oak.

The available central vacuum system features a detachable 30' flexible hose for convenient and easy clean-up.



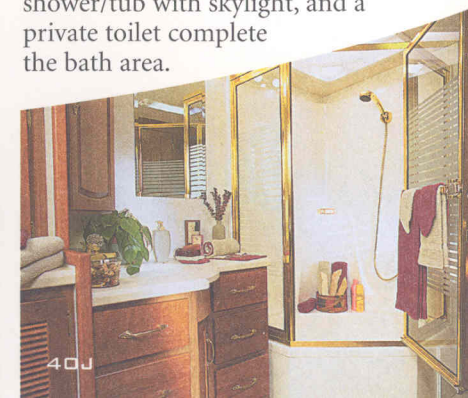
The cab area has been completely updated for 2001. The wraparound dash provides an excellent view of the instrument panel and places controls within easy reach for your driving comfort and convenience.



The luxury lounge leather passenger seat available in the cab area is wider and a six-way power assist pedestal provides the ultimate in comfort.



The walk-through split bath in the 40J is both roomy and luxurious. Two Corian® sinks and vanities with brass accented fixtures, ceramic tile floorcovering, a shower/tub with skylight, and a private toilet complete the bath area.





40J

Galley features include a Magic Chef® sealed burner range with available oven, Moen® single-control faucet with pull-out sprayer, Corian solid surface countertops, and an available dishwasher (NA 36C). The elegant ceramic tile floorcovering has been extended throughout the galley and bath area for added function and beauty.

The Norcold® four-door refrigerator provides plenty of storage and is available in place of the standard double-door refrigerator.

It's easy to accommodate additional overnight guests with the Flexsteel sofa/sleeper that converts to a comfortable and roomy bed. The 36C also features a three-cushion banquette or an available lounge chair w/three-drawer cabinet. Entertainment features include a 25" stereo TV with stereo VCR, video selection system and Sound System Deluxe with Q® Surround Sound. The available digital satellite system and DVD player provide even more entertainment choices.

## 2001 ULTIMATE ADVANTAGE

The **ONEPLACE**® Systems Center places frequently checked switches, gauges and controls in a convenient central location so you don't have to move about to check your systems. The **POWERLINE**® Energy Management System oversees 110 volt electrical distribution and automatically cycles key appliances "on and off" during peak energy use to maintain optimum electrical system efficiency and reduce nuisance "tripping" of campground circuit breakers.



36C

The available vented combination washer/dryer offers the convenience of home and, when not in use, is concealed behind stylish wood louvered doors.



The rear slideout on the 36C allows for both a generous wardrobe and a residential queen-size bed with a Serta® innerspring mattress in the bedroom. Adjustable reading lights and the built-in 19" color TV help you relax and ease you to sleep.



36C GREENBRIER

## ULTI-BAY™ THE ULTIMATE DIFFERENCE

The Ulti-Bay chassis features a Winnebago Industries mid-section incorporated with front and rear sections supplied by Freightliner. The result is an advanced monocoque chassis with the backing of a nationwide service network. Ulti-Bay's monocoque design provides superior ride quality and responsive control and features available independent front suspension, a wide track stance and a high volume air suspension system along with expansive exterior storage.

Ulti-Bay's impressive exterior storage is made possible by the elimination of cumbersome

mid chassis rails that impede on storage space. In addition, large components such as the generator, water heater, furnace and holding tanks are integrated into the fore and aft chassis sections creating larger unobstructed center storage bays, including a cross-coach storage compartment.

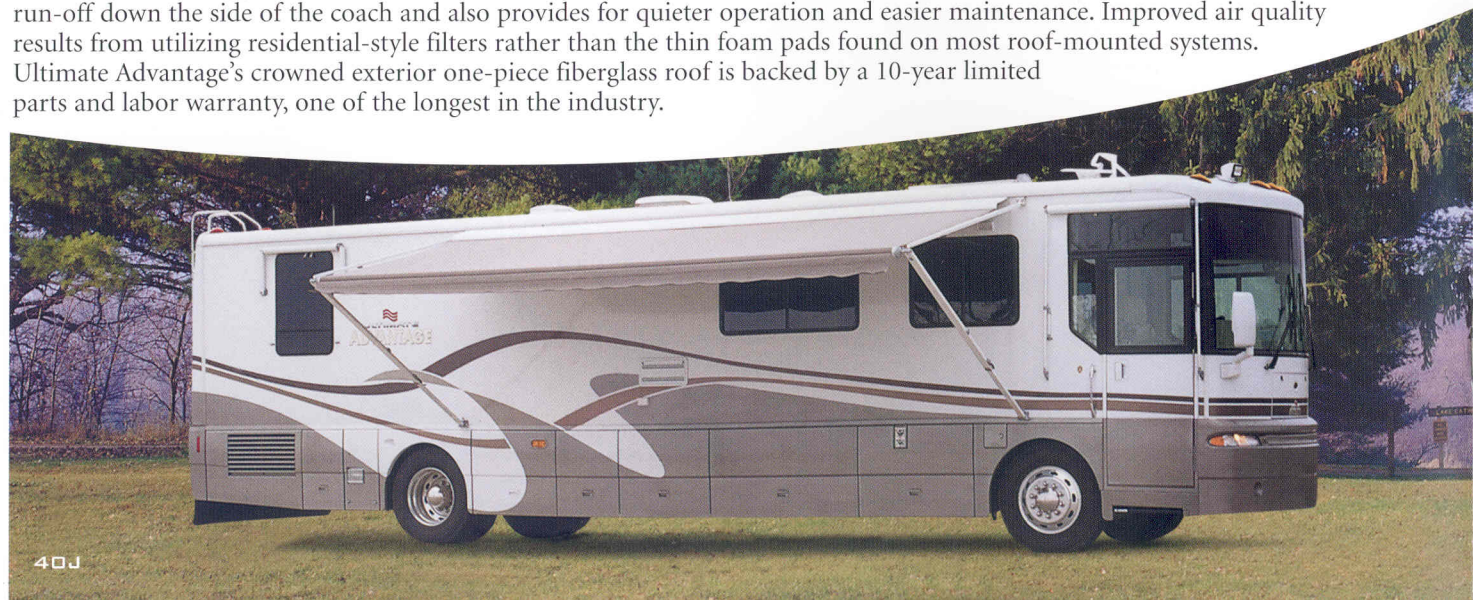
Storage is further enhanced by the StoreMore Hydraulic Slideout System. StoreMore enables interior and exterior storage compartments to extend with the slideroom for easy access.



## THE ULTIMATE IN EXTERIOR DESIGN & TECHNOLOGY

The exterior service center provides a convenient central location for the water and drainage system controls. Added features include a monitor panel and exterior wash station with paper towel holder and soap dispenser.

The Ultimate Advantage is appropriately named since it offers so many advantages over competitive coaches. For 2001, we worked with our mirror supplier to develop an exterior mirror with over a 58% larger viewing area for improved visibility. It's a feature that you will only find with Winnebago Industries. Another exclusive is our innovative **TRUEAIR™** Residential Central Air Conditioning System which provides optimum air distribution throughout the coach and a level of cooling comfort that is unmatched in the industry. By locating the cooling unit in the basement, roof pods are eliminated creating a more streamlined appearance and a lower vehicle profile. The system's location prevents annoying cooling unit condensation run-off down the side of the coach and also provides for quieter operation and easier maintenance. Improved air quality results from utilizing residential-style filters rather than the thin foam pads found on most roof-mounted systems. Ultimate Advantage's crowned exterior one-piece fiberglass roof is backed by a 10-year limited parts and labor warranty, one of the longest in the industry.



## INTERIOR COLOR THEMES

Colors are displayed with the main fabric on top followed by the accent fabric and carpeting.



SALEM CHERRY  
WOODGRAIN

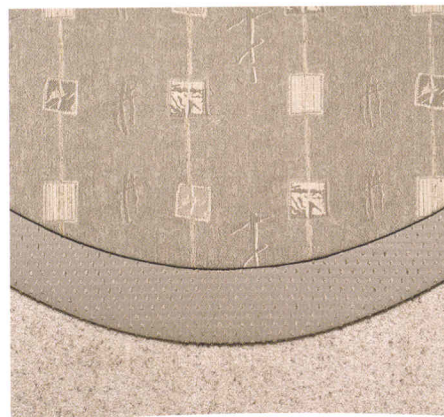


PORTSMOUTH OAK  
WOODGRAIN

OXFORD BLUE



PLATINUM



GREENBRIER



## EXTERIOR COLOR THEMES

The exterior graphics packages have been redesigned and are available in three newly updated color themes.

SAND



STEEL



CYPRESS



## 2001 ULTIMATE ADVANTAGE SPECIFICATIONS

	36C	38K	40J
LENGTH	36'7"	37'11"	39'11"
EXTERIOR HEIGHT*	12'1"	12'1"	12'1"
EXTERIOR WIDTH <sup>A</sup>	8'5.5"	8'5.5"	8'5.5"
EXTERIOR STORAGE <sup>∞</sup>	125 cu. ft.	159 cu. ft.	184 cu. ft.
INTERIOR HEIGHT	6'8"	6'8"	6'8"
INTERIOR WIDTH	8'0.5"	8'0.5"	8'0.5"
FRESH WATER CAPACITY W/HEATER*	109 gal.	109 gal.	109 gal.
HOLDING TANK CAPACITY - BLACK/GRAY	50/54 gal.	50/54 gal.	50/54 gal.
LP CAPACITY <sup>∅</sup>	39 gal.	39 gal.	39 gal.
FUEL CAPACITY	100 gal.	100 gal.	100 gal.
GVWR	GVWR plus 5,000 lbs. w/Class 3 hitch		
GVWR	29,410 lbs. (31,000 lbs. w/IFS)		
GAWR (FRONT)	10,410 lbs. (12,000 lbs. w/IFS)		
GAWR (REAR)	19,000 lbs.	19,000 lbs.	19,000 lbs.
WHEELBASE	227"	243"	267"

### AUTOMOTIVE/CHASSIS

	36C	38K	40J
Air Suspension, Engine Exhaust Brake, Hydraulic Leveling Jacks indicator lights, Stylized Aluminum Wheels, Trailer Hitch 5000# draw bar/500# maximum vertical tongue weight & wiring	S	S	S
Freightliner XC/Winnabago Industries <b>ULTI-BAY</b> Monocoque Chassis, Caterpillar Freightliner Electronic (CFE) Engine, 7.2L turbo-charged/after cooled 330hp @ 2,200 RPM; 860 ft. lbs. @ 1,400 RPM, hydraulically-actuated, electronically-controlled unit injectors (HEUI), engine block heater (1,000 W), Jacobs exhaust brake, Allison 6-speed electronic 3000 MH World Transmission, touch pad gear selector, oil-to-coolant transmission cooler, ratios: 4 = 1.00:1; 5 = .75:1; 6 = .65:1, rear mounted radiator w/engine driven fan, 50-state certification emissions control system, Caterpillar electronic speed control, Meritor <sup>®</sup> I-beam front axle (standard 36C & 38K, NA 40J), 81.9" track width, NeWay <sup>®</sup> air suspension† front suspension, 1.5" diameter stabilizer bar, Meritor RS-19-145 rear axle, axle ratio 4.63, track width 72.44", NeWay air suspension† rear suspension, -brakes - full air, engine driven compressor, air dryer w/automatic heated moisture ejector, four-wheel ABS, front 15" x 4" drum, rear 16.5" x 7" drum, park rear axle service brakes, battery - Group 31 commercial, 760 CCA, maintenance free (2), 160 amp alternator, 100-gallon fuel tank, between rails, behind front axle, LH & RH fill; fuel/water separator, Michelin <sup>®</sup> XRV Tires 255/80R 22.5 LR G, Michelin XZE Tires 275/80R 22.5 LR G (w/IFS), four forged & polished aluminum wheels & two steel 22.5 x 7.5, 10-bolt on 11.25" bolt circle, 22.5 x 8.25, 10-bolt on 11.25" bolt circle (w/IFS)	S	S	S
Independent Front Suspension (IFS) NeWay, without stabilizer bar*	O	O	S

### CAB AREA & DRIVER CONVENIENCES

	36C	38K	40J
Flexsteel Cab Seats w/Seat Belts 3-point shoulder & lap w/retractors, armrests, adjustable lumbar support, multi-adjustable slide/recline, fabric covered, Center Console Cabinet, Cigarette Lighter/12 Volt Electrical Supply, Cruise Control, Custom Leather-wrapped Steering Wheel, Defroster Fans (2) auxiliary 2-speed, Electronic Compass w/Outdoor Thermometer, Instruments/Gauges speedometer/odometer/tripodometer, tachometer, voltmeter, oil pressure, engine coolant temperature, fuel gauge, headlamp switch, transmission temperature gauge, dual air pressure gauge, ignition switch, horn, Intermittent Windshield Wipers, Light Filtering Shades cab windows, Map Lights (2), Power Assist Steering w/tilt wheel, Power Door Lock, Rearview Monitor System w/single camera & 1-way audio, Sony <sup>®</sup> , Rubber Driver Floor Mat, Seat Pedestal 6-way power assist, driver seat, Sunvisors (2), Suspension Air Dump Feature† electronically actuated through the HWH leveling jacks touch pad, Trim Panels driver & passenger sides w/drink holders, Window (Driver) partial slider w/screen, dual-glazed, Window (Passenger) fixed, dual-glazed	S	S	S
Flexsteel Cab Seats (Driver & Passenger) leather insert w/vinyl surround, (passenger seat is wider luxury lounge seat) w/6-way power assist	O	O	O

### ENTERTAINMENT

	36C	38K	40J
19" AC Color TV w/remote, bedroom, 25" AC Color Stereo TV (Front) w/remote, CB Prep includes: antenna, antenna lead, 12 volt power supply, Exterior Entertainment Center w/Cassette DC receptacle, AC duplex receptacle, AM/FM radio, TV jack, radio antenna, speakers (2), telephone jack, Radio (Cab) AM/FM stereo cassette, Sony, flexible roof-mounted rubber antenna, Radio Power Switch main/auxiliary battery, Satellite System Ready, Sound System Deluxe w/Q Surround Sound amplifier, 5 cube speakers, 2 sub-woofers, Stereo VCR w/Remote, Telephone Input & Interior Jacks (2), TV Enhancement Package cable input, coax wiring & interior antenna jacks, exterior antenna jack, antenna reminder light, Video Selection System	S	S	S
Compact Multi-disc Changer Sony	O	O	O
DVD Player	O	O	O
Exterior Entertainment Center w/CD Player DC receptacle, AC duplex receptacle, AM/FM radio, TV jack, radio antenna, speakers (2), telephone jack	O	O	O
Radio (Cab)* Sony, AM/FM stereo CD	O	O	O
Satellite Dish Antenna Winegard <sup>®</sup> , digital elevation sensing unit, manual*	O	O	O
Satellite Dish Antenna Winegard, digital elevation sensing unit, power*	O	O	O
Stereo System (Bedroom) AM/FM cassette* or CD player*	O	O	O

### INTERIOR

	36C	38K	40J
Ceiling Lights fluorescent, recessed, Day/Night Micro-Pleated Shades, Decorative Dining Light, Decorative Wall Lamp(s), Dual-glazed/Thermo-insulated Windows, Front Wraparound Pleated Shade w/Wands, Halogen Lights under overheads, Reading Lights, Stepwell Light w/Interior Switch, Stepwell Storage Compartment, Textured Fabric Ceiling, Wall Switches all ceiling lights, Wardrobe Cabinet carpeted floor, cedar lined, clothes rod, light (NA 36C), shelf (NA 36C), sliding mirrored door (NA 36C)	S	S	S
Decorative Picture(s)		S	S
Wall Mirror decorative	S		S

### CABINETS

	36C	38K	40J
Portsmouth Oak Or Salem Cherry Woodgrain stile-and-rail construction w/oval-arched raised panel inserts on upper doors & square raised panel inserts on lower doors	S	S	S

### COUNTERTOPS

	36C	38K	40J
Corian Countertops w/beveled edge, galley & bath, Woodgrain-look Laminate w/beveled wood edge, dining table, lounge table & bedroom nightstands	S	S	S

### FLOORCOVERING

	36C	38K	40J
Ceramic Tile Floorcovering used throughout galley & bath area, Premium Carpeting w/Pad	S	S	S

### FURNITURE

	36C	38K	40J
Dining Table & Chairs (4) free standing, fabric		S	S
Dining Table & Chairs (2) free standing, (2) folding, fabric		S	
Flexsteel Banquette* fabric, w/throw pillows		S	
Flexsteel Banquette* leather, w/throw pillows	O		
Flexsteel Couch* fabric, w/throw pillows		S	S
Flexsteel Couch* leather, w/throw pillows		O	O
Flexsteel J-Love Seat* fabric or leather		O	O
Flexsteel Lounge Chair* fabric & Pull-out Table		S	S
Flexsteel Lounge Chair* leather & Pull-out Table		O	O
Flexsteel Lounge Chair* fabric or leather & Three-drawer Cabinet w/Magazine Rack	O		
Flexsteel Sofa Sleeper* fabric, w/shelf & throw pillows		S	
Flexsteel Sofa Sleeper* leather, w/shelf & throw pillows	O		

## GALLEY

	36C	38K	40J
Coffemaker, Everpure® Water Purification System w/separate faucet, Fluorescent Ceiling Light w/decorative wood frame, Fluorescent Light Under Cabinet, Glass Partition, Microwave/Convection Oven w/Range Fan residential 30", Sharp®, Moen® Double Bowl Polished Stainless Steel Sink w/Corian sink covers, Moen Single-control Faucet w/pull-out sprayer, Pantry® Powered Ventilator Fan, Range Cover bi-fold w/Corian overlay, Range Top 3-burner w/storage below, recessed, sealed burners, Magic Chef, Refrigerator/Freezer large double-door w/icomaker®, Norcold, Silverware Tray, Wastepaper Basket	S	S	S
Appliance Storage Cabinet			S
Cutting Board slideout		S	
Dishwasher built-in under countertop		O	O
Range 3-burner w/large oven, glass door, sealed burners, Magic Chef	O	O	O
Towel Rack pull-out, mounted in cabinet under sink		S	
Refrigerator/Freezer* 4-door w/icomaker, w/woodgrain raised panel inserts, Norcold	O	O	O
Utility Tray tip-out		S	

## BATH

	36C	38K	40J
Corian Oval Sink(s), Lavatory Cabinet, Linen Cabinet, Makeup Lights, Medicine Cabinet, Phoenix® Single-control Lavatory Faucet(s), Porcelain Toilet w/foot pedal & sprayer, Powered Ventilator Fan, Shower Door glass w/etching, Shower Light, Single-control Shower Faucet w/etched shower head, Skylight, Tissue Holder, Towel Ring(s)	S	S	S
Assist Rail	S		
Shower	S		
Shower/Garden Tub w/fixed tub spout		S	S
Shower Head hand-held	O	O	O
Shower Package hand-held shower head, fold-down shower seat	O		
Towel Bar(s)		S	S
Wall Mirror frameless w/beveled edge			S

## BEDROOM

	36C	38K	40J
Bedsread, Pillow Shams & Throw Pillows, DC Receptacle, Decorative Mirror backwall, Decorative Wall Lamps, Fabric Headboard, Reading Lamps adjustable, Serta Innerspring Mattress	S	S	S
Powered Ventilator Fan	S		
Wainscoting w/chair rail		S	S

## EXTERIOR

	36C	38K	40J
AC Duplex Receptacle, Awnings* patio, entrance door, Awning Rails w/rain gutter, Docking Lamps, Entrance Door main w/screen door, Tri/Mark KeyOne® System, deadbolt lock, sliding stepwell cover panel, keyless entry w/remote, Entrance Door Step single, electric w/doorjamb switch, Fog Lamps, Graphics Package Steel recommended w/Oxford Blue, Or Sand recommended w/Platinum or Greenbrier, Or Cypress recommended w/Greenbrier, Ladder, Locking Fuel fill Doors - LH & RH, Mirrors low mount, electric remote w/defrost, Porch Light w/interior switch, Rear Mudflaps, Roof-mounted Air Horns, Service Light driver side, Sidewall Skin 1-piece fiberglass, smooth, high-gloss, Squeegee, Storage Compartments smooth valance panel doors, trunk liners, gas struts, Tri/Mark KeyOne System, lights, Under Hood Light	S	S	S
Electric Awnings* patio & entrance door	O	O	O
Full-width Mud Guard*	O	O	O
Slideout Compartment Tray	O	O	O
Spotlight w/wireless remote	O	O	O
Window Awnings*	O	O	O

## SYSTEMS

	36C	38K	40J
1 1/2" Water Tank Drain, 10 Gallon Electronic Ignition Water Heater w/Motoraid, 10 Watt Solar Panel/Battery Charger, 50 Amp Power Cord Superflex cord, AC/DC Electrical Distribution System AC & DC breaker panels, Automatic Dual Battery Charge Control, Automotive Heater/Air Conditioner, Auxiliary Start Circuit, Chassis Battery Charging System Intellitec® Bi-Directional Isolator Relay Delay, Coach Battery Disconnect System, Coach Batteries (3) deep cycle, Exterior Wash Station, Generator 6,500 watt, Onan® Marquis®, LP, Gravity Water Tank Fill, Heated Holding Tank Compartment, Holding Tank Flushing System black tank only, Inverter/Charger DC/AC, 1500 watt w/remote panel, Heart Interface®, LP Tank permanent mount w/gauge,	S	S	S

36C 38K 40J

**ONEPLACE** Systems Center, **POWERLINE** Energy Management System, Service Center (**Drainage**) drainage valves, holding tank flushing system, sewer hose, monitor panel, city water hookup/tank diverter fill, drain for fresh water system, exterior wash station w/pump switch, paper towel holder, soap bottle holder, **Service Center (Electrical/Water)** cable input, power cord, shoreline/generator automatic changeover switch, telephone input, **Shoreline/Generator Automatic Changeover Switch**, **TRUEAIR** Central Air Conditioning System, Water Heater Winterization Bypass Valve manual, **Water Pump** demand w/accumulator tank, **Water System Winterizing Valve**, **Water Tank Fill** pressurized city hookup w/diverter valve

	36C	38K	40J
Central Air Heat Pump		O	O
Central Vacuum Cleaner		O	O
Combination Washer/Dryer		O	O
Furnace 25,000 BTU, Suburban®, low profile, secondary		O	O
Furnace 35,000 BTU, Suburban, low profile, primary		S	S
Furnace 40,000 BTU, Suburban, low profile, primary		S	
Generator 7,500 watt, Onan Quiet Diesel™		O	O
Water System Winterizing Kit automatic		O	O

## SLIDEOUT

	36C	38K	40J
Slideout Room flat-floor, dining table/sofa, slideroom cover (slideout section), <b>STOREMORE</b>	S		
Slideout Room galley/sofa, slideroom cover (slideout section), StoreMore		S	S
Slideout Room (rear wardrobe)		S	

## SAFETY

	36C	38K	40J
3-Point Cab Seat Belts, 10 B.C. Fire Extinguisher, Acrylic Exterior Assist Handle lighted w/logo, Bumpers front & rear, Carbon Monoxide Detector/Alarm, Center High-mount Stop Lamp, Courtesy Light(s) w/Wall Switch(es), Daytime Running Lamps, Escape Window, Ground Fault Interrupter, Interior Assist Bar(s), LPG Leak Detector/Alarm, Laminated Safety Glass Windshield, Lap Belts In Selected Areas, Smoke Detector/Alarm	S	S	S

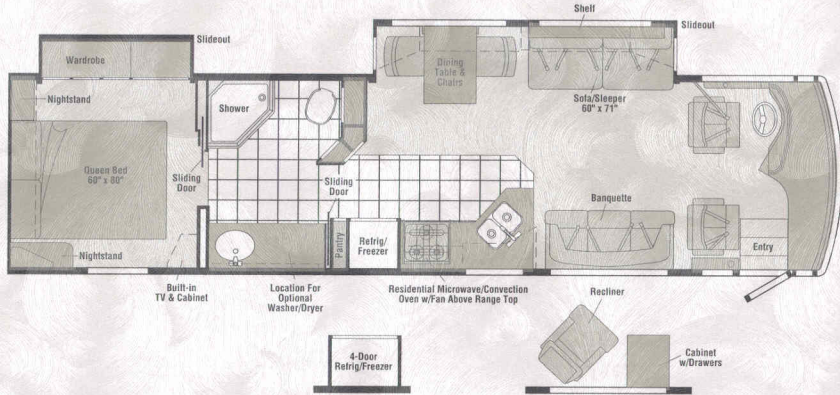
## WARRANTY

	36C	38K	40J
12-Month/15,000-Mile Basic Warranty, 36-Month/36,000-Mile Warranty On Structure,** 10-Year Limited Parts & Labor Warranty On Roof	S	S	S

- The height of each model is based on the curb weight of a typically equipped unit on the standard chassis. The actual height of your vehicle may vary by as much as 2" depending on chassis or equipment variations.
- Ultimate Advantage floorplans feature a wide-body design — over 96". In making your purchase decision, you should be aware that some states restrict access on some or all state roads to 96" in body width. Before making your purchase decision, you should confirm the road usage laws in the states of interest to you.
- Not all items available in combination. See dealer for details.
- Capacities shown are tank manufacturer's listed water capacity (W.C.). Actual filled LP capacity is 80% of listing due to overfilling prevention device on tank.
- Your motor coach's load capacity is designated by weight, not by volume, so you cannot necessarily use all available space when loading your motor coach.
- NA Not available
- † Electronic suspension air dump feature, actuated through the HWH leveling jacks touch pad.
- S Standard
- O Optional
- \*\* See your dealer for complete warranty documentation information.

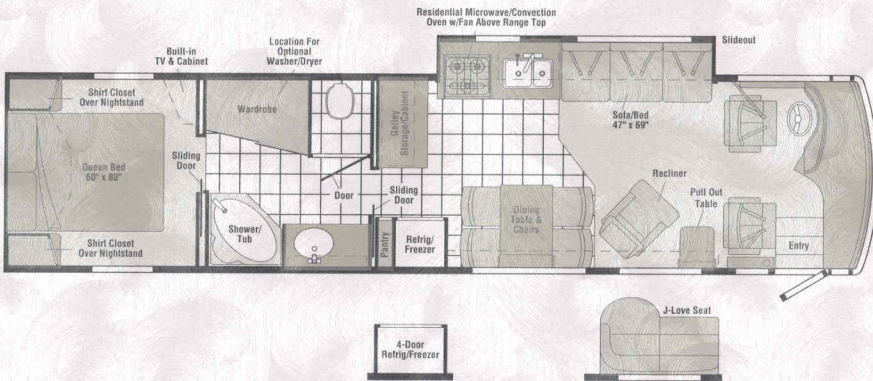
Winnebago Industries' continuing program of product improvement makes specifications, equipment, model availability and prices subject to change without notice. Comparisons to other motor homes are based on the most recent information available.

# 2001 FLOORPLANS



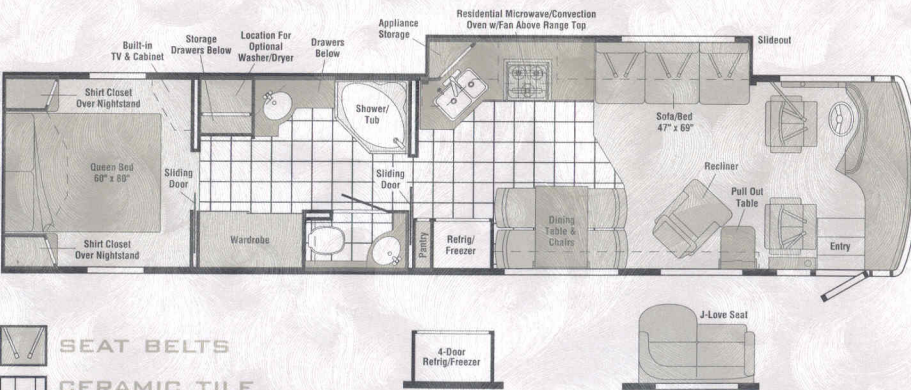
## 36C

This double slideout floorplan creates an abundance of living and storage space throughout the coach. The living area features both a sofa/sleeper and a three-cushion banquette. The front slideout incorporates both StoreMore and a flat-floor design.



## 38K

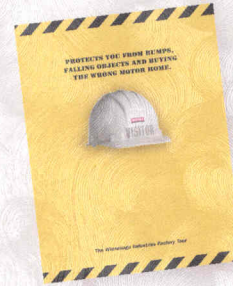
Highlights of this spacious floorplan include available leather furniture, a dining table with four chairs, a bath area with a private toilet and a large wardrobe with available washer/dryer.



## 40J

This coach features a large angled galley/sofa slideout for an incredibly spacious living area. The bathroom is loaded with luxuries like a private toilet area, a shower/tub with new brass fixtures and separate sinks. The large wardrobe provides expansive storage.

## READ THIS GUIDE.



To learn more about what separates our motor coaches from others, ask for this free guide next time you visit your Winnebago Industries dealer. It explains our superior manufacturing process. Use it to learn more about important safety and quality considerations as you shop for the motor coach that's best for you.

## WIT CLUB.



Membership in the Winnebago Itasca Travelers (WIT) Club is a great way to meet people and get even more enjoyment from your motor coach.

As an owner of a Winnebago Industries RV, you can join the Club and take advantage of some great services — like professional travel planning and mail forwarding — and participate in some great rallies and caravans. Call 1-800-643-4892 ext. 1 for more information.

[www.winnebagoind.com](http://www.winnebagoind.com)

For Sales and Service Information Contact:



Seat belts are your most important hookup. Always buckle up.

Note: Dimensions shown are for sleeping space only and dashed lines denote overhead storage areas.