

CLASS C MINI MOTORHOMES

GULF STREAM COACH

# BTouring BTRUISER

2006



*Cruise the Country in Style*





# BT TOURING CRUISER



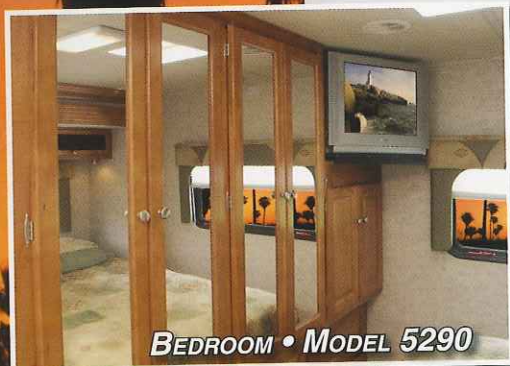
**GALLEY • MODEL 5290**

## GALLEY CONVENIENCE...

Our wide-open galley offers all the comforts of your kitchen at home. 3-burner high performance range; 2-door, 2-way refrigerator and large convection microwave, you will be able to prepare any of your family's favorite meals.



**BEDROOM • MODEL 5290**



**BEDROOM • MODEL 5290**

## BEDROOM...

Enormous wardrobe, abundant drawer storage, flat screen TV and beautiful decor create an inviting area for rest and relaxation.



**SUN ROOM • MODEL 5250 OPT., 5291 STD.**

Patent Pending

## SPACIOUS LIVING...

Open living areas that incorporate large slide rooms and residential style furniture make home away from home very comfortable.

Now available on the 5250, Gulf Stream's exclusive sun room slideout. This industry first innovative sun room gives you a wide range of sight from the curb side of the coach and opens up the coach to eliminate that boxed in feeling other minihomes give you.



**COMFORTABLE COCKPIT • MODEL 5270**

## Driver Convenience PACKAGE

### COMFORTABLE COCKPIT...

Make driving your BT Cruiser effortless with the addition of the driver convenience package. This option will give even the most timid driver confidence while backing up with reverse obstacle sensing and backup monitor. Keyless entry also included in this package facilitates easy entry and secured exit of your new motor home.

Driver Convenience Package Available on Ford Chassis Only.





Upgrade your already feature packed B Touring cruiser with the all new XL Package.

The XL Package gives you more high end features that are generally only found in high dollar Class A Motorhomes.

Package Includes: Solid Surface Kitchen Countertops, Fluorescent Lighting, Hard Rock Maple Cabinets, Vinyl Ceiling, G-sound Surround Sound Speakers with DVD Player, Burlled Woodgrain Dash and Steering Wheel. (Pictured with Optional Optima Leather Electric Sofa & Six Way Power Optima Leather Driver & Passenger Seats)

Not available on model 5211. Electric sofa N/A 5250 & 5291



# Gulf Stream Exclusive Features & Benefits

## SOLID HARDWOOD CABINETRY



**PREDRILLED  
HARDWOOD  
CONSTRUCTION**

Our residential style cabinets are constructed of solid hardwood doors and fronts that are predrilled and screwed then they are stained and top coated with a furniture grade finish that provides long lasting beauty and durability as well as adding strength and quietness to your motorhome.

## COMPETITOR'S CABINETRY

Other companies use wrapped cabinet fronts prone to peeling, fading and tearing. The softer composite wood used does not hold screws as well as hardwood resulting in loss of strength and squeaking. Discoloration will degrade the beauty and lower the value of the motorhome.

## GALVANIZED STEEL STORAGE COMPARTMENTS

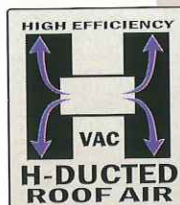


Seamless, carpeted, galvanized steel storage compartments safely cradle your valuables. Rust protective and foam sealed for extended life and a quiet ride.

## E-Z STORE PRIVACY

**NO MORE BUTTONS  
NO MORE HASSLE  
NO MORE WASTED SPACE**

Unique self storing privacy divider featuring quick and simple setup.



Dual metal H-Ducted air conditioning system with foil bubble wrapped insulation for improved climate control.

**Excellent Weathering** - Maintaining the vehicle's quality appearance enhances its resale value.

**Tear Resistance** - Unlike rubber roofing, Flexroofs hard abuse resistant finish resists tearing, a condition that can cause leaks and lead to expensive repair

**Low Maintenance** - Road grime can easily be removed with normal cleaning maintenance. Rubber chalking due to solar breakdown of the roof surface is eliminated, preserving the original appearance and resale value of the vehicle.

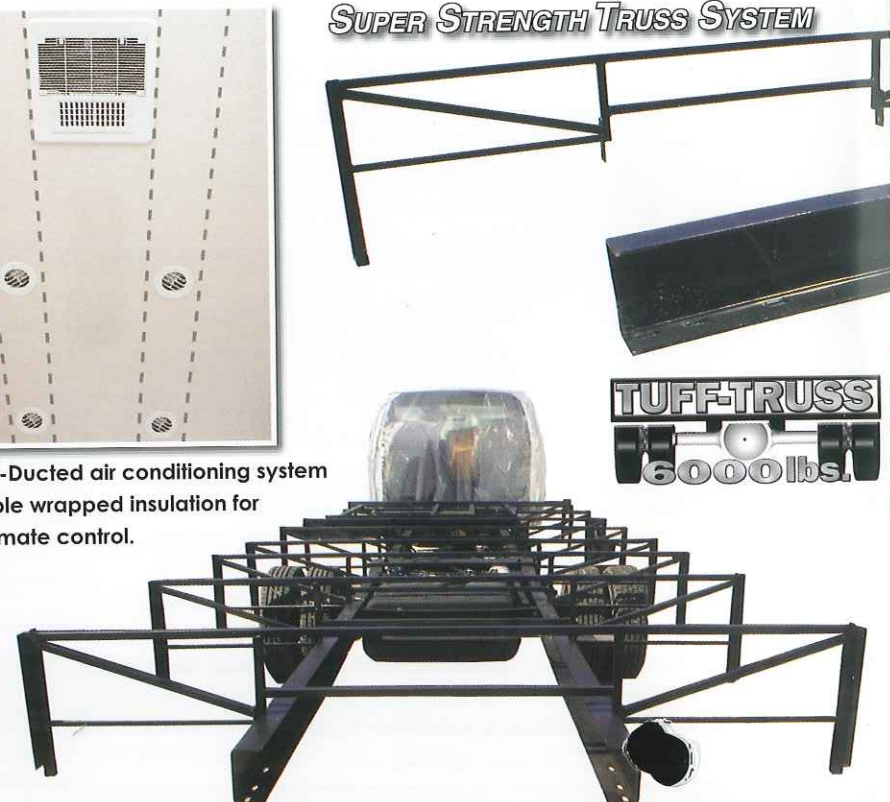
**Stain Resistance** - Fiberglass Flexroof is designed to resist staining and maintain its quality appearance.

**Structural Integrity** - Unlike conventional EPDM rubber roof membranes, Flexroof is a structural component of the roof system.

**Textured Fiberglass** - Helps dissipate heat and is slip resistant. In addition, it helps prevent tree limbs from tearing or scratching your roof.

**Seamless**  
Skid Resistant • Puncture Resistant  
**FIBERGLASS ROOF**

## SUPER STRENGTH TRUSS SYSTEM



**TUFF-TRUSS**  
6000lbs.





Unlike traditional plywood and foam seating Comfort Plus Seating features the strength of steel and the comfort of a sprung dinette cushion.



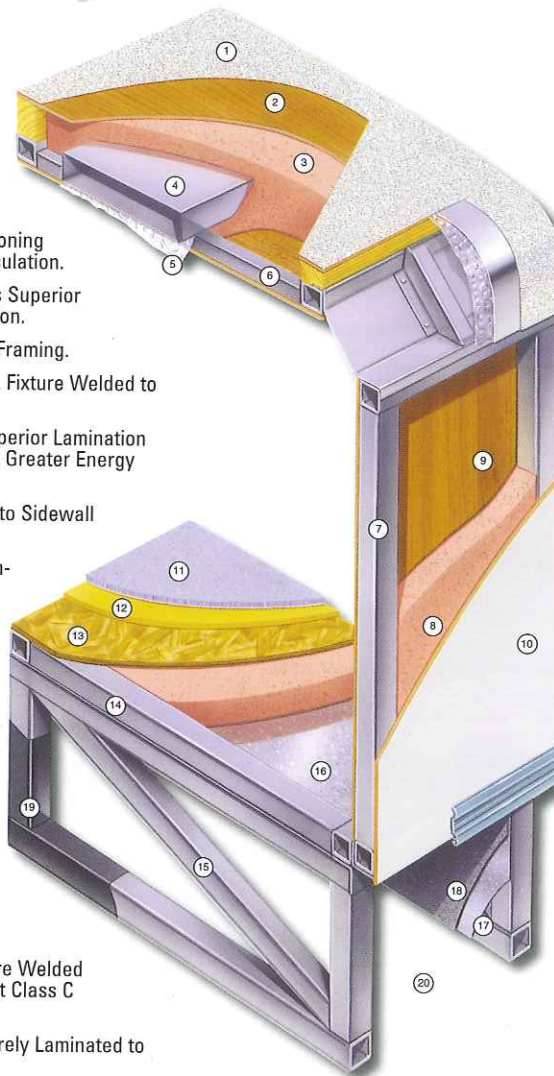
**6" C CHANNEL EXTENSION**

The super strength truss system is unmatched in the class C industry. The structural subfloor foundation begins by welding a network of integrated steel trusses to the chassis rail. Specifically designed to distribute and transfer the tremendous forces from the coach to the chassis rail these trusses are individually tested to withstand 6,000 pounds each.

When the chassis is stretched, Gulf Stream stands alone in the industry by using a full 6" C channel extension versus the traditional 4" or less. This practice adds to the strength of the foundation and offers peace of mind that towing is safe on an extension that is bolted to the chassis.

## Cradle of Strength

1. Seamless Fiberglass Roof For Greater Energy Efficiency and Dependability.
2. Luan Decking for Additional Strength.
3. Molded, High Density EPS (Expanded Polystyrene) Roof Brick Insulation - Provided Consistent Insulation Value as well as Superior Dimensional Rigidity.
4. One-Piece Formed Aluminum Air Conditioning Duct, Completely Surrounded By EPS Insulation.
5. Bubble-Wrapped Foil Insulation Provides Superior Insulation and Helps Prevent Condensation.
6. Rugged Welded Tubular Aluminum Roof Framing.
7. Rugged Heavy-Gauge Tubular Aluminum, Fixture Welded to Form the Sidewall Framing.
8. High-Density EPS Insulation Provides Superior Lamination and Bonding Characteristics and Insures Greater Energy Efficiency.
9. Interior Wall Panels Securely Laminated to Sidewall Framing.
10. "Super Slick" Fiberglass Exterior Vacuum-bond Laminated to Sidewall Framing for Lasting Beauty and Durability. (Option)
11. High-Quality Stain-Resistant Carpeting Available in Designer Coordinated Colors.
12. Extra-Thick Padding Under Carpet Provides Extra Comfort and Increases Carpet Durability.
13. Floor Decking Laminated to Steel Floor Structure Assures a Quiet, Long-Lasting Rigid Floor and comes with a 10-Year Warranty.
14. Heavy-Gauge Tubular Steel Framing, Fixture Welded for Extra Strength and Stability.
15. Heavy-gauge Tubular Steel Framed, Fixture Welded Floor Truss System Provides the Strongest Class C Foundation in the Industry.
16. Seamless Layer of Galvanized Steel Securely Laminated to the Steel Floor Framing.
17. Galvanized Steel Used to Form Each Storage & Holding Compartment.
18. Durable All-Weather Carpeting Completes Each Accessible Storage Compartment, Providing Extra Protection for Luggage and Valuables.
19. Rust-Prohibitive Paint Coating Applied to All Steel Framing Assures Corrosion and Rust Protection.
20. The Industry's Strongest, Most Spacious Exterior Storage Compartments.

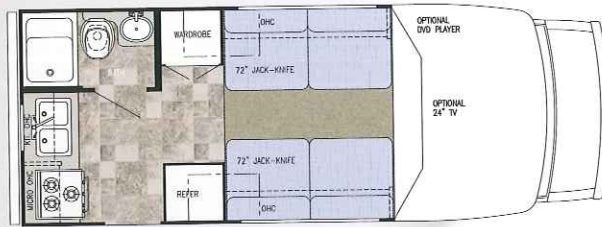


**TAKE THE TIME TO COMPARE...**  
and you will see the exceptional value of a Gulf Stream Coach



# BTouring CRUISER

MODEL 5211



## Specifications

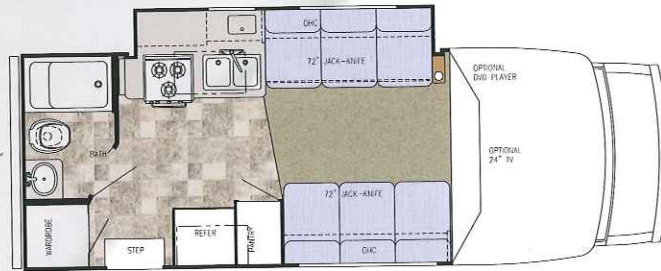
Chassis	Ford E-350
Engine	V-10, 6.8 Liter
GVWR	10,700
Wheelbase	138"
Length	22' 1"
Exterior Height	10' 4"
Exterior Width	96"
Interior Height	77"
Interior Width	91.25"

## Capacities

Fuel	37 Gal.
Black	30 Gal.
Grey	30 Gal.
Fresh	38 Gal.
LP Gas Tank	42 Lbs.
Furnace	25,000 btu.
Water Heater	6 Gal.
Basement Storage	11.8 cu. ft.

Optional: Chevy V-8 (gvwr 12,300), Dinette/Sofa, Barrel Chairs/Sofa

MODEL 5231



## Specifications

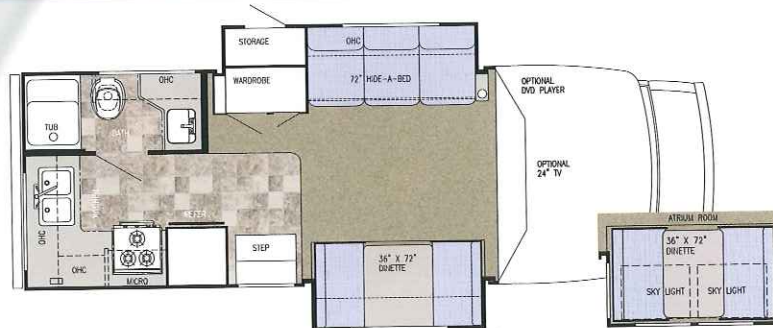
Chassis	Ford E-450
Engine	V-10, 6.8 Liter
GVWR	14,050
Wheelbase	168"
Length	24' 1"
Exterior Height	10' 4"
Exterior Width	96"
Interior Height	77"
Interior Width	91.25"

## Capacities

Fuel	55 Gal.
Black	30 Gal.
Grey	30 Gal.
Fresh	38 Gal.
LP Gas Tank	42 Lbs.
Furnace	25,000 btu.
Water Heater	6 Gal.
Basement Storage	9.7 cu. ft.

Optional: Dinette/Sofa

MODEL 5250



## Specifications

Chassis	Ford E-450
Engine	V-10, 6.8 Liter
GVWR	14,050
Wheelbase	176"
Length	25' 7"
Exterior Height	10' 4"
Exterior Width	96"
Interior Height	77"
Interior Width	91.25"

## Capacities

Fuel	55 Gal.
Black	30 Gal.
Grey	30 Gal.
Fresh	38 Gal.
LP Gas Tank	42 Lbs.
Furnace	25,000 btu.
Water Heater	6 Gal.
Basement Storage	26.1 cu. ft.

Optional: Sofa/Sofa, Atrium Sun Room Dinette



STANDARD EXTERIOR GRAPHICS



OPTIONAL PAINT AND SKIRT



OPTIONAL FULL PAINT GRAPHICS





MODEL 5270



**Specifications**

Chassis	Ford E-450
Engine	V-10, 6.8 Liter
GVWR	14,050
Wheelbase	196"
Length	28' 6"
Exterior Height	10' 4"
Exterior Width	96"
Interior Height	77"
Interior Width	91.25"

Optional: Dinette/Barrel Chair

**Capacities**

Fuel	55 Gal.
Black	38 Gal.
Grey	38 Gal.
Fresh	38 Gal.
LP Gas Tank	42 Lbs.
Furnace	25,000 btu.
Water Heater	6 Gal.
Basement Storage	51.4 cu. ft.

**Popular Options**

- TOURING PACKAGE UPGRADE (REQ) FIBERGLASS RUNNING BOARDS FIBERGLASS ROOF HARDWOOD STILES ELECTRIC STEP H-DUAL DUCT SYSTEM
- XL UPGRADE PACKAGE (TAN/GREEN ONLY) (NA 5211)
- DRIVER CONVENIENCE PACKAGE (Ford Only)
- 139" WB CHEVY, VORTEC 6.0 ENGINE,
- 35 GAL FUEL TANK (5211)
- FORD TURBO DIESEL CHASSIS (5231 5250 5270 5290)
- ATRIUM SLIDE ROOM (5250 5270)
- OUTSIDE SHOWER
- SPARE TIRE & CARRIER
- UPGRADED OAK DASH (NA CHEVY CHASSIS)
- ROLL GOODS THROUGHOUT
- HEATED HOLDING TANKS
- REAR LADDER
- 5000 LB HITCH W/PLUG
- AWNING
- SLICK FIBERGLASS EXTERIOR WALLS
- EXTERIOR PAINTED SKIRT AREA
- EXTERIOR PAINT W/SUPER SLICK EXTERIOR
- E-45 CHASSIS (NA 5211)
- HEATED & REMOTE MIRRORS
- LCD COLOR TV IN BEDROOM (5290 5291)
- FLAT SCREEN COLOR TV WITH REMOTE
- JENSON FOLD DOWN TRAY (5270)
- DVD PLAYER
- EMERGENCY START SWITCH
- FLUORESCENT LIGHT.
- PHONE JACK
- 4.0 ONAN GENERATOR
- 3.6 ONAN GENERATOR W/LP CONVERSION (REQUIRES DSL CHASSIS) (5231 5250 5270 5290)
- 4.0 GENERAC GENERATOR
- 6-WAY POWER OPTIMA D/P SEATS IPO 2-WAY CLOTH SEATS
- COMFORT BOOTH DINETTE IPO PS SOFA (5211 5231)
- DUAL BARREL CHAIRS IPO PS SOFA(5211)
- COMFORT BOOTH DINETTE IPO DS SOFA(5270)
- PS SOFA & DS SOFA IPO PS DINETTE & DS SOFA (5250)
- RANGE COVER (NA W/XL PKG)

MODEL 5290



**Specifications**

Chassis	Ford E-450
Engine	V-10, 6.8 Liter
GVWR	14,050
Wheelbase	208"
Length	30' 6"
Exterior Height	10' 4"
Exterior Width	96"
Interior Height	77"
Interior Width	91.25"

**Capacities**

Fuel	55 Gal.
Black	30 Gal.
Grey	38 Gal.
Fresh	38 Gal.
LP Gas Tank	42 Lbs.
Furnace	30,000 btu.
Water Heater	6 Gal.
Basement Storage	43.1 cu. ft.

MODEL 5291



**Specifications**

Chassis	Ford E-450
Engine	V-10, 6.8 Liter
GVWR	14,050
Wheelbase	208"
Length	30' 6"
Exterior Height	10' 4"
Exterior Width	96"
Interior Height	77"
Interior Width	91.25"

**Capacities**

Fuel	55 Gal.
Black	30 Gal.
Grey	38 Gal.
Fresh	38 Gal.
LP Gas Tank	42 Lbs.
Furnace	30,000 btu.
Water Heater	6 Gal.
Basement Storage	39.75 cu. ft.

**CHASSIS**

- 138" WB FORD E-35, V-10, 6.8 L ENG., 35 GAL FUEL TANK, POWER WINDOWS/LOCKS (5211)
- 158" WB, FORD E-45 V-10, 6.8L ENG., 55 GAL FUEL TANK & PWR. WINDOWS/LOCKS (NA 5211)

**Structural**

- ATRIUM SLIDE OUT ROOM (DINETTE) (5291)
- FIBERGLASS FRONT CAP & WINGS
- LAMINATED FLOOR STEEL FRAME FLOOR W/METAL UNDERBELLY

**Decor**

- ROLL GOOD IN KITCHEN, BATH & HALL; CARPET OTHER AREAS
- M & T DOORS
- FABRIC CEILING

**EXTERIOR**

- SLIDE OUT TOPPER (5231 5270)
- (2) SLIDE OUT TOPPERS (5250 5290)
- (3) SLIDE OUT TOPPERS (5291)
- REAR WINDOW (5250 5270 5290 5291)
- STAINLESS STEEL WHEEL INSERTS

**Bath**

- BI-FOLD SHOWER DOOR & SURROUND (NA 5290 5291)
- NEO-ANGLE GLASS SHOWER DOOR (5290 5291)

**HEATING & COOLING**

- 11,000 BTU LOW PROFILE DUCTED AC (5211 5231)
- 15,000 BTU LOW PROFILE DUCTED AC (5250 5270 5290 5291)

- 25,000 BTU FURNACE (NA 5290 5291)
- 30,000 BTU FURNACE (5290 5291)

**ELECTRICAL**

- CD PLAYER
- (3) PLATINUM LIGHTS IN BEDROOM (5270 5290 5291)
- MONITOR PANEL
- GENERATOR SWITCH & HOUR METER
- TV ANTENNA W/AMP & BOOST

**FURNISHINGS**

- D/S SOFA (NA 5250 5291)
- P/S SOFA (5211 5231)
- D/S H-A-B SOFA (5290 5291)
- P/S SINGLE BARREL CHAIR (5270)
- P/S DINETTE & D/S HIDE-A-BED SOFA (5250)

- P/S DINETTE & DS JACK KNIFE SOFA (5290)
- DINETTE BOOTH BED (PS) (5291)

**APPLIANCES**

- CONVECTION MICROWAVE W/3-BURNER TOP
- 6 GAL ELECTRONIC IGNITION WATER HEATER W/BY-PASS VALVE
- SM. 2-WAY DBL DOOR REFER (#2652)
- LP GAS TANK
- CARBON MONOXIDE DETECTOR
- LP LEAK DETECTOR

**POWER**

- AUXILLARY BATTERY
- CONVERTER W/CHARGER & AUTO CHANGE OVER
- BATTERY DISCONNECT

**Coach-Net®**

24 HR. EMERGENCY ROADSIDE ASSISTANCE

- One Year Coach-Net Membership
- Towing and Winching
- Flat Tire Change
- Mobile Mechanic
- Lockout
- Delivery of emergency Fluids
- Tire / Battery Boost