



Jay Flight SLX

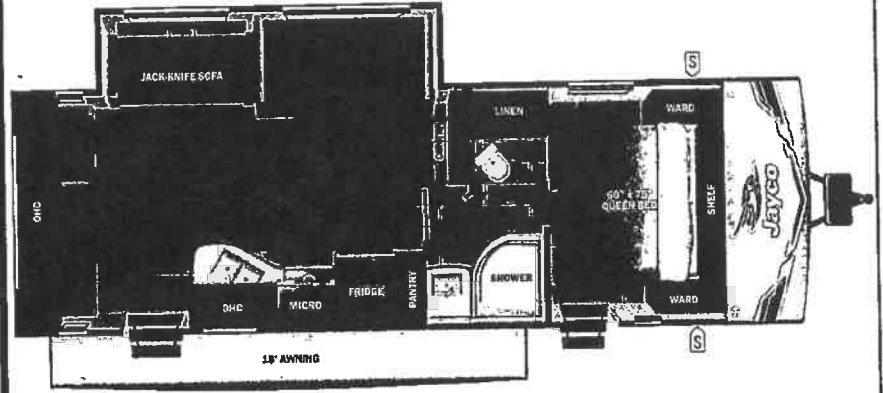


Serial #: 1UJBC0BP7S7ZY0086
 Model: 262RLSW JAY FLIGHT SLX TT

Model Year: 2025 Dealer Name: BLUE COMPASS RV
 3197 WILLOW CREEK RD
 PRESCOTT, AZ 86301
 USA

Manufacturer's Suggested Retail Price \$42,180.00

TOTAL AMOUNT DOES NOT INCLUDE STATE AND LOCAL TAXES OR LICENSE FEES. THE PRICE SHOWN ABOVE MAY OR MAY NOT BE REPRESENTATIVE OF THE ACTUAL SELLING PRICE OF SIMILAR RECREATIONAL VEHICLES IN YOUR AREA.



Standard Equipment

THE FOLLOWING ITEMS ARE STANDARD ON THIS MODEL AT NO EXTRA CHARGE

- STANDARD EXTERIOR EQUIPMENT**
- 30-amp 50 mva
 - 8,000 BTU wall mount A/C (single axle models)
 - Axles with electric, self-adjusting brakes and sway-lube hubs
 - Exterior cable TV hookup
 - Fully-integrated A-frame
 - Galvanized steel, impact resistant wheel wells
 - Large exterior downspouts
 - LP quick connect (outside grill prep)
 - Magnum Truss™ Roof System
 - Nitrogen filled radial tires
 - PVC roofing membrane (limited lifetime warranty)

- STANDARD INTERIOR EQUIPMENT**
- 300 lb. rated single bunk beds
 - 600 lb. rated double bunk beds
 - Digital TV antenna
 - Heavy-duty, 75 lb., full-extension, steel ball-bearing drawer guides
 - High rise kitchen faucet
 - Marine-grade toilet with foot flush
 - Plywood bed platforms
 - Queen mattresses
 - Residential-style hidden cabinet door hinges
 - Residential-style kitchen countertops
 - Shower curtain with curved shower track (select models)
 - Solid hardwood cabinet doors with screwed stile construction and hidden hinges
 - Vinyl flooring throughout
 - Wood-trimmed mirror in bathroom

- CUSTOMER VALUE PACKAGES (MANDATORY)**
- 8 cu. ft. 12V refrigerator
 - AM/FM/Bluetooth® stereo
 - Backup camera prep
 - Bathroom styling
 - Bathroom vent
 - Detachable power cord
 - Entry door with window and shade prep
 - Fitted bed sheet
 - Q20 dark tinted privacy windows
 - Key-Alarm™ entry and baggage doors
 - Large folding entry door grab handle
 - LED interior and exterior lights
 - Marine grade exterior stereo speakers
 - Microwave oven
 - On-demand tankless water heater
 - Power awning with LED lights
 - Range hood
 - Solid Sleep® entry steps
 - Spers tire with cover
 - Stabilizer jacks
 - Tub/tower surround
 - Window shades

Optional Equipment

OPTIONAL EQUIPMENT INSTALLED ON THIS VEHICLE BY MANUFACTURER

Base price	35,406.00
USA STANDARDS	n/c
CUSTOMER VALUE PACKAGE	5,250.00
OVERLANDER SOLAR PACKAGE	593.00
15,000 BTU ROOF MOUNTED AC	300.00
NO 2ND AC	n/c
50 AMP SERVICE	443.00
METAL SIDEWALL	n/c
ENCLOSED UNDERBELLY	188.00
STANDARD RADIAL TIRES	n/c

UNIT TOTAL **42,180.00**

DEALER INSTALLED OPTIONS †

Freight	2,124.15
TOTAL MSRP	44,304.15

UVW
6225 lbs

Sleeps
3

Length
31' 0.75"

DIMENSIONS

Exterior height:.....127.00"
 Exterior width:.....96.00"

WEIGHTS

GVWR:.....7600
 GAWR (front):.....4400
 GAWR (rear):.....4400

Approx. Gross Cargo Carrying Capacity (GOCC):.....1375

CAPACITIES

Fresh water tank (gals.):...80.00
 Gray water tank (gals.):...40.00
 Black water/toilet tank (gals.):...40.00
 Propane (lbs.):.....40
 Propane (gals.):.....9
 Water heater (gals.):.....0.25

TIRES

Tire size (front):.....ST225/75R15E
 Tire size (mid):.....
 Tire size (rear):.....ST225/75R15E
 Tire size (spare):.....ST225/75R15E

SEATING & SLEEPING



Some dimensions may be rounded and may vary from the actual dimensions
 Weights may be estimated calculations and may vary from the actual weight - refer to the vehicle weight labels for actual weights
 Finishes, features and specifications are subject to change without notice

STOCK#: T96407
 LICENSE FEE: 708.62