



Jay Flight SLX



Serial #: 1UJBC0BL1S7ZZ0142
 Model: 210QBW JAY FLIGHT SLX TT

Model Year: 2025 Dealer Name: BLUE COMPASS RV
 3197 WILLOW CREEK RD
 PRESCOTT, AZ 86301
 USA

Standard Equipment

Optional Equipment

THE FOLLOWING ITEMS ARE STANDARD ON THIS MODEL AT NO EXTRA CHARGE

OPTIONAL EQUIPMENT INSTALLED ON THIS VEHICLE BY MANUFACTURER

STANDARD EXTERIOR EQUIPMENT
 30 amp service
 8,000 BTU wall mount A/C (single axle models)
 Axles with electric, self-adjusting brakes and 151-tube hubs
 Exterior cable TV hookup
 Fully integrated A-frame
 Galvanized-steel, impact resistant wheel wells
 Large exterior downspouts
 LP quick connect (outside grill prep)
 Magnum Truss™ Roof System
 Nitrogen filled radial tires
 PVC roofing membrane (limited lifetime warranty)

STANDARD INTERIOR EQUIPMENT
 - 300 lb. raised single bunk beds
 - 600 lb. raised double bunk beds
 - Digital TV antenna
 - Heavy-duty, 75 lb., full-extension, steel ball-bearing drawer guides
 - High rise kitchen faucet
 - Marine-grade toilet with foot flush
 - Plywood bed platforms
 - Queen mattress
 - Residential-style hidden cabinet door hinges
 - Residential-style kitchen countertops
 - Shower curtain with curved shower track (select models)
 - Solid hardwood cabinet doors with screwed stile construction and hidden hinges
 - Vinyl flooring throughout
 - Wood-impregnated mirror in bathroom

CUSTOMER VALUE PACKAGE (MANDATORY)
 - 8 cu. ft. 12V refrigerator
 - AM/FM/Bluetooth® stereo
 - Backup camera prep
 - Bathroom skylight
 - Bathroom vent
 - Detachable power cord
 - Entry door with window and shade prep
 - Fitted bed sheet
 - G29 dark tinted privacy windows
 - Keyed-Alike™ entry and baggage doors
 - Large locking entry door grab handle
 - LED interior and exterior lights
 - Marine grade exterior stereo speakers
 - Microwave oven
 - On-demand tankless water heater
 - Power awning with LED lights
 - Range hood
 - Solid Step® entry steps
 - Spare tire with cover
 - Stabilizer jacks
 - Tub/shower surround
 - Window shades

Base price 27,906.00
 USA STANDARDS n/c
 CUSTOMER VALUE PACKAGE 5,250.00
 OVERLANDER SOLAR PACKAGE 593.00
 13,500 BTU ROOF MOUNTED AC n/c
 METAL SIDEWALL n/c
 ENCLOSED UNDERBELLY 188.00
 STANDARD RADIAL TIRES n/c

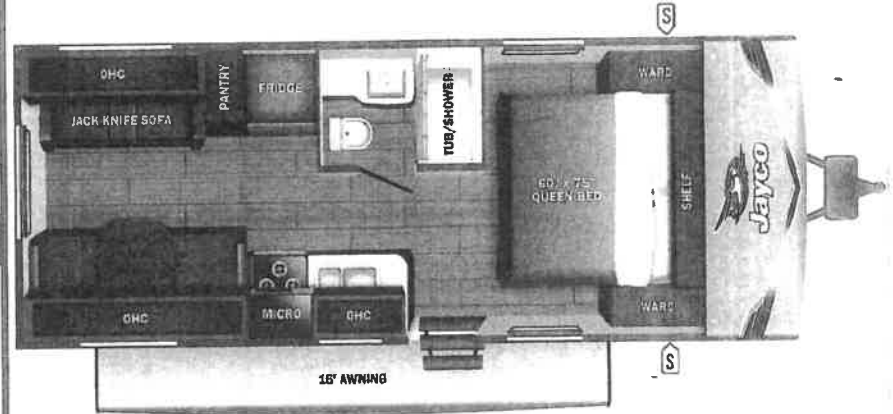
UNIT TOTAL **33,937.00**

DEALER INSTALLED OPTIONS

FREIGHT 2,165.80
 TOTAL MSRP 36,102.80

Manufacturer's Suggested Retail Price \$33,937.00

TOTAL AMOUNT DOES NOT INCLUDE STATE AND LOCAL TAXES OR LICENSE FEES. THE PRICE SHOWN ABOVE MAY OR MAY NOT BE REPRESENTATIVE OF THE ACTUAL SELLING PRICE OF SIMILAR RECREATIONAL VEHICLES IN YOUR AREA.



UVW
 4323 lbs

Sleeps
 4

Length
 25' 7.75"

DIMENSIONS

Exterior height: 125.50"
 Exterior width: 96.00"
WEIGHTS
 GVWR: 6000
 GAWR (front): 3500
 GAWR (rear): 3500
 Approx. Gross Cargo Carrying Capacity (GCCCL): 1677
TIRES
 Tire size (front): ST205/75R14D
 Tire size (mid):
 Tire size (rear): ST205/75R14D
 Tire size (spare): ST205/75R14D

CAPACITIES

Fresh water tank (gals.): 84.00
 Gray water tank (gals.): 40.00
 Black water/toilet tank (gals.): 40.00
 Propane (lbs.): 40
 Propane (gals.): 9
 Water heater (gals.): 0.25

SEATING & SLEEPING

Some dimensions may be rounded and may vary from the actual dimensions
 Weights may be estimated calculations and may vary from the actual weight - refer to the vehicle weight labels for actual weights
 Floorplans, features and specifications are subject to change without notice.



STOCK#: 795722
 LICENSE FEE: 570.14