



Eagle HT

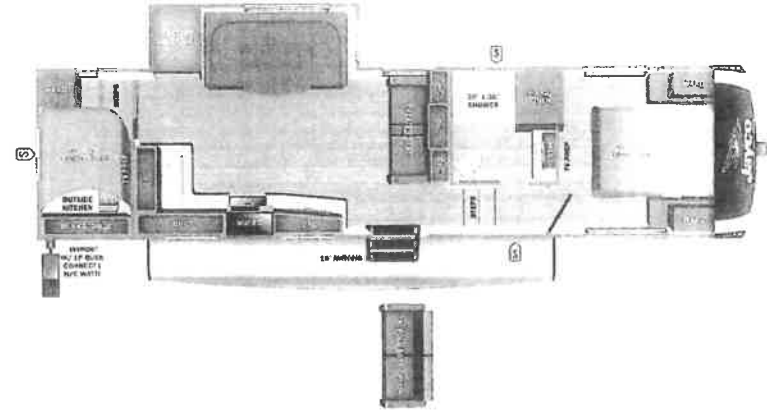


Serial #: 1UJCA0BS5R1BS0363
 Model: 29DDB EAGLE HT FW

Model Year: 2024 Dealer Name: AFFINITY RV
 3197 WILLOW CREEK RD
 PRESCOTT, AZ 86301
 USA

Manufacturer's Suggested Retail Price \$74,941.00

TOTAL AMOUNT DOES NOT INCLUDE STATE AND LOCAL TAXES OR LICENSE FEES. THE PRICE SHOWN ABOVE MAY OR MAY NOT BE REPRESENTATIVE OF THE ACTUAL SELLING PRICE OF SIMILAR RECREATIONAL VEHICLES IN YOUR AREA.



Standard Equipment

Optional Equipment

THE FOLLOWING ITEMS ARE STANDARD ON THIS MODEL AT NO EXTRA CHARGE

OPTIONAL EQUIPMENT INSTALLED ON THIS VEHICLE BY MANUFACTURER

- EXTERIOR**
- Stronghold VBL™ walls (laminated sidewalls, rear walls and slide out walls)
 - 5 in. Magnum Truss™ Roof System with Alpha roof membrane system with limited lifetime warranty
 - Climate Shields™ zero-degree tested weather protection
 - Fully enclosed and heated underbelly (ducted)
 - 35,000 BTU furnace
 - Double layer fiberglass batt insulation in ceiling and floor
 - Double sided radiant barrier insulation (roof, floor, and behind cap)
 - PEX plumbing
 - HELIX Cooling System™ (industry exclusive)
 - Jayco exclusive insulated dual duct design
 - Directional and closable A/C vents
 - Larger return air vents with user accessible filters
 - Automotive style painted front cap with max turn radius

- INTERIOR**
- Solid hardwood slide fascia
 - Handcrafted and glazed door/drawer fronts (new sizes)
 - 76 lb full extension drawer guides
 - 5/8 in. tongue-and-groove plywood flooring
 - Residential vinyl flooring throughout
 - Tri-fold hide-a-bed sofa with residential memory foam sleep surface (select models)
 - Theater seating (select models)
 - Stainless steel kitchen sink
 - Matte black kitchen faucet with pull-out sprayer
 - USB charging ports (multiple locations throughout)
 - Extra 120V power outlets in kitchen and slide rooms (where applicable)
 - Gas-strutted under-bed storage
 - Inverter pre-wire (multiple locations)
 - C.P.A.P. trapped bedroom
 - Bathroom skylight
 - Porcelain toilet flush toilet
 - 2 place high gloss bathroom surround
 - Bedroom TV drop

- Auto-grade vinyl graphics
- LED exterior lighting package
- 50-amp detachable power cord
- Dual 30 lb. LP bottles
- Metal slim latch baggage doors
- Digital TV antenna with Wi-Fi prep
- Dual channel exterior speaker
- Nautique 2.5 water connections
- Quick connect water connections (door side hot/cold and off door side cold only)
- Black tank flush
- Independent satellite and whole coach cable hookups
- Nitrogen filled undermount spare tire (15 in.)
- LP quick connect for gas griddle (next to JayPort)
- Slide top/bottom prep
- 1.5 in fresh water drain valve
- Commercial grade rubber flooring in pass through area
- Factory installed roof ladder
- Galvanized steel coated outside kitchens

- CUSTOMER VALUE PACKAGE (Mandatory)**
- 15K BTU Whisper Quiet™ A/C and bedroom A/C prep
 - 50-amp service with dual A/C ducts
 - Electric patio awning with integrated LED lights
 - 80K on demand water heater with mixing tank
 - Custom machined aluminum rim
 - Rear 2 in. towing receiver with 4 pin connector
 - Keyed-Alike™ lock system (single key for all doorlocks)
 - Security monitor prep (rear)
 - Hidden hinges on cabinet doors
 - Upgraded friction hinge entrance door
 - 4K Ultra LED HD Smart TV in living room (50 in., 43 in., 39 in.)
 - GE black and stainless 17 in. range with edge to edge grates
 - GE microwave

- LUXURY PACKAGE (Mandatory)**
- Electric auto-leveling
 - GE 10 cu ft 12V refrigerator
 - Blackout roller shades with reflective side throughout
 - Residential style glass shower door
 - JayPort 2 in. mount (for outside accessories)
 - XL grab handle

- 4 STAR HANDLING PACKAGE (Mandatory)**
- Goodyear® Endurance® tires (load range E)
 - Dexter® Axles with Non-R Adjust® brakes and E-Z Lube® hubs
 - MORryde® CRE-3000™ rubberized suspension
 - Wet bolt fasteners, bronze bushings

Base price	55,506.00
USA STANDARDS	n/c
CUSTOMER VALUE PACKAGE	6,263.00
LUXURY PACKAGE	7,493.00
FOUR STAR HANDLING PACKAGE	3,743.00
OVERLANDER I SOLAR PACKAGE	893.00
2ND 15,000 AC IN BEDROOM	1,043.00
THEATER SEATING SOFA	n/c

UNIT TOTAL **74,941.00**

DEALER INSTALLED OPTIONS:

FREIGHT/PREP	5,277.20
TOTAL MSRP	80,218.20

UVW
9306 lbs

Sleeps

Length
34' 6.75"

DIMENSIONS

Exterior height: 136.25"
 Exterior width: 96.75"

WEIGHTS

GVWR: 10750
 GAWR (front): 5145
 GAWR (rear): 5145
 Approx. Gross Cargo Carrying Capacity (GCCC): 1444

CAPACITIES

Fresh water tank (gals.): 52.00
 Gray water tank (gals.): 82.00
 Black water/toilet tank (gals.): 45.00
 Propane (lbs.): 60
 Propane (gals.): 14
 Water heater (gals.): 10.19

SEATING & SLEEPING

TIRES

Tire size (front): ST225/75R15E
 Tire size (mid):
 Tire size (rear): ST225/75R15E
 Tire size (spare): ST225/75R15E

Some dimensions may be rounded and may vary from the actual dimensions

***Weights may be estimated calculations and may vary from the actual weight

- refer to the vehicle weight labels for actual weights***

Propane features and specifications are subject to change without notice



STOCK#: 1050363
 LICENSE FEE: 932.50