



Jay Flight SLX



Serial #: 1UJBC0BL7R7ZZ0480
 Model: 210QBW JAY FLIGHT SLX TT

Model Year: 2024 Dealer Name: AFFINITY RV
 3197 WILLOW CREEK RD
 PRESCOTT, AZ 86301
 USA

Standard Equipment

THE FOLLOWING ITEMS ARE STANDARD ON THIS MODEL
 AT NO EXTRA CHARGE

- EXTERIOR**
- Axles with electric, self-adjusting brakes and easy-lube hubs
 - Fully-integrated A-frame
 - Galvanized-steel, impact resistant wheel wells
 - Magnum Truss™ Roof System
 - PVC roofing membrane (limited lifetime warranty)
 - Large exterior downspouts
 - 30-amp service
 - Exterior cable TV hookup
 - LP truck connected (outside grill prep)
 - 5,000 BTU wall mount AC (single axle models)
 - Nitrogen filled radial tires

- INTERIOR**
- Solid hardwood cabinet doors with screwed stile construction and hidden hinges
 - Vinyl flooring throughout
 - Digital TV antenna
 - Residential-style kitchen countertops
 - High rise kitchen faucet
 - Heavy-duty, 75 lb., full-extension, steel ball-bearing drawer guides
 - Plywood bed platforms
 - Queen mattress (select models)
 - 300 lb. rated single bunk beds
 - 600 lb. rated double bunk beds
 - Marine-grade toilet with foot flush
 - Shower curtain with curved shower track (select models)
 - Wood-trimmed mirror in bathroom

- CUSTOMER VALUE PACKAGE (Mandatory)**
- Solid Steps® entry steps
 - On-demand tankless water heater
 - Power awning with LED lights
 - Marine grade exterior stereo speakers
 - Stabilizer jacks
 - Spare tire with cover
 - Keyed-Alike™ entry and baggage doors
 - Large folding entry door grab handle
 - Window shades
 - Range hood
 - 8 cu. ft. 12V refrigerator
 - Microwave oven
 - Fitted bed sheet (NA 154BH)
 - Bathroom skylight
 - Tub/shower surround
 - AM/FM Bluetooth® stereo
 - Backup camera prep
 - Detachable power cord
 - Bathroom vent
 - Entry door with window and shade prep
 - G20 dark tinted privacy windows
 - LED interior and exterior lights

Optional Equipment

OPTIONAL EQUIPMENT INSTALLED ON THIS VEHICLE
 BY MANUFACTURER

Base price	29,406.00
USA STANDARDS	n/c
CUSTOMER VALUE PACKAGE	5,250.00
OVERLANDER SOLAR PACKAGE	593.00
13,500 BTU ROOF MOUNTED AC	n/c
METAL SIDEWALL ENCLOSED UNDERBELLY	n/c
STANDARD RADIAL TIRES	189.00
	n/c

UNIT TOTAL **35,437.00**

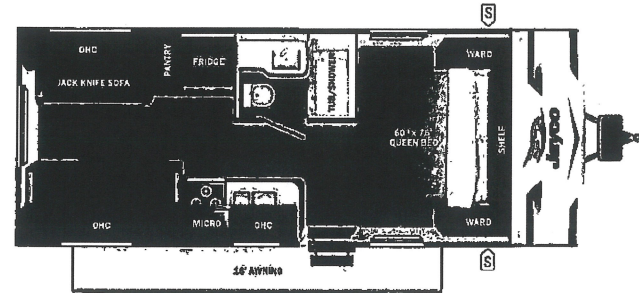
DEALER INSTALLED OPTIONS

Freight/Prep	2,640.80
TOTAL MSRP	38,077.80

STOCK#: 1020480
 LICENSE FEE: 494.02

Manufacturer's Suggested Retail Price \$35,437.00

TOTAL AMOUNT DOES NOT INCLUDE STATE AND LOCAL TAXES OR LICENSE FEES. THE PRICE SHOWN ABOVE MAY OR MAY NOT BE REPRESENTATIVE OF THE ACTUAL SELLING PRICE OF SIMILAR RECREATIONAL VEHICLES IN YOUR AREA.



UVW 4490 lbs **Sleeps** **Length** 25' 10"

DIMENSIONS

Exterior height:	126.00"
Exterior width:	96.00"

WEIGHTS

GVWR:	6000
GAWR (front):	3500
GAWR (rear):	3500
Approx. Gross Cargo Carrying Capacity (GCC):	1510

CAPACITIES

Fresh water tank (gals.):	84.00
Gray water tank (gals.):	40.00
Black water/toilet tank (gals.):	33.00
Propane (lbs.):	40
Propane (gals.):	9
Water heater (gals.):	0.00

SEATING & SLEEPING

TIRES

Tire size (front):	ST205/75R14D
Tire size (mid):	
Tire size (rear):	ST205/75R14D
Tire size (spare):	ST205/75R14D

Some dimensions may be rounded and may vary from the actual dimensions
 Weights may be estimated calculations and may vary from the actual weight - refer to the vehicle weight labels for actual weights
 Floorplans, features and specifications are subject to change without notice.

