



Eagle



Serial #: 1UJCA0BS4R1PP0055
Model: 29.5BHDS EAGLE FW

Model Year: 2024 Dealer Name: AFFINITY RV

3197 WILLOW CREEK RD
PRESCOTT, AZ 86301
USA

Standard Equipment

Optional Equipment

THE FOLLOWING ITEMS ARE STANDARD ON THIS MODEL AT NO EXTRA CHARGE

OPTIONAL EQUIPMENT INSTALLED ON THIS VEHICLE BY MANUFACTURER

- EXTERIOR**
- Stronghold VBL™ walls (laminated sidewalls, rear walls and slide out walls)
 - 5 in. Magnum Truss™ Roof System with limited lifetime warranty
 - Climate Shield™ zero-degree tested weather protection
 - Fully enclosed and heated underbelly (ducted)
 - 35,000 BTU output furnace
 - Double layer fiberglass batt insulation in ceiling and floor
 - Double sided radiant barrier insulation (roof, floor and behind cap)
 - PEX plumbing
 - HELIX Cooling System™ (industry exclusive)
 - Jayco exclusive insulated dual duct design
 - Directional and closeable A/C vents
 - Larger return air vents with user accessible filters
 - JaySMART™ (Safety Markers And Reverse Travel)
 - LED lighting (patented)
 - Automotive style front cap with max turn radius (painted on select models)
 - Auto-grade vinyl graphics
 - LED exterior lighting package
 - 50-amp detachable power cord
 - Dual 30 lb. LP bottles
 - Metal slam latch baggage doors
 - Digital TV antenna with Wi-Fi prep
 - Dual channel exterior speaker
 - Nautilus 2.5 water connections
 - Black tank flush
 - Independent satellite and whole coach cable hookups
 - Battery disconnect in pass through area
 - Nitrogen filled undermount spare tire (model option varies 15 in. or 16 in.)
 - LP quick connect for gas griddle (next to JayPort)
 - Slide topper/awning prep
 - 1.5 in. fresh water drain valve
 - 96 in. LED lighting in pass through area with 3-way switches
 - Commercial grade rubber flooring in pass through area
 - Factory installed roof ladder
 - Galvalume® steel coated outside kitchens
 - Overlander 1 Solar Package (1) 200W panels, MPPT 30-amp solar controller
 - Quick connect water connections (door side hot/cold and aft door side cold only)

- INTERIOR**
- Solid hardwood slide fascia
 - Handcrafted and glazed door/drawer fronts (new sizes)
 - 75 lb. full extension drawer guides
 - 5/8 in. tongue and groove plywood flooring
 - Residential vinyl flooring throughout
 - LED lights with dimmer switches and motion activated (throughout interior)
 - Tri-fold hide-a-bed sofa with residential memory foam sleep surface (select models)
 - Theater seating (select models)
 - Stainless steel kitchen sink
 - Matte black kitchen faucet with pull-out sprayer
 - USB charging ports (multiple locations throughout)
 - Extra 120V power outlets in kitchen and slide rooms (where applicable)
 - 90 in. x 92 in. residential quilted bedspread (both queen and king mattresses)
 - Gas-strutted under-bed storage
 - Inverter pre-wire (multiple locations)
 - C P A P prepbed bedroom
 - Bathroom skylight
 - LED backlit medicine cabinet with custom framed mirror
 - Porcelain foot flush toilet
 - 2-piece high gloss bathroom surround
 - Bedroom TV prep
 - Furniture cup holder tables (1 pair)
 - Residential 80 in. x 80 in. queen size mattress

- CUSTOMER VALUE PACKAGE (Mandatory)**
- MORfyde® StepAbove™ entrance steps (main entrance) with blue LED light
 - 15K BTU Whisper Quiet!™ A/C and bedroom A/C prep
 - 50-amp service with dual A/C ducts
 - Electric patio awning with integrated dimmable LED lights
 - 60K on-demand water heater with mixing tank
 - Custom machined aluminum rims
 - Rear 2 in. towing receiver with 4 pin connector
 - Keyed-Alike™ lock system (single key for all doorlocks)
 - Security monitor prep (rear, sides and entrance door)
 - Hidden hinges on cabinet doors
 - Upgraded friction hinge entrance door
 - 4k 43 in. ultra LED HD Smart TV in living room
 - JBL Aura Bar 12V with Bluetooth® and dual HDMI (dual zone)
 - GE black and stainless 21 in. range with edge to edge grates
 - GE 30 in. over-the-range black and stainless microwave with exhaust fan
 - Rain-proof bathroom power vent

- LUXURY PACKAGE (Mandatory)**
- JAYCOMMAND® Smart RV system (Pro tablet)
 - LED fireplace with 5,000 BTU electric space heater (select models)
 - GE 10 cu ft 12V refrigerator
 - Blackout roller shades with reflective side throughout
 - Washer/dryer prep (select models)
 - TPMS (Tire Pressure Monitoring System) in-stem monitoring
 - Electric auto-leveling
 - JayPort 2 in. mount (for outside accessories)
 - MORfyde Safe-T-Rail grab handle
 - Overlander 1 Solar Package (200W panel and 30-amp solar controller)
 - Residential style glass shower door

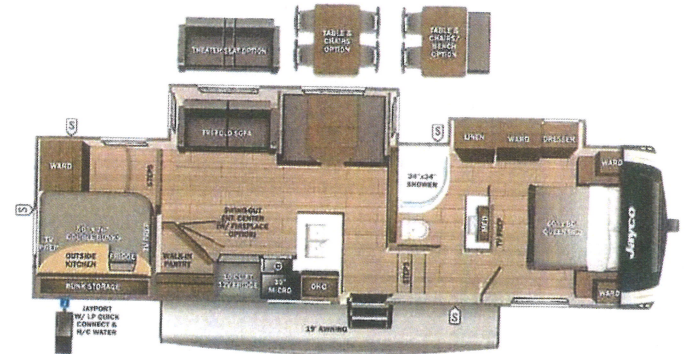
UNIT TOTAL **94,446.00**

DEALER INSTALLED OPTIONS
FREIGHT/PREP **5,277.20**
TOTAL MSRP **\$99,723.20**

Manufacturer's Suggested Retail Price

\$99,723.20

TOTAL AMOUNT DOES NOT INCLUDE STATE AND LOCAL TAXES OR LICENSE FEES. THE PRICE SHOWN ABOVE MAY OR MAY NOT BE REPRESENTATIVE OF THE ACTUAL SELLING PRICE OF SIMILAR RECREATIONAL VEHICLES IN YOUR AREA.



UVW
9861 lbs

Sleeps

Length
34' 6.63"

DIMENSIONS

- Exterior height: 158.00"
- Exterior width: 96.50"
- GVWR: 11500
- GAWR (front): 5145
- GAWR (rear): 5145
- Approx. Gross Cargo Carrying Capacity (GCCC): 1639

CAPACITIES

- Fresh water tank (gals.): 81.00
- Gray water tank (gals.): 82.00
- Black water/toilet tank (gals.): 45.00
- Propane (lbs.): .60
- Propane (gals.): .14
- Water heater (gals.): 0.19

TIRES

- Tire size (front): ST225/75R15E
- Tire size (mid):
- Tire size (rear): ST225/75R15E
- Tire size (spare): ST225/75R15E

Some dimensions may be rounded and may vary from the actual dimensions
Weights may be estimated calculations and may vary from the actual weight - refer to the vehicle weight labels for actual weights
Floorplans, features and specifications are subject to change without notice.



STOCK# 10P0055
LICENSE FEE: 1212.17