

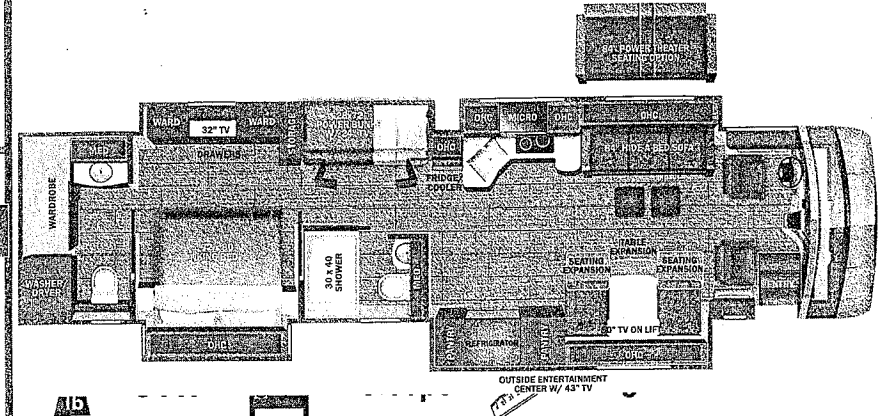
186-m74879

Aspire



Serial #: 1JSMEACV0R13R8059
 Model: 44R ASPIRE MHA
 VIN#: 4VZAU1D18RC094947
 Model Year: 2024 Dealer Name: BLUE COMPASS RV
 320 N LOOP 289
 LUBBOCK, TX 79403
 USA

Manufacturer's Suggested Retail Price \$666,256.00



Standard Equipment

Optional Equipment

THE FOLLOWING ITEMS ARE STANDARD ON THIS MODEL AT NO EXTRA CHARGE

OPTIONAL EQUIPMENT INSTALLED ON THIS VEHICLE BY MANUFACTURER

STANDARD EXTERIOR EQUIPMENT

- Spartan® K2 raised-rail chassis
- Cummins® L9 turbocharged 450 HP engine with 1,250 lb.-ft. torque at 1,400 RPM
- Allison® 3,000 MH 6-speed transmission
- Slide-mounted, parallel-airflow radiator
- 1,000W engine block heater
- Three-stage engine brake
- Reyco® Granning® front axle with independent front suspension - 17,000 lb. rating
- Meritor rear axle - 20,000 lb. rating (Dana® rear axle- 24,000 lb. rating on 40P)
- Tag axle with one-touch manual air dump - 12,000 lb. rating (N/A 40P)
- ABS disc brakes on front axle, drum brakes on drive and tag axle (ABS disc brakes on front and rear axle on 40P)
- 4.88 rear axle ratio (4.78 on 40P)
- Michelin® X Coach Z tires (315/80R22.5 in front, 295/80R22.5 in rear)
- Bilstein® 46mm shocks
- Tire pressure monitoring system (TPMS) with temperature monitoring
- Equalizer™ hydraulic automatic coach leveling
- Valid™ Truline air leveling system with auxiliary air compressor
- 150 gal. fuel tank with dual fills (100 gal. on 40P)
- 15 gal. DEF tank with dual fills (single fill on 40P, 44D, 44R)
- Dana® 10,000W diesel generator, with automatic start, on slide-out tray
- 3,000W pure sine wave inverter
- (2) L16 AGM batteries (6V/390 amp hrs. ea.)
- (2) 200W solar panels
- 30 amp power cord on electric powered reel
- Bergstrom dual-zone HVAC system
- (3) 15,000 BTU A/C units with heat pumps and condensation drain system
- Aqua-Hot® 4000 hydronic water and heating system with in-floor heat throughout
- Sani-Con® macerator holding tank dump system with manual gate valves and manual backup
- Hot and cold water hook-up in front cap area with 30 ft. quick-disconnect hose
- Water hose with electric reel
- Dual roof-mounted Girard® Vision dual-pitched patio awnings with LED lights
- Girard® power entrance door awning with LED lights
- Girard® Ultra slideout awnings
- Girard® window awnings
- Lit grab handle with doorbell and keypad system for keyless entry
- 43 in. Samsung® 4K UHD Smart TV with tilt, swivel, and extend adjustment
- JBL® radio and speakers with USB port and receptacle
- Automatic LED low beam headlights, halogen high beam headlights and fog lights
- LED accent lights under all slideout rooms
- Starlink satellite internet system
- Winegard® TRAVLER satellite dish DIRECTV® - standard with USA option
- Winegard® TRAVLER Pro satellite dish Shaw TV - standard with CSA option
- Winegard® Rayzar Z1 TV antenna
- Winegard® WiFiRange™ Wi-Fi extender
- Slideout basement storage tray

STANDARD INTERIOR EQUIPMENT

- Valid™ 15 in. digital dash with quad core graphics processor, on-board diagnostics and ability to display traditional instrument cluster, 360° camera system or GPS navigation
- Ramco 360° HD digital camera system
- Valid™ infotainment system with 15 in. touchscreen, Sygic navigation, Bluetooth®, Sirius XM™ and AM/FM tuner, integrated camera control and house mode whole-coach audio distribution
- 4.3 in. infotainment control touchscreen in passenger console
- E-Z Steer™ adjustable power steering assist
- Leather steering wheel with integrated controls for screen selection, instrument cluster navigation, media source selection, cruise, wipers and Bluetooth® phone functionality
- Manual tilt and telescoping steering column
- JBL® premium audio 5-speaker sound system with amplifier, speakers and DVC subwoofer
- 32 in. Samsung® LED 1080P Smart TV in front overhead
- Leather driver and passenger seats with powered 6-way adjustment, lumbar and loofrest functions
- Firaly multiplex system with 10 in. Vega Touch system for complete integration of coach controls (mobile app available)
- 50 in. Samsung® 4K UHD Smart TV
- Bose® sound bar with subwoofer and universal remote control
- Sony® Blu-ray™ player
- Premium Italian leather Crown Compass furniture
- Central vacuum system
- Aire-Secure™ travel locks for all pocket doors
- Stainless steel residential refrigerator
- Induction cooktop with matching wood cover
- 1.9 cu. ft. convection microwave oven
- Fisher & Paykel dishwasher
- 32 in. Samsung® LED 1080P Smart TV
- Bose® sound bar with universal remote control
- Sony® Blu-ray™ player
- Textured porcelain tile shower with skylight and clear glass shower door
- Theford® macerator toilet in main bath
- Theford® macerator toilet in mid bath (44D, 44R, 44W)
- Theford® Aria china toilet in mid bath (40P, 44B)
- Separate washer and dryer
- Storage safe

Base price

- 664,230.00
- FLAGSTONE n/c
- ALMOND CABINETRY 30.00
- EXCLUDE LINEN FRONT n/c
- OVERHEAD ACCENT WOOD n/c
- TACOMA SHADOW TILE 30.00
- CRIMSON GREY PAINT 30.00
- USA STANDARDS n/c
- 24 SP 49000 320" L9 450 TAG AXLE n/c
- 2021EPA/2021CARB RA07 n/c
- DISHWASHER n/c
- 10K GENERATOR n/c
- TRAV'LER DIRECT TV n/c
- SATELLITE DISH n/c
- LEATHER DRIVER AND PASSENGER SEATS WITH POWERED 6-WAY ADJUSTMENT, LUMBAR AND LOOFREST FUNCTIONS 1,643.00
- HAB SOFA n/c
- SLEEPMADE GEL MEMORY n/c
- MATTRESS n/c
- HEADBOARD, HARDWOOD 293.00
- Ins Timeless White Tile n/c
- 33R n/c

UNIT TOTAL **666,256.00**

DEALER INSTALLED OPTIONS

DIMENSIONS

- Exterior height:.....152.00"
- Exterior width:.....101.00"
- Tire size (front):.....315/80R22.5
- Tire size (mid):.....295/80R22.5
- Tire size (rear):.....295/80R22.5

CAPACITIES

- Fresh water tank (gals.):...100.00
- Gray water tank (gals.):...62.00
- Black water/toilet tank (gals.):.....41.00
- Propane (lbs.):.....0
- Propane (gals.):.....0
- Water heater (gals.):.....0.00

TIRES

Some dimensions may be rounded and may vary from the actual dimensions
 Weights may be estimated calculations and may vary from the actual weight - refer to the vehicle weight labels for actual weights
 Floorplans, features and specifications are subject to change without notice.