

FLEETWOOD[®]
Driven to Explore

Prowler Floor Plans, Standard Features and Options

{Prowler}

P R O W L E R Fifth Wheels and Travel Trailers 2 0 0 5



Prowler

Choose the Prowler That Best Fits Your Needs.

PROWLER®

- Deluxe exterior graphics with color coordinated ground effects and aerodynamic design.
- Storage compartments are lined, lighted and lockable. (Most models provide pass-through storage.)
- Galley maximizes storage with adjustable shelves.
- Bedroom features abundant storage.



PROWLER REGAL™

- Welded aluminum frame (all four sidewalls).
- Laminated fiberglass sidewalls.
- Abundant exterior lighting: security light, utility lights and a step light.
- Convenience extras: large entry assist handle, ladder, exterior shower, ice chest/tool box and security attachment.
- Galley incorporates removable baskets, fluorescent lighting and 2 sink lids.
- Lavy incorporates 3-bulb vanity lighting, single lever faucet, and lever bath door handles.
- Bedroom incorporates an upgraded mattress, sliding storage box, cedar in wardrobe and wire shelving.



PROWLER REGAL AX6®

- AX6® Construction = welded aluminum construction on all 6 sides (front, rear, both sidewalls, floor and ceiling).
- Molded front cap for improved style and aerodynamics.
- Rear of coach incorporates a formed automotive style bumper, back-up lights and a raised aluminum perimeter.
- Galley provides all removable baskets.
- Lavy incorporates a deluxe medicine cabinet and glass tub/shower enclosure.
- Bedroom incorporates a deluxe headboard, bedspread and pillow shams.
- Upgraded stereo/CD system features 4 living room cube speakers, woofer and 2 bedroom speakers.

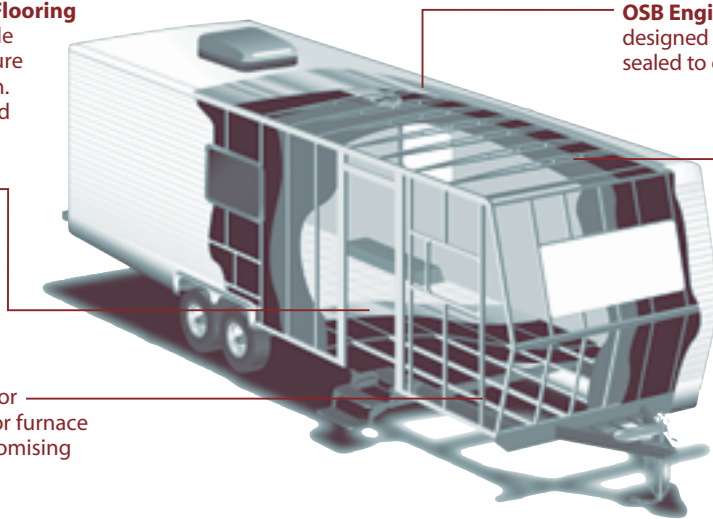


Prowler

Engineered 5/8" OSB Flooring

provides the dependable decking needed to ensure an adequate foundation. Further stability is added by interlocking these sheets using "tongue in groove" construction.

2x3 Floor Joist allows for the placement of in-floor furnace ducting without compromising structural integrity.



OSB Engineered Roof Substrate is designed to maximize strength and is sealed to ensure moisture resistance.

Engineered Radiused Ceiling Truss ensures strength, water runoff and reduced weight.

* Illustration representative of the Prowler construction.

Setting the Standard in 5th Wheel and Travel Trailer Quality.

Fleetwood® prototypes are exposed to thousands of miles of durability testing. Those components that don't survive are redesigned until they do. This sets the standard in safety and durability.

Reinforced Cambered Steel Chassis – Provides optimal strength, durability and performance.

.024 Aluminum Siding – Complete with a baked-on enamel paint, this aluminum siding offers rigidity while still being affordable.

Smooth Gloss Fiberglass Exterior Siding – Stronger than aluminum siding, this glossy surface is easy-to-clean and adds beauty and structural integrity (Available on select models).

Arctic White Seamless Synthetic Roof Membrane – Provides the ideal weather seal.

In-Ceiling Air Conditioner Duct (most models) – Better distributes cool air throughout the RV than in-floor ducting.

Fiberglass Insulation – Ensures interior comfort in every season.

Underbelly – Is a lightweight, seamless, durable weather barrier.

** Drawings are for illustrative purposes only to highlight aspects of construction. Actual RV design depends on model and is subject to change. Air conditioning unit shown is an optional item.

To Our Customers...

To make sure that you get the maximum satisfaction out of your recreational vehicle purchase, there are several things you should know:

1. Learn all you can about the travel trailer or fifth wheel you're planning to buy. Don't rely on word of mouth. Get the facts about the actual trailer length, width, unloaded weight with options, Gross Vehicle Weight Rating, and cargo carrying capacity. These are usually available in the manufacturer's sales literature or from the Cargo Carrying Capacity Label located in each trailer. Be sure to check this information **before** you decide which unit to buy.
2. Verify the towing capacity of your tow vehicle. If you don't know, or aren't sure, you can ask at your automotive dealership. Be sure to match its tow rating to the loaded (not dry) weight of your trailer. Include the weight of water, additional accessories, clothing, food and gear. To help Fleetwood travel trailer customers estimate this total weight, our Gross Vehicle Weight Ratings reflect the maximum weight of the trailer when fully loaded for camping. Be sure the weight of the tow vehicle plus the weight of your trailer do not exceed the Gross Combined Weight Rating of the tow vehicle.

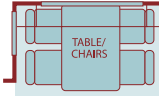
Taking these simple steps before you buy will help ensure that your trailer and tow vehicle combination is just what you wanted.

Happy Camping!

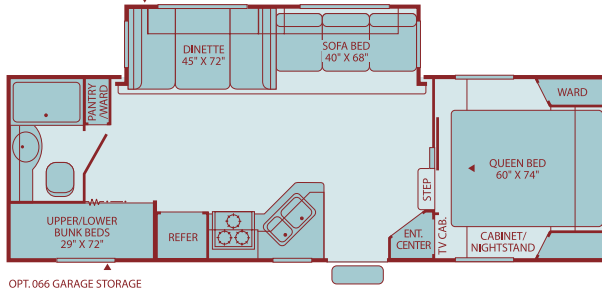
Prowler

Fifth Wheel Floor Plans

255BHS ◆ ●
Single Slide-Out
Sleeps 8

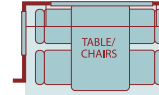


OPT. 832
FREE-STANDING TABLE AND CHAIRS
AVAILABLE ON REGAL ONLY

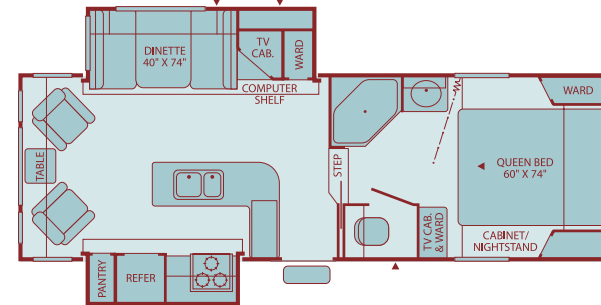


Mid Profile Fifth Wheel

255RLDS ◆ ●
Double Slide-Out
Sleeps 4

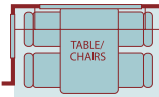


OPT. 832
FREE-STANDING TABLE AND CHAIRS
AVAILABLE ON REGAL ONLY

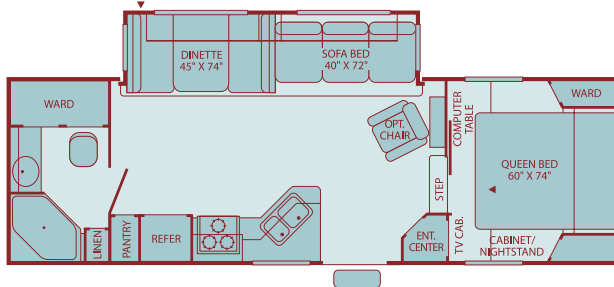


Mid Profile Fifth Wheel

275CKS ◆ ●
Single Slide-Out
Sleeps 6

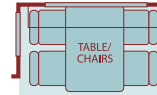


OPT. 832
FREE-STANDING TABLE AND CHAIRS
AVAILABLE ON REGAL ONLY

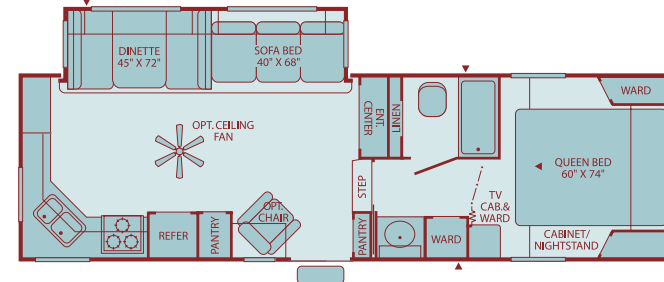


Mid Profile Fifth Wheel

285RKS ●
Single Slide-Out
Sleeps 6



OPT. 832
FREE-STANDING TABLE AND CHAIRS



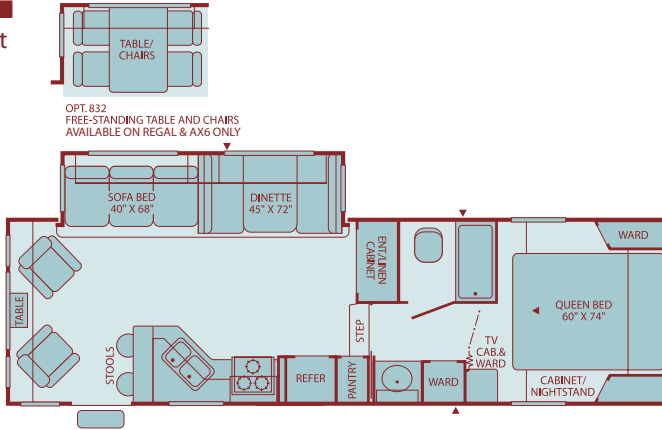
Mid Profile Fifth Wheel

Some models are not available in all areas of the country.
Please see your local dealer for model availability.

Prowler = ◆ Prowler Regal = ● Prowler Regal AX6 = ■

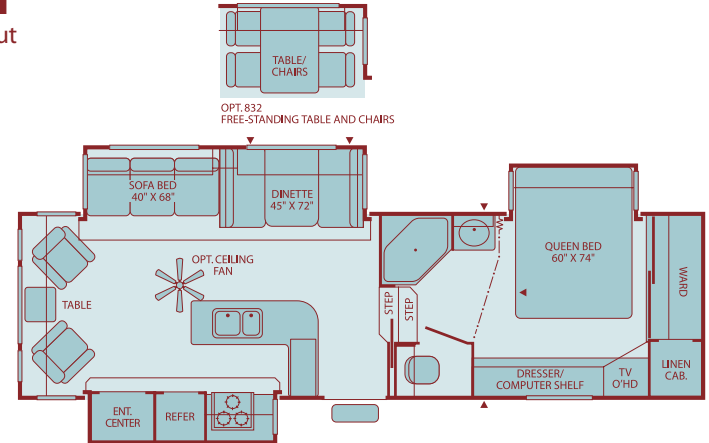
Fifth Wheel Floor Plans

285RLS ◆ ● ■
Single Slide-Out
Sleeps 6



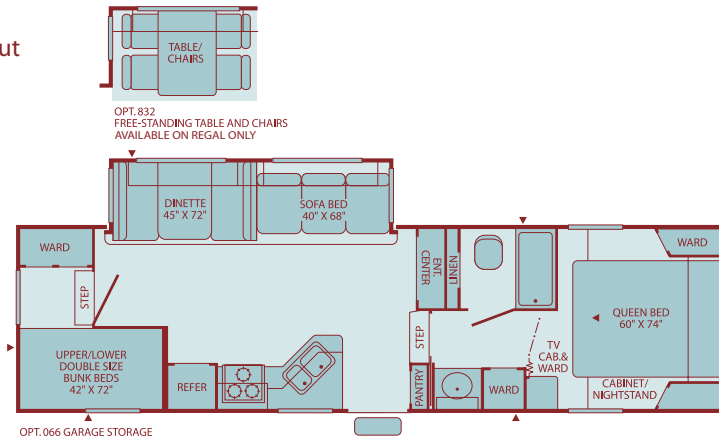
Mid Profile Fifth Wheel

295RLTS ● ■
Triple Slide-Out
Sleeps 6



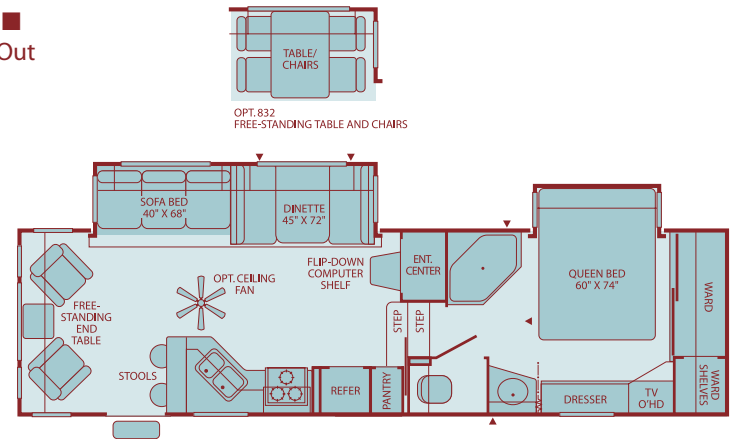
High Profile Fifth Wheel

2952BS ◆ ●
Single Slide-Out
Sleeps 10



Mid Profile Fifth Wheel

305RLDS ● ■
Double Slide-Out
Sleeps 6



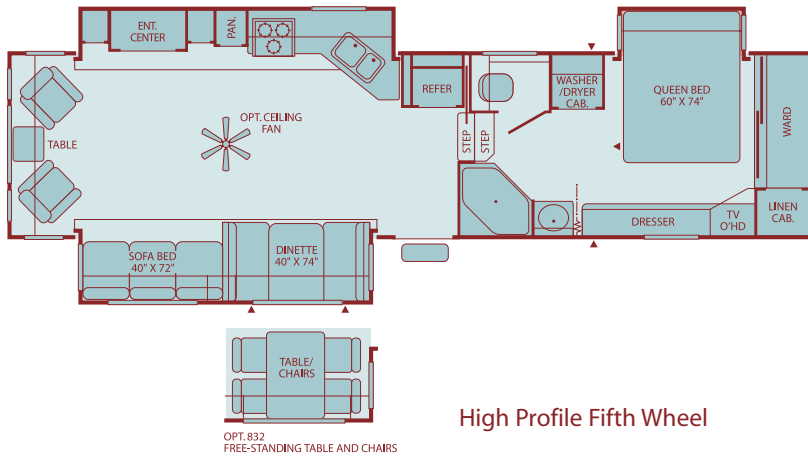
High Profile Fifth Wheel

Sleeping capacity based on standard layout. Optional furniture may increase or decrease sleeping capacity.

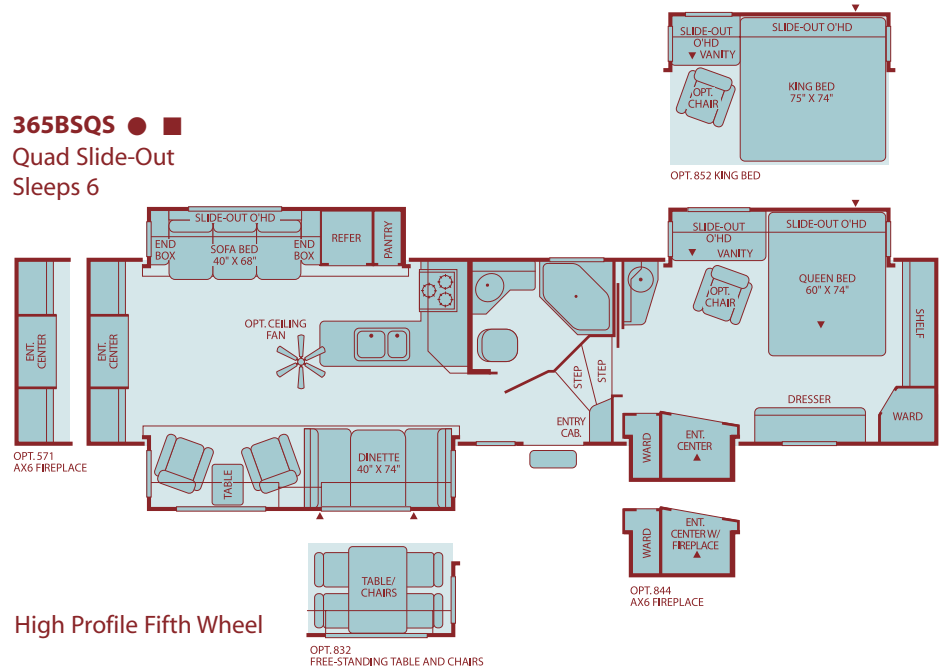
Exterior Storage = ▲

Fifth Wheel Floor Plans

345RLTS ● ■ Triple Slide-Out Sleeps 6



365BSQS ● ■ Quad Slide-Out Sleeps 6

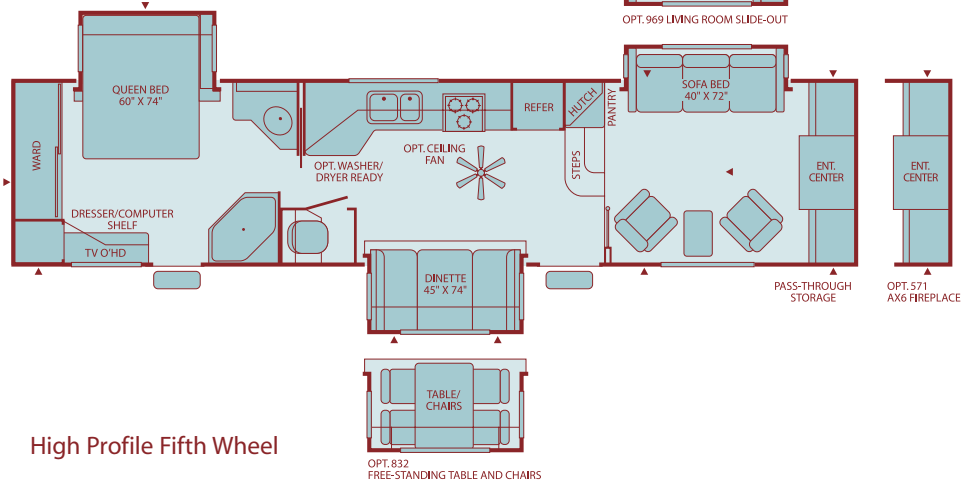


Some models are not available in all areas of the country.
Please see your local dealer for model availability.

Prowler = ◆ Prowler Regal = ● Prowler Regal AX6 = ■

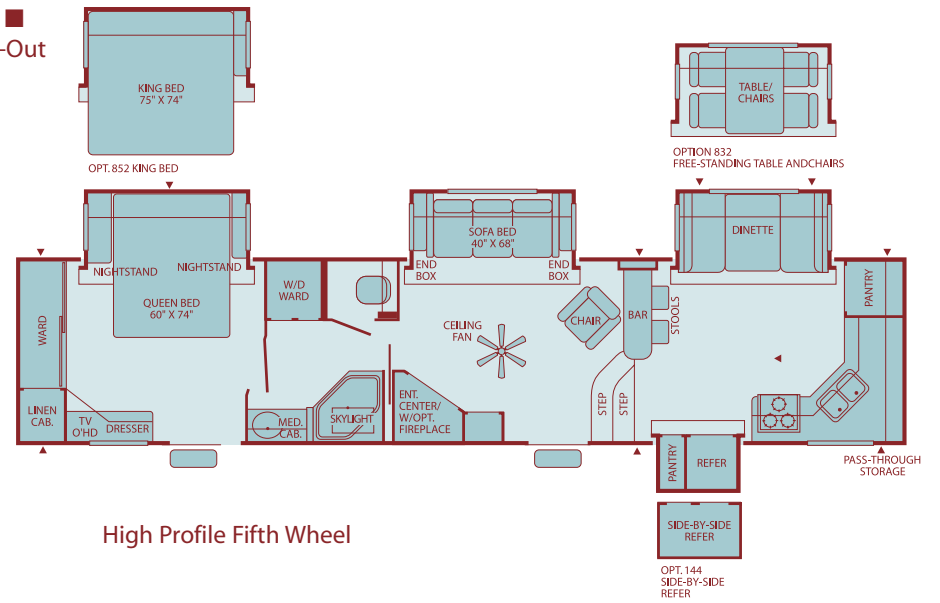
Fifth Wheel Floor Plans

365FLTS ● ■
Triple Slide-Out
Sleeps 6



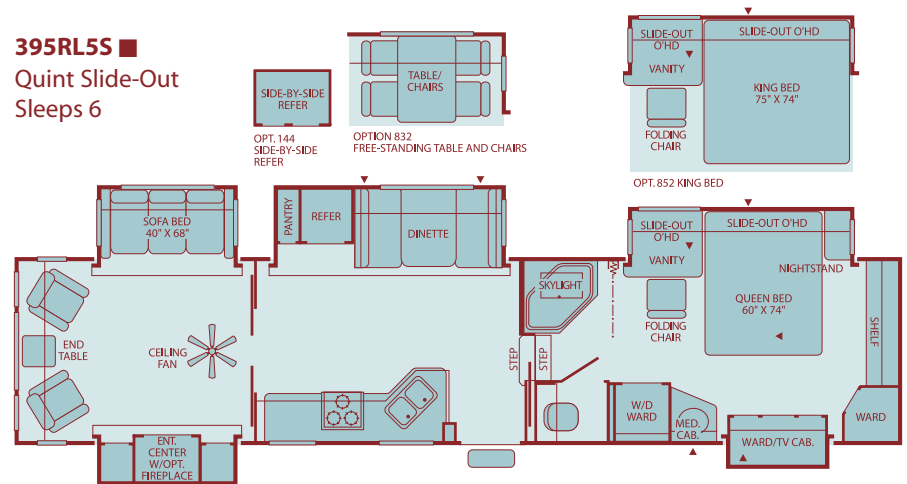
High Profile Fifth Wheel

385FKQS ■
Quad Slide-Out
Sleeps 6



High Profile Fifth Wheel

395RL5S ■
Quint Slide-Out
Sleeps 6



High Profile Fifth Wheel

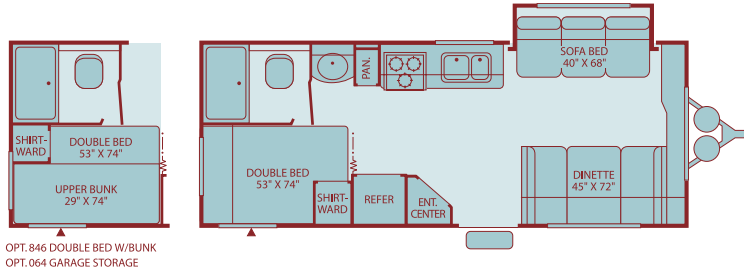
Sleeping capacity based on standard layout. Optional furniture may increase or decrease sleeping capacity.

Exterior Storage = ▲

Travel Trailer Floor Plans

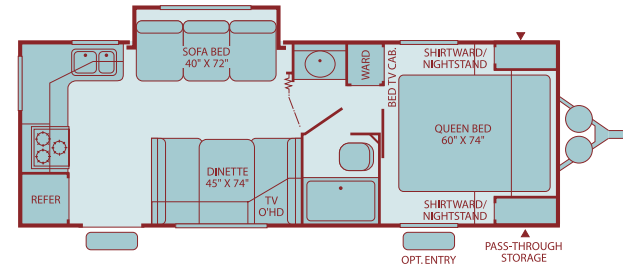
220RBS ◆

Single Slide-Out
Sleeps 6



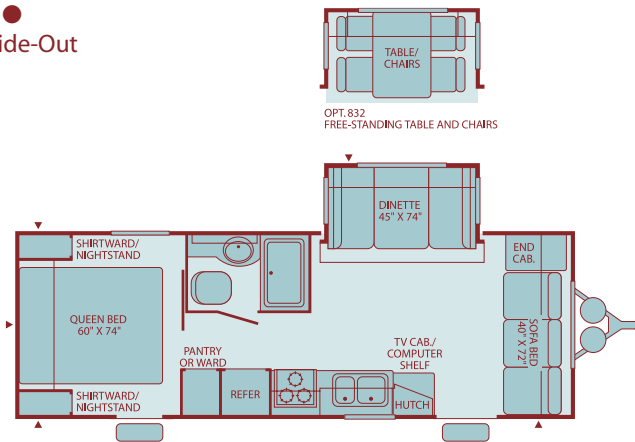
250RKS ◆

Single Slide-Out
Sleeps 6



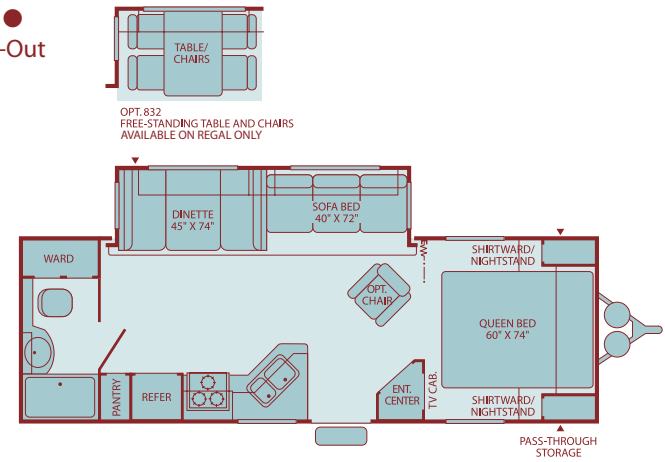
260FLS ●

Single Slide-Out
Sleeps 6



270FQS ◆ ●

Single Slide-Out
Sleeps 6

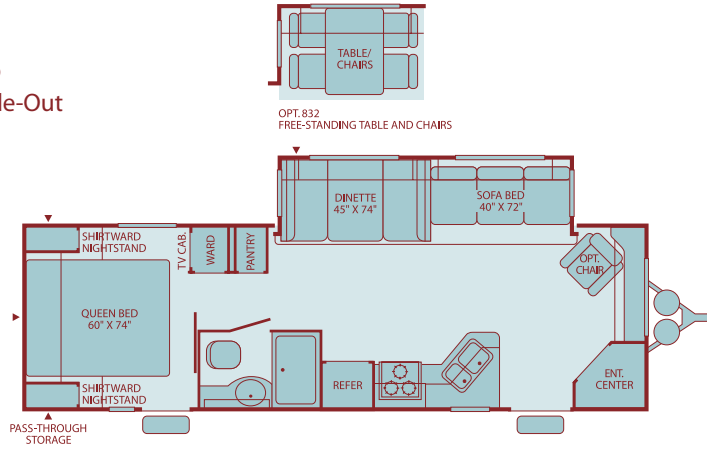


Some models are not available in all areas of the country.
Please see your local dealer for model availability.

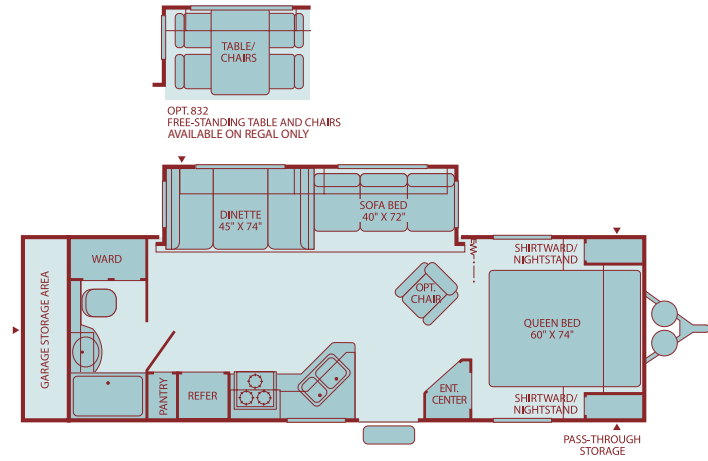
Prowler = ◆ Prowler Regal = ● Prowler Regal AX6 = ■

Travel Trailer Floor Plans

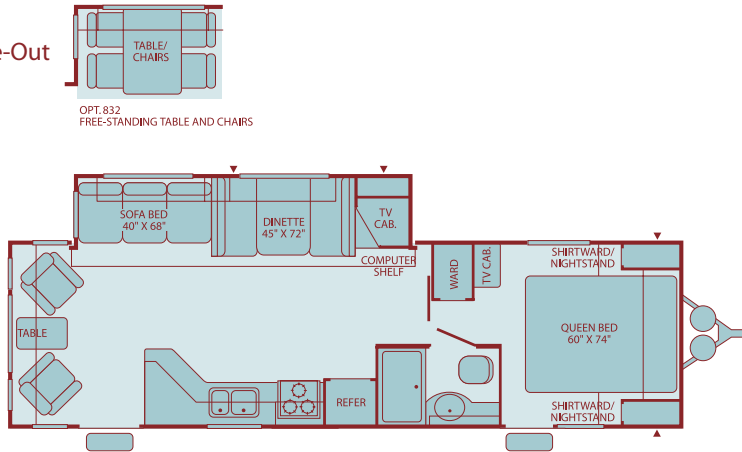
290FLS ●
Single Slide-Out
Sleeps 6



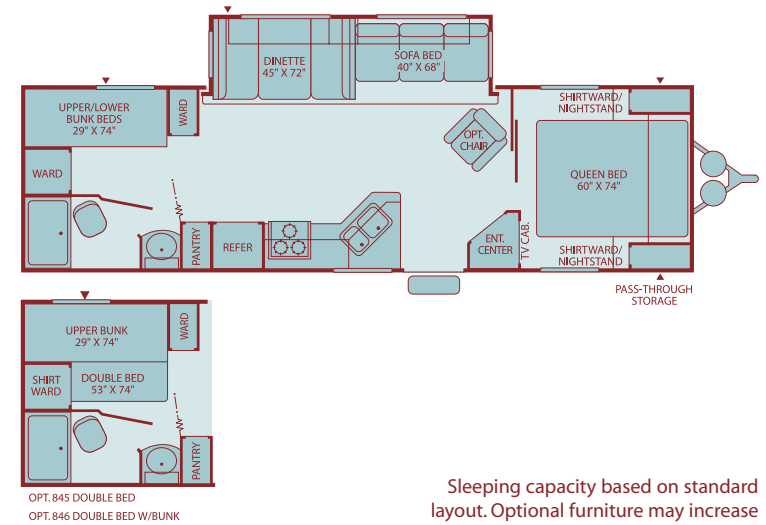
290FQSG ●
Single Slide-Out
Sleeps 6



290RLS ●
Single Slide-Out
Sleeps 6



300BHS ◆
Single Slide-Out
Sleeps 8



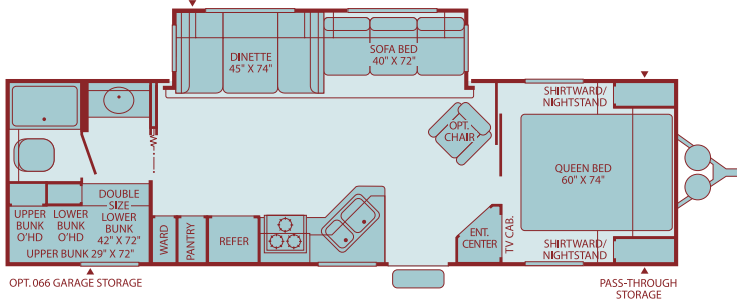
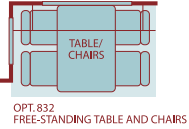
Sleeping capacity based on standard layout. Optional furniture may increase or decrease sleeping capacity.

Exterior Storage = ▲

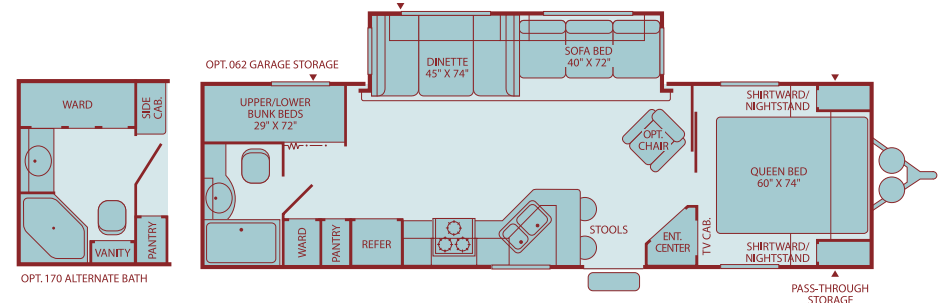
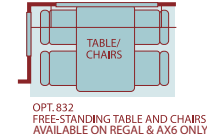
Prowler

Travel Trailer Floor Plans

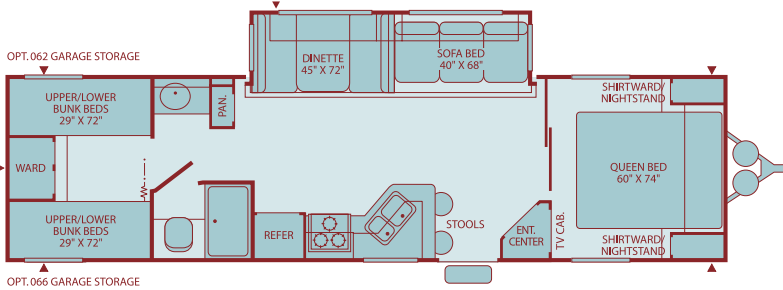
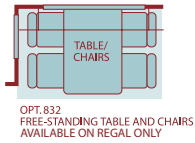
300BHS ● Single Slide-Out Sleeps 9



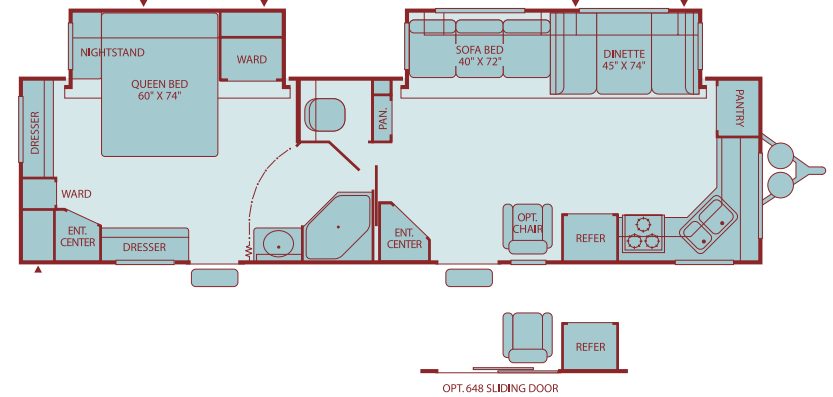
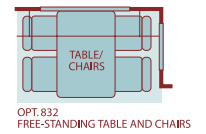
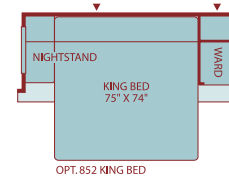
300FQS ◆ ● ■ Single Slide-Out Sleeps 8



320DBHS ◆ ● Single Slide-Out Sleeps 10



330FKDS ● ■ Double Slide-Out Sleeps 6

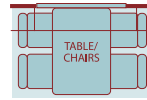


Some models are not available in all areas of the country.
Please see your local dealer for model availability.

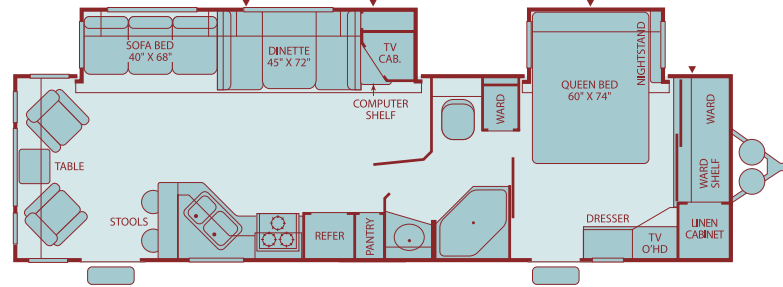
Prowler = ◆ Prowler Regal = ● Prowler Regal AX6 = ■

Travel Trailer Floor Plans

330RLDS ● Double Slide-Out Sleeps 6

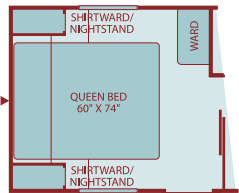


OPT. 832
FREE-STANDING TABLE AND CHAIRS



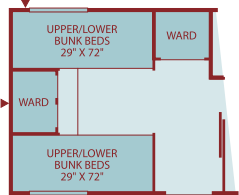
OPT. 648 SLIDING DOOR

3802BS ● Single Slide-Out Sleeps 10

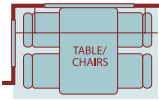


OPT. 851 ISLAND QUEEN BED

OPT. 062 GARAGE STORAGE

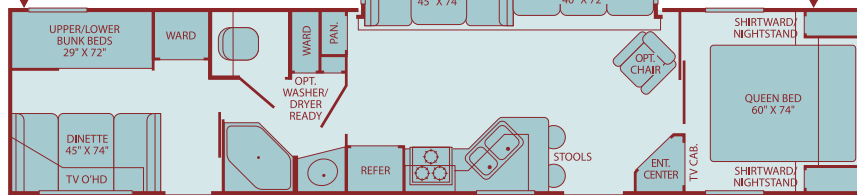


OPT. 066 GARAGE STORAGE
OPT. 863 DOUBLE BUNKS



OPT. 832
FREE-STANDING TABLE AND CHAIRS

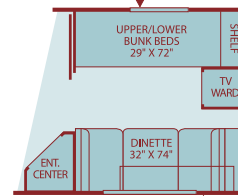
OPT. 062 GARAGE STORAGE



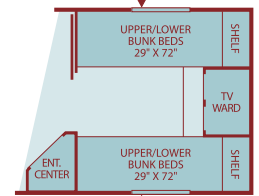
OPT. 151 RESIDENTIAL REFER



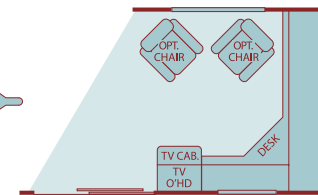
OPT. 648 SLIDING DOOR



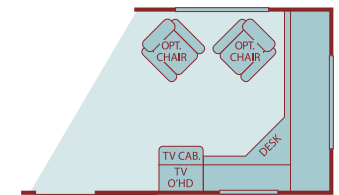
OPT. 860 BUNK/DINETTE COMBO



OPT. 862 BUNKHOUSE



OPT. 964 DEN W/SLIDING DOOR

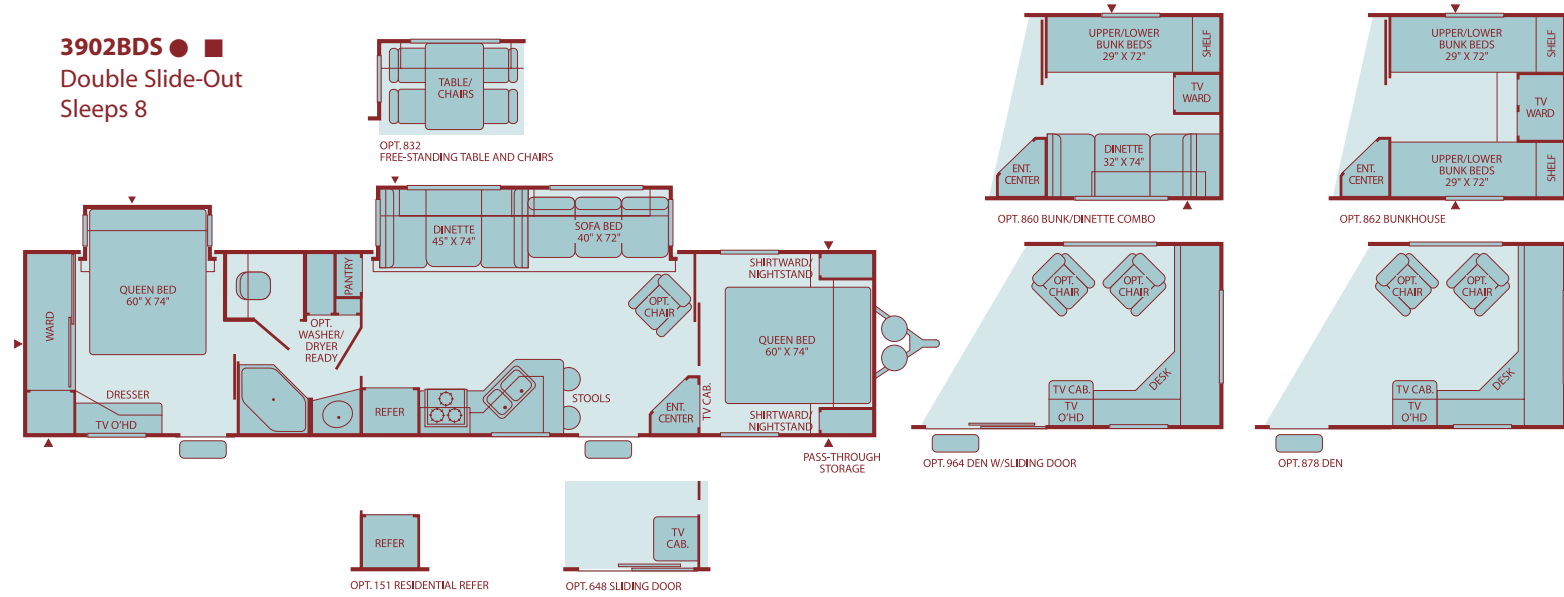


OPT. 878 DEN

Sleeping capacity based on standard layout. Optional furniture may increase or decrease sleeping capacity.

Exterior Storage = ▲

Travel Trailer Floor Plans



Some models are not available in all areas of the country. Please see your local dealer for model availability.

Prowler = ◆ Prowler Regal = ● Prowler Regal AX6 = ■

Sleeping capacity based on standard layout. Optional furniture may increase or decrease sleeping capacity.

Exterior Storage = ▲

Standard Features

Interior

THROUGHOUT

- **AM/FM/CD Player***
- **Solid Passage Doors***
- **Built-in Magazine Rack***
- Oversized Light Switches
- Decorative Wall Mirrors
- Entry Assist Handle
- Cable TV Hook-Up/Phone Jack
- 6-Gallon LP Gas Water Heater
- Slide-Out Overhead Cabinet End Shelves
- Water Heater By-Pass
- Hydroflame Forced Air, Direct Spark Ignition Furnace w/ Thermostat
- Wall Mount 12V Decor Light (Slide-Out Models)
- Prewired for Roof Air Conditioner
- Solid State Converter w/Built-In Battery Charger
- Smoke Detector/Alarm
- Fire Extinguisher
- Key Hooks Conveniently Located
- LPG Detector/Alarm

GALLEY

- **Microwave w/Electronic Touch Pad***
- **Dometic® Double Door LP Gas/Electric Refrigerator***
- **Pot & Pan Drawer***
- **Upgraded Vinyl Floor Covering***
- **Adjustable Shelves (Pantry)***
- Magic Chef® 3-Burner (1-High-Output), Range w/Oven
- Range Hood w/12V Light and Exhaust Fan
- 60/40 Sink
- Metal Single Lever Faucet
- Sink Sprayer
- Drawer Roller Guides
- 4 Galley Drawers
- Spice Rack
- Toe Kick
- Half Shelves in Galley Overhead Cabinet
- 2 Galley Electrical Receptacles
- Residential Height Countertops
- 12V Dinette Decor Light

BEDROOM

- **6'6" Bedroom Ceiling Height***
- **Lift-Up Bed Platform w/Below Bed Storage (Most Models)***
- **350 lb. Fixed Bunk Weight Rating (150 lb. Weight Rating for Combo Bunks)***
- **Built-In Bedroom TV Viewing Area***
- **Wardrobes Accommodate Residential Size Clothes Hangers***
- Innerspring Mattress
- Blackout Bedroom Ceiling Vent (5th Wheels)
- Raised Panel Overhead Cabinet Doors
- Angled Front Bedroom Cabinetry (Mid Profile 5th Wheels)
- Miniblinds Throughout (Except Bunk Windows)

BATHROOM

- **Medicine Cabinet w/Mirrored Door***
- **Removable Wire Basket (Most Models)***
- 12V Power Exhaust Roof Vent
- Wall-Switched Ceiling Light

Decor choices

- Nantucket
- Enchanted Forest
- Windrift
- Vintage
- Beige Bounty

Exterior

THROUGHOUT

- **Dual 30 lb. LP Gas Cylinders w/Regulator & Auto-Changeover***
- **Rear Bumper w/Sewer Hose Carrier***
- **Split Tank LP Gas System (5th Wheels)***
- **LP Gas Quick Connector (Low Pressure)***
- **Awning***
- Water Resistant Mini-Breaker
- Phone & Satellite Jacks
- Extended Pin Box & Power Landing Gear (5th Wheels)
- Quick Drain Holding Tank (Fresh Water)
- Front & Rear Colored Skirt End Caps
- Molded Wheel Well Skirts
- Radius Truss Roof Rafters
- Welded, Dual Battery Rack (Travel Trailer Models Only)
- Hitch Light
- TV Antenna
- 120V Patio Receptacle

BODY STRUCTURE

- **Cambered Chassis***
- **One-Piece Seamless Roof***
- I-Beam Main Rails

SAFETY / CONVENIENCE

- **Wall Mounted Systems Monitor Panel***
- **Tinted Safety Glass Windows***
- 4-Wheel Electric Brakes
- 120-Volt GFI Circuit Protection (Galley/Bath/Patio)
- Break-Away Emergency Disconnect Brake System

STORAGE

- **Locking, Lined Luggage Compartments w/Lights***
- Split Front 5th Wheel Luggage Doors
- Finished Luggage Door Openings

Options

THROUGHOUT (Interior)

- Stereo Upgrade
- 6-Gallon LP Gas/120V DSI (Direct Spark Ignition) Water Heater
- 13,500 BTU Air Conditioner
- Water Purifier
- Free Standing Chair (Most Models)
- CO Detector/Alarm (Standard Feature as of 01/01/05)

BEDROOM

- Upgraded Mattress
- Bedroom/Living Room Carpet (Most Models)

BATHROOM

- Bath Skylight
- Tub/Shower Enclosure

THROUGHOUT (Exterior)

- Exterior Shower
- Adjustable Hitch Coupler
- Radius Entry Door
- Bicycle Rack Receiver
- Spare Tire w/Cover
- Roof Ladder

STORAGE

- Radius Luggage Doors
- Exterior Garage Storage (Available on Select Models)

* Denotes Fleetwood's Key Features

Weights and Measurements *for Prowler*

FIFTH WHEEL WEIGHTS	FIFTH WHEELS				
	255BHS	255RLDS	275CKS	285RLS	2952BS
GVWR (lbs.)¹	9,700	10,200	9,400	10,200	11,400
Gross Dry Weight (lbs.)^{2,6}	6,932	7,546	6,914	7,607	7,994
Max Carrying Capacity (lbs.)^{3,6}	2,768	2,654	2,486	2,593	3,406
Hitch Dry Weight (lbs.)^{2,6,9}	1,234	1,389	1,053	1,419	1,359
DIMENSIONS AND CAPACITIES					
Length (Feet and Inches)^{4,6,8}	27'11"	27'4"	28'3"	30'4"	32'5"
Height (Feet and Inches)^{5,6}	11'7"	11'7"	11'7"	11'9"	11'10"
Fresh Water Holding Tank (gal.)^{6,7}	40	40	40	40	50
Grey Water Holding Tank (gal.)^{6,7}	40	40	40	40/40	40/40
Black Water Holding Tank (gal.)^{6,7}	40	40	40	40	40
LP Gas Capacity (lbs.)^{6,7}	60	60	60	60	60
Tire Size (Load Range)	ST225/ 75R 15(C)	ST225/ 75R 15(C)	ST225/ 75R 15(C)	ST225/ 75R 15(C)	ST225/ 75R 15(D)

1. GVWR (Gross Vehicle Weight Rating): is the maximum permissible weight of this trailer when fully loaded. It includes all weight at the trailer axle(s) and tongue or pin.
2. All dry weights are based on the standard model and do not include optional features or equipment.
3. Maximum Carrying Capacity is determined by subtracting Gross Dry Weight from GVWR. Maximum Carrying Capacity includes all fluids, optional features, equipment, and personal cargo.
4. Trailer length includes 3' 6" for hitch; fifth wheel includes standard pin box.
5. Add 9" if equipped with optional roof air conditioner.
6. Approximate.
7. Water weight equals 8.3 lbs per gallon. LP Gas weight equals 4.2 lbs per gallon.
8. Add 10" if equipped with optional spare tire and carrier.
9. Hitch weights are dependent upon how the trailer is equipped with options, on-board cargo and tank fluid levels. Actual hitch weights may be higher or lower than shown. It is recommended that the tow vehicle and hitch for your trailer have sufficient capacity to accommodate actual usage.

IMPORTANT— PLEASE READ: Product information, photography and illustrations included in this publication were as accurate as possible at the time of printing. For further product information and changes, please visit our website at www.fleetwoodrv.com or contact your local Fleetwood dealer. Prices, materials, design and specifications are subject to change without notice. All weights, fuel, liquid capacities and dimensions are approximate. Fleetwood has designed its recreational vehicles to provide a variety of uses for customers. Each vehicle features optimal seating, sleeping, storage and fluid capacities. The user is responsible for selecting the proper combination of loads (i.e., occupants, equipment, fluids, cargo, etc.) to ensure that the vehicle's capacities are not exceeded.

Weights and Measurements *for Prowler*

TRAVEL TRAILER WEIGHTS	TRAVEL TRAILERS					
	220RBS	250RKS	270FQS	300BHS	300FQS	320DBHS
GVWR (lbs.)¹	6,500	7,400	7,900	9,500	9,600	9,500
Gross Dry Weight (lbs.)^{2,6}	4,820	4,844	5,779	6,556	6,625	6,980
Max Carrying Capacity (lbs.)^{3,6}	1,680	2,556	2,121	2,944	2,975	2,520
Hitch Dry Weight (lbs.)^{2,6,9}	667	503	747	833	939	893
DIMENSIONS AND CAPACITIES						
Length (Feet and Inches)^{4,6,8}	24'5"	26'2"	27'10"	31'10"	31'10"	33'11"
Height (Feet and Inches)^{5,6}	9'8"	9'8"	10'1"	10'2"	10'2"	10'2"
Fresh Water Holding Tank (gal.)^{6,7}	50	50	50	50	50	50
Grey Water Holding Tank (gal.)^{6,7}	40	40	40	40	40	40
Black Water Holding Tank (gal.)^{6,7}	40	40	40	40	40	40
LP Gas Capacity (lbs.)^{6,7}	60	60	60	60	60	60
Tire Size (Load Range)	ST205/ 75R 14(B)	ST205/ 75R 14(C)	ST205/ 75R 14(C)	ST225/ 75R 15(C)	ST225/ 75R 15(C)	ST225/ 75R 15(C)

- GVWR (Gross Vehicle Weight Rating): is the maximum permissible weight of this trailer when fully loaded. It includes all weight at the trailer axle(s) and tongue or pin.
- All dry weights are based on the standard model and do not include optional features or equipment.
- Maximum Carrying Capacity is determined by subtracting Gross Dry Weight from GVWR. Maximum Carrying Capacity includes all fluids, optional features, equipment, and personal cargo.
- Trailer length includes 3' 6" for hitch; fifth wheel includes standard pin box.
- Add 9" if equipped with optional roof air conditioner.
- Approximate.
- Water weight equals 8.3 lbs per gallon. LP Gas weight equals 4.2 lbs per gallon.
- Add 10" if equipped with optional spare tire and carrier.
- Hitch weights are dependent upon how the trailer is equipped with options, on-board cargo and tank fluid levels. Actual hitch weights may be higher or lower than shown. It is recommended that the tow vehicle and hitch for your trailer have sufficient capacity to accommodate actual usage.

IMPORTANT— PLEASE READ: Product information, photography and illustrations included in this publication were as accurate as possible at the time of printing. For further product information and changes, please visit our website at www.fleetwoodrv.com or contact your local Fleetwood dealer. Prices, materials, design and specifications are subject to change without notice. All weights, fuel, liquid capacities and dimensions are approximate. Fleetwood has designed its recreational vehicles to provide a variety of uses for customers. Each vehicle features optimal seating, sleeping, storage and fluid capacities. The user is responsible for selecting the proper combination of loads (i.e., occupants, equipment, fluids, cargo, etc.) to ensure that the vehicle's capacities are not exceeded.

Standard Features for Prowler Regal

Interior

THROUGHOUT

- **Deluxe Flexsteel® Furniture Styling***
- **Built-in Magazine Rack***
- **Solid Passage Doors***
- **AM/FM/CD Stereo w/4 Cube Living Room Speakers, Woofer & 2 Bedroom Mounted Speakers***
- **Hardwood Doors Throughout***
- **Ventilating Slide-Out End Windows***
- Oversized Light Switches
- Decorative Wall Mirrors
- Entry Assist Handle
- Slide-Out Overhead Cabinet End Shelves
- 6-Gallon LP Gas Water Heater
- Water Heater By-Pass
- Hydroflame Forced Air, Direct Spark Ignition Furnace w/Thermostat
- Wall Mount 12V Decor Light (Slide-Out Models)
- Solid State Converter w/Built-In Battery Charger
- Cable TV Hook-Up/Phone Jack

GALLEY

- **Microwave w/Electronic Touch Pad***
- **Dometic® Double Door LP Gas/Electric Refrigerator***
- **Upgraded Vinyl Floor Covering***
- **Pot & Pan Drawer***
- **Metal Single Lever Faucet***
- **Half Shelves in Galley Overhead Cabinet***
- **Pantry w/Adjustable Shelves & Removable Baskets***
- 60/40 Sink
- Magic Chef® 3-Burner (1-High-Output), Range w/Oven
- Range Hood w/12V Light & Exhaust Fan
- Sink Sprayer
- Drawer Roller Guides
- 4 Galley Drawers
- Spice Rack
- Toe Kick
- 2 Galley Electrical Receptacles
- Residential Height Countertops
- 12V Dinette Decor Light
- 22" Range w/Oven
- Drawer Under Dinette
- Extra Sink Lid
- 12V Fluorescent Lighting
- Raised Panel Refrigerator Front
- Tip Out Sponge Tray
- Raised Panel Upper Cabinet Doors

BEDROOM

- **6'6" Bedroom Ceiling Height***
- **Lift-Up Bed Platform w/Below Bed Storage (Most Models)***
- **Wardrobes Accommodate Residential Size Clothes Hangers***
- **350 lb. Fixed Bunk Weight Rating (150 lb. Weight Rating for Combo Bunks)***
- **Cedar in Wardrobe***
- **Sliding Underbed Storage Box***
- **Cargo Net at Bunk Locations***
- **Built-In Bedroom TV Viewing Area***
- **Upgraded Innerspring Mattress***
- **Clothes Hamper (Most Models)***
- Blackout Bedroom Ceiling Vent (5th Wheels)
- Angled Front Bedroom Cabinetry (Mid Profile 5th Wheels)
- Miniblinds Throughout (Except Bunk Windows)
- Raised Panel Overhead Cabinet Doors
- Bedroom Swivel Reading Lights
- Wire Shelving in Wardrobes

BATHROOM

- **Medicine Cabinet w/Mirrored Door***
- **Removable Wire Basket (Most Models)***
- **Single Lever Lavy Faucet***
- **Foot Pedal Toilet***
- **Wire Shelf Wardrobe Storage (Most Models)***
- Lever Bath Door Handle
- 12V Power Exhaust Roof Vent
- Wall-Switched Ceiling Light
- Bathroom Skylight
- 3-Bulb Lavy Vanity Light

Decor Choices

- Nantucket
- Enchanted Forest
- Windrift
- Vintage
- Beige Bounty

Exterior

THROUGHOUT

- **Awning***
- **Dual 30 lb. LP Gas Cylinders w/Regulator & Auto-Changeover***
- **LP Gas Quick Connector (Low Pressure)***
- **Split Tank LP Gas System (5th Wheels)***
- **Rear Bumper w/Sewer Hose Carrier***
- **Fiberglass Exterior w/Deluxe Graphics***
- **Ice Chest/Tool Box***
- **Laminated Sidewalls w/Welded Aluminum Frame***
- **Exterior Shower***
- Extended Pin Box & Power Landing Gear (5th Wheels)
- Quick Drain Holding Tank (Fresh Water)
- Phone & Satellite Jacks
- Water Resistant Mini-Breaker
- Front & Rear Colored Skirt End Caps
- Molded Wheel Well Skirts
- Radius Truss Roof Rafters
- Hitch Light
- Welded, Dual Battery Rack (Travel Trailer Models Only)
- TV Antenna
- 120V Patio Receptacle
- Molded Step Trim
- Stabilizer Jacks
- Recessed Taillights
- Lighted License Plate
- Aluminum Bumper Cover
- Wheel Trim Rings

BODY STRUCTURE

- **Cambered Chassis***
- **One-Piece Seamless Roof***
- I-Beam Main Rails

SAFETY / CONVENIENCE

- **Wall Mounted Systems Monitor Panel***
- **Tinted Safety Glass Windows***
- **Large Lend-A-Hand Assist Handle***
- 120-Volt GFI Circuit Protection (Galley/Bath/Patio)
- 4-Wheel Electric Brakes
- Break-Away Emergency Disconnect Brake System
- Roof Ladder
- Recessed Entry Step Light
- Roadside Utility Light
- Outside Security Lighting
- Security/Pet Attachment

STORAGE

- **Radius Luggage Doors***
- **Locking, Lined Luggage Compartments w/Lights***
- **Heated 5th Wheel Bulkhead Storage Areas (Select Models)***
- Finished Luggage Door Openings
- Split Front 5th Wheel Luggage Doors

Options

THROUGHOUT (Interior)

- 6-Gallon LP Gas/120V DSI (Direct Spark Ignition) Water Heater
- 13,500 BTU Air Conditioner
- Water Purifier
- Free Standing Chair (Most Models)
- 6-Panel Refrigerator Door
- Free Standing Table & Chairs
- CO Detector/Alarm (Standard Feature as of 01/01/05)
- Sleeper Sofa (Most Models)

BATHROOM

- Tub/Shower Enclosure

BEDROOM

- Pillow Shams
- Bedroom/Living Room Carpet (Most Models)

THROUGHOUT (Exterior)

- Aerodynamic Front Cap
- Bicycle Rack Receiver
- Spare Tire

STORAGE

- Exterior Garage Storage (Available on Select Models)

* Denotes Fleetwood's Key Features

Weights and Measurements for Prowler Regal

FIFTH WHEEL WEIGHTS	FIFTH WHEELS											
	255BHS	255RLDS	275CKS	285RKS	285RLS	295RLTS	2952BS	305RLDS	345RLTS	365BSQS	365FLTS	
GVWR (lbs.) ¹	9,700	10,300	9,500	10,400	10,400	12,000	11,450	11,600	14,000	14,100	13,500	
Gross Dry Weight (lbs.) ^{2,6}	6,927	7,705	6,852	7,775	8,104	9,017	8,184	9,037	10,406	11,048	10,170	
Max Carrying Capacity (lbs.) ^{3,6}	2,773	2,595	2,648	2,625	2,296	2,983	3,266	2,563	3,594	3,052	3,330	
Hitch Dry Weight (lbs.) ^{2,6,9}	1,256	1,363	1,098	1,694	1,694	1,886	1,431	1,588	2,362	2,143	1,656	
DIMENSIONS AND CAPACITIES												
Length (Feet and Inches) ^{4,6,8}	27'9"	27'4"	28'3"	29'11"	30'4"	30'11"	32'5"	31'11"	35'11"	37'11"	37'9"	
Height (Feet and Inches) ^{5,6}	11'7"	11'7"	11'7"	11'9"	11'9"	12'5"	11'9"	12'5"	12'6"	12'6"	12'6"	
Fresh Water Holding Tank (gal.) ^{6,7}	40	40	40	40	40	40	40	40	40	40	40	
Grey Water Holding Tank (gal.) ^{6,7}	40	40	40	40/40	40/40	40	40/40	40/21	40	40	40	
Black Water Holding Tank (gal.) ^{6,7}	40	40	40	40	40	40	40	40	40	40	40	
LP Gas Capacity (lbs.) ^{6,7}	60	60	60	60	60	60	60	60	60	60	60	
Tire Size (Load Range)	ST225/ 75R 15(C)	ST225/ 75R 15(C)	ST225/ 75R 15(C)	ST225/ 75R 15(C)	ST225/ 75R 15(C)	ST225/ 75R 15(D)	ST225/ 75R 15(D)	ST225/ 75R 15(D)	ST235/ 80R 16(D)	ST235/ 80R 16(D)	ST235/ 80R 16(D)	

TRAVEL TRAILER WEIGHTS	TRAVEL TRAILERS											
	260FLS	270FQS	290FLS	290FQSG	290RLS	300BHS	300FQS	320DBHS	330FKDS	330RLDS	3802BS	3902BDS
GVWR (lbs.) ¹	7,800	8,000	9,400	9,700	9,500	9,600	9,600	9,400	11,100	10,800	11,400	11,200
Gross Dry Weight (lbs.) ^{2,6}	5,695	6,062	6,910	6,679	7,124	6,993	6,792	7,316	8,338	7,915	8,310	8,808
Max Carrying Capacity (lbs.) ^{3,6}	2,105	1,938	2,490	3,021	2,376	2,607	2,808	2,084	2,762	2,885	3,090	2,392
Hitch Dry Weight (lbs.) ^{2,6,9}	843	800	918	921	868	936	836	900	1,072	1,113	1,081	853
DIMENSIONS AND CAPACITIES												
Length (Feet and Inches) ^{4,6,8}	26'11"	27'10"	29'10"	30'4"	31'11"	31'10"	31'10"	33'11"	34'10"	33'11"	39'7"	39'7"
Height (Feet and Inches) ^{5,6}	9'9"	10'1"	10'1"	10'1"	10'1"	10'1"	10'1"	10'1"	10'3"	10'3"	10'3"	10'3"
Fresh Water Holding Tank (gal.) ^{6,7}	40	40	40	40	40	40	40	40	40	40	40	40
Grey Water Holding Tank (gal.) ^{6,7}	40	40	40	40	40	40	40	40	40/21	40	40	40
Black Water Holding Tank (gal.) ^{6,7}	40	40	40	40	40	40	40	40	40	40	40	40
LP Gas Capacity (lbs.) ^{6,7}	60	60	60	60	60	60	60	60	60	60	60	60
Tire Size (Load Range)	ST205/ 75R 15(C)	ST205/ 75R 15(C)	ST225/ 75R 15(C)	ST225/ 75R 15(D)	ST225/ 75R 15(C)	ST225/ 75R 15(C)	ST225/ 75R 15(C)	ST225/ 75R 15(C)	ST225/ 75R 15(D)	ST225/ 75R 15(D)	ST225/ 75R 15(D)	ST225/ 75R 15(D)

- GVWR (Gross Vehicle Weight Rating): is the maximum permissible weight of this trailer when fully loaded. It includes all weight at the trailer axle(s) and tongue or pin.
- All dry weights are based on the standard model and do not include optional features or equipment.
- Maximum Carrying Capacity is determined by subtracting Gross Dry Weight from GVWR. Maximum Carrying Capacity includes all fluids, optional features, equipment, and personal cargo.
- Trailer length includes 3' 6" for hitch; fifth wheel includes standard pin box.
- Add 9" if equipped with optional roof air conditioner.
- Approximate.
- Water weight equals 8.3 lbs per gallon. LP Gas weight equals 4.2 lbs per gallon.
- Add 10" if equipped with optional spare tire and carrier.

- Hitch weights are dependent upon how the trailer is equipped with options, on-board cargo and tank fluid levels. Actual hitch weights may be higher or lower than shown. It is recommended that the tow vehicle and hitch for your trailer have sufficient capacity to accommodate actual usage.

IMPORTANT— PLEASE READ: Product information, photography and illustrations included in this publication were as accurate as possible at the time of printing. For further product information and changes, please visit our website at www.fleetwoodrv.com or contact your local Fleetwood dealer. Prices, materials, design and specifications are subject to change without notice. All weights, fuel, liquid capacities and dimensions are approximate. Fleetwood has designed its recreational vehicles to provide a variety of uses for customers. Each vehicle features optimal seating, sleeping, storage and fluid capacities. The user is responsible for selecting the proper combination of loads (i.e., occupants, equipment, fluids, cargo, etc.) to ensure that the vehicle's capacities are not exceeded.

Standard Features for Prowler Regal AX6

Interior

THROUGHOUT

- **Built-in Magazine Rack***
- **Deluxe Flexsteel® Furniture Styling***
- **AM/FM/CD Stereo w/4 Cube Living Room Speakers, Woofer & 2 Bedroom Mounted Speakers***
- **Hardwood Doors Throughout***
- **Upgraded Carpet & Pad***
- **Upgraded Window Treatments***
- **Upgraded Paper Towel Holder***
- **Upgraded Vinyl Floor Covering***
- Oversized Light Switches
- Decorative Wall Mirrors
- Solid Passage Doors
- Entry Assist Handle
- Slide-Out Overhead Cabinet End Shelves
- 6-Gallon LP Gas Water Heater
- Water Heater By-Pass
- Hydroflame Forced Air, Direct Spark Ignition Furnace w/Thermostat
- Wall Mount 12V Decor Light (Slide-Out Models)
- Solid State Converter w/Built-In Battery Charger
- Cable TV Hook-Up/Phone Jack
- Prewired for Roof Air Conditioner

GALLEY

- **Microwave w/Electronic Touch Pad***
- **Dometic® Double Door LP Gas/Electric Refrigerator***
- **Swing-Out Galley Bread Board (Select Models)***
- **All Removable Galley Baskets***
- **Pot & Pan Drawer***
- **Half Shelves in Galley Overhead Cabinet***
- **Cathedral-Arched Overhead Cabinet Doors***
- **Upgraded Vinyl Floor Covering***
- Magic Chef® 3-Burner (1-High-Output), Range w/Oven
- Range Hood w/12V Light & Exhaust Fan
- 60/40 Sink
- Metal Single Lever Faucet
- Sink Sprayer
- Drawer Roller System
- 4 Galley Drawers
- Spice Rack
- Toe Kick
- 2 Galley Electrical Receptacles
- Residential Height Countertops
- 12V Dinette Decor Light
- 22" Range w/Oven
- Drawer Under Dinette
- Extra Sink Lid
- 12V Fluorescent Lighting
- Raised Panel Refrigerator Front
- Tip Out Sponge Tray
- Raised Panel Upper Cabinet Doors
- 2 Drawers Under Dinette

BEDROOM

- **6'6" Bedroom Ceiling Height***
- **Lift-Up Bed Platform w/Below Bed Storage (Most Models)***
- **Wardrobes Accommodate Residential Size Clothes Hangers***
- **350 lb. Fixed Bunk Weight Rating (150 lb. Weight Rating for Combo Bunks)***
- **Upgraded Innerspring Mattress***
- **Built-In Bedroom TV Viewing Area***
- **Cargo Net at Bunk Locations***
- **Wire Shelving in Wardrobes***
- **Cedar in Wardrobe***
- **Sliding Underbed Storage Box***
- **2 Sliding Bed Boxes (Mid-Profile 5th Wheels)***
- Blackout Bedroom Ceiling Vent (5th Wheels)
- Raised Panel Overhead Cabinet Doors
- Angled Front Bedroom Cabinetry (Mid Profile 5th Wheels)
- Miniblinds Throughout (Except Bunk Windows)
- Clothes Hamper (Most Models)
- Upgraded Bedspread
- Upgraded Headboard
- Bedroom Swivel Reading Lights
- Pillow Shams

BATHROOM

- **Medicine Cabinet w/Mirrored Door***
- **Removable Wire Basket (Most Models)***
- **Wire Shelf Wardrobe Storage (Most Models)***
- **Single Lever Lavy Faucet***
- **Foot Pedal Toilet***
- 12V Power Exhaust Roof Vent
- Wall-Switched Ceiling Light
- Bathroom Skylight
- 3-Bulb Lavy Vanity Light
- Lever Bath Door Handle
- Sliding Bathroom Drawer (Most Models)
- Glass Shower Enclosure
- Bath Door Mirror
- Drop Down Medicine Cabinet Shelf

Decor Choices

- Nantucket
- Enchanted Forest
- Windrift
- Vintage
- Beige Bounty

Exterior

THROUGHOUT

- **Awning***
- **Dual 30 lb. LP Gas Cylinders w/Regulator & Auto-Changeover***
- **Split Tank LP Gas System (5th Wheels)***
- **LP Gas Quick Connector (Low Pressure)***
- **Rear Bumper w/Sewer Hose Carrier***
- **Laminated Sidewalls w/Welded Aluminum Frame***
- **Fiberglass Exterior w/Deluxe Graphics***
- **Ice Chest/Tool Box***
- **Welded Full Aluminum Cage (Front, Rear, Both Sidewalls, Floor & Ceiling)***
- **Stabilizer Jacks***
- **Exterior Shower***
- **Recessed Taillights***
- **Lighted License Plate***
- **Integrated Formed ABS Bumper***
- **Mid-Coach Turn Signals***
- Chrome Cap Wheel Skirt Fasteners
- Front & Rear Colored Skirt End Caps
- Extended Pin Box & Power Landing Gear (5th Wheels)
- Quick Drain Holding Tank (Fresh Water)
- Phone & Satellite Jacks
- Water Resistant Mini-Breaker
- Molded Wheel Well Skirts
- Radius Truss Roof Rafters
- Hitch Light
- TV Antenna
- Welded, Dual Battery Rack (Travel Trailer Models Only)
- 120V Patio Receptacle
- Molded Step Trim
- Aluminum Bumper Cover
- Wheel Trim Rings
- Top Hinged LP Gas Bottle Cover (Travel Trailers)
- Attic Vent
- Molded Front Aerodynamic Cap
- Rear Raised Perimeter
- Taillight w/Back-Up Light
- Wheel Covers
- Extra Luggage Door in Dinette

BODY STRUCTURE

- **Cambered Chassis***

SAFETY / CONVENIENCE

- **Wall-Mounted Systems Monitor Panel***
- **Deep Tinted Safety Glass Windows***
- **Large Lend-A-Hand Assist Handle***
- **One-Piece Seamless Roof***
- 4-Wheel Electric Brakes
- Outside Security Lighting
- 120-Volt GFI Circuit Protection (Galley/Bath/Patio)
- Break-Away Emergency Disconnect Brake System

STORAGE

- **Heated 5th Wheel Bulkhead Storage Areas (Select Models)***
- **Locking, Lined Luggage Compartments w/Lights***
- **Radius Luggage Doors***
- Split Front 5th Wheel Luggage Doors
- Finished Luggage Door Openings

Options

THROUGHOUT (Interior)

- 6-Gallon LP Gas/120V DSI (Direct Spark Ignition) Water Heater
- 13,500 BTU Air Conditioner
- Water Purifier
- Heated Holding Tanks
- Laminate Wood Flooring
- Dual Pane Windows
- Lounge Recliner
- CO Detector/Alarm (Standard Feature as of 01/01/05)
- Day/Night Shades

GALLEY

- 6-Panel Refrigerator Door
- Free Standing Table & Chairs

THROUGHOUT (Exterior)

- Bicycle Rack Receiver
- Custom Wheels
- Spare Tire

STORAGE

- Exterior Garage Storage (Available on Select Models)

* Denotes Fleetwood's Key Features

Weights and Measurements for Prowler Regal AX6

WEIGHTS	FIFTH WHEELS								TRAVEL TRAILERS		
	285RLS	295RLTS	305RLDS	345RLTS	365BSQS	365FLTS	385FKQS	395RL5S	300FQS	330FKDS	3902BDS
GVWR (lbs.)¹	10,400	12,000	11,600	14,000	14,100	13,500	15,200	15,350	9,600	11,100	11,200
Gross Dry Weight (lbs.)^{2,6}	8,154	9,067	9,087	10,456	11,098	10,220	12,423	12,952*	6,842	8,388	8,858
Max Carrying Capacity (lbs.)^{3,6}	2,246	2,933	2,513	3,544	3,002	3,280	2,777	2,398*	2,758	2,712	2,342
Hitch Dry Weight (lbs.)^{2,6,9}	1,694	1,886	1,588	2,362	2,143	1,656	2,310	2,098*	836	1,072	853
DIMENSIONS AND CAPACITIES											
Length (Feet and Inches)^{4,6,8}	30'4"	30'11"	31'11"	35'11"	37'11"	37'9"	39' 11"	39' 7"	31'10"	34'10"	39'7"
Height (Feet and Inches)^{5,6}	11'9"	12'5"	12'5"	12'6"	12'6"	12'6"	12' 6"	12' 6"	10'1"	10'3"	10'3"
Fresh Water Holding Tank (gal.)^{6,7}	40	40	40	40	40	40	40	40	40	40	40
Grey Water Holding Tank (gal.)^{6,7}	40/40	40	40/21	40	40	40	61	61	40	40/21	40
Black Water Holding Tank (gal.)^{6,7}	40	40	40	40	40	40	40	40	40	40	40
LP Gas Capacity (lbs.)^{6,7}	60	60	60	60	60	60	60	60	60	60	60
Tire Size (Load Range)	ST225/ 75R 15(C)	ST225/ 75R 15(D)	ST225/ 75R 15(D)	ST235/ 80R 16(D)	ST235/ 80R 16(D)	ST235/ 80R 16(D)	LT235/ 85R 16(G)	LT235/ 85R 16(G)	ST225/ 75R 15(C)	ST225/ 75R 15(D)	ST225/ 75R 15(D)

- GVWR (Gross Vehicle Weight Rating): is the maximum permissible weight of this trailer when fully loaded. It includes all weight at the trailer axle(s) and tongue or pin.
- All dry weights are based on the standard model and do not include optional features or equipment.
- Maximum Carrying Capacity is determined by subtracting Gross Dry Weight from GVWR. Maximum Carrying Capacity includes all fluids, optional features, equipment, and personal cargo.
- Trailer length includes 3' 6" for hitch; fifth wheel includes standard pin box.
- Add 9" if equipped with optional roof air conditioner.
- Approximate.
- Water weight equals 8.3 lbs per gallon. LP Gas weight equals 4.2 lbs per gallon.
- Add 10" if equipped with optional spare tire and carrier.
- Hitch weights are dependent upon how the trailer is equipped with options, on-board cargo and tank fluid levels. Actual hitch weights may be higher or lower than shown. It is recommended that the tow vehicle and hitch for your trailer have sufficient capacity to accommodate actual usage.

* = Estimated Weights

IMPORTANT— PLEASE READ: Product information, photography and illustrations included in this publication were as accurate as possible at the time of printing. For further product information and changes, please visit our website at www.fleetwoodrv.com or contact your local Fleetwood dealer. Prices, materials, design and specifications are subject to change without notice. All weights, fuel, liquid capacities and dimensions are approximate. Fleetwood has designed its recreational vehicles to provide a variety of uses for customers. Each vehicle features optimal seating, sleeping, storage and fluid capacities. The user is responsible for selecting the proper combination of loads (i.e., occupants, equipment, fluids, cargo, etc.) to ensure that the vehicle's capacities are not exceeded.

What Drives You?

Maybe it's feeling like you're the only one on earth. Perhaps it's the unique sense of closeness with the great outdoors. Or, it might be the joy that comes from spending quality time with family and friends. Whatever the reason, we know that you have a strong drive to experience everything that comes with spending time on the road. And for more than 50 years, we've shared that passion with you. Because we're RV enthusiasts ourselves, you can see our passion in the vehicles we design and build. Own a Fleetwood, and you'll feel like you're not just traveling, but embarking on an experience unlike any other. Set your own course for adventure and get out there and explore the world around you. Once you do, you'll see what it is that drives us — it's you.

RV OWNERCARE*

The Fleetwood One-Year Hitch to Bumper Warranty Coverage*
This comprehensive program includes systems, appliances, components and construction – with no additional costs to you.

One-Year Full Warranty*

Leaving the Fleetwood dealership after you've purchased your RV doesn't mean leaving Fleetwood's commitment to your satisfaction behind. This complete warranty is unique because it's just that – complete.

Fully Transferable*

Because we don't hesitate to stand behind our products, the complete **warranty is fully transferable** during the 12 months of warranty coverage, which is a plus for resale value.

National Coverage

Traveling to Spokane? Buffalo? We've got you covered with one of the nation's largest trained service networks. In fact, **1,100 Fleetwood dealers** are just a phone call away.

**Require these features when you purchase your new RV...
Fleetwood does.**

CLUB FLEETWOOD As a Fleetwood owner, you're eligible to become a member of our owners' group, Club Fleetwood. It's a perfect way to meet other Fleetwood owners who love to travel to beautiful resorts and vacation spots all across America. Call (877) 577-2560 and join the fun! Or visit www.fleetwood.com/clubs to learn more.

FLEETWOODRV.COM To locate a dealer near you, visit our website or call 1-800-444-4905. We can also be contacted at Fleetwood Customer Relations, P.O. Box 7638, Riverside, CA 92513-7638.

IMPORTANT—PLEASE READ Product information, photography and illustrations included in this publication were as accurate as possible at the time of printing. For further product information and changes, please visit our website at www.fleetwoodrv.com or contact your local Fleetwood dealer. Prices, materials, design and specifications are subject to change without notice. All weights, fuel, liquid capacities and dimensions are approximate. Fleetwood has designed its recreational vehicles to provide a variety of uses for customers. Each vehicle features optimal seating, sleeping, storage and fluid capacities. The user is responsible for selecting the proper combination of loads (i.e.: occupants, equipment, fluids, cargo, etc.) to ensure that the vehicle's capacities are not exceeded.

Your local Fleetwood dealer is:

www.fleetwoodrv.com

*For complete info see your Fleetwood dealer. ©2004. Fleetwood Enterprises, Inc. Printed in the USA. Inventory control number PRO5F2 11/04.

treadlightly!
LEAVING A GOOD IMPRESSION

