

# SUNSEEKER

BY FOREST RIVER





2860 DS: BIRCH INTERIOR



Stand tall and enjoy the space. You'll find our 7' ceilings provide comfortable headroom as you move through the coach. Designer interiors and solid wood cabinetry bring refined living on the road. The flip-up counter top, on selected models, means additional counterspace for those moments when you need the extra room. Prepare your meals with ease.

# SUNSEEKER 2860 DS

## COMFORTABLE LIVING.

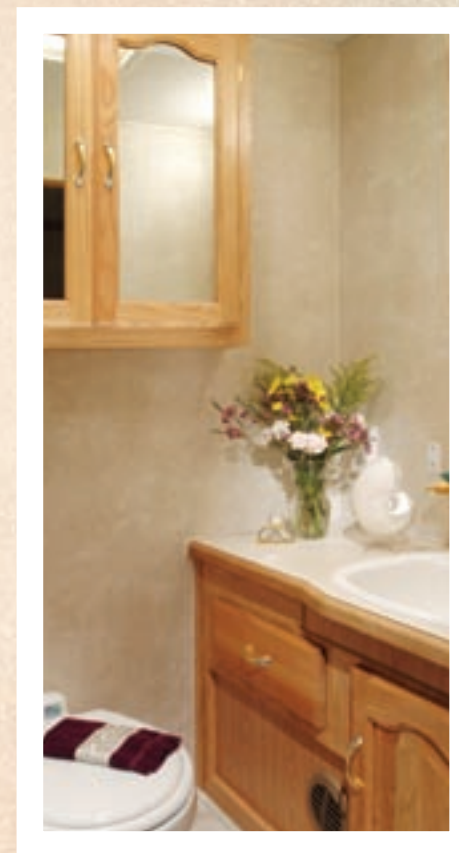
Careful thought is taken when designing the Sunseeker. The oversized 15,000 BTU air conditioning, combined with the 2" thick side wall construction, allows for efficient cooling. Comfort shouldn't be costly.

*Bring it along. The Sunseeker 2860 DS comes complete with a 5,000 lb. hitch, 7-pin connector and features radius style compartment doors.*



Save yourself the headache of planning your outfits. You'll find all the space you need and more in the **huge wardrobe area** in the bedroom. Hang-up your dress clothes for a night on the town or use the drawers for the kids play clothes. One thing is certain: there's plenty of room. Don't hold back. Pack all you want.

Put the plastic away. Every Sunseeker comes equipped with a residential-style **porcelain toilet**. You'll find the porcelain toilet is much easier to clean and is more sanitary than the competition's plastic commodes.





3100 SS: GRAPHITE BLUE INTERIOR

Choose the Sunseeker that best fits your lifestyle. Enjoy the **cab-over bunk area** which sleeps two comfortably, or try the optional **front entertainment center** with 24" flat screen TV.

Buckle-in. Our **dinette** comes standard with **four seat belts**; twice as many as other manufacturers. Safety is just as important as comfort.



3100 SS: MERLOT INTERIOR

# SUNSEEKER 3100 SS

## COMFORTABLE LIVING.

No more cold showers. Pull in after a long days drive and have hot water at your fingertips with Sunseeker's gas/electric DSI water heater. The quick recovery water heater provides all the hot water you need to freshen up and enjoy the evening.

*Slide-out awnings come standard and protect your slide-out from collecting water and debris.*



The Sunseeker's handy convenience center allows you to access everything from the slide-out to the power generator, all in one location.

Sleep like a baby. The queen bed hosts a **deluxe innerspring mattress** with matching bedspread and pillow shams to keep with the interior design. Sleep while she reads with the **adjustable reading lights**. Place your book on the convenient night stand at the end of the chapter.

# STANDARDS AND OPTIONS

## **Warranty:** *Standard features*

- 12 Months/12,000 miles basic limited warranty
- 3 Years/36,000 miles chassis warranty

## **Systems:** *Standard features*

- Battery disconnect
- Water heater bypass kit
- Water purification system
- Deep cycle coach battery
- 30 amp, 120 volt distribution panel & 30' power cord
- 55 amp, 12 volt power converter
- Six gallon gas/electric electronic ignition DSI hot water heater
- 30,000 BTU electronic ignition furnace
- Arctic package (cold weather package)
- Remote emergency start
- Cable/TV and phone jacks

## *Optional features*

- 2nd auxiliary deep cycle coach battery
- 15.0 BTU roof air conditioner
- 4.0 Onan generator
- 4.0 Generac generator

## **Exterior**

- 2" laminated filon sidewalls, vacuum bonded with aluminum frame structure, steel backers & block foam insulation
- A & E slide out awnings
- All radius style exterior doors
- Aluminum running boards
- Entry door with screen door & dead bolt door lock
- Lockable rotocast pass-through storage compartments with lights
- Patio light
- 110 Volt, GFI protected exterior receptacle
- Entry assist handle
- "Easy-Dump" valve dump stations
- "Easy-Fill" exterior water fill stations
- Entry step light
- Chrome hub caps
- Tinted sliding windows
- Deluxe break-away mirrors
- 5,000 lb. Tow hitch with 7-pin connector

## *Optional features*

- Deluxe A & E Awning
- Electric entry step
- Stainless steel wheel liners
- Spare tire
- Roof rack & ladder (Ladder only on 2450S)
- Outside shower

## **Cab Area**

- AM/FM/CD player
- Upgraded driver & passenger seats
- Cab area privacy curtains
- Dual 12 volt power points
- Cruise control

## *Optional features*

- Power windows & locks

## **Galley Area**

- Single lever chrome faucet
- Three burner range with oven
- Flush mount two door refrigerator/freezer
- Solid oak edge countertops & dinette tables
- Range hood with fan & light with bi-fold range cover
- Residential-style drawer construction with oak face fronts and metal guides
- Microwave oven
- Flip-up counter top extensions

## *Optional features*

- Refrigerator door raised oak door panels

## **Bathroom Area**

- Large medicine cabinet with mirrored oak cabinet doors
- Deep sink with dual control faucet
- Porcelain toilet
- Frosted glass shower door with heavy duty frame (2900, 2860 DS, 3100 SS)
- Raised six panel oak bathroom door
- Bath amenity package (towel bar, tissue, tooth brush, & soap holder)
- Electric roof vent fan
- Wall mount mirror
- Molded ABS shower pan & surround
- Shower head with flexible hose extension
- Shower sky light
- Light switch

## **Bedroom Area**

- Innerspring mattress
- Bedspread with pillow shams
- TV shelf with AC receptacle & cable TV jacks
- Adjustable reading lights
- Night shades with upscale window treatments
- Bedroom stereo speaker package
- Bi-fold privacy door
- Light switch

## *Optional features*

- Twin beds with innerspring mattresses (NA on 2200, 2450 S & 2860 DS)
- Bunk beds with innerspring mattresses (NA on 2200, 2450 S & 2860 DS)
- Rear bedroom window

## **Living Room Area**

- Light oak wood cabinetry throughout
- Pewter grab handles & hinges
- 2-way sofa with convertible sleeping/removable arms/high rub fabrics
- Night shades with deluxe window treatments
- Cut glass lighting package
- 7' ceiling height
- Seat belts at every sofa & dinette location
- Light switches

## *Optional features*

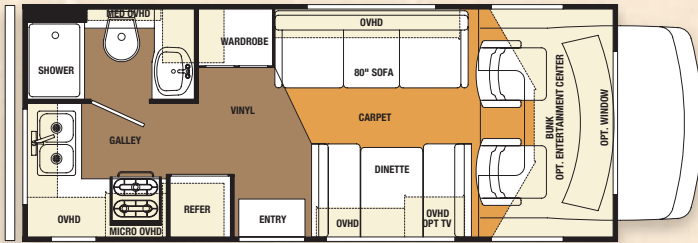
- Raised panel oak doors
- Cab over entertainment center with 24" flat screen TV
- Deluxe TV with built in VCR
- Cab over bunk window
- Vinyl floor throughout in place of carpet



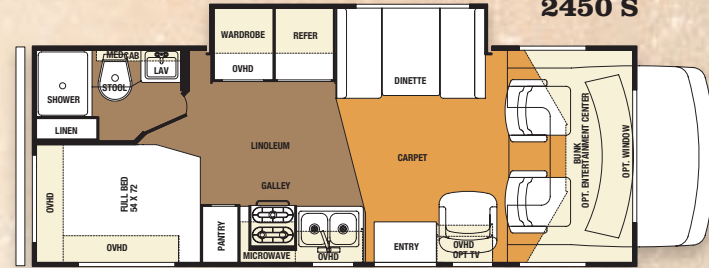
*The Sunseeker Class C motorhome is built to exacting specifications for superior quality and finish in our state-of-the-art production facility. Here, skilled workers assemble each Sunseeker with pride, knowing that a satisfied customer is often a repeat customer.*

# SUNSEEKER FLOORPLANS

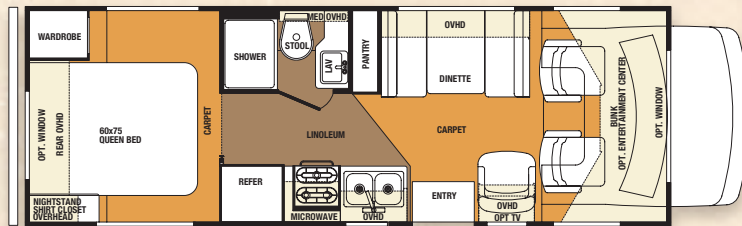
2200



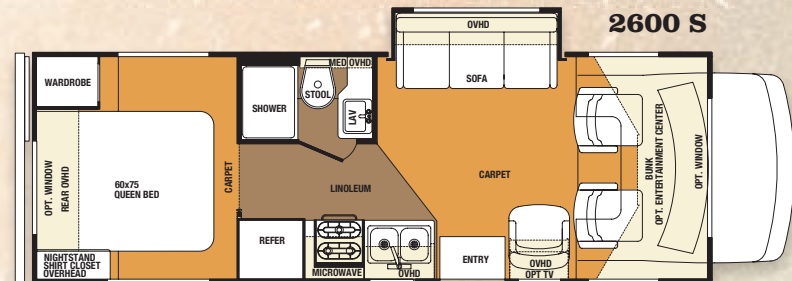
2450 S



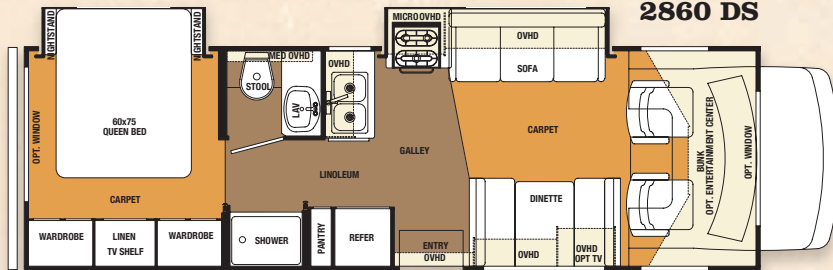
2600



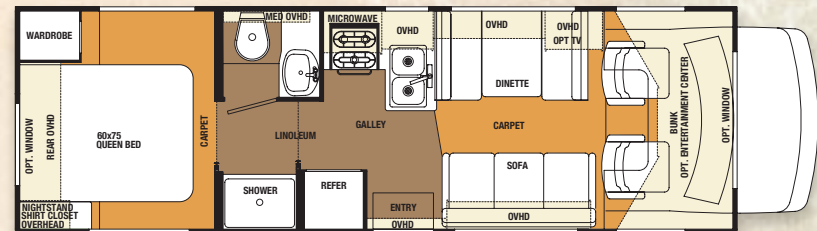
2600 S



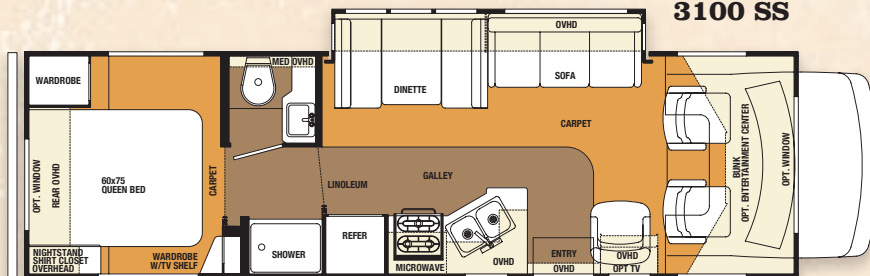
2860 DS



2900



3100 SS



# MODEL SPECIFICATIONS

## *Ford Chassis*

	2200	2450 S	2600	2600 S	2860 DS	2900	3100 SS
WHEELBASE	178"	166"	188"	188"	202"	188"	220"
GVWR	14050	14050	14050	14050	14050	14050	14050
GAWR	9450	9450	9450	9450	9450	9450	9450
GAWF	4600	4600	4600	4600	4600	4600	4600
UVW	10190	11150	10140	10430	12570	11250	12370
GCWR	20000	20000	20000	20000	20000	20000	20000
NCC	3860	2900	3910	3620	1480	2800	1680
FUEL CAPACITY (gal.)	55	55	55	55	55	55	55
DIESEL ENGINE OPT.	YES	YES	YES	YES	NA	YES	NA
LENGTH	24'2"	26'	27'7"	27'7"	30'6"	29'9"	31'8"

## *Chevy Chassis*

WHEELBASE	NA	167"	189"	189"	NA	189"	NA
GVWR	NA	12300	12300	12300	NA	12300	NA
GAWR	NA	4300	4300	4300	NA	4300	NA
GAWF	NA	8600	8600	8600	NA	8600	NA
UVW	NA	9999	10344	10655	NA	10841	NA
GCWR	NA	17000	17000	17000	NA	17000	NA
NCC	NA	2301	1956	1645	NA	1459	NA
FUEL CAPACITY (gal.)	NA	55	55	55	NA	55	NA
LENGTH	NA	26'10"	28'5"	28'5"	NA	30'7"	NA

## *Capacities & Dimensions*

EXT. HEIGHT WITH A/C	11'6"	11'6"	11'6"	11'6"	11'6"	11'6"	11'6"
EXT. WIDTH	101"	101"	101"	101"	101"	101"	101"
INT. WIDTH	96"	96"	96"	96"	96"	96"	96"
INT. HEIGHT	84"	84"	84"	84"	84"	84"	84"
FRESH WATER (GAL)	25	44	40	40	44	40	40
GREY WATER (GAL)	27	20	27	27	47	47	47
BLACK WATER (GAL)	27	27	27	27	27	27	27
L.P. CAPACITY (GAL)	9.8	9.8	9.8	9.8	9.8	9.8	9.8
AWNING LENGTH	12	12	12	12	16	14	16
WATER HEATER (GAL)	6	6	6	6	6	6	6



Forest River, Inc. 914 C.R. 1 Elkhart, IN 46514  
800.445.2825, 574.262.2212 [www.forestriverinc.com](http://www.forestriverinc.com)

All specifications contained herein are based on the latest product information at time of printing. Forest River reserves the right to make changes in colors, materials, equipment and specifications at anytime without notice and assumes no responsibility for any errors in this brochure.

YOUR SUNSEEKER DEALER