

Fuzion

TOY HAULERS

# LIVE FOR IT



# The ultimate ownership experience.

The goal of Keystone RV Company is to surprise and delight our owners at each and every touchpoint. We're happy when our campers are happy, and we are committed to providing the very best ownership experience in the industry.



**Keystone RV  
Company**

## 1 EASIER SHOPPING.

At Keystone, we make choosing an RV as easy as finding the Big Dipper on a dark summer night. With comprehensive online product information, Key Connect™ product advisors, and an unparalleled dealer network, we will help you select the perfect RV for your family's adventure.

## 2 INNOVATIVE THINKING.

The road's a nicer place when you have the industry's smartest features behind you. Keystone leads the pack in patented innovations that make our RVs safer, more comfortable, and easier to operate.

## 3 LONG HAUL QUALITY.

To keep you on the road, there are certain things we just won't build a Keystone RV without. Game-changing features like our Unified Wiring Standard, Tru-Fit™ five-point slide construction, and no-fail Tuf-Lok™ A/C duct joiners combined with exhaustive testing and inspections are some of the reasons why Keystone is able to offer our owners the industry's best 3-year limited structural warranty.

## 4 WORRY-FREE CUSTOMER SERVICE.

Wherever the road takes you, you're never too far from an authorized Keystone service center. We also offer live service assistance, ultra-fast parts shipping, online maintenance tips and tricks, and a single-point warranty claims policy. *That's* peace of mind.

## 5 KEYSTONE NATION.

When you choose Keystone, you become a part of one of the largest camping families in the country. We're Keystone Nation. A friendly community where people share photos, travel tips and amazing stories – all in the spirit of camaraderie and adventure. Come join us.

Experience the Fuzion lifestyle by visiting [#keystonefuzion](#)



# Keystone EXCLUSIVE Innovations

Year after year, Keystone RV's experienced team delivers Built For the Long Haul quality you expect and exclusive innovations you won't find anywhere else.



**3-year Limited Structural Warranty,  
1-year Limited Base Warranty**

Every new Keystone RV comes with the industry's best three-year limited structural warranty AND a one-year limited base warranty. Ask your dealer, visit [keystonerv.com](http://keystonerv.com), or call Keystone owner relations for details.



**4G LTE and Wi-Fi Prep**

All units are equipped with a new Furrion® antenna that integrates 4G LTE and Wi-Fi with standard VHF/UHF/AM/FM reception.



**KeyTV™**

No more connection guesswork or poor reception. KeyTV offers a game-changing, single point of control of over-the-air, cable, and satellite feeds. Visit us online for more information.



**Color-Coded Wiring**

Easy-to-trace circuits simplify electrical and entertainment system troubleshooting.



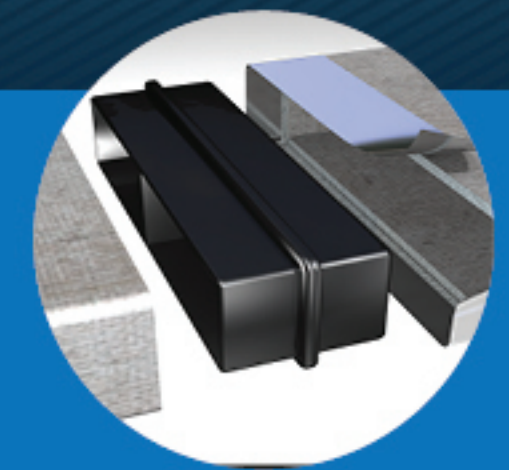
**Automotive-Grade Painted Fiberglass Cap**

Six layers of stunning and resilient automotive-grade paint with Key-Shield™ paint technology.



**In-Floor Heating Ducts**

Ducting allows for more airflow that distributes heat evenly for optimal comfort.



**Tuf-Lok™ A/C Duct Joiners**

Crush resistant design securely joins A/C ductwork, drastically reducing chilled-air leaks and boosting cooling efficiency and comfort.



**Tru-fit™ Slide Construction**

A more durable slide room design that minimizes functional motor and structural stress, resists leaking.

# FUZION



FUZION | TOY HAULERS

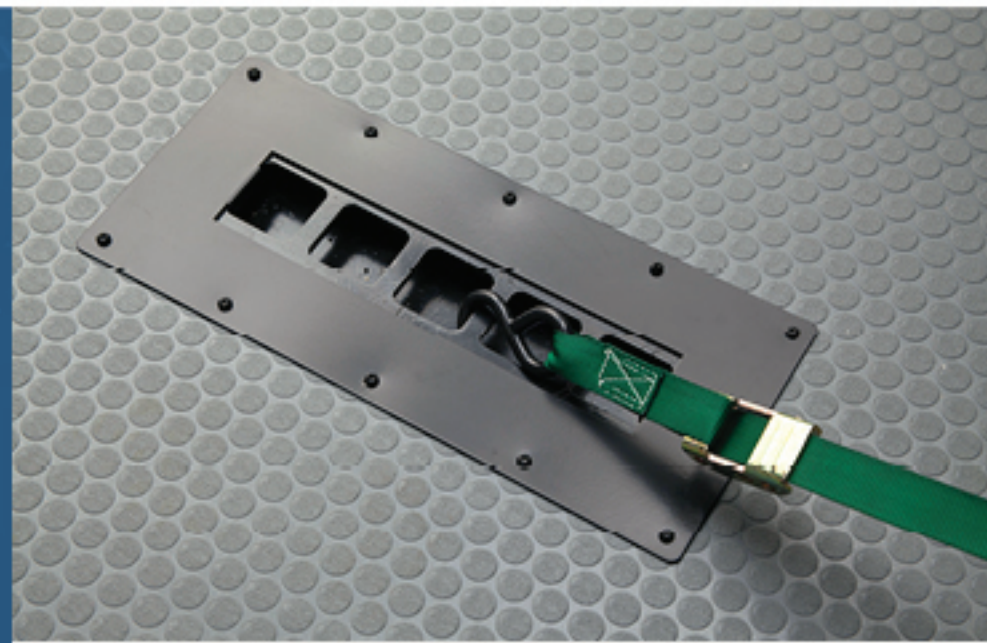
## Experience your adventure in a Fuzion toy hauler.

Keystone's Fuzion toy haulers are designed for customers with a grab-the-bull-by-the-horns attitude. We don't roll with the norm—we set the curve. Fuzion's obsessive out-of-the-box thinking has delivered groundbreaking floorplans and features specifically designed for the thrill-seekers. With innovations like frame-welded tie-downs, OmniChill™, king-sized Glide-A-Beds™, and Super Storage, Fuzion delivers unprecedented performance and maximum value to those who live for adventure.

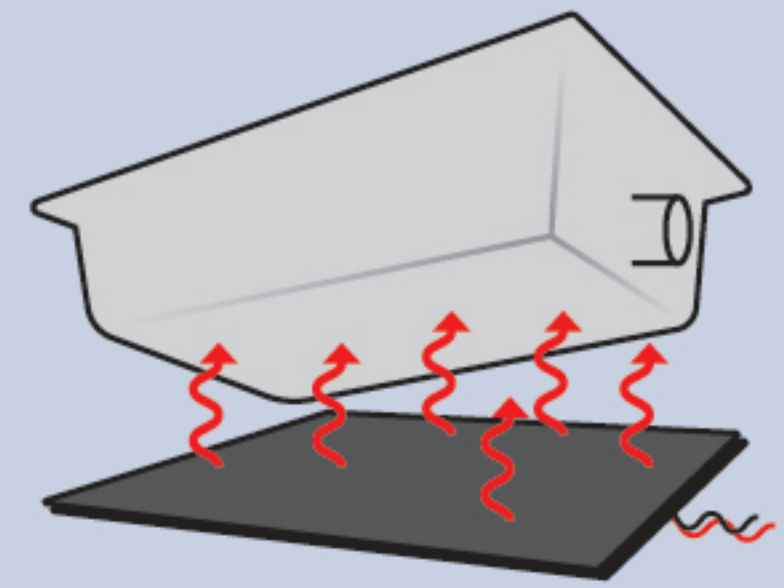
For more information, please visit [kestonerv.com/fuzion](http://kestonerv.com/fuzion)

### Power Performance

We build each Fuzion with the goal of creating an unmatched adventure machine both inside and out.



**Exclusive Adjust-A-Track™ Frame-welded Tie Down System**  
Fuzion has 38 points of contact welded into its frame, each supporting up to 5,000 lbs.



**Thermal Heat Pad Under Tanks**  
Additional layer of insulation prevents tanks from freezing.



**MORryde® CRE/3000 Suspension**  
Increases dynamic axle travel up by to three inches for smoother and more stable towing.



**Jensen® Entertainment Package Throughout**  
Designed for RV's Jensen components are strenuously tested to endure vibration, UV exposure humidity and temperature fluctuation.



**Under-Bed Storage with Glide-a-Bed™ System**  
Glides to center of room for walk around king bed.



**Exterior HDTV**  
Outdoor entertainment at its finest, powered by our EXCLUSIVE KeyTV™ system.



**Laundry Hamper In Master Bath**  
Conveniently built-in, no need to bring additional storage.



**CNC Routed Sidewalls**  
Ensures perfectly cut / perfectly fit windows, doors, and slide-boxes. A better seal around windows and doors.



**Exterior Utility Storage**  
Exterior storage for maintenance items, chemicals, liquids etc. Includes a workstation with 110V outlets and USB power ports.



**MORryde® Zero-G Ramp Door w/ Fast Track Patio System**  
Spring-assisted garage door opens and closes weightlessly. Comes with a side entrance patio system to extend your living space.



**Exterior Convenience Center**  
Complete with easy-to-read operation instructions for hook-ups, dry camping, black tank flush, winterizing, and more.



more product detail at  
[www.keystonerv.com/fuzion](http://www.keystonerv.com/fuzion)



## Pushing the Limits

Fuzion's is bringing an exciting new attitude to toy hauler interior design. Bright, fresh and polished, we have captured the best of contemporary trends and are introducing them in this year's lineup. Sophisticated gray painted cabinets, subway tile backsplash and fireplace surround, light solid surface countertops, and swivel-out barstools combine to give Fuzion a look like nothing else on the market.

Redesigned master suite and ultra-stylish furniture with heated seats, massage, LED lights and USB ports.



369 Bedroom

Spacious, multi-use garage with upgraded sidewall protection that provides stylish durability.



369 Bedroom Closet



369 Interior



369 Garage





more product detail at  
[www.keystonerv.com/fuzion](http://www.keystonerv.com/fuzion)

- 30" convection microwave provides a residential appliance appearance and functionality
- Skylight in every kitchen provides natural light
- Ultra-stable and secure MORryde® Step Above™ steps
- Painted front cap with KeyShield™ technology to protect from fading and road hazards
- Six-point hydraulic level-up system for quick and convenient set-up
- 5500 Onan Generator
- MORryde® CRE 3000 suspension system for ensuring superior towability
- 16" American made Goodyear® tires
- Electric heat pads on tanks provide extended seasonal camping
- Exterior utility center with LED light, USB port and 110V outlet
- Outside convenience center with functional labeling system

## Keystone Exclusive



## Operate three A/C units simultaneously for the most cooling power in the industry.

Keystone's Fuzion engineering team partnered with Dometic to build a game changing air conditioning system for our owners who like to play in hotter climates. With Omni Chill, Fuzion owners can operate all three of their toy hauler's air conditioners simultaneously on a 50 AMP circuit. Other manufacturers' systems require owners to cycle their air conditioners, running only two units at a time. Testing has shown that OmniChill's revolutionary technology keeps coaches up to 8°F cooler than our competitors in 100°F ambient temperature.



## iN-Command® Generation 3 with Global Connect

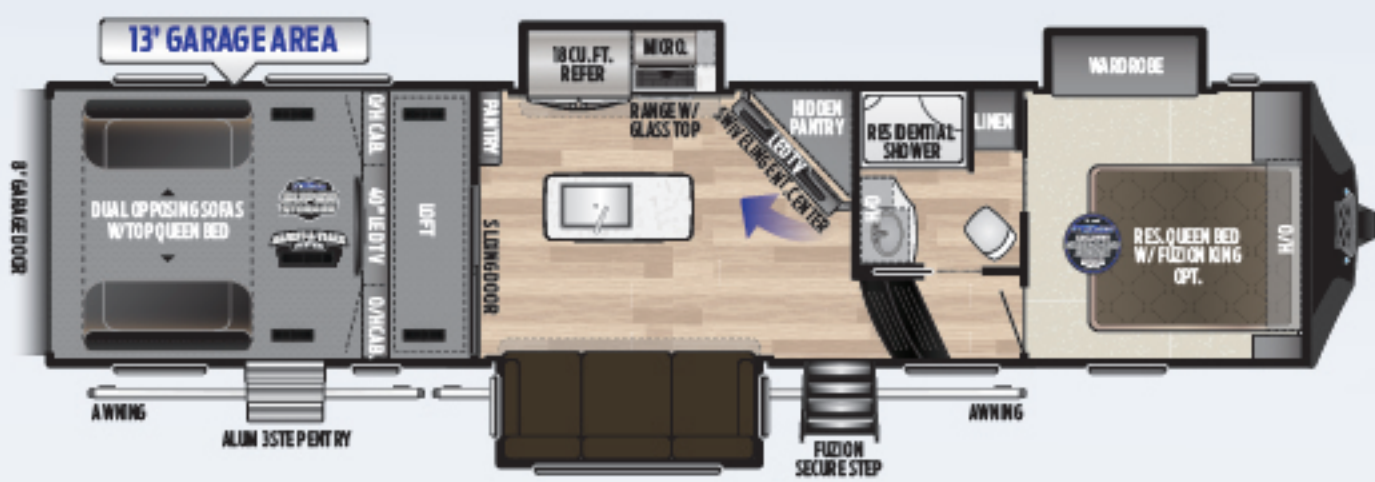
Systems monitoring and total control over power, slide rooms, awnings, HVAC and more from a central monitoring panel or your smartphone.



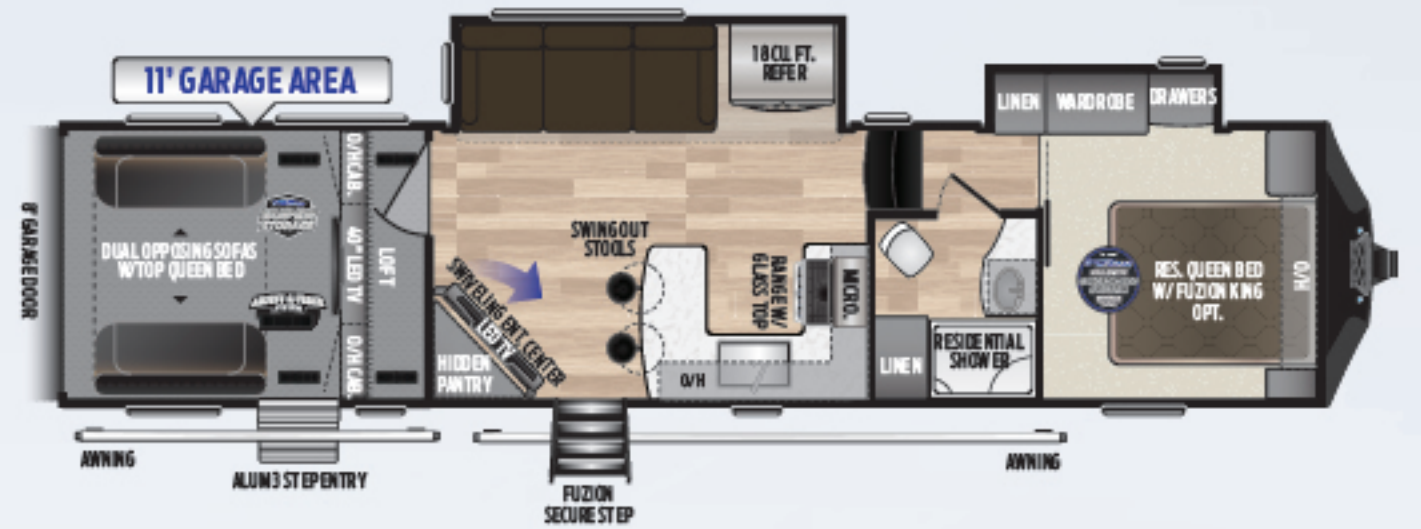
NEVER LOSE YOUR CONTROLLER · MULTIPLE USERS\* · WHEN YOU HAVE YOUR PHONE, YOU'RE IN-COMMAND

\*Multiple users with Android phones (N/A with iOS)

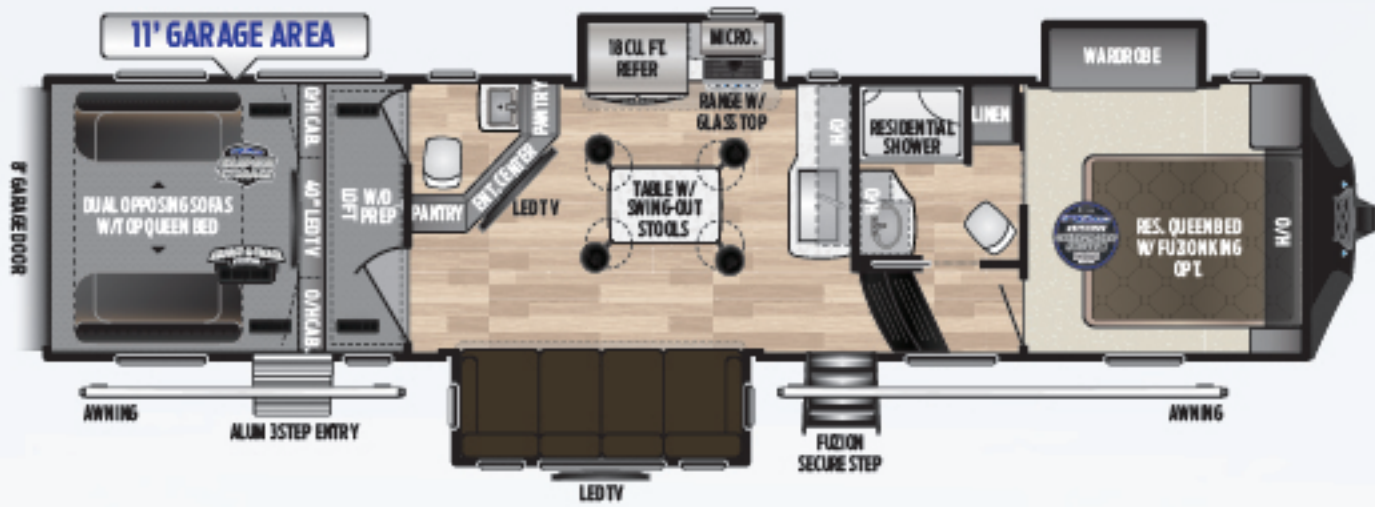




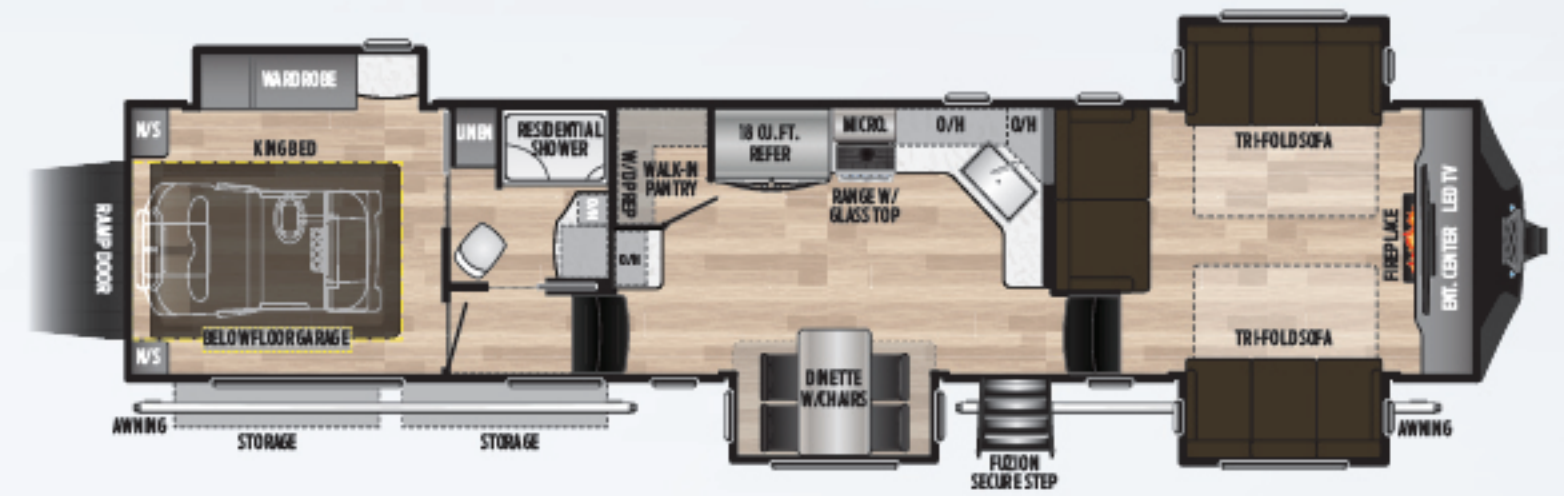
**357** Island kitchen, hidden pantry, 13' garage, tandem-axle  
Weight: 13650 LBS. | Length: 39' 0"



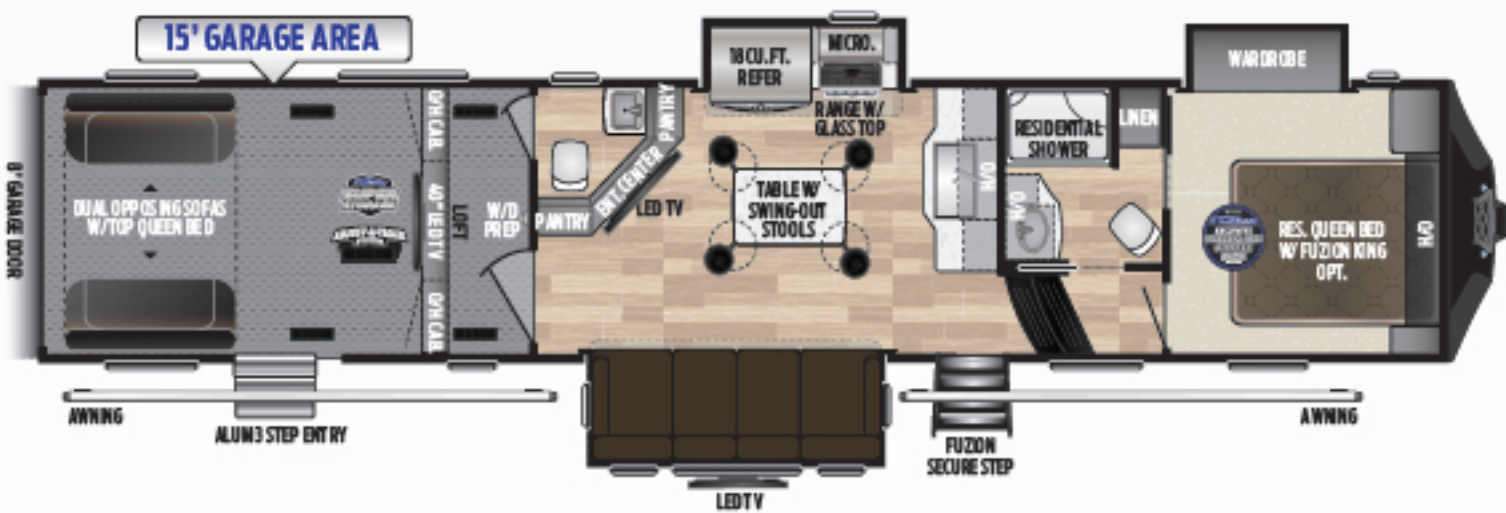
**369** Bar top seating, hidden pantry, 11' garage, tandem-axle  
Weight: 13290 LBS. | Length: 39' 0"



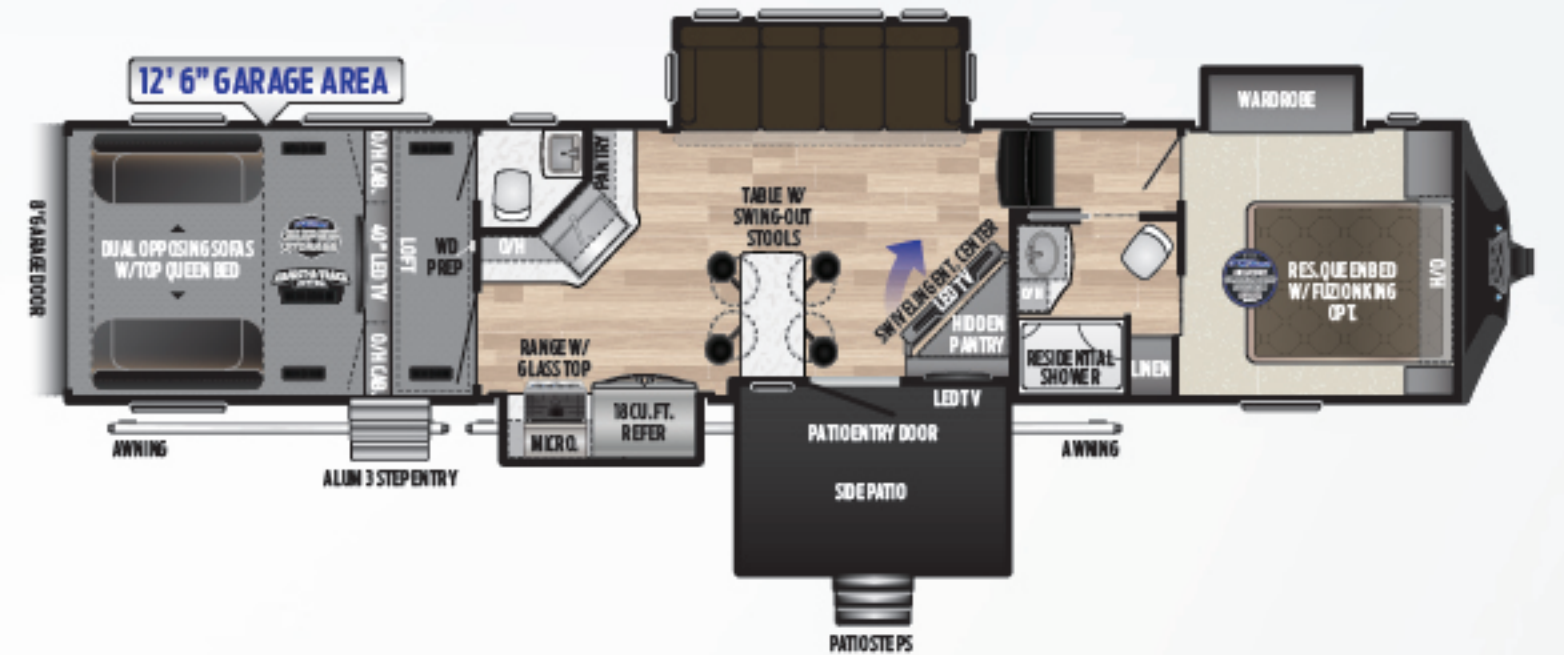
**373** Island kitchen, swing out stools, 1 1/2 bath, 11' garage, tandem-axle  
Weight: 14054 LBS. | Length: 39' 0"



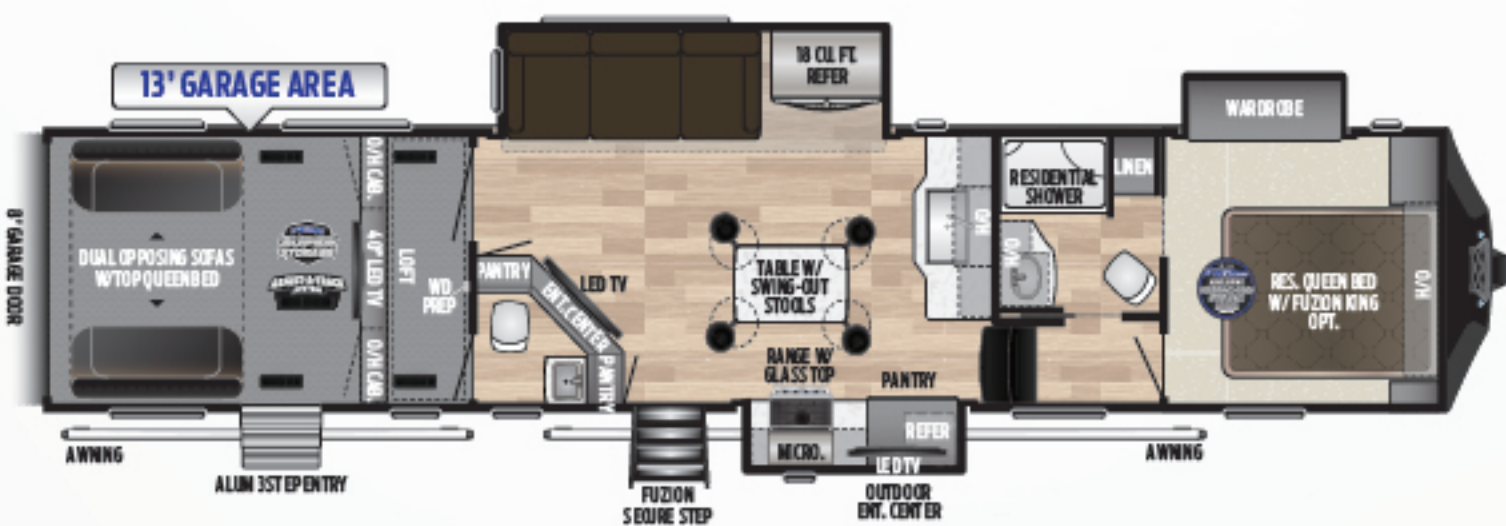
**410** New front living, 110"x63" toy box, triple-axle  
Weight: 14475 LBS. | Length: 43' 7"



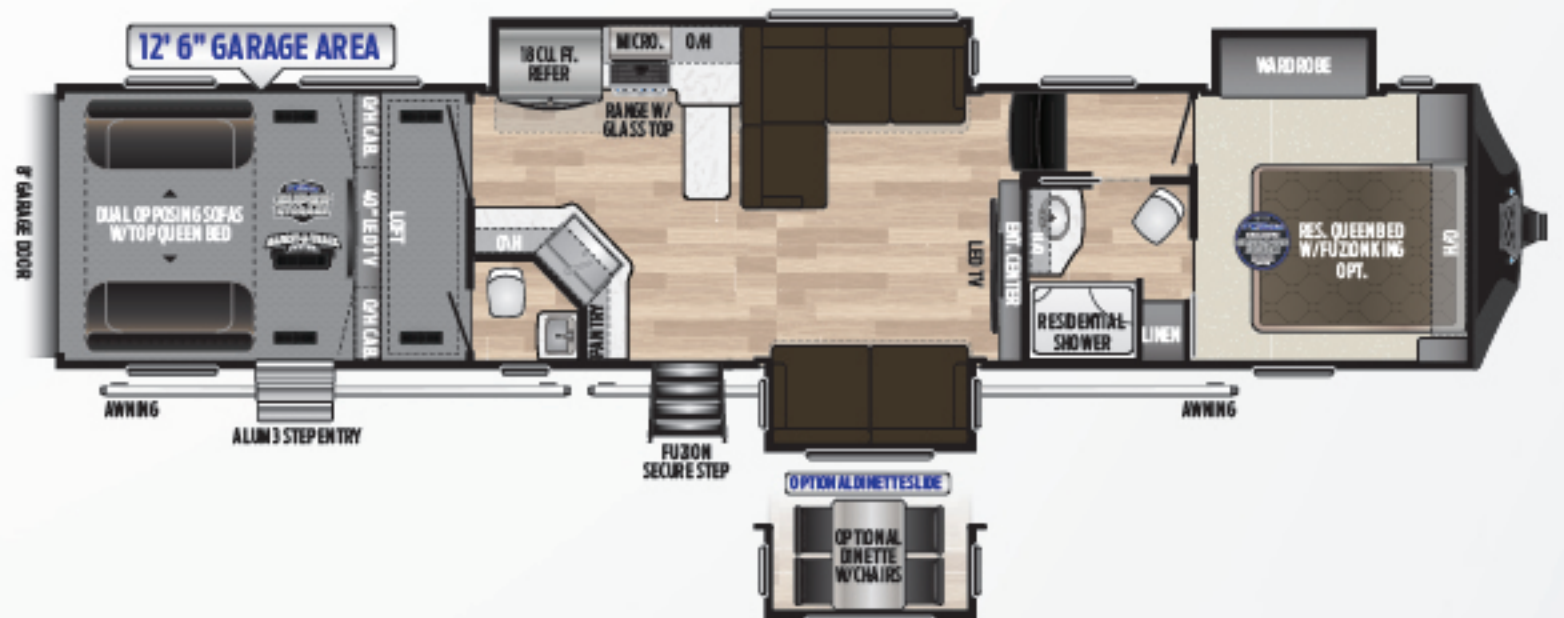
**419** Island kitchen, swing out stools, 1 1/2 bath, 15' garage, triple-axle  
Weight: 15240 LBS. | Length: 44' 0"



**424** Side patio, 1 1/2 bath, 12' 6" garage, triple-axle  
Weight: 15860 LBS. | Length: 43' 6"



**427** Island kitchen, swing out stools, 1 1/2 bath, 13' garage, triple-axle  
Weight: 15310 LBS. | Length: 43' 6"



**429** L-shaped sofa, 1 1/2 bath, 12' 6" garage, triple-axle  
Weight: 15385 LBS. | Length: 44' 0"

### FIFTH WHEELS

MODEL	WEIGHT	CARRYING CAPACITY	HITCH WEIGHT	FRESH WATER	WASTE WATER	GRAY WATER	LPG	LENGTH*	HEIGHT
357	13650	3350	3105	106	44	88	60	39' 0"	13' 1"
369	13290	3710	3015	106	44	88	60	39' 0"	13' 1"
373	14045	2955	3055	106	88	88	60	39' 0"	13' 1"
410	14745	4255	3650	106	44	88	60	43' 7"	13' 3"
419	15240	3760	3615	106	88	88	60	44' 0"	13' 3"
424	15860	3140	3630	106	88	88	60	43' 6"	13' 3"
427	15310	3690	3645	106	88	88	60	43' 6"	13' 3"
429	15385	3615	3535	106	88	88	60	44' 0"	13' 3"

DISCLAIMER: Product information is as accurate as possible as of the date of publication of this brochure. All features, floor plans, and specifications in this brochure are subject to change without notice. Please also consult Keystone's web site at [www.keystonerv.com](http://www.keystonerv.com) for more current product information and specifications. Tow Vehicle Disclaimer. CAUTION: Owners of Keystone recreational vehicles are solely responsible for the selection and proper use of tow vehicles. All customers should consult with a motor vehicle manufacturer or their dealer concerning the purchase and use of suitable tow vehicles for Keystone products. Keystone disclaims any liability or damages suffered as a result of the selection, operation, use or misuse of a tow vehicle. KEYSTONE'S LIMITED WARRANTY DOES NOT COVER DAMAGE TO THE RECREATIONAL VEHICLE OR THE TOW VEHICLE AS A RESULT OF THE SELECTION, OPERATION, USE OR MISUSE OF THE TOW VEHICLE. \*Length is defined as the distance from the centerline of hitch pin/coupler to rear bumper of trailer. Please review owner's manual prior to purchase for more information on service warranties, extended use, towing and maintenance. Owner's manuals can be found at [keystonerv.com](http://keystonerv.com).



### Make a Difference with Full-Body Paint

Kick your Fuzion up a notch with long-lasting, automotive grade full-body paint available in blue, red, gold and orange.



(4) color options

Get off the grid with the industry's best solar power system



## Introducing Keystone SolarFlex™

Eighteen months in the making, Keystone is proud to introduce a next generation solar power system that is smaller, operates at a higher voltage, and lasts longer than traditional offerings. By adding the optional SolarFlex system, campers expand their campsite options, can spend more time off the grid, and reduce their overall carbon emissions. Unlike noisy generators, solar operates soundlessly and is a safe way to provide power to the refrigerator while in transit. Lastly, Keystone's roof-mounted SolarFlex panels were designed to be durable and resistant to severe weather, including high wind, driving rain, heavy snow and hail.

# OMNI SHIELD

## Weather Protection Package

- » Omni Chill ¾ Ton high efficiency air conditioner system
  - » Highest insulation values in its class
- » Ducted heat into underbelly and storage compartment
  - » Ducted heat into garage
  - » Vented attic
- » Heat pads on holding tanks

### INTERIOR

Premium Jensen® Bluetooth compatible stereo with CD/DVD player, flat panel Jensen LED HDTV, sound bar, 2 all weather Sony exterior speakers, a,b, and c zone indoor/outdoor speaker switch, 3 way speakers

OmniChill™ a/c w/ thermo-plastic duct couplings

Insulated a/c ductwork

30" Convection microwave

21" 3-Burner Furrion® oven with glass top

18 cu. ft. refrigerator

Professional bottle opener

Bamboo sink covers

Residential cabinet hardware

Roller shades (living room, bedroom)

Night shades in garage

Solid wood drawer frames

80 lb. Rated full-extension ball bearing drawer guides

Recessed LED puck lighting throughout

Residential-style furniture w/ heated seats, LED lights, massage & 110V/USB ports

Stainless steel appliances

Fuzion sky-dome

30" Wide radius entry door with screen

KeyTV™ Satellite prep (bedroom, living room, garage, outdoor TV)

Digital TV antenna

60" X 80" residential size queen bed

Under bed storage

Full-size, one piece fiberglass shower w/seat

Fireplace w/surround

Adjustable, hand-held massaging shower fixture

Skylight over shower

Porcelain toilet with foot flush

Fantastic fan in commode room & kitchen

Mirrored medicine cabinet

Loft bunk ladder

40" X 80" Loft mattress

LPG detector

Carbon monoxide detector

Fire extinguisher

GFI duplex receptacles

### EXTERIOR

Painted front cap w/ Key-Shield technology

Aerodynamic fiberglass front cap with lights and improved turning radius

Generator prep with start / stop switch, hour meter And fuel gauge

Fuel station with 12v pump, dual 30-gallon fuel tanks, and static line

6-point hydraulic level-up system

MORryde® CRE 3000 suspension

Attic vents

Step light

LED security lights

LED cargo ramp loading lights

Compartment lights

LED tail/brake lights

Frameless tinted safety glass windows

Spare tire and carrier

Collapsible roof ladder

Dual, folding assist handles with padding on entry doors

Dual power awning w/LED lighting

LP quick connect

### GARAGE

Double electric beds with dual opposing sofas

Residential glass pass-through door

Washer/dryer prep

Upgraded sidewall protection

Metal ram air vents (2)

8' Ramp door

Gas/oil resistant tuff-ply flooring

Ducted A/C, ducted heat

Independent direct dump A/C

EXCLUSIVE KeyTV™ cable TV/satellite prep

Night shades

Adjust-A-Track frame welded tie-downs

### EQUIPMENT

Gen 3 iN-Command™ control system w/ Global Connect

7,000 Lb. Dexter® E-Z Lube® axles

Flipped axles

Electric 12" x 2" brakes on every wheel

16" Aluminum wheels

16" Goodyear® tires

5500 watt Onan generator w/ 30-gallon fuel tank

12-gallon gas / electric water heater with direct spark ignition

Low-rise aluminum entrance step

50 AMP service with detachable marine power cord

90 AMP converter

12V disconnect

Water heater bypass

Power tank flush on all black tanks

Enclosed termination valves

Outside shower

35,000 BTU furnace

Heated, insulated, enclosed holding tanks

Electric heat pads on tanks

MORryde® Secure Step™

Fast track 2.0 patio system with electric awning & patio step

### SAFETY

Fire extinguisher

Smoke detector

LP detector

CO detector

Safety chains

Emergency breakaway switch

### OPTIONS

Sliding rear patio door

Dual-pane frameless windows

King bed suite Glide-A-Bed™ system

Full-body paint

SolarFlex solar package

BUILT FOR THE LONG HAUL



PRINT 01.2019

