

DUTCHMEN CLASSIC

**1998
TRAVEL TRAILERS
& FIFTH WHEELS**



DUTCHMEN CLASSIC



CLASSIC VALUES

Step into a new Dutchmen Classic trailer or fifth wheel and enter a world where craftsmanship and quality still matter. You'll see our commitment to quality is second to none and our craftsmen are the finest in the industry. And it shows: from the superior design and construction that are at the heart of a Dutchmen to the high-quality appliances, beautiful oak cabinetry, luxurious fabrics and fine furniture, there is simply no other RV that gives you so much value for your dollar.

Whether you choose a trailer or a fifth wheel, you're sure to find a Dutchmen Classic floorplan that is perfect for your budget and your family's lifestyle. Our years of experience have taught us what you want and need in an RV, and we've brought it all together in the finest selection of floorplans available.

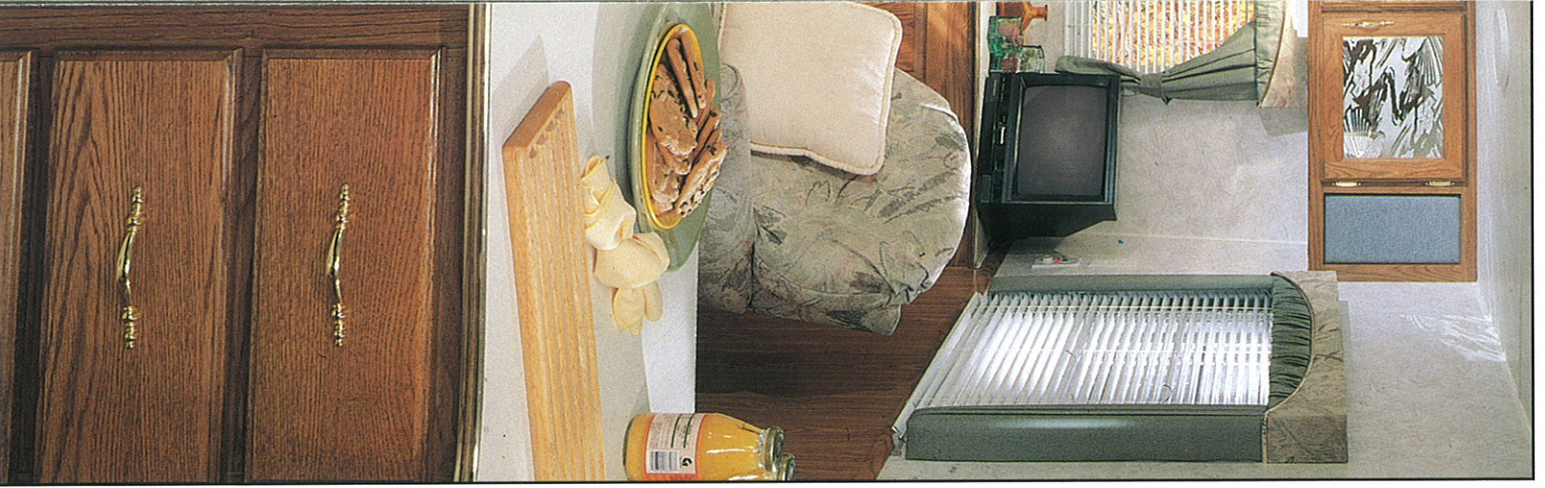
So step inside and see for yourself why we're so proud. You'll see why you should be the proud owner of a new Dutchmen Classic.





All Dutchmen Classic trailers and fifth wheels are designed to give you maximum livability. But the addition of a slide-out lends a spaciousness you never dreamed was possible in an RV and makes your Dutchmen Classic as comfortable as your home. Slide mechanisms are built for long, trouble-free operation and, of course, are covered by Thor's exclusive "2 + 2" Warranty: two years on structure and two years on major components.

Shown in



Entertainment centers will add even greater livability to your Dutchmen.



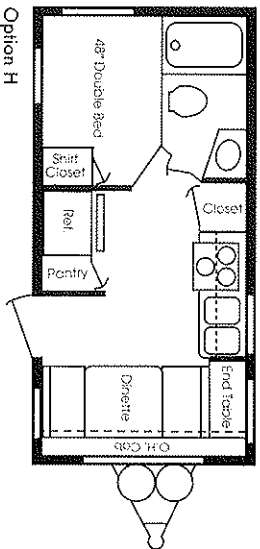
Upgrade your Dutchmen with solid oak cabinet doors and drawer fronts for increased beauty, durability, and value.

Travel in your Dutchmen is made more comfortable by the stylish, well-planned bathrooms, fitted with quality appliances and plenty of storage space. In some models, the bathroom can be closed off to form a convenient dressing room.



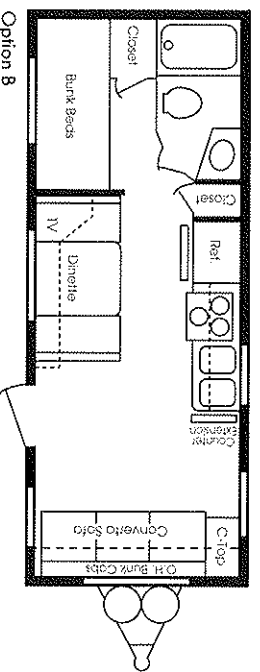
A bedroom slide, available in selected models, will give you spaciousness you never thought possible in a trailer of fifth wheel. And a hide-a-bed sofa in a slideout brings comfortable, restful sleep to the rest of your family or your guests.

19FD



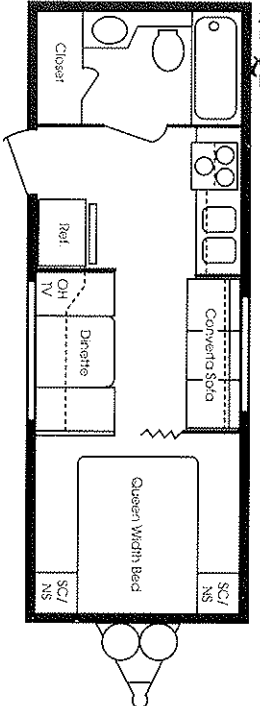
Option H

22BH

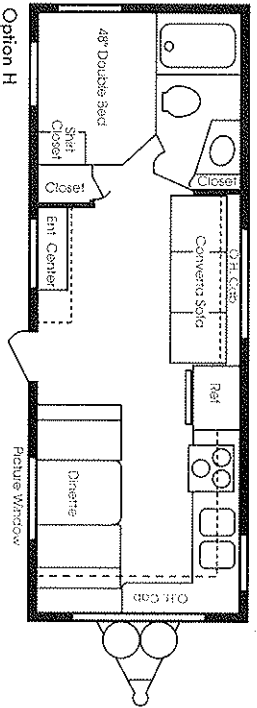


Option B

24QB

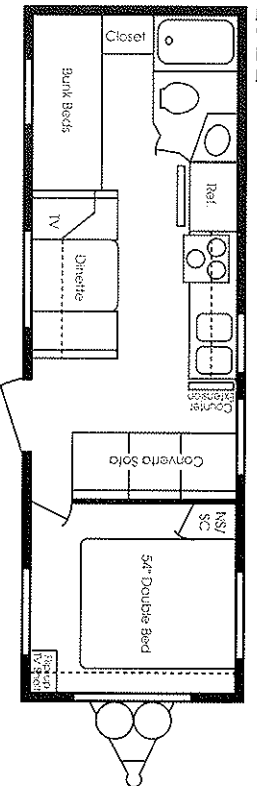


24PK

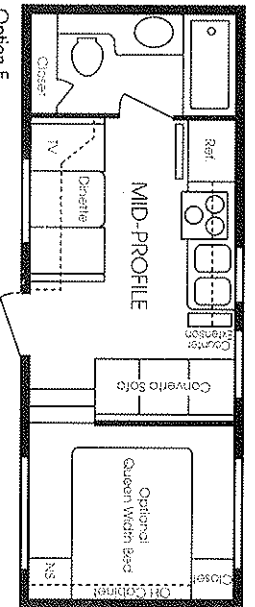


Option H

26B2



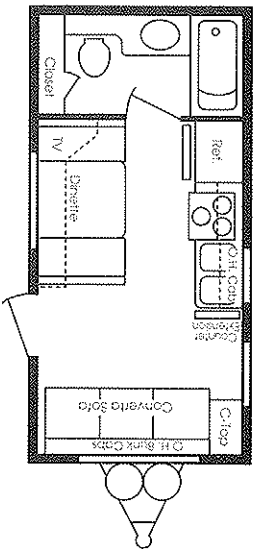
22RB-2



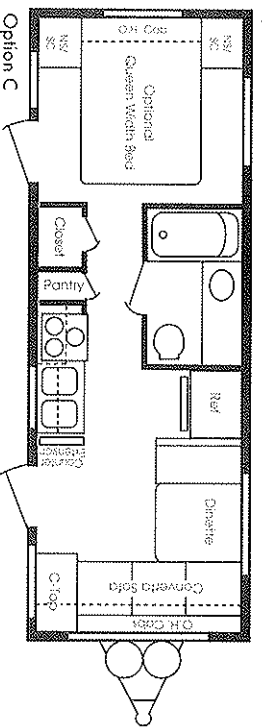
Option E

CLASSIC TRAVEL TRAILERS

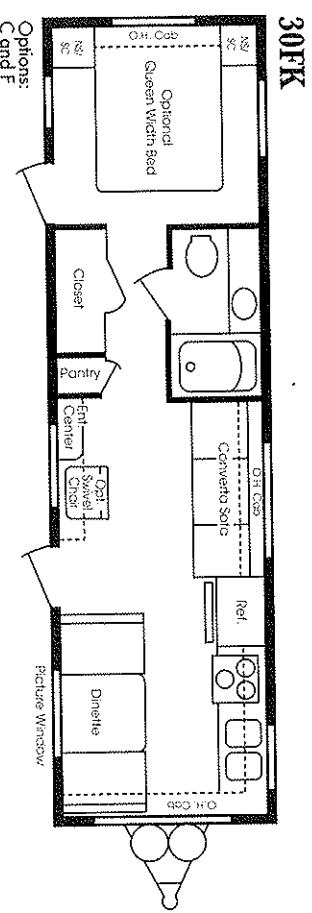
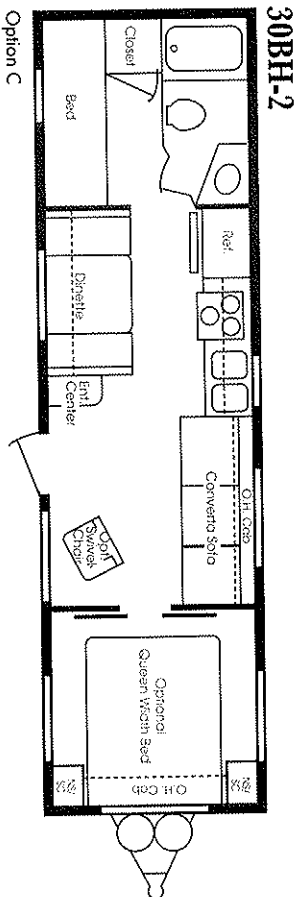
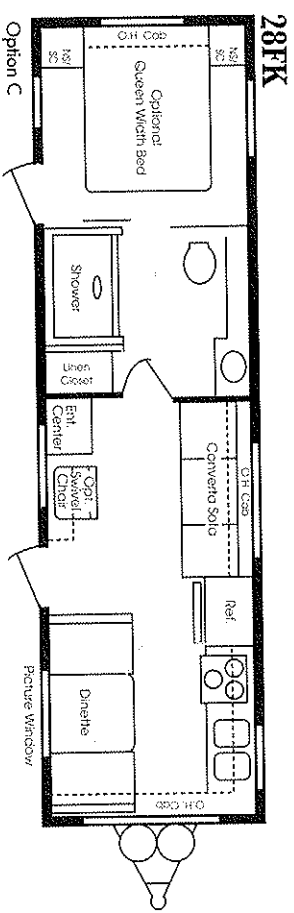
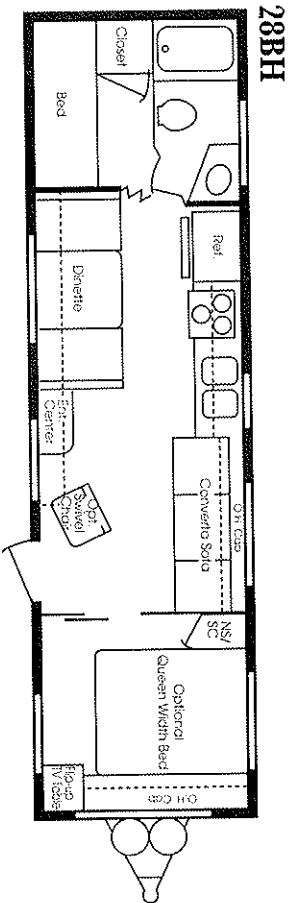
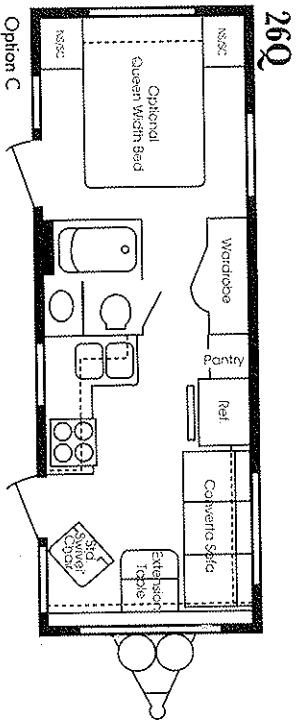
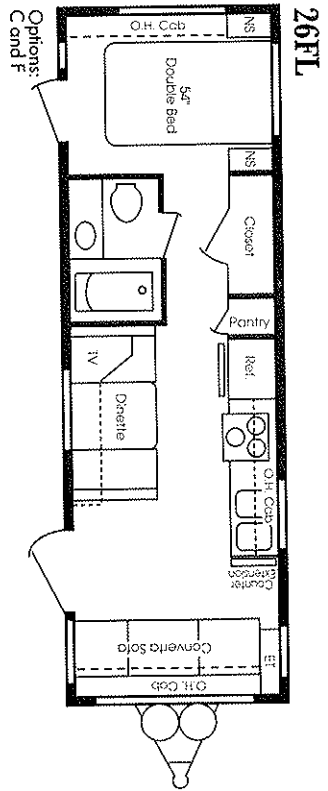
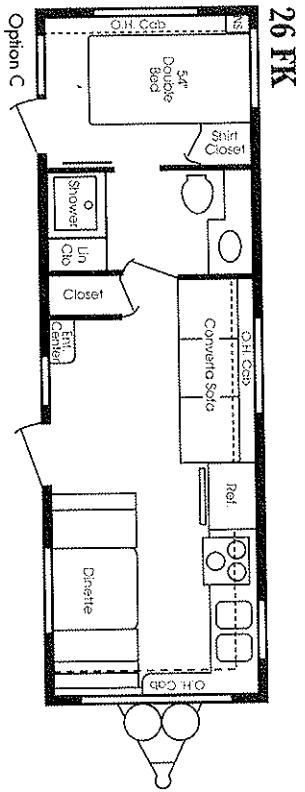
19RB



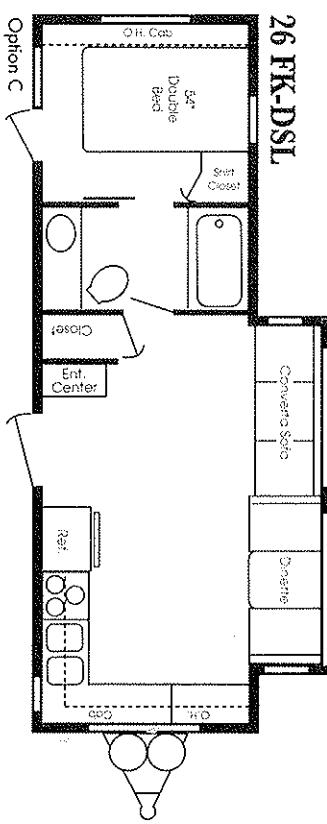
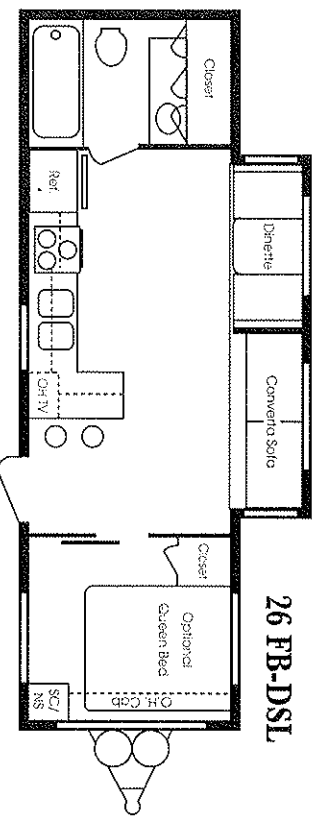
24FLD



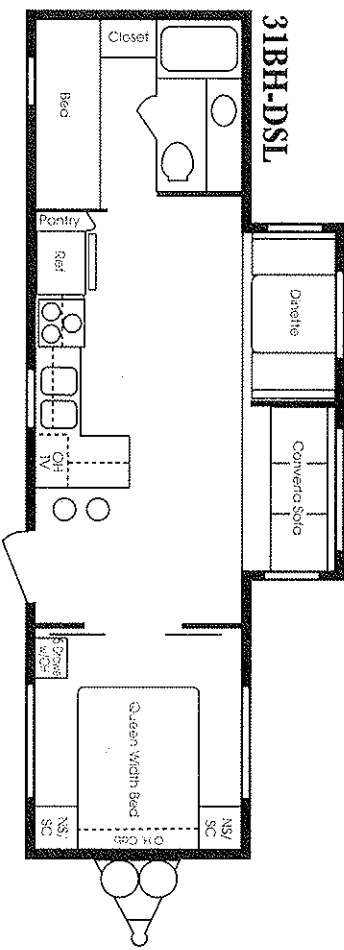
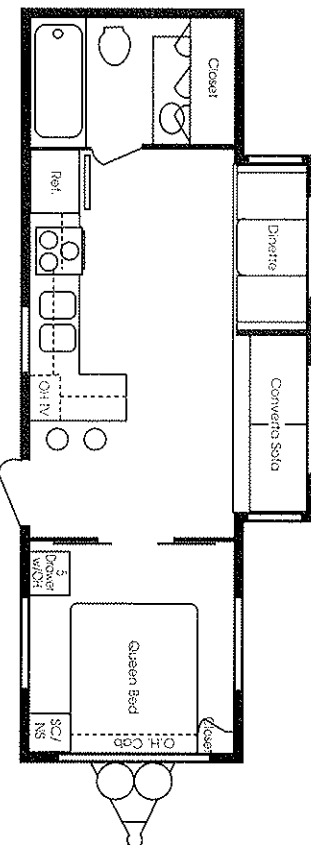
Option C



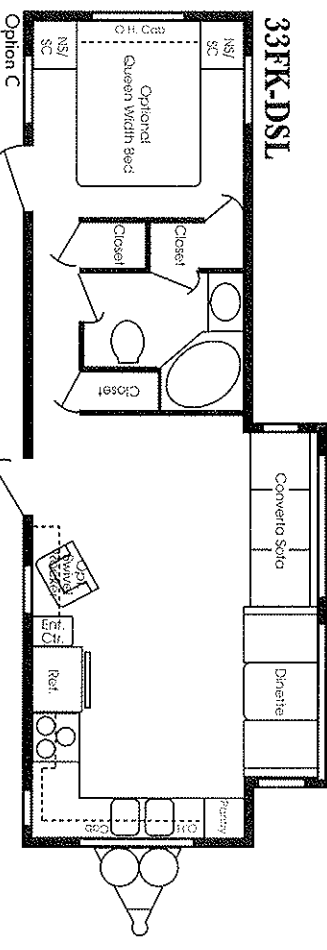
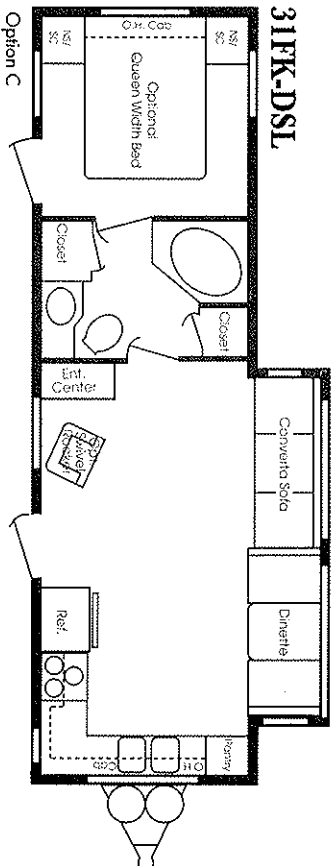
DUTCHMEN CLASSIC TRAVEL TRAILERS WITH SLIDEOUTS



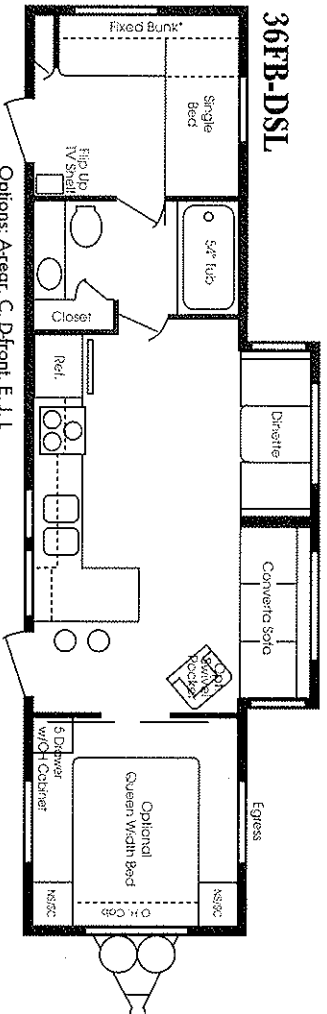
28 FB-DSL



31FK-DSL

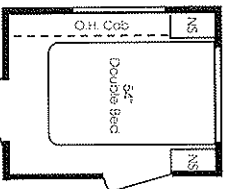


36FB-DSL

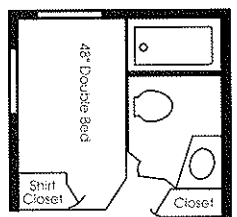


Options: A-rear, C-Dfront, E-J-L

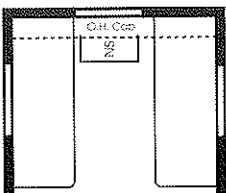
DUTCHMEN CLASSIC TRAILER & 5TH WHEEL FLOORPLAN OPTIONS



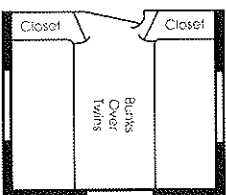
OPTION: A
Rear Double Bed #1



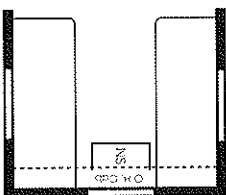
OPTION: B
Rear Double Bed #2



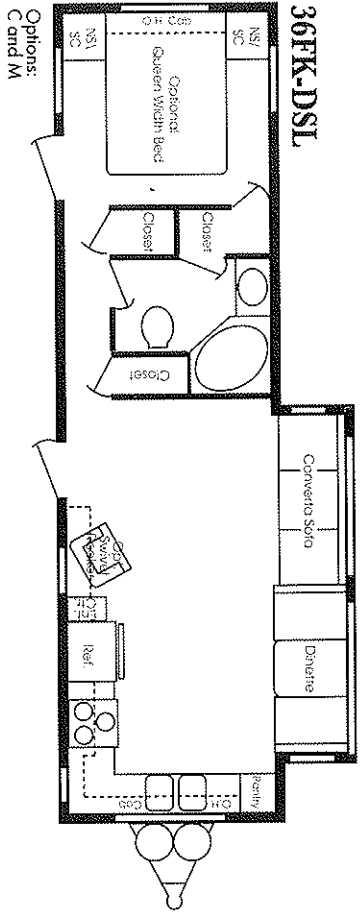
OPTION: C
Twin beds available in
place of standard bed



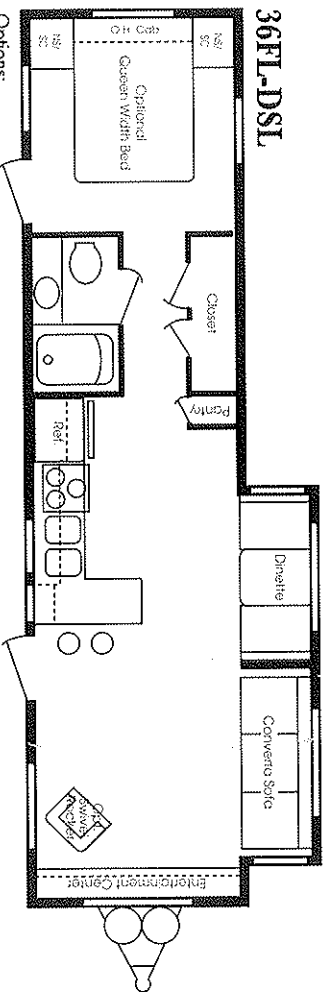
OPTION: D
Bunks over twins



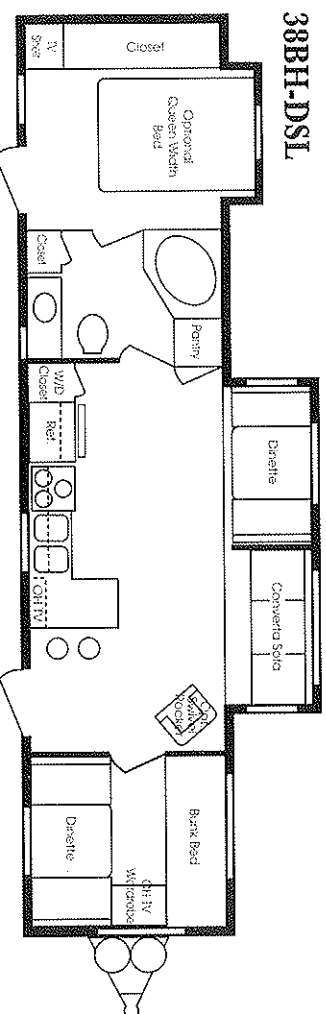
OPTION: E
Twin beds available in
place of standard bed



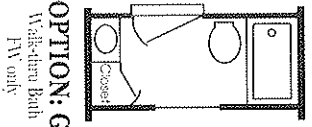
Options:
C and M



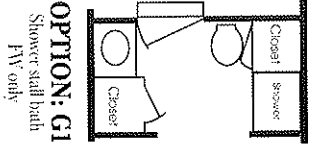
Options:
C, F and M
Note: when ordering opt. F, you automatically get opt. A with a queen bed.



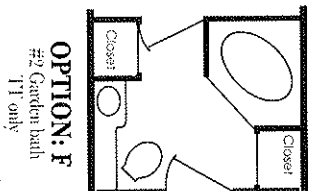
38BH-DSL



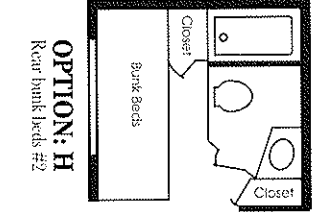
OPTION: G
Walk-thru Bath
FV only



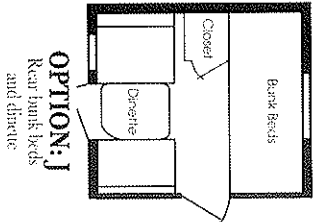
OPTION: GI
Shower stall bath
FV only



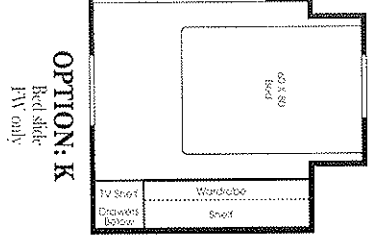
OPTION: F
#2 Garden bath
TT only



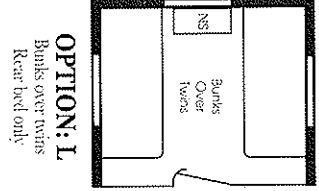
OPTION: H
Rear bunk beds #2



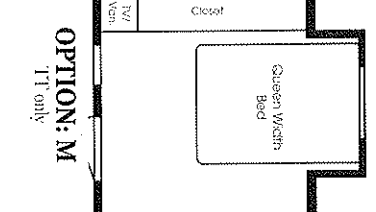
OPTION: J
Rear bunk beds
and dinette



OPTION: K
Bed slide
FV only



OPTION: L
Bunks over twins
Rear bed only



OPTION: M
TT only

TRAVEL TRAILERS

Life

1998 Travel Trailer Models	19FD	22BH	24FK	24QB	26B2	22BH	(FM)
Sleeping Area	3	4	4	4	6	4	
Length	19'4"	23'4"	25'4"	25'4"	27'4"	22'11"	
Width (w/out awning)	96"	96"	96"	96"	96"	96"	
Hitch Dry Weight (approx)	320	400	400	460	520	-	
Axle Dry Weight (approx)	3,020	3,340	3,560	3,590	3,540	-	
GVWR	7,320	7,400	7,480	7,400	7,520	-	
UVW—Unloaded Vehicle Weight (approx)	3,340	3,740	3,840	3,980	4,080	-	
MCC—Net Carrying Capacity	4,020	3,660	3,640	3,420	3,440	-	
Radial	ST205	ST205	ST205	ST205	ST205	ST205	
Tire Size	75R14	75R14	75R14	75R14	75R14	75R14	
Tire Load Range	C	C	C	C	C	C	
Axle Dry Weight Coupler Class Used	4	4	4	4	4	4	
Dual LP Tanks w/Regulator and Changeover (Gals.)	5	5	5	5	5	5	
Dual Waste Water Holding Tanks (Approx. Gals.)	60	60	60	60	60	60	
Demand Water System w/12V Pump (Approx. Gals.)	30	30	30	30	30	30	
Furnace w/12V Fan and Thermostat (BTUS)	20M	20M	20M	25M	25M	25	

Note: Classic weights include air/dwining/microwave and 30-lb bottle.

Classic

19RB	24FL-D	26FK	26FL	26Q	26BH	26FK	30BH-2	30FK
3	4	4	4	4	6	4	6	4
19'4"	25'4"	27'4"	27'4"	27'4"	28'4"	28'4"	31'4"	31'4"
96"	96"	96"	96"	96"	96"	96"	96"	96"
600	880	840	890	910	480	740	560	900
3,380	3,880	4,200	4,220	4,120	4,600	4,660	4,900	4,620
7,600	7,880	7,840	7,860	7,900	7,480	7,840	7,560	7,900
3,980	4,740	5,040	5,080	4,920	5,280	5,440	5,240	5,520
3,620	2,260	2,800	2,780	2,980	2,000	2,340	2,100	2,380
ST205	ST205	ST205	ST205	ST205	ST205	ST205	ST205	ST205
75R15	75R15	75R15	75R15	75R15	5R15	75R15	5R15	75R15
C	C	C	C	C	C	C	C	C
4	4	4	4	4	4	4	4	4
7	7	7	7	7	7	7	7	7
60	60	60	60	60	60	60	60	60
30	30	30	30	30	30	30	30	30
20M	25M	25M	25M	25M	31M	31M	31M	31M

Slide Outs

26FB DSL	26FK DSL	28FB DSL	31BH DSL	31FK DSL	33FK DSL	36FB DSL	36FK DSL	36FL DSL	38BH DSL
4	4	4	6	4	4	8	4	4	8
26'11"	26'11"	28'11"	31'11"	31'11"	33'11"	36'11"	36'11"	36'11"	38'11"
96"	96"	96"	96"	96"	96"	96"	96"	96"	96"
700	1,060	NA	600	1,020	1,180	920	1,060	1,000	NA
5,220	4,940	NA	5,820	5,700	5,920	6,580	6,380	6,260	NA
7,700	8,060	NA	9,400	9,820	9,980	9,720	9,800	9,800	NA
5,920	6,000	NA	6,420	6,720	7,100	7,500	7,440	7,280	NA
1,780	2,060	NA	2,980	3,100	2,880	2,220	2,420	2,540	NA
ST225	ST225	ST225	ST225	ST225	ST225	ST225	ST225	ST225	ST225
75R15	75R15	75R15	75R15	75R15	75R15	75R15	75R15	75R15	75R15
C	C	C	D	D	D	D	D	D	D
NA	4	NA	3	3	4	3	4	4	4
NA	7	NA	7	7	7	7	7	7	7
60	90	60	60	60	90	60	90	60	90
30	30	30	30	30	30	30	30	30	30
31M	31M	31M	31M	31M	35M	35M	35M	35M	35M

FIFTH WHEELS

Classic

1998 FIFTH WHEEL MODELS	24CK	26RK-2
Sleeping Area	4	4
Length	24'11"	26'11"
Width w/o Awning	96"	96"
Hitch Dry Weight (approx)	920	910
Axle Dry Weight (approx)	4,280	4,800
GVWR	7,920	7,900
UVW—Unloaded Vehicle Weight	5,200	5,700
MCC—Net Carrying Capacity	2,720	2,200
Radial	ST205	ST205
Tire Size	75R15	75R15
Tire Load Range	C	C
Dual LP Tanks w/Regulator and Changeover (Gals.)	7	7
Dual Waste Water Holding Tanks (Approx. Gals.)	60	60
Demand Water System w/12V Pump (Approx. Gals.)	30	30
Furnace w/12V Fan/Thermostat (BTUS)	25M	25M

Slide Outs

24RL LSM	26RL SSL-2	27BH LSM	27RK LSM-2	27RK SL	30BH SL	30RK SL	30RL SL	33RK SL-2	35-2B DSL
5	4	5	4	4	6	4	4	4	7
24'11"	26'11"	27'11"	27'11"	27'11"	31'2"	30'11"	31'2"	33'11"	35'11"
96"	96"	96"	96"	96"	96"	96"	96"	96"	96"
740	1,120	1,120	1,100	1,200	NA	1,320	NA	1,360	1,500
5,460	5,420	5,540	5,680	5,780	NA	6,100	NA	6,580	6,420
7,740	8,120	9,920	9,900	10,000	NA	10,120	NA	10,160	10,300
6,200	6,540	6,660	6,780	6,980	NA	7,420	NA	7,940	7,920
1,540	1,580	3,260	3,120	3,020	NA	2,700	NA	2,220	2,380
ST225	ST225	ST225	ST225	ST225	ST225	ST225	ST225	ST225	ST225
75R15	75R15	75R15	75R15	75R15	75R15	75R15	75R15	75R15	75R15
C	C	D	D	D	D	D	D	D	D
7	7	7	7	7	NA	7	NA	7	7
60	60	90	90	90	60	90	60	90	120
30	30	30	30	30	30	30	30	30	30
31M	31M	31M	31M	31M	31M	31M	31M	35M	35M

THOR'S "2+2" WARRANTY

2 year limited structural warranty and 2 years on major components

The best protection in the RV Industry!

See your dealer for all the details.

Vehicle Loading—Every effort has been made to provide the greatest number of options for the recreation vehicle owner. Along with these choices comes the responsibility to manage the loads that are imposed by the choices so that they remain within the manufacturer's specified chassis weight limits. Do not overload the recreation vehicle.

Dry weights based on standard features; optional equipment not included. Net carrying capacity (NCC) determined by subtracting unloaded vehicle weight (UVW) from gross vehicle weight (GVWR) and includes fluids, options and cargo. Liquid capacities and weights are approximations only.

Warning: This information is intended as a guide only. Weights of individual vehicles may vary. Consult your owner's manual for complete loading, weighing and towing instructions.

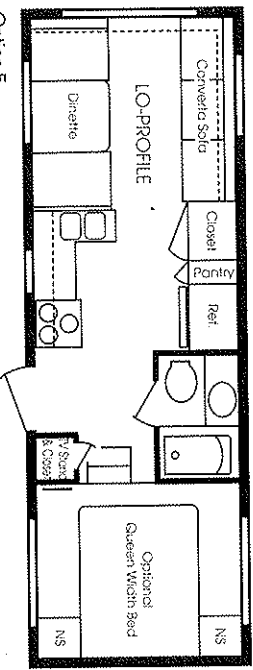
THOR
AMERICA'S BEST RV VALUE



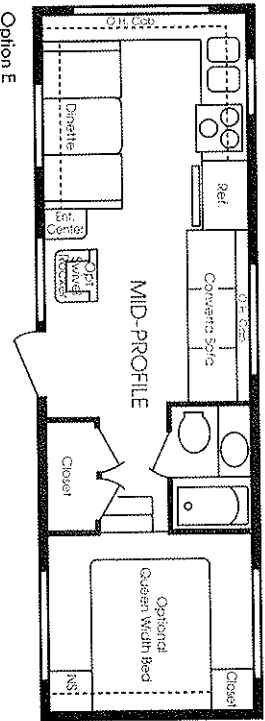
This brochure is printed on recycled paper as part of Thor's corporate effort to minimize waste and conserve our natural resources. We know you will join us in this effort to maintain North America's great outdoors. For who appreciates the natural beauty of our open spaces more than an RV'er?

DUTCHMEN CLASSIC FIFTH WHEELS

24CK

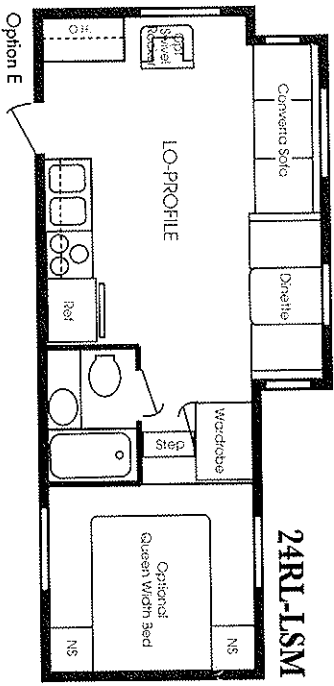


26RK-2

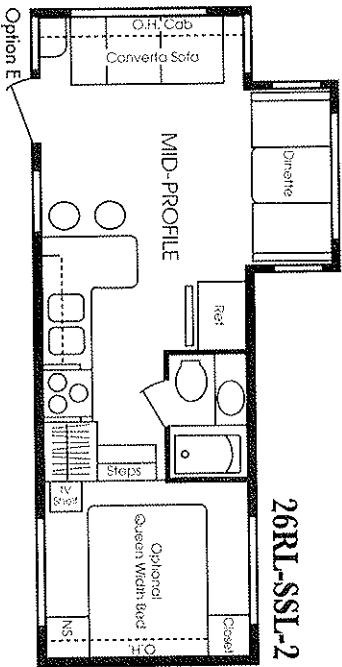


FIFTH WHEELS WITH SLIDEOUTS

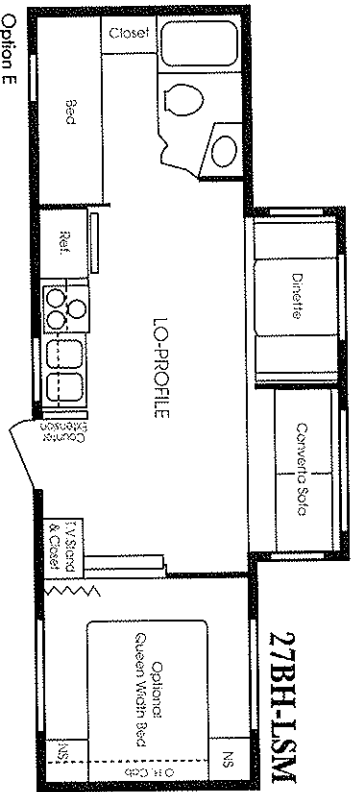
24RL-LSM



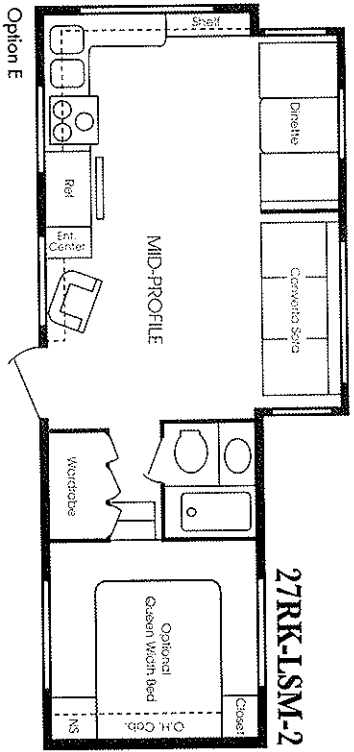
26RL-SSL-2



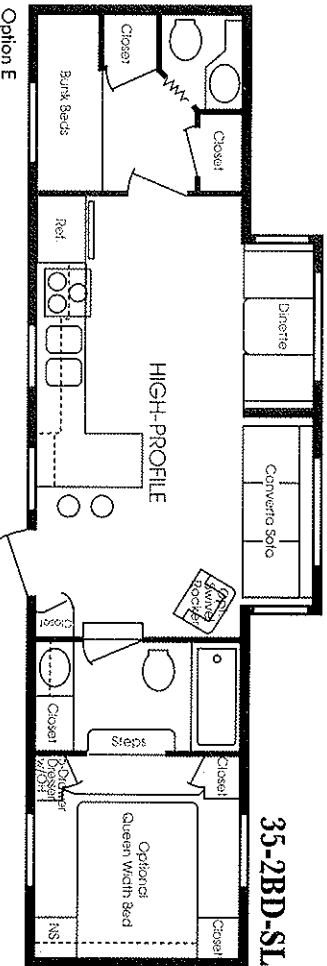
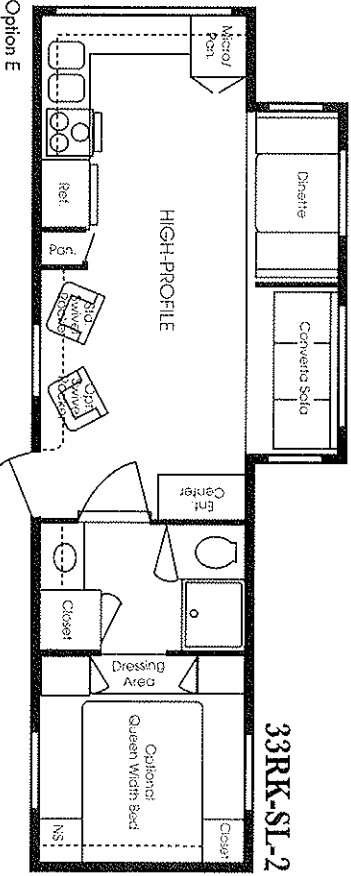
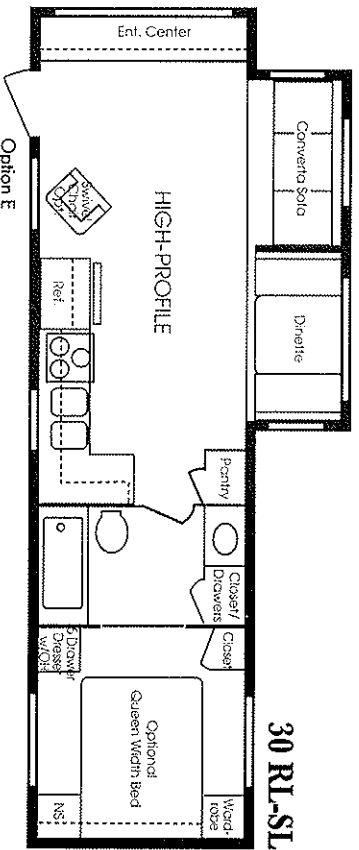
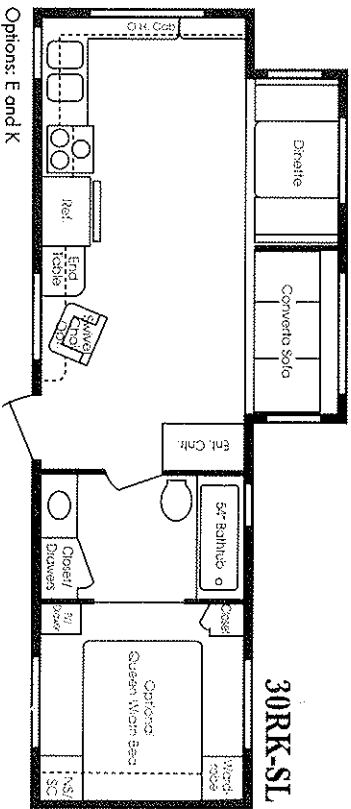
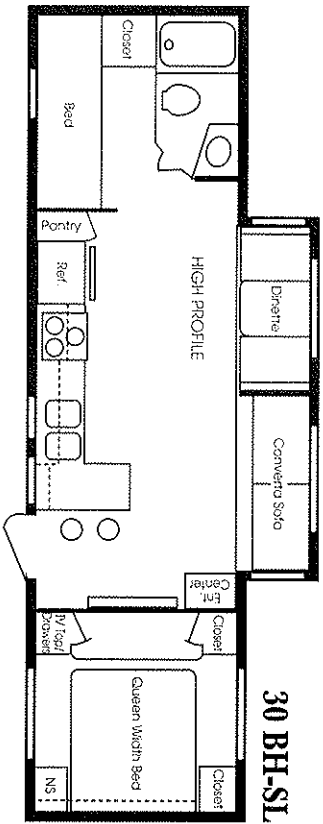
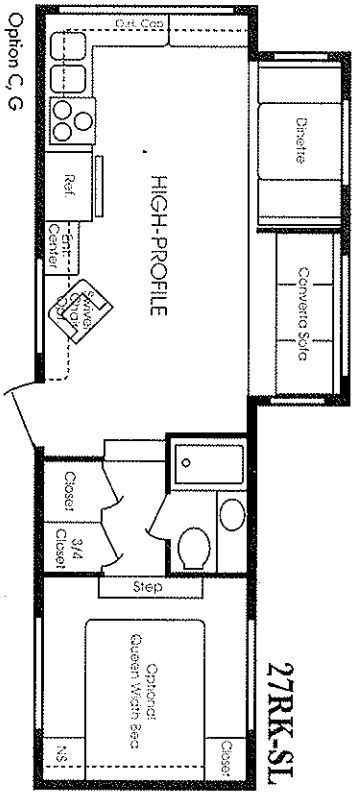
27BH-LSM



27RK-LSM-2



FIFTH WHEELS WITH SLIDEOUTS

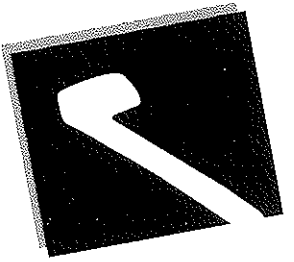


Options: E and K

Option E

Option E

Option E



CHECK IT OUT AND CHECK IT OFF

DUTCHMEN CLASSIC FEATURES

Exterior

- 30" Entry door on most floor plans
- Easy to use double step at main entry door on non-slide trailers
- Easy to use triple step at main entry door on all large slide-out units
- Extra large jalousie clamp ring windows — no screw covers
- Exterior storage wherever possible
- Front radius rock guard awning
- Hitch light *(over handles)*
- Oversized radial tires
- Patio light
- Radius entry doors
- Rear bumper w/hidden sewer hose compartment
- Tandem Axle w/4 wheel electric brakes
- Tinted radius torque windows

Systems

- 20 lb. gas bottles
- 45-amp converter
- 6-gallon gas/electric water heater w/antifreeze and adjustable thermostat
- Ceiling ducted air on units *(26' and above)*
- Ground fault interrupter
- Monitor panel
- Power cord w/hatch
- Power roof vent in bath

Appliances

- 3-burner range w/oversized oven *(12" x 16")*
- Adjustable TV antenna w/booster
- AM/FM cassette stereo system
- LP detector
- New Norcold 8 cu. ft. gas/electric refrigerator w/adjustable thermostat
- Smoke detector

Construction

- 2-year structural and major component warranty
- 2" x 2" walls on 16" centers with 2" bolt rail
- 3/4" Wood roof decking full length of coach
- 5/8" exterior grade-tongue and groove plywood floor
- Adjustable ceiling vents
- All frames are cambered to counteract sagging or drooping
- Bottom exterior metal attached with screws instead of staples
- Buvyl rubber *(no putty tape or foam seal)* around all exterior windows, entry doors, compartment doors, and lights — a proven winner!
- Cabinets flush up against ceiling

Classic Upgrade Features

- Dicor Corp. Brite-ply seamless EPDM roof covering w/life retardant backing and 12-year warranty
- Galvanized steel straps around construction perimeter tying roof to sidewall to floor
- In-floor heat ducting
- Large 5" truss rafters with 3" grade *(26' and up)*
- Large support outriggers with solid continuous weld
- Single piston, track-guided slide mechanism
- Solid oak frame cabinet doors

Classic Upgrade Features

- Create your own unit by adding:**
- 13,500 BTU roof air conditioner
- 15,000 BTU roof air conditioner
- 30 lb. LP gas bottles w/cover
- 6-Gallon gas/electric water heater w/DSI
- 10-Gallon gas/electric water heater w/DSI
- Bar stools
- Bath skylight *(selected models)*
- Bedroom roof vent
- Bedroom slide-out *(selected models)*
- Bedspread
- Bifold shower door
- Carpet in separated bedroom areas
- Chrome bumper
- Color coordinated roll out A & E awning *(center support included on 21' awnings)*
- Decor kits
- (optional plans & decorative accessories)*
- Deluxe scissor-style stabilizer jacks
- Electric jacks *(RV only)*
- Freestanding table w/2 or 4 chairs
- Large microwave oven w/carousel

CLASSIC LIFE FEATURES

- Hide-a-bed sofa *(Slide-out models only)*
- Queen beds *(selected models)*
- Recliner
- Sink cover
- Mini-blinds
- Patio doors *(selected models)*
- Phone jacks
- Power tongue jacks *(TT only)*
- Roof rack & ladder
- Rear stone guard
- Spare tire kit w/carrier & cover — installed
- Solid oak cabinet doors throughout
- Stove cover
- Swivel rocker
- TV shell & outlet in bedroom

Options vary as available at time of printing. Some are essentially free to improve our products, actual products may differ. Prices and specifications are subject to change without notice. All quantities are approximate and dimensions are nominal. Some features or options may be different or unavailable in Canada.

Life Exterior

- Lighter material to be substituted on dinette, bed and cabinet end panels
- New profile
- Dutchmen Classic Life graphic

Life construction

- 4" tubular chassis
- 4" A-frame (tubular)
- 14" tires
- Straight Axles #3500
- 1" x 2" — 3" truss

Appliances

- 5/8" Luanan with one-piece rubber roof
- 5/8" tongue-and-groove plywood floor
- 2 x 2 floor frame running lengthwise
- 16" O.C. sidewalls, 1 1/2"
- 3-burner cooktop
- Durable 20# LP Bottle
- Large single-door refer *(5 cu. ft.)*
- Double-door refer *(option)*
- 3-burner range *(option)*

THOR'S

“2+2” WARRANTY

2 year limited structural warranty and 2 years on major components

The best protection in the RV Industry!

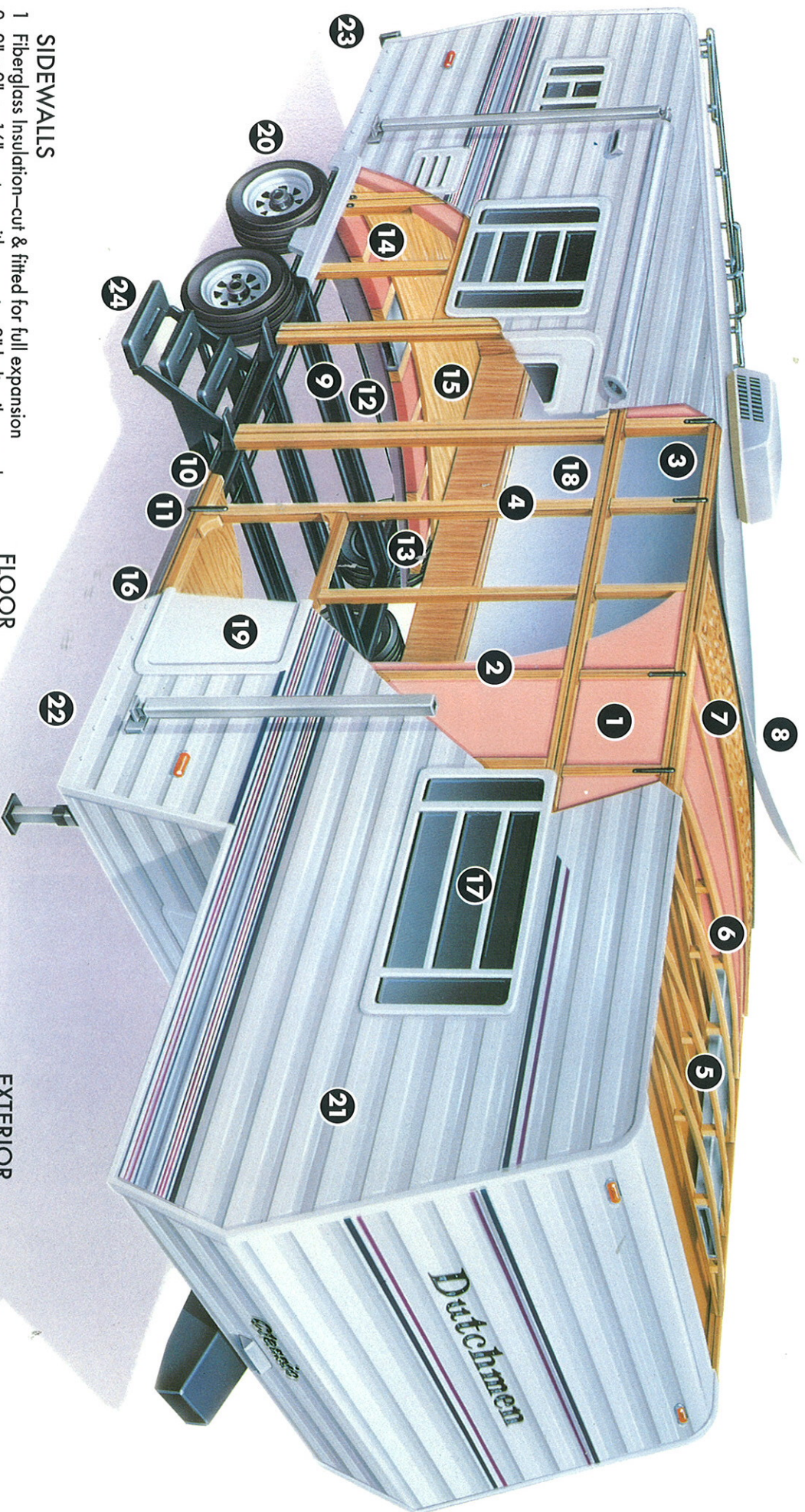
See your dealer for all the details.



Dutchmen
Classic Quality - a Dutch Tradition

Your Assurance of Quality... Craftsmanship... Value

NO MATTER HOW YOU SLICE IT, IT'S PURE VALUE!



SIDEWALLS

- 1 Fiberglass insulation—cut & fitted for full expansion
- 2 2" x 2" on 16" centers with an extra 2" belt rail around the perimeter for extra strength
- 3 Galvanized steel straps around entire construction perimeter—tying roof to sidewall to ceiling
- 4 Double or triple studding around all doors and windows

ROOF

- 5 Large 5" truss roof rafters with 3" grade (26' & up) for better water run off
- 6 Fiberglass insulation—cut and fitted
- 7 3/8" wood roof decking full length of the coach
- 8 Dacor Corp. Brite-ply seamless EPDM roof covering w/fire retardant backing and 12-year warranty

FLOOR

- 9 Box tube frame on all non-slides, I-beam frame on all slide-outs—cambered to prevent drooping
- 10 Large support outriggers w/solid continuous weld
- 11 Darco underbelly wrapped around the floor for extra water protection
- 12 2" x 3" studs running lengthwise to allow for heat duct installation
- 13 Fiberglass insulation—cut & fitted
- 14 5/8" exterior grade tongue-&-groove plywood floor
- 15 Either high grade vinyl flooring or 30oz. stain-resistant polypropylene carpet
- 16 Notice that the sidewall is placed on top of the floor

EXTERIOR

- 17 Extra large tinted, radius, jalousie clamp ring windows that are sealed with butyl rubber for one of the best watertight seals in the industry
- 18 30" radius entry door on most floorplans
- 19 Exterior storage wherever possible
- 20 Oversized radial tires
- 21 S-lock Mesa aluminum—024
- 22 Bottom exterior aluminum attached with screws thru the side—water cannot be trapped, no staples to penetrate wood, or rust and fall out
- 23 Rear bumper w/hidden sewer hose compartment
- 24 Top quality—easy to use double or triple steps—Try them!



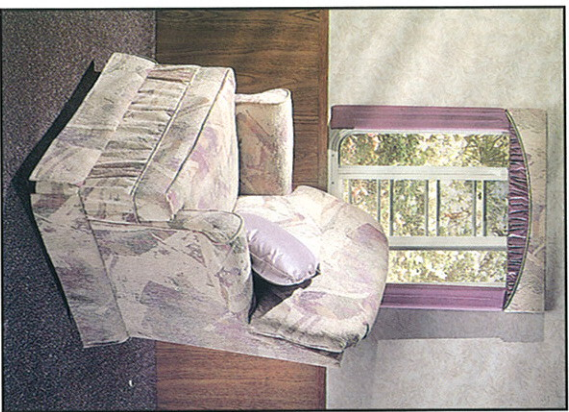
Mystery Erru/Mauve Carpet



Mystery Erru/Green Carpet



Mystery Erru/Blue Carpet



Alysia Amethyst



Meadow Palmetto



Chicago Nile



A roof rack and ladder will complete the look of your Dutchmen and make roof cleaning and maintenance easier and safer. Deluxe scissor jacks make levelling your trailer quick and easy.

THOR'S "2+2" WARRANTY

2 year limited structural warranty
and 2 years on major components

The best protection in the RV Industry!

See your dealer for all the details.

Your Local Dealer



This brochure is printed on recycled paper as part of Thor's corporate effort to minimize waste and conserve our natural resources. We know you will join us in this effort to maintain North America's great outdoors. For who appreciates the natural beauty of our open spaces more than an RV'er?



THOR
AMERICA'S BEST RV VALUE



Dutchmen

DUTCHMEN MANUFACTURING
305 Steury Ave • Goshen, IN 46526

219-534-1224