



81434

Eagle



Serial #: 1UJCA0BV8R1WA0268
Model: 355MBQS EAGLE FW

Model Year: 2024 Dealer Name: BISH'S RV OF LONGVIEW
5009 JUDSON RD
LONGVIEW, TX 75605
USA

Manufacturer's Suggested Retail Price \$113,381.00

TOTAL AMOUNT DOES NOT INCLUDE STATE AND LOCAL TAXES OR LICENSE FEES. THE PRICE SHOWN ABOVE MAY OR MAY NOT BE REPRESENTATIVE OF THE ACTUAL SELLING PRICE OF SIMILAR RECREATIONAL VEHICLES IN YOUR AREA.

Standard Equipment

THE FOLLOWING ITEMS ARE STANDARD ON THIS MODEL AT NO EXTRA CHARGE

- EXTERIOR**
- Stronghold VBL™ walls (laminated sidewalls, rear walls and slide out wells)
 - 5 in. Magnum Truss™ Roof System with Alpha roof membrane system with limited lifetime warranty
 - Climate Shield™ zero-degree tested weather protection
 - Fully enclosed and heated underbelly (ducted)
 - 35,000 BTU output furnace
 - Double layer fiberglass batt insulation in ceiling and floor
 - Double sided radiant barrier insulation (roof, floor, and behind cap)
 - PEX plumbing
 - HELIX Cooling System™ (industry exclusive)
 - Jayco exclusive insulated dual duct design
 - Directional and closeable A/C vents
 - Larger return air vents with user accessible filters
 - JaySMART™ (Safety Markers And Reverse Travel) LED lighting (patented)
 - Automotive style front cap with max turn radius (painted on select models)
 - Auto-grade vinyl graphics
 - LED exterior lighting package
 - 50-amp detachable power cord
 - Dual 30 lb. LP bottles
 - Metal slam latch baggage doors
 - Digital TV antenna with Wi-Fi prep
 - Dual channel exterior speaker
 - Nautilus 2.5 water connections
 - Black tank flush
 - Independent satellite and whole coach cable hookups
 - Battery disconnect in pass through area
 - Nitrogen filled undermount spare tire (16 in.)
 - LP quick connect for gas grille (next to JayPort)
 - Slide topper/awning prep
 - 1.5 in. fresh water drain valve
 - 96 in. LED lighting in pass through area with 3-way switches
 - Commercial grade rubber flooring in pass through area
 - Factory installed roof ladder
 - Galvalume® Steel coated outside kitchens
 - Overlander 1 Solar Package (1) 200W panels, MPPT 30-amp solar controller
 - Quick connect water connections (door side hot/cold and off door side cold only)
- COMFORT PLUS PACKAGE (Mandatory) (W-models only)**
- Second power awning with dimmable LED lights
 - 2nd 15,000 BTU "Whisper Quiet" A/C
 - Drinking Water System (patented)
 - Upsized 16 cu. ft. 12V refrigerator
 - Solid surface kitchen countertop with bamboo sink covers and strainer
 - BAMPRO Bluetooth® light switches throughout
 - King bed (72 in. x 80 in.) mattress with under-bed storage
 - 16 in. Endurance® Goodyear® wheels/tires
 - Larger exterior baggage door sizes
 - Upsized 50 in. 4K SMART LED TV in living room
 - Upsized 34 in. LED fireplace with 5,000 BTU electric space heater
 - Upsized GE 24 in. residential stove with 4-burner cooktop

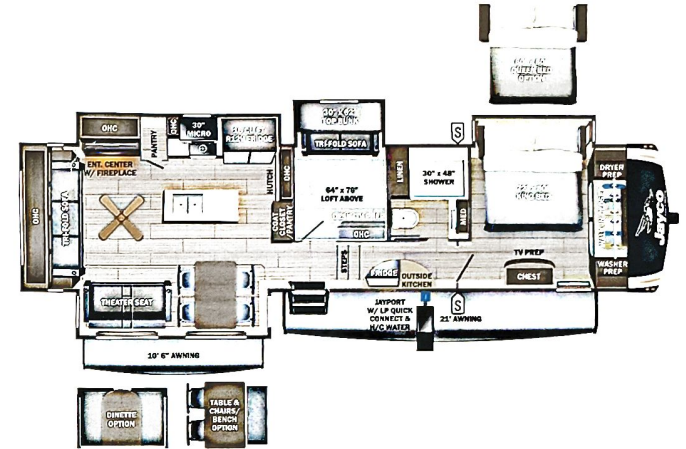
- INTERIOR**
- Solid hardwood slide fascia
 - Handcrafted and glazed door/drawer fronts (new sizes)
 - 75 lb. full extension drawer guides
 - 5/8 in. tongue-and-groove plywood flooring
 - Residential vinyl flooring throughout
 - LED lights with dimmer switches and motion activated (throughout interior)
 - Tri-fold hide-a-bed sofa with residential memory foam sleep surface (select models)
 - Theater seating (select models)
 - Stainless steel kitchen sink
 - Matte black kitchen faucet with pull-out sprayer
 - USB charging ports (multiple locations throughout)
 - Extra 120V power outlets in kitchen and slide rooms (where applicable)
 - 50 in. x 92 in. residential quilted bedspread (both queen and king mattresses)
 - Gas-strutted under-bed storage
 - Inverter pre-wire (multiple locations)
 - C.P.A.P. prepped bedroom
 - Bathroom skylight
 - LED backlit medicine cabinet with custom framed mirror
 - Porcelain foot flush toilet
 - 2-piece high gloss bathroom surround
 - Bedroom TV prep
 - Furniture cup holder tables (1 pair)
- CUSTOMER VALUE PACKAGE (Mandatory)**
- MORryde® StepAbove™ entrance steps (main entrance) with blue LED light
 - 15K BTU "Whisper Quiet" A/C and bedroom A/C prep
 - 50-amp service with dual A/C ducts
 - Electric patio awning with integrated dimmable LED lights
 - 60K on-demand water heater with mixing tank
 - Custom machined aluminum rms
 - Rear 2 in. towing receiver with 4 pin connector
 - Keyed-Alike™ lock system (single key for all doors/locks)
 - Security monitor prep (rear, sides and entrance door)
 - Hidden hinges on cabinet doors
 - Upgraded friction hinge entrance door
 - 4K 50 in. ultra LED HD Smart TV in living room
 - JBL Aura Bar 12V with Bluetooth® and dual HDMI (dual zone)
 - GE black and stainless 24 in. range with edge to edge grates
 - GE 30 in. over-the-range black and stainless microwave with exhaust fan
 - Rain-proof bathroom power vent
- LUXURY PACKAGE (Mandatory)**
- JAYCOMMAND® "Smart RV" system (Pro tablet)
 - LED fireplace with 5,000 BTU electric space heater (select models)
 - GE 16 cu. ft. 12V refrigerator
 - Blackout roller shades with reflective side throughout
 - Washer/dryer prep (select models)
 - TPMS (Tire Pressure Monitoring System) in-stem monitoring
 - Electric auto-leveling
 - JayPort 2 in. mount (for outside accessories)
 - MORryde Safe-T-Rail grab handle
 - Overlander 1 Solar Package (200W panel and 30-amp solar controller)
 - Residential style glass shower door
- FIVE STAR HANDLING PACKAGE (Mandatory)**
- Goodyear® Endurance® tires (load range E)
 - Dexter® Axles with Nev-R-Adjust® brakes and E-Z Lube® hubs
 - MORryde® CRE-3000™ rubberized suspension
 - Wet bolt fasteners, bronze bushings
 - Dexter® ABS brake system with anti-sway

Optional Equipment

OPTIONAL EQUIPMENT INSTALLED ON THIS VEHICLE BY MANUFACTURER

Base price	86,882.00
USA STANDARDS	n/c
CUSTOMER VALUE PACKAGE	6,263.00
LUXURY PACKAGE	7,493.00
FIVE STAR HANDLING PACKAGE	5,993.00
COMFORT PLUS PACKAGE	6,750.00
OVERLANDER I SOLAR PACKAGE	n/c
STANDARD CAMPING PACKAGE	n/c
OBSERVATION SYSTEM PREP	n/c
TINTED SAFETY GLASS WINDOWS	n/c
FREE STANDING TABLE & CHAIRS	n/c
KING BED	n/c

UNIT TOTAL 113,381.00
DEALER INSTALLED OPTIONS



UVW
13020 lbs



Sleeps



Length
42' 3.5"

DIMENSIONS

Exterior height:	159.75"
Exterior width:	97.00"
WEIGHTS	
GVWR:	15200
GAWR (front):	6600
GAWR (rear):	6600
Approx. Gross Cargo Carrying Capacity (GCCC):	2180

CAPACITIES

Fresh water tank (gals.):	81.00
Gray water tank (gals.):	87.00
Black water/toilet tank (gals.):	50.00
Propane (lbs.):	60
Propane (gals.):	14
Water heater (gals.):	0.19

SEATING & SLEEPING

TIRES

Tire size (front):	ST235/85R16E
Tire size (mid):	ST235/85R16E
Tire size (rear):	ST235/85R16E
Tire size (spare):	ST235/85R16E

Some dimensions may be rounded and may vary from the actual dimensions
Weights may be estimated calculations and may vary from the actual weight - refer to the vehicle weight labels for actual weights
Floorplans, features and specifications are subject to change without notice.

