



77704

Jay Flight



Serial #: 1UJBC0BR8R17S0276
 Model: 284BHS JAY FLIGHT TT

Model Year: 2024 Dealer Name: BISH'S RV OF LONGVIEW
 5009 JUDSON RD
 LONGVIEW, TX 75605
 USA

Standard Equipment

THE FOLLOWING ITEMS ARE STANDARD ON THIS MODEL
 AT NO EXTRA CHARGE

- EXTERIOR**
- 20 lb. LP bottles with cover (2)
 - Enclosed and heated underbelly
 - Axles with electric, self-adjusting brakes and easy-lube hubs
 - I-Class™ cambered structural steel I-beams
 - 5/8 in. tongue-and-groove plywood floor decking
 - Magnum Truss™ Roof system with plywood decking
 - Seamless one piece roof material
 - Large exterior downspouts
 - Galvanized steel, impact-resistant wheel wells
 - 30-amp service
 - Front diamond plate
 - Exterior TV mount and bracket
 - LP quick connect (outside gas grill prep)

- INTERIOR**
- 8' in. ceiling height
 - 6 cu. ft. 12V refrigerator
 - Shower/tub surround
 - Solid hardwood cabinet doors
 - J-Steel™ jackknife sofa with armrest & cup holders (most models)
 - Vinyl flooring throughout (including slide floors)
 - Window shades
 - Residential-style kitchen countertops
 - Heavy-duty, 75 lb., full-extension, steel ball-bearing drawer guides
 - USB charging station
 - Queen mattress
 - Plywood bed platforms
 - Main bed struts
 - 300 lb. rated bunk beds (select models)
 - 600 lb. rated bunk beds (double bunks)
 - Privacy curtains in bunk areas (select models)
 - Vented bunk windows (select models)
 - 4 in. thick bunk mats (select models)
 - Wooden bedroom doors (select models)
 - Shower curtain with curved shower track (select models)

- CUSTOMER VALUE PACKAGE (Mandatory)**
- Black tank flush
 - Overlander 1 Solar Package: (1) 200W solar panel and 30-amp digital controller
 - Large main entry door grab handle
 - Solid Step® entry steps (N/A 380DOS)
 - On-demand tankless water heater
 - Goodyear® Endurance® tires (made in the USA)
 - Outside shower
 - Power tongue jack
 - Spare tire with cover
 - Power awning with LED lights
 - Marine grade exterior speakers
 - Keyed-Alike™ entry and baggage doors
 - Bathroom power vent
 - Bathroom skylight
 - 13.5K BTU A/C
 - AM/FM/Bluetooth® stereo
 - Backup and side view camera prep
 - Bathroom medicine cabinet
 - Detachable power cord
 - Fitted bed sheet
 - Friction hinge entry door with window and shade prep
 - G20 dark tinted privacy windows
 - Inverter pre-wire
 - LED exterior and interior lights
 - Marine grade exterior speakers
 - Microwave oven
 - One-piece front fiberglass exterior wall
 - Over with 3-burner recessed cooktop with glass cover
 - Flange hood
 - Rock-Solid Stabilizer System
 - Seamless countertops
 - Sink cover

Optional Equipment

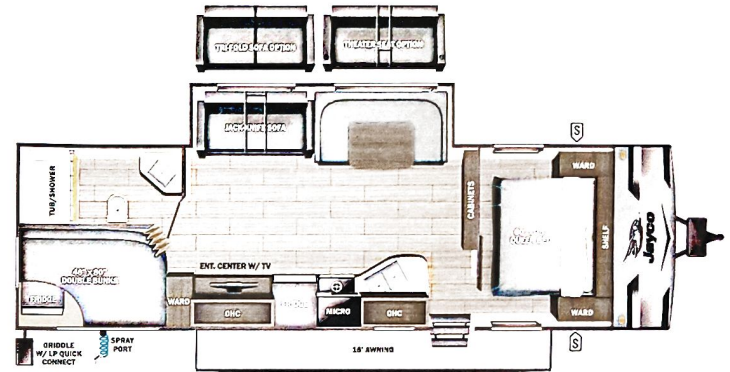
OPTIONAL EQUIPMENT INSTALLED ON THIS VEHICLE
 BY MANUFACTURER

Base price	39,804.00
USA STANDARDS	n/c
CUSTOMER VALUE PACKAGE	5,250.00
15,000 BTU AC	300.00
2ND AC	893.00
50 AMP SERVICE	443.00
METAL SIDEWALL	n/c
BLACK SPOKE RIMS	n/c
20# LP GAS BOTTLES	n/c
ROOF LADDER	188.00
THEATER SEATING SOFA	1,043.00

UNIT TOTAL **47,921.00**
 DEALER INSTALLED OPTIONS

Manufacturer's Suggested Retail Price \$47,921.00

TOTAL AMOUNT DOES NOT INCLUDE STATE AND LOCAL TAXES OR LICENSE FEES. THE PRICE SHOWN ABOVE MAY OR MAY NOT BE REPRESENTATIVE OF THE ACTUAL SELLING PRICE OF SIMILAR RECREATIONAL VEHICLES IN YOUR AREA.



UVW
 6705 lbs

Sleeps
 4

Length
 33' 6.75"

DIMENSIONS

Exterior height:	133.25"
Exterior width:	96.00"
WEIGHTS	
GVWR:	7950
GAWR (front):	3500
GAWR (rear):	3500
Approx. Gross Cargo Carrying Capacity (GCCC):	1245

CAPACITIES

Fresh water tank (gals.):	52.00
Gray water tank (gals.):	39.00
Black water/toilet tank (gals.):	39.00
Propane (lbs.):	40
Propane (gals.):	9
Water heater (gals.):	0.00

SEATING & SLEEPING

TIRES

Tire size (front):	ST205/75R14D
Tire size (mid):	
Tire size (rear):	ST205/75R14D
Tire size (spare):	ST205/75R14D

Some dimensions may be rounded and may vary from the actual dimensions
 Weights may be estimated calculations and may vary from the actual weight - refer to the vehicle weight labels for actual weights
 Floorplans, features and specifications are subject to change without notice.

