

866 50

Jay Flight SLX



Serial #: 1UJBC0BP1R1YY0207
 Model: 262RLS JAY FLIGHT SLX TT

Model Year: 2024 Dealer Name: BISH'S RV OF LONGVIEW
 5009 JUDSON RD
 LONGVIEW, TX 75605
 USA

Manufacturer's Suggested Retail Price \$41,880.00

TOTAL AMOUNT DOES NOT INCLUDE STATE AND LOCAL TAXES OR LICENSE FEES. THE PRICE SHOWN ABOVE MAY OR MAY NOT BE REPRESENTATIVE OF THE ACTUAL SELLING PRICE OF SIMILAR RECREATIONAL VEHICLES IN YOUR AREA.

Standard Equipment

Optional Equipment

THE FOLLOWING ITEMS ARE STANDARD ON THIS MODEL AT NO EXTRA CHARGE

OPTIONAL EQUIPMENT INSTALLED ON THIS VEHICLE BY MANUFACTURER

- EXTERIOR**
- Axles with electric, self-adjusting brakes and easy-lube hubs
 - Fully-integrated A-frame
 - Galvanized-steel, impact resistant wheel wells
 - Magnum Truss™ Roof System
 - PVC roofing membrane (limited lifetime warranty)
 - Large exterior downspouts
 - 30-amp service
 - Exterior cable TV hookup
 - LP Quick connect (outside grill prep)
 - 5,000 BTU wall mount A/C (single axle models)
 - Nitrogen filled radial tires

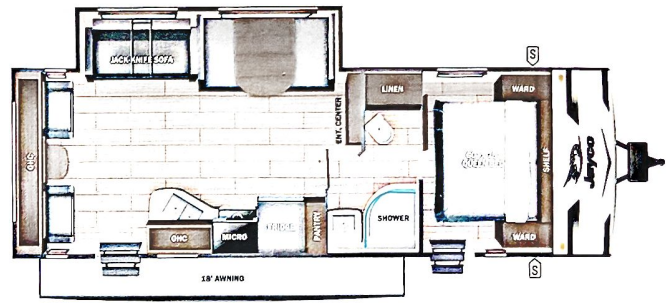
- INTERIOR**
- Solid hardwood cabinet doors with screwed stile construction and hidden hinges
 - Vinyl flooring throughout
 - Digital TV antenna
 - Residential-style kitchen countertops
 - High rise kitchen faucet
 - Heavy-duty, 75 lb., full-extension, steel ball-bearing drawer guides
 - Plywood bed platforms
 - Queen mattress (select models)
 - 300 lb. rated single bunk beds
 - 600 lb. rated double bunk beds
 - Marine-grade toilet with foot flush
 - Shower curtain with curved shower track (select models)
 - Wood-trimmed mirror in bathroom

- CUSTOMER VALUE PACKAGE (Mandatory)**
- Solid Step® entry steps
 - On-demand tankless water heater
 - Power awning with LED lights
 - Marine grade exterior stereo speakers
 - Stabilizer jacks
 - Spare tire with cover
 - Keyed-Alike™ entry and baggage doors
 - Large folding entry door grab handle
 - Window shades
 - Range hood
 - 8 cu. ft. 12V refrigerator
 - Microwave oven
 - Fitted bed sheet (N/A 154BH)
 - Bathroom skylight
 - Tub/shower surround
 - Backup camera prep
 - Detachable power cord
 - G20 dark tinted privacy windows
 - Bathroom vent
 - LED interior and exterior lights
 - Entry door with window and shade prep
 - AM/FM/Bluetooth® stereo

Base price	33,906.00
USA STANDARDS	n/c
CUSTOMER VALUE PACKAGE	5,250.00
OVERLANDER SOLAR PACKAGE	593.00
15,000 BTU ROOF MOUNTED AC	893.00
FIBERGLASS SIDEWALL	1,050.00
ENCLOSED UNDERBELLY	188.00
STANDARD RADIAL TIRES	n/c

UNIT TOTAL **41,880.00**

DEALER INSTALLED OPTIONS



UVW 6353 lbs **Sleeps** **Length** 30' 3.63"

DIMENSIONS

Exterior height:	132.75"
Exterior width:	96.00"
WEIGHTS	
GVWR:	7000
GAWR (front):	3500
GAWR (rear):	3500
Approx. Gross Cargo Carrying Capacity (GCCC):	647

CAPACITIES

Fresh water tank (gals.):	52.00
Gray water tank (gals.):	39.00
Black water/toilet tank (gals.):	39.00
Propane (lbs.):	40
Propane (gals.):	9
Water heater (gals.):	0.25

TIRES

Tire size (front):	ST205/75R14D
Tire size (mid):	
Tire size (rear):	ST205/75R14D
Tire size (spare):	ST205/75R14D

SEATING & SLEEPING

Some dimensions may be rounded and may vary from the actual dimensions
 Weights may be estimated calculations and may vary from the actual weight - refer to the vehicle weight labels for actual weights
 Floorplans, features and specifications are subject to change without notice.

