



77761

## Jay Flight



Serial #: 1UJBC0BP6R1740105  
Model: 263RBS JAY FLIGHT TT

Model Year: 2024 Dealer Name: BISH'S RV OF LONGVIEW  
5009 JUDSON RD  
LONGVIEW, TX 75605  
USA

### Standard Equipment

THE FOLLOWING ITEMS ARE STANDARD ON THIS MODEL  
AT NO EXTRA CHARGE

- EXTERIOR**
- 20 lb. LP bottles with cover (2)
  - Enclosure and heated underbelly
  - Axles with electric, self-adjusting brakes and easy-lube hubs
  - 1-Class™ cambered structural steel I-beams
  - 5/8 in. tongue-and-groove plywood floor decking
  - Magnum Truss™ Roof system with plywood decking
  - Seamless one-piece roof material
  - Large exterior downspout
  - Galvanized steel, impact-resistant wheel wells
  - 30-amp service
  - Front diamond plate
  - Exterior TV mount and bracket
  - LP quick connect (outside gas grill prep)

- INTERIOR**
- 81 in. ceiling height
  - 2 cu. ft. 12V refrigerator
  - Showers with surround
  - Softwood cabinet doors
  - J-Steel™ jacksnife sofa with armrest & cup holders (most models)
  - Vinyl flooring throughout (including slide floors)
  - Window shades
  - Residential-style kitchen countertop
  - Heavy-duty 75 lb. full-extension, steel ball-bearing drawer guides
  - USB charging station
  - Queen mattress
  - Plywood bed platforms
  - Main bed strut
  - 800 lb. rated bunk beds (select models)
  - 600 lb. rated bunk beds (double bunks)
  - Privacy curtains in bunk areas (select models)
  - Vented bunk windows (select models)
  - 4 in. thick bunk mats (select models)
  - Wooden bedroom doors (select models)
  - Shower curtain with curved shower track (select models)

- CUSTOMER VALUE PACKAGE (Mandatory)**
- Black tank flush
  - Overlander™ Solar Package (1) 200W solar panel and Solarm digital controller
  - Large main entry door grab handle
  - Soft Step® entry step (N/A 380DQ5)
  - On-demand tankless water heater
  - Goodyear® 140urance® tires (made in the USA)
  - Outside shower
  - Power tongue jack
  - Spare tire w/ cover
  - Power awning with LED lights
  - Marine grade exterior speakers
  - Keyed-Alike™ entry and baggage doors
  - Bathroom power vent
  - Bathroom skylight
  - 12.5L BTL KIC
  - AM/FM/Bluetooth® stereo
  - Backup and side view camera prep
  - Bathroom medicine cabinet
  - Detachable power cord
  - Fitted bed sheet
  - Friction hinge entry door with window and shade prep
  - G20 dark tinted privacy windows
  - Inverter pre-wire
  - LED exterior and interior lights
  - Marine grade exterior speakers
  - Microwave over
  - One-piece front fiberglass exterior wall
  - Queen w/ 2 burner recessed cooktop with glass cover
  - Range hood
  - Rock Solid Stabilizer System
  - Seamless countertop
  - Sink cover

### Optional Equipment

OPTIONAL EQUIPMENT INSTALLED ON THIS VEHICLE  
BY MANUFACTURER

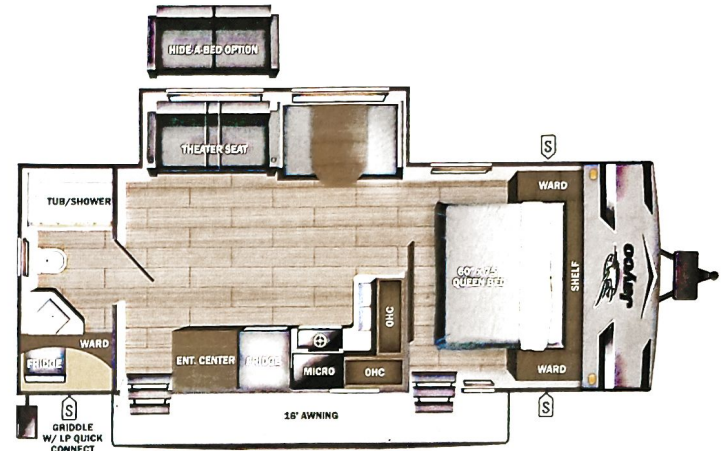
Base price	41,085.00
USA STANDARDS	n/c
CUSTOMER VALUE PACKAGE	5,250.00
15,000 BTU AC	300.00
NO 2ND AC	n/c
50 AMP SERVICE	443.00
METAL SIDEWALL	n/c
BLACK SPOKE RIMS	n/c
20# LP GAS BOTTLES	n/c
ROOF LADDER	188.00
THEATER SEATING SOFA	n/c

UNIT TOTAL 47,266.00

DEALER INSTALLED OPTIONS

## Manufacturer's Suggested Retail Price \$47,266.00

TOTAL AMOUNT DOES NOT INCLUDE STATE AND LOCAL TAXES OR LICENSE FEES. THE PRICE SHOWN ABOVE MAY OR MAY NOT BE REPRESENTATIVE OF THE ACTUAL SELLING PRICE OF SIMILAR RECREATIONAL VEHICLES IN YOUR AREA.



**UVW**  
6203 lbs



**Sleeps**



**Length**  
30' 0.75"

#### DIMENSIONS

Exterior height:	134.75"
Exterior width:	96.00"
GVWR:	7500
GAWR (front):	3500
GAWR (rear):	3500
Approx. Gross Cargo Carrying Capacity (GCCC):	1297

#### TIRES

Tire size (front):	ST205/75R14D
Tire size (mid):	
Tire size (rear):	ST205/75R14D
Tire size (spare):	ST205/75R14D

#### CAPACITIES

Fresh water tank (gals.):	52.00
Gray water tank (gals.):	78.00
Black water/toilet tank (gals.):	39.00
Propane (lbs.):	40
Propane (gals.):	9
Water heater (gals.):	0.00

#### SEATING & SLEEPING

\*\*\*Some dimensions may be rounded and may vary from the actual dimensions\*\*\*  
\*\*\*Weights may be estimated calculations and may vary from the actual weight\*\*\*  
- refer to the vehicle weight labels for actual weights\*\*\*  
Floorplans, features and specifications are subject to change without notice.

**2+3**  
YEAR | YEAR  
LIMITED STRUCTURAL  
WARRANTY