

78680

Pinnacle



Serial #: 1UJCF0BT8R1RV0116
Model: 32RLTS PINNACLE FW

Model Year: 2024 Dealer Name: BISH'S RV OF LONGVIEW
5009 JUDSON RD
LONGVIEW, TX 75605
USA

Standard Equipment

THE FOLLOWING ITEMS ARE STANDARD ON THIS MODEL AT NO EXTRA CHARGE

- EXTERIOR**
- Stronghold VBL™ aluminum framed and vacuum bond laminated gelcoated fiberglass exterior walls (including slide room end walls)
 - 12" structural steel I-beam with 10" steel drop frame
 - Magnum Truss™ XL6™ Roof System (strongest tested roof in the industry) with Alpha roof membrane system with a limited lifetime warranty
 - Climate Shield™ 01 tested weather protection
 - Fully enclosed and heated underbelly (ducted)
 - 40,000 BTU output furnace
 - Double layer fiberglass batt insulation (roof & floor)
 - PEX plumbing, 2" block foam & reflective foil
 - JaySMART™ (Safety Markers And Reverse Travel) LED lighting (patented)
 - Painted fiberglass front and rear cap with clear coat and built-in specialty LED lighting
 - Frameless dark tinted safety-glass windows
 - Custom automotive-grade vinyl exterior graphics
 - 102" widebody construction
 - Skirt metal enclosed drop frame
 - LED exterior lighting package
 - (3) 40 lb. LP propane bottles with auto regulator (120 lb. max LP system)
 - Pass-through storage with Slam-latch™ doors
 - Digital TV antenna with Wi-Fi extender
 - Exterior marine-grade speakers with Bluetooth® controller
 - Fully enclosed, universal docking center.
 - Quick-connect outside shower
 - Black tank flush
 - Ventilation and sanitation
 - Independent satellite wiring
 - Whole coach cable hookups
 - Water heater bypass
 - Battery disconnect
 - Under-mounted spare tire
 - JayPort outside grille prep (standard on all floorplans without a standard outside kitchen)
 - Built in sewer hose carrier
 - 3,000 lb. tow hitch with 4-way pin
 - Inverter pre-wire to select outlets
 - 120V heat blankets on all tanks plus 12V heat tape on fresh water line
- CUSTOMER VALUE PACKAGE (Mandatory)**
- 15K BTU "Whisper Quiet" A/C with heat pump
 - 15K BTU "Whisper Quiet" A/C (bedroom)
 - Electric patio awning with integrated LED lights
 - 16 gal. gas/electric DSI water heater
 - Custom machined aluminum rims
 - Keyed "Alike"™ lock system
 - Rooftop and ground solar prep
 - Backup, main entrance door and side observation security camera prep (includes a power switch in the bedroom to use the optional 7 in. monitor for security)
 - Hidden hinges on cabinet doors
 - JBL® home entertainment system with sound bar and subwoofer
 - 50 in. 4K SMART LED HDTV with fully digital HDMI® output and two additional HDMI® cables
 - Wireless remote control system (includes Bluetooth® wireless interior controls)
 - Residential king (72 in. x 80 in.) mattress with under-bed storage
 - MORyde Safe™-Rail grab handle
- 5 STAR HANDLING PACKAGE (MANDATORY)**
- 17.5 in. 16 ply "H" rated Uniroyal tires
 - MORyde® rubber pin box
 - Dexto Axles w/ ABS and Tow Assist - includes Nev-R-Adjust® brakes and E-Z Lube® hubs
 - MORyde® LRE-4000™ rubberized suspension
 - Wet bolt fasteners, bronze bushings and 4,000 lb. coil springs

- INTERIOR**
- Solid hardwood slide fascia
 - Handcrafted hardwood glazed doors, stiles, drawers and trim
 - 5/8 in. tongue-and-groove joined plywood floor and 3/8 in. roof decking
 - Vinyl flooring (made in the USA) throughout including slide rooms
 - Ceiling fan (select models)
 - LED interior lighting throughout
 - LED accent lighting above slideouts
 - Tri-fold hide-a-bed sofa with sleep surface (select models)
 - 12V charging station
 - JayVoice voice command system - controls lighting, A/C and furnace
 - "Shoe garage" in hallway step (select models)
 - Flip-up tabletop storage next to tri-fold sofa (select models)
 - Soft close, heavy-duty, 75 lb. full extension, steel ball-bearing drawer guides
 - Toe kick nightlights in bedroom, bathroom and kitchen
 - Pull-out spice rack above microwave (select models)
 - Farmhouse stainless steel kitchen sink
 - Residential-grade, pull-out kitchen faucet
 - Extra 120V power outlets in kitchen and slide rooms
 - Flip-up countertop extension with 24 in. x 24 in. butcher block bar top (select models)
 - Flip-up utility drawer under kitchen sink
 - Residential quilted bedspread and pillows
 - Cedar-lined front wardrobe closet
 - Gas-strutted under-bed storage
 - Carbon monoxide and LP detector
 - Flip-up hidden storage in bedroom chest of drawers (select models)
 - Built-in laundry hamper in wardrobe (select models)
 - Bedroom nightstands (N/A 36SSWS)
 - Bathroom skylight
 - LED backlit custom framed mirror and medicine cabinet
 - Vessel bowl sink with high rise faucet in main bath
 - Porcelain toilet with foot flush
- LUXURY PACKAGE (Mandatory)**
- 6-point hydraulic auto-leveling system
 - MORyde® StepAbove™ entrance steps (main entrance) with strut assist
 - 2nd electric patio awning with integrated LED lights
 - Powered 50-amp cord reel
 - JAYCOMMAND® "Smart RV" system
 - Cellular prep for 4G WiFi antenna and JAYCOMMAND®
 - High gloss gelcoated sidewalls
 - Oversized multi-battery compartment (industry leading room for 4-6 batteries)
 - 32" 4K outside Smart LED TV
 - Solid hardwood cabinet stiles
 - Central vacuum system with dust port
 - Day/night roller shades in living room
 - Frameless dark tinted safety-glass windows
 - Free-standing (no pedestal) toilet with heel. (2)
 - Free-standing and (2) folding chairs
 - LED lireplace with electric space heater
 - Fresh Water Drinking System (patent-pending) for fresh drinking water at the kitchen sink and water/cr cr dispensers in the residential refrigerator
 - GE 21 cu. ft. residential refrigerator with 1800W inverter
 - GE Profile Series 30 in. residential convection microwave with built in air fryer
 - GE Profile Series residential 24 in. range (3.7 cu. ft. with 9100 BTU high output burner)
 - Residential solid-surface kitchen countertop with solid-surface sink covers
 - 32 in. 4K Smart LED bedroom TV
 - Residential walk-in shower with shampoo/soap holder, teak seat and shower tower
 - Washer/dryer prep
 - Under-sink dishwasher

Optional Equipment

OPTIONAL EQUIPMENT INSTALLED ON THIS VEHICLE BY MANUFACTURER

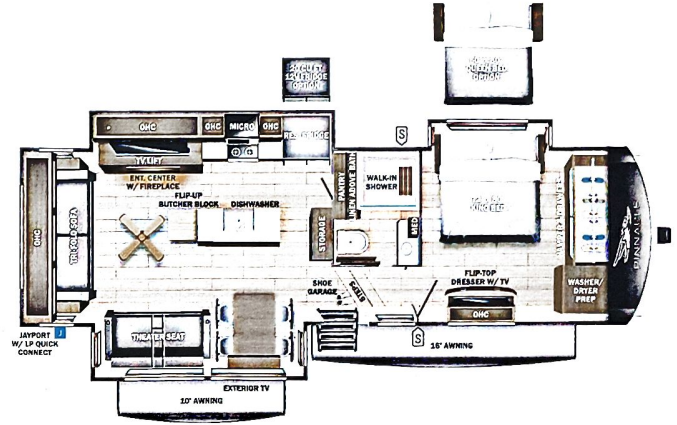
- Base price 122,568.00
- VINTAGE FARMHOUSE GRAPHICS PACKAGE n/c
- USA STANDARDS CUSTOMER VALUE PACKAGE 4,500.00
- PINNACLE LUXURY PACKAGE 12,450.00
- FIVE STAR HANDLING PACKAGE 5,993.00
- OVERLANDER II SOLAR PACKAGE 1,943.00
- ROOF VENT n/c
- 21 CU. FT. RESIDENTIAL REFRIGERATOR WITH INVERTER 743.00
- GENERATOR LP PREP TRUMA ON DEMAND WATER HEATER 1,575.00
- PRE-WIRED SANICON DUMP SYSTEM n/c
- BACKUP, SIDE AND ENTRY DOOR OBSERVATION CAMERA PREP n/c
- TINTED SAFETY GLASS WINDOWS n/c
- ROOF LADDER (STD) n/c
- ELECTRONIC DRUM BRAKES n/c
- AUTOMOTIVE STYLE FIBERGLASS REAR CAP n/c
- KING BED n/c

UNIT TOTAL 149,772.00

DEALER INSTALLED OPTIONS

Manufacturer's Suggested Retail Price \$149,772.00

TOTAL AMOUNT DOES NOT INCLUDE STATE AND LOCAL TAXES OR LICENSE FEES. THE PRICE SHOWN ABOVE MAY OR MAY NOT BE REPRESENTATIVE OF THE ACTUAL SELLING PRICE OF SIMILAR RECREATIONAL VEHICLES IN YOUR AREA.



UVW
13646 lbs



Sleeps



Length
36' 3.5"

DIMENSIONS

Exterior height: 159.50"
Exterior width: 102.00"

WEIGHTS

GVWR: 16275
GAWR (front): 7000
GAWR (rear): 7000

Approx. Gross Cargo Carrying Capacity (GCC): 2629

TIRES

Tire size (front): 215/75R17.5H
Tire size (mid):
Tire size (rear): 215/75R17.5H
Tire size (spare): 215/75R17.5H

CAPACITIES

Fresh water tank (gals.): 75.00
Gray water tank (gals.): 87.00
Black water/toilet tank (gals.): 50.00
Propane (lbs.): 120
Propane (gals.): 28
Water heater (gals.): 0.35

SEATING & SLEEPING

Some dimensions may be rounded and may vary from the actual dimensions
Weights may be estimated calculations and may vary from the actual weight - refer to the vehicle weight labels for actual weights
Floorplans, features and specifications are subject to change without notice.

