



#76069

Jay Feather Micro



Serial #: 1UJBB0AH1R1JG0169
Model: 166FBS JAY FEATHER MICRO TT

Model Year: 2024 Dealer Name: BISH'S RV OF LONGVIEW
5009 JUDSON RD
LONGVIEW, TX 75605
USA

Standard Equipment

THE FOLLOWING ITEMS ARE STANDARD ON THIS MODEL AT NO EXTRA CHARGE

- EXTERIOR**
- Aerodynamic, rounded front profile with aluminum framing
 - Modern graphics package with dual-colored sidewall
 - Stronghold VBL™ walls with double-sided Azdel composite (sidewalls, rear walls and slide out boxes)
 - Keyed-Alike™ lock system
 - Magnum Truss™ Roof System with limited lifetime warranty
 - American-made Norco Z-frame with integrated A-frame
 - Dark-tinted safety-glass windows
 - Marine grade exterior speakers with blue LED accent lighting
 - 30-amp service
 - LCI Solid Step® fold-down aluminum tread entry steps
 - Battery quick-disconnect
 - 1.5 in. fresh water drain valve
 - 2 in. Stronghold VBL™ floor with 2 lb. density foam
 - Automotive-style aluminum rims
 - Black tank flush
 - Exterior TV bracket with 120V and cable hook-ups
 - Mounted camera bracket for pre-wired side and rear back-up prep
 - Outdoor camp kitchen with galvanized steel bases (select models)
 - Reinforced step-up steel wheel wells
 - Swing-out entry door assist handle
- JAY PRO PACKAGE (Mandatory)**
- 16 in. American-made Goodyear® off-road tires with self-adjusting electric brakes
 - Rubber torsion axle
 - Climate Shield (zero to 100 degree tested weather insulation package)
 - Overlander 1 Solar Package: (1) 200W solar panel and 30-amp digital controller
 - Inverter pre-wire (main bedroom nightstand outlets or power tower and exterior outlet for models with an outside fridge)
 - Dual-hinge 10 cu. ft. 12V fridge
 - 32 in. 12V LED TV with built-in soundbar and AM/FM/Bluetooth®
 - Rear-mounted roof ladder

- INTERIOR**
- LED lighting throughout
 - Handcrafted, hardwood door/drawer fronts
 - Screwed and glued cabinet stiles
 - Plywood dinette, bed, bunk and shower/tub bases
 - 75 lb. full extension drawer guides
 - Residential-style kitchen countertops
 - Decorative backsplash
 - 4 in. high-density dinette cushions with vinyl backing (select models)
 - 4 in. Teddy Bear soft-touch bunk mats (select models)
 - USB charging ports (multiple locations throughout)
 - Bathroom skylight
 - Decorative roller shades with reflective backer
 - Foldable and portable dinette table with solid steel base (select models)
 - Hidden-hinged cabinet doors
 - High output auto-ignition LP gas furnace
 - Residential vinyl flooring throughout
- CUSTOMER VALUE PACKAGE (Mandatory)**
- 20 lb. LP gas bottles with auto-regulator and ABS cover
 - Spare tire
 - Detachable power cord
 - Black tank flush
 - Outside shower (select models without outside camp kitchen)
 - Power tongue jack
 - Rock Solid stabilizer system
 - On-demand water heater
 - 55 gal. fresh water tank
 - Side and rear back-up camera prep
 - Outside grille for JayPort system
 - MAXXAIR® power roof vent
 - 13,500 BTU roof-mounted A/C
 - Bathroom skylight
 - Max-length power awning with LED light

Optional Equipment

OPTIONAL EQUIPMENT INSTALLED ON THIS VEHICLE BY MANUFACTURER

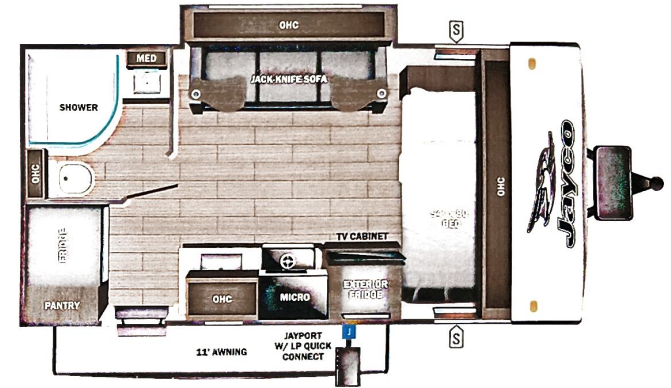
Base price	37,343.00
USA STANDARDS	n/c
CUSTOMER VALUE PACKAGE	5,250.00
JAY PRO PACKAGE	3,000.00
OVERLANDER 1 SOLAR PACKAGE	n/c
JAYCOMMAND CONTROL SYSTEM W/TPMS	593.00
15,000 BTU AC	300.00
MICROWAVE	n/c
3-BURNER GAS COOKTOP	n/c
20# LP GAS BOTTLES	n/c
ACCESSORY ROOF RACK	293.00

UNIT TOTAL 46,779.00

DEALER INSTALLED OPTIONS

Manufacturer's Suggested Retail Price \$46,779.00

TOTAL AMOUNT DOES NOT INCLUDE STATE AND LOCAL TAXES OR LICENSE FEES. THE PRICE SHOWN ABOVE MAY OR MAY NOT BE REPRESENTATIVE OF THE ACTUAL SELLING PRICE OF SIMILAR RECREATIONAL VEHICLES IN YOUR AREA.



UVW
4007 lbs



Sleeps



Length
19' 7.5"

DIMENSIONS

Exterior height:.....125.88"
Exterior width:.....100.50"

WEIGHTS

GVWR:.....4995
GAWR (front):.....4870
GAWR (rear):.....0
Approx. Gross Cargo Carrying Capacity (GCCC):.....988

CAPACITIES

Fresh water tank (gals.):...55.00
Gray water tank (gals.):...30.50
Black water/toilet tank (gals.):...30.50
Propane (lbs.):...40
Propane (gals.):...9
Water heater (gals.):...0.25

SEATING & SLEEPING

TIRES

Tire size (front):.....LT225/75R16E
Tire size (mid):.....
Tire size (rear):.....
Tire size (spare):.....LT225/75R16E

Some dimensions may be rounded and may vary from the actual dimensions
Weights may be estimated calculations and may vary from the actual weight - refer to the vehicle weight labels for actual weights
Floorplans, features and specifications are subject to change without notice.

2+3
YEAR | YEAR
LIMITED STRUCTURAL
WARRANTY