

Stock # 700427

## Jay Feather



Serial #: 1UJBB0BP6R1JS0101  
Model: 24BH JAY FEATHER TT

Model Year: 2024 Dealer Name: BISH'S RV OF LONGVIEW  
5009 JUDSON RD  
LONGVIEW, TX 75605  
USA

### Standard Equipment

THE FOLLOWING ITEMS ARE STANDARD ON THIS MODEL  
AT NO EXTRA CHARGE

- EXTERIOR**
- Aerodynamic, rounded front profile with aluminum framing
  - Stronghold VBL™ walls with double-sided Azdel composite (side walls, rear walls and slide out boxes)
  - 2 in. Stronghold VBL™ floor with 2 lb. density foam
  - Keyed-Alike™ lock system
  - Magnum Truss™ Roof System with limited lifetime warranty
  - American-made Norco Z-frame with integrated A-frame
  - Dark-tinted safety-glass windows
  - Marine grade exterior speakers with blue LED accent lighting
  - Galvanized steel and impact-resistant wheel wells
  - 30-amp service
  - Bumper-mount bracket for 17 in. middle
  - Outdoor camp kitchen with galvanized steel bases (select models)
  - Battery quick disconnect
  - Exterior TV bracket with 120V and cable hook-ups
  - 1.5 in. fresh water drain valve
  - Automotive-style aluminum rims
  - Factory installed rear roof ladder
  - Front molded decorative cap (select models)
  - Mounted camera bracket for pre-wired side and rear back-up prep
  - Swing-out entry door assist handle
- JAY SPORT PACKAGE (Mandatory)**
- LCI Solid Step fold-down aluminum tread steps on main entry door
  - Modern graphics package with dual-colored sidewall
  - Overlander 1 Solar Package: (1) 200W solar panel and 30-amp digital controller
  - Climate Shield (zero to 100 degree tested weather insulation package)
  - 32 in. or 39 in. LED Smart TV
  - Drying rack/sink cover
  - MAXXAIR® power roof vent (main living area)
  - Dual-hinge 10 cu. ft. 12V fridge

- INTERIOR**
- LED lighting throughout
  - Handcrafted, hardwood door/drawer fronts
  - Screwed and glued cabinet slits
  - Residential vinyl flooring throughout
  - Plywood dinette, bed, bunk and shower/tub bases
  - 75 lb. full extension drawer guides
  - Decorative backsplash
  - 4 in. high-density dinette cushions with vinyl backing
  - 4 in. Teddy Bear soft-touch bunk mats (select models)
  - USB charging ports (multiple locations throughout)
  - Bathroom skylight
  - Decorative roller shades with reflective backer
  - 60 x 80 in. residential queen beds (60 x 76 in. in Murphy bed models)
  - Directional and closeable A/C vents
  - Foldable and portable dinette table with solid steel base (select models)
  - Gas-strutted under bed storage (most models)
  - Hidden-hinged cabinet doors
  - High output auto-ignition LP gas furnace
  - Powered roof vents in bathroom and main bedroom (most models)
- CUSTOMER VALUE PACKAGE (Mandatory)**
- American-made nitro-filled Goodyear® radial tires with self-adjusting electric brakes
  - Automotive-style aluminum rims
  - 20 lb. LP gas bottles with auto-regulator and ABS cover
  - 13,500 BTU roof-mounted A/C
  - Spare tire
  - Detachable power cord
  - Max-length power awning with LED light
  - Black tank flush
  - Outside shower
  - Power tongue jack
  - Rock Solid Stabilizer System
  - On-demand water heater
  - 55 gal. fresh water tank
  - AM/FM Bluetooth stereo with roof-mounted speakers
  - Side and rear back-up camera prep
  - Inverter pre-wire (2 bedroom nightstand outlets, main TV and outlet for outside kitchen fridge)

### Optional Equipment

OPTIONAL EQUIPMENT INSTALLED ON THIS VEHICLE  
BY MANUFACTURER

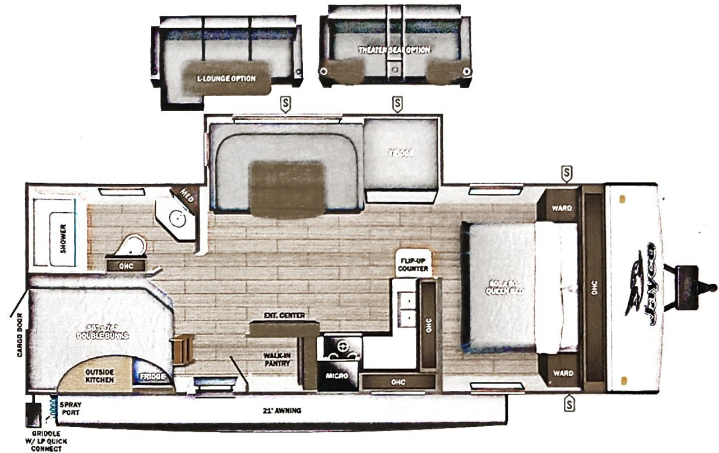
Base price	46,830.00
USA STANDARDS	n/c
CUSTOMER VALUE PACKAGE	5,250.00
JAY SPORT PACKAGE	3,000.00
NO BAJA EDITION	n/c
OVERLANDER I SOLAR PACKAGE	n/c
JAYCOMMAND CONTROL SYSTEM W/TPMS	593.00
15,000 BTU AC	300.00
NO 2ND AC	n/c
30 AMP SERVICE	n/c
NO FIREPLACE	n/c
20# LP GAS BOTTLES	n/c
ROOF LADDER (STD)	n/c
FRONT CAP	n/c
U-DINETTE	n/c

UNIT TOTAL 55,973.00

DEALER INSTALLED OPTIONS

## Manufacturer's Suggested Retail Price \$55,973.00

TOTAL AMOUNT DOES NOT INCLUDE STATE AND LOCAL TAXES OR LICENSE FEES. THE PRICE SHOWN ABOVE MAY OR MAY NOT BE REPRESENTATIVE OF THE ACTUAL SELLING PRICE OF SIMILAR RECREATIONAL VEHICLES IN YOUR AREA.



**UVW**  
6012 lbs



**Sleeps**



**Length**  
30' 1.88"

#### DIMENSIONS

Exterior height:	128.50"
Exterior width:	96.00"
<b>WEIGHTS</b>	
GVWR:	7500
GAWR (front):	3500
GAWR (rear):	3500
Approx. Gross Cargo Carrying Capacity (GCCC):	1488

#### CAPACITIES

Fresh water tank (gals.):	55.00
Gray water tank (gals.):	61.00
Black water/toilet tank (gals.):	30.50
Propane (lbs.):	40
Propane (gals.):	9
Water heater (gals.):	0.25

#### SEATING & SLEEPING

#### TIRES

Tire size (front):	ST205/75R14D
Tire size (mid):	
Tire size (rear):	ST205/75R14D
Tire size (spare):	ST205/75R14D

\*\*\*Some dimensions may be rounded and may vary from the actual dimensions\*\*\*

\*\*\*Weights may be estimated calculations and may vary from the actual weight

- refer to the vehicle weight labels for actual weights\*\*\*

Floorplans, features and specifications are subject to change without notice.

