



72198

Jay Flight SLX

Serial #: 1UJBC0AJXR7ZE0071

Model: 183RBW JAY FLIGHT SLX TT

Model Year: 2024 Dealer Name: BISH'S RV OF BOZEMAN

8466 HUFFINE LN  
BOZEMAN, MT 59718  
USA



**Standard Equipment**

THE FOLLOWING ITEMS ARE STANDARD ON THIS MODEL AT NO EXTRA CHARGE

- EXTERIOR**
- Axles with electric, self-adjusting brakes and ABS
  - Electric door locks
  - Galvanized steel, impact resistant wheel wells
  - Magnium™ Roof System
  - Seamless one piece roof material
  - 30-amp service
  - 30-amp service
  - Exterior cable TV hookup
  - LP quick connect (outside grill prep)
  - LP quick connect (outside grill prep)
  - Nitrogen filled radial tires
- BAVA PACKAGE**
- Wide stance axle
  - Enclosed underbelly
  - Power entry step
  - Stabilizer system
  - Deluxe graphics package
  - Powder coated wheel fenders

**Optional Equipment**

OPTIONAL EQUIPMENT INSTALLED ON THIS VEHICLE BY MANUFACTURER

- Base price 27,210.00
- USA STANDARDS n/c
- CUSTOMER VALUE PACKAGE 5,250.00
- BAVA EDITION 1,943.00
- OVERLANDER SOLAR PACKAGE 593.00
- 13,500 BTU ROOF MOUNTED A/C 593.00
- FIBERGLASS SIDEWALL 1,199.00
- DINETTE n/c

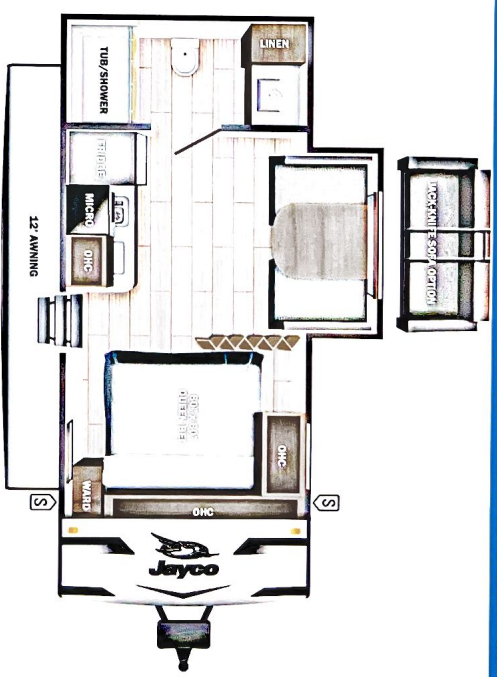
- INTERIOR**
- Solid hardwood cabinet doors with screwed slide construction throughout
  - Digital TV antenna
  - Residential-style kitchen countertops
  - High rise kitchen faucet
  - Heavy-duty, 75 lb., full-extension, steel ball-bearing drawer guides
  - Plywood bed platforms
  - Queen mattress (select models)
  - 30 lb. rated bunk beds (select models)
  - Shower curtain with curved shower track (select models)
  - Wood-trimmed mirror in bathroom
- CUSTOMER VALUE PACKAGE (Mandatory)**
- Solid Step® entry steps
  - On-demand tankless water heater
  - Power awning with LED lights
  - Power windows
  - Stabilizer jacks
  - Spare tire with cover
  - Keyed-Alike™ entry and baggage doors
  - Window shades
  - Wide view mirrors
  - Range hood
  - 8 cu. ft. 12V refrigerator
  - Microvent oven (N/A: 154BH)
  - Bathroom skylight
  - Tub/shower surround
  - AM/FM Bluetooth stereo
  - AM/FM Bluetooth stereo
  - Detachable power cord
  - Bathroom vent
  - Entry door with window and shade prep
  - LED interior and exterior lights
  - LED interior and exterior lights
  - One piece front fiberglass exterior wall

UNIT TOTAL 36,788.00

DEALER INSTALLED OPTIONS

**Manufacturer's Suggested Retail Price \$36,788.00**

TOTAL AMOUNT DOES NOT INCLUDE STATE AND LOCAL TAXES OR LICENSE FEES. THE PRICE SHOWN ABOVE MAY OR MAY NOT BE REPRESENTATIVE OF THE ACTUAL SELLING PRICE OF SIMILAR RECREATIONAL VEHICLES IN YOUR AREA.



**UVW** 3647 lbs **Sleeps** 2 **Length** 21' 1.38"

- DIMENSIONS**
- Exterior height: 124.50"
  - Exterior width: 85.00"
- WEIGHTS**
- GWR: 4350
  - GAWR (front): 4400
  - GAWR (rear): 0
  - Approx. Gross Cargo Carrying Capacity (GCCC): 703
- CAPACITIES**
- Fresh water tank (gals.): 30.00
  - Grey water tank (gals.): 19.90
  - Black water/toilet tank 19.90 (gals.)
  - Propane (lbs.): 10
  - Propane (gals.): 2
  - Water heater (gals.): 0.00
- SEATING & SLEEPING**

- TIRES**
- Tire size (front): LT225/75R16E
  - Tire size (mid):
  - Tire size (rear):
  - Tire size (spare): LT225/75R16E

\*\*\*Some dimensions may be rounded and may vary from the actual dimensions\*\*\*  
 \*\*\*Weights may be estimated calculations and may vary from the actual weight\*\*\*  
 - refer to the vehicle weight labels for actual weights\*\*\*  
 Floorplans, features and specifications are subject to change without notice.

