



#72133

Jay Flight SLX

Serial #: 1UUBCOAJ8P77B0414
Model: 184BS JAY FLIGHT SLX TT

Model Year: 2023 Dealer Name: BISH'S RV OF BOZEMAN
8466 HUFFINE LN
BOZEMAN, MT 59718
USA



Standard Equipment

Optional Equipment

THE FOLLOWING ITEMS ARE STANDARD ON THIS MODEL AT NO EXTRA CHARGE

OPTIONAL EQUIPMENT INSTALLED ON THIS VEHICLE BY MANUFACTURER

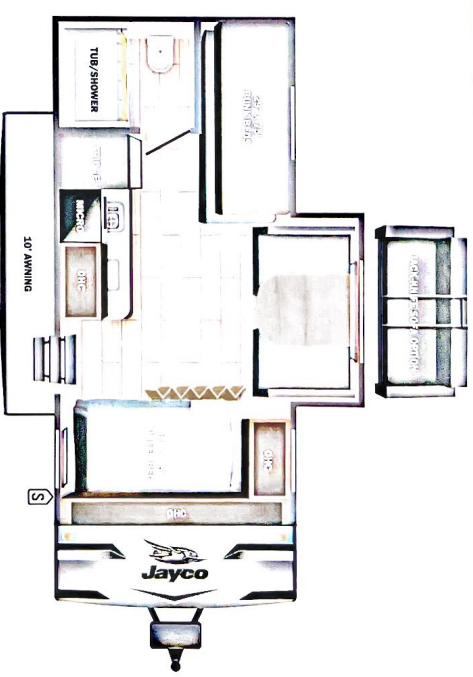
EXTERIOR	INTERIOR	Base price	MSRP
- Axes with electric, self-adjusting brakes and E-Z Lube® hubs	- Solid hardwood cabinet doors	USA Standards	3,300.00
- Fully-integrated A-frame	- LED interior lighting	Customer Value Package	N/C
- Magnum Truss™ Flood System	- Vinyl flooring throughout	No Baja Edition	N/C
- Seamless one piece roof material	- jacks and Bunnings® connectivity	8 Cu. Ft. 12V Refrigerator	899.00
- Large exterior downspouts	- Residential-style kitchen countertops	Fiberglass Sidewall	N/C
- 20 lb. propane bottle	- High top kitchen faucet	Dinette	N/C
- Exterior cable TV hookup	- Plywood bed platforms		
- LED exterior lighting	- Queen mattress (select models)		
- Motion hinge entry door with window	- Queen mattress (select models)		
- Floodlight solar prep	- 4 in. thick bunk mats (select models)		
- Backup & side marker camera prep	- Marine-grade toilet with foot flush		
- Detachable power cord	- Shower curtain with curved shower track (select models)		
- LT-Quick Connect (outside grill prep)	- Wood-trimmed mirror in bathroom		
STX EDITION (Indiana built units only)			
- 30 lb. LP bottle	CUSTOMER VALUE PACKAGE (MANDATORY)		
- Wide stance axle	- Goodyear® Endurance® tires (made in the USA)		
- Enclosed underbelly	- 13,500 BTU roof mounted A/C		
- Enclosed underbelly	- Tankless water heater		
- Stabilizer jacks (4)	- Water heater bypass		
- Aluminum mms	- Power awning with LED lights		
- Power tongue jack	- Marine grade exterior stereo speakers		
- Power graphics package	- Stabilizer jacks with sand pads (2)		
- Proven stainless exhaust headers	- Spare tire, new entry and baggage doors		
	- Large folding entry door grab handle		
BAJA PACKAGE (Optional - Rango Only)			
- 30 lb. LP bottle	- Range hood		
- 30 gal. water heater tank (30 gal.)	- 30 gal. water heater tank with cover		
- Flipped axle	- 8 cu. ft. 12V refrigerator		
- Goodyear® off-road tires	- Microwave oven		
- Enclosed underbelly	- Fitted bed sheet (N/A 154BH)		
- Enclosed underbelly	- Stabilizer jacks (4)		
- Stabilizer jacks (4)	- Tubetower surround		
- Deluxe graphics package			

UNIT TOTAL **31,454.00**

DEALER INSTALLED OPTIONS

Manufacturer's Suggested Retail Price \$31,454.00

TOTAL AMOUNT DOES NOT INCLUDE STATE AND LOCAL TAXES OR LICENSE FEES. THE PRICE SHOWN ABOVE MAY OR MAY NOT BE REPRESENTATIVE OF THE ACTUAL SELLING PRICE OF SIMILAR RECREATIONAL VEHICLES IN YOUR AREA.



U/VW **Sleeps** **Length**
3617 lbs 21' 7.38"

DIMENSIONS	CAPACITIES
Exterior height:.....126.00"	Fresh water tank (gals.):.....20.00
Exterior width:.....85.00"	Gray water tank (gals.):.....19.90
WEIGHTS	Black water/toilet tank
GVWR:.....4500	Propane (lbs.):.....19.90
GMW (front):.....3900	Propane (gals.):.....4
GMW (rear):.....0	Water heater (gals.):.....0.00
Approx. Gross Cargo Carrying Capacity(GCCC):.....883	SEATING & SLEEPING
TIRES	
Tire size (front):.....ST205/75R15D	
Tire size (mid):.....	
Tire size (rear):.....	
Tire size (spare):.....ST205/75R15D	

Some dimensions may be rounded and may vary from the actual dimensions
****Weights may be estimated calculations and may vary from the actual weight
- refer to the vehicle weight labels for actual weights***
Floorplans, features and specifications are subject to change without notice.

