



Jay Flight



Serial #: 1UJBC0BM0P7520099
 Model: 240RBSW JAY FLIGHT TT

Model Year: 2023 Dealer Name: Bish's RV - Kalispell, MT
 3100 US 93 S
 Kalispell, MT 59901
 USA

Standard Equipment

Optional Equipment

THE FOLLOWING ITEMS ARE STANDARD ON THIS MODEL AT NO EXTRA CHARGE

OPTIONAL EQUIPMENT INSTALLED ON THIS VEHICLE BY MANUFACTURER

- EXTERIOR**
- 20 lb. LP Bottles with Cover (2)
 - Enclosed underbelly
 - Axles with electric, self-adjusting brakes and easy-lube hubs
 - 1-Class™ cambered structural steel I-beams
 - Fully integrated A-frame
 - 5/8 in. tongue-and-groove plywood floor decking
 - Magnum Truss™ Roof system with plywood decking
 - Seamless one piece roof material
 - Large exterior downspouts
 - Galvanized steel, impact-resistant wheel wells
 - 30-amp service
 - Exterior TV mount and bracket
 - LED exterior lighting
 - Friction hinge entry door with shade-prep window
 - Q20 dark tinted safety-glass privacy windows
 - LP quick connect (outside gas grill prep)
 - Detachable power cord
 - Backup & side marker camera prep

- CUSTOMER VALUE PACKAGE (mandatory)**
- Goodyear® Endurance® tires (made in the USA)
 - Tankless water heater
 - Water heater bypass
 - Front diamond plate
 - Thermal Package Insulation (insulated & enclosed underbelly, foil insulation in roof)
 - Keyed-Alike™ entry and baggage doors
 - Outside shower
 - Power awning with LED lights
 - Marine-grade exterior speakers
 - Black tank flush
 - Spare tire with cover
 - Rock Solid Stabilizer System
 - Rooftop solar prep
 - Large folding entry door grab handle
 - Power tongue jack
 - Window shades
 - Range hood
 - 3-burner range with glass cover
 - Oven with glass door and interior light
 - Microwave oven
 - Fitted bed sheet
 - Bathroom skylight
 - 2nd fresh water tank—80 gal. total capacity
 - 10 cu. ft. 12V refrigerator
 - Pull-out kitchen faucet with sprayer
 - Sink cover and one rolling drying rack
 - Kitchen backsplash
 - Bathroom medicine cabinet
 - Solid Step® entry steps

- INTERIOR**
- 81 in. ceiling height
 - Shower/tub surround
 - Solid hardwood cabinet doors
 - LED interior lighting
 - J-Steel™ jackknife sofa with amrest & cup holders (most models)
 - Vinyl flooring throughout (including slide floors)
 - Window shades
 - Smoked-glass cabinet door inserts (select models)
 - Residential-style kitchen countertops
 - 3-burner range with glass cover
 - Oven with glass door and interior light
 - Heavy-duty, 75 lb., full-extension, steel ball-bearing drawer guides
 - Range hood
 - USB charging station
 - Queen mattress
 - Plywood bed platforms
 - Main bed struts
 - 300 lb. rated bunk beds (select models)
 - 600 lb. rated bunk beds (double bunks)
 - Privacy curtains in bunk areas (select models)
 - Vented bunk windows (select models)
 - 4 in. thick bunk mats (select models)
 - Wooden bedroom doors (select models)
 - Shower curtain with curved shower track (select models)

- BAJA EDITION**
- (2) 30# LP Bottles
 - Flipped Axle
 - 16" Goodyear® Off-Road Tires
 - Triple Steps

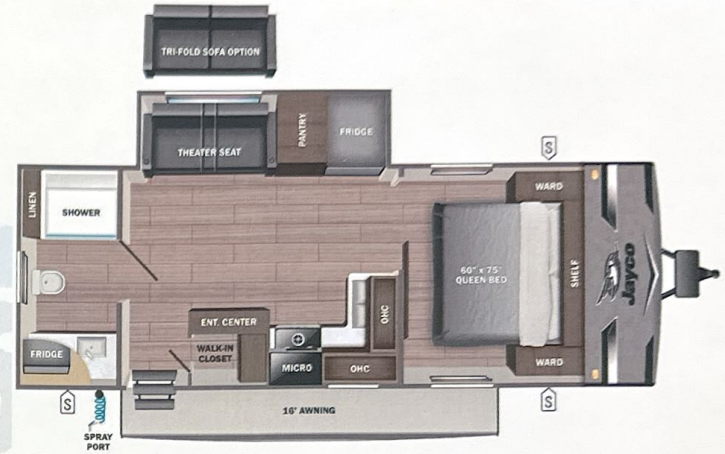
Base price	41,018.00
Classic Cottage	n/c
USA Standards	n/c
Customer Value Package	3,300.00
Baja Edition	1,943.00
Overlander Solar Package	593.00
13,500 BTU AC	n/c
10 Cu. Ft. 12V Refrigerator	n/c
Metal Sidewall	n/c
Total Foil	563.00
Roof Ladder (Std)	n/c
Theater Seating Sofa	n/c

UNIT TOTAL **47,417.00**

DEALER INSTALLED OPTIONS

Manufacturer's Suggested Retail Price \$47,417.00

TOTAL AMOUNT DOES NOT INCLUDE STATE AND LOCAL TAXES OR LICENSE FEES. THE PRICE SHOWN ABOVE MAY OR MAY NOT BE REPRESENTATIVE OF THE ACTUAL SELLING PRICE OF SIMILAR RECREATIONAL VEHICLES IN YOUR AREA.



UVW
5967 lbs

Sleeps

Length
27' 3.75"

DIMENSIONS

Exterior height:.....131.50"
 Exterior width:.....96.00"

WEIGHTS

GVWR:.....7250
 GAWR (front):.....3500
 GAWR (rear):.....3500
 Approx. Gross Cargo Carrying Capacity (GCCC):.....1283

TIRES

Tire size (front):.....LT225/75R16E
 Tire size (mid):.....
 Tire size (rear):.....LT225/75R16E
 Tire size (spare):.....LT225/75R16E

CAPACITIES

Fresh water tank (gals.):...76.00
 Gray water tank (gals.):...78.00
 Black water/toilet tank (gals.):...39.00
 Propane (lbs.):...60
 Propane (gals.):...14
 Water heater (gals.):...0.00

SEATING & SLEEPING



Some dimensions may be rounded and may vary from the actual dimensions

***Weights may be estimated calculations and may vary from the actual weight

- refer to the vehicle weight labels for actual weights***

Floorplans, features and specifications are subject to change without notice.